

DREF operation



International Federation
of Red Cross and Red Crescent Societies

Ghana: Floods

DREF operation n° MDRGH003
GLIDE n° FL-2010-000118-GHA
06 October, 2010

The International Federation of Red Cross and Red Crescent (IFRC) Disaster Relief Emergency Fund (DREF) is a source of un-earmarked money created by the Federation in 1985 to ensure that immediate financial support is available for Red Cross and Red Crescent emergency response. The DREF is a vital part of the International Federation's disaster response system and increases the ability of National Societies to respond to disasters.

CHF 122,297 (USD 124,389 or EUR 92,163) has been allocated from the IFRC's Disaster Relief Emergency Fund (DREF) to support the Ghana Red Cross Society (GRCS) in delivering immediate assistance to some 3,000 households. Unearmarked funds to repay DREF are encouraged.

Summary: The impact of the rainy season felt in the southern part of Ghana between June and August 2010 has moved to other regions with heavy flooding causing human and material damages. Regions most affected were Brong Ahafo, Eastern, Western and Northern Region. Ghana's National Disaster Management Organization (NADMO) has been collaborating with other humanitarian actors such as the Red Cross to provide relief assistance to the affected population and assisting them in relocating to temporary shelter centres provided by the authorities in the affected communities. The GRCS has mobilized its volunteers in the regions and they have been deployed to provide first-aid service and psychological counselling to the affected population. The volunteers also assisted in evacuation. In view of the recent situation in these regions, the GRCS will be scaling up its relief assistance activities with the distribution of non-food items like blankets, hygiene kits, water purification items, mosquito nets, farming tools, shelter kits including tarpaulins. The National Society (NS) also plans to increase its sanitation and hygiene promotion sensitization in the affected communities to prevent outbreak of epidemics and other preventable diseases. The planned intervention will be supported by the International Federation through its DREF and the deployment of an RDRT member whose presence is also expected to enhance the capacity of the NS in emergency relief activities especially the branches in the affected regions.

This operation is expected to be implemented over 3 months, and will therefore be completed by 31 December, 2010; a Final Report will be made available three months after the end of the operation (by 31 March, 2011).

[<click here for the DREF budget;](#)
[here for contact details;](#)
[here to view the map of the affected area>](#)

The situation

The impact of the floods caused by heavy rainfalls in Ghana continued to be felt as more regions are being affected. Floods have been reported in the Brong Ahafo, Eastern, Western and Northern Regions of Ghana with many communities affected while many families have been rendered homeless by the disaster.

As the rainfalls continue during the month of July 2010 with August-September being peak period, there is the likelihood of more communities being threatened by floods. Already reports from Western Region showed that 6,000 people were affected with two deaths in the district of Enchi, according to the Red Cross preliminary assessment. Other worst affected areas are Chereponi, Gusheigu, West Mamprusi, East

Mamprusi, East Gonja, and West Gonja Districts where more than 900 houses, 11 school buildings and about 832 acres of farm land have been destroyed with more than 500 people displaced. The situation in the north has become worrisome as flood has affected three regions and claimed 18 lives. About 2,097 houses have collapsed and so far 25 people were injured. Bridges and acres of farmlands had been destroyed and close to 9,674 households are displaced.

Ghana has two seasonal rainy seasons which last from June to August in the south and August to September in the north. Although the rainy patterns have much changed of late, the 3 northern regions have entered into their peak rainfall season and with the spill of excess waters from the Bagre Dam in neighboring Burkina Faso, there is likely to be extensive flooding in these regions in subsequent weeks.

Presently, about 123 communities have been affected especially in the West Gonja District. Some parts of the Northern Region are already submerged by floods due to the spillage of the dam. Some 2,097 houses have been destroyed leading to the displacement of more than 9,674 people. Additionally, 8,760 acres of farmlands are submerged and crops including livestock washed away. The torrential rains in the Northern Region coupled with the spillage of the Bagre Dam in Burkina Faso remain the major threats to the population as water level keep rising prior to the end of the rainy season.

Coordination and partnerships

Humanitarian actors including the GRCS have collaborating with National Disaster Management Organization (NADMO) to assist people affected by the floods. NADMO is also coordinating all operations with its stakeholders including the Ghana police force and military, different Ministries and other humanitarian agencies including the Ghana Red Cross Society. A joint assessment of the situation was carried out with NADMO taking the lead. The GRCS is represented in all coordination meetings in the affected regions. There is likelihood of continued partnership between GRCS and UNICEF in other areas outside the relief efforts. The International Organization for Migration (IOM) and FAO are also interested in partnering with the GRCS in livelihood interventions and other areas to be worked out soon.

Red Cross and Red Crescent action

The needs

The immediate needs of the victims are expressed in terms of relief (blankets, mosquito nets, sleeping mats, kitchen sets, buckets and jerry cans), water and sanitation (including soaps or detergents, cleaning materials, waste management and the like) and most pressing one in shelter as most displaced people would like to be accommodated in dignity.

Beneficiary selection: After a joint rapid assessment and visual inspection conducted in the affected regions, over 9,674 families are in need of relief assistance. The NS did a vulnerability analysis and selected 3,000 vulnerable families based on the following criteria:

- a) Victims who lost everything,
- b) those whose part of the houses collapsed and are still living in them,
- c) those living in temporary accommodation,
- d) pregnant women and lactating mothers.

The Government through NADMO and other agencies are assisting the other affected victims.

The proposed operation

The Red Cross will deliver immediate basic non-food items and carry out emergency health activities including psychological support to the victims for three months. GRCS will be responsible for needs assessment, registration of victims and beneficiaries, distribution of non-food items and sanitation equipment. As most families had their houses washed away, some will be accompanied in the reconstruction of temporary shelters in a safer and resilient manner. GRCS will also be doing post disaster health education in the communities against diseases such as cholera, typhoid, malaria, pneumonia and other communicable diseases.

Relief distributions (food and basic non-food items)

Outcome: 3,000 most affected households have received specific quantity and quality of non-food items based on the assessment and selection criteria from Red Cross.

Activities planned:

- Procure and distribute non-food items at target distribution points;
- Mobilize and train 120 volunteers on registration and distribution strategies of the Red Cross;
- Conduct a rapid emergency needs assessment in the target communities;
- Procure and distribute backyard gardening tools (hoes, cutlasses, boots, racks) and seeds to 500 target households;
- Control supply movements from point of dispatch to end user;
- Monitor and evaluate the relief activities and provide report on distribution of relief items;
- Develop an exit strategy.

Water, sanitation, and hygiene promotion

Outcome: Reduced risks of waterborne diseases through hygiene promotion, health education and provision of drinking water in target communities in the affected regions for 3 months.

Activities planned:

- Procure and distribute 150,000 water purification tablets and 3,000 pieces of water jerry cans to 3,000 most affected households in the target regions;
- Procure and distribute 3,000 bars of soap and 1,500 mosquito nets 3,000 most affected households in the target regions;
- Mobilize and train 90 Red Cross volunteers on good hygiene, water purification system and health promotion;
- Sensitize the target communities on water purification, good hygiene and health practices;
- Provide first-aid services in the affected areas.

Emergency shelter

Outcome: About 300 most vulnerable households in the affected communities are provided with emergency shelter during the three months.

Activities planned:

- Carry out damage need assessment in the affected communities;
- Develop beneficiary selection criteria and register beneficiaries;
- Procure and distribute tarpaulins and shelter kits to the target beneficiaries in the regions;
- Conduct technical briefing on emergency shelter to 30 selected Red Cross volunteers in the affected areas.

Communications – Advocacy and Public information

The proposed intervention of the GRCS with support from the International Federation will provide an opportunity for the National Society to demonstrate the added value of its activities to the public. The National Society with technical support from the West Coast Regional Representation of the International Federation will ensure adequate and effective national and international coverage of the Red Cross intervention. The International Federation will be assisting the GRCS in the formulation of strategies to address the public and the media during the operation, document the distribution process, propagate Red Cross Fundamental Principles through the production of relevant articles and photographs that will contribute to enhancing the visibility of the Red Cross in and outside the country as well as strengthening the capacity of the NS in information dissemination and sharing during emergency operation.

How we work

All IFRC assistance seeks to adhere to the [Code of Conduct for the International Red Cross and Red Crescent Movement and Non-Governmental Organizations \(NGO's\) in Disaster Relief](#) and the [Humanitarian Charter and Minimum Standards in Disaster Response \(Sphere\)](#) in delivering assistance to the most vulnerable.

The IFRC's vision is to inspire, encourage, facilitate and promote at all times all forms of humanitarian activities by National Societies, with a view to preventing and alleviating human suffering, and thereby contributing to the maintenance and promotion of human dignity and peace in the world.

The IFRC's work is guided by [Strategy 2020](#) which puts forward three strategic aims:

1. Save lives, protect livelihoods, and strengthen recovery from disaster and crises.
2. Enable healthy and safe living.
3. Promote social inclusion and a culture of non-violence and peace.

Contact information

For further information specifically related to this operation please contact:

- **In Ghana:** Kofi Addo, Secretary General, Ghana Red Cross Society; phone: +233 243071964; email: redcrossghana@yahoo.co.uk
- **In Nigeria:** Thierry Coppens, Regional Representative, West Coast Regional Representation, Abuja; phone: +234 (0).9.870.39.24; email: thierry.coppens@ifrc.org; Jerry Niati, Manager, Disaster Management, West Coast Regional Representation; phone: +234 7034142708; email: niati.jerry@ifrc.org
- **In South Africa:** Dr Asha Mohammed, Head of Operations, email: asha.mohammed@ifrc.org, phone: +27 11 303 9700, fax: + 27 11 884 3809; +27 11 884 0230
- **In Geneva:** Christine South, Operations Coordinator for West Africa, phone: +41.22.730.45.29, email: christine.south@ifrc.org

[<DREF budget and map below; click here to return to the title page>](#)

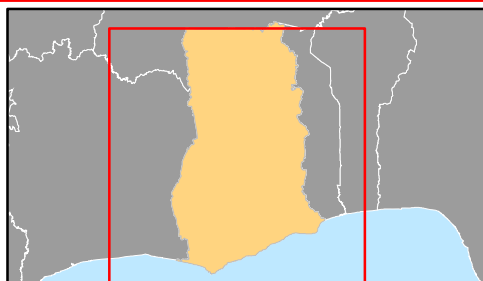
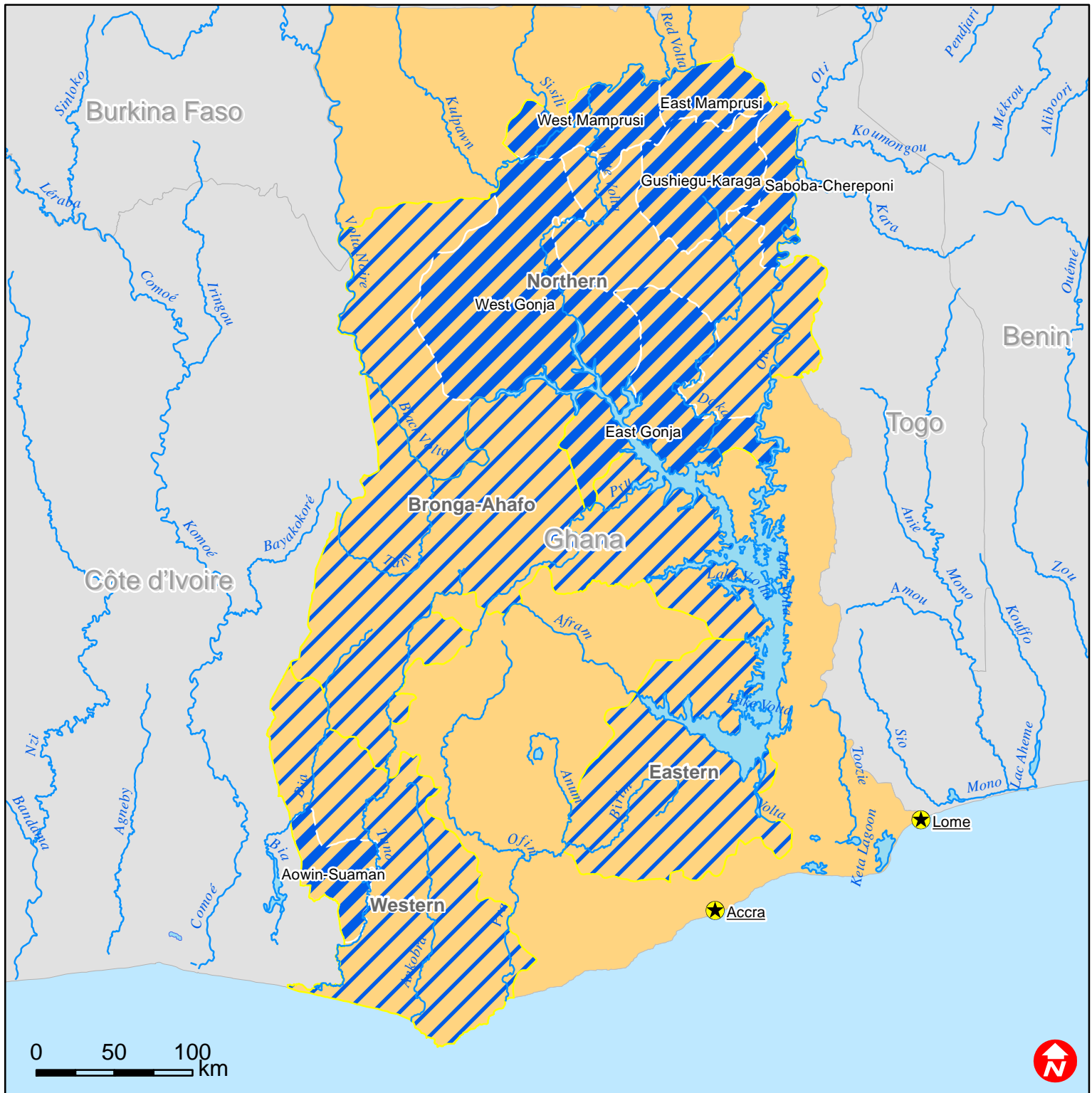
BUDGET SUMMARY

Budget Group	DREF Grant Budget	TOTAL BUDGET CHF
Shelter - Relief	27,720	27,720
Shelter - Transitional		0
Construction - Housing		0
Construction - Facilities / Infrastructure		0
Construction - Materials		0
Clothing & Textiles	29,799	29,799
Food		0
Seeds & Plants	9,240	9,240
Water & Sanitation		0
Medical & First Aid		0
Teaching Materials		0
Utensils & Tools	15,439	15,439
Other Supplies & Services & Cash Disbursements	3,465	3,465
Total Supplies	85,663	85,663
Land & Buildings		0
Vehicles		0
Computer & Telecom		0
Office/Household Furniture & Equipment		0
Medical Equipment		0
Other Machinery & Equipment		0
Total Land, vehicles & equipment	0	0
Storage		0
Distribution & Monitoring	3,850	3,850
Transport & Vehicle Costs	1,155	1,155
Total Transport & Storage	5,005	5,005
International Staff		0
Regionally Deployed Staff	6,101	6,101
National Staff		0
National Society Staff	10,903	10,903
Other Staff benefits		0
Consultants		0
Total Personnel	17,004	17,004
Workshops & Training	770	770
Total Workshops & Training	770	770
Travel	924	924
Information & Public Relation		0
Office Costs		0
Communications	1,617	1,617
Professional Fees		0
Financial Charges		0
Other General Expenses	3,850	3,850
Total General Expenditure	6,391	6,391
Cash Transfers to National Societies		0
Cash Transfers to 3rd parties		0
Total Contributions & Transfers	0	0
Program Support	7,464	7,464
Total Programme Support	7,464	7,464

Services & Recoveries		0
Shared Services		0
Total Services	0	0
TOTAL BUDGET	122,297	122,297



Ghana: Floods



- Affected regions
- Most affected districts