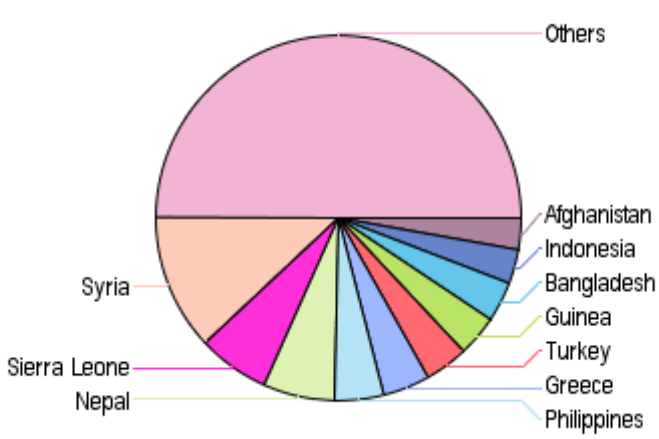
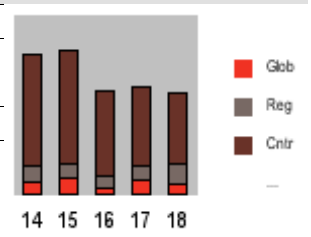


Main countries receiving international funding 2014 - 2018

Selected Parameters
 Year/ Period 2014/1-2018/9998 Project Region *
 Refreshed on 26-Jun-2019 at 10:01

Country	2014	2015	2016	2017	2018	Total	%
1 Syria	30.1	29.0	27.5	22.0	13.5	122.2	12%
2 Sierra Leone	39.9	18.7	0.7	5.7	-0.5	64.5	6%
3 Nepal	2.1	48.8	6.5	5.3	1.6	64.4	6%
4 Philippines	32.7	3.3	2.0	1.9	4.1	44.0	4%
5 Greece	0.0	7.6	22.2	10.0	2.5	42.3	4%
6 Turkey	11.0	4.4	11.1	1.7	10.8	39.1	4%
7 Guinea	11.3	22.6	2.9	0.0	0.1	37.0	4%
8 Bangladesh	4.2	2.2	3.7	16.7	9.4	36.1	4%
9 Indonesia	3.6	1.4	2.1	3.3	20.4	30.8	3%
10 Afghanistan	9.6	5.6	4.9	5.0	3.2	28.3	3%
11 Korea, North	5.2	4.5	7.6	4.2	4.3	25.8	3%
12 Liberia	14.6	5.1	4.3	0.3	0.3	24.7	2%
13 Myanmar	2.6	6.3	3.4	5.4	5.3	22.9	2%
14 Somalia	3.7	3.2	2.9	9.3	3.1	22.2	2%
15 Kenya	3.6	3.4	3.1	7.7	3.8	21.7	2%
16 Jordan	4.1	4.6	4.2	4.0	2.2	19.1	2%
17 Congo, Democratic R	0.5	0.7	2.1	1.2	11.9	16.5	2%
18 Sri Lanka	3.4	3.1	4.2	4.4	0.2	15.3	2%
19 Nigeria	1.9	0.8	1.5	3.4	7.6	15.2	1%
20 Iraq	6.4	2.5	2.8	0.6	1.3	13.6	1%
21 South Sudan	3.2	1.4	0.8	2.4	3.7	11.5	1%
22 Yemen	0.6	2.3	1.9	3.4	3.2	11.4	1%
23 Haiti	1.1	0.1	7.0	2.0	0.9	11.2	1%
24 Cameroon	2.3	1.9	2.5	2.2	1.3	10.3	1%
25 Sudan	4.1	2.6	2.2	0.7	0.5	10.1	1%
26 Lebanon	3.4	1.8	1.9	2.4	0.3	9.8	1%
27 Ecuador	0.1	0.2	8.0	0.6	0.1	9.1	1%
28 Cuba	0.1		0.2	7.4	1.0	8.6	1%
29 Italy		2.4	4.0	1.6	0.2	8.3	1%
30 Ukraine	1.3	2.9	0.9	1.5	1.2	7.9	1%
Other countries	42.5	57.2	40.5	36.0	36.5	212.7	21%
Total country programmes	249.3	250.7	189.9	172.5	154.1	1,016.5	
Regional programmes	34.3	33.3	25.4	34.7	47.1	174.7	
Global programmes	28.5	36.9	15.4	32.4	24.6	137.8	
Total income	312.1	320.8	230.7	239.6	225.8	1,329.0	
% country programmes	80%	78%	82%	72%	68%	76%	
% regional programmes	11%	10%	11%	14%	21%	13%	
% global programmes	9%	11%	7%	14%	11%	10%	

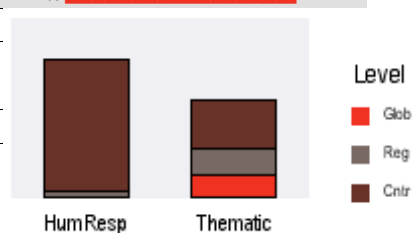


Main countries receiving international funding

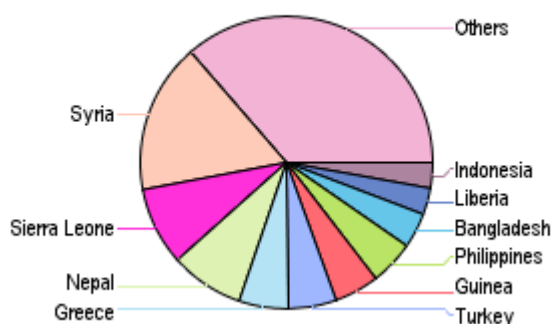
Selected Parameters
 Year/ Period 2014/1-2018/9998 Project Region *
 Refreshed on 26-Jun-2019 at 10:01

	Country	Humanitarian Response	Thematic	Total	%
1	Syria	122.2		122.2	12%
2	Sierra Leone	63.5	1	64.5	6%
3	Nepal	60	4.4	64.4	6%
4	Philippines	36.1	7.9	44.0	4%
5	Greece	40.1	2.1	42.3	4%
6	Turkey	39.1		39.1	4%
7	Guinea	36.4	0.6	37.0	4%
8	Bangladesh	28.5	7.6	36.1	4%
9	Indonesia	20.7	10	30.8	3%
10	Afghanistan	0.9	27.4	28.3	3%
11	Korea, North	6.4	19.5	25.8	3%
12	Liberia	21.7	3	24.7	2%
13	Myanmar	5.2	17.7	22.9	2%
14	Somalia	10.2	11.9	22.2	2%
15	Kenya	16.3	5.4	21.7	2%
16	Jordan	9.6	9.4	19.1	2%
17	Congo, Democratic R	14.9	1.5	16.5	2%
18	Sri Lanka	8.1	7.2	15.3	2%
19	Nigeria	12	3.2	15.2	1%
20	Iraq	11.2	2.4	13.6	1%
21	South Sudan	5.9	5.6	11.5	1%
22	Yemen	1.8	9.6	11.4	1%
23	Haiti	-2.5	13.7	11.2	1%
24	Cameroon	2.2	8.1	10.3	1%
25	Sudan	7.5	2.6	10.1	1%
26	Lebanon	4.7	5.1	9.8	1%
27	Ecuador	9	0.1	9.1	1%
28	Cuba	8.2	0.4	8.6	1%
29	Italy	7.2	1.1	8.3	1%
30	Ukraine	5.8	2.1	7.9	1%
	Other countries	123.1	89.7	212.7	21%

Total country programmes	736.2	280.3	1,016.5
Regional programmes	36.0	138.7	174.7
Global programmes	5.2	132.6	137.8
Total income	777.5	551.5	1,329.0
% country programmes	95%	51%	76%
% regional programmes	5%	25%	13%
% global programmes	1%	24%	10%



Humanitarian Response



Thematic

