

# Operations update



## Sri Lanka : Support for internally displaced people

Emergency appeal n° MDRLK002  
Operations update n° 10  
16 February 2012

**Period covered by this operations update:** 13 October 2011 to 12 January 2012

**Appeal target (current):** CHF 6.17 million  
<[click here](#) to view the interim financial report>

**Appeal coverage:** 98 per cent based on current revised appeal budget. <[click here](#) for the donors' response list or [here](#) for contact details>

**Appeal history:** This Emergency Appeal was initially launched on a preliminary basis on 12 April 2010 for CHF 3,604,299 (USD 3,382,480 or EUR 2,504, 250) for 24 months to assist 5,000 families.



The first training on Psychosocial Support Programming under Red Cross Post-Conflict Recovery Programme was conducted with the participation of 30 volunteers of Kilinochchi and Mulathivu branches in Vavuniya in December 2011. **Photo:** IFRC.

The revised emergency appeal was launched in July 2011 seeking CHF 6.17 million in cash, kind, or services to support the Sri Lanka Red Cross Society (SLRCS) to assist at least 7,000 families (35,000 people) for 36 months, and planned to complete by 12 April 2013. A Final Report will be made available by 12 July 2013 (three months after the end of the operation).

### In brief

#### Programme purpose:

- Restore and support SLRCS branch structure in northern and eastern regions of Sri Lanka, increase SLRCS's capacity in local community and civil society through the branches as well as Red Cross Red Crescent's capacity to address the most urgent situations of vulnerability.
- Support the returning population in shelter and livelihood to restore the living environment, in health and care, and water, sanitation and hygiene promotion to reduce the number of deaths, illnesses and impact

from diseases and public health emergencies, and in disaster management to reduce the number of deaths, injuries and impact from disasters by enhancing coping capacities.

- Coordinate the humanitarian assistance of the Red Cross Red Crescent Movement.

**Summary:**

This appeal is under the framework of the Red Cross Post Conflict Recovery Programme (RC PCRP) in Sri Lanka, which has been implemented by SLRCS since April 2010, having a partnership with the International Federation of Red Cross and Red Crescent Societies (IFRC) and other Movement partners. The programme aims to contribute to the sustainable rehabilitation and reconstruction in the north of Sri Lanka, which is an area of the country which remains in great need of development. It primarily supports people who have been displaced and resettling due to the conflict. The programme is an integrated movement intervention with overall coordination of IFRC, with the support of bilateral and multilateral partners. The entire programme follows the owner-driven approach and direct-beneficiary cash transfer mechanism, in order to empower beneficiaries and improve a sense of community ownership.

The shelter programme covers a total of 2,512 families at present; 1,153 under multilateral support in Kilinochchi (600) and Jaffna (553) districts, and 1,359 under bilateral support in Kilinochchi (300), Mulathivu (865) and Mannar (194) districts. Construction of new houses following the owner-driven approach is the key constituent of the programme, while other components like water and sanitation, community infrastructures, livelihoods, health care, disaster management and organizational development, complement the sustainability and the resilience of the community.

Kilinochchi and Mulathivu Red Cross branches were re-established - appointing the governance, deploying key staff - and are functional now. The evolvement of RC PCRP is able to attract youth and professionals in the area, to re-establish a strong Red Cross volunteer network. There are more than 300 volunteers in action at the moment. The Volunteers in Action (VIA) programme, an innovative approach was launched combining the software components of the programme aiming to harness volunteer action for the holistic development of the communities.

**No. of people we help:** IFRC supports 7,000 families (35,000 beneficiaries) in this programme.

**Our partners:** The RC PCRP is implemented by SLRCS with the support of multilateral partners including the United Arab Emirates Red Crescent, Monaco Red Cross, Korean Red Cross, Australian Red Cross (ARC), Canadian Red Cross (CRC) and Irish Red Cross (IRC), and German Red Cross (GRC), Japanese Red Cross Society (JRCS) and Norwegian Red Cross (NRC) as bilateral partners. IFRC and SLRCS are advocating to partners to have joint programmes with the partners such as International Committee of Red Cross (ICRC), GRC, CRC, NRC and JRCS in future for core programmes such as health and care, disaster management, livelihood and water and sanitation.

On behalf of the SLRCS, IFRC would like to thank all partners and contributors for their response to this appeal.

## The situation

With the end of the conflict, the government has been making tremendous efforts to bring the affected communities into normalcy through resettlement and various development endeavours. The conflict left hundreds of thousands of people in transit, displaced, and seeking refuge with host families or in government-run camps or centers for internally displaced people. All the districts of the Northern Province affected by the

conflict, the entire Kilinochchi and Mulathivu districts were fully deserted displacing all the inhabitants and there were partial displacements in Mannar, Vavuniya and Jaffna districts. Between 2006 and February 2009, over 281,000 people became internally displaced. This was in addition to over 214,000 people who had been displaced before 2006, meaning that over half a million people had been displaced by the conflict. As a result, the situation in the north of Sri Lanka was critical for the affected people at the end of the war, who lost almost everything including accessibility and availability of shelter, water and sanitation, health care, livelihood and other basic services and facilities. To date, those needs still remain unmet at a considerable level. In addition, the destruction of public infrastructure, absence of adequate medical services, livelihoods support and access to basic services are exacerbating the situation.

## **IDP statistics and resettlement progress**

The Joint Humanitarian and Early Recovery Update (JH-ERU)<sup>1</sup> (October 2011, report no 37) reveals that a total of 424,635 people (125,894 families) have been released from transitional camps and/or returned from host families by end October 2011. Furthermore, 7,618 internally displaced persons (IDPs) or 2,316 displaced families after April 2008 remained in camps awaiting return to their areas of origin. An additional 7,553 IDPs (2,049 families) from the protracted or long-term caseload (displaced prior to April 2008)<sup>2</sup> remained in welfare centres.

In order to facilitate IDP resettlement, issuing clearance tasks in the areas designated by the government for residence and livelihood remains a high priority. Across all districts, tasks now increasingly include land clearance for livelihood and infrastructure. Surveys and clearance activities continue in the Eastern Province. According to JH-ERU, by September 2011, approximately 1.737 km<sup>2</sup> of land was released through minefield clearance and battle area clearance (BAC), with a cumulative total of 545.267 km<sup>2</sup> of land cleared and released since 1 January 2009.

## **Need and the gap of assistance**

The government had identified two major areas under its recovery programme to address the needs of the returning population and the initial assessments had confirmed the needs are in line with two priorities:

- (1) Rehabilitation and restoration of all social, economic and community infrastructure facilities
- (2) Assistance to families in the process of livelihood restoration/development

With these findings and needs being identified, the government had set guidelines and planned their action programme under seven sections for the year 2011 for the recovery and rebuilding of the north. A summary of the gap and the achievements for each section are explained as follows.

### **1. Shelter**

The government and humanitarian actors' estimation of the total houses in need of reconstruction is around 170,000 in the north of Sri Lanka (as shown in table 1), excluding more than 100,000 families scheduled for return from India and other countries over the next couple of years.

---

<sup>1</sup> This report indicates the UN and NGO partner response to continuing humanitarian needs and early recovery concerns, in support to the Sri Lankan government's efforts to rebuild the former conflict-affected regions. Activities show progress towards the sectoral priorities and goals described in the 2011 joint plan for assistance.

<sup>2</sup> There are two major caseloads of displaced people in Sri Lanka. Those recently displaced or 'new' IDPs refer to those displaced after April 2008 and the 'old' or protracted caseload refers to those displaced prior to April 2008. Note that the total population returned to their districts of origin includes returns from both categories of IDPs.

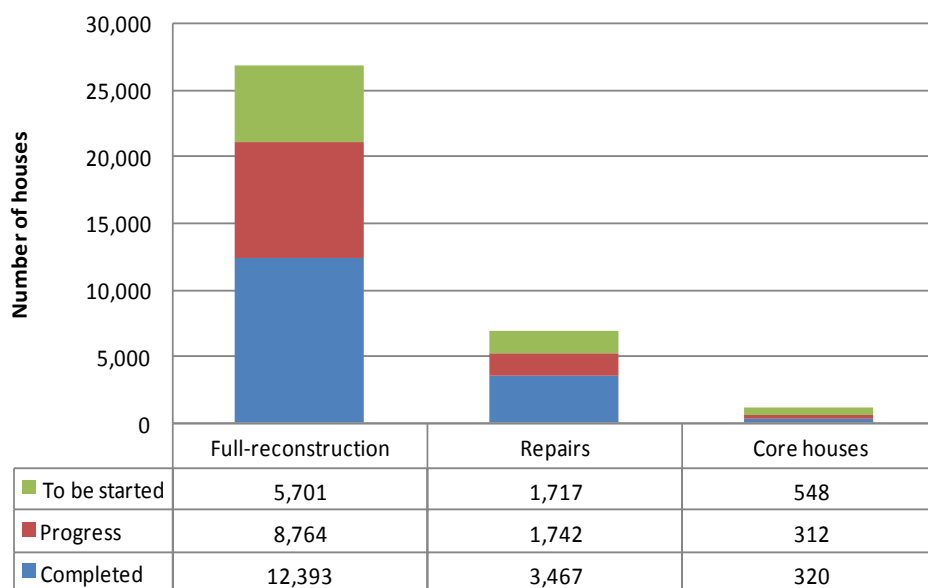
**Table 1: Situation of houses by damages in the Northern Province**

District	Fully Damaged <sup>3</sup>	Partially Damaged <sup>4</sup>	Total
Killinochchi	32,520	9,470	41,990
Mulathivu	22,746	5,089	27,835
Vavuniya	13,159	2,041	15,200
Mannar	23,438	1,633	20,751
Jaffna	37,286	23,556	60,842
<b>Total</b>	<b>129,149</b>	<b>41,789</b>	<b>170,938</b>

Source: UN Habitat (Data source: District Planning Secretariats and Respective agencies)

Of the 170,938 damaged houses, 75 per cent require new constructions and the rest are repairable. The coverage by donors on shelters is still very low - with committed funding for building or repairing sufficient only for 35,011 (20 per cent) houses in the Northern Province and the progress is as follows.

**Figure 1: Progress of the shelter assistance**

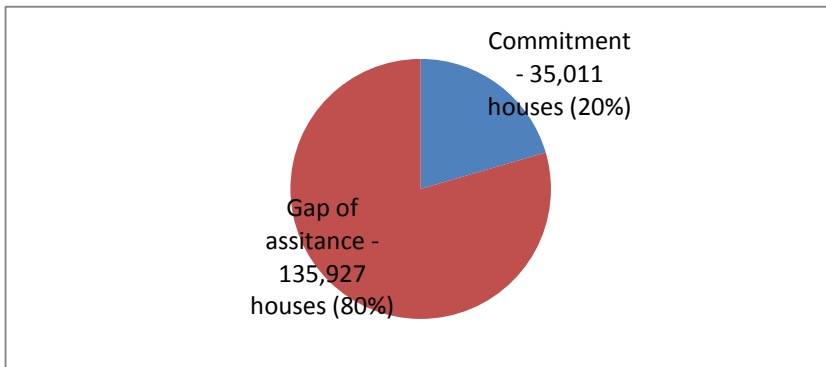


Source: JH-ERU, UNOCHA (October 2011, report no37)

<sup>3</sup> Repair cost is more than 40% of the replacement of the house

<sup>4</sup> Repair cost is less than 40% of the replacement of the house

**Figure 2: The gap of shelter assistance**



Source: JH-ERU, UNOCHA (October 2011, report no 37)

The Sri Lankan government continues to prioritize permanent housing needs in the Northern Province and only permanent houses are constructed under the housing programme in the year 2011.

## **2. Health and care**

Three decades of conflict have hampered institutional knowledge about basic health care in target communities. The Presidential Task Force (PTF) considers health and the nutritional condition of the resettling population as one of the most important activities in the recovery programme of the government. There is a felt gap in access to care, prevention and health promotion. Many people require reinforced interventions and support for basic health care.

## **3. Water, sanitation and hygiene promotion**

District and divisional plans in Sri Lanka's Northern Province indicate dozens of communities without current access to safe drinking water and basic sanitation. Humanitarian measures are necessary to prevent the possible deterioration of the health of the communities that could be triggered by poor water and sanitation conditions. The JH-ERU reveals that a total of 12,325 toilets and 9,397 wells have been cleaned, repaired or constructed in the north by the agencies as of 31 October 2011.

## **4. Food security, agriculture and livelihoods**

The Northern Province economy depends heavily on agriculture. Agencies have agreed to provide livelihood assistance package for returnees, worth a minimum of LKR 35,000 (CHF 304.28) per family in consistence with the standard livelihood package agreed upon by government authorities and the humanitarian agencies. This is mainly for agriculture (crop and livestock cultivation) and fisheries assistance, as well as other income-generation activities, such as carpentry, masonry, and small scale businesses. As direct food assistance phasing out, agencies are continuing with income generation and livelihood recovery interventions to target families to help them move towards greater stability and resilience.

## **5. Education and sports**

Agencies continue to support education officials, school authorities, students and communities in the northern districts to introduce a child-friendly approach in schools through the development of trainings, school-based

assessments and school development plans. Returnee families confront serious difficulties recovering their livelihoods, which inevitably affect their children's school attendance and learning as well. Apart from the general challenges of resettlement, children's wellbeing and performance in school are affected by psychosocial issues related to war trauma.

## 6. Service provision

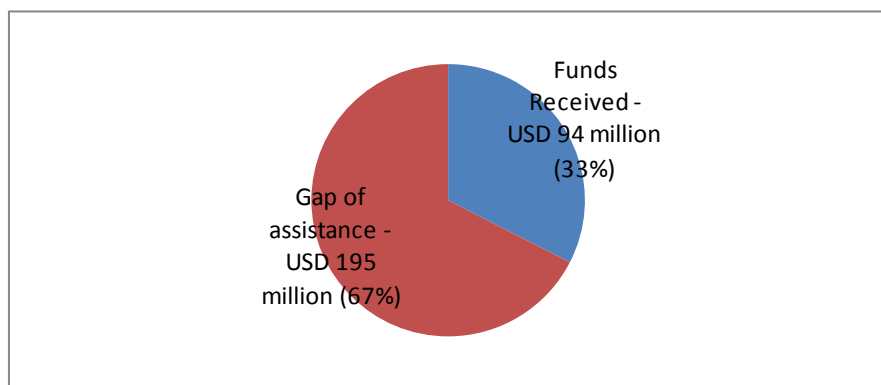
Agencies are supporting the returning people with the government in raising awareness on the importance of obtaining citizenship, birth, marriage and death certificates. Furthermore agencies are assisting in addressing issues of land ownership, recovering lost land documents, support with the administrative process to upgrade land tenure, defining boundaries between the disputed lands, and title changes for permit lands. An additional number of NGOs in the sector, working in partnership with relevant government and UN agencies, provided support for training and capacity building for authorities and communities, legal referrals, and support to vulnerable persons. These were implemented through sector-specific activities, or as mainstreamed components within activities under other sectors.

## 7. Mine action and economic development

In close cooperation with the government, mine action partners, mobilized resources amounting to Rs. 2.83 billion (US\$ 25.5 million), to carry out mine clearance and non-technical surveys, paving the way for the return of over 300,000 IDPs. In response to the surge in mine action activities since mid 2009, all operators significantly scaled up their clearance and survey capacities, and together with the Sri Lanka Army Humanitarian Demining Unit (HDU), contributed to the clearance of 444 km<sup>2</sup> of land since January 2009, in addition to the release of large stretches of land after surveys. It conducted the demining of identified resettlement areas, access roads, locations of infrastructure and the paddy lands.

With this situation all the actors involved in the humanitarian assistance face a huge funding gap to assist those people in need. The Joint Plan of Assistance (JPA) 2011 provides a framework for meeting immediate needs while linking interventions to the early- and medium-term recovery efforts, including the priorities of building shelters and homes, supporting agriculture, food security and livelihood recovery. As of 18 November 2011, the JPA remains underfunded with 33 per cent received against a total of US\$ 289 million. Coordination and planning of the JPA 2012 is underway with other global appeals.

**Figure 3: Current gap of funds for JPA**



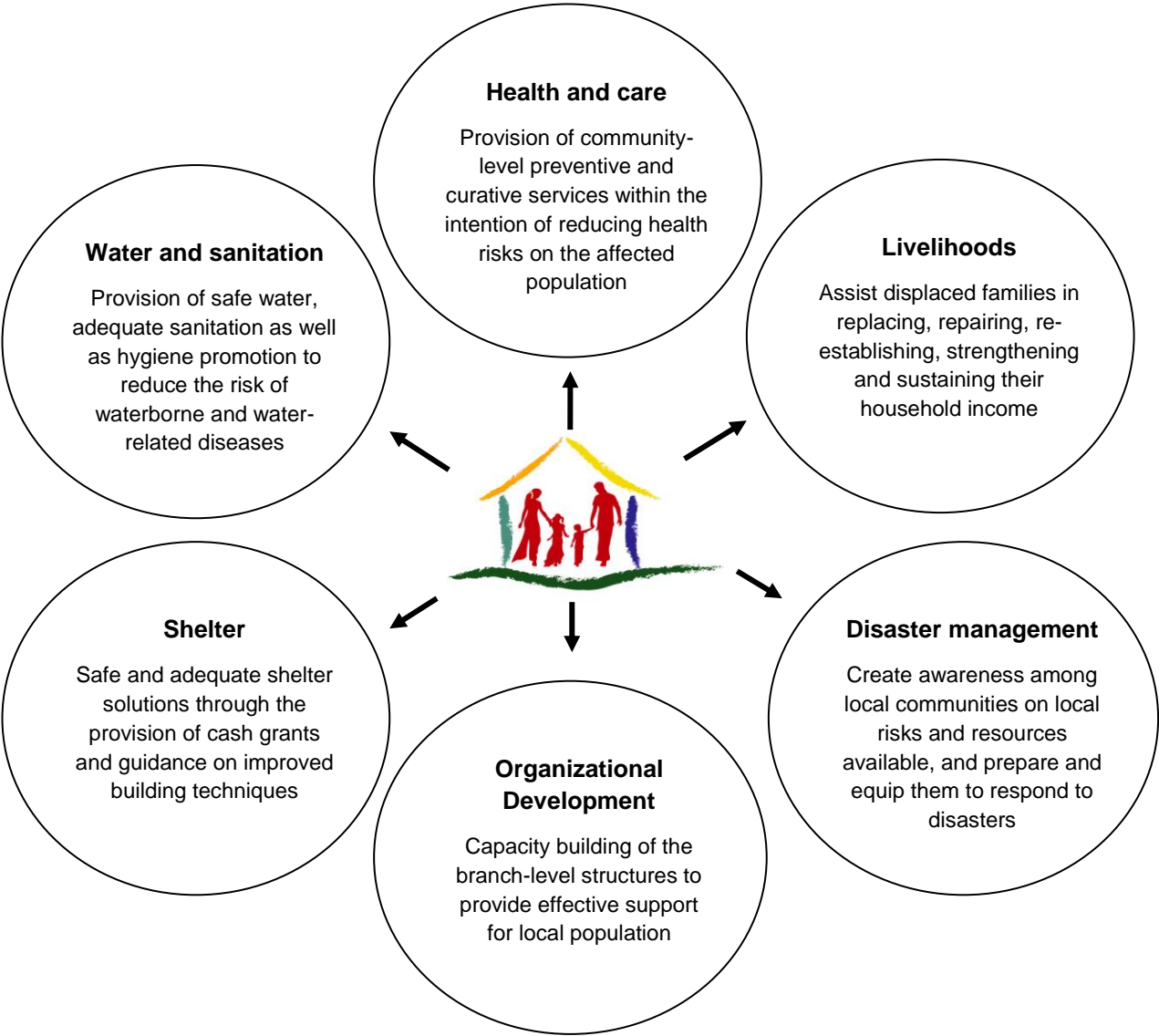
Source: JH-ERU, UNOCHA (October 2011, report no 37)

# Red Cross Post-Conflict Recovery Programme (RC PCRPP)

The RC PCRP is implemented as a joint Red Cross Red Crescent Movement programme by SLRCS with operation modalities agreed upon with the partners. It is an integrated programme to support resettling communities within a comprehensive package as shown in figure 4.

The VIA programme, an innovative approach was launched combining the software components of the programme to develop multi-skilled volunteers. This programme aims to harness volunteer action for the holistic development of the communities. Volunteer capacities are developed through trainings/workshops and creating platforms for integration and multi-cultural dialogue. Trained volunteers are expected to be the catalysts in the change process of the rebuilding of resilient communities.

**Figure 4: Program Components**



## Coordination and partnerships

The whole programme is implemented by SLRCS with the overall coordination of IFRC, as an integrated movement programme with the support of bilateral and multilateral partners. SLRCS is working closely with the bilateral partners; GRC, JRCS, and NRC. ICRC contributes to the programme by providing important training assistance in software component, such as disaster management, mine risk education and well cleaning. While the Indian government is keen to have a partnership with the RC PCRP and is exploring the possibilities of participating in the programme. The implementation and field monitoring of project is done by SLRCS, providing the technical support and social mobilization. The planning, designing and promoting of the programme is done by IFRC with the SLRCS, with a partial funding assistance for the programme. The monitoring mechanism (both physical and financial) and guidelines had been developed with agreement of all the partners.

An operational office for RC PCRP was established in Vavuniya in July 2010 and the IFRC, SLRCS and NRC are operating from this office at present. The SLRCS recruited project staff including the field staff deployed in project sites in Kilinochchi, Mulathivu, Mannar and Jaffna districts. The field staff is based in Kilinochchi and Mulathivu branches and two field offices in Wadamarachchi (Jaffna) and Poonagary (Kilinochchi). Field coordination meetings are being conducted weekly with the field staff in those field offices to discuss the progress and issues of the programme. Furthermore, two monthly progress review meetings are being conducted in the PCRP movement coordination office in Vavuniya; one VIA programme coordination meeting and the other PCRP coordination meeting with partners. This is being conducted for coordination, information sharing and monitoring of the programme. Additionally the programme informs the government and sector leaders periodically as required.

Existing Rural Development Societies (RDS) of the villages takes the leading role in community level in organizing the community meetings and activities to facilitate the RC PCRP staff for field level activities. The RDS are being engaged in the process from the beginning and in each and every step of the implementation until the end. They are the community representatives, with whom the needs, issues and concerns of the communities are discussed.

The RC PCRP is advocating for the most vulnerable in their rebuilding process. It provides complementary assistance to the government and other agencies' ongoing efforts and ensures strong communication and coordination with other stakeholders to minimize the risk of both duplication and gaps. The programme needed to expand further to extend its support to cater to the increasing needs of the resettling communities on their own lands where they were before the conflict (except the landless people as mentioned above).

## Progress towards planned outcomes

RC PCRP is growing remarkably in meeting the recovery needs of shelter, health and care, water and sanitation, disaster management and livelihood of the resettling population. The shelter assistance had been increased from 650 families to 1,153 families under multilateral support (emergency appeal funds) and the rest (1,359) is with bilateral funding to cater to the huge gap of unfulfilled shelter needs, going beyond the planned 1,000 families in the revised emergency appeal. This was due to the increased credibility, transparency and accountability of the programme, as well as the increased donor commitment. The number of targeted families had increased from 5,000 to 7,000 in health and care, water and sanitation, and hygiene promotion and disaster management objectives. The branch development component of the project is being done with Canadian Red Cross's support in Kilinochchi and German Red Cross in Mulathivu.

## Shelter

### Outcomes

**Outcome: 1,000 affected families (5,000 beneficiaries) in north-eastern districts have safe and adequate shelter and settlement solutions through the provision of cash grants and guidance on improved building techniques.**

Outputs	Activities
1,000 constructed permanent houses by engaging beneficiaries in the construction process	<ul style="list-style-type: none"> <li>• Selection of sites and beneficiaries.</li> <li>• Strengthening of community-based organizations to involve in addressing community issues and resolving constraints.</li> <li>• Setting up contract mechanisms and installation systems.</li> <li>• Initiate 1,000 house constructions.</li> <li>• Execution of community contracts for the construction of community infrastructure.</li> <li>• Monitor and technical verification of progress.</li> </ul>

### Achievements

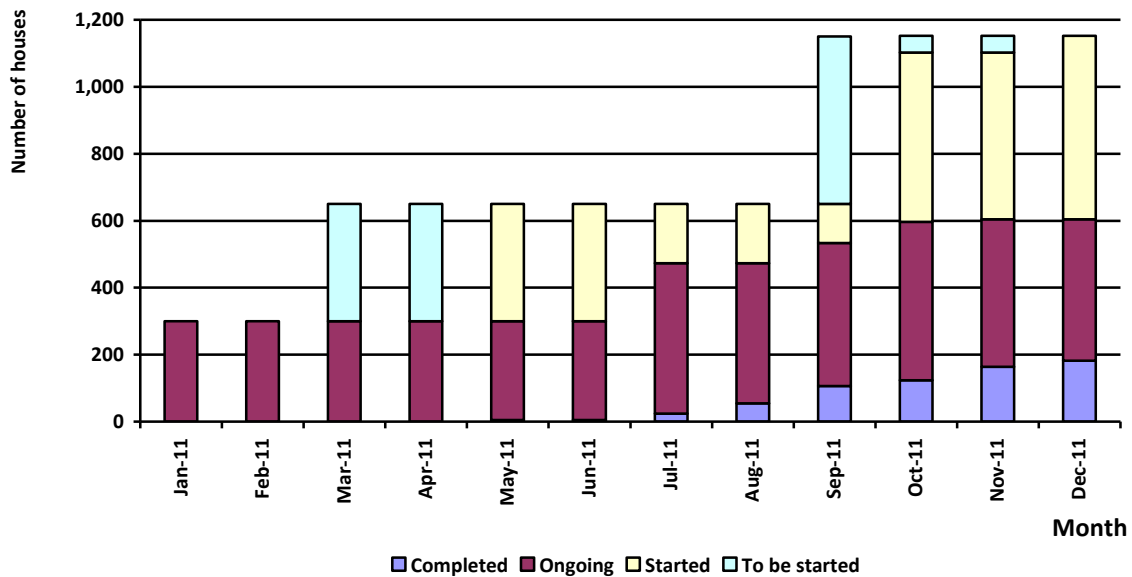
The owner-driven approach and direct-beneficiary cash transfer mechanism is followed by the programme, in order to empower beneficiaries and improve the sense of community ownership. On government recommendation a total of LKR 325,000 is being provided in five instalments to each beneficiary through the bank to construct a new permanent house of minimum size of 500 square feet floor area with two rooms, kitchen, living room, permanent roof and toilet. All these are new housing constructions for the fully damaged houses, except the four model houses started by Australian Red Cross in their post tsunami reconstruction programme and not able to be completed due to the conflict in Jaffna (Maruthankerny GN Division).

Currently there are 1,153 families in the programme (600 families in Kilinochchi and 553 families in Jaffna), supported by emergency appeal funds. Of those house constructions initiated by the programme up to now, 185 houses had been completed, 419 ongoing and 549 started recently (Table 2).

**Table 2: Distribution of beneficiaries assisted by emergency appeal funds (IFRC) Multi-lateral support**

District	DS Division	GN Division	Number of families		Progress
Kilinochchi (600 families)	Karachchi	Krishnapuram	100	300	185 completed, 115 ongoing
		Ampalkulam	100		
		Thirunagar North	4		
		Selvanagar	78		
		Thiruvaiaru	18		
	Poonakary	Kiranchi	200	300	300 started
	Nachchikuda	100			
Jaffna (553 families)	Maruthankerny	Chempianpattu North	135	503	304 ongoing, 199 started
		Chempianpattu South	113		
		Maruthankerny	105		
		Vettilaikerny	42		
		Mullian	50		
		Pokaruppu	34		
		Uduthurai	24		
	Velanai	Kareinagar	50	50	50 started
<b>Total</b>			<b>1153</b>	<b>1153</b>	<b>185 completed, 419 ongoing, 549 started</b>

**Figure 5: Summary of the housing construction progress during last year**



### Red Cross Red Crescent Movement implementation on shelter

In addition to the houses funded multilaterally by IFRC Emergency Appeal, German Red Cross (925 houses – 300 in Kilinochchi and 625 in Mulathivu), Japanese Red Cross Society (240 houses – in Mulathivu) and Norwegian Red Cross (194 houses – in Mannar) are supporting bilaterally. Of the 630 houses funded by German Red Cross in Mulathivu, 299 are new housing constructions while the rest of 326 are repairs. Currently a total of 2,512 families are in the programme constructing/repairing their permanent houses.

**Table 3: Present and expected total movement response under permanent shelter component, utilizing IFRC and bilateral support**

District	DS Division	Donor	No of families		Progress
			New	Repairs	
Kilinochchi	Karachchi	German Red Cross	300	-	300 completed
		IFRC	300	-	185 completed, 115 ongoing
	Poonakary	IFRC	300	-	300 started
Jaffna	Maruthankerny	IFRC	499	4	304 ongoing, 199 started
	Karainagar	IFRC	50	-	50 started
Mulathivu	Oddusuddan	Japanese Red Cross	240	-	16 completed, 224 ongoing
	Maritemapattu	German Red Cross	299	326	255 completed, 370 ongoing
Mannar	Madu	Norwegian Red Cross	194	-	194 ongoing
<b>TOTAL</b>			<b>2182</b>	<b>330</b>	756 completed, 1210 ongoing, 548 started
<b>GRAND TOTAL</b>				<b>2512</b>	

Sri Lanka Army is assisting the communities in housing construction in labor (skilled and unskilled). They specially focus on the destitute families such as women headed/widow families and disable families.

### Community Infrastructure

Three projects were identified to execute under community contracts for the construction of community infrastructure in Kilinochchi as follows:

- i. Ampalkulam – Community hall

- ii. Krishnapuram – Community hall
- iii. Selvanagar – Improvements to the Selvanagar government school with 6 toilets (3 boys and 3 girls) and a fence agreement was signed with village RDSs and the first installment was released while foundation has been completed in Ambalkulum community hall.

### Constraints or challenges

The key issue which delays the finalizing the beneficiary identification and commencing of construction is the inability to prove the beneficiaries’ ownership or legal rights to the land where they live at current due to the fact that relevant documents such as deeds, land permits lost or are not available with them.

Ongoing constraints include pronounced shortage of skilled labour for housing construction activities, escalation of prices of building materials due to the high demand and short supply of construction materials such as sand and timber and difficulties in accessing interior locations due to poor road networks. As overall housing programmes increase, the skilled labour shortage will become critical. All efforts should be made to increase advocacy for construction skill training activities as there will be a need for many hundreds of additional workers and this would be a strong livelihood activity for the next four to five years at least. Government and private sector organizations are looking at opportunity to provide training jointly with other NGOs and UN agencies. The programme is in the process of convincing the relevant authorities in this regard. Construction process is disturbed by the northeast monsoon rains, since it started in November up to January.

Out of the 170,938 families who lost their homes in the north, SLRCS is working with 2,512 families only (which is 1.47 per cent of the total need), building their homes with the emergency appeal funds. With the demand for improved housing, this project is well posed to expand the intervention of the rebuilding process upon available funding. In addition authorities are requesting to increase the amount allocated for housing to LKR 500,000 (present grant is LKR 325,000) assistance provided Red Cross partners to be in par with the proposed Indian assistance.

### Health and care

#### Outcomes

<b>Outcome: The health risks on the affected population are reduced through the provision of preventive, community-level and curative services to 7,000 families (35,000 beneficiaries) in northern districts.</b>	
<b>Outputs</b>	<b>Activities</b>
Enhanced knowledge and improved health practices in target communities through health promotion and prevention interventions.	<ul style="list-style-type: none"> <li>• Conduct community assessments in selected areas to map the most acute health needs and develop and implement community plans with the full participation of the community.</li> <li>• Conduct relevant information, education and communication campaigns to increase awareness on identified health issues through various mediums including media, cultural art forms, posters, billboards etc.</li> <li>• Conduct health awareness events in communities, emphasizing nutrition, disease control (mosquito-borne, water-borne, HIV/AIDS, diabetes/high blood pressure), hygiene, blood donor recruitment, water conservation, mosquito net and water filter distribution.</li> <li>• Identify and train community volunteers using the CBHFA training manual for volunteers.</li> </ul>

	<ul style="list-style-type: none"> <li>• Deliver community-based first aid training to community members.</li> <li>• Train 600 people in first aid and equip them to provide first aid in their communities.</li> </ul>
Improved preparedness and response mechanisms in the target communities to better respond to health in emergencies and epidemics.	<ul style="list-style-type: none"> <li>• Conduct dengue preparedness and response interventions in target communities.</li> <li>• Revise and update SLRCS contingency plans for responding to rapidly emerging epidemics/outbreaks during the course of the year.</li> <li>• Revise and update national disaster response team, branch disaster response team training curriculum by including relevant health topics in an integrated manner with disaster management unit.</li> </ul>
Psychosocial support is provided to affected population	<ul style="list-style-type: none"> <li>• Train 50 staff and volunteers of SLRCS on psychosocial support;</li> <li>• Provide psychosocial support to returning population.</li> </ul>
Enhanced SLRCS profile and capacity at all levels to deliver effective health interventions.	<ul style="list-style-type: none"> <li>• Print and distribute CBHFA volunteer manuals in target branches.</li> <li>• Expand the number of trained community volunteers in target branches.</li> <li>• Produce appropriate volunteer protection and visibility materials for SLRCS.</li> <li>• Document and share best practices and lessons learnt from the SLRCS's work in the communities.</li> </ul>

## Achievements

As a result of the community assessments conducted in August 2011 in Kilinochchi, community plans were developed. These plans were jointly endorsed by Grama Niladharis, Chairmen of RDSs, community leaders and volunteers. These became the bases of Red Cross volunteers in the preparation of Plan of Action and the implementation of activities by the SLRCS Kilinochchi branch with the full participation of the community. The key health components and activities of these plans are conduct health awareness events in communities emphasizing nutrition and disease control, conduct dengue preparedness and response interventions, provide psychosocial support to returning population and support school children with recreational activities/facilities.

A total of 134 persons (SLRC & PCRP staff, school teachers, senior students and community members appointed as "Community Police Personnel" in Kilinochchi by the Police Department) were trained on basic first aid and the delivery of these services in the community through a series of three-day training during the last quarter (see Table 4 below). Similar trainings will be conducted during the quarter.

**Table 4: Basic first aid training calendar**

When	Participants	Male	Female	Total	Location	Remarks
October	SLRCS & PCRP staff	09	04	13	Vavuniya	One training
November & December	Community members appointed as "Community Police Personnel" in Kilinochchi by the Police Department	17	42	59	Kilinochchi	Two trainings
November	School Teachers (52) & O/L students (10)	37	25	62	Kilinochchi	Two trainings
TOTAL		63	71	134		

Thirty volunteers of Kilinochchi & Mulathivu branches were trained on Psychosocial Support Programming (PSP), the first training of that nature under Red Cross Post-Conflict Recovery Programme, in Vavuniya in December 2011. This was a five day residential training conducted in Vavuniya by Shanthiham, an external

agency. The training was aimed at being more practical so participants could acquire supportive communication skills to use in their interaction with beneficiaries. This was combined with evening 'stress reliever' sessions, which incorporated the concepts of mindfulness and acceptance and commitment therapy and offered participants a range of simple therapeutic tools which they could use in their own lives as well. Four peer educators trained through Youth as Agents of Behavioural Changes (YABC) training and one peer educator trained through both YABC and the regional training on PSP (which was conducted in Sri Lanka in 2010) conducted the evening stress reliever sessions. Another 30 volunteers are planned to be trained on PSP in the next quarter.

### Constraints or challenges

The core programme components: health and care and disaster management only started at the end of 2010 since the overall programme had to start from scratch in Kilinochchi and Mulathivu, where Red Cross branches did not exist prior to the programme. The Kilinochchi branch started implementation of its core programmes in January 2011, while these have yet to commence in Mulathivu branch. The VIA programme will be employed as a vehicle for the delivery of those core programmes while mobilizing volunteers and communities in the implementation of above-planned health activities.

## Water, sanitation and hygiene promotion

### Outcomes

<b>Outcome: The risk of waterborne and water-related diseases has been reduced through the provision of safe water, adequate sanitation as well as hygiene promotion to 7,000 families (or 35,000 beneficiaries) in north-eastern districts.</b>	
<b>Outputs</b>	<b>Activities</b>
Increased sustainable access to safe drinking water and basic sanitation	<ul style="list-style-type: none"> <li>• Construct/repair school water and sanitation systems and hygiene promotion for school children.</li> <li>• Construct public drinking water wells.</li> <li>• Construct/repair individual household wells.</li> <li>• Distribute 1,200 household water filters; with training, one per family in targeted communities to produce safe drinking water.</li> <li>• Execute community contracts for reconstruction of water supply infrastructure.</li> </ul>
The health status of the population is improved through behaviour change and hygiene promotion activities.	<ul style="list-style-type: none"> <li>• Distribute water purification tablets to complement hygiene promotion activities where needed.</li> <li>• Conduct hygiene promotion activities linked with water supply and sanitation hardware through the trained volunteers.</li> </ul>
Appropriate sanitation; excreta disposal is provided to the affected families.	<ul style="list-style-type: none"> <li>• Provision of toilets for individual and common use.</li> </ul>

### Achievements

Water and sanitation (WatSan) activities are being implemented in conjunction with shelter; construction and repairing of individual household wells and provision of toilets for individual use. Of those 300 families in Karachchi DS division in Kilinochchi, 270 families had received the water & sanitation grant of LKR 30,000 to construct/repair individual household water and sanitation infrastructure and the rest (30) is about to receive. The priority is given for the sanitation component, construction of the toilet, and if that is already been addressed the funds will be used for the improvements of the water supply. Toilet construction is being

monitored by the Technical Officers to ensure good construction quality. The other 853 families in Kilinochchi and Jaffna will receive with the progress of the housing construction.

The communities including the above families will receive hygiene promotion trainings in future, aiming to improve the health status through behaviour change, as well.

**Table 5: Distribution of the WatSan grant to construct/repair individual household WatSan infrastructure**

	Type of WatSan infrastructure	Number of families
1	Toilet construction	142
2	Toilet repair & well	23
3	Well construction/ repair	8
4	Improvements to the well & water supply	97
	Total	270

Twenty volunteers (7 men and 11 women) of the Kilinochchi & Mulathivu Branches (ten participants each) were trained on well cleaning with the support of ICRC as a joint Movement effort to the program. This was conducted in Kilinochchi in October 2011. Since many of the wells are contaminated with unexploded ordnates, the trainees were further educated on the UXOs (unexploded explosive devises) most likely be in the wells and to contact the demining agencies in such incidences.

### Constraints or challenges

Even if the beneficiaries had been instructed to construct the toilet super structure in line with the house construction, most of them were not able to fulfil the requirement. This caused delays in implementation of individual toilets.

### Livelihoods

#### Outcomes

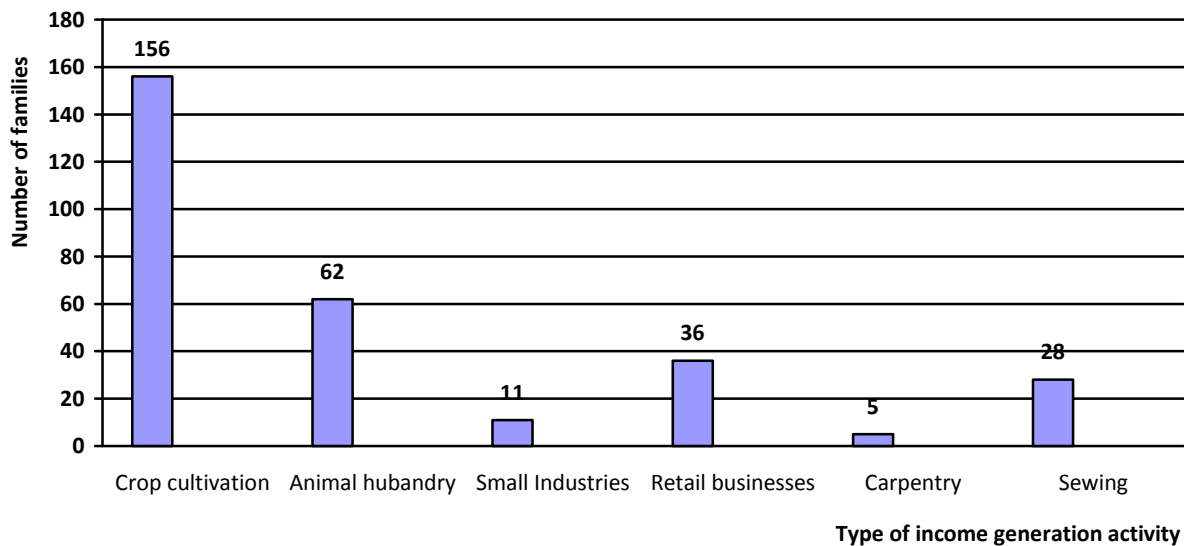
<b>Outcome: To assist 2,500 displaced families (12,500 beneficiaries) in replacing, repairing, re-establishing, strengthening and sustaining their household income.</b>	
<b>Outputs</b>	<b>Activities</b>
Improved livelihoods for the most vulnerable of the affected population	<ul style="list-style-type: none"> <li>Assess the livelihood needs of some 2,500 (12,500 beneficiaries) families within re-settlers.</li> <li>Provide grants/resources to enable households to restart or reinforce livelihoods.</li> </ul>
Sustainably improved community livelihood assets and capacities	<ul style="list-style-type: none"> <li>Conduct household livelihood survey to identify the families in order to provide them the necessary skills and to facilitate access to government and other institutions for assistance on skills acquisition. Families are selected based on specified vulnerability criteria to acquire livelihood assets.</li> <li>Construct facilities for community centres, storage and market space through methods promoting local economy and using local labour.</li> <li>Upgrade minor irrigation facilities, in targeted area as prioritized by GOSL through methods promoting local economy and using</li> </ul>

	<p>local labour.</p> <ul style="list-style-type: none"> <li>• Assist in establishing model farms on gardening.</li> <li>• Beneficiary training on agriculture and integrating farm and composting practices, livelihood skills and vocation training on different trades.</li> </ul>
--	--

### Achievements

The programme encourages community incomes and savings by enhancing productive assets, skills and knowledge through proposed activities. The LKR 35,000 is provided to each family under the programme in two instalments, based on the investment proposal submitted by the beneficiary. Out of the 300 families in Kilinochchi, 298 families have received both the grants and the rest of the two families will receive the second instalment near future. Most (72 per cent) of the families had requested grant to income generation activities related agriculture (crop cultivation and animal husbandry).

**Figure 6: Distribution of the beneficiaries according to the livelihood assistance received for income generation activities**



Three numbers of livelihood workshops were conducted in Jaffna (Maruthankerny) in December with the participation of 234 beneficiaries (144 men and 94 women). Those beneficiaries made aware through these introductory livelihood workshops on potential livelihood avenues, resources and challenges prevailing in the local socio-economic context. Further, the livelihood sub-groups were identified based on the types of livelihood trade, the beneficiaries are already engaged in or to be engaged in.



A group of women in the livelihood workshop assisted by the facilitator. **Photo:** IFRC.

The livelihood programme obtains service of community mobilizers of the Red Cross PCRCP to carry out ground level beneficiary motivation and monitoring under guidance and close supervision of a livelihood and community development expert.

### Constraints or challenges

Changing of intended livelihood and investment plans after receiving the first instalment has become a challenge in post-monitoring. However, the programme is flexible to accept such changes, if they fall under the livelihood frame work of the RC PCRCP.

Lack of well established market for improved productive inputs, such as high-breed and adaptable crop varieties and, extension and support services facilities to introduce modern and advance techniques, particularly for agriculture and livestock sector hinder the potentiality of high productivity. Physical access to some agricultural lands in the area is restricted due to land mines which are yet to be cleared.

Misuse of livelihood instalment on other components of the project, mainly on house construction, is another key challenge experienced.

As a policy of RC PCRCP, misuse or underuse of cash grant instalment of any of the component of RC PCRCP doesn't allow the release of any further instalment, accomplishment of due milestones and tasks of such cases is a crucial challenge.

### Disaster management

#### Outcomes/Expected results

<b>Outcome: Local communities are fully aware of local risks and resources available and are prepared and equipped to respond to disasters. Number of families targeted is 5,000 (25,000 beneficiaries).</b>	
<b>Outputs</b>	<b>Activities</b>
Communities are educated in safe behaviours and principles and values	<ul style="list-style-type: none"> <li>• Develop/conduct awareness raising activities on mine and other risks (information, education and communication material development, school level competitions, humanitarian values).</li> <li>• Support school children with recreational activities/facilities.</li> </ul>
Disaster response tools, mechanisms and systems are established in Kilinochchi and Mulativu districts with adequate capacities to deliver services.	<ul style="list-style-type: none"> <li>• Formation and training of local disaster response teams.</li> <li>• Provision of standard equipments.</li> <li>• Develop local contingency plans for the identified risks/hazards.</li> <li>• Facilitate coordination with government disaster response mechanisms.</li> </ul>
Skilled human resources base is established in two branches to carry out disaster management activities	<ul style="list-style-type: none"> <li>• Conduct disaster management trainings for staff and volunteers.</li> </ul>

### Achievements

Two BDRT kits were purchased for the Kilinochchi & Mulathivu branches. A disaster management training is planned in the next quarter to train more staff and volunteers.

A total of 41 volunteers (6 men and 35 women) of the Mulathivu branch were trained on Mine Risk Education in December. There were two training in Mulathivu.

## Organizational development

### Outcomes

<b>Outcome: Branch-level structures in Kilinochchi and Mulativu districts are able to provide effective support for local population to improve community resilience, to develop healthy lifestyles, prepare for disasters and respond to emergencies.</b>		
<b>Outputs</b>		<b>Activities</b>
Developed SLRCS local structures to facilitate community-level service delivery mechanisms in Kilinochchi and Mulativu districts.		<ul style="list-style-type: none"> <li>• Establish/reactivate SLRCS structures to support volunteer work of units and divisions.</li> <li>• Orientation and support for divisional governance on the Red Cross Red Crescent Movement and constitution, policies and management manuals.</li> <li>• Introduction and assistance for health and disaster management in implementing volunteer management systems at divisional level.</li> <li>• Develop leadership capacity, awareness on good governance among the divisional level leaders.</li> <li>• Support and training on project management and budgeting.</li> <li>• Awareness on SLRCS systems and procedures (finance, planning, activity implementation, reporting, and others) for divisions.</li> <li>• Support in formation of divisional health and DM volunteer action groups and induction trainings.</li> <li>• Support for conducting integrated assessments.</li> <li>• Support for initiation of community services.</li> <li>• Support for development of fundraising and income-generation plans for divisions.</li> <li>• Support community committees in raising common concerns, working to minimize impacts and participate in Red Cross activities.</li> <li>• Accreditation of the beneficiary committees as Red Cross units/divisions.</li> <li>• Establish a system of regular activity reporting in the field, project monitoring, donor reporting and information dissemination.</li> <li>• Strengthen monitoring and reporting systems in the branches.</li> </ul>

### Achievements

The programme is in the process of strengthening of the SLRCS's organizational capacity mainly in Kilinochchi and Mulathivu districts, including mobilizing the appropriate skills and competencies in branch staff and volunteers to provide services to local communities, in strengthening the SLRCS branch structures, and in maintaining the branch capacities to ensure delivery of services to communities in the longer run. Furthermore programme is planning to support Mannar and Jaffna branches in this quarter.

SLRCS, IFRC, CRC, GRC and ICRC are jointly supporting the OD support programme for Kilinochchi and Mulathivu branches. CRC and GRC joined for long term partnerships with the Kilinochchi and Mulathivu Branches respectively primarily for the construction of new branch building. Furthermore ICRC also committed

their support to strengthen both branches. IFRC and SLRCS are planning to have joint programmes with the partners such as GRC, CRC and JRC in future.



### *The first workshop by the Mulathivu branch after re-establishment: Red Cross Dissemination workshop*

A total of 52 volunteers (7 men and 45 women) of the Mulathivu branch was joined the Red Cross Dissemination workshop. This was conducted from 17 to 20 November, 2011 in Mulathivu. There were two training of two days.

This workshop was the second training of its kind conducted through the VIA programme. This sought to bring the head to heart or non-cognitive to cognitive approach to learning that is promoted by YABC, in order to revitalise this standard Red Cross training. Six peer educators trained under YABC joined as co-facilitators adding energy and colour to the workshop.

## **Constraints or challenges**

The newly recruited staff of the branch need dissemination of Red Cross Red Crescent information, capacity building programmes and supports to perform the duties efficiently and effectively.

## **Programme monitoring and evaluation**

At the initial stage of the programme a base line survey was conducted. This is a very important tool to measure the progress and outcome of the interventions. The project will administer the same questionnaire with the beneficiary families, three months after the completion as an end line survey.

The operation management team maintains and implements regular monitoring mainly through an electronic database to follow all the vital milestones of the programme and putting in transparency and accountability to the programme. Operational implementation and coordination meetings take place periodically as planned, including weekly and monthly progress review meetings. Monthly follow up of the work plan, IFRC housing construction monitoring system IFRC bi-weekly management update and periodical operations updates provide enough support to the monitoring mechanism. The IFRC receive reports from the field and undertake regular visits and/or spot-checks. This helps to identify and, where possible and necessary, resolve any problems. Regular and ad hoc reports provide necessary information in relation to the progress of the operation; and any

changes in the situation during the reporting period and any particular problem, constraint or unmet need. Technical support and quality assurance is supported by programme partners within the management team and with technical departments of national headquarters and PNS teams in Colombo and field. IFRC delegation supported by Asia Pacific disaster management unit ensures the implementation of operational reviews and evaluation as set in the plan of action.

An overall external evaluation will be commissioned after final completion of the programme. Resources needed would be shared between all partners involved. The wide-scale evaluation is vital at the end of the operation to ensure institutional learning.

The earlier requirement of obtaining permission from the Presidential Task Force and Ministry of Defense to operate in northern Sri Lanka is now not needed. SLRCS and IFRC were granted permission to work in the north. With this facility, implementation and monitoring activities became more efficient and effective and being done periodically as required.

## Logistics

For the success of this operation, efficient and timely coordination and delivery of logistical support should be met. The IFRC liaises and coordinates actions with all appropriate key logistics actors to ensure that logistics operation uses all information and resources as efficiently and effectively as possible.

## Communications – Advocacy and public information

The steady flow of timely and accurate information between those working in the field and other major stakeholders will support the programme objectives of this emergency appeal, increase the profile, funding and other support for the Sri Lanka Red Cross Society and the IFRC, and provide a platform on which to advocate the interests of vulnerable populations. In close collaboration with the operation, those affected by this emergency will be provided with information to support their relief and recovery. Donors and national societies will receive information and materials they can use to promote this operation and communications initiatives will help to build the information and public relations capacity of the Sri Lanka Red Cross Society for future emergencies.

Monthly [Progress reports](#) dies were published on the SLRCS website during the reporting period and available in the SLRCS web site.

A documentary on RC PCRCP “Half way home” was produced to promote the programme and provide more assistance to people in need, disseminated in different forums to positive reception. This documentary can be accessed through the following link - <http://www.youtube.com/watch?v=x1Di3ImRX78>. This had been produced a continuation to the first documentary produced “Bunkers to Ice cream” (<http://www.youtube.com/watch?v=GBRE6iwabzk>).

The PCRCP programme has been selected by UNHRC/IFRC/UN-Habitat jointly to be included as case study in the upcoming publication Shelter Projects 2010.

## How we work

All IFRC assistance seeks to adhere to the Code of Conduct for the International Red Cross and Red Crescent Movement and Non-Governmental Organizations (NGO's) in Disaster Relief and the Humanitarian Charter and Minimum Standards in Disaster Response ([Sphere](#)) in delivering assistance to the most vulnerable.

The IFRC's vision is to:

Inspire, encourage, facilitate and promote at all times all forms of humanitarian activities by National Societies, with a view to preventing and alleviating human suffering, and thereby contributing to the maintenance and promotion of human dignity and peace in the world.

The IFRC's work is guided by Strategy 2020 which puts forward three strategic aims:

1. Save lives, protect livelihoods, and strengthen recovery from disaster and crises.
2. Enable healthy and safe living.
3. Promote social inclusion and a culture of non-violence and peace.

## Contact information

**For further information specifically related to this operation please contact:**

- **Sri Lanka Red Cross Society:**
  - Tissa Abeywickrama, director general); email: [directorgen@redcross.lk](mailto:directorgen@redcross.lk); phone: +94 11 269 4487; fax: +94 11 269 5434
- **IFRC country office in Sri Lanka Delegation:**
  - Bob McKerrow, head of country office; email: [bob.mckerrow@ifrc.org](mailto:bob.mckerrow@ifrc.org); phone: +94 11 452 8698; fax: +94 11 268 2671
- **IFRC regional office in India:**
  - Azmat Ulla, head of regional office; email: [azmat.ulla@ifrc.org](mailto:azmat.ulla@ifrc.org); phone: +91 11 2411 1125; fax: +91 11 2411 1128
  - Maija Liisa Fors, regional programme coordinator; email: [majjaliisa.fors@ifrc.org](mailto:majjaliisa.fors@ifrc.org); phone: +91 11 2411 1125; fax: +91 11 2411 1128.
- **IFRC Asia Pacific zone office in Kuala Lumpur:**
  - Al Panico, head of operations; email: [al.panico@ifrc.org](mailto:al.panico@ifrc.org); phone: +603 9207 5700
  - Susil Perera, operations coordinator; email: [susil.perera@ifrc.org](mailto:susil.perera@ifrc.org); phone: +603 9207 5724; mobile: +6012 207 6534
  - Jeremy Francis, regional logistics coordinator; email: [jeremy.francis@ifrc.org](mailto:jeremy.francis@ifrc.org); mobile: +6012 298 9752; fax: +603 2168 8573
  - Alan Bradbury, head of resource mobilization and planning, monitoring, evaluation and reporting; email: [alan.bradbury@ifrc.org](mailto:alan.bradbury@ifrc.org); phone: +603 9207 5771

For pledges of funding: [zonerm.asiapacific@ifrc.org](mailto:zonerm.asiapacific@ifrc.org)

*<interim financial report attached below; click here to return to the title page>*

Selected Parameters	
Reporting Timeframe	2010/4-2011/12
Budget Timeframe	2010/4-2013/4
Appeal	MDRLK002
Budget	APPROVED

All figures are in Swiss Francs (CHF)

## I. Consolidated Funding

	Disaster Management	Health and Social Services	National Society Development	Principles and Values	Coordination	TOTAL
<b>A. Budget</b>	<b>6,167,580</b>					<b>6,167,580</b>
<b>B. Opening Balance</b>	<b>0</b>					<b>0</b>
<b>Income</b>						
<u>Cash contributions</u>						
<i>Australian Red Cross</i>	3,846,285					3,846,285
<i>Irish Red Cross Society</i>	617,513					617,513
<i>Red Crescent Society of the United Arab Emirates</i>	11,547					11,547
<i>Red Cross of Monaco</i>	22,196					22,196
<i>The Canadian Red Cross Society</i>	485,520					485,520
<i>The Republic of Korea National Red Cross (from Republic of Korea - Private Donors)</i>	1,073,853					1,073,853
<b>C1. Cash contributions</b>	<b>6,056,914</b>					<b>6,056,914</b>
<b>C. Total Income = SUM(C1..C4)</b>	<b>6,056,914</b>					<b>6,056,914</b>
<b>D. Total Funding = B + C</b>	<b>6,056,914</b>					<b>6,056,914</b>
<b>Appeal Coverage</b>	<b>98%</b>					<b>98%</b>

## II. Movement of Funds

	Disaster Management	Health and Social Services	National Society Development	Principles and Values	Coordination	TOTAL
<b>B. Opening Balance</b>	<b>0</b>					<b>0</b>
<b>C. Income</b>	<b>6,056,914</b>					<b>6,056,914</b>
<b>E. Expenditure</b>	<b>-1,979,561</b>					<b>-1,979,561</b>
<b>F. Closing Balance = (B + C + E)</b>	<b>4,077,353</b>					<b>4,077,353</b>

International Federation of Red Cross and Red Crescent Societies

MDRLK002 - Sri Lanka - Support for IDP

Appeal Launch Date: 12 apr 10

Appeal Timeframe: 12 apr 10 to 12 apr 13

Interim Report

Selected Parameters	
Reporting Timeframe	2010/4-2011/12
Budget Timeframe	2010/4-2013/4
Appeal	MDRLK002
Budget	APPROVED

All figures are in Swiss Francs (CHF)

### III. Consolidated Expenditure vs. Budget

Account Groups	Budget	Expenditure					TOTAL	Variance
		Disaster Management	Health and Social Services	National Society Development	Principles and Values	Coordination		
A							B	A - B
<b>BUDGET (C)</b>		<b>6,167,580</b>					<b>6,167,580</b>	
<b>Relief items, Construction, Supplies</b>								
Construction - Housing	2,828,828	1,263,292				1,263,292	1,565,536	
Construction - Facilities	265,486	4,423				4,423	261,063	
Clothing & Textiles		712				712	-712	
Water, Sanitation & Hygiene	312,080	11,204				11,204	300,876	
Teaching Materials	1,947						1,947	
Other Supplies & Services	883,497						883,497	
<b>Total Relief items, Construction, Supplies</b>	<b>4,291,838</b>	<b>1,279,631</b>				<b>1,279,631</b>	<b>3,012,207</b>	
<b>Land, vehicles &amp; equipment</b>								
Vehicles	8,036	6,706				6,706	1,330	
Computers & Telecom	16,369	5,954				5,954	10,415	
Office & Household Equipment	13,081	5,417				5,417	7,664	
Others Machinery & Equipment	4,821						4,821	
<b>Total Land, vehicles &amp; equipment</b>	<b>42,307</b>	<b>18,077</b>				<b>18,077</b>	<b>24,230</b>	
<b>Logistics, Transport &amp; Storage</b>								
Distribution & Monitoring	1,062	133				133	929	
Transport & Vehicles Costs	91,869	63,463				63,463	28,406	
Logistics Services	44,663	600				600	44,063	
<b>Total Logistics, Transport &amp; Storage</b>	<b>137,594</b>	<b>64,196</b>				<b>64,196</b>	<b>73,397</b>	
<b>Personnel</b>								
International Staff	140,661	2,272				2,272	138,389	
National Staff	113,079	73,933				73,933	39,146	
National Society Staff	219,278	94,120				94,120	125,158	
Volunteers		77				77	-77	
<b>Total Personnel</b>	<b>473,018</b>	<b>170,402</b>				<b>170,402</b>	<b>302,616</b>	
<b>Consultants &amp; Professional Fees</b>								
Consultants	123,810	77,579				77,579	46,231	
Professional Fees	16,083	8,267				8,267	7,816	
<b>Total Consultants &amp; Professional Fees</b>	<b>139,893</b>	<b>85,846</b>				<b>85,846</b>	<b>54,047</b>	
<b>Workshops &amp; Training</b>								
Workshops & Training	126,172	28,017				28,017	98,156	
<b>Total Workshops &amp; Training</b>	<b>126,172</b>	<b>28,017</b>				<b>28,017</b>	<b>98,156</b>	
<b>General Expenditure</b>								
Travel	16,126	3,193				3,193	12,933	
Information & Public Relations	55,569	18,296				18,296	37,273	
Office Costs	31,797	18,573				18,573	13,224	
Communications	22,414	5,563				5,563	16,851	
Financial Charges	99,997	50,687				50,687	49,310	
Other General Expenses	146,657	38,404				38,404	108,252	
Shared Office and Services Costs	174,575						174,575	
<b>Total General Expenditure</b>	<b>547,135</b>	<b>134,716</b>				<b>134,716</b>	<b>412,419</b>	
<b>Contributions &amp; Transfers</b>								
Cash Transfers National Societies	33,198	31,661				31,661	1,537	
<b>Total Contributions &amp; Transfers</b>	<b>33,198</b>	<b>31,661</b>				<b>31,661</b>	<b>1,537</b>	
<b>Operational Provisions</b>								
Operational Provisions		46,195				46,195	-46,195	
<b>Total Operational Provisions</b>		<b>46,195</b>				<b>46,195</b>	<b>-46,195</b>	
<b>Indirect Costs</b>								

**International Federation of Red Cross and Red Crescent Societies**

MDRLK002 - Sri Lanka - Support for IDP

Appeal Launch Date: 12 apr 10

Appeal Timeframe: 12 apr 10 to 12 apr 13

Interim Report

Selected Parameters	
Reporting Timeframe	2010/4-2011/12
Budget Timeframe	2010/4-2013/4
Appeal	MDRLK002
Budget	APPROVED

All figures are in Swiss Francs (CHF)

**III. Consolidated Expenditure vs. Budget**

Account Groups	Budget	Expenditure					TOTAL	Variance
		Disaster Management	Health and Social Services	National Society Development	Principles and Values	Coordination		
A							B	A - B
<b>BUDGET (C)</b>		<b>6,167,580</b>					<b>6,167,580</b>	
Programme & Services Support Recov	376,425	120,818					120,818	255,607
<b>Total Indirect Costs</b>	<b>376,425</b>	<b>120,818</b>					<b>120,818</b>	<b>255,607</b>
<b>TOTAL EXPENDITURE (D)</b>	<b>6,167,580</b>	<b>1,979,561</b>					<b>1,979,561</b>	<b>4,188,019</b>
<b>VARIANCE (C - D)</b>		<b>4,188,019</b>					<b>4,188,019</b>	