

www.ifrc.org
Saving lives,
changing minds.

Emergency appeal Burundi: Population Movement

 International Federation
of Red Cross and Red Crescent Societies

**Emergency appeal n° MDRBI008
GLIDE n° OT-2012-000193-TZA
15 November, 2012**

This Preliminary Emergency Appeal seeks CHF 674,731 in cash, kind, or services to support the Burundi Red Cross (BRC) to assist 14,643 beneficiaries (or 2,615 households) for 3 months. This operation will be completed by February 2013. An emergency appeal will be issued within one month.

CHF 100,000 from the IFRC's Disaster Relief Emergency Fund (DREF) has been allocated to assist in starting up the operation.



Burundian Refugees waiting to be assisted at the transit centres (Photo BRC)

Since 2002, over 525,000 Burundians have voluntarily returned home. More than 94,000 Burundians are still refugees in neighboring countries, including in Tanzania. In 2011, the Government of Tanzania decided to close Mtabila Camp and subsequently, to repatriate the refugees by the end of 2012. As a result, a cessation clause has been invoked for roughly 35,000 refugees who are no longer classified with official refugee status as of 1 August 2012. On 8 October 2012, the governments of Burundi and Tanzania, UNHCR, partners and donors met and agreed to repatriate the "former" Burundian refugees.

As of 14 November, the number of such returnees was 7,332 people. Of these, 19% are women, 19% are men and 61% are children. People with special needs represent 3% of the returnees.

Based on the situation, this Emergency Appeal responds to a request from the Burundi Red Cross, and focuses on providing support to take an appropriate and timely response in delivering assistance and relief in the following sectors: reception and orientation; psychosocial support; Restoring Family Links (RFL); emergency shelter; emergency health and water, sanitation and hygiene.

This operation will prioritise ongoing and detailed assessments of the needs of the returnees as the situation is fluid and assistance from other stakeholders is still being discussed. BRC will coordinate with other stakeholders and the findings of assessments and monitoring will be incorporated into a subsequent revised Emergency Appeal, which will be launched one month after this Preliminary Emergency Appeal.

[<click here to view the attached Emergency Appeal Budget; here to link to a map of the affected area; or here to view contact details>](#)

The situation

Late 2011, the Government of Tanzania decided to close the Mtabila refugee camp (in the District of Kigoma, in Western Tanzania) by December 31 2012 - the camp is currently hosting a number of refugees, including about 37,592 Burundian refugees who for the most part, fled their country in 1993 following the killing of President Melchior Ndadaye, and the civil war that followed.

From joint Government of Tanzania/UNHCR interviews of the refugees and appeal exercises from September 2011 to mid 2012, it was determined that 2,521 individuals still needed international protection. Hence, the Government of Tanzania agreed to transfer them to Nyarugusu refugee camp.

The Government of Tanzania then decided to repatriate the remaining Burundian refugees who were deemed not in need of protection before the end of 2012, and the refugees were notified of this decision. A phased closure of camp zones was supposed to be under way and should have corresponded with cessation of all assistance. This plan has not worked so far, as about 35,000 Burundian refugees are reluctant to voluntarily return as has been planned by the Tanzanian Government and by UNHCR.

On 23 May 2012, 3 battalions of the Tanzanian National Service moved in some areas of Mtabila camp. While this was part of a long-standing plan by the Government of Tanzania, the move was supposed to take place after the closure of the camp. This move is likely to pose possible protection challenges, especially for women and girls. The Government of Tanzania, in August 2012, also declared a cessation of refugee status to those 35,000 Burundian refugees.

The Tanzania Red Cross Society (TRCS), in collaboration with its partners, has been providing services in the refugee camps specifically curative and preventive health, nutrition, water and sanitation services. In the refugee repatriation process, through a DREF (<http://ifrc.org/en/publications-and-reports/appeals>), the TRCS has been working on pre-departure medical screening, departure screening and ambulance escorts of the repatriation convoys from the refugee camp up to the border point of the receiving country.

On the other side of the border, Burundi Red Cross (BRC) has been engaged in various coordination mechanisms and meetings with the government, UNHCR and other agencies to prepare for receiving the returnees from Tanzania. The BRC is in the process of finalizing its response engagement along its mandate and is based on actual gaps in the planned services by government and other aid agencies. The table below indicates the number of returnees from 2002 to 2010 distributed in all the provinces throughout the country.

Table I: Number of refugees repatriated from 2002 to 2010 by province (source: Returnees and IDPs rehabilitation project)

Province	2002	2003	2004	2005	2006	2007	2008	2009	2010	Total
Bubanza	271	685	499	262	370	143	307	253	175	2,965
Buja Mairie	1,205	2,591	2,049	1,755	887	607	548	542	401	10,585
Buja Rural	911	1,775	695	593	703	430	692	293	513	6,605
Bururi	3,288	5,837	4,766	3,247	4,164	2,606	10,486	7,076	857	42,327
Cankuzo	1,204	9,217	2,904	1,595	1,659	2,457	3,872	38	28	22,974
Cibitoke	914	955	395	651	1,273	222	207	150	695	5,462
Gitega	936	2,824	2,795	1,864	1,737	1,149	2,799	260	91	14,455
Karuzi	1,892	4,846	5,878	4,373	3,974	2,247	4,596	300	38	28,144
Kayanza	372	780	1,032	646	765	324	738	97	79	4,833
Kirundo	6,431	4,182	6,155	8,244	2,163	2,573	4,522	1,165	53	35,488
Muramvya	140	931	914	618	667	309	740	81	17	4,417
Muyinga	10,933	11,983	12,825	15,921	6,232	8,286	13,745	394	96	80,415
Mwaro	8	110	60	46	73	18	87	32	-	434
Makamba	4,838	21,453	14,450	17,651	11,821	8,038	30,858	18,737	390	128,236
Ngozi	2,032	1,779	2,691	2,707	1,583	1,142	1,861	257	65	14,117
Rutana	3,782	5,381	8,920	4,138	3,686	5,074	6,455	2,447	93	39,976
Ruyigi	6,466	14,862	31,412	7,745	6,366	6,093	13,484	272	55	86,755
Total	45,623	90,191	98,440	72,056	48,123	41,718	95,997	32,394	3,646	528,188

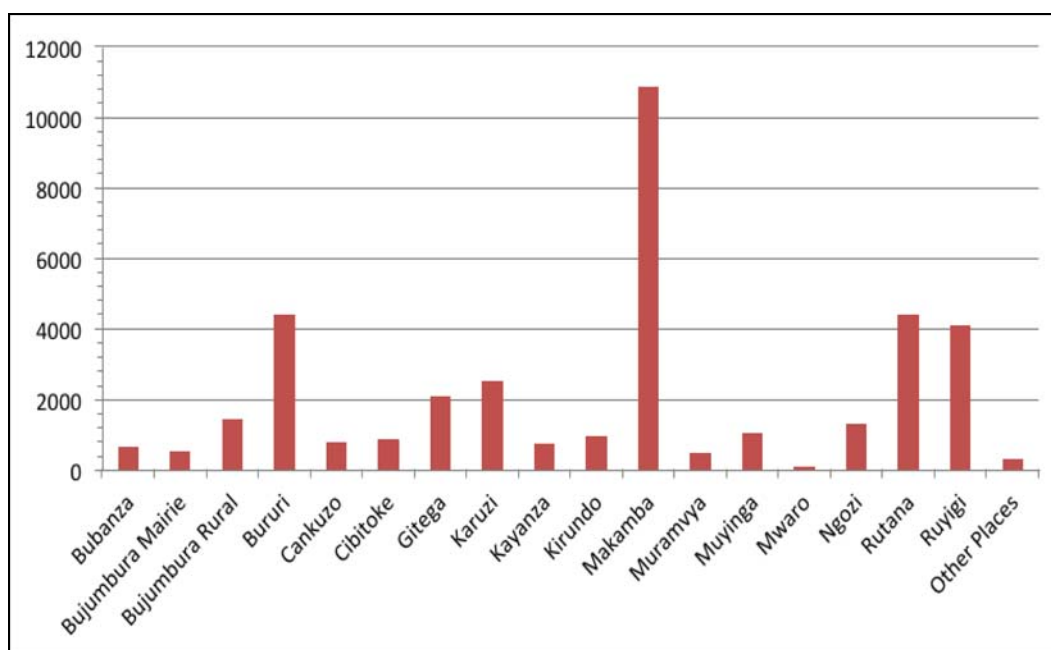
The table above indicates that Bururi, Makamba, Rutana and Ruyigi provinces have received the largest number of returning "former" refugees. Considering the above information, BRC will focus this operation in

Makamba and Bururi provinces given its presence and current operation in the assistance of returnees in the above-mentioned provinces. Data from UNHCR and the inflows of returnees from Tanzania attest to that.

The projections for current repatriations are not far from the patterns established from previous events. The projection of the returnees was calculated based on registration of returnees prior to the departure for Burundi.

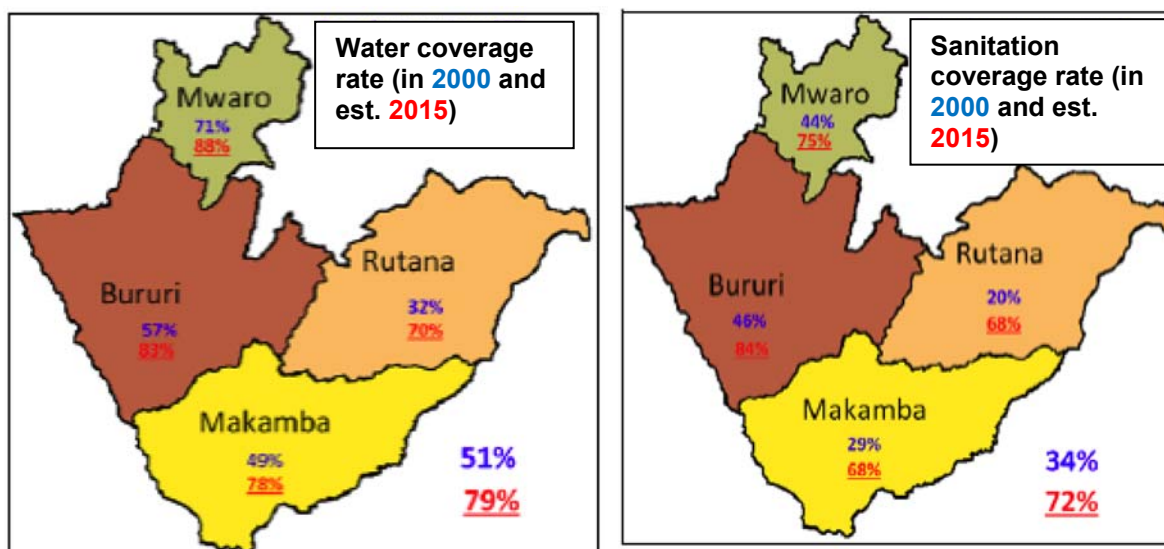
As indicated in the figure below, it is expected that Bururi and Makamba provinces will receive similar quantities of returns, which will put more pressure on the meager services currently obtained in these locations.

Projection of returnees to various parts of the country



The additional returnees coming back to the provinces will add pressure on social service departments. Makamba and Bururi have been affected by a outbreak of cholera due to unsafe drinking water and lack of latrines. Data collected from the government on the coverage of safe drinking water is not very encouraging.

The maps below indicate the water and sanitation coverage in the provinces with the highest numbers of returnees. The percentages indicated in blue are figures of water and sanitation coverage from 2000 whilst the figures in red indicate the projection for 2015.



Coordination and partnerships

The Ministry of National Solidarity has the overall lead role and is therefore in charge of coordinating the operation on behalf of the Burundian Government. The above ministry is also in charge of delivering the official Burundian identity cards to the returnees as well as the national health insurance card.

PARESI (Projet d'appui à la Reinsertion des Sinistrés¹), a division of the Ministry of National Solidarity is in charge of transporting small groups of returnees composed of less than 20 families.

UNHCR is in charge of providing technical support to the Ministry of National Solidarity, and has funded a number of activities within the operation, including the provision of non food items (NFIs). UNHCR is also responsible for the protection of the refugees. WFP has been providing food parcels to the returnees.

Caritas is an implementing partner of WFP and, on behalf of WFP, has been distributing dry rations, which include cereals, pulses, vegetable oil and salt (about 2,100 Kcal per person per day).

The International Rescue Committee (IRC) is an implementing partner for UNHCR, and has been in charge of camp set-up and camp management, as well as logistics, distribution of NFIs (a blanket, a mosquito net, clothes for adults and children, a jerry can, soap, a hoe, a plastic mat) as well as transportation by vehicle for groups of returnees of 20 families or more.

African Humanitarian Assistance (AHA) is the health focal point, and therefore in charge of the health care of the returnees.

The Fédération Nationale des Coopératives du Burundi (FENACOBU) is providing on behalf of UNHCR, a sum of 50,000 Burundi Francs to each family of the returnees (about USD 40) in two tranches (10,000 Burundi Francs at the arrival in the transit camp and the balance on arrival in the final destination in the district). UNICEF is providing school supplies and FAO is providing seeds of carrots, cabbage, onions, tomatoes and eggplants.

Coordination meetings have been taking place in Bujumbura every fortnight, under the coordination of the Ministry of National Solidarity, with the support of UNHCR. Daily coordination meetings have also been taking place in Makamba, near the main border entry point for the returnees, again under the coordination of the Ministry of National Solidarity with the technical support of UNHCR. Burundi Red Cross participated in all the above coordination meetings and has been sharing information with key stakeholders in formal and informal forums.

Regular coordination has also been taking place between Burundi Red Cross and the ICRC, which is supporting Restoration of Family Links activities in the camp. Burundi Red Cross has also been

¹ Returnees and IDP rehabilitation project

coordinating its activities with other Movement partners who are present in Burundi, including the Belgian (both Flemish and French) Red Cross.

Red Cross and Red Crescent action

Since the beginning of the repatriation operation on 31 October 2012, Burundi Red Cross has been taking part along with other partners, in the operation aimed at receiving the returnees. Burundi Red Cross has mobilized 10 first-aid teams composed of 10 trained volunteers, working in morning and afternoon shifts. The National Society has been providing psychosocial support to the returnees, as well as orientation on how the returnees can obtain basic services from the government, such as national identity documents, government health insurance card and other services.

Burundi Red Cross has also been providing water trucking to the transit centers that have no water, delivering 40,000 liters of water per day over the last 10 days. The BRC has also been providing Restoring Family Links services to the returnees, by helping them connect with their friends and families.

Burundi Red Cross has also been monitoring all potential entry points, to make sure that if some returnees come into the country through the entry points that UNHCR and other actors are not monitoring, that those returnees still receive adequate services.



Burundi RC volunteers assisting Refugee families.
Photo BRC

The needs

The situation requires immediate needs assessments, in order to clarify the exact needs of the returnees. While volunteers are already working with the returnees, there has not been time, or indeed capacity to undertake a thorough assessment, so the repatriation operation is being managed based on projections and assumptions and second hand information disseminated at coordination meetings.

So far, the *immediate needs* that have been identified include psychosocial support because of the trauma that the returnees have had to go through in being forced out of Tanzania. Additionally, people are suffering from chronic conditions, and others who need medical attention, including first aid and referral services. Unaccompanied minors are vulnerable, and in need of special care and referral to existing services offered by the government and by other agencies.

Returnees are also in need of information on where they can obtain basic services from the Red Cross, from the government and from other organizations. Those who need to be reunited with families require support in the form of Restoring Family Links services. This will be done in collaboration with ICRC.

A group of returnees that will be going to Nyanza Lac and Rumonge, districts that are affected by cholera will need direct support in terms of clean drinking water, adequate sanitation and hygiene education as well as other preventive care (hygiene promotion, health promotion, etc.) against cholera. The assessments planned at the start of this operation will look at the health risks and needs of the returnees and the host communities.

To date, most of the returnees have been coming in through designated entry points, especially Mugina. However, Burundi Red Cross has continued to monitor through its local branches and local Hill Units, all the potential entry points outside of the designated points where returnees might come through (including Buhema, Nyakazi, Murambi, Bigina and Gatabu).

Emergency shelter is another category of immediate needs for returnees. About 40% of the total number of the returnees who will be returning to particularly vulnerable districts will need special assistance from Burundi Red Cross, including temporary shelter assistance. Based on further needs assessment

intermediate and longer term shelter needs will be identified and be captured in the revised appeal. At the moment, returnees are receiving an emergency NFI kit supported by UNHCR, however, no agency is providing temporary shelter.

Medium term and long term needs include protection, permanent shelter, as well as land for household garden and agriculture. Other long-term needs that the returnees will face relate to their reintegration into their new communities, receiving protection, including ways of earning a living, putting their children through school, of having access to health services and WatSan as well as other forms of assistance that will help them become independent contributors to their new communities.

As the country is receiving these former refugees into Burundi, it is also combating a cholera outbreak affecting 7 districts (or communes) in 6 provinces. Some of the returnees will be going to the very districts where cholera is present. Delivery of social amenities in Burundi is stretched to a limit where authorities are struggling in their efforts to provide for the communities. Burundi has been receiving returnees since 2002 and the Burundi Red Cross has been active in the assistance to the returnees by offering assistance during screening and in restoring family links. As indicated, data from 2002 to 2010 previous repatriations indicate the provinces of Bururi and Makamba always receive the largest share of returnees. The large influx of refugees makes them particularly vulnerable to disease outbreaks.

Beneficiary selection:

The returnees are going back to their communes of origin, which means that almost every part of Burundi is going to receive some returnees. However, about 40% are going back to 6 communes/districts², which have very little capacity to assist them. Those districts are: Nyanza Lac, Rumonge, Kayogoro, Mabanda, Kibago and Makamba as per the table below.

Bururi Province			Makamba Province			Total
Rumonge	Kayogoro	Makamba	Mabanda	Kibago	Nyanza Lac	
628 HH	132 HH	44 HH	101 HH	62 HH	1,648 HH	2,615 HH
3,517 people	739 people	246 people	566 people	347 people	9,228 people	14,643 people

Therefore, the efforts of the Burundi Red Cross will focus on those. Note that Nyanza Lac and Rumonge are both experiencing a cholera outbreak.

The target beneficiaries will include unaccompanied minors as well as the elderly with limited mobility and who are therefore unable to independently take care of themselves. People suffering from chronic diseases constitute another category of people with special needs.

Exact figures for each category of beneficiaries are still being compiled and there is a need for more detailed needs assessments, for which this preliminary emergency appeal is requesting support.

The proposed operation

At the moment, the exact extent of the needs of the returnees as well as their exact numbers and categories according to the precise types of assistance that the returnees will need is not yet clear. That is why there is a need for a detailed assessment, which this preliminary emergency appeal will support.

In the meantime, the operation that is being proposed by this preliminary emergency appeal will cover: for returnees going back to Nyanza Lac, Rumonge, Kayogoro, Mabanda, Kibago and Makamba (about 14,643 individuals in 2,615 households). Support will be provided as follows:

1. **Relief:** reception and orientation of the returnees (provision of information on how to obtain government identity documents, the health insurance card, etc.), Restoring Family Links (RFL), psychosocial support, first aid and referral and temporary shelter, NFI's as well as monitoring of non-official entry points.
2. **Emergency health:** the operation is proposing to provide epidemiological surveillance, alert and referral of cases to health facilities. Through this operation, Burundi RCS will provide sensitization on vaccination, on the need for pre-natal consultations, on gender-based violence and on the prevention of sexually transmitted diseases.

² This is based on the UNHCR assessments and beneficiaries interviews

3. **Water and sanitation:** Burundi RCS will provide hygiene promotion, household-level water treatment, sanitation (including the appropriate use of latrines), using the PHASTER approach.
4. Wherever possible, to ensure that returnees understand their entitlement and access services, a system of beneficiary communication will be developed and utilized.

Shelter, settlements and NFI

Outcome: 2,615 returning families are provided with emergency assistance including temporary shelter kits and appropriate NFIs	
Outputs (expected results)	Activities planned
2,615 households are provided with appropriate shelter assistance. 2,615 households receive NFI kits	<ul style="list-style-type: none"> • Conduct rapid emergency shelter and HH items needs and capacity assessments • Based on the assessment findings define appropriate shelter kit and HH items kit content. • Conduct shelter training based on the kit defined to provide support to volunteers engaged in the response • Develop beneficiary targeting strategy and registration system to deliver intended assistance. • Procure and distribute shelter kits and control supply movements from point of dispatch to end user. • Provide technical support to the returning families with the construction of the temporary shelter. • Procure and distribute HH kits and control supply movements from point of dispatch to end user. • Monitor and evaluate the distribution of shelter kits and provide reporting on distributions. • Develop an exit strategy.

Emergency health and care

Outcome: The health risks of the emergency on the affected population is reduced through the provision of preventive health and hygiene support to 14,643 returnees (2,615 families) and 2,929 individuals (522 households) being 20% of the host families in Nyanza Lac, Rumonge, Kayogoro, Mabanda, Kibago and Makamba for 3 months.	
Outputs (expected results)	Activities planned
Further mortality and morbidity of 2,615 families are prevented through a primary health care oriented programme.	Using the volunteer epidemiological control module: <ul style="list-style-type: none"> • Assess the health risks of the affected population in terms of health services, prevention, health needs and risk of communicable diseases (including cholera). Conduct epidemiological surveillance of the target population and reference of cases to health facilities • Provide sensitization and reference for vaccination at health centres • Provide sensitization about the need for pre-natal consultations • Provide sensitization on the prevention of gender-based violence • Provide sensitization on the prevention of sexually transmitted diseases
Psychosocial support (PSP) is provided to 2,615 families and 130 staff/volunteers of the Burundi Red Cross as needed.	<ul style="list-style-type: none"> • Provide psychosocial support to 130 staff and volunteers of Burundi RC engaged in emergency response. • Train 30 staff and volunteers of Burundi RC on PSP intervention. • Provide Psycho-Social Support to 2,687 families affected by the emergency

Water, sanitation, and hygiene promotion

Outcome: The risk of waterborne and water related diseases (particularly cholera) is reduced through provision of safe water, adequate sanitation and hygiene promotion to 14,643 returnees (2,615 families) and 2,929 individuals (522 households) representing 20% of the host families in Nyanza Lac, Rumonge, Kayogoro, Mabanda, Kibago and Makamba for 3 months.	
Outputs (expected results)	Activities planned

Provision of clean water, adequate sanitation and hygiene promotion to selected beneficiaries.	<ul style="list-style-type: none"> • Continue detailed WatSan needs assessments to understand immediate and mid term needs of the communities (involving RDRT specialised in WatSan) • Conduct hygiene promotion focussing on household-level water treatment and safe storage, sanitation and personal hygiene • Monitor regularly the water quality • Deploy WatSan Kit 5 along with trained NDRT WatSan team. • As a pilot initiative, provide of 2,000 beneficiary menstruation kit 1 and 2 (will be funded through different funding mechanism)
Appropriate sanitation, including excreta disposal, solid waste disposal, is provided	<ul style="list-style-type: none"> • Construct emergency communal latrines for 2,615 families according to sphere standards • Based on the detailed assessment, a plan for construction of household latrines will be developed. • Conduct awareness on vector control and prevention measures. • Conduct awareness on waste disposal measures.
The health status of the population is improved through behaviour change and hygiene promotion activities.	<ul style="list-style-type: none"> • Initiate a hygiene promotion campaign within the affected population focusing on behaviour change and targeting 2,615 families • Conduct two training on PHASTER for the community and volunteers in the affected branches within the next 3 months

Logistics

Outcome: The local logistics capacity of Burundi RCS to support the repatriation process is strengthened with the enhanced technical logistic support of the Federation's East Africa Regional Representation Office

Outputs (expected results):	Activities planned:
Enhanced logistics capacity and technical support facilitate the assistance to the target 2,615 households	<ul style="list-style-type: none"> • Coordinate with BRC logistics team to ensure that Federation procurement procedures are strictly adhered to • Support the delivery of relief items and other items dedicated to the operation

Beneficiary communication

Outcome: A beneficiary communication strategy will be developed to ensure that returnees understand their entitlements and are able to access services.

Outputs (expected results):	Activities planned:
Returnees will have access to information (throughout various media modes) on services available	<ul style="list-style-type: none"> • Undertake assessment and formulate a strategy for appropriate beneficiary communications • Undertake various communication activities to ensure that returnees are aware of the services available. • Monitor and evaluate the impact of various beneficiary communication strategies

Capacity of the National Society

Burundi Red Cross is organized into 2 main structures: governance and the executive. The latter is headed by an appointed Secretary General, responsible for the daily management of the National Society. The executive consists of operational programmes in Disaster Management and Assistance to vulnerable, Organizational Development, and Health Care, all assisted by programme coordination services and planning, monitoring, evaluation and reporting. There are currently 28 ongoing projects. There are additional divisions for Communications, Finance, Administration and Logistics, as well as Public Relations and Resource Mobilization.

There are 17 Branches: Ngozi, Gitega, Makamba, Kayanza, Bubanza, Muramvya, Buja-Mairie, Bujumbura Rural, Kirundo, Muyinga, Cibitoke, Bururi, Mwaro, Chankuzo, Karuzi, Rutana, Ruyigi. Each branch has a National Disaster Response Team. There are 6 Disaster Preparedness NFI warehouses countrywide, including one central stock at the HQ. Three Health Centres are currently managed by Burundi RC in 3 different Branches.

There are 176 full time staff, 350,000 RC volunteers countrywide and hundreds of First Aid Teams active in all branches. Logistical capacities include at least 1 car, 1 motorcycle, an office, a Branch coordinator and an accountant for each Branch.

Capacity of the IFRC

The IFRC East Africa regional representation, based in Nairobi supports Burundi Red Cross through additional technical support from IFRC's East Africa regional office, the Africa Zone office and the Secretariat in Geneva. Technical capacities available include disaster management, health and care, water and sanitation, finance and administration, communication and security as well as resource mobilization and planning, monitoring, evaluation and reporting (PMER).

Budget summary

See attached budget (Annex 1) for details.

Jagan Chapagain
Acting Under Secretary General
Programme Services Division

Bekele Geleta
Secretary General

Contact information

For further information specifically related to this operation please contact:

- **In Burundi Red Cross:** Katiyunguruza Anselme, Secretary General, Email: katiyunguruza.anselme@croixrouge.bi, Phone +257.21.62.46; Fax +257.21.11.01
- **IFRC Regional Representation:** Finnjarle Rode, Regional Representative for East Africa; Nairobi; phone: +254 20 283 5000; email: finnjarle.rode@ifrc.org
- **IFRC Africa Zone:** Daniel Bolaños, Disaster Management Coordinator for Africa; Nairobi; phone: +254 (0)731 067 489; email: daniel.bolanos@ifrc.org
- **IFRC Geneva:** Christine South, Operations Quality Assurance Senior Officer; phone: +41 22 730 45 29; email: christine.south@ifrc.org
- **IFRC Regional Logistics Unit (RLU):** Ari Mantyvaara Logistics Coordinator, Dubai; phone +971 50 4 584 872, Fax +971 4 883 22 12, email: ari.mantyvaara@ifrc.org

For Resource Mobilization and Pledges:

- **IFRC Africa Zone:** Loïc de Bastier, Resource Mobilization Coordinator for Africa; Addis Ababa; phone: +251 93 003 4013; fax: +251 11 557 0799; email: loic.debastier@ifrc.org

For Performance and Accountability (planning, monitoring, evaluation and reporting):

- **IFRC Africa Zone:** Robert Ondrusek, PMER/QA Delegate for Africa; Nairobi; phone: +254 731 067277; email: robert.ondrusek@ifrc.org

How we work

All IFRC assistance seeks to adhere to the Code of Conduct for the International Red Cross and Red Crescent Movement and Non-Governmental Organizations (NGO's) in Disaster Relief and the Humanitarian Charter and Minimum Standards in Disaster Response (Sphere) in delivering assistance to the most vulnerable.

The IFRC's vision is to inspire, encourage, facilitate and promote at all times all forms of humanitarian activities by National Societies, with a view to preventing and alleviating human suffering, and thereby contributing to the maintenance and promotion of human dignity and peace in the world.

www.ifrc.org
Saving lives, changing minds.



The IFRC's work is guided by Strategy 2020 which puts forward three strategic aims:

1. Save lives, protect livelihoods, and strengthen recovery from disaster and crises.
2. Enable healthy and safe living.
3. Promote social inclusion and a culture of non-violence and peace.

EMERGENCY APPEAL

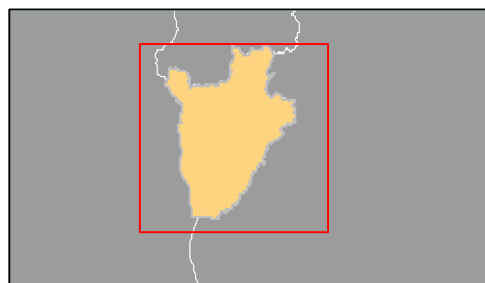
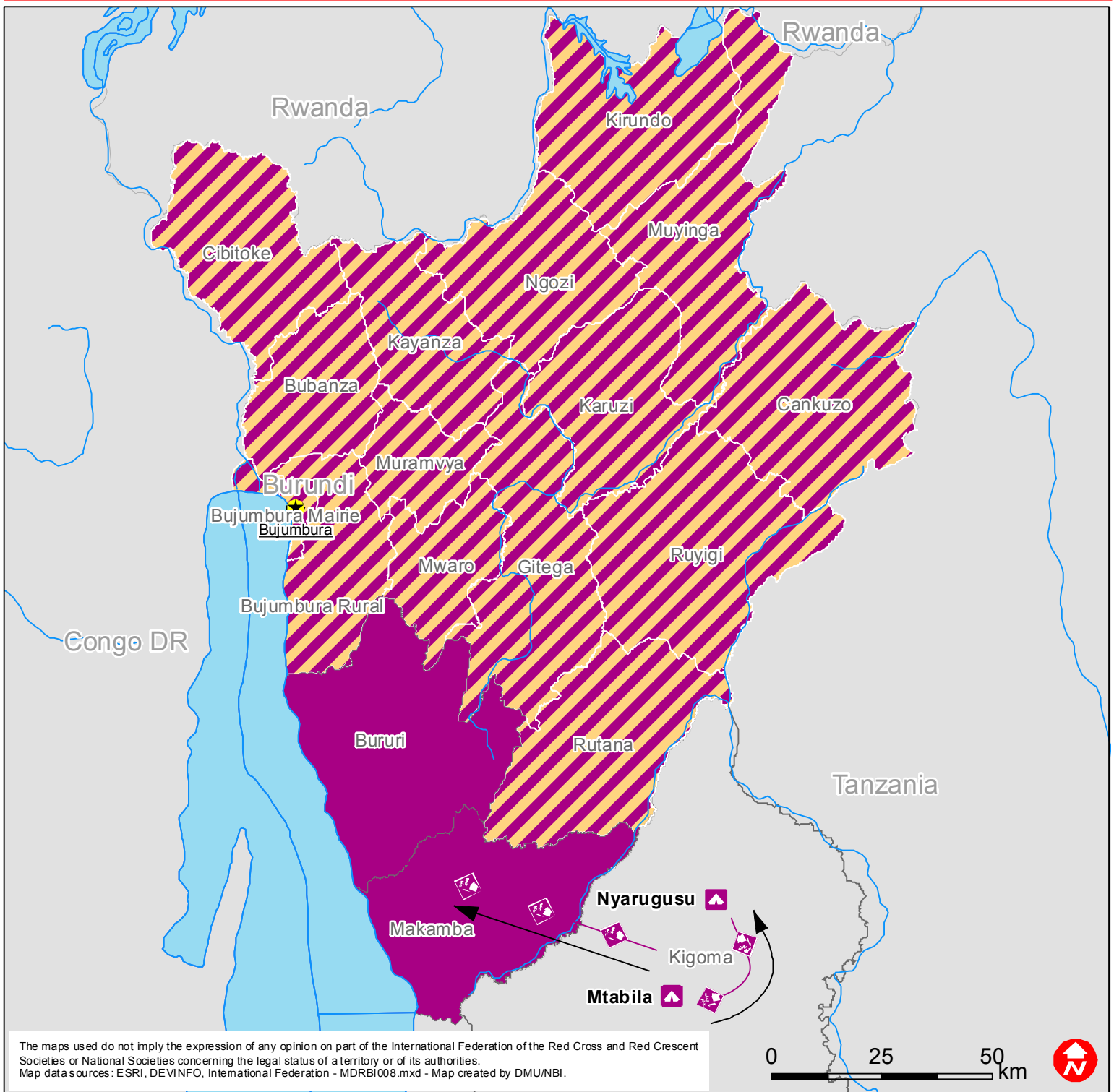
15-11-12



Burundi Population Movement (MDRBI008)

Budget Group	Multilateral Response	Inter-Agency Shelter Coord.	Bilateral Response	Appeal Budget CHF
Clothing & Textiles	0			0
Food	0			0
Water, Sanitation & Hygiene	147,900			147,900
Medical & First Aid				0
Teaching Materials				0
Utensils & Tools	313,800			313,800
Other Supplies & Services				0
Cash Disbursements	0			0
Total RELIEF ITEMS, CONSTRUCTION AND SUPPLIES	461,700	0	0	461,700
Computer & Telecom Equipment	0			0
Office/Household Furniture & Equipment	0			0
Medical Equipment				0
Other Machinery & Equipment				0
Total LAND, VEHICLES AND EQUIPMENT	0	0	0	0
Storage, Warehousing	0			0
Distribution & Monitoring	0			0
Transport & Vehicle Costs	26,800			26,800
Logistics Services				0
Total LOGISTICS, TRANSPORT AND STORAGE	26,800	0	0	26,800
International Staff	33,300			33,300
National Staff	0			0
National Society Staff	58,790			58,790
Volunteers				0
Total PERSONNEL	92,090	0	0	92,090
Consultants	10,000			10,000
Professional Fees	0			0
Total CONSULTANTS & PROFESSIONAL FEES	10,000	0	0	10,000
Workshops & Training	37,560			37,560
Total WORKSHOP & TRAINING	37,560	0	0	37,560
Travel	1,400			1,400
Information & Public Relations	0			0
Office Costs	0			0
Communications	0			0
Financial Charges	0			0
Other General Expenses	4,000			4,000
Shared Support Services				0
Total GENERAL EXPENDITURES	5,400	0	0	5,400
Partner National Societies				0
Other Partners (NGOs, UN, other)				0
Total TRANSFER TO PARTNERS	0	0	0	0
Programme and Supplementary Services Recovery	41,181	0	0	41,181
Total INDIRECT COSTS	41,181	0	0	41,181
TOTAL BUDGET	674,731	0	0	674,731
Available Resources				
Multilateral Contributions				0
Bilateral Contributions				0
TOTAL AVAILABLE RESOURCES	0	0	0	0
NET EMERGENCY APPEAL NEEDS	674,731	0	0	674,731



Burundi: Population Movement



-  Provinces supported by BRCS
-  Provinces hosting returnees