

www.ifrc.org
Saving lives,
changing minds.

Disaster relief emergency fund (DREF) Malawi: Floods

 International Federation
of Red Cross and Red Crescent Societies

DREF operation n° MDRMW007
GLIDE n° FL-2012-000017-MWI
14 February 2012

The International Federation of Red Cross and Red Crescent (IFRC) Disaster Relief Emergency Fund (DREF) is a source of un-earmarked money created by the Federation in 1985 to ensure that immediate financial support is available for Red Cross and Red Crescent emergency response. The DREF is a vital part of the International Federation's disaster response system and increases the ability of National Societies to respond to disasters.

CHF 275,993 has been allocated from the IFRC's Disaster Relief Emergency Fund (DREF) to support the National Society in delivering immediate assistance to 6,159 beneficiaries. Un-earmarked funds to repay DREF are encouraged.

Summary: Storms carrying heavy rain have hit Malawi since late December 2011, which has led to flash floods and destruction of infrastructure including houses, school blocks and others. Among the districts affected so far are Thyolo, Phalombe, Chikwawa and Nsanje in the southern region, Dedza and Salima in the central region and Nkhata Bay, Rumphi and Karonga in northern region of Malawi. As of mid-January 2012, a total of 5,270 households had been affected, according to the Government's Department of Disaster Management Affairs. Houses have been completely destroyed or partly damaged. Other households have experienced crop damage.



Using boats to evacuate people from flooded riparian lowlands/ photo MRCS

The latest heavy rains were experienced in Traditional Authority (T/A) Mlolo in Nsanje District from 22nd January 2012, where a total of 6,159 people (about 1,235 households) have been affected. These numbers are likely to increase, as assessment is still ongoing. Most of the affected households have nowhere to stay since the waters have not completely receded.

The floods have affected schools, churches and agriculture as well. Five schools have been closed and one agriculture office have been closed. Other schools are not operational due to evacuated people occupying the school buildings. The evacuated people are at Osiyana camp, Bangula ADMARC and Nsanje District Council rest house at Bangula. Additionally, there are reported cases of cholera and fears of a possible cholera outbreak, considering that water and sanitation facilities have been greatly affected.

Since December 2011, Malawi Red Cross Society (MRCS) has been responding to the affected people through provision of temporary shelter materials, including tarpaulins, using items from MRCS pre-positioned stocks.

This DREF operation will help enable MRCS to continue assisting the affected population, by addressing immediate shelter needs and reducing risks of water and sanitation related diseases among the 1,235

displaced households in T/A Mlolo through water treatment, supplies and hygiene promotion campaigns.

This operation is expected to be implemented over 3 months, and will therefore be completed by 9 May. A Final Report will be made available three months after the end of the operation (by 9 August, 2012).

[<click here for the DREF budget; here for contact details; here to view a map of the affected area>](#)

The situation

The heavy rains associated from storms in many parts of the country since late December 2011 have led to flash floods and destruction of infrastructure, including houses, school blocks and others in different districts of the country. Among the districts affected so far are Thyolo, Phalombe, Chikwawa and Nsanje in the southern region, Dedza and Salima in the central region and Nkhata Bay, Rumphu and Karonga in northern region of Malawi. A total of 5,270 households have been affected according to the Government's Department of Disaster Management Affairs as of mid-January 2012. Their houses have been completely destroyed or partly damaged, or they have experienced crop damage.

The latest heavy rains were experienced in T/A Mlolo in Nsanje District from 22nd January 2012 where a total of 6,159 people (813 men, 1,744 women and 3,602 children) have been affected and these numbers are likely to increase as assessment is still ongoing. Most of the affected households have nowhere to stay since the waters have not completely receded. The worst hit is the community from Osiyana Group Village which is under T/A Mlolo.

The floods have affected schools, churches and agriculture as well. For instance, five schools have been closed and one agriculture office have been closed. Currently, other schools are not operational because people have moved in after being evacuated. Evacuated people are also at the recently-established Osiyana transitional camp (861 households), at Nsanje District Council rest house in Bangula (54 households/ 272 people) and at the Bangula ADMARC hall (33 households/162people).

Additionally, the Nsanje District Hospital has recorded about 48 confirmed cholera case and there are fears of a possible cholera outbreak in the area considering that water and sanitation facilities have been greatly affected. Other disease epidemics, including Malaria, diarrhoea and measles cannot be avoided in this situation where people are gathered at one place. These problems are exacerbated by poor living conditions, unsafe drinking water and lack of sanitary facilities.

People trapped on an island on the Shire River are being evacuated by a helicopter and boats provided by the Malawi Defence Force. These are also being used to deliver relief materials to areas that are otherwise inaccessible at the moment. The affected people have been moved to higher ground around Bangula trading centre and are accommodated at Osiyana transitional camp, Bangula ADMARC Hall, Nsanje District Council rest house and in two schools. Conditions in such centres are not satisfactory. Those at the Council rest house are sharing rooms as group—i.e. women and men in separate rooms—which means families are no longer living as a unit. People sleeping in the ADMARC hall are mixed in terms of ages, and toilet facilities are not adequate. For instance at Osiyana transitional camp, the 861 households share 10 toilets (5 for women and 5 for men).

Mlolo area is lowland, and even when floodwaters recede, communities will still be under threat of flood. Therefore, the Government is asking local chiefs, especially from Group Village Headman (GVH) Osiyana, to relocate their people immediately to nearby higher ground, and a proposed new site which is about 2 kilometres away has been identified.

Other agencies, including UNICEF have also pledged to provide chemicals for water treatment and tents for schools. Government will provide maize flour and beans enough for two weeks.

MRCS is also providing some temporally shelter materials as part of their preliminary response. There is still a need to reach out to other equally affected households who have not been assisted to date. Required materials include: tarpaulins for reconstruction of new homes where people are to relocate; plastic sheets for use in the construction of temporary toilets, bathrooms; jerry cans; cooking utensils; and water purification tablets. In light of the urgent need for these materials, particularly for those being relocated, the current DREF operation has been launched.

Coordination and partnerships

The MRCS is working closely with the Government of Malawi through the Department of Lands, Housing and Urban Development, UN agencies, including UNICEF and others, including GOAL- Malawi. Each partner's role is well defined in the Malawi Contingency plan as members were put in various sectors/clusters. MRCS is the lead organization in the clusters of Shelter and Camp Management. It is also participating in WASH, transport, logistics and communication. MRCS is coordinating the set up of the Osiyana camp, including installation of tents supplied by other partners.

Red Cross and Red Crescent action

As mentioned, MRCS has been active in the immediate response, working hand in hand with government in the evacuation of people to higher ground, helping ensure their emergency shelter needs and in coordinating the set up of Osiyana transitional camp.

In Osiyana, MRCS provided 1,730 tarpaulins and 300 shelter kits, which have helped in the construction of temporary shelters. Each household was provided with two tarpaulins and kits were shared among households since others managed to use locally available materials. Through its volunteers, MRCS coordinated in overseeing the construction of shelters at the camp. Their coordination has proven to be smooth and effective, as no duplication of effort has been recorded.

The needs

Despite the assistance that the Red Cross and other partners have provided, preliminary assessments show that affected areas still require additional tents, plastic sheets and tarpaulins for reconstruction of new homes, as well as water purification tablets and other WASH related items to cater for the displaced families. There is also need to put up temporary learning centres for the schools that have been affected.

Malawi Red Cross Society (MRCS) has been responding to the affected people through provision of temporary shelter like tarpaulins since December 2011. The items that were being used were the ones that MRCS kept as pre-position stocks.

The capacity of MRCS has so far been overwhelmed. It should be noted that the operational budget has taken into consideration non-food items (NFI) that are in short supply. For instance, regarding shelter, MRCS has shelter kits in stock, some tarpaulins and those requested will supplement the already available stocks so that during the execution of the operation all items should be available to make sure that the Sphere standards are met. The operational budget has also taken into consideration that some of the building materials like poles will be sourced locally for framing and hence the provision of plastic sheeting and tarpaulins will complement that.

There is also a great need for provision of WASH supplies to the affected population considering the threat of cholera. The operation therefore intends to provide 1,235 diarrhoea/cholera kits—one for each affected household. Each kit will have chlorine sachet/water markers, 10 soap tablets, gloves, plastic bucket, plastic cups and calibrated jugs. Hygiene promotion and sanitation activities will also be conducted through volunteers and government health workers.

The proposed operation

MRCS is intending to support the provision of temporary shelter to those affected that meet shelter needs criteria. Temporary shelter will include provision of shelter kit materials from the National Society contingency stocks, roofing materials (for households with only roofs blown off) as well as basic household cooking utensils. In light of plans to relocate at risk populations (particularly GVH Osiyana) it is clear that the people will need temporary shelter materials and it is in this regard that MRCS is proposing this operation to cater for shelter, WASH needs and coordination for this relocation. The operation will also provide tents for use as temporary classrooms for schools where learning has been significantly disrupted.

The other communities will obviously go back once the waters have completely receded and currently there are water, sanitation and hygiene concerns following the flooding. The Nsanje District Hospital has recorded about 48 confirmed cholera cases in the area and there are fears that if nothing is done regarding WASH issues, the situation might get out of hand. Currently other stakeholders like UNICEF and GOAL Malawi

have provided plastic san plats and sheets for construction of temporary latrines. However, little has been done on water supply, treatment and hygiene promotion activities, suggesting areas where MRCS can assist.

Emergency shelter and non-food items

Outcome: The immediate shelter needs of 1,235 displaced households in T/A Mlolo are met

Outputs (expected results):

1. Emergency shelter assistance is provided to the target population
2. Essential household items/NFI are provided to the target population
3. Emergency school shelter are provided to the target communities

Planned activities

- Detailed assessment on house damage and report on shelter options
- Refresher training for the staff members and participating volunteers on shelter construction and relief distributions.
- Conduct registration of beneficiaries using agreed criteria that fits with government standards.
- Verification of beneficiaries using shelter needs criteria
- Purchase shelter and household items that can be sourced within the country
- Emergency Shelter construction training to affected communities as part of relief distributions
- Distribution of relief items
- Conduct Post Distribution Monitoring (PDM) using the PDM tools
- Monitor relief activities and report on relief distributions
- Conduct a lesson learned workshop and develop an exit strategy.

Water, sanitation, and hygiene promotion

Outcome:

Reduce the occurrence of water and sanitation related diseases among 1,235 displaced households through water treatment, supplies and hygiene promotion campaigns in Traditional Authority Mlolo for 3 months

Outputs (expected results):

1. Volunteers and government counterparts are prepared for Water, sanitation, and hygiene promotion activities
2. Displaced families are made aware of good sanitation and hygiene practices
3. Health staff are better equipped to prevent a cholera outbreak
4. Access to safe water is improved

Planned activities:

- Conduct hygiene orientation sessions for 100 volunteers and 20 government staff
- Awareness campaigns on use of water treatment drugs to reach 6,159 people.
- Procurement of critical diarrhoea/cholera kit (treatment supplies like chlorine, disposable aprons and gum boots)
- Repair and maintenance of broken boreholes
- Promotion of hygiene and sanitation activities through volunteers and government health workers.
- Conduct training/information programmes for 100 Red Cross volunteers and beneficiaries and 15 Government Health Staff in hygiene promotion and the safe use of Water Treatment Products (e.g. chlorination tablets).
- Assess the existing coverage with a view of ensuring availability of an adequate water supply and sanitation facilities.

Contact information

For further information specifically related to this operation please contact:

- **Malawi Red Cross Society:** Ethel Kaimila, Secretary General, Email: ethelkaimila@malawiredcross.org
Phone: +265 999 949 084; Fax:
- **IFRC Southern Africa Region:** Lorraine Magwiro, Acting Regional Representative; phone: +27113039700; lorraine.magwiro@ifrc.org;
- **IFRC Southern Africa Region:** Stanley Ndhlovu, Regional Disaster Management Coordinator; phone: +27834400564; email: stanley.ndhlovu@ifrc.org;
- **IFRC Zone:** Daniel Bolanos, Disaster Management Coordinator, Africa; phone: +254 (0)731 067 489; email: daniel.bolanos@ifrc.org

For Performance and Accountability (planning, monitoring, evaluation and reporting):

- **IFRC Zone:** Robert Ondrusek, PMER/QA Delegate, Africa phone: +254 731 067277; email: robert.ondrusek@ifrc.org



Click here

1. DREF budget **below**
2. Click **here** to return to the title page

How we work

All IFRC assistance seeks to adhere to the Code of Conduct for the International Red Cross and Red Crescent Movement and Non-Governmental Organizations (NGOs) in Disaster Relief and the Humanitarian Charter and Minimum Standards in Humanitarian Response (Sphere) in delivering assistance to the most vulnerable.

The IFRC's vision is to inspire, encourage, facilitate and promote at all times all forms of humanitarian activities by National Societies, with a view to preventing and alleviating human suffering, and thereby contributing to the maintenance and promotion of human dignity and peace in the world.

www.ifrc.org
Saving lives, changing minds.



The IFRC's work is guided by Strategy 2020 which puts forward three strategic aims:

1. Save lives, protect livelihoods, and strengthen recovery from disaster and crises.
 2. Enable healthy and safe living.
 3. Promote social inclusion and a culture of non-violence and peace.
-

DREF OPERATION

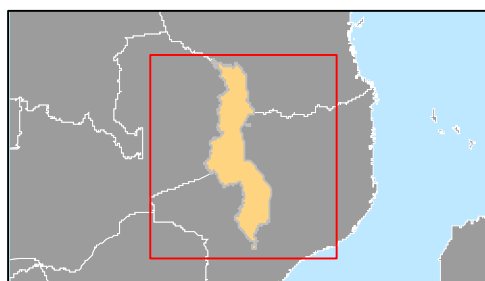
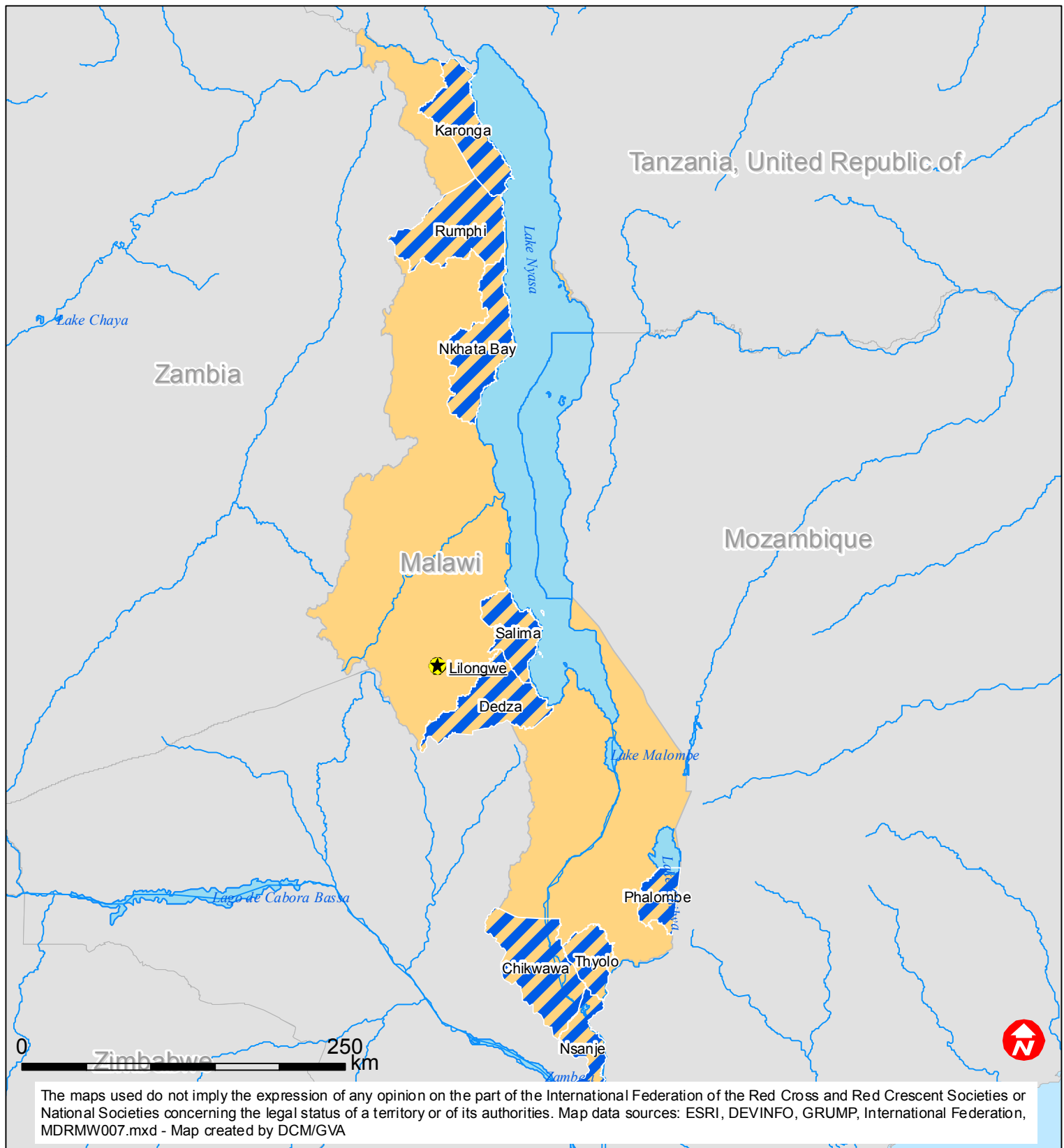
14-02-12


Malawi: Floods (MDRMW007)

Budget Group	DREF Grant Budget CHF
Shelter - Relief	57,660
Shelter - Transitional	0
Construction - Housing	0
Construction - Facilities	0
Construction - Materials	0
Clothing & Textiles	60,341
Food	0
Seeds & Plants	0
Water, Sanitation & Hygiene	15,000
Medical & First Aid	9,263
Teaching Materials	0
Utensils & Tools	27,170
Other Supplies & Services	0
Emergency Response Units	0
Cash Disbursements	0
Total RELIEF ITEMS, CONSTRUCTION AND SUPPLIES	169,434
Land & Buildings	0
Vehicles Purchase	0
Computer & Telecom Equipment	0
Office/Household Furniture & Equipment	0
Medical Equipment	0
Other Machinery & Equipment	0
Total LAND, VEHICLES AND EQUIPMENT	0
Storage, Warehousing	469
Distribution & Monitoring	1,938
Transport & Vehicle Costs	31,040
Logistics Services	0
Total LOGISTICS, TRANSPORT AND STORAGE	33,446
International Staff	0
Regionally Deployed Staff	0
National Staff	0
National Society Staff	13,124
Volunteers	2,700
Total PERSONNEL	15,824
Consultants	0
Professional Fees	0
Total CONSULTANTS & PROFESSIONAL FEES	0
Workshops & Training	16,125
Total WORKSHOP & TRAINING	16,125
Travel	5,000
Information & Public Relations	13,500
Office Costs	1,950
Communications	3,119
Financial Charges	750
Other General Expenses	0
Shared Support Services	0
Total GENERAL EXPENDITURES	24,319
Programme and Supplementary Services Recovery	16,845
Total INDIRECT COSTS	16,845
TOTAL BUDGET	275,993



Malawi: Floods



 Worst affected areas