

www.ifrc.org
Saving lives,
changing minds.

Disaster relief emergency fund (DREF) Pakistan: Earthquake in Balochistan

 International Federation
of Red Cross and Red Crescent Societies

DREF operation n° MDRPK009
GLIDE n° [EQ-2013-000121-PAK](#)
30 September 2013

The International Federation of Red Cross and Red Crescent (IFRC) Disaster Relief Emergency Fund (DREF) is a source of un-earmarked money created by the Federation in 1985 to ensure that immediate financial support is available for Red Cross and Red Crescent emergency response. The DREF is a vital part of the International Federation's disaster response system and increases the ability of National Societies to respond to disasters.

CHF 154,425 has been allocated from the IFRC's Disaster Relief Emergency Fund (DREF) to support the National Society in delivering immediate assistance to 7,000 beneficiaries. Unearmarked funds to replenish DREF are encouraged.

Summary:

An earthquake of 7.7-magnitude hit the southwestern region of Pakistan on Tuesday 24 September 2013 at 16:29hr Pakistan Standard Time (PST) with a focal depth of 10 kilometres (kms) affecting approximately 300,000 people.



A health officer with the Pakistan Red Crescent Society attends to a young patient at the Awaran District Hospital, in response to the Balochistan earthquake. **Photo:** PRCS.

Pakistan Red Crescent Society (PRCS) is on the ground to conduct initial assessment and provide emergency health support. IFRC, in supporting PRCS, is closely monitoring the situation and coordinating with the International Committee of Red Cross (ICRC) and other PNSs present in the country to ensure resources and support services are available when required.

This DREF operation will support PRCS relief operations to deliver immediate assistance with the provision of emergency health services and distributions of food packets, non-food items (NFIs) and emergency shelter supplies, . The NFIs and shelter supplies are being provided out of existing PRCS pre-positioned stocks. The DREF will cover transport and distribution costs of these items but not the costs of replenishing these stocks.

This operation is expected to be implemented over three months, and will therefore be completed by December 2013; a Final Report will be made available three months after the end of the operation (by March 2014).

[<click here for the DREF budget; here for contact details; here to view the map of the affected area>](#)

The situation

A 7.7-magnitude¹ earthquake hit the southwestern region of Pakistan on Tuesday 24 September 2013 at 16:29hr Pakistan Standard Time (PST) with a focal depth of 10 kilometres (kms). At least 15 aftershocks have been reported with a magnitude up to 5.7 at 17:45hr PST on the same day. The epicenter lies in a thinly populated mountainous area of Balochistan province (approximately 5 persons per square km), 66 kms north-east from Awaran district capital, with tremors felt in neighboring Sindh province, but also as far as India, Iran, UAE and Oman. The six affected districts in Balochistan province included Kech (also known as Turbat), Panjgor, Chagi, Khuzdar, Gawadar and Awaran. Awaran district has been most severely impacted with all three Tehsils of Awaran, Mashkay and Jhaho affected.

The Provincial Disaster Management Authority (PDMA) of Balochistan on 26 September at 11:31hr PST has reported 355 people dead and another 619 people injured (from Awaran and Kech districts).² Although the extent of the damages and losses are yet to be confirmed, the latest information indicates that approximately 21,000 houses (mostly of mud-brick construction) have been destroyed or damaged, and 300,000 people affected. The figure is likely to rise when more information is available. It was estimated that around 300,00 people are living within 100 km radius of the epicenter of the earthquake. The affected population are extremely scattered over a large geographical area (more than 21,000 sq. km). Many affected population are already living without shelter under temperature reaching 40-42 degree Celcius during the day and changing weather condition as winter is approaching. The in-country Shelter Cluster is in the discussion on possible mobilization of stocks available in country, including winterized items which will be needed in the coming months.

The remoteness along with security concerns in the area is likely to slow the ability to gather accurate and comprehensive damage assessment information. There have been two rocket attack incidents in the past two days targeting a helicopter with the National Disaster Management Authority (NDMA) chairman visiting Maskay Tehsil (Awaran), and another a medical team travelling by road to Awaran. No casualty was reported in both incidents; however this heightened the security concern for any humanitarian response in the affected areas.³

Coordination and partnerships

The Pakistan Army forces and law enforcement agencies are conducting search and rescue efforts with the assistance of helicopters to reach the hilly and difficult to access areas, as well as providing relief and mobilizing medical teams and medicines. Affected population with serious injuries is being transported to Karachi and neighboring districts by helicopter.

In response to the immediate needs of the affected population, PDMA, the National Disaster Management Authority (NDMA) and the armed forces have dispatched non-food items (NFIs) and food items to Awaran district primarily⁴.

Table 1: Summary of relief distribution as of 26 September 2013⁴

	PDMA	NDMA	Army	Total
Tent	3,910	5,000	90	9,000
Food Packet	4,060	7,000	1,212	12,272
Blanket	300	5,000	0	5,300
Plastic Mat	1,700	0	0	1,700
Mosquito Net	300	0	300	600
Jerry Can	300	0	0	300
Water Bottle	0	0	3,900	3,900

The Government health department has mobilized support services comprising of:

- One Mobile Health Unit (MHU)
- One truck of medicines from Quetta.
- Three truck of medicines from PDMA Sindh.
- 26 doctors and 16 paramedical staff with eight ambulances from provincial health department.
- Five doctors with two ambulances from Kech to Hoshab (Dandar)

¹ Richter magnitude scale

² <http://www.pdma.gov.pk/wp-content/publication/Earthquake2013/Updates25sep3.pdf> and <http://www.ndma.gov.pk/Ex/Documents/26-9-2013Situationreport.pdf>

³ <http://abcnews.go.com/International/wireStory/pakistan-struggles-quake-victims-271-dead-20367620>

⁴ <http://www.pdma.gov.pk/wp-content/publication/Earthquake2013/Updates25sep3.pdf> and <http://www.ndma.gov.pk/Ex/Documents/26-9-2013Situationreport.pdf>

- One light field hospital
- Five emergency health kits (each kit serves up to 1,000 people) and 100 trauma kits.

In addition, one medical team equipped with medicines from the Pakistan Army forces and 18 ambulances from the Edhi Foundation are engaged in health relief activities.

Other humanitarian actors continue to monitor developments and stand ready to support the Government's efforts to assist earthquake affected population if needed. The World Health Organization (WHO) has provided kits for the delivery of emergency primary health care services for 100,000 people, and the World Food Programme (WFP) has arranged for the delivery of high energy biscuits⁵.

The Government of Pakistan has not requested for international assistance at this stage.

Red Cross and Red Crescent action

The Pakistan Red Crescent Society (PRCS) assessment team deployed from Lasbella DM Cell has reached Awaran and has been assisting the medical team (two doctors and four paramedics) that arrived on the morning of 26 September from Karachi via helicopter to establish operations. Initial rapid assessments demonstrate a need for food items, emergency shelter, NFIs, and health care along with medications. Three additional PRCS assessment and support teams have been deployed and are currently en route to Awaran from the neighbouring DM Cells of Kharan and Gwadar (approximately eight hours travel time by road), and from the provincial headquarters in Quetta. The two additional PRCS health teams have been deployed for deployment from Quetta to join teams in Awaran. Information gathered from the assessment is limited due to the security situation and the lack of internet or communication access from the affected areas; however secondary information is received from the Pakistan Army forces.

PRCS has NFIs from its disaster preparedness (DP) stock in country on standby to assist approximately 30,000 families. PRCS warehouses located in Karachi of Sindh province and Quetta of Balochistan can provide NFI stocks for approx. 9,000 families and 4,700 families, respectively. Quetta of Balochistan province takes approximately 20 hours road travel to cover the 654 kms to Awaran, whilst it takes about eight hours to travel the 323 kms from Karachi of Sindh province. Six of the 37 Disaster Management (DM) Cells established to respond to emergencies are located in Balochistan province, with both Lasbella DM Cell and Gawadar DM Cell able to provide NFI stocks for 200 families. All these prepositioned stocks are available for rapid distribution by PRCS once immediate needs are confirmed.



PRCS staff mobilizing medicines to the affected area via helicopter. **Photo:** PRCS.

PRCS is in the process of transferring funds to the Baluchistan and Sindh Provincial Branches for immediate operating costs from emergency funds and is making initial arrangements for the dispatch and distribution of 1,000 NFI kits and 1,000 food parcels to assist approximately 7,000 affected people in Awaran district. PRCS has also dispatched two trucks equipped with medicines from Karachi to Awaran.

To support the response operation, the Balochistan branch of PRCS will draw on its roster of 37 Provincial Branch Disaster Response Team (BDRT) members, and 52 District Disaster Response Team (DDRT) members. Furthermore 115 National Disaster Response Team (NDRT) members are on standby for deployment. Additionally PRCS has an extensive pool of volunteers within the province of which 553 are ready to support relief activities. PRCS has 21 water treatment units ready to be deployed to different locations in the country. Six units are stored in Karachi and four units in Quetta.

PRCS Sindh Provincial Branch has activated its Emergency Control Room since the onset of earthquake and is still in operation. The branch has also deployed assessment teams to the five districts bordering with Balochistan (Dadu, Badin, KSK, Jacobabad and Shikarpur) where minor quakes and tremors were also felt. No significant damage has been reported from these districts.

⁵ <http://www.unocha.org/pakistan>

The remoteness of the earthquake affected areas, coupled with a complex working environment due to a long-standing insurgency involving different separatist groups result in serious security concerns. This limits access to the area, and is likely to pose challenges in gathering accurate and comprehensive damage assessment information rapidly. The International Federation of Red Cross and Red Crescent Society (IFRC) and Partner National Societies (PNSs) under the shared security umbrella are currently unable to travel to this area given its 'Red Security Zone' status⁶. The PRCS is mobilizing its resources and leading the provision of Movement assistance in the affected areas.

PRCS national headquarters and branches are in close coordination with the local authorities and district, provincial and national disaster management authorities and continue to assess the situation and possible support needs.

IFRC, in supporting PRCS, is closely monitoring the situation and coordinating with the International Committee of Red Cross (ICRC) and other PNSs present in the country to ensure resources and support services are available when required. The first Red Cross Red Crescent Movement coordination meeting was held on 26 September at the PRCS national headquarters.

The needs

As per PRCS Branch and PDMA sources, the most urgent needs are food, shelter, health care and essential household items. In accordance with the PRCS Contingency Planning guidelines, trained teams in disaster relief have been deployed to the area to conduct rapid needs assessments. Beneficiary selection for earthquake assistance follows the principles of assisting the most vulnerable and coordinating assistance provided by other responders in the area in order to avoid duplications and complement efforts..

The proposed operation

The operation will deliver immediate assistance in providing food packets, non-food relief items, emergency shelter supplies and emergency health services. The food packets will be procured locally while the non-food relief items and shelter supplies are being provided out of existing PRCS pre-positioned stocks.

Relief distributions (food and basic non-food items)
<p>Outcome: The basic food and essential household needs of 1,000 earthquake affected families (approx. 7,000 people) are met in the affected districts (Awaran, Kech/Turbat) of Balochistan province.</p>
<p>Output: 1,000 earthquake affected families (approx. 7,000 people) have received basic food assistance.</p> <p>Activities planned:</p> <ul style="list-style-type: none"> • Conduct rapid emergency needs assessment. • Selection and verification of 1,000 families with community participation in planning and distribution process. • Procurement, warehousing, and transportation of 1,000 food parcels⁷ at distribution sites according to distribution plan. • Provide assistance to 1,000 families through distribution of food parcels. • Establish a beneficiary feedback and monitoring system for the continuous improvement of the delivery system. • Monitor and evaluate the relief activities and provide reporting on the distributions.
<p>Output: 1,000 earthquake affected families (approx. 7,000 people) have been assisted with emergency shelter and essential household items which will be deployed from PRCS pre-positioned stock.</p> <p>Activities planned:</p> <ul style="list-style-type: none"> • Conduct rapid emergency needs assessment. • Selection and verification of 1,000 families with community participation in planning and distribution

⁶ The Movement Security Framework

⁷ Each food parcel includes 20kg of wheat flour, 15kg of rice, 6kg of split chickpea pulse, 6kg of pink lentils, 1kg of salt, 1kg of tea, 7kg of sugar and 5kg of ghee.

process.

- Mobilization of existing DP stocks from PRCS warehouse, to distribution sites according to distribution plan.
- Provide assistance to 1.000 families through distribution of emergency shelter⁸ and essential household items⁹.
- Establish a beneficiary feedback and monitoring system for the continuous improvement of the delivery system.
- Monitor and evaluate the relief activities and provide reporting on the distributions.

Emergency health

Outcome: Immediate health risks of the earthquake affected population are reduced.

Outputs: Basic curative and preventive health services are provided through mobile medical services.

Activities planned:

- Conduct rapid health assessments and monitor evolving situation
- Deploy to and operate mobile medical units in severely affected but underserved areas
- Refer severe/critical cases to appropriate health facilities
- Coordinate with district health department/authorities and health partners

Logistics

Logistics support will be provided following IFRC procedures to source and procure relief items needed, and to ensure the efficient and timely delivery of these items for the success of the operation. NFIs are being supplied by pre-positioned stock from the PRCS and will be replenished following IFRC procurement procedures, although this DREF is not funding the replenishment. In regards to food items, a joint committee for food procurement between IFRC and PRCS had been established as an agreed preparedness measure in order to shorten the time for procurement and delivery. The procurement of food items will follow these preparedness measures within the PRCS and IFRC framework.

⁸ The emergency shelter assistance includes tents, tarpaulins and shelter repair kit

⁹ The essential household items include kitchen set, hygiene kit, cooking stove, hurricane lamps, blankets, mosquito net

Contact information

For further information specifically related to this operation please contact:

Pakistan Red Crescent Society:

- Mahboob Sardar, Secretary General, phone: +92 51 925 0407; email: mahboob@prcs.org.pk
- Muhammad Ateeb Siddiqui, Assistant Secretary General, phone +92 51 925 0487; email: ateeb.nhq@prcs.org.pk

IFRC Country Office, Islamabad:

- Michael Higginson, Acting Head of Delegation, phone: +92(0)51 925 0416/17; email: michael.higginson@ifrc.org

IFRC South Asia regional office:

- Simon Missiri, Head of Regional Office, phone: +91 11 26154021 to 24, fax: +91 11 26154025; email: simon.missiri@ifrc.org

IFRC Asia Pacific zone office:

- Al Panico, Head of Operations, phone: + 603 9207 5700; email: al.panico@ifrc.org
 - Karen Poon, Operations Coordinator, phone: +603 9207 5798, mobile: +6013 360 0366; email: karen.poon@ifrc.org
 - Florent Chané, Zone Logistics Coordinator; email: florent.chane@ifrc.org
 - Martine Zoethoutmaar, Relationship Manager; email: martine.zoethoutmaar@ifrc.org
 - Abaid Ullah Khan, DMU Surge Support Officer, mobile: +6012 230 8695; email: ubaidullah84@hotmail.com
- Please send all pledges for funding to zonerm.asiapacific@ifrc.org



[Click here](#)

1. **[here](#)** to DREF budget *and map below*
 2. **[here](#)** to return to the title page
-

How we work

All IFRC assistance seeks to adhere to the [Code of Conduct for the International Red Cross and Red Crescent Movement and Non-Governmental Organizations \(NGOs\) in Disaster Relief](#) and the [Humanitarian Charter and Minimum Standards in Disaster Response \(Sphere\)](#) in delivering assistance to the most vulnerable.

The IFRC's vision is to inspire, encourage, facilitate and promote at all times all forms of humanitarian activities by National Societies, with a view to preventing and alleviating human suffering, and thereby contributing to the maintenance and promotion of human dignity and peace in the world.

www.ifrc.org
Saving lives, changing minds.



The IFRC's work is guided by Strategy 2020 which puts forward three strategic aims:

1. Save lives, protect livelihoods, and strengthen recovery from disaster and crises.
 2. Enable healthy and safe living.
 3. Promote social inclusion and a culture of non-violence and peace.
-

DREF OPERATION

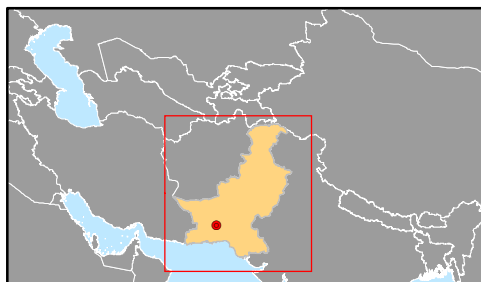
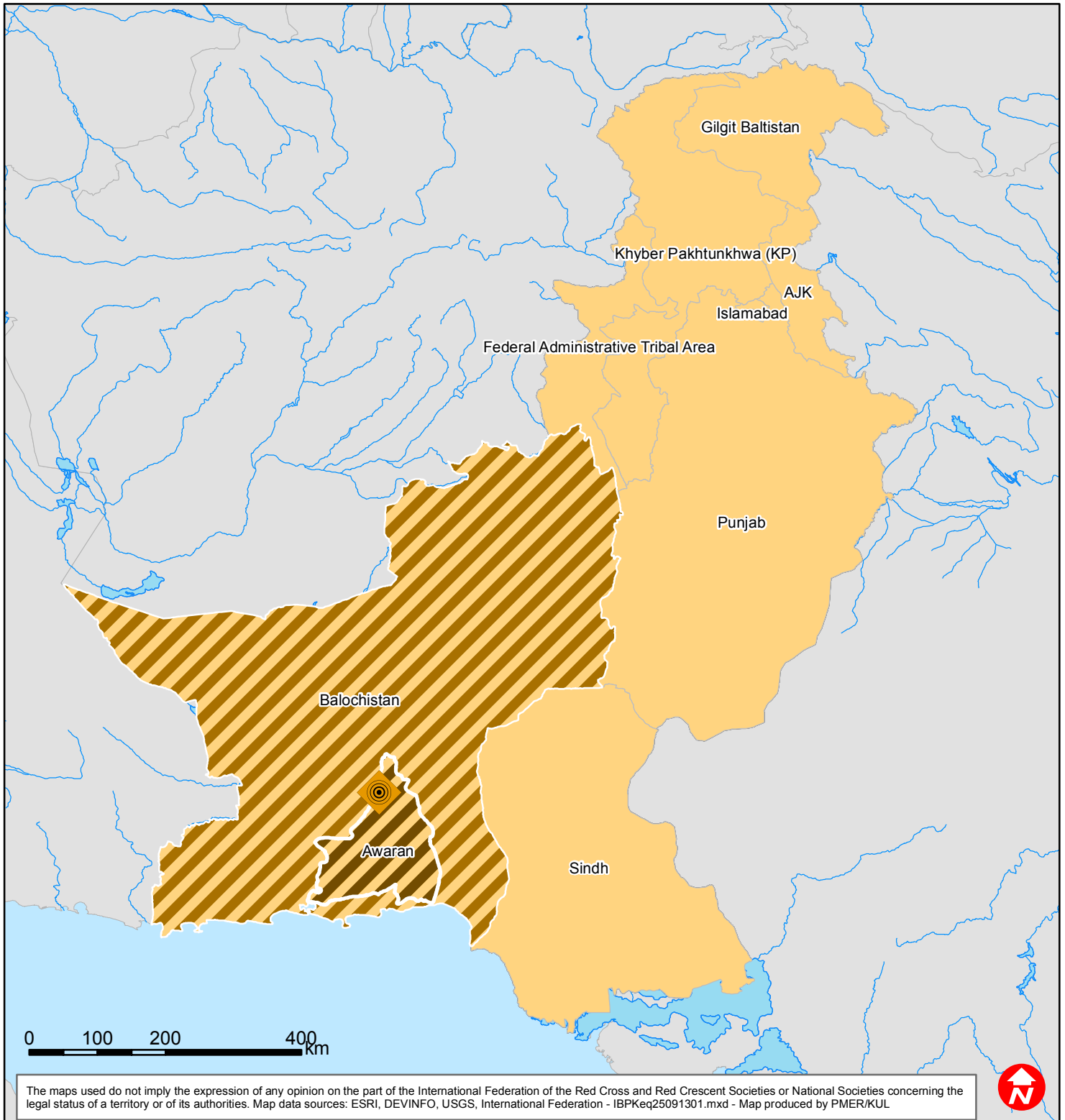
30/09/2013

MDRPK009 Pakistan: Earthquake in Balochistan

Budget Group	DREF Grant Budget CHF
Food	47,000
Medical & First Aid	10,000
Total RELIEF ITEMS, CONSTRUCTION AND SUPPLIES	57,000
Dsitribution & Monitoring	20,000
Transport & Vehicle Costs	49,000
Logistics Services	3,000
Total LOGISTICS, TRANSPORT AND STORAGE	72,000
National Staff	8,000
Volunteers	5,000
Total PERSONNEL	13,000
Communications	3,000
Total GENERAL EXPENDITURES	3,000
Programme and Supplementary Services Recovery	9,425
Total INDIRECT COSTS	9,425
TOTAL BUDGET	154,425



Pakistan: Earthquake 2013



 7.7 Magnitude Earthquake

 Affected area

 Affected province