

EMERGENCY APPEAL



International Federation of Red Cross and Red Crescent Societies
Fédération Internationale des Sociétés de la Croix-Rouge et du Croissant-Rouge
Federación Internacional de Sociedades de la Cruz Roja y de la Media Luna Roja
الاتحاد الدولي لجمعيات الصليب الأحمر والهلال الأحمر

CHAD: SUDANESE REFUGEES

Appeal no. 23/2003

Revised

27 July 2004

The Federation's mission is to improve the lives of vulnerable people by mobilizing the power of humanity. It is the world's largest humanitarian organization and its millions of volunteers are active in over 181 countries.

In Brief

THIS REVISION OF EMERGENCY APPEAL NO. 23/2003 SEEKS A TOTAL OF CHF 14,215,000 (USD 11,241,600 OR EUR 9,297,000) IN CASH, KIND, OR SERVICES TO ASSIST 80,000 BENEFICIARIES FOR FIVE MONTHS (UNTIL 31 DECEMBER 2004)

[\(Click here to go directly to the attached Revised Appeal budget\)](#)

Appeal history:

- Emergency Appeal 23/2003¹ launched on 2 December 2003 for CHF 2,303,000 (USD 1,779,508 or EUR 1,448,063) for six months to assist 65,000 beneficiaries.
- Operations Update no. 1 dated 29 January 2004² was issued.
- Operations Update no. 2 dated 4 May 2004³ extended the operating timeframe seven months until 31 December 2004.
- Operations Update no. 3 dated 25 June 2004⁴ revised the Appeal budget to CHF 3,968,000 and confirmed the timeframe extension until 31 December 2004.
- This Emergency Appeal Revision amends the Appeal budget to CHF 14,215,000, increases the number of beneficiaries to 80,000, and confirms the operating timeframe until 31 December 2004.
- Disaster Relief Emergency Funds (DREF) allocated: CHF 160,000.

For further information specifically related to this operation please contact:

- In Chad: Andreas Doumo Gopina, Secretary General, Red Cross of Chad, N'Djamena; Email crftchad@internet.td; Phone 235.52.34.34
- In Chad: Roger Aubé, Federation Refugee Operation Coordinator, N'Djamena; Email ifrcd03@ifrc.org; Phone 235.23.42.76
- In Cameroon: Daniel Sayi, Federation Acting Head of Central Africa Sub-Regional Office, Yaoundé; Email ifrcm06@ifrc.org; Phone 237.221.74.37; Fax 237.221.74.39
- In Geneva: Mark Willis, Federation Regional Officer for West and Central Africa, Africa Dept.; Email mark.willis@ifrc.org; Phone 41.22.730.42.60; Mobile 41.79.406.19.53; Fax 41.22.733.03.95

¹ Emergency Appeal - http://www.ifrc.org/cgi/pdf_appeals.pl?03/2303.pdf

² Operations Update no. 1 - http://www.ifrc.org/cgi/pdf_appeals.pl?03/230301.pdf

³ Operations Update no. 2 - http://www.ifrc.org/cgi/pdf_appeals.pl?03/230302.pdf

⁴ Operations Update no. 3 - http://www.ifrc.org/cgi/pdf_appeals.pl?03/230303.pdf

All International Federation assistance seeks to adhere to the Code of Conduct⁵ and is committed to the Humanitarian Charter and Minimum Standards in Disaster Response⁶ in delivering assistance to the most vulnerable. For support to or for further information concerning Federation programmes or operations in this or other countries, or for a full description of the national society profile, please access the Federation's website at <http://www.ifrc.org>

For longer-term programmes, please refer to the Federation's Annual Appeal for Chad no. 01.42/2004.⁷

Background

Severe armed conflict erupted in the Darfur region of western Sudan in early 2003. The armed conflict had the immediate effect of displacing thousands of people: the vast majority internally displaced, but many thousands have fled into neighbouring Chad. Indeed, some refugees have been on the border more than a year, without adequate humanitarian assistance; their health and living conditions are rapidly deteriorating.

In December 2003, UNHCR and the Government of Chad estimated the number of refugees at 65,000 persons. It was at this time the Federation and the Red Cross of Chad⁸ launched Emergency Appeal no. 23/2003, seeking to provide aid and assistance to the refugees in the eastern zone of Chad. A later evaluation by UNHCR resulted in revised figures of 110,000; as a consequence, the Federation Appeal was extended until the end of 2004, and the budget revised. (Please refer to Operations Update no. 3). This Appeal supported refugees in eastern and north-central Chad with the provision of non-food items. The Transport Support Package (TSP) is supporting the UNHCR effort to relocate refugees; as well, TSP is transporting non-food items and approximately 80,000 litres of water per day to the camps. Five Federation delegates have assisted the Red Cross of Chad to implement this operation over the past six months.

The situation

More recent assessments have estimated the total refugee population in eastern Chad at 195,000 - 200,000; of these, 130,000 are staying in nine refugee camps. (See annexed map supplied by UNHCR). Women and children represent approximately 80% of the refugee population. It is also estimated that as many as 1 million persons are internally-displaced (IDP) in Darfur and neighbouring regions of Sudan. The recent influx of refugees in Chad has moderated; however, this situation may change.

A Federation FACT⁹ was deployed on 21 June to assess the current situation of the refugees in Chad, to assess the ongoing operation in view of scaling up activities, and to identify areas of emergency interventions as well as longer-term support. The FACT proposed a preliminary emergency Plan of Action on June 28 and continued assessments for longer term needs at the same time. The FACT completed its mission on 11 July, and recently issued its Mission Report with Plan of Action and estimated budget; this Plan of Action is the basis for this Revised Emergency Appeal.

Ongoing cross-border attacks in eastern Chad prompted UNHCR to respond by relocating refugees from this dangerous border area to established refugee camps established a safe distance inland; this activity began mid-January and benefits from the Transport Support Package (TSP) managed by Red Cross of Chad and the Federation.

UNHCR plans to finalize relocations of the remaining refugees from the border to camps in the central region by mid-August 2004, in anticipation of the heaviest part of the rainy season. The latest camp to receive refugees in the central region is Tréjine camp, 85-90 km from the border. It is this camp that the Red Cross of Chad and the Federation will establish and manage.

⁵ Code of Conduct - <http://www.ifrc.org/publicat/conduct/>

⁶ Humanitarian Charter - <http://www.sphereproject.org/>

⁷ Annual Appeal - http://www.ifrc.org/cgi/pdf_appeals.pl?annual04/014204.pdf

⁸ Red Cross of Chad - <http://www.ifrc.org/where/country/check.asp?countryid=45>

⁹ FACT – Field Assessment and Coordination Team- <http://www.ifrc.org/what/disasters/fact>

Chad: Sudanese Refugees; Appeal no. 23/2003; Appeal Revision

As described below, the situation is evolving at a rapid pace: the numbers of refugees is far greater than originally anticipated, the time constraints vis-à-vis the pending rainy season are pressing, and coordination between the various agencies has improved. It is in light of these radical changes in the refugee situation in Chad that have led to this current Emergency Appeal being revised at this stage.

The needs

In addressing the most viable and compelling needs in this refugee operation, the Red Cross of Chad and the Federation developed their overall strategy.

It is quite clear that the situation in Darfur Sudan will not be resolved in the short term; the humanitarian needs in both eastern Chad and western Sudan will remain serious through the greater part of 2005. It is also clear that the situation in Chad is now quite urgent and by the arrival of the rainy season will cause further difficulties, complicating efforts to respond and adding huge constraints as relates to logistics and transport.

In the short term, the International Red Cross and Red Crescent Movement must react immediately in terms of reinforcing the capacity of both the Red Cross of Chad and the Federation Delegation. We must also react quickly to mobilize the needed resources, material, human, and financial to meet the needs of the growing refugee population.

In the longer term, it is clear that the refugees will have care and maintenance needs for at least the next year. Despite substantial and positive experience in various interventions, the Red Cross of Chad would still need to augment its capacity in order to be able to handle an operation of this magnitude.

The proposed interventions proposed must be well-planned to ensure enhancing the capacity in a planned and sustainable manner. In addition to supporting the refugees, it is essential that the Red Cross of Chad emerge from this operation as a stronger and well-functioning national society ready to address the problems facing the country, themselves quite large before this current crisis.

To that end the Red Cross of Chad, with the support of the Federation, proposes to open and operate the refugee camp in Tréjine for upwards of 20,000 refugees, with contingency planning for an additional 20,000. Incorporated in this plan will be training of existing staff, reinforcing their human resources both in quantity and quality, and expanding their presence among the local community in eastern Chad and across the country.

While the current Emergency Appeal runs through the end of 2004, it is envisaged that this operation - refugee support and the National Society organizational development – will require continued, strong support throughout 2005. To this end, the Annual Appeal for Chad for 2005 will include specific objectives and activities related to refugee support and the strategic development of the Red Cross of Chad for the coming three years.

Immediate needs:

1. Refugee Camp Management

As recommended in the FACT Mission Report, and in agreement with UNHCR, the Red Cross of Chad will immediately begin operations in Tréjine refugee camp; this will be supported by the Federation Refugee Operations office. Red Cross of Chad, in partnership UNHCR will be responsible for setting up the camp, and, in the longer term, will be responsible for Basic Health Care, Sanitation, Camp Management and Social Welfare. In a positive light, this operation will provide opportunity to build the capacity of the Red Cross of Chad in community health and sanitation services; this will not only serve the refugees, but will also provide a basis for extended programs in these fields in future Red Cross of Chad programs throughout the country. The Camp Management experience and the logistics of the refugee operation should provide valuable experience in program management reporting and financial procedures. Emergency Response Units (ERU) in Basic Health Care, Mass Sanitation and Logistics are being mobilized to quickly provide the resources needed to get the camp up and running.

Longer-term needs:

2. Capacity Building of the Red Cross of Chad.

Recruitment of additional personnel is already under way in the field. This recruitment however must be accompanied by immediate on the job training. In the longer term the operation will provide opportunities both within Chad and the region to fully train key National Society personnel in technical fields as well as in project cycle, management, reporting and financial management. Key senior management of the Red Cross of Chad will also benefit from training that will have immediate affect on the operation but will also provide the basis to leave a stronger society in place at the end of the refugee crisis.

National Society infrastructure must also be reinforced in the short and long terms. Immediate needs are sufficient tools to run an effective and modern national society including physical equipment such as computers and vehicles and also the procedures and software that will assist the Red Cross of Chad to plan, manage and report on the projects implemented. In the longer term the Red Cross of Chad is in need of a permanent office building that is suitable to the needs of a well-functioning national society and will also provide the visibility and stature of a premier humanitarian organization. The current offices of the Red Cross of Chad are clearly inadequate for that. The Red Cross of Chad, the ICRC and the Federation are committed to this effort, and encourage all partner national societies (PNS) and donors to recognize and support these needs.

3. Increased Capacity of the Federation Delegation.

The Federation Delegation in Chad will expand its presence in the country. This expansion of responsibilities is intended to provide the needed infrastructure support to the refugee operation. As well, it will offer assistance to the Red Cross of Chad throughout its operations in the country where needed, including support to the ongoing Central African Republic refugee program in southern Chad.

Ten longer term delegates are being recruited to assist the Red Cross of Chad in implementing the operation and building the capacity of the Red Cross of Chad as outlined above. The position of Camp Manager and Head of Sub-Delegation are considered most urgent. The Delegation also requires a new Head of Delegation (HOD), a Finance Development Delegate, a Finance Administration Delegate (FAD) for Abéché, a Health Coordinator, a Water and Sanitation Delegate, a Telecoms Delegate, and Logistics Delegates for both N'Djamena and Abéché. Currently, the TSP Delegate and the Finance Delegate in N'Djamena are in position.

Deployment of ERUs will temporarily augment the response and implementation capacity of the Red Cross of Chad/Federation; however, this is only a partial and temporary solution.

Coordination

Coordination between the Red Cross of Chad and the various implementing agencies is good.

- UNHCR is the lead UN agency, and has taken an early initiative to seek support for the refugees. UNHCR has agreed for Red Cross of Chad and the Federation to establish and manage the new camp in Tréjine; it is estimated to house in excess of 20,000 refugees, with the potential for an additional 10,000-20,000.
- ICRC, in coordination with its response in Sudan, has established a family tracing service, visits national detention centres, and disseminates IHL to Chadian security forces.¹⁰
- A Movement Coordination mechanism has been set up in N'Djamena and Abéché.¹¹
- UNICEF is providing vaccines and is promoting health education in the existing camps.
- Oxfam is coordinating the water and sanitation issues in the camps.
- The Red Cross of Chad has long-term relationships and cooperates well with the French Red Cross, Spanish Red Cross and Swiss Red Cross. These bilateral partner national societies are operational in the context of this current refugee operation.
- Transport Support Package is working closely with UNHCR in support of the relocation of refugees. It is currently estimated that 50,000 refugees will have been relocated when completed as planned by mid-August.

¹⁰ IHL – International Humanitarian Law; see also <http://www.ifrc.org/what/disasters/idrl/>

¹¹ 'Movement' refers to the International Red Cross and Red Crescent Movement.

Chad: Sudanese Refugees; Appeal no. 23/2003; Appeal Revision

The Federation will establish a time-limited presence in Chad for the purposes of this operation. The Federation Head of Delegation will be based in N'Djamena, will coordinate Appeal implementation, will address Organizational Development issues identified in the assessment, and will be responsible for coordinating priorities under this operation with those identified by the Federation Central Africa Sub-regional office (under current and future Annual Appeals). An experienced Head of Sub-Delegation (HoSD) will be recruited, and be based in Abéché. In coordination with his/her National Society counterpart, the HoSD will assist with operational implementation and coordination with UN and other agencies in the zone of operations.

The proposed operation

Objectives, activities planned, and expected results

Overall Objective: To provide for the health and welfare of 17,000-30,000 Sudanese refugees in Eastern Chad.

Objective 1: Camp Management: To install infrastructure and initiate operations in the Tréjine Refugee Camp, and to provide services for more 17,000 refugees in the fields of Camp Management, Basic Health, Sanitation and Community Services.

Activities planned to reach this objective:

- In coordination with UNHCR plan and prepare site of the proposed refugee camp in Tréjine.
- Purchase and deploy the sufficient non-food items in preparation for the refugee relocation to the camp, including but not exclusively tents, hygiene items, kitchen set, jerry cans, hygiene items and materials for camp infrastructure. (Logistics ERU to facilitate this activity).
- Distribution of Food and non-food items.
- To set up the Health Care system in the camp and to purchase and supply sufficient medical supplies and equipment to meet the health needs of the camps population. (Basic Health Care ERU to facilitate this activity).
- To install the sanitation system in the camp to meet the needs of the camp population and to provide hygiene education to the population in order that there is a healthy living environment in the camp. (Mass Sanitation ERU to facilitate this activity).
- In discussions with the camp population and UNHCR to identify and meet the social service needs of the camp community.
- To provide coordination with other agencies working in the camp that in order that the camp functions in a fully integrated manner.
- To provide liaison with community leaders among the refugee community to assure that their needs are being met.
- To coordinate with UNHCR and other agencies in the region to assure that all refugee needs are addressed in a coherent and coordinated manner and that all security concerns are being met, both for the refugees and for National Society staff.
- To liaise with local authorities when necessary.

Expected Results

- Upwards of 17,000 refugees are received, registered and installed in the Tréjine Camp and receive an installation package that meets Sphere standards for refugee support.
- Adequate health support system exists and the refugees are receiving the Sphere standard health care treatment. Health indicators in the camp meet Sphere requirements and are improving.
- The sanitation system in the camp meets Sphere standards and the refugee population is aware of how to maintain their health through proper sanitation practices.
- The operation is fully coordinated with UNHCR and other agencies in the camp and the region.
- Security and protection regime is in place and functioning.

Objective 2: Capacity Building: The Red Cross of Chad has adequate capacity to manage the refugee operation and builds on that capacity to increase their impact on the vulnerable within the country in the future.

Activities planned to reach this objective:

- All key positions will be filled with existing or newly hired staff of the Red Cross of Chad.
- All key staff members will be supported initially by an experienced counterpart.
- Training will be provided in technical fields and also in project cycle, management, reporting and financial management.
- Key senior management of the National Society will also benefit from training that will have immediate effect on the operation but will also provide the basis to leave a stronger society in place at the end of the refugee crisis.
- Purchase of needed equipment and software for the Red Cross of Chad and training in procedures that will assist the National Society to plan, manage and report on the project's implementation
- The Red Cross of Chad has an office building that is suitable to the needs of a well-functioning national society and will also provide the visibility and stature of a premier humanitarian organization.

Expected Results

- The Red Cross of Chad will be fully involved in the implementation of the operation.
- Transfer of skills in the appropriate fields will be made.
- The Red Cross of Chad will be learning and improving their skills throughout the operation.
- In the longer term there will be a scaling back of expatriate presence as Red Cross of Chad takes fuller management of the operation.
- Skills learned in the operation will be used to augment Red Cross of Chad ongoing and newly-developed programmes.

Objective 3: Support to the Local Population. The local population around the Tréjine camps is supported and the Red Cross of Chad builds its presence in the region.

Activities planned to reach this objective:

- In discussion with local population identify needs especially in regards to health and food security.
- In coordination with UNHCR and other agencies assure that those needs are met in order that the local population can live at least to the standards accorded to the refugee camps in the area.

Expected Results

- Local population is receiving support in health, sanitation and food security needs.
- Tension between local population and refugees is kept to a minimum.

Objective 4: Re-Deployment of the Transport Support Package (TSP). After the completion of the refugee relocation in August, to advise on the best use of the TSP in the support of the ongoing refugee operations in eastern Chad.

Activities planned to reach this objective:

- The Red Cross of Chad, the Head of Sub-Delegation and the Fleet Manager will discuss with UNHCR the most effective use of the transport capacity of RC/RC vehicles.
- The parties will reach agreement as to how the TSP can most efficiently support the ongoing Red Cross refugee operation and also play a positive role in the entire zone of operations.
- Ensure adequate workshop facilities and fleet maintenance support either in N'Djamena or in Abeche.

Expected result: The establishment of an effective transport and logistics network that would serve a caseload of up to 40,000 refugees receiving Red Cross support and augment the logistics systems of the UN system and other agencies.

Objective 5: Telecommunications. To ensure effective communications in the operational area and between Abeche and N'Djamena to facilitate the operation and enhance security for expatriate and local staff.

Activities planned to reach this objective:

- Deploy a telecom team to install an adequate telecoms network in the region for operational and security needs.
- Purchase equipment locally and externally, and install the equipment.
- Recruit and train local staff to operate the equipment.

Expected result: A functioning HF and computer network will be established at both the National Society headquarters and in the selected regional centres, including the refugee operation in southern Chad.

Objective 6: Food Pipeline. An alternative to the WFP food pipeline is developed as a back up in case of disruption of food supply.

Activities planned to reach this objective:

- Purchase and storage of a three month back up food supply for 17,000 refugees.
- Purchase and storage of sufficient B5 biscuits and/or CSB for an emergency intervention in case of disruption of food supply.

Expected Results

- Red Cross Operation has food on hand if necessary.
- Food can be distributed if needed in case of emergency.

Assumptions and Risks

Assumptions :

- Donor funding will be available for the Chad operation as well as those in Sudan.
- Mobilization of resources, relief items and refugees is possible in advance of the rainy season.
- The response capacity of the Red Cross of Chad is accomplished without negatively impacting or overburdening their current, on-going operations.
- WFP maintains a sufficient pipeline of food for the operation.

Risks:

- A large influx of additional refugees from Chad will considerably alter and increase the needs in Chad.
- Conflict – internal to Chad and cross-border – is possible and might impact operations.
- Access and transport in the region will be difficult during the rainy season.
- There is a scarcity of trained medical personnel in Chad and among the refugee population.
- High quality francophone delegates are difficult to find with urgent, short notice.
- The security situation in the region will remain complex and difficult.

Red Cross and Red Crescent Movement – Principles and priorities

This operation will adhere to the Sphere Principles and the Code of Conduct. As necessary, staff and volunteers will select beneficiaries according to appropriate and agreed vulnerability criteria.

Communications – Advocacy and Public information

Given the location of the caseload and the relatively low profile or focus on humanitarian needs in this part of Africa, the Federation intends to profile this operation both internally (through its website) and externally (through coverage by the mass media). Care will be taken to ensure that implementing partners in this operation receive adequate recognition.

Capacity of the National Society

The Red Cross of Chad can be considered in many respects a strong and dependable National Red Cross Society.

- It is successfully working with UNHCR in the Central African Republic (CAR) refugee program in southern Chad; since 2002, Red Cross of Chad volunteers have been assisting CAR refugees in three camps.
- It has extensive and successful prior experience with disaster response in floods, epidemic control, and refugees.
- It is one of the main indigenous disaster response organizations in Chad.
- It has developed a strong reputation among embassies and other donors in the country as a reliable organization, based on its successful history of responding to smaller scale and ad hoc humanitarian interventions.
- However, the National Society has only a few paid, professional staff and a limited volunteer base.

In this current operation, the Red Cross of Chad has deployed 140 volunteers to work in the nine established refugee camps in the eastern central region of Chad since November 2003. These volunteers accompany refugees on their relocation trips from the border, rendering welcome and reception services to new arrivals in the camps and promoting and disseminating health education for communicable diseases and HIV/AIDS.

In addition, twenty-three (23) trucks of the Red Cross of Chad - donated by the Norwegian Red Cross and managed under the Transport Support Package (TSP) - are supporting UNHCR in its efforts to relocate refugees from the border areas to safer locations further inland. Four M6 trucks are supporting the southern CAR refugee operation.

Monitoring and evaluation

The programme will be monitored by the Federation's Africa Department. Evaluation and revision of the program will be taken at the end of the year in conjunction with the launch of a longer term appeal.

Map

See Annex 1 below for a UNHCR map of refugee camps and sites: <http://www.unhcr.ch/chad/map070704.pdf>

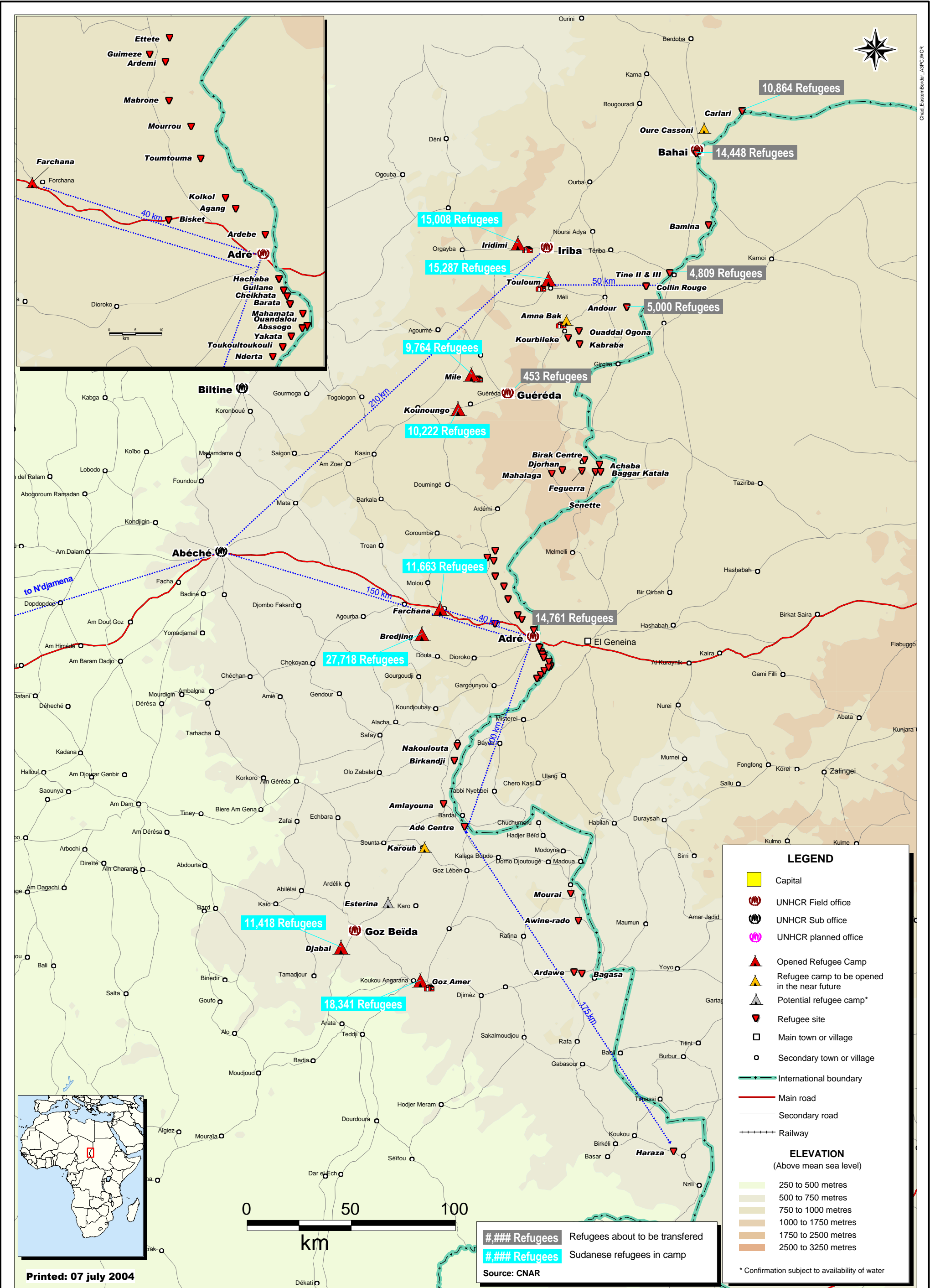
Budget summary

See Annex 2 below for details.

Susan Johnson
Director
National Society and Field Support Division

Markku Niskala
Secretary General

[Click here to return to the title page and contact information](#)



Printed: 07 July 2004

Refugees Refugees about to be transferred
Refugees Sudanese refugees in camp
Source: CNAR

* Confirmation subject to availability of water

REVISED BUDGET SUMMARY**Chad - population movements**

			CHF
RELIEF NEEDS	ORIGINAL	REVISION 1	REVISION 2
Shelter & constructions		1,124,000	1,506,000
Clothing & textiles		24,000	1,007,000
Food & seeds	35,000	3,000	464,000
Water and sanitation	100,000		
Medical & first aid	113,000	1,000	1,685,000
Teaching materials		3,000	3,000
Utensils & tools		2,000	249,000
Other supplies	20,000	123,000	1,519,000
TOTAL RELIEF NEEDS	268,000	1,280,000	6,433,000
<u>CAPITAL EQUIPMENT</u>			
Land & buildings			100,000
Vehicles	221,000	128,000	747,000
Computers & telecom. equipment	102,000	212,000	363,000
Other equipment	10,000		391,000
<u>PROGRAMME SUPPORT</u>			
Programme support (6.5% of total)	150,000	258,000	924,000
<u>TRANSPORT STORAGE & VEHICLE COSTS</u>			
	795,000	1,134,000	2,774,000
<u>PERSONNEL</u>			
Expatriate staff	316,000	622,000	1,359,000
National staff	276,000	37,000	482,000
Consultants		84,000	84,000
Workshops & seminars	38,000	15,000	120,000
<u>ADMINISTRATIVE & GENERAL SERVICES</u>			
Travel & related expenses	10,000	49,000	106,000
Information expenses	15,000	9,000	18,000
Administrative & general expenses	102,000	140,000	314,000
TOTAL OPERATIONAL NEEDS	2,035,000	2,688,000	7,782,000
TOTAL APPEAL CASH, KIND, SERVICES	2,303,000	3,968,000	14,215,000
LESS AVAILABLE RESOURCES (-)			3,648,937
NET REQUEST			10,566,063