

# OPERATIONS UPDATE



International Federation of Red Cross and Red Crescent Societies  
Fédération internationale des Sociétés de la Croix-Rouge et du Croissant-Rouge  
Federación Internacional de Sociedades de la Cruz Roja y de la Media Luna Roja  
الاتحاد الدولي لجمعيات الصليب الأحمر والهلال الأحمر

## INDONESIA: YOGYAKARTA EARTHQUAKE FOCUS ON THE MT. MERAPI VOLCANO

Appeal No. MDRID001  
9 June 2006

The Federation's mission is to improve the lives of vulnerable people by mobilizing the power of humanity. It is the world's largest humanitarian organization and its millions of volunteers are active in over 183 countries.

### In Brief

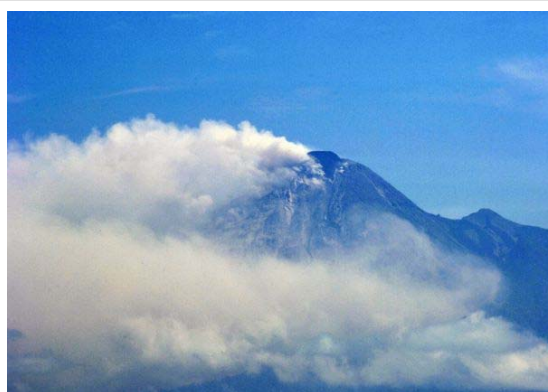
Operations Update no. 3; Period covered: 7 to 9 June 2006; Appeal target: CHF 38,045,439 (USD 31 million or EUR 24 million); Appeal coverage: 55.3% (according to the updated list of contributions; 66.6% including provisional or unrecorded pledges).

[<click here to go directly to the attached Contributions List, also available on the website; click here to view the update map of the affected area, including Mt. Merapi; click here for contact details>](#).

#### Appeal history:

- Preliminary appeal launched on 27 May 2006 for CHF 12.8 million (USD 10.4 million or EUR 8.2 million) for 8 months to assist 200,000 beneficiaries.
- Revised appeal was launched on 6 June for CHF 38 million to assist 325,000 beneficiaries for 12 months.

**Operational Summary:** The Indonesian Red Cross (PMI), with the support of the Federation and partner national societies, continue to gain momentum in the Yogyakarta earthquake response, reaching out to more vulnerable with immediate food, non-food, shelter, medical care, water and sanitation services. The Federation thanks member national societies, their governments, ECHO and private donors for their generous and timely response so far to the appeal. Further cash contributions are urgently needed to step up ongoing and longer-term earthquake response, and the Mt. Merapi volcano contingency planning and preparedness efforts. A particular focus is the reinforcement of pre-positioned relief supplies, human resources, and coordination strategies with the authorities and other humanitarian players.



*Indonesian Red Cross together with the Red Cross and Red Crescent partners are scaling up contingency efforts to prepare for heightened Mount Merapi activity.*

Mt. Merapi (literally meaning "Mountain of Fire") remains at maximum alert level 4. Yesterday (Thursday 8 June) saw a further significant increase in the volcano's activity. During the past days, frequent pyroclastic flows have been observed, each lasting as long as 12 minutes. These flows are now continuous, with a current maximum distance of 5 kms. Up to 300 minor avalanches were also recorded yesterday, and the Mt. Merapi lava dome has now reached a height of 112 metres. This represents a current daily increase of the summit by

3 meters, and an increase of volume of approximately 100,000 cubic metres (cbm). It is estimated that the dome currently holds approximately 4 million cbm of lava material. The 27 May earthquake apparently caused the pyroclastic flow to change direction (now mainly running in a south-easterly direction). Gas plumes vary between 300 – 500 metres in height. Yesterday, a south/south-westerly wind was registered at 10,000 metres, however, the wind-direction at lower altitude is north/north-easterly, blowing the thick volcanic clouds towards the area where most of the earthquake damage had occurred.

A sudden collapse of the volcano could send pyroclastic material, noxious gases and glowing hot ash over several kilometers towards populated areas. There is a total population of approximately 2 million people living in the vicinity of the volcano, and the city of Yogyakarta is only some 20 kms south of the volcano. Despite this danger, there are still many people who refuse to leave their homes and properties. While these would be in immediate grave danger during a dome collapse or vertical eruption, there would also be a greatly increased risk of *lahars*, ash/mud avalanches that could reach a distance of several kilometers and speeds of over 100 kms/hour, posing a significant danger to anyone living further away in the path, or to those unable to escape in time. Stone avalanches can also occur due to the very steep mountain face shaped by the frequent lavafloes.

Mount Merapi is one of the most active volcanoes in the world, and regarded by scientists as a “high-risk” volcano and the most dangerous worldwide. On average, Merapi has erupted every 4-7 years. 32 of the 67 documented eruptions were accompanied by heavy lava flows, a dangerous mix of loose volcanic material, and up to 700° C. hot gases. During the last strong period of activity, 60 people died from the hot ash rain alone. In 1930, the pyroclastic flow reached a distance of over 12 km. In 1872, a vertical eruption blew off the entire summit and created a crater of 288,000 square metres, with a depth of 500 metres. Continuous and gradual lava production produced a total filling up of this crater by 1920. The latest series of eruptions began in July 1998 after a dormant period of 1½ years. Mt Merapi is one of 300 active volcanoes in Indonesia.

*The International Federation undertakes activities that are aligned with its Global Agenda, which sets out four broad goals to meet the Federation's mission to "improve the lives of vulnerable people by mobilizing the power of humanity".*

**Global Agenda Goals:**

- *Reduce the numbers of deaths, injuries and impact from disasters.*
- *Reduce the number of deaths, illnesses and impact from diseases and public health emergencies.*
- *Increase local community, civil society and Red Cross Red Crescent capacity to address the most urgent situations of vulnerability.*
- *Reduce intolerance, discrimination and social exclusion and promote respect for diversity and human dignity.*

All International Federation assistance seeks to adhere to the [Code of Conduct for the International Red Cross and Red Crescent Movement and Non-Governmental Organizations \(NGO's\) in Disaster Relief](#) and is committed to the [Humanitarian Charter and Minimum Standards in Disaster Response \(Sphere\)](#) in delivering assistance to the most vulnerable.

For longer-term programmes in this or other countries or regions, please refer to the Federation's Annual Appeal. For support to or for further information concerning Federation programmes or operations in this or other countries, or for national society profiles, please also access the Federation's website at <http://www.ifrc.org>

For longer-term programmes, please refer to the [Tsunami plan of action 2005-2010](#).

## Background



*Some 20,000 people have been evacuated and are sheltering in camps across Magelang, Sleman and Klaten districts.*

While Yogyakarta and the surrounding districts continue to reel from an earthquake that killed thousands and injured tens of thousands more, Mount Merapi's lava dome swelled, spurting out the heaviest cloud of ash seen to date and creating a stream of lava down its southern slopes. The increased activity followed a tectonic aftershock which experts claim did not have a direct relation to Mount Merapi (not being a volcanic quake) – some 20 kilometres south north of Yogyakarta – but may have triggered some increased volcanic activity. According to the government report from the national coordinating board for the management of disaster (BAKORNAS PB) dated 8 June 2006, the volcano emitted pyroclastic smoke rising 300 metres high and the hot cloud reached a maximum width of 5.5 km wide, causing heavy ashfall in several areas, particularly in Dukun, Srumbung, Duwur, Argomulyo, Blabak, Sawangan as well as Borobudur and its surrounding areas. This report was reinforced by the Centre for Vulcanology and Geological Hazard Mitigation which also reported increased levels of lava flows and pyroclastic clouds.

The government of Indonesia is working on the third case scenario, one level below the worst-case scenario, anticipating over 80,000 people to be displaced. Merapi's last major eruption was in 1994 when more than 60 people were killed. One of its most destructive eruptions was in 1930, when 1,300 people were killed.

The United Nations Office for Humanitarian Affairs (OCHA)<sup>1</sup> field report dated 8 June, however, warns of over sensationalism as Merapi's volcanic activity peaks every two to three years but not in a dramatic way, and the local population of 200,000-250,000 is used to living with the pyroclastic flows and hot clouds produced by the volcano. The local authority sent out orders to evacuate those living within a seven kilometre radius from the volcano.

---

<sup>1</sup> This report is pulled together from information from the Meteorology and Geophysics Agency (BMG), BAKORNAS PB, the Coordinating Minister for People's Welfare (MENKOKESRA), Provincial Coordinating Unit for the Management of Disaster of Central Java, Ministry of Social Affairs, Ministry of Health, UN agencies, NGOs, donors and media reports

On 8 June, total number of internally displaced persons (IDPs) stand at nearly 20,000 in 35-41 camps: (Sleman has 4,420 IDPs in 7-8 IDP shelters; Magelang has 11,934 IDPs in 25-30 IDP shelters; and Klaten has 3,585 IDPs in 3 IDP shelters). No one has been evacuated from Boyolali but standby orders are in place. Federation personnel surveying the sites however caution these numbers may be slightly inflated as they observed some people in camps located at the edge of the danger zone who have moved to camps located in safer areas may have been included twice in the head count.

Red Cross field observations indicate the population is showing signs of fatigue and boredom from constant evacuations as the volcano continues to sputter without hitting maximum activity or dying down. Many have been living in camps for six to eight weeks and are frustrated with the situation. The men often return to the villages during the day to guard property, tend to animals and work on agricultural land, while women and children stay in the safer camp areas.

The local government is the key agency in providing early warning, evacuation, shelter, basic health care, water and sanitation, food and other non-food relief items, as well as human resources and transportation to carry out a successful evacuation process. An interagency disaster management team is in the field and continuing to monitor the overall operation. In the meantime, UN OCHA is carrying out coordination between government, other UN agencies, INGO and NGOs.



*Indonesian Red Cross, with support of the Federation and partner national societies, is setting up health post and mobile medical clinic in Magelang and Klaten to attend to the health needs of the evacuees.*

In the meantime, the Yogyakarta earthquake death toll figures that previously varied has begun to stabilize at 5,722, with most government and international agencies quoting the same number of deaths (BAKORNAS figures). Injuries stand at 37,924. Only the number of displaced is indeterminate, with the government still quoting a low figure with numbers from many districts still not available. Due to the large number of orthopaedic injuries, there is an urgent need for orthopaedic equipment, orthopaedic medicines and orthopaedic personnel.

A total of 122,301 houses are completely destroyed, 172,124 badly damaged and 243,045 damaged. In relation to lives, homes and livelihoods lost, the government has increased its funding requirement for emergency relief and reconstruction programmes from IDR 1.075 trillion to IDR 5 trillion.

## **Operational developments**

There is a high level of coordination between the Federation and the Indonesian Red Cross (Palang Merah Indonesia – PMI) in the Merapi and Yogyakarta earthquake response – most sectors are working jointly with PMI on a variety of activities. The PMI as auxiliary to the government has been heavily involved in Merapi-related activities, mobilizing 350 field action teams (SATGANA) volunteers to assist the government in evacuation, camp management, providing services ranging from relief, shelter, health, field kitchens, psychosocial support and water and sanitation to communities displaced in the various camps in Magelang, Klaten and Sleman districts. These volunteers are under the coordination of Yogyakarta and Central Java PMI provincial chapter office. Federation delegates, staff and emergency response units (ERUs) already positioned in the affected areas also responded to Merapi, either through their already-ongoing activities in the affected areas or through new initiatives specific to the related IDP camps. A team was sent to related sites in Klaten and Magelang especially for surveys and assessments of the Mount Merapi situation.

The Federation and PMI has long been preparing for potential peaking of Mount Merapi activity, having drawn up a contingency plan in line with the government's plan, which was distributed to all relevant parties days before the

Yogyakarta earthquake struck on 27 May. Covering the areas of evacuation, temporary shelter, medical services, relief distribution, water and sanitation and mobile medical teams, the plan also placed eight ambulances and 14 field kitchens on standby. Food and non-food stock was pre-positioned in Magelang and Sleman, and more were placed in warehouses in Jakarta, Surabaya, Padang/West Sumatra. Some 400 PMI trained volunteers were ready at the district level, with the possibility to receive assistance from 36 neighbouring branches, amounting to a capacity of more than 3,000 volunteers. This plan will be reviewed and revised soon in adaptation to the current situation.

#### Summary of the contingency plan:

##### Indonesia Red Cross (PMI)

- Engaged in: evacuation, providing temporary shelter, ambulance and medical services, field kitchens, relief distributions, water and sanitation, and mobile medical teams
- Human resources mobilized: 400 trained SATGANA and youth volunteers, local medical teams in all district levels
- Field kitchens – 14 field kitchens
- Ambulances – eight ambulances

##### Additional capacity

- 5,000 ready food packs (pre-positioned stock in Magelang and Sleman)
- Non-food items: (for 5,000 families in warehouses in Jakarta, Surabaya, Padang/W. Sumatra ) – family tents, tarpaulins, family kits, hygiene kits, sleeping mats, mosquito nets, second hand clothing
- Four Indonesian regional Medical Action Teams + one field hospital unit
- Two water tankers and four water bladders (supported by the Spanish Red Cross) and six additional bladders
- 36 neighbouring branches (more than 3,000 volunteers and ambulances and field kitchens)
- National level: national response team (KHUSUS) with PMI capacity of 30 provincial branches

Much of these resources were diverted to the Yogyakarta earthquake operation and PMI standby teams initially pulled out of Mount Merapi to focus on Yogyakarta needs. However, when Mount Merapi started spewing high levels of pyroclastic ash on 8 June and more people were evacuated, the PMI, Federation and several partner national societies already active in the relevant districts immediately responded in accordance to the contingency plan. PMI mobilized 22 trucks to aid the evacuation process in Klaten and Magelang, and with its volunteers, evacuated more than 1,000 people in coordination with local government units.

Although stocks pre-positioned for Mt. Merapi were drained for the Yogyakarta earthquake operation, the PMI and Federation relief teams, which include an American/Spanish relief ERU, regional disaster response teams (RDRT) and other Federation/PMI relief staff and volunteers, succeeded in mobilizing emergency shelter and non-food items to the affected areas. Within the last two days, 1,000 people (200 families) displaced by Mt. Merapi received family tents, while 400 families received tarpaulins, hygiene kits and emergency food parcels which include bottled water. Stocks are expected to be replenished by the end of the week.

In the meantime, the PMI field kitchen service is providing hot meals three times a day to more than 5,000 people. There are currently five field kitchens in Magelang, three in Klaten and one in Sleman servicing thousands of camp inhabitants.

Health coverage was also included in the contingency plan, and the Federation/PMI/partner national societies initiative is providing a health post and a mobile medical clinic each in Magelang and Klaten. An additional mobile medical clinic is functional in the affected areas. As of 8 June, 2,000 families (approximately 10,000 people) have received basic health care services from PMI. PMI psychosocial support programme (PSP) teams are working in the affected areas, particularly in the district of Magelang and Klaten. PSP initiatives in Klaten are receiving assistance from partner national society PSP teams mobilized from tsunami operations in Aceh. Children seem to be more affected and are afraid of Mt. Merapi's volcanic activity, testified by one of the displaced women interviewed by a Red Cross information delegate. Consequently, PSP initiatives include activities for children in the IDP camps.

In water and sanitation, PMI water trucks are providing clean water to more than 2,000 internally displaced people (IDP) in Magelang and Klaten, while sanitation services are provided to 4,000 IDPs displaced by Merapi. Hygiene promotion and waste management campaigns are also being carried out in all Merapi-related IDP camps. On an overall basis, PMI/Federation water and sanitation services in the whole district of Klaten and Magelang – which includes both Merapi and earthquake displaced – cover a total of 6,400 people in various camps. Ten litre capacity bladders are located in each camp, which are filled three times a day to a total of 120 litres of water a day, supported by water supplies from the government (PDAM) and a partner national society treatment plant. Vector control activities are also carried out everyday, consisting of disinfectant sprays to minimize presence of flies and odours. 50 kg capacity waste bins are located in each camp to service waste management, which are periodically emptied by local authorities. PMI/Federation is further upgrading latrines in these camps according SPHERE standards and building additional ones to complement pre-existing latrines from the government.



*The Indonesian Red Cross has mobilized 350 field action teams (SATGANA) volunteers to assist the government in Mount Merapi evacuation and camp management of displaced people.*

It is reported that while other camps are managed by the government, a Federation delegate reports that in one camp in particular that is fully managed by PMI in Magelang, conditions are very good. The PMI is providing a full range of support services in the camp, ranging from relief, water supply, vector control, waste management, sanitation facilities, health and PSP, field kitchens and emergency shelter. Observations indicate that the camp is neatly maintained and well managed.

### **Coordination**

With the support from the Federation and under the PMI headquarters coordination from Jakarta, East Java, West Java and Central Java, 500 additional volunteers, 10 more field kitchen units and 20 mobile medical units are on stand by. To address major emergency situations, fresh water for an additional 5,000 IDPs, sanitation for 10,000 more IDPs, emergency shelter for 1,000 families and non-food relief items (i.e. hygiene kits, emergency food parcels, baby kits, tarpaulins, sleeping mats, family kits) for 5,000 families are available in pre-positioned stock in the field

The PMI national headquarters has already deployed special teams to assist the Merapi emergency response operation related to the increasing volcanic activity. The national headquarters has close communication with all branches and the national coordinating board for the management of disaster (BAKORNAS PB). Routine information sharing is also ongoing with the Red Cross and Red Crescent Movement partners, United Nations agencies, international non-governmental organizations (INGOs), donors and embassies. Continuous monitoring is round the clock in the operation room at the PMI national headquarters.

The Federation's sub-delegation in Yogyakarta started working on 30 May, just three days after the Yogyakarta earthquake struck. This was made possible by drawing temporarily upon existing PMI, Federation and partner national society staff from Jakarta and the tsunami operational areas. These personnel will return to their posts, as delegates and local staff dedicated to the Yogyakarta response are being recruited and deployed. There currently are over 148 Federation Secretariat, ERU, RDRT and partner national society delegates and staff involved in the Yogyakarta operation. The Federation has opened 25 positions for key sub-delegation delegates. Urgently sought are candidates for the head of sub-delegation, finance delegate and logistics programme coordinator positions.

### **Red Cross and Red Crescent action - objectives, progress, impact**

The PMI, Federation Secretariat and partner national societies involved in the Yogyakarta earthquake operation are working towards an integrated assessment model to coordinate the different assessments which are taking place. A working meeting was held yesterday (8 June) to formulate and pilot the first cross-sectoral, integrated

Red Cross assessment form in the country. It is reported that the initiative has been well received by all parties involved and the outcomes may be positive.

An integrated approach to programming for PMI and Federation activities is also being explored, and work to determine target districts for all sectors to concentrate on for a high impact approach is ongoing and being fed by assessments conducted so far.

More detailed and consolidated partner national society response to the earthquake will be reflected in the next operations update. Below highlights the main progress achieved to date against the appeal objectives.

The Danish Red Cross IT/Telecom ERU is currently creating a radio network which is being installed in five local branches. The ERU has also successfully installed internet access at the PMI headquarters.

### Emergency relief (food, non-food and emergency shelter)

**Overall Goal: Beneficiaries have the necessary immediate support to meet their basic needs for food, non-food items and shelter until their permanent needs are met for the long-term.**

- Relief teams from the PMI, Federation, American/Spanish relief ERU and RDRT have served a total of 20,141 families (approximately 100,700 individuals) with food and non-food relief items.
- A significant achievement at coordination meetings in Bantul and Klaten was that many partner national societies (French Red Cross, Swiss Red Cross, Iranian Red Crescent and other NGOs) agreed towards the Federation being the main coordinating body responsible in linking them with the PMI.
- For detailed information on PMI/Federation relief distributions, please refer to the distribution table:

**Table: Food and non-food distribution by PMI/Federation**

District	Families	Tents	Tarpaulins	Hygiene kits	Food parcels	Baby kits	Jerry cans
Bantul	10397	5384	5403	1821	3407	554	3163
Klanten	4754	671	3366	3087	1913		264
Sleman	2101	415	3372	718	-	167	-
Kulon Progo	1718	369	2498	-	-	-	-
Yogyakarta	784	1	464	174	573	-	274
Boyolali	200	200	200	200		-	-
Gunung Kidul	187	-	142	50	80	-	265
<b>Total</b>	<b>20141</b>	<b>7040</b>	<b>15445</b>	<b>6050</b>	<b>5973</b>	<b>721</b>	<b>3966</b>

*\* These numbers are preliminary as supporting documentation is continuously received*

- Distribution of so many items was possible because PMI had significant stocks already in their warehouses for the Mount Merapi contingency. The Federation has mobilized from the Medan disaster preparedness stock a total of 1,700 body bags, 4584 kerosene lamps, 4,584 kerosene stoves, 1,607 sleeping mats, 61,000 tarpaulins, 8,713 tents, 5,000 baby kits, 3 new emergency health kits (NEHK), 15,000 hygiene kits, water and sanitation material (tap stands and tanks) and other medical supplies such as bandages, medicines and surgical material.
- In addition to the in kind contributions made so far by partner national societies, the delegation is procuring locally for immediate needs 120,000 *sarongs* (local clothing), 12,000 baby kits, 40,000 hygiene parcels, 40,000 food parcels and 80,000 sleeping mats. The following items are urgently needed and welcomed from member societies (please refer to [mobilization table](#) for the latest quantities):
  - Tarpaulins.
  - disposable face masks (for Mount Merapi contingency).
  - adult auxiliary crutches.
- The Federation plans to replenish shortly the preparedness stock. Donors are urged to make cash contributions for replenishment (see disaster response and disaster preparedness section).

**Objective 1: Food: 65,000 families (approximately 325,000 beneficiaries) have supplementary food support until such time as they are able to resume their own income generating activities.**

For detailed information on relief distributions, please refer to the table.

**Objective 2: non-food items: 65,000 families (approximately 325,000 beneficiaries) have the necessary household items and basic economic support to restore domestic stability, and their own capacity to initiate their recovery is reinforced.**

The PMI/Federation has begun its early recovery needs assessment this week for various cash or in-kind distribution options, with the secondment of a livelihoods specialist for two weeks greatly aiding process. Two British Red Cross volunteers who come from Yogyakarta are also part of the assessment team. For detailed information on relief distributions, please refer to the table.

**Objective 3: Emergency shelter: 65,000 families (approximately 325,000 beneficiaries) are provided with the appropriate type of emergency shelter, tools and materials to support their immediate recovery needs, with consideration of temporary, intermediate requirements for coping with the pending monsoon rain season that normally starts in September/October.**

For detailed information on relief distributions, please refer to the distribution table.

The International Federation is leading the emergency shelter coordination group in Yogyakarta that is independent of the Federation's relief response programming. Key highlights from the shelter group include:

- A 'rapid shelter security assessment' is being planned; baseline data will be available on 15 June.
- Mapping of 'who / what / where' is underway. Initial geographic 'gap analysis' will soon be available.

#### ***Logistics support***

In logistics, the Federation logistics team (supported by the British Red Cross logistics ERU), PMI and other Movement partners have carried out activities in a fully cohesive and joint manner, coordinating well on resource strategies and providing support to partner national societies. There are three warehouses in place, one of them a Federation/PMI central warehouse in Yogyakarta where two additional Rubb halls (temporary warehouse tents) have been set up with a partner national society. The other two are a medical warehouse and a warehouse especially designated for unsolicited goods. All are managed by PMI.

The current fleet now stands at 28 trucks used to support relief operations and receipt of goods being flown in. The PMI has just received an additional donation of seven trucks from a local supplier and the trucks will be driven down tonight (9 June 2006). Many of these were driven in convoys from tsunami operations in Medan to the southern tip of Sumatra, then transferred to Java by ferry and moved on to Yogyakarta. Air operations are also ongoing, and since 30 May, 22 flights have been received, with 20 of those transferring goods through internal charter flights direct from the Medan warehouses to the airports in Solo and Yogyakarta using Boeing 737 or 727 planes. Goods from two Illusion 76 planes carrying tents and a partner national society mobile clinic were also trucked from the two airports in Solo and Jakarta.

#### **Health and Care**

**Overall goal: The mortality and morbidity amongst the affected population is reduced to pre-disaster levels by addressing immediate basic health care needs and future health risks through preventative and basic health care interventions.**

A health assessment with PMI branches is complete. It is an extremely comprehensive assessment in all areas affected by earthquake, with only the analysis stage remaining. This analysis will help determine the most suitable operational district for all sectors. This will be the last health assessment conducted, and the health sector will continue monitoring, regular health activities and capacity building (technical equipment, on-the-job training).

**Objective 1: To provide psycho-social support programs (PSP) to affected communities in districts severely affected by the earthquake and to PMI volunteers supporting the response.**

- PSP activities are scaling up. A PSP assessment is complete and key findings are available in the emergency appeal.

- Approximately 605 children and 61 teachers have been reached through informal and formal educational activities and 217 adults (women, elderly, village leaders, traditional birth attendants) have been reached through psychological first aid.
- Materials and space have been provided in five schools for teachers to restart schooling activities. Teachers are being provided assistance and information to deal with children's reactions to stress in the classroom.
- Federation tents were set up and American Red Cross school chests were provided to these schools.

**Objective 2: Reduce the impact of the most common diseases and ailments seen in post disaster situations, including epidemics.**

- PMI/Federation is working closely with the health cluster led by WHO, which is monitoring the health situation.
- The health cluster reported that it is too early for epidemics, although a slight increase in tetanus was indicated. The Federation/PMI already has a stock of 20,000 doses to treat tetanus on standby and will provide most to the Ministry of Health.
- There are some reported measles cases – the government is starting its measles campaign in response.
- Monitoring of the malaria situation is ongoing.

**Objective 3: To provide 325,000 beneficiaries with access to preventive, basic clinical and physical health and rehabilitation services.**

- PMI mobile clinics continue to serve affected communities. Twelve of the 18 mobile clinics and one static clinic have served 6,192 patients in 23 villages. If these figures are extrapolated for all clinics, it is projected that 8,000 patients have been seen in 30 villages.
- To date, the ICRC/Norwegian Red Cross/PMI field hospital has treated 2,234 people.
- There are at least four partner national society medical teams in place in the affected areas.

**Objective 4: To support and coordinate efforts with Movement partners and international partners in support to the PMI and its government (MoH).**

- One aspect of the plan towards this objective is to have one key partner national society in each geographical area acting as a key coordination guide for other national societies, building capacities of less experienced partner national societies and acquainting them with standard Federation systems.
- Coordination with health and other clusters is ongoing.

**Objective 5: To ensure the target population has access to adequate and safe water supply, sanitation and hygiene promotion, materials and facilities to prevent significant outbreaks of water supply, sanitation and hygiene related disease.**

- PMI/Federation trucks currently providing regular water supply to seven villages affected by the earthquake.
- Detailed assessments have been conducted jointly by a team consisting of three partner national societies and PMI/Federation in Klaten and Bantul.
- In the emergency response phase, three water treatment plants have been installed from two partner national societies.
- There are 55 PMI volunteers involved in water and sanitation throughout the affected areas.

**Overall Goal: To reduce losses and suffering of vulnerable communities due to disasters through risk reduction and strengthening of preparedness and emergency response capacities of Indonesian Red Cross.**

- The Federation through the American/Spanish relief ERU is working to replenish stock in warehouses that was diverted from Mount Merapi to the Yogyakarta operation.
- Streamlining of assessment processes and forms are ongoing to pilot an integrated assessment model.
- Contingency plan for Mount Merapi was put in place.

## **Organizational Development**

**Overall Goal: PMI in the affected area has the structures, systems, skills and capacities to deliver quality services to the most vulnerable.**

**Objective: PMI's organizational structures in the affected areas are rebuilt and have increased capacity, skills and resources to implement PMI's Strategic Plan and continue to provide services to vulnerable groups in the earthquake-stricken areas.**

- Damage assessments are planned and are ongoing.
- The Jakarta-based organizational development delegate together with the PMI has conducted an initial assessment of the requirements and needs for human, material and financial resources.
- External recruitment and secondment of PMI staff is underway.
- IT and other office equipment for some affected branches has been procured.

**[Infographic map contributions list, and contact details below; click here to return to the title page.](#)**

***For further information specifically related to this operation please contact:***

- *In Indonesia: Indonesian Red Cross (PMI), Mr. Arifin M. Hadi (acting head of disaster management division); mobile: (+62 811) 943952; telephone: (+62 21) 799 2325 ext. 222; email: [arifinmhd@telkom.net](mailto:arifinmhd@telkom.net)  
Federation delegation, Mr Peter Cameron (acting head of delegation); email: [peter.cameron@ifrc.org](mailto:peter.cameron@ifrc.org);  
mobile: +62 81 2104 8209; Mr Peder Damm (head of sub delegation in Yogyakarta); email: [ped@drk.dk](mailto:ped@drk.dk);  
mobile: +62 811 927 334, tel (PMI Yogyakarta branch office): +62 274 376812.*
- *In Thailand: Federation Southeast Asia regional delegation, Mr Michael Annear (head of disaster management unit, phone: +66 2661 8201 ext 430, e-mail: [michael.annear@ifrc.org](mailto:michael.annear@ifrc.org); Mr Bekele Geleta (head of regional delegation), phone: +66 2661 8201 ext 100, email: [bekele.geleta@ifrc.org](mailto:bekele.geleta@ifrc.org)*
- *In Geneva: Asia Pacific department, Mr Gert Venghaus; email: [gert.venghaus@ifrc.org](mailto:gert.venghaus@ifrc.org), mobile +41 79 217 3368, phone: +41 22 730 4258, fax: +41 22 7330395.*

# Indonesia - earthquake

ANNEX 1

APPEAL No. MDRID001

## PLEDGES RECEIVED

09/06/2006

DONOR	CATEGORY	QUANTITY	UNIT	VALUE CHF	DATE	COMMENT
-------	----------	----------	------	-----------	------	---------

### CASH

REQUESTED IN APPEAL CHF ----->				38,045,439		TOTAL COVERAGE 55.3%
ALBANIAN - RC		10,000	USD	12,113	01.06.06	
AMERICAN - RC		219,000	USD	265,275	30.05.06	
AMERICAN - GOVT/USAID-OFDA		1,000,000	USD	1,211,300	02.06.06	
BRITISH - RC		150,000	GBP	340,650	28.05.06	
BRITISH - RC		200,000	GBP	456,000	07.06.06	
BRITISH - GOVT/DIFD		980,392	GBP	2,235,294	07.06.06	OPERATIONAL COSTS, OVERHEADS
CAMBODIA - PRIVATE DONOR		100	USD	121	31.05.06	
CANADIAN - RC		100,000	CAD	112,100	27.05.06	
CANADIAN - GOVT		500,000	CAD	560,500	28.05.06	
CHINA - HONG KONG RC BRANCH		200,000	HKD	32,500	28.05.06	RELIEF ITEMS
CHINA - HONG KONG RC BRANCH		2,000,000	HKD	311,800	07.06.06	EMERGENCY SHELTER
CROATIA - GOVT/RC				220,000	30.05.06	
CZECH - RC		4,494	USD	5,444	31.05.06	
DANISH - RC				38,670	27.05.06	
EGYPTIAN - RC		50,000	USD	60,565	07.06.06	
ECHO (03002)		2,165,397	EUR	3,375,854	02.06.06	
ESTONIA - RC		32,000	EUR	49,888	05.06.06	
FINNISH - RC		80,000	EUR	124,720	31.05.06	
FINNISH - GOVT		200,000	EUR	311,800	31.05.06	
IRISH - RC		50,000	EUR	77,950	31.05.06	SHELTERS
IRISH - GOVT		500,000	EUR	779,500	30.05.06	
JAPANESE - GOVT		1,000,000	USD	1,211,300	02.06.06	
JAPANESE - RC		100,000,000	JPY	1,081,000	04.06.06	
JAPANESE - RC		200,000,000	JPY	2,162,000	09.06.06	
LIBYAN - RC				10,000	30.05.06	
MONACO - RC		20,000	EUR	31,180	06.06.06	
NETHERLANDS - GOVT		1,000,000	EUR	1,579,000	30.05.06	
NEW ZEALAND - GOVT		500,000	NZD	399,500	29.05.06	
OPEC FUND		600,000	USD	726,780	09.06.06	
SINGAPORE - GOVT/RC		150,000	SGD	115,335	05.06.06	RELIEF ITEMS
SINGAPORE - PRIVATE DONOR		50,000	EUR	77,950	01.06.06	
SWEDISH - GOVT		3,000,000	SEK	509,460	30.05.06	
SWISS - RC				100,000	29.05.06	
SWISS - PRIVATE DONORS				11,913	31.05.06	
WHO/VERF - STAFF MEMBERS				4,000	29.05.06	
SUB/TOTAL RECEIVED IN CASH				18,601,462	CHF	48.9%

### KIND AND SERVICES (INCLUDING PERSONNEL)

# Indonesia - earthquake

ANNEX 1

APPEAL No. MDRID001

## PLEDGES RECEIVED

09/06/2006

DONOR	CATEGORY	QUANTITY	UNIT	VALUE CHF	DATE	COMMENT
-------	----------	----------	------	-----------	------	---------

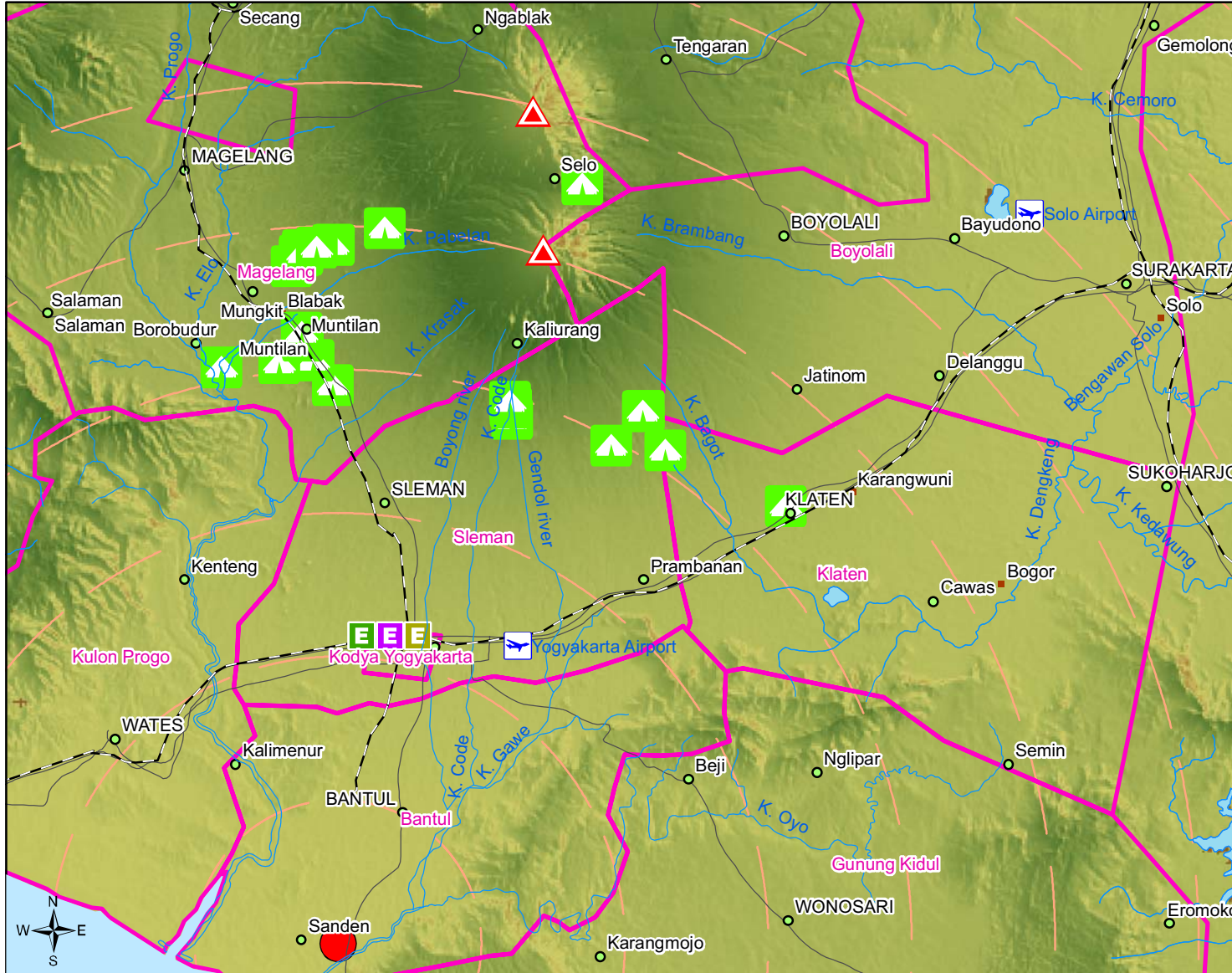
DONOR	CATEGORY	QUANTITY	UNIT	VALUE CHF	DATE	COMMENT
					06.06.06	
AMERICAN - RC/SPANISH - RC				100,000		ERU RELIEF, COMPLETE
AMERICAN - RC				212,800		80000 SLEEPING MATS
BELGIUM - RC				398,116		20000 TARPAULINS, 3 EMERGENCY HEALTH KITS
BRITISH - RC				150,000		ERU LOGISTICS MK1 MODULE
DANISH - RC				130,000		ERU TELECOMMUNICATION
GERMAN - RC				473,065		200 ANTITETANUS IMMUNOGLOBULINS, 15000 TETANUS VACCINE, 1500 MINOR SURGERY SETS, 200 MONO PP, 1000 AXILLARY CRUTCH, 30 AMOXYCILLIN
JAPANESE - RC				960,461		15000 VACCINE TETANUS, 2 EMERGENCY HEALTH KITS, 1500 MINOR SURGERY KITS, 10000 INFUSION SETS, 10000 IV CANNULA, 7471 AXILLARY CRUTCH , 9600 AMOXYCILLIN, 1 ERMERGENCY HEALTH KIT, 20000 TARPAULINS,
SPANISH - RC				12,472		10 KITS, WATERTANKS
SUB/TOTAL RECEIVED IN KIND/SERVICES				2,436,914	CHF	6.4%

## ADDITIONAL TO APPEAL BUDGET

DONOR	CATEGORY	QUANTITY	UNIT	VALUE CHF	DATE	COMMENT
CHINESE - RC		50,000	USD	60,565	29.05.06	DIRECT ASSISTANCE
IRANIAN - RC		254,720	USD	308,542	07.06.06	DIRECT ASSISTANCE: 1500 PCES TENTS, 1500 SETS GROUND SHEETS, 5000 PCS SOAP
UNITED ARAB EMIRATES		1,073,370	USD	1,300,173	04.06.06	DIRECT ASSISTANCE: 35 MT DRUGS, TENTS, BLANKETS
SUB/TOTAL RECEIVED				1,669,280	CHF	



# Indonesia: Yogyakarta earthquake



- Earthquake epicentre
- 10 km distance
- Volcanoes
- Most affected districts
- Cities
- Roads
- Railroads
- Airports
- Rivers
- Lakes
- Altitude**
- High  
Low
- Emergency Response Units (ERU)**
- IT/Telecom
- Logistics
- Relief
- IDP camps

The maps used do not imply the expression of any opinion on the part of the International Federation of Red Cross and Red Crescent Societies or National Societies concerning the legal status of a territory or of its authorities.

Map data sources: ESRI, UNOSAT, OCHA, IFRC, <http://inisiatif.rsgisforum.net/merapi/dataspasial.html>

