

# Operations update



International Federation  
of Red Cross and Red Crescent Societies

## China: Sichuan Earthquake

Emergency appeal n° MDRCN003  
GLIDE n° [EQ-2008-000062-CHN](#)  
Operations update n° 18  
31 December 2008

### Six-Month Consolidated Report

**Period covered by this update:** First six months, 16 May – 30 November 2008

**Appeal target (current):** CHF 167,102,368 (USD 137.7 million or EUR 110 million), <click [here](#) to view the attached revised emergency appeal budget>

**Appeal coverage:** With contributions received to date, in cash and kind, and those in the pipeline, the appeal is currently approximately 51 per cent covered.

<click [here](#) for interim financial report>

<click [here](#) to link to a map of the affected areas; or [here](#) for contact details>

### **Appeal history:**

- A revised emergency appeal was launched on 20 November 2008 for 167,102,368 (USD 137.7 million or EUR 110 million) to assist 200,000 families (up to 1,000,000 people) for 31 months.
- An emergency appeal was launched on 30 May 2008 for CHF 96.7 million (USD 92.7 million or EUR 59.5 million) in response to the huge humanitarian needs and in recognition of the unique position of the Red Cross Society of China supported by Red Cross Red Crescent partners to deliver high quality disaster response and recovery programmes.
- A preliminary emergency appeal of CHF 20.1 million (USD 19.3 million and EUR 12.4 million) was issued on 15 May 2008 to support the RCSC to assist around 100,000 people affected by the earthquake for 12 months.
- CHF 250,000 (USD 240,223 or EUR 155,160) was allocated from the International Federation's Disaster Relief Emergency Fund (DREF) on 12 May 2008, to support the RCSC to immediately start assessments of the affected areas and distribute relief items.



Despite the hardships and uncertainties of temporary shelter living, children continue to do what they do best. These smiling faces greet the arrival of Red Cross staff and volunteers who continue to respond to the communities' needs. Li Zheng/ International Federation.

**Summary:** This is a six-month consolidated report of the progress and challenges against some of the objectives set out in the 20 November Revised Emergency and Recovery Appeal. The operation is expected to end in December 2010, therefore the timeframe of the revised emergency appeal which was launched on 20 November is amended from 31 months to 26 months. A final report is due in March 2011.

With the exception of the few remaining relief activities, the focus of the International Federation operations has since moved from the procurement, distribution and monitoring of relief items, meeting emergency shelter needs, and the provision of emergency water and sanitation services with accompanying base camp support through the deployment (and handing over) of four International Federation Emergency Response Units (ERUs) towards reconstruction, recovery and disaster risk reduction actions.

The situation and needs have changed significantly in the past six months since the earthquake struck, resulting in a revision of the appeal. The appeal reflects the RCSC and its partners continued efforts to focus on areas where needs have been identified based on technical assessments in relief, shelter, water and sanitation, psychosocial support and health services, disaster management and livelihoods.

The RCSC will address these needs through support of the International Federation and partners in the key areas of relief, recovery and reconstruction, community-based programming and organizational development. An integrated approach to programming and capacity building as well as the cross-cutting measures of disaster risk reduction will be at the core of all activities.

The plans of action were developed after technical assessments were conducted and are based on realistic expectations of the ability of the RCSC to scale-up the size and complexity of its programming. The processes and activities implemented under this appeal will include the provision of technical assistance to the RCSC and the joint implementation of pilot programmes that RCSC may then consider scaling up with the substantial resources raised in response to their national fundraising campaign. It is clear that the needs in the region are enormous. The only limit of the International Federation's support will be the funding received and the joint capacity of the RCSC and International Federation to implement the planned activities.

At the request of the RCSC leadership, the International Federation will continue to play a key role in the coordination of Red Cross Red Crescent Movement-supported activities. The East Asia regional office in Beijing supports the Chengdu operations support office and the RCSC headquarters with mainly strategic planning and communications with partners, and is further supported by the Asia Pacific zone office in Kuala Lumpur.

Many partner national societies have already made contributions to the appeal: American Red Cross, Australian Red Cross/Australian government, Belgian Red Cross/ Belgian government, British Red Cross, Bulgarian Red Cross, Canadian Red Cross/Canadian government, Cook Islands Red Cross, Croatian Red Cross, Czech Red Cross, Danish Red Cross/Danish government, Estonian Red Cross, Finnish Red Cross/Finnish government, German Red Cross, Icelandic Red Cross/ Icelandic government, Indian Red Cross, Irish Red Cross/ Irish government, Japanese Red Cross/Japanese government, Lithuanian Red Cross, Malaysian Red Crescent, Mauritius Red Crescent, Monaco Red Cross, Netherlands Red Cross/Netherlands government, New Zealand Red Cross/New Zealand government, Norwegian Red Cross, Qatar Red Crescent, Singapore Red Cross, Spanish Red Cross, Swedish Red Cross/ Swedish government, Sri Lanka Red Cross, Turkish Red Crescent and United Arab Emirates Red Crescent Society, as well as contributions from American, Greek, Italian, Luxembourg, Slovenian and South Africa governments, OPEC Fund for International Development, the Stavros Niarchos Foundation and many corporate partners.

The Red Cross Society of China has also received many bi-lateral contributions of funding, including the following: Canadian Red Cross, Cambodian Red Cross, French Red Cross, German Red Cross, Japanese Red Cross, Republic of Korea Red Cross, Norwegian Red Cross, Pakistan Red Crescent, Singapore Red Cross, Spanish Red Cross, Swiss Red Cross, Thai Red Cross, Turkish Red Crescent and Viet Nam Red Cross. These contributions have been added to the various substantial resources raised domestically by the Red Cross Society of China in its national fundraising appeal.

The appeal totalling 167.1 million is 51 per cent covered, with cash and in-kind contributions totalling CHF 85.4 million received. Total expenditure from May until the end of November 2008 is CHF 50.1 million<sup>1</sup>.

The International Federation, on behalf of the Red Cross Society of China, would like to thank all partners for their very quick and generous response to this appeal.

<sup>1</sup> Please note that the interim financial report attached reflects income and expenditure up to November 2008 only. For the latest information on contributions, click [here](#) for the latest donors' response list.

[<click here to view the revised emergency and recovery appeal budget>](#), [<presented by sector>](#)  
[<click here to view the interim financial report>](#)  
[<click here to view a map of the affected areas>](#)  
[<click here to view contact details>](#)

## The situation

Six months have passed since the earthquake devastated Wenchuan and the surrounding areas of Sichuan, Gansu and Shaanxi provinces in western China on 12 May which left, by official count, 69,200<sup>2</sup> dead, 375,000 injured, 18,500 still listed as missing and over 15 million displaced.

The region is still plagued by seismic activity making it virtually unsafe and impossible for many to return to the areas where their homes used to be. Colder than average temperatures forecasted by the meteorological department for this winter and the cold front from Siberia which lashed China last week has plunged temperatures to below freezing in the quake zone.

Meteorologists are anticipating this winter will be unusually cold in the earthquake area, and as the cold weather looms over Sichuan, millions of families displaced by the May 12 earthquake are still without proper homes. Thousands of families are still living in transitional shelters and tents under harsh conditions and as freezing weather hit parts of Sichuan, the top priority is to ensure that these affected people, especially those living in extremely cold and remote rural and mountainous areas, have much needed warmth through the winter. Quilts, blankets, winter clothes and repairs to homes are urgently needed if they are to bear the winter cold. Along with the rains causing landslides, the harsh weather is also causing people to fall ill.

The country is going full speed in its recovery efforts and rebuilding of entire communities. The central government issued a reconstruction policy and guidelines on post-quake construction, and began the process of making reconstruction plans and announced specific funding support. Other provinces and municipalities were "twinned" with specific affected areas for immediate and long-term support.



Many families still live in transitional shelters under difficult conditions, worsened by the freezing winter temperatures. With reconstruction of homes being the top priority, many people are going without the basic essentials so as to save up enough money to start reconstruction. The woman above is still living in a tent, unable to venture out to seek work as her husband was injured during the earthquake and is now disabled. Melisa Tan/International Federation.

On 9 November, the central government announced a USD 586 billion (approximately CHF 619 billion) stimulus package to boost domestic investment in light of the global financial crisis and a rapid slowdown in the Chinese

<sup>2</sup> No official statement by the government has yet been declared on the status of the 18,500 missing people. However, some media reports quote a death toll of over 80,000 people.

economy. The package earmarked CNY 20 billion (CHF 2.8 billion) from the 2009 central budget for reconstruction in regions devastated by the 12 May earthquake. The CNY 20 billion funds are on top of the CNY 70 billion (CHF 9.8 billion) promised by the central government for this year, and have been transferred in advance to the provinces of Sichuan, Gansu and Shaanxi to speed up construction in the fourth quarter and also for the first quarter of next year.

It is proposed that Sichuan, the hardest hit province, would receive CNY 17 billion, while Gansu would get CNY 2 billion and Shaanxi CNY 1 billion. In the meantime, another CNY 13.3 billion from the 2008 budget was handed over to these provinces, with CNY 11.3 billion to Sichuan, CNY 1.27 billion to Gansu and CNY 740 million to Shaanxi.

It is unclear if this package will be enough to buffer the tough times ahead. The economy has slowed in the third quarter and has already slowed down further in the fourth, and is expected to continue to decline in 2009. The manufacturing sector which has produced 14 percent of the clothing, toys and footwear imported into the US has decelerated rapidly over the past few months. Thousands of factories have been closed due to the falling global demand for Chinese-made products. Smaller businesses have also had to close and increasing job losses have had a huge impact on the millions of migrant workers who are now forced to return to the countryside. Labour unrest has been reported in Gansu province and the country is bracing for more demonstrations.

Although government-led recovery and reconstruction has moved at a rapid pace with reconstruction, given the unprecedented scale of the disaster, the reconstruction and recovery needs are enormous. More than 5.2 million houses will need to be constructed in the affected areas, along with thousands of schools and health facilities. The funding gap for these areas is huge. Reconstruction planning has already commenced in some areas, under the guidance of the government monitors, and the government is hoping to get more under way in the coming months.

Sichuan alone has 51 heavily affected counties, and many are still left without “twinned” support. According to the Sichuan Provincial Civil Affairs Department, 195,000 homes, less than 16 percent of the total needed, have so far been built. An additional 685,000 are under construction. While reconstruction has begun, many are still unable to begin rebuilding their homes due to a lack of financial and human resources. In some of the hardest-hit counties such as Beichuan and Anxian which have many towns and villages that need to be permanently relocated, sites for rebuilding houses have yet to be selected. Local authorities are still making prefabricated homes to enable those residents whose houses have not been built to move in by the end of December.

## Red Cross and Red Crescent action

### Overview

While many relief items and assistance from government, non-governmental organizations (NGOs) and the Red Cross Society of China have been well received and helpful to the affected populations, many families have expressed that their greatest wish is to move into their own home as soon as possible, and the improvement of their financial and emotional security.

Following a joint RCSC and International Federation shelter and recovery assessment in Sichuan, Gansu and Shaanxi provinces and a meeting with partner national societies in October, details of a coordinated Movement approach was finalized, with the findings and recommendations being used to formulate the details for a reconstruction and recovery plan of action as well as the integrated community-based programming that will complement the shelter reconstruction in targeted areas.

The [Emergency and Recovery Appeal](#) was revised at the end of November and reflects the International Federation of Red Cross and Red Crescent Societies' continued commitment towards assisting the Red Cross Society of China (RCSC) in meeting the huge needs of communities affected by the 12 May Sichuan earthquake.

### Recovery

The International Federation's plan is to support the RCSC in the area of recovery with focus on the reconstruction of family homes in three, possibly four, townships of Mianzhu county in Deyang Prefecture. The International Federation's support to the RCSC will include technical and financial support along with a comprehensive coordination and management system to provide a holistic approach throughout all programming areas. It also aims to meet identified financial needs of the beneficiaries to support them in the reconstruction of their homes through relevant livelihoods programming.

The priority will be to start reconstruction in the townships of Jiulong (4,728 homes), Banqiao (5,346 homes) and Zundao (7,466 homes) which totals 17,540 village homes. The RCSC and International Federation will provide reconstruction support for all family houses that need reconstruction within the three townships, assisting all

families that need to rebuild their homes. If adequate funding becomes available, the fourth township in Mianzhu county, Xinglong township (5,000 homes), will also be covered.

The International Federation will provide a CNY 20,000 (CHF 3,547) cash grant, rather than materials, to be allocated in three installments, in correlation with the foundation, walls and roof as they are completed respectively. This CNY 20,000 is estimated to cover approximately 25 – 30 per cent of the total cost of building the core house (not including finishing). The homeowner will fund the rest of the core house through a combination of government grants and loans, homeowner savings and salvaged materials. The core house will provide the homeowner with proper residential conditions while the finishing can be completed over time as when the homeowner has the necessary additional financial resources. In addition to the CNY 20,000 cash grant, the International Federation will provide additional support to the communities through community-based programming and livelihood cash grants for the most vulnerable families in these townships.

Quality assurance is provided by the government supervisors and will be reinforced through a joint RCSC and International Federation team of qualified technical experts and monitors in each township. In addition, technical assistance and awareness-raising on the necessity of earthquake resistant construction will be a key contribution of the International Federation.

In line with the government's proposal, the International Federation and the RCSC will support the owner-driven model of home reconstruction, as are other NGOs involved in the area. Under this model, the primary decision-making responsibility and overall driving force of the home reconstruction lies with the homeowner.

Beneficiaries for International Federation housing reconstruction support will be selected according to three criteria; 1) home was fully destroyed or destroyed beyond repair by the earthquake; 2) family unable to self-finance reconstruction of home; and 3) family agrees to rebuild home according to the government's rules and regulations for earthquake-resistant houses.

Many schools and health facilities were severely damaged or destroyed in the earthquake. The RCSC has agreed to support reconstruction of township schools, township clinics and village health stations. Within the three provinces, the number of institutions needing rebuilding is immense. At this time, the RCSC has identified 56 township schools, 132 township clinics and 169 village health stations within the three provinces that will require Red Cross Red Crescent support. The construction of these facilities totals over CNY 2.4 billion (CHF 422.2 million).

The RCSC has agreed that support for these reconstruction projects can be funded bilaterally, unless otherwise agreed upon. Thus, these projects have not been included in this revised appeal budget, but are nonetheless included in the RCSC's list of reconstruction projects seeking funding.

At this time, a number of partners have agreed to fund individual projects bilaterally, including the Canadian Red Cross, German Red Cross, Japanese Red Cross, Malaysian Red Crescent, Republic of Korea Red Cross, Singapore Red Cross and Thai Red Cross. Nevertheless, a huge funding gap for township level schools, clinics and village health clinics remains even with this positive response from partner national societies.

### **Community-based programmes**

Community-based programmes will be incorporated in an integrated approach towards bringing health and psychosocial care, water and sanitation, livelihoods and disaster preparedness measures to the same communities where family homes are being reconstructed. It is crucial that communities themselves play an active part in the identifying, preparing and working towards reducing the risks and vulnerabilities that they face. Technical delegates and their counterparts in each of these areas will work closely with the communities to identify key needs and assist them in developing appropriate solutions.

The RCSC and International Federation will conduct vulnerability and capacity assessments with each community as programming commences. Through this tool, the national society and the communities themselves will be able to identify key concerns and programming priorities for each village in the affected area. Integrated programming can then be designed as needed for each community, in alignment with the reconstruction activities.

The International Federation's health and care programme aims to address the physical, social and psychological needs of beneficiaries in a sustainable manner. Communities will be empowered with knowledge on community-based health issues, provided with psychosocial support and prepared on health in emergencies guidance. It incorporates health and care services that are preventive, curative and rehabilitative, and by using an integrated community-based approach, intends to develop local capacity to respond to health situations during emergencies and non-emergencies.

The water and sanitation programme aims to reduce the risk of waterborne diseases and the vulnerability of populations in those areas affected by natural disasters. Interventions include the installation of gravity fed water supply systems to earthquake affected villages as well as installing water boreholes in areas where the water quality has been tested and shown to contain high levels of bacteria. Families who are not able to construct latrines during house construction will also receive latrine construction support.

Livelihoods programming aims to alleviate the vulnerable situation faced by families, especially the elderly and disabled. Through various interventions such as rehabilitating damaged or destroyed livelihood assets and developing sustainable income generating activities, families will not only be able to accelerate the reconstruction of their homes but also the rebuilding of their lives.

Strengthening disaster management will entail a range of different approaches, including the establishment of disaster preparedness centres, a strengthened infrastructure, the training and preparedness of volunteers, establishment of warehouses, logistics support, and human resources for effective implementation.

With earthquakes, floods and other natural disasters frequently hitting the country, preparing for and coping with disasters is not enough in terms of reducing risk and building safer communities. The programme is implemented in coordination with the ongoing community disaster preparedness programmes of the national society. RCSC will concentrate efforts to reduce the vulnerability of communities by enhancing their capacity to plan and implement appropriate disaster risk reduction activities that prepare them for potential future disasters. For example, the International Federation will support the setting up of three disaster preparedness centres in the affected provinces to facilitate relief activities, to provide localized storage and act as distribution hubs.

RCSC has also requested the International Federation's support in strengthening their capacities to serve the needs of beneficiaries not only in Sichuan, where the majority of the revised appeal's community-based programmes are concentrated, but in Gansu and Shaanxi provinces as well. As such, the International Federation is extending its reach to earthquake-affected communities in those two provinces through its support of the RCSC's community-based disaster preparedness model, which has been a successful model in recent years after its development with support of many partners.



Students assembling in front of a temporary school in Pengzhou, erected with the support of the Red Cross Society of China. International Federation.

### **Bilateral support by partner national societies**

The national society has agreed to support reconstruction of townships schools, townships clinics and village health centres. Within the three provinces, the number of institutions needing rebuilding is immense. The rehabilitation of health, water and sanitation systems, and disaster management and disaster risk reduction capacities is also a priority for the RCSC. As such, several partner national societies are providing direct support to RCSC's earthquake support projects in addition to multilaterally supporting owner driven shelter reconstruction through the International Federation's appeal.

American Red Cross has expressed interest to support some of RCSC's earthquake operation projects, especially in the areas of water and sanitation and disaster management. However, detailed plans and arrangements will only begin early next year.

Australian Red Cross visited Sichuan to meet with RCSC's provincial, city and county branches to discuss a possible post-earthquake community-based disaster preparedness programme. As Australian Red Cross is currently supporting a similar project in Guangxi Zhuang Autonomous Region, they are looking to replicate the lessons and successes from this to selected 'generally-affected' areas in Sichuan. Planning is in the early stages at present, and it is envisaged that they may begin in the first quarter of 2009.

The Canadian Red Cross has been a strong partner with the RCSC in the areas of health and disaster management for the past 20 years. Over the next three years, the Canadian Red Cross, working directly with the RCSC, will help rebuild 14 township clinics in Gansu. In addition, the Canadian Red Cross will also provide vital health, livelihoods and preparedness programming in Gansu and Sichuan.

Canadian Red Cross-supported health initiatives include pre-existing HIV/AIDS programming in the region. HIV/AIDS is a huge health concern in Sichuan province and the earthquake further compounded the health risks of this epidemic by destroying health centres and limiting access to health care. Canadian Red Cross programme will work with local volunteers to provide community-based health programming and training in this area.

German Red Cross is supporting RCSC with the reconstruction of health clinics in three areas; Dagan township in Dujiangyan county (which was the location of the German Red Cross field hospital), Wujia township in Fucheng county and Fanjia township in Lizhou county. These three counties are all situated in Sichuan province. German Red Cross is also providing technical advice and support to RCSC to set up an ERU system within their disaster management programme.

Japanese Red Cross is supporting RCSC bilaterally in three areas. Initial support is through the provision of quilts, heaters, winter clothes and washing machines to families still living in transitional shelters and tents. With the onset of winter, 63,000 quilts, 63,000 pieces of winter clothes, and 5,000 washing machines will be distributed in Chengdu, Deyang, Mianyang, Yaan, Aba and Guangyuan. Japanese Red Cross also provides capacity building support in six RCSC branches in Sichuan, two in Gansu and one in Shaanxi provinces. The second area of support is in the construction of two schools and two clinics in Sichuan, two schools and 18 clinics in Gansu and eight schools and nine clinics in Shaanxi province. Various options are being considered for the third area, amongst them reconstruction support in to-be-relocated cities such as Beichuan, and the supply of equipment and technical assistance for the Japanese Red Cross supported clinics.

Malaysian Red Crescent has expressed support to RCSC in the reconstruction of ten health clinics in Dagan township in Deyang prefecture.

Singapore Red Cross is supporting RCSC reconstruction of two township clinics, two township schools and 10 village health centres in Sichuan province. It is also supporting five township clinics, seven township schools in Shaanxi province and four township clinics and three township schools in Gansu province.

The Republic of Korea Red Cross Society is supporting RCSC in the reconstruction of two township schools in Deyang, Sichuan, while Thai Red Cross is supporting in the reconstruction of two township clinics and two township schools in Shaanxi province.

**The following section reports on the objectives and expected results outlined in the 20 November revised appeal of the International Federation's support to RCSC's reconstruction and recovery plans. Due to the recent launch of this appeal, not all objectives can be reported on at this stage.**

## Relief

<b>I. Relief distributions (basic food and non-food items)</b>	
<b>Objective 1: (Emergency and Early Recovery Phase: 1 to 12 months):</b> To ensure that up to 200,000 earthquake-affected families receive basic food and non-food items to support their move into transitional shelter and meet the ongoing needs for relief for vulnerable groups (once the first three months of government assistance are complete).	
<b>Expected results</b>	<b>Activities</b>
<ul style="list-style-type: none"> <li>Up to 200,000 families receive a minimum of one quilt (to supplement the early government distributions) during the first 12 months of the operation</li> </ul>	<ul style="list-style-type: none"> <li>Procurement, transportation and distribution of 300,000 quilts</li> <li>Procurement, transportation and distribution of 100,000 food parcels</li> <li>Procurement, transportation and distribution of</li> </ul>

<ul style="list-style-type: none"> <li>Up to 100,000 families receive food parcels during the first 12 months of the operation</li> <li>100,000 families receive hygiene kits during the first 12 months of the operation</li> </ul>	100,000 hygiene kits (including bucket)
--	---

<b>II. Emergency shelter</b>	
<b>Objective 1: (Rescue and Relief Phase: 0 to 3 months):</b> To ensure that up to 100,000 earthquake-affected families receive emergency shelter (family tents) to help preserve their physical and mental well-being, human dignity and prevent the further deterioration of the humanitarian situation.	
<p style="text-align: center;"><b>Expected Results</b></p> <ul style="list-style-type: none"> <li>100,000 families are safely sheltered in family tents by the end of June 2008</li> </ul>	<p style="text-align: center;"><b>Activities</b></p> <ul style="list-style-type: none"> <li>The mobilization (including transportation and distribution) of 100,000 family tents through in-kind donations /local and international procurement</li> <li>Logistics technical support following International Federation standard operating procedures for RCSC tracking, documentation and distribution (3,000 – 5,000 tents per day)</li> <li>Monitoring</li> </ul>
<b>Objective 2: (Transition and Early Recovery Phase: 1 to 12 months):</b> To provide technical support to the RCSC for the implementation of their transitional shelter programme (1,000 health centres and 1,500 schools) and provision of a base camp or transitional shelters to RCSC branches to support earthquake operations (including counterpart accommodation for ERUs).	
<p style="text-align: center;"><b>Expected Results</b></p> <ul style="list-style-type: none"> <li>RCSC staff and volunteers are supported to manage a large transitional shelter programme (health centres and schools)</li> </ul>	<p style="text-align: center;"><b>Activities</b></p> <ul style="list-style-type: none"> <li>Technical assistance in transitional shelter planning and management</li> <li>Deployment of a base camp in Deyang and transitional shelter facilities for more than 60 Red Cross Red Crescent local and international personnel</li> <li>Handover of base camp facilities to RCSC branches</li> </ul>

## Shelter and relief

**Progress:** Since the earthquake, Red Cross Society of China staff and volunteers, with the support of the International Federation, have worked tirelessly to provide assistance to those affected by the disaster. To date, over one million beneficiaries have been reached with emergency relief items including shelter, water, quilts and other relief items. About 80 percent of the beneficiaries are in Sichuan province ([See Annex 1 for table showing the distribution of quilts and hygiene kits](#)).

The 100,000 tents provided by the International Federation to the relief operations were fully distributed within Sichuan, Shaanxi and Gansu. A small portion of those have been used to restock disaster preparedness warehouses, while some 1,000 tents were sent to the affected populations of the Panzhihua earthquake, which hit on 30 August. ([See Annex 2 for a table showing the distribution of tents](#)).

While most of the relief distributions (quilts, hygiene parcels) have been successfully carried out, further needs were identified, related to the onset of winter, and the RCSC and International Federation are working closely together, providing an additional 200,000 quilts (in addition to the 100,000 already distributed by November) and 100,000 food parcels to support RCSC's efforts to help communities mitigate the impact of severe winter conditions. ([See Annex 3 for the table showing the distribution of additional quilts](#)). Initially, it was thought that families would need kitchen sets. However, assessments have since identified that kitchen sets are not needed and that many families, through self-recovery, have salvaged adequate kitchen supplies.

The procurement process for the 200,000 quilts was expedited with approval and support from Geneva through the regional logistics unit in Kuala Lumpur, in line with International Federation standards and procedures. Suppliers were selected in compliance with RCSC/International Federation specifications and all quilts are scheduled to be delivered by the end of the year.

RCSC has begun procuring the food parcels which will include rice and cooking oil for affected families in Sichuan, and wheat flour and cooking oil for affected families in Gansu and Shaanxi. Deliveries of these food parcels will begin soon. (See Annex 4 for distribution list).



Covered in a sea of Red Cross. These quilts and other items have brought relief to those made homeless. 200,000 more quilts have been requested by families to help them get through winter. International Federation.



The Red Cross mobilized more than 100,000 tents to meet the huge shelter needs in the aftermath of the earthquake. Today, reconstruction has started but millions more continue to live in temporary shelters including Red Cross tents. Kita Taro/ Japanese Red Cross.

### Emergency health and care (including psychosocial support)

#### III. Emergency health and care (including psychosocial support)

**Objective 1: (Rescue and Relief Phase: 0 to 3 months):** To support the deployment of medical, first aid and psychological support teams to serve the emergency health and care needs of more than

20,000 earthquake-affected people during the first 30 days after the disaster.	
<p><b>Expected Results</b></p> <ul style="list-style-type: none"> <li>RCSC is supported to deploy 10 medical and first aid teams for the first 30 days after the disaster</li> </ul>	<p><b>Activities</b></p> <ul style="list-style-type: none"> <li>Rapid deployment of 10 (2 RCSC and 6-8 health professionals) teams on two-week rotations</li> <li>Technical advice</li> <li>Monitoring</li> </ul>
<p><b>Objective 2: (Transition and Early Recovery Phase: 1 to 12 months):</b> To provide technical assistance and training in support of RCSC health service provision (through RCSC health clinics and to complement the water and sanitation ERUs) during the first 12 months after the disaster.</p>	
<p><b>Expected Results</b></p> <ul style="list-style-type: none"> <li>RCSC capacity to support or provide quality health services through up to 1,000 transitional RCSC health clinics, field hospitals and to complement three water and sanitation ERUs is enhanced</li> </ul>	<p><b>Activities</b></p> <ul style="list-style-type: none"> <li>Technical advice and training in emergency health and care, psychological first aid and basic psychological assessment</li> <li>Training and awareness raising for RCSC on the needs and methods for longer term psychosocial programming</li> </ul>

**Progress:** The RCSC headquarters, along with its Sichuan branch and many other provincial branches, provided medical assistance to those injured and affected by the disaster. RCSC headquarters mobilized ten medical teams, over 200 staff from other provinces and rescue and relief teams from other Red Cross branches to Sichuan. The Sichuan Red Cross branch dispatched medical teams to Pengzhou, Beichuan, Dujiangyan, Anxian, Mianzhu, Shifang and Pingwu to treat thousands of seriously injured people. The Sichuan Red Cross branch also sent 71 Red Cross first aid teams to provide assistance to thousands of people. Altogether, over 35,000 Red Cross staff and volunteers assisted in the relief effort.

The German Red Cross set up a field hospital during the relief phase in Dujiangyan, which has since been handed over to the RCSC. The 54-bed field hospital treated approximately 66,000 patients, and along with the three ambulances available to the hospital, also provided mobile post-operative care to displaced survivors.

In addition to the medical support during the relief phase, the RCSC has been providing psychological support in schools and the community. It is piloting a psychosocial programme to train teachers to help their students emotionally as they return to their learning environments after suffering such extreme losses. Psychosocial care centres are being set up in at least five schools in Sichuan. The International Federation health delegate in Chengdu has been working closely with a team of programme managers and professionals to provide them with additional resources and assistance in their programme development. The health delegate has also spent time in the field assessing the needs of the people, and providing both technical and programming support to the local Red Cross branches and RCSC headquarters teams.

#### Emergency water and sanitation, and hygiene promotion

IV. Emergency water and sanitation, and hygiene promotion	
<p><b>Objective 1: (Rescue and Relief Phase: 0 to 3 months):</b> To provide urgently needed drinking water, sanitation services and hygiene promotion to up to 30,000 earthquake affected people for the first three months of the operation.</p>	
<p><b>Expected results</b></p> <ul style="list-style-type: none"> <li>Two water and sanitation emergency response units (ERUs) effectively serving 30,000 earthquake-affected people in Mianzhu prefecture for the first three months of the operation</li> <li>One mass sanitation ERU effectively serving 20,000 earthquake-affected people in Mianzhu prefecture for the first three months of the operation</li> </ul>	<p><b>Activities</b></p> <ul style="list-style-type: none"> <li>Deployment of two M15 water and sanitation emergency response units (ERUs)</li> <li>Deployment of one mass sanitation module (ERU)</li> <li>On-the-job training and technical support to RCSC ERU “counterparts”</li> </ul>
<p><b>Objective 2: (Transition and Early Recovery Phase: 1 to 12 months):</b> To provide technical assistance and training in support of the handover of emergency response units (ERUs) to RCSC and continuation of service provision during the first 12 months after the disaster.</p>	
<b>Expected results</b>	<b>Activities</b>

<ul style="list-style-type: none"> <li>• RCSC effectively takes over and continues service provision of ERUs for 12 months after the disaster</li> <li>• RCSC staff have enhanced capacity for providing emergency water and sanitation</li> </ul>	<ul style="list-style-type: none"> <li>• Technical support and training for RCSC hygiene promoters using participatory hygiene and sanitation transformation (PHAST) methods</li> <li>• Technical support for the handover and continuation of service provision of ERUs</li> <li>• Provision of basic water and sanitation kits for Red Cross Red Crescent staff and volunteers who are deployed for relief operations.</li> <li>• Monitoring and evaluation</li> </ul>
--	--

**Progress:** As an immediate response to the disaster, the International Federation deployed two water and sanitation emergency response units (Austrian and Spanish Red Cross) and one mass sanitation module emergency response unit (British Red Cross) to cover water and sanitation needs in Mianzhu county, one of the worst affected counties with over 90 percent of the houses damaged. The emergency response units focused on the four rural townships of Jiulong, Banqiao, Zundao and Xinglong. Between 5 June and 21 September, the water and sanitation emergency response units distributed some 4,149 million cubic metres of water, reaching nearly 20,000 people. The mass sanitation module emergency response unit provided hundreds of latrines, reaching thousands of people.

All emergency response units have since been handed over by the International Federation to the RCSC. By September, all units were completely closed down as the needs had been reduced in the area to the point where the local water bureau could provide for them. They have since been packed and stored for future deployment.

RCSC staff and volunteers were not provided with basic water and sanitation kits as it was not needed in the end,

The joint assessment conducted in September also covered water and sanitation needs to finalize the water and sanitation recovery programme using an integrated approach.

## Recovery

### Shelter reconstruction

Shelter reconstruction	
<p><b>Objective 1: (Recovery Phase: 7 to 31 months):</b> To support 22,540 households of the most vulnerable earthquake-affected families in Jiulong, Zundao, Banqiao and possibly Xinglong Townships of Mianzhu County to reconstruct their homes using the “owner-driven” reconstruction model.</p>	
<p><b>Expected results</b> Homeowners and local authorities receive necessary technical support to build earthquake-resistant homes</p>	<p><b>Activities Planned</b></p> <ul style="list-style-type: none"> <li>• Homeowners receive technical advice and support via village level trainings and at the household level</li> <li>• Existing architectural plans are reviewed for compliance with earthquake-resistant guidelines</li> <li>• Architectural plans for smaller homes are provided (if needed)</li> <li>• Existing standard construction contracts are reviewed and upgraded to provide protective measures for homeowners</li> <li>• Construction skills training provided to villagers, artisans/builders (if needed)</li> </ul>
<p><b>Expected results</b> Supplementary monitoring and quality control that reinforces and complements the government of China’s monitoring and quality control to support homeowners and contractors to build earthquake resistant homes<sup>3</sup></p>	<p><b>Activities Planned</b></p> <ul style="list-style-type: none"> <li>• Beneficiary and monitoring database developed</li> <li>• MoU and project agreements signed with local authorities and homeowners</li> <li>• Technical officers, supervisors and engineers hired and trained</li> <li>• Main office at prefecture level and sub-offices in townships set-up</li> <li>• Supplementary monitoring and quality control systems put in place</li> <li>• Homes that are already under construction are reviewed for compliance with earthquake resistant guidelines</li> </ul>

<sup>3</sup> As the government is responsible for ensuring quality, the International Federation cannot assume liability.

<p><b>Expected results</b></p> <p>Homeowners receive necessary financial support to build earthquake-resistant homes</p>	<p><b>Activities Planned</b></p> <ul style="list-style-type: none"> <li>• Homeowners receive support to remove rubble and foundations (via livelihoods)</li> <li>• Cash grants are provided to homeowners at three stages in the building process (foundation, walls, roof) that meet earthquake resistant guidelines</li> </ul>
<p><b>Expected results</b></p> <p>Homeowners have the necessary information and knowledge to build earthquake-resistant homes</p>	<p><b>Activities Planned</b></p> <ul style="list-style-type: none"> <li>• Village level information dissemination meetings held and door to door visits conducted</li> <li>• Informational materials on policies, guidelines and regulations are developed</li> <li>• Information on construction contracts developed</li> <li>• Other materials and trainings designed to inform and empower homeowners to monitor and control the construction of their homes</li> </ul>

**Progress:** Over the past few months, a series of memorandums of understanding have been signed between RCSC headquarters, its branches and various provincial and prefecture/district authorities in preparation for the reconstruction projects. The national society has clear priorities for Red Cross Red Crescent Movement support in the rebuilding of village houses, schools, township clinics, village health stations, community centres and a rehabilitation facility for the disabled and injured in various affected areas in Sichuan, Gansu and Shaanxi provinces. It is expected that contributions from RCSC headquarters, provincial branches, Hong Kong and Macau Red Cross branches of the Red Cross Society of China, the Taiwan Red Cross Organization, the International Federation and partner national societies will go towards some of these projects.

Although urban reconstruction in centralized locations have started and in some cases, well in advance, a majority of people living in rural areas are still living in transitional shelters or tents due to a lack of funds to begin reconstruction work.

A joint RCSC and International Federation [shelter](#)<sup>4</sup>, health and water and sanitation assessment was conducted in September. It aimed to provide an analysis of the winter needs for families living in government prefabricated shelters and self-made transitional shelters in areas where the RCSC and International Federation propose to build village homes and to recommend appropriate shelter programming options and provide analysis of the constraints and opportunities.

Following the above assessment which formed the basis for the reconstruction and recovery plan of action ([click here for Annex 5 which shows the International Federation's "owner driven" reconstruction model](#)), a shelter consultant arrived in Chengdu in November to conduct a risk analysis and feasibility study of the reconstruction plan. He also provided advice in the development of staff structures and job descriptions for the recruitment of the shelter and reconstruction coordinator, construction delegates, technical assistants, etc., that make up the management and monitoring teams. Recruitment of these teams has started and they will be in place shortly.

A second shelter consultant, currently involved in the tsunami "owner-driven" construction in Sri Lanka, arrived in Chengdu in early December to provide further technical assistance in reviewing the construction implementation plans and to provide insights and expertise into the development of an interactive database that would contain beneficiary information as well as contain monitoring data crucial in the implementation of the project. Successfully implemented, the database would generate monitoring forms for each beneficiary at each stage of monitoring: whether earthquake-resistant guidelines are being followed and if beneficiaries should receive the next installment of the cash grant. The database would generate the list of beneficiaries that are eligible to receive the cash grants. It also has several report functions, including beneficiary lists by village or natural village, reports based on stages of construction, reports based on monitoring results, reports showing funds received, etc.

A memorandum of understanding, project agreements and home owner agreements are being developed which will be used prior to the transfer of International Federation cash support for "owner driven" reconstruction. These inputs aim to better inform recovery and reconstruction planning for the RCSC and International Federation as a whole.

The memorandum of understanding will clearly define the roles and responsibilities of each party involved in the reconstruction including the International Federation, the RCSC and the relevant government authorities at the

<sup>4</sup> The shelter assessment will be made available on Fednet in the first week of January 2009. FedNet is an intranet accessible to Red Cross Red Crescent Movement members only.

prefecture level. There will be a memorandum of understanding for the Federation's programmes that will cover construction, water and sanitation, health, disaster management and livelihoods projects.

Each programme area will sign project agreements with the local branch of RCSC and the relevant local government authorities such as the county and township governments, Water Bureau and Ministry of Agriculture at county level. These agreements will clearly outline roles and responsibilities of each party in a clear and detailed manner.

Homeowner project agreements between county level RCSC branches, the International Federation and households receiving International Federation cash support are also being prepared. These agreements will clearly explain the expectations and requirements to participate in the programme.

Beneficiary lists are being compiled by the relevant government authorities. Once these lists have been collected and the criteria for shelter construction support are verified, cash transfers from the government and International Federation can proceed. While the government is responsible for ensuring that guidelines are met, it is in the interest of home owners to meet these guidelines in order to receive the cash allowances and build safe homes.

**Challenges:** Reconstruction is the biggest priority at the moment. Construction is moving ahead quickly in some areas because families not only wish to move out of transitional shelters but to also do so in time for the Chinese Lunar New Year which falls on 25 January 2009. The price for cement and other construction materials have gone up due to high demand, and this has led to an increase in construction costs. There are fears that people are using cheaper and sub-standard materials to build their homes, leading to a compromise in earthquake resistant safety standards. The stretched capacity of local authorities has also raised concerns in regards to the ability to properly monitor all houses and to ensure that all guidelines are met. As such, the International Federation will complement the existing structures by engaging a number of reconstruction monitors and provide information to home owners to emphasize the importance of earthquake resistant construction.



All around Mianzhu, people are either building their own homes or hiring contractors to do so. In the urgency to move into their homes in time for the Chinese Lunar New Year, there is concern about the quality of these new homes. The Red Cross' requirement that houses be built according to earthquake-resistant guidelines will encourage people to build safer homes. Melisa Tan/International Federation.

## Health and Care and psychosocial support

I. Health and Care	
<b>Objective 1 (Recovery Phase: 7 to 31 months):</b> To reduce the vulnerability of the earthquake-affected population to public health risks through a community-based health (CBH) approach.	
<b>Expected results</b> There is significantly increased knowledge how to prevent and manage public health risks	<b>Activities Planned</b> <ul style="list-style-type: none"> <li>Integrated baseline and knowledge, attitude and practice (KAP) survey completed</li> </ul>

among earthquake affected communities	<ul style="list-style-type: none"> <li>• Village health volunteers have attended community-based health training courses and conducted regular household visits in targeted communities</li> <li>• 70 percent of the targeted communities have functional village health committees</li> </ul>
<p><b>Expected results</b></p> <p>The knowledge and capacity of RCSC board members, staff and volunteers to coordinate, manage and implement programmes is significantly strengthened</p>	<p><b>Activities Planned</b></p> <ul style="list-style-type: none"> <li>• Orientation session and road show of programmes to all stakeholders</li> <li>• RCSC induction courses are provided to all new volunteers</li> <li>• Training of trainers for volunteers on community-based health</li> <li>• Monthly meetings for the RCSC staff, volunteers and board members</li> <li>• First aid training for volunteers</li> <li>• Develop necessary information, education and communication materials on psychosocial support programme and community-based health</li> </ul>

<b>II. Psychosocial Support</b>	
<b>Objective 1 (Recovery Phase: 7 to 31 months): Improve the psychological resilience of the earthquake affected population.</b>	
<p><b>Expected Results</b></p> <p>Earthquake-affected people are able to manage stress and overcome crisis in their communities, individually, and among their families</p>	<p><b>Activities Planned</b></p> <ul style="list-style-type: none"> <li>• Integrated baseline survey and knowledge, attitude and practice (KAP) survey completed</li> <li>• Locally adapted information, education and communication (IEC) materials are developed and disseminated</li> <li>• Training of trainers conducted in close cooperation with schools</li> <li>• Care centres in village community centres and schools are established</li> <li>• Village health volunteers are trained in psychosocial support</li> <li>• Trained RCSC volunteers conduct household visits in the targeted communities</li> <li>• Establish peer support groups</li> <li>• Targeted schools are equipped with first aid kits</li> <li>• Teachers are trained in psychosocial first aid</li> <li>• Emergency and first aid preparedness of the targeted schools is improved (creating first aid posts, school emergency areas)</li> </ul>

**Progress:** The high number of deaths and injured left in the wake of the earthquake continue to leave a physical and emotional toll on those affected. Huge losses incurred, the stress of rebuilding homes and anxieties about the future amongst others, have led to more attention being given to the importance of psychological health. Psychological rehabilitation has become a major issue during the reconstruction project, thus the government is paying greater attention to the psychological health of people and officials in quake-hit areas.

Although people are focused on reconstruction and rebuilding their lives, the trauma felt by those affected by the earthquake continues. The International Federation's health delegate has been busy providing support to schools and communities to overcome this through the promotion of a better understanding about the International Federation's psychosocial support programme and the differences between psychosocial support methods and clinical psychology. Community-based psychosocial support programme interventions are being introduced at all levels of the community, including the Hongda Middle School and Yinghua Middle School in Shifang county, in Deyang prefecture. 80 students from Yinghua Middle School had perished when their school collapsed during the earthquake. Students at both schools are still receiving lessons in the government's prefabricated classrooms.

The International Federation and RCSC conducted a two-day psychosocial support training which was participated by 12 teachers from ten primary and middle schools in Deyang, Shifang and Mianzhu. Techniques to observe and detect the long-term effects on children were demonstrated. The training also stressed the importance of ensuring children with permanent injuries recover not only physically but psychologically as well. Teachers were trained on activities conducive to the children's growth and motivational levels, while also

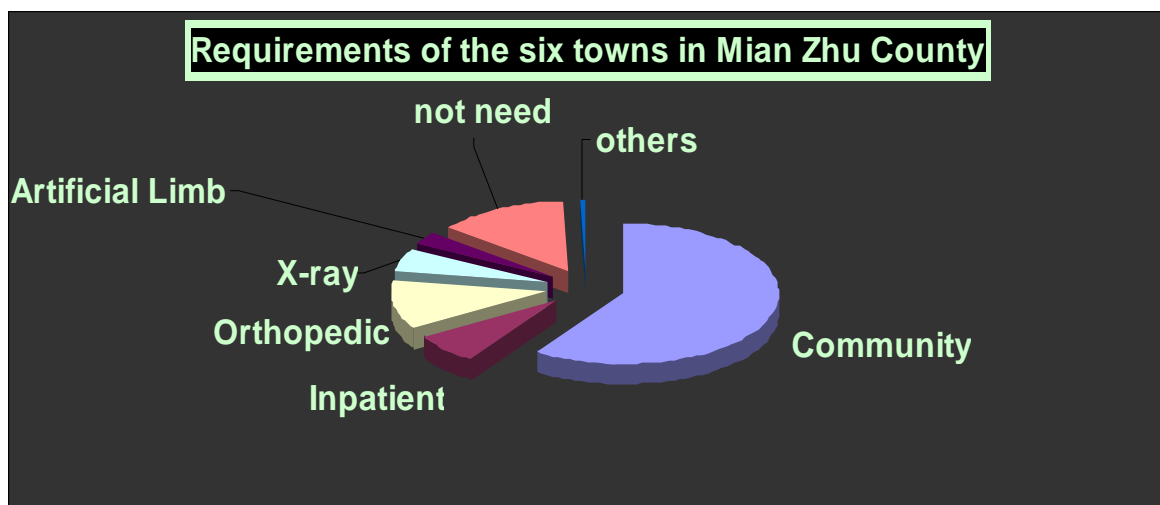
encouraged to use stories and cartoons which often lead to children opening up and expressing their inner feelings. These discussions are crucial in the healing process for a child.

The RCSC is also being provided with capacity building in the area of health in emergencies in order for the national society to better respond via a sectoral approach within health. Teams should be equipped to respond to public health needs in psychosocial support, sexual and reproductive health, nutrition and security, restoring family links, water and sanitation and many areas that are interlinked during a disaster.

Discussions and joint trainings between various other agencies and organizations working in the disaster area are being held in order to develop and apply common methodologies in the respective focus areas.

**Health coordination**

The International Federation is also in close coordination with Handicap International to assist survivors who had suffered severe injuries resulting in permanent disabilities and amputees. A base line assessment was recently conducted to map out the needs of the community in Jiulong and Zundao villages in Mianzhu county. The tables below show the breakdown of those requiring orthopaedic assistance:



	Jiulong	Zundao	Total	Explanation
Community	58	190	248	Patients who need community rehabilitation
Inpatients	5	30	35	Patients who need inpatient rehabilitation
Orthopaedic	16	21	37	Patients who need immediate or future orthopaedic service
X-ray	22	15	37	Patients who need new X-rays
Artificial Limbs	3	4	7	Patients who need artificial limb adjustments
Not needed	18	89	107	Patients who do not need rehabilitation
Others	1	0	1	Other conditions e.g. patients who need ophthalmologic service
Total	100	345	445	The total number surveyed

*Note: Assessments in Banqiao have not been conducted yet.*

The data above provides information for community-based health interventions for the disabled and injured who will need added support in health, livelihood projects and reconstruction. The disabled and severely injured, along with their families, will require disabled-friendly house designs, equipment and specific psychosocial support. Continuous referral and monitoring of the recovery of the survivors is being done by the RCSC, International Federation and Handicap International teams.

The International Federation’s health programme has also been in discussions with several government agencies, such as the Civil Affairs Department, Handicap People’s Department, Public Health Bureau, Agricultural Department, to develop a home care volunteer’s support system.

RCSC volunteers supported by the International Federation will provide home care support (medical, nursing assistance and companionship) to the elderly, identified as the most vulnerable and marginalized within the community, in the earthquake-affected areas. Those eligible to receive home care assistance include:

- Elderly people who do not have any family members to take care of them;
- Elderly people who are injured or sick but cannot be taken care of by their family members;
- Elderly people who are unable to care for themselves due to injury or illness;
- Elderly people who need special care or attention that cannot be provided by hospital staff due to lack of human resources and time.

Training will be provided for these RCSC volunteers in order for them to be able to perform simple rehabilitation activities under the guidance of handicap International physiotherapists. Psychosocial support training will also be given to these volunteers as these home visits can be a form of psychosocial support as well.

**Challenges:** Health and psychosocial support is designated as a lesser priority compared to the top priority of reconstruction. The various local authorities and other government agencies are all tied down with reconstruction work and have no time to attend to anything else other than reconstruction.

It is also difficult to reach out to the communities as many family members move out of the village to seek employment, leaving the women and children behind. Most of the women in the villages are heavily involved in farming and often, only children and the elderly are at home when home visits are conducted to follow up on health issues.



Red Cross Society of China and Austrian/French Red Cross water and sanitation emergency response unit (ERU) personnel working on a water tank to supply clean drinking water. International Federation.

### Water and sanitation, and hygiene promotion

**Objective 1 (Recovery Phase: 7 to 31 months):** To reduce vulnerability of earthquake-affected populations from water-borne diseases by improving access to safe water and sanitation facilities and empowering community based organizations on water governance.

Expected results	Activities Planned
<p>Communities have improved access to water and sanitation facilities according to Minimum Sphere Standards in three townships of Mianzhu County</p>	<p>1. Construction of water and sanitation facilities:</p> <ul style="list-style-type: none"> <li>• Consultation/information sessions at village level with local authorities, RCSC and Water Bureau</li> <li>• General agreement (MoU) between the Water Bureau, village representatives, RCSC and the International Federation on water supply systems</li> <li>• Design completed for gravity fed water supply systems</li> <li>• Tendering for drilling contractors, sanitation materials and</li> </ul>

	gravity-fed water supply system materials. <ul style="list-style-type: none"> <li>• Boreholes' drilling</li> <li>• Delivery of materials for water systems rehabilitation</li> <li>• Gravity-fed water supply system construction</li> <li>• Selection of households for sanitation facilities construction</li> <li>• Training in construction of latrines</li> <li>• Delivery of materials latrines</li> <li>• Construction of latrines</li> <li>• Technical monitoring</li> </ul>
<p><b>Expected results</b></p> <p>Communities and RCSC have skills and knowledge to identify problems and solutions involving water, sanitation and hygiene practice issues through PHAST</p>	<p><b>Activities Planned</b></p> <p>1. Creation of community-based water and sanitation management structures in collaboration with local health authorities:</p> <ul style="list-style-type: none"> <li>• Baseline survey (knowledge, attitude and practice)</li> <li>• Election of water and sanitation committees</li> <li>• Dissemination campaign</li> <li>• Community meetings</li> <li>• Monitoring</li> <li>• PHAST activities integrated under community-based health programme</li> </ul> <p>2. Development of RCSC and community water and sanitation knowledge and capacity</p> <ul style="list-style-type: none"> <li>• RCSC volunteers training on baseline survey (knowledge, attitude and practice)</li> <li>• Water committees and caretakers training</li> <li>• Village volunteers training in sanitation construction</li> </ul>

**Progress:** Meetings with the RCSC at headquarters and provincial level were held at Beijing and Chengdu. Discussions focused on water and sanitation advocacy and information sharing on the International Federation's water and sanitation strategies and policies as well as support for RCSC water and sanitation emergency response strategy development. The joint shelter, health and [water and sanitation assessment](#)<sup>5</sup>, and regular discussions with the Water Bureau also facilitated in the drafting of water and sanitation project plans. The water and sanitation delegate will end his mission in early December. While the recruitment for his replacement has begun, water and sanitation support will be provided by the water and sanitation delegate based at the zone office in Kuala Lumpur.

Some slight changes in the activities have been made since the revised appeal was issued to better elaborate the latest feedback and needs from the RCSC clearly. Water systems will be rehabilitated through gravity-fed water supply construction and activities will encompass the design of the gravity-fed water supply system to the tender of drilling contractors and water and sanitation materials.

## Livelihoods

**Objective 1: (Early Recovery Phase 6 to 12 months):** To provide vulnerable families with enough income/resources to survive winter and start reconstructing their houses.

<p><b>Expected results</b></p> <ul style="list-style-type: none"> <li>• Up to 15,000 vulnerable families receive support to generate their income or resources</li> <li>• The vulnerable families start livelihoods activity and reconstruction of their houses by the spring of 2009</li> </ul>	<p><b>Activities planned</b></p> <ul style="list-style-type: none"> <li>• Provide cash transfer programme training to the RCSC livelihoods volunteers</li> <li>• Provide vulnerable families support to remove the debris and the foundation</li> <li>• Provide unconditional cash grants to the most vulnerable families</li> <li>• Provide conditional cash grant to the vulnerable families to replace their livelihoods assets such as a livestock and livelihoods tools</li> <li>• Develop cash transfer policy for the RCSC</li> </ul>
--	--

<sup>5</sup> The water and sanitation assessment will be made available on Fednet in the first week of January 2009. FedNet is an intranet accessible to Red Cross Red Crescent Movement members only.

<b>(Reconstruction and Longer Term Recovery Phase: 13 to 31 months):</b>	
<b>Objective 2:</b> Vulnerable families have means (both skills and resources) to rehabilitate their livelihoods	
<b>Objective 3:</b> Vulnerable families have sustainable livelihoods and develop their livelihoods strategy.	
<b>Expected results</b>	<b>Activities planned</b>
<ul style="list-style-type: none"> <li>• The livelihoods needs and appropriate livelihoods interventions are developed by April 2009</li> <li>• Up to 4,000 vulnerable people receive appropriate training to have a stable income source</li> <li>• The necessary livelihoods assets are replaced or rehabilitated</li> <li>• The vulnerable families will have at least one stable income source</li> <li>• The people develop sustainable livelihoods</li> </ul>	<ul style="list-style-type: none"> <li>• Provide assessment training to the RCSC volunteers</li> <li>• Conduct integrated vulnerabilities and capacities assessment (VCA) in the target community</li> <li>• Develop middle and long term livelihoods projects</li> <li>• Identify potential areas for middle and long term projects.</li> <li>• Rehabilitation of livelihoods assets such as the rehabilitation of an irrigation channel or farmland</li> <li>• Capacity building of the vulnerable people through trainings such as vocational (construction-related and non-construction-related) trainings and business trainings</li> <li>• Improve livelihoods environment in the area through creation of potential manufacturing units (such as concrete hollow blocks), collective manufacturing units and/or making market links between small and micro enterprises and traders</li> <li>• Capacity building of the community and/or community-based organizations</li> <li>• Develop livelihoods contingency plan and include it in RCSC disaster contingency plans</li> </ul>

**Progress:** Based on initial assessments done in the field, the International Federation has identified short and long term opportunities to support vulnerable people through livelihoods options. In the short term, the International Federation’s quick impact project will provide those who are jobless with cash for work to clear debris and demolish the foundations of houses. Families who do not have the ability to join the cash for work initiative such as the elderly, women or disabled-headed families, will receive an unconditional cash grant. For families who have lost their livelihood assets, such as small scale farmers or skilled carpenters who lost their tools of the trade, a conditional cash grant will be provided.

A [livelihoods rapid assessment](#)<sup>6</sup> to finalize the quick impact project was conducted from 13 to 20 November with the Deyang and Mianzhu branch of the RCSC. The plan of action for this project has been developed and includes various options to improve the livelihoods of families most affected by the earthquake. The purpose and outcome of the quick impact project has been presented to the Deyang and Mianzhu Red Cross branches and the local authorities. Both the RCSC and the local authorities are keen to begin rolling out the project as it will provide immediate relief to those wanting to begin reconstruction but are unable to due to various factors. A lack of funds is the main reason reconstruction has not yet begun, with either people not qualifying for loans as they do not fulfil the criteria (for example, the elderly, disabled and households without a workforce which is still categorized as able bodied and/or below 40 years of age) or those who have lost their livelihoods and are not able to generate enough income for their basic needs.

Job descriptions for the technical counterparts for each sector have been completed for further discussion. Preparations are being made to roll out the project, beginning with the cash transfer programme training. This training will be conducted for both RCSC staff and volunteers and will enable them to begin implementing the project. A trainer has been identified and the training module is being developed.

**Challenges:** RCSC technical counterparts vital to the programme implementation’s success have yet to be identified. The project’s implementation system is still not in place as requirements and expectations have yet to be agreed on between the Red Cross and the relevant parties. Efforts are being made to finalise these matters as soon as possible, with memoranda of understanding with the government and between RCSC and the International Federation being drawn up.

**Disaster management**

**Progress:** Planning for the disaster preparedness centres will begin soon with RCSC and the International Federation meeting to discuss the size of the centres and prefecture and county locations sometime in mid-December.

<sup>6</sup> The livelihoods rapid assessment will be made available on Fednet in the first week of January 2009. FedNet is an intranet accessible to Red Cross Red Crescent Movement members only..

The International Federation, RCSC, its Hong Kong Red Cross branch and Australian Red Cross have agreed to form a community-based disaster preparedness working group to discuss RCSCs community-based disaster preparedness model and to share their experience in working on community-based disaster preparedness in the various provinces. The working group aims to standardize the training for community-based disaster preparedness and to better coordinate community-based disaster preparedness interventions in the earthquake affected provinces etc. The working group is schedule to meet on 14-15 January 2009 in Beijing.

<p><b>Objective 1 (Recovery Phase: 7 to 31 months):</b> To reduce the vulnerability of the population in Sichuan Province in areas where village home reconstruction is taking place by improving community capacity to plan and implement appropriate risk reduction initiatives addressing their local hazards.</p>	
<p><b>Expected results</b></p> <ul style="list-style-type: none"> <li>The affected Red Cross branches develop their capacities in community-based disaster management in future.</li> </ul>	<p><b>Activities Planned</b></p> <ul style="list-style-type: none"> <li>Identify their capacity and training needs to carry out community-based disaster preparedness</li> <li>Assure training modules address the specific needs of the communities</li> <li>Conduct training</li> </ul>
<p><b>Expected results</b></p> <ul style="list-style-type: none"> <li>The affected communities learn how to respond during earthquakes and other disasters</li> </ul>	<p><b>Activities Planned</b></p> <ul style="list-style-type: none"> <li>Identify the likely disasters and the risks in the community, people's knowledge of disasters including earthquakes, and the needs of evacuation drills through the modified vulnerabilities and capacities assessment (VCA)</li> <li>Identify areas for evacuation and the local authorities appointing these areas as official evacuation areas</li> <li>Develop evacuation drills with the communities and the relevant authorities</li> <li>Conduct awareness education on the evacuation system in the community</li> <li>Practise evacuation drills in the communities, schools and hospitals</li> </ul>
<p><b>Objective 2 (Recovery Phase: 7 to 31 months):</b> To reduce vulnerability of the population prior to the onset of natural disasters in affected areas of Gansu and Shaanxi provinces by improving community capacity to plan and implement appropriate risk reduction initiatives addressing their local hazards.</p>	
<p><b>Expected results</b></p> <p>Volunteers and staff of the RCSC in Gansu and Shaanxi can provide improved risk analysis, including assessment of local vulnerabilities and capacities for effective disaster risk reduction and mitigation measures</p>	<p><b>Activities Planned</b></p> <ul style="list-style-type: none"> <li>Establish criteria for village selection and identify target villages</li> <li>Agreements with local government for support to identified projects</li> <li>Conduct vulnerability and capacity assessment in selected communities</li> <li>Red Cross volunteers organised to formulate village community-based disaster preparedness (CBDP) committees</li> <li>Train facilitators at prefecture and county level in general community-based disaster preparedness concept and project monitoring and evaluation</li> <li>Train Red Cross facilitators at county and village level in community mobilization, community-based disaster preparedness, and defining mitigation measures</li> <li>Community-based disaster preparedness committees conduct basic disaster awareness rising in villages</li> <li>Develop or strengthen community early warning system</li> <li>Develop disaster risk reduction information, education and communication materials for school, promote disaster resistant school buildings</li> <li>CBDP committees conduct hazard/risk mapping and priority exercises</li> <li>CBDP committees prepare a village risk reduction plan and contingency plan</li> <li>Review village mitigation proposals and allocate grant</li> </ul>
<p><b>Expected results</b></p> <p>Targeted communities in Gansu and Shaanxi have capacity to monitor local disaster risks and use their risk analysis to develop the institutional disaster planning</p>	

	support based on guidelines <ul style="list-style-type: none"> <li>• Ensure proper technical quality assurance of physical mitigation measures</li> <li>• Mitigation plans are implemented in the villages</li> <li>• RCSC provincial branch staff conduct field trips to monitor and support the CBDP committees</li> </ul>
<b>Objective 3 (Recovery Phase: 7 to 31 months):</b> RCSC builds their capacity to effectively and quickly respond to emergencies in the future	
<b>Expected results</b> RCSC develops three disaster preparedness centres in the affected area	<b>Activities Planned</b> <ul style="list-style-type: none"> <li>• Location and purpose of disaster preparedness centres defined, including warehouses, ambulance and logistics services.</li> <li>• Three disaster preparedness centres constructed</li> <li>• Monitoring</li> </ul>

## Capacity building and organizational development

The International Federation continues to work closely with the RCSC to build capacity at all levels in responding to disasters. The health in emergencies and the water and sanitation workshops will both help to consolidate some of the lessons learned from the emergency phase of the earthquake response and strengthen RCSC staff and volunteers with valuable skills and knowledge.

The technical support provided by the delegates in the field has been useful in building capacities for counterparts and programme managers. Community-based programming is being introduced to the RCSC branches in a very integrated way through frequent visits by the delegates and RCSC team members working with RCSC to demonstrate how community-based programming can be integrated into their programming goals. The RCSC is also looking to continue developing disaster preparedness capacities not only in rural areas, but also urban areas, with specific issues related to urban living. The construction of disaster preparedness centres in the earthquake zone is seen as a priority of the RCSC headquarters as well. These centres are planned to be equipped with relief stocks, vehicles, and information technology equipment to enhance the capacity of the national society. Its strategic locations in the disaster-prone areas will help the national society respond more effectively and efficiently.

While capacity building activities have been built into each sector area throughout each phase of the earthquake response, there remain other important opportunities for the International Federation to support the RCSC in their own organizational development in addition to the construction of Red Cross disaster preparedness centres and the establishment of national emergency response teams that can be deployed in future disasters.

While shelter reconstruction is a key focus for the national society, needs in all four core areas of the International Federation's Strategy 2010 were also identified. This will enable the International Federation to work with and support RCSC in a more integrated way across a range of activities. Health and care, water and sanitation and livelihood needs are a major part of this revised appeal and will form an important priority for the future. It will also strengthen the national society by building the skills and capacities of existing and new staff and volunteers through trainings at branch and national levels as well as disaster simulation exercises.

Finally, the International Federation will support the RCSC in further strengthening their financial management, volunteer management and general programme management through this appeal. Analysis of existing systems and joint planning will identify how these programmes can be boosted. Workshops for relevant RCSC staff will be held to introduce and implement best practices and share experiences from the disaster.

### Health and care capacity building

#### I. Health in Emergencies

**Objective (Recovery Phase: 7 to 31 months):** To improve RCSC's capacity to provide health and psychosocial support to disaster affected communities.

Expected Results	Activities Planned
Develop human resources and equipment	<ul style="list-style-type: none"> <li>• Lesson learned workshop for field hospital deployment in Sichuan earthquake</li> <li>• Setting up of specialized health in emergencies teams as part of the RCSC national disaster response teams</li> <li>• Training in health in emergencies for RCSC staff and volunteers with relevant backgrounds</li> <li>• Training and disaster simulation exercises on deployment of field hospital unit for RCSC staff and volunteers</li> <li>• Attendance of emergency response unit trainings for two RCSC staff (by end of 2009)</li> </ul>

**Progress:** A workshop piloting the new health in emergencies model was held in Beijing in October and, although it was open to participants from all over the East Asia region, a majority of the participants came from China, specifically from the earthquake area or professionals who are being trained to respond to China's natural disasters in the future. It gave hands-on experiences with handling specific scenarios and case studies to gain confidence in responding to health-related issues in disasters.

The RCSC participants that had served in the operations performed different roles during the emergency phase; including ambulance teams, medical doctors serving the field hospitals, health personnel supporting the rescue operations and field coordinators. They shared their experiences and lessons learned during the emergency phase of the earthquake, which was the first time that the national society had been actively involved in a disaster response of this scale.

These participants actively participated in the training because they were interested to fully understand and appreciate the dynamic and holistic role of health in emergencies. There is a renewed commitment from the participants for more capacity building in their own prefectures and provinces due to their deepened knowledge that disaster response is not resigned solely to relief distributions or medical services. The participants are actively translating the materials from the workshop, supplementing further materials from their experiences and making it more localised for future trainings at the prefecture or provincial level. These local trainings are planned to begin in February, 2009.

### Water and sanitation capacity building

II. Water and sanitation and hygiene in emergencies	
<b>Objective (Recovery Phase: 7 to 31 months):</b> To provide technical assistance and training to RCSC in water and sanitation for emergencies and post-emergency situations.	
Expected results	Activities Planned
RCSC has the relevant skills and capacity at national level to deploy water and sanitation emergency response units domestically	RCSC technical water sanitation development and training <ul style="list-style-type: none"> <li>• Water and sanitation workshop</li> <li>• Water and sanitation training for RCSC water and sanitation programme manager</li> <li>• National water and sanitation in emergencies training (emergency response units)</li> </ul>

**Progress:** A water and sanitation workshop was organized in Chengdu by the RCSC and the International Federation water and sanitation delegate in early November to strengthen RCSC knowledge and shared learning about water and sanitation in emergencies. International Federation strategies, policies and tools were highlighted, with lessons learned and earthquake recovery plans discussed in detail. Participants included RCSC staff and volunteers who were active in the operation of the emergency response units, as well as key technical experts who will be involved in the establishment of RCSC's future emergency response unit teams.

A concept note was produced to evaluate the water and sanitation ERUs deployment during the emergency phase and provided some recommendations to strengthen RCSC water and sanitation capacity for emergency and non-emergency situations.



RCSC staff and volunteers participated in a water and sanitation workshop to learn about water and sanitation in emergencies. Many of the participants were involved during the earthquake relief operations and shared lessons learned during the earthquake operations. International Federation.

## Coordination and partnerships

The International Federation has been and will continue to support the RCSC in coordinating Red Cross Red Crescent Movement efforts. At the request of the RCSC leadership, the International Federation will continue to play an important role in coordinating all Red Cross Red Crescent Movement support to the earthquake operations. The RCSC has requested that the Red Cross Red Crescent Movement take a unified approach towards responding to the needs of Red Cross beneficiaries and supporting the RCSC throughout the response.

Two partnership meetings held for support to the RCSC earthquake operations, the first in Xi'an, Shaanxi province in July, and the second in Beijing in October, have enabled the RCSC, the International Federation and partners to summarize activities to date, understand technical recommendations and agree upon priority areas for plans of action. It has also enabled the RCSC to have a clearer understanding of partner interest and funding potential. These meetings are supplemented with frequent communications with both multilateral and bilateral partners. The next partnership meeting is tentatively planned for February 2009 in Chengdu.

An Advisory Committee comprising of members from RCSC, the International Federation and partner national societies is being formed to advise on major issues related to the implementation of the reconstruction programme and take into consideration interests of the RCSC and all partners.

The RCSC is still regularly involved in high level coordination meetings with government authorities, and has been closely involved in discussions with the Ministry of Construction regarding reconstruction planning.

Coordination efforts between the International Federation and Handicap International have thus far been positive. This collaboration is valued by the relevant parties as it is being seen as providing better support to the elderly and disabled who are the most vulnerable and marginalised by the earthquake.

The coordination efforts between the International Federation operations support team, the RCSC at all levels and relevant official agencies have been positive and have helped facilitate a rapid response. In the past few months, close contact between RCSC headquarters in Beijing and Chengdu has been critical in formulating plans and action steps towards reconstruction and recovery.

## Capacity of the Red Cross Society of China

The Red Cross Society of China was founded in 1904, becoming one of the first members of the International Federation in 1919. The mission of the RCSC is reflected in its law, acknowledged by the central and provincial governments, and is reflective of the good working relationship with the government, particularly in the fields of relief and health activities. Today with over 21 million members, a headquarters in Beijing (217 staff) and

established provincial and municipality branches (5,959 staff) corresponding to state administrative units, the RCSC is well placed to act as a valuable auxiliary partner to the government in times of disaster.

In recent years, China has experienced many earthquakes, during which RCSC has conducted key relief activities. In addition, the RCSC has responded to massive disasters caused by typhoons, torrential rains and snow in the past few years. Through these experiences, the RCSC has improved its response mechanisms to deliver assistance to affected individuals. When disaster strikes, RCSC branches at the provincial and local levels immediately launch local appeals for funding and collect items such as warm clothing to assist those affected by disasters.

The RCSC maintains a nationwide network of six regional disaster preparedness centres. These are essentially warehouses with stocks of relief supplies, but they also serve as focal points for training staff in disaster management, including logistics, report writing skills and first aid, tailored to different kinds of disasters.

### **Capacity of International Federation**

The International Federation's East Asia regional office in Beijing is comprised of a head of office and specialist delegates in disaster management, health and care, planning, monitoring, evaluation and reporting, media and communications, finance and skilled local staff. The regional office is backed by a team of staff in the International Federation's Asia Pacific zone office in Kuala Lumpur, and relevant technical departments in Geneva.

The International Federation's operations support team in Chengdu, the capital of Sichuan province, provides support as necessary to the RCSC to implement the operation successfully. The International Federation will keep approximately 12 delegates and a team of local staff in Chengdu to support the considerable number of national society staff and volunteers in the implementation of the programmes. The team consists of a head of office, technical delegates in shelter reconstruction, health and psychosocial care, water and sanitation, recovery/livelihoods, logistics, finance, and reporting. A strong team of local staff provides further support to the team and the local RCSC staff and volunteers.

The Chengdu office coordinates with the RCSC office in Sichuan, the local authorities and partner national society representatives to manage operation programme activities. The regional office in Beijing will continue to coordinate with the RCSC headquarters for Gansu and Shaanxi programming. Furthermore, the Beijing office will also continue to hold regular meetings with the RCSC senior management, and involve the Advisory Committee when appropriate. A focal point coordinating and holding the overall responsibility for the Federation-supported programmes will be appointed and posted in Beijing.

### **Communications – Advocacy and Public Information**

The appointment of a communications delegate in September 2008 has given greater continuity and focus to communications work; the person recruited had been working with the International Federation's East Asia regional office over the past year as a communications consultant, supporting information work on a number of issues, but the creation of a full-time communications post means that the International Federation has been able to position itself much more strongly in creating media opportunities to bring more visibility to the organization's work.

This has been particularly marked in the Sichuan earthquake operation. For the six-month commemoration, the International Federation's media strategy focused on the human interest dimension of psychosocial support programme work. This drew substantial coverage from media outlets including BBC, CBC, Al Jazeera International, NHK, AFP, Reuters and Radio Australia.

There is continuing media interest, with several media organizations planning follow-up coverage of psychosocial or livelihoods work. "Coping with Crisis," the magazine published by the International Federation's Psychosocial Reference Centre in Copenhagen, is also planning to publish an article on the psychosocial work being undertaken by the RCSC, supported by the International Federation in the earthquake zone.

## How we work

**All International Federation assistance seeks to adhere to the [Code of Conduct for the International Red Cross and Red Crescent Movement and Non-Governmental Organizations \(NGOs\) in Disaster Relief](#) and is committed to the [Humanitarian Charter and Minimum Standards in Disaster Response \(Sphere\)](#) in delivering assistance to the most vulnerable.**

The International Federation's activities are aligned with its Global Agenda, which sets out four broad goals to meet the Federation's mission to "improve the lives of vulnerable people by mobilizing the power of humanity".

### Global Agenda Goals:

- Reduce the numbers of deaths, injuries and impact from disasters.
- Reduce the number of deaths, illnesses and impact from diseases and public health emergencies.
- Increase local community, civil society and Red Cross Red Crescent capacity to address the most urgent situations of vulnerability.
- Reduce intolerance, discrimination and social exclusion and promote respect for diversity and human dignity.

## Contact information

**For further information specifically related to this operation please contact:**

- Red Cross Society of China: Mr. Wang Xiaohua, director of external relations department; email: [rcsc@chineseredcross.org](mailto:rcsc@chineseredcross.org); phone: +86.10.6404.8366, fax +86.10.6402.9928.
- East Asia regional office in China: Mr. Carl Naucler, head of regional office, mobile: +86 10 6532 7162, email: [carl.naucler@ifrc.org](mailto:carl.naucler@ifrc.org); and Sheila Thornton, head of Chengdu office, mobile: +86 136 8849 7505, email: [sheila.thornton@ifrc.org](mailto:sheila.thornton@ifrc.org)
- Federation zone office in Kuala Lumpur:
  - Alistair Henley, head of zone office, phone: +6012 203 8254, email: [alistair.henley@ifrc.org](mailto:alistair.henley@ifrc.org),
  - Amy Gaver, head of disaster management unit, mobile: +6012 220 1174, email: [amy.gaver@ifrc.org](mailto:amy.gaver@ifrc.org)
  - Jeremy Francis, regional logistics coordinator, phone: +603 9207 5753, fax: +603 2168 8573, email: [jeremy.francis@ifrc.org](mailto:jeremy.francis@ifrc.org)
  - For pledges of funding: Penny Elghady, resource mobilization and PMER coordinator, phone: +603 9207 5775, email: [penny.elghady@ifrc.org](mailto:penny.elghady@ifrc.org)
  - For media enquiries: Francis Markus (Chengdu), Communications delegate, mobile: +86 1391 0096 892, email : [francis.markus@ifrc.org](mailto:francis.markus@ifrc.org); or Jason Smith (KL), Zone communications manager, mobile: +6012 387 0829, email: [jason.smith@ifrc.org](mailto:jason.smith@ifrc.org)

***<Annexes, revised budget, interim financial report and map of affected areas below;  
click here to return to the title page>***

## Annex 1: Distribution of Quilts (1st batch) and Hygiene Kits

			Hygiene kits	Quilts
PROVINCE	PREFECTURE	COUNTY	Qty	Qty
Gansu	Long Nan	KANG XIAN	2,000	2,000
Gansu	Long Nan	XI HE	2,000	2,000
Gansu	Long Nan	WEN XIAN	2,000	2,000
Gansu	Long Nan	LI XIAN	1,000	2,000
Gansu	Long Nan	CHENG XIAN	2,000	3,200
Gansu	Long Nan	LIANG DANG	1,000	2,000
Gansu	Long Nan	TAN CHANG	2,000	3,000
Gansu	Long Nan	WU DU	2,000	3,000
Gansu	Tian Shui	ZHANG JIA CHUAN	2,000	-
Gansu	Tian Shui	MAI JI	1,500	-
Gansu	Tian Shui	QIN AN	2,000	-
Gansu	Gan Nan	ZHOU QU	2,000	2,200
Gansu	Gan Nan	DIE BU	2,000	2,000
Gansu	Ping Liang	JING NING	1,500	1,600
Shaanxi	Han Zhong	NIQIANG	5,000	5,000
Shaanxi	Han Zhong	LVYANG	5,000	5,000
Shaanxi	Han Zhong	MIAN XIAN	5,000	5,000
Sichuan	Deyang	SHIFANG	6,000	6,000
Sichuan	Deyang	MIANZHU	6,000	6,000
Sichuan	Guangyuan	QINGCHUAN	6,000	6,000
Sichuan	Guangyuan	LIZHOU	4,000	4,000
Sichuan	Myanyang	ANXIAN	2,500	2,500
Sichuan	Myanyang	BEICHUAN	2,500	2,500
Sichuan	Myanyang	JIANGYOU	2,500	2,500
Sichuan	Myanyang	PINGWU	2,500	2,500
Sichuan	Myanyang	YOUXIAN	2,000	2,000
Sichuan	Chengdu	DUJIANGYAN	5,000	5,000
Sichuan	Chengdu	PENGZHOU	5,000	5,000
Sichuan	Aba	LIXIAN	5,000	5,000
Sichuan	Aba	MAOXIAN	5,000	5,000
Sichuan	Aba	WENCHUAN	2,000	2,000
Sichuan	Ya`an	HANYUAN	3,000	3,000
Sichuan	Ya`an	BAOXING	1,000	1,000
<b>Totals</b>			<b>100,000</b>	<b>100,000</b>

Annex 2: Distribution of tents

Province	Prefecture	Qty
Sichuan	Aba	11,096
	Deyang	23,007
	Guangyuan	14,960
	Mianyang	12,742
	Yaan	4,218
		<b>66,023</b>
Shaanxi	Ankang	1542
	Baoji	1400
	Ganyang	1500
	Hanzhong	2500
	Shangluo	1084
	Xi'an	2770
		<b>10,796</b>
Gansu	Dingxi	1000
	Gannan	602
	Lanzhou	3250
	Longnan	5533
	Pingliang	3813
	Qingyang	4554
	Tianshui	6063
		<b>24,815</b>
<b>Total</b>		<b>101,634</b>

### Annex 3: Distribution of Quilts (2nd batch)

Province	Prefecture	County	Quantity	Total
Sichuan	Mianyang	Beichuan	12,000	
		Anxian	12,000	
	Guangyuan	Pingwu	12,000	
		Jiangyou	12,000	
		Qingchuan	16,000	
		Jiange	27,000	
		Chaotian	27,000	
		Lizhou	27,000	
			<b>145,000</b>	
Shaanxi	Han Zhong		10,000	<b>10,000</b>
Gansu	Qingyang		10,000	
		Gan Nan	7,000	
	Ping Liang		10,000	
		Baiyin	Huining	
				<b>30,000</b>
Chong Qing	Hechuan		2,000	
	Bei Pei		1,500	
	Rong Chang		1,500	
				<b>5,000</b>
Yun Nan	Zhao Tong	Sui Jiang	1,000	
		Yong Shan	4,000	
				<b>5,000</b>
Ning Xia			5,000	<b>5,000</b>
<b>TOTAL</b>				<b>200,000</b>

**Annex 4: DISTRIBUTION OF FOOD PARCELS**

Province	Prefecture	Counties	Qty	Districts	Qty	Total
GANSU	Long Nan	Wen	4,000	Wu Du	4,000	
	Gan Nan	Zou Qu	4,000			
	Tian Shui	Wu Shan	4,000			
		Zhang Jiao Chuan	4,000			
			<b>16,000</b>		<b>4,000</b>	<b>20,000</b>
SHAANXI	Hang zhong	Lueyang	2,000			
		Chenggu	2,000			
	Bao Ji	Zhen Ba	2,000			
		Chen Cang	2,000			
	Qianyang	2,000				
			<b>10,000</b>			<b>10,000</b>
SICHUAN	Guan Yuan	Qing Chuan	3,000	Chao Tian	3,000	
		Hong Yuan	5,000		Li Zhou	
	A'ba	An	3,000			
		Beichuan	4,000			
		Pingwu	3,000			
	Deyang	Rang Tang	5,000	Yu Cheng	3,000	
		Mianzhu	6,000			
		Qzhong Jing	3,000			
	Yaan	Luo Jiang	1,000			
		Ba Zhong	2,000			
Nan Jiang		2,000				
Chengdu	Tong Jiang	1,000				
	Ying Jing	3,000				
	Dujiangyan city	4,000				
Nanchong	Peng Zhou	4,000				
	Chong Zhou	2,000				
	Shi Mian	4,000				
	Xi Chong	2,000				Shun Qing
				Jia Ling	1500	
			<b>57,000</b>		<b>13,000</b>	<b>70,000</b>
<b>TOTAL</b>						<b>100,000</b>

Annex 5: Details of support provided by the Government and the Red Cross  
for "Owner Driven" Shelter Reconstruction.

Owner-Driven Reconstruction Model			
Input	Home Owner	Government	Red Cross
Policy Development	<ul style="list-style-type: none"> <li>Learns about and understands policy</li> </ul>	<ul style="list-style-type: none"> <li>Develops Reconstruction Policy</li> </ul>	<ul style="list-style-type: none"> <li>Develops and disseminates user-friendly information on policy to homeowners</li> </ul>
Regulations & Guidelines	<ul style="list-style-type: none"> <li>Learns about and understands regulations and guidelines</li> </ul>	<ul style="list-style-type: none"> <li>Develops Regulations and Guidelines and ensures they are followed</li> </ul>	<ul style="list-style-type: none"> <li>Develops and disseminates user-friendly information on regulations and guidelines to homeowners</li> <li>Provides training, workshops and one-on-one advice on regulations and guidelines to homeowners and community as needed</li> </ul>
Technical Support	<ul style="list-style-type: none"> <li>Applies to government to assess damage of home and feasibility of reconstruction on same location</li> <li>Applies to government for inclusion in government reconstruction cash assistance program</li> <li>Hires contractor if unable to build home by self</li> <li>Learns about and understands technical components of building an earthquake resistant home</li> <li>Seeks out advice and technical input from government and Red Cross support teams if needed</li> </ul>	<ul style="list-style-type: none"> <li>Assess damage of homes/safety of location for rebuilding</li> <li>Selects and allocates new site if current site not safe for rebuilding</li> <li>Develops and provides free earthquake resistant home designs in various sizes</li> <li>Provides training to government staff on technical guidance and monitoring of home reconstruction</li> <li>Designates monitoring teams in villages responsible for following reconstruction and releasing government funds to homeowners</li> <li>Provides infrastructure (roads, electricity, water supply, etc.)</li> </ul>	<ul style="list-style-type: none"> <li>Provides advice on earthquake resistant construction techniques and material usage at the household level through daily/weekly visits from International Federation of Red Cross/RCSC technical officers</li> <li>Reviews current architectural designs for village homes in selected townships (if needed)</li> <li>Provides additional architectural designs for smaller homes (if needed)</li> <li>Provides additional input in designs for handicap-access homes and connects homeowners that have accessibility issues with NGOs specializing in this type of issues (via Health Programme)</li> <li>Reviews and upgrades existing "Standard Construction Contract for Rural Residential Buildings" to provide common protective measures for home owners</li> <li>Provides training, information and individual consultation on contracts for homeowners</li> <li>Provides construction skills training to villagers (if needed)</li> <li>Provides additional support in rehabilitating water systems and assistance with sanitation facilities for vulnerable families (via Water &amp; Sanitation Programme)</li> </ul>
Monitoring & Quality Control	<ul style="list-style-type: none"> <li>Daily on-site monitoring of construction work and ensuring that it meets guidelines</li> <li>Purchases materials that meet technical guidelines</li> <li>Provides access to home for government and RC monitoring teams</li> <li>If monitoring shows that</li> </ul>	<ul style="list-style-type: none"> <li>Ensures that houses are built according to earthquake resistant guidelines</li> <li>Supervises that homes being built meet technical guidelines</li> <li>Ensures that materials available to homeowners meet technical guidelines through quality monitoring and testing of key construction materials</li> </ul>	<ul style="list-style-type: none"> <li>Supplementary monitoring that homes being built meet technical guidelines</li> <li>Supplementary quality monitoring/testing of key construction materials as needed</li> <li>Monitoring of level of construction and verification of time to transfer installation of International Federation of Red Cross/RCSC cash</li> </ul>

	<p>homeowner is not meeting requirements, homeowner adjusts plans and implementation to be up to code and continue to qualify for assistance</p>	<ul style="list-style-type: none"> <li>Supervises level of construction and verifies time to transfer installment of government cash grants</li> </ul>	<p>grant</p>
Financial	<ul style="list-style-type: none"> <li>Selects size &amp; design of home based on family needs, resources &amp; capacity</li> <li>Provides labor or contracts laborers</li> <li>Hires contractor if needed</li> <li>Purchases appropriate materials</li> <li>Provides additional cash inputs</li> <li>Takes out low interest government loan if needed</li> </ul>	<ul style="list-style-type: none"> <li>Provides cash grant based on family size and vulnerability (16,000 - 24,000 RMB)</li> <li>Price capping on materials</li> <li>Special suppliers receive cash grants from government and sell quality materials cheaper to HHs</li> <li>Provides low interest loans</li> <li>Provides free building permits</li> </ul>	<ul style="list-style-type: none"> <li>Provides cash grant (CNY 20,000/homeowner)</li> <li>Removes rubble of previous home (via Livelihoods Programme)</li> <li>Provides unconditional cash grants to most vulnerable families to assist with their immediate and winter survival needs (via Livelihoods Programme)</li> <li>Provides conditional cash grants to most vulnerable families to re-establish livelihoods contributing to funds available for home reconstruction (via Livelihoods Programme)</li> <li>Provides additional support for long term livelihoods recovery (training, irrigation channel repair, etc.) (via Livelihoods Programme)</li> </ul>
Public Awareness/ Home Owner Education	<ul style="list-style-type: none"> <li>Participates in regular village meetings with Red Cross teams to discuss program, receive technical input and bring challenges to the attention of Red Cross teams and local authorities</li> <li>Attends trainings provided by Red Cross team (as needed)</li> </ul>	<ul style="list-style-type: none"> <li>Supports Red Cross teams in their work and promotes the dissemination of educational materials to local communities</li> <li>Participates in regular village meetings with home owners and Red Cross teams to support reconstruction efforts and address needs of homeowners</li> </ul>	<ul style="list-style-type: none"> <li>Needs-based trainings and workshops for homeowners on RC programs, government reconstruction program, earthquake resistant guidelines and requirements, construction techniques, contracts, etc.</li> <li>User friendly information on Policy, Guidelines, Regulations</li> <li>User friendly information on designs, standards, considerations to make home earthquake resistant</li> <li>User friendly information on construction contracts, template contracts, etc.</li> <li>Posters, brochures, models of architectural drawings</li> <li>Information Points at village level where above info is available</li> <li>Possibly information on loans, government/Red Cross cash contributions, etc.</li> <li>Information disseminated via technical officers visits to homes, workshops, trainings, in-office consultations and regular village meetings with homeowners and local authorities</li> </ul>

**REVISED APPEAL BUDGET SUMMARY**

Annex 6

**CHINA : SICHUAN EARTHQUAKE****MDRCN003**

	<b>ORIGINAL</b>	<b>REVISED</b>	<b>VARIANCE</b>
<b><u>RELIEF NEEDS</u></b>			
Shelter (Tents)	28,000,000	24,610,307	-3,389,693
Construction Materials (Housing)	17,000,000	81,841,090	64,841,090
Clothing & Textiles	1,000,000	3,171,287	2,171,287
Food	5,000,000	3,500,000	-1,500,000
Water & Sanitation	120,000	2,121,383	2,001,383
Medical & First Aid	740,000	845,424	105,424
Teaching Materials	500,000		-500,000
Utensils & Tools	3,500,000		-3,500,000
Other Supplies & Services	11,200,000	9,406,822	-1,793,178
<b>Total Relief Needs</b>	<b>67,060,000</b>	<b>125,496,313</b>	<b>58,436,313</b>
<b><u>CAPITAL EQUIPMENT</u></b>			
Land & Buildings		2,550,000	2,550,000
Vehicles Purchase	90,000	260,750	170,750
Computers & Telecom Equipment	40,000	59,585	19,585
Office/Household Furniture & Equip.	120,000	123,279	3,279
<b><u>TRANSPORT, STORAGE &amp; VEHICLES</u></b>			
Storage - Warehouse		28,775	28,775
Distribution & Monitoring (including Air Transport)	18,000,000	11,193,678	-6,806,322
Transport & Vehicles Costs	350,000	1,054,089	704,089
<b><u>PERSONNEL</u></b>			
International Staff	2,130,000	4,354,407	2,224,407
National Staff	428,000	4,060,688	3,632,688
National Society Staff	48,000	1,620,736	1,572,736
Consultants	108,000	192,343	84,343
<b><u>WORKSHOPS &amp; TRAINING</u></b>			
Workshops & Training	150,000	2,960,857	2,810,857
<b><u>GENERAL EXPENSES</u></b>			
Travel	600,000	511,703	-88,297
Information & Public Relations	108,000	1,101,273	993,273
Office running costs	360,000	298,436	-61,564
Communication Costs	246,000	190,362	-55,638
Professional Fees	319,400	100,032	-219,368
Financial Charges	9,000	5,000	-4,000
Other General Expenses	288,000	78,409	-209,591
<b><u>PROGRAMME SUPPORT</u></b>			
Programme Support - PSR (6.5% of total)	6,288,274	10,861,654	4,573,380
<b>Total Operational Needs</b>	<b>29,682,674</b>	<b>41,606,055</b>	<b>11,923,381</b>
<b>Total Appeal Budget (Cash &amp; Kind)</b>	<b>96,742,674</b>	<b>167,102,368</b>	<b>70,359,694</b>
<b>(Less) : Available Resources</b>		<b>84,442,730</b>	
<b>Net Request</b>	<b>96,742,674</b>	<b>82,659,638</b>	

**REVISED APPEAL BUDGET SUMMARY**  
**CHINA : SICHUAN EARTHQUAKE**

Annex 7  
MDRCN003

<b>Emergency Relief Phase</b>		<b>Total cost CHF</b>
<b>Emergency Shelter</b>		<b>46,029,990</b>
- Tents & Air Transport	34,721,435	
- Base Camp	1,082,550	
- Quilts	2,883,861	
- Hygiene kits	3,842,144	
- Food parcels	3,500,000	
<b>Health &amp; Care</b>		<b>251,959</b>
- First Aid Kits	251,959	
<b>Watsan &amp; ERU</b>		<b>3,938,713</b>
<b>Other costs</b>		<b>3,659,186</b>
- Personnel, Training, Vehicles & Admin	3,659,186	
<b>Total Expenditure</b>		<b>53,879,848</b>

<b>Recovery Phase</b>	<b>No.of Units</b>	<b>Cost per unit</b>	<b>Total cost</b>	<b>Total cost CHF</b>
<b>Shelter reconstruction (Housing)</b>				<b>89,695,409</b>
- Village Home Construction (4 townships) (includes contribution of materials for each family, monitoring & personnel costs)	22,540	3,979	89,695,409	
<b>Health and Care &amp; Psychosocial support</b>				<b>2,765,202</b>
- Psychosocial Support & Awareness (IEC)	21 Villages		1,322,000	
- Community Based Health			616,800	
- Health in Emergency (training & personnel costs)			826,402	
<b>Water and Sanitation &amp; Hygiene promotion</b>				<b>3,715,976</b>
- Rehabilitation of water and sanitation facilities	5,669	387	2,193,903	
- Personnel, Training, Logistics & other costs			1,522,073	
<b>Livelihoods</b>				<b>8,349,120</b>
- Unconditional Cash Grant/Vulnerable families	5,400	618	3,337,200	
- Cash Grant to replace livelihoods assets	9,000	256	2,304,000	
- Training & workshops, Personnel & other costs			2,707,920	
<b>Disaster Management</b>				<b>4,438,503</b>
- DP Centers	3	946,168	2,838,503	
- Training & workshops, Personnel & other costs	4	400,000	1,600,000	
<b>Coordination &amp; Management</b>				<b>4,258,310</b>
- Capital Equipment			172,373	
- Transport, Storage & vehicles			179,650	
- Personnel (delegates, staff & consultants)			2,596,800	
- Training & workshops			266,790	
- General expenses (office running costs & travel)			1,042,697	
<b>Total Budget</b>				<b>113,222,520</b>
<b>TOTAL REVISED BUDGET</b>				<b>167,102,368</b>

\*\* NOTE : Programme Support Recovery (PSR) has been apportioned under each sector.

# International Federation of Red Cross and Red Crescent Societies

MDRCN003 - China - Sichuan Earthquake

Interim Financial Report

Selected Parameters	
Reporting Timeframe	2008/1-2008/11
Budget Timeframe	2008/5-2010/4
Appeal	MDRCN003
Budget	APPEAL

All figures are in Swiss Francs (CHF)

## I. Consolidated Response to Appeal

	Goal 1: Disaster Management	Goal 2: Health and Care	Goal 3: Capacity Building	Goal 4: Principles and Values	Coordination	TOTAL
<b>A. Budget</b>	<b>167,102,368</b>					<b>167,102,368</b>
<b>B. Opening Balance</b>	<b>0</b>					<b>0</b>
<b>Income</b>						
<u>Cash contributions</u>						
<i>American Government</i>	520,000					520,000
<i>American Red Cross</i>	10,432,547					10,432,547
<i>Australian Red Cross</i>	5,891,300					5,891,300
<i>Australian Red Cross (from Australian Government)</i>	995,500					995,500
<i>Austria - Private Donors</i>	485					485
<i>Belgium Red Cross (Flanders)</i>	93,682					93,682
<i>Belgium Red Cross (Flanders) (from Belgian Federal Government)</i>	36,523					36,523
<i>Brazil - Private Donors</i>	6,373					6,373
<i>British Red Cross</i>	2,850,396					2,850,396
<i>Bulgarian Red Cross</i>	5,000					5,000
<i>Cambodia - Private Donors</i>	170					170
<i>Canada - Private Donors</i>	5,200					5,200
<i>Canadian Red Cross</i>	5,359,079					5,359,079
<i>Canadian Red Cross (from Canadian Government)</i>	17,816,762					17,816,762
<i>China - Private Donors</i>	32					32
<i>Czech Red Cross</i>	10,202					10,202
<i>Danish Red Cross</i>	10,749					10,749
<i>Danish Red Cross (from Danish Government)</i>	670,030					670,030
<i>DELL Direct Giving Campaign</i>	89,867					89,867
<i>Estonia Red Cross</i>	4,035					4,035
<i>Finnish Red Cross</i>	57,319					57,319
<i>France - Private Donors</i>	2,668					2,668
<i>German Red Cross</i>	44,121					44,121
<i>Germany - Private Donors</i>	121					121
<i>Germany - Private Donors (from Switzerland - Private Donors)</i>	100					100
<i>Great Britain - Private Donors</i>	22,503					22,503
<i>Greek Government</i>	327,000					327,000
<i>IATA</i>	8,650					8,650
<i>Icelandic Red Cross (from Icelandic Government)</i>	109,646					109,646
<i>ICRC (from Unidentified donor)</i>	153					153
<i>Indian Red Cross</i>	27,409					27,409
<i>India - Private Donors</i>	5,040					5,040
<i>Indonesia - Private Donors</i>	2,209					2,209
<i>Infineum UK Ltd</i>	70,413					70,413
<i>Ireland - Private Donors</i>	1,256					1,256
<i>Irish Government</i>	1,627,000					1,627,000
<i>Irish Red Cross</i>	283,001					283,001
<i>Italian Govt Bilateral Emergency Fund</i>	1,612,150					1,612,150
<i>Japanese Government</i>	1,785,000					1,785,000
<i>Japanese Red Cross</i>	5,000,079					5,000,079
<i>Japan - Private Donors</i>	3,150					3,150
<i>Lithuanian Red Cross</i>	976					976
<i>Luxembourg Government</i>	104,900					104,900
<i>Malaysian Red Crescent</i>	10,546					10,546

# International Federation of Red Cross and Red Crescent Societies

MDRCN003 - China - Sichuan Earthquake

Interim Financial Report

Selected Parameters	
Reporting Timeframe	2008/1-2008/11
Budget Timeframe	2008/5-2010/4
Appeal	MDRCN003
Budget	APPEAL

All figures are in Swiss Francs (CHF)

Malaysia - Private Donors	1,780			1,780
Mauritius Red Cross	191			191
Monaco Red Cross	114,914			114,914
Netherlands - Private Donors	8,335			8,335
Netherlands Red Cross	510,471			510,471
Netherlands Red Cross (from Netherlands Government)	813,500			813,500
New York Office (from Alcatel Lucent)	149,625			149,625
New York Office (from Heinz)	99,750			99,750
New York Office (from Hospira)	99,750			99,750
New York Office (from Huber)	49,875			49,875
New York Office (from Jones apparel Group)	21,804			21,804
New York Office (from Kraft Foods)	157,500			157,500
New York Office (from United States - Private Donors)	39,085			39,085
New Zealand Red Cross	235,893			235,893
New Zealand Red Cross (from New Zealand Government)	664,365			664,365
Nigeria private donors	1,024			1,024
Norwegian Red Cross	83,254			83,254
Office of the Representative of the Dalai Lama	52,000			52,000
On Line donations	756,506			756,506
Qatar Red Crescent	59,400			59,400
Royal & Sun Alliance	12,714			12,714
Russia - Private Donors	2,686			2,686
Singapore - Private Donors	9,975			9,975
Singapore Red Cross	114,048			114,048
Slovenia Government	161,500			161,500
South Africa Government	193,050			193,050
South Africa - Private Donors	361			361
Spain - Private Donors	1,985			1,985
Sri Lanka Red Cross	3,250			3,250
Stavros Niarchos Foundation	260,000			260,000
Swedish - Private Donors	32			32
Swedish Red Cross (from Swedish Government)	342,400			342,400
Switzerland - Private Donors	27,486			27,486
Thailand - Private Donors	5,200			5,200
Total	51,000			51,000
Turkish Red Crescent	5,264			5,264
United Arab Emirates - Private Dono	1,115			1,115
United Arab Emirates Red Crescent	20,981			20,981
United States - Private Donors	144,114			144,114
United Technologies	262,500			262,500
United Technologies (from United States - Private Donors)	5,250			5,250
VERF/WHO Voluntary Emergency Relief	4,400			4,400
<b>C1. Cash contributions</b>	<b>61,451,673</b>			<b>61,451,673</b>

## Outstanding pledges (Revalued)

Cook Islands Red Cross	66			66
Finnish Red Cross	386,877			386,877
Finnish Red Cross (from Finnish Government)	742,804			742,804
German Red Cross	124,420			124,420
Irish Red Cross	72,733			72,733
Japanese Red Cross	6,000			6,000
Netherlands Red Cross	508,511			508,511

# International Federation of Red Cross and Red Crescent Societies

MDRCN003 - China - Sichuan Earthquake

Interim Financial Report

Selected Parameters	
Reporting Timeframe	2008/1-2008/11
Budget Timeframe	2008/5-2010/4
Appeal	MDRCN003
Budget	APPEAL

All figures are in Swiss Francs (CHF)

<i>New York Office (from Adams Street Partners)</i>	3,376				3,376
<i>New York Office (from Alcatel Lucent)</i>	9,043				9,043
<i>New York Office (from Applied Materials)</i>	17,651				17,651
<i>New York Office (from Bechtel Group Foundation)</i>	68,343				68,343
<i>New York Office (from Citadel Investment group)</i>	52,817				52,817
<i>New York Office (from Codexis)</i>	1,984				1,984
<i>New York Office (from Fibrogen)</i>	12,334				12,334
<i>New York Office (from Genzyme Corporation)</i>	13,263				13,263
<i>New York Office (from Heinz)</i>	6,028				6,028
<i>New York Office (from Hospira)</i>	6,028				6,028
<i>New York Office (from Huber)</i>	3,014				3,014
<i>New York Office (from Jones apparel Group)</i>	1,318				1,318
<i>New York Office (from Schering Plough)</i>	32,981				32,981
<i>New York Office (from THERMO FISCHER)</i>	24,114				24,114
<i>New York Office (from United States - Private Donors)</i>	5,996				5,996
<i>New York Office (from Yahoo)</i>	9,646				9,646
<i>OPEC Fund For International Developm</i>	1,205,691				1,205,691
<b>C2. Outstanding pledges (Revalued)</b>	<b>3,315,038</b>				<b>3,315,038</b>

## Inkind Goods & Transport

<i>Belgium Red Cross (Flanders)</i>	134,228				134,228
<i>British Red Cross</i>	2,589,652				2,589,652
<i>Canadian Government</i>	249,696				249,696
<i>Canadian Red Cross</i>	2,247,991				2,247,991
<i>Danish Red Cross</i>	1,395,009				1,395,009
<i>Finnish Red Cross</i>	886,681				886,681
<i>German Red Cross</i>	1,183,335				1,183,335
<i>Japanese Red Cross</i>	3,217,992				3,217,992
<i>Netherlands Red Cross</i>	3,662,744				3,662,744
<i>Norwegian Red Cross</i>	1,889,444				1,889,444
<i>Spanish Red Cross</i>	695,552				695,552
<b>C3. Inkind Goods &amp; Transport</b>	<b>18,152,323</b>				<b>18,152,323</b>

## Inkind Personnel

<i>American Red Cross</i>	22,293				22,293
<i>Australian Red Cross</i>	22,000				22,000
<i>Canadian Red Cross</i>	12,907				12,907
<b>C4. Inkind Personnel</b>	<b>57,200</b>				<b>57,200</b>

<b>C. Total Income = SUM(C1..C5)</b>	<b>82,976,234</b>				<b>82,976,234</b>
<b>D. Total Funding = B + C</b>	<b>82,976,234</b>				<b>82,976,234</b>
<b>Appeal Coverage</b>	<b>50%</b>				<b>50%</b>

## II. Balance of Funds

	Goal 1: Disaster Management	Goal 2: Health and Care	Goal 3: Capacity Building	Goal 4: Principles and Values	Coordination	TOTAL
<b>B. Opening Balance</b>	0					<b>0</b>
<b>C. Income</b>	82,976,234					<b>82,976,234</b>
<b>E. Expenditure</b>	-50,119,599					<b>-50,119,599</b>
<b>F. Closing Balance = (B + C + E)</b>	<b>32,856,636</b>					<b>32,856,636</b>

International Federation of Red Cross and Red Crescent Societies

MDRCN003 - China - Sichuan Earthquake

Interim Financial Report

Selected Parameters	
Reporting Timeframe	2008/1-2008/11
Budget Timeframe	2008/5-2010/4
Appeal	MDRCN003
Budget	APPEAL

All figures are in Swiss Francs (CHF)

### III. Budget Analysis / Breakdown of Expenditure

Account Groups	Budget	Expenditure					TOTAL	Variance
		Goal 1: Disaster Management	Goal 2: Health and Care	Goal 3: Capacity Building	Goal 4: Principles and Values	Coordination		
A		B					A - B	
<b>BUDGET (C)</b>	<b>167,102,368</b>						<b>167,102,368</b>	
<b>Supplies</b>								
Shelter - Relief	24,610,307	23,527,757				23,527,757	1,082,550	
Shelter - Transitional		1,082,550				1,082,550	-1,082,550	
Construction Materials	81,841,090						81,841,090	
Clothing & textiles	3,171,287	636,415				636,415	2,534,872	
Food	3,500,000						3,500,000	
Water & Sanitation	2,121,383	722				722	2,120,661	
Medical & First Aid	845,424	1,424				1,424	844,000	
Other Supplies & Services	9,406,822	2,024,838				2,024,838	7,381,984	
ERU		3,938,713				3,938,713	-3,938,713	
<b>Total Supplies</b>	<b>125,496,313</b>	<b>31,212,418</b>				<b>31,212,418</b>	<b>94,283,895</b>	
<b>Land, vehicles &amp; equipment</b>								
Land & Buildings	2,550,000						2,550,000	
Vehicles	260,750						260,750	
Computers & Telecom	59,585	7,835				7,835	51,750	
Office/Household Furniture & Equipm.	123,279	6,915				6,915	116,364	
<b>Total Land, vehicles &amp; equipment</b>	<b>2,993,614</b>	<b>14,750</b>				<b>14,750</b>	<b>2,978,864</b>	
<b>Transport &amp; Storage</b>								
Storage	28,775	28,775				28,775	0	
Distribution & Monitoring	11,193,678	11,193,678				11,193,678	0	
Transport & Vehicle Costs	1,054,089	24,307				24,307	1,029,782	
<b>Total Transport &amp; Storage</b>	<b>12,276,542</b>	<b>11,246,759</b>				<b>11,246,759</b>	<b>1,029,783</b>	
<b>Personnel</b>								
International Staff	4,354,407	315,552				315,552	4,038,855	
National Staff	4,060,688	44,332				44,332	4,016,356	
National Society Staff	1,620,737	6,477				6,477	1,614,260	
Consultants	192,343	72,576				72,576	119,767	
<b>Total Personnel</b>	<b>10,228,175</b>	<b>438,936</b>				<b>438,936</b>	<b>9,789,239</b>	
<b>Workshops &amp; Training</b>								
Workshops & Training	2,960,857	14,356				14,356	2,946,501	
<b>Total Workshops &amp; Training</b>	<b>2,960,857</b>	<b>14,356</b>				<b>14,356</b>	<b>2,946,501</b>	
<b>General Expenditure</b>								
Travel	511,703	97,413				97,413	414,290	
Information & Public Relation	1,101,273	16,724				16,724	1,084,549	
Office Costs	298,436	36,021				36,021	262,415	
Communications	190,362	14,355				14,355	176,007	
Professional Fees	100,032	100,222				100,222	-190	
Financial Charges	5,000	-110,047				-110,047	115,047	
Other General Expenses	78,407	3,125				3,125	75,282	
<b>Total General Expenditure</b>	<b>2,285,213</b>	<b>157,812</b>				<b>157,812</b>	<b>2,127,401</b>	
<b>Contributions &amp; Transfers</b>								
Cash Transfers National Societies		3,524,795				3,524,795	-3,524,795	
<b>Total Contributions &amp; Transfers</b>		<b>3,524,795</b>				<b>3,524,795</b>	<b>-3,524,795</b>	
<b>Programme Support</b>								
Program Support	10,861,654	2,954,734				2,954,734	7,906,920	
<b>Total Programme Support</b>	<b>10,861,654</b>	<b>2,954,734</b>				<b>2,954,734</b>	<b>7,906,920</b>	
<b>Services</b>								
Services & Recoveries		554,193				554,193	-554,193	
<b>Total Services</b>		<b>554,193</b>				<b>554,193</b>	<b>-554,193</b>	
<b>Operational Provisions</b>								

**International Federation of Red Cross and Red Crescent Societies**

MDRCN003 - China - Sichuan Earthquake

Interim Financial Report

Selected Parameters	
Reporting Timeframe	2008/1-2008/11
Budget Timeframe	2008/5-2010/4
Appeal	MDRCN003
Budget	APPEAL

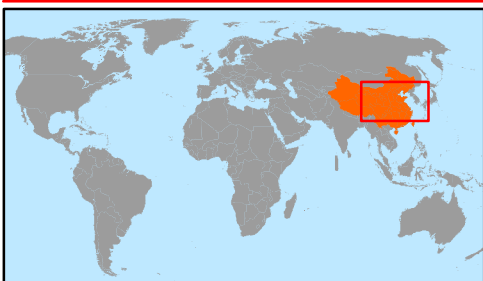
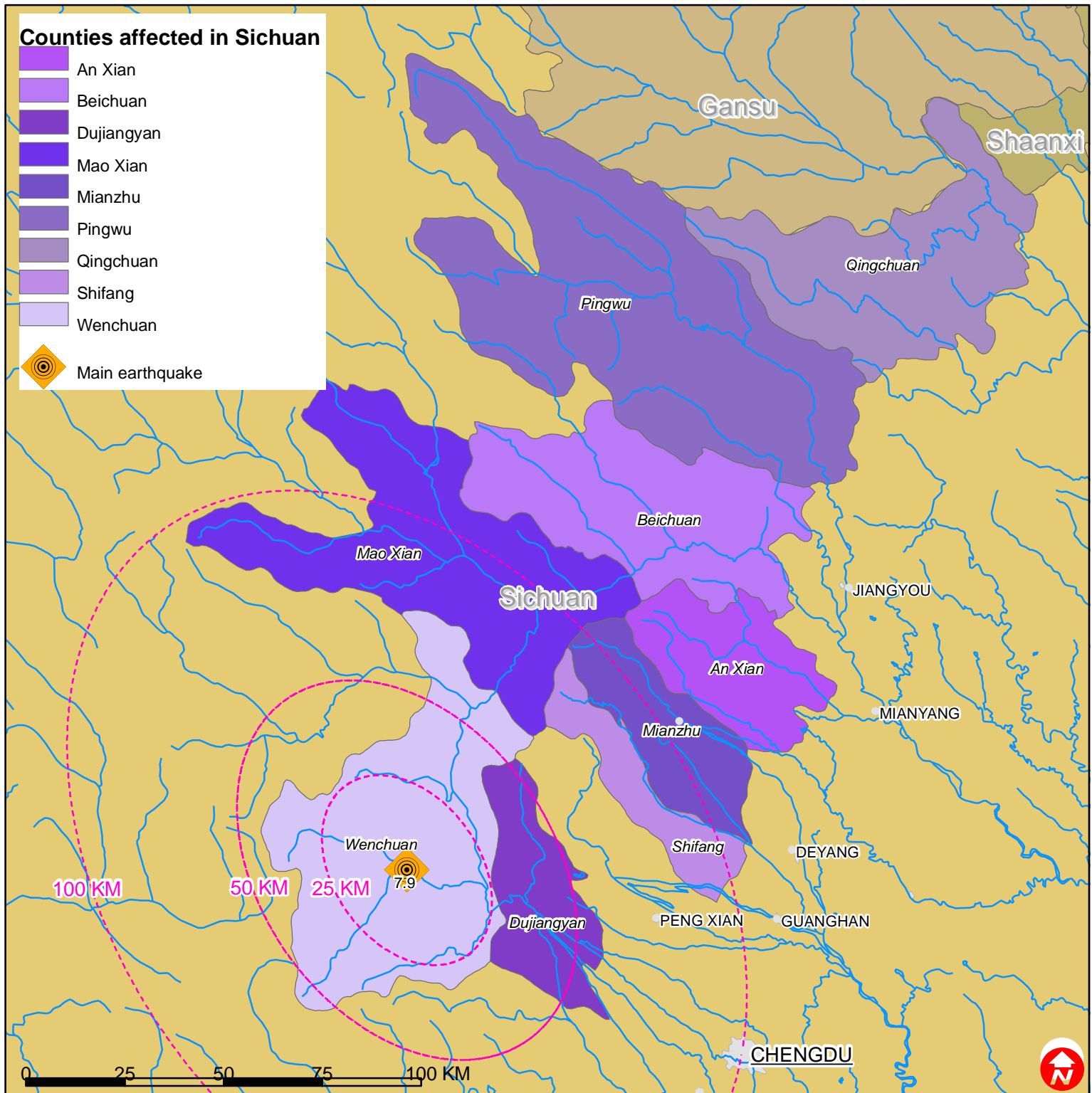
All figures are in Swiss Francs (CHF)

**III. Budget Analysis / Breakdown of Expenditure**

Account Groups	Budget	Expenditure					TOTAL	Variance
		Goal 1: Disaster Management	Goal 2: Health and Care	Goal 3: Capacity Building	Goal 4: Principles and Values	Coordination		
A							B	A - B
<b>BUDGET (C)</b>		<b>167,102,368</b>					<b>167,102,368</b>	
Operational Provisions		844				844	-844	
<b>Total Operational Provisions</b>		<b>844</b>				<b>844</b>	<b>-844</b>	
<b>TOTAL EXPENDITURE (D)</b>	<b>167,102,368</b>	<b>50,119,599</b>					<b>50,119,599</b>	<b>116,982,769</b>
<b>VARIANCE (C - D)</b>		<b>116,982,769</b>					<b>116,982,769</b>	



# China: Earthquake



The maps used do not imply the expression of any opinion on the part of the International Federation of the Red Cross and Red Crescent Societies or National Societies concerning the legal status of a territory or of its authorities.

Map data sources: ESRI, DEVINFO, GIST, CIESIN, International Federation - MDRCN003EAREV.mxd