

# Operations update

 International Federation  
of Red Cross and Red Crescent Societies

## China: Sichuan Earthquake

Emergency appeal n° MDRCN003  
GLIDE n° [EQ-2008-000062-CHN](#)  
Operations update n° 24  
21 August 2009

**Period covered by this update:** 13 June – 30 July 2009

**Appeal target (current):** CHF 167,102,368 (USD 137.7 million or EUR 110 million)

**Appeal coverage:** With contributions received to date, in cash and kind, and those in the pipeline, the appeal is currently approximately 92 per cent covered. <click [here](#) for interim financial report or [here](#) for contact details>

### Appeal history:

- A revised emergency appeal was launched on 20 November 2008 for 167.1 million (USD 137.7 million or EUR 110 million) to assist 200,000 families (up to 1,000,000 people) for 31 months.
- An emergency appeal was launched on 30 May 2008 for CHF 96.7 million (USD 92.7 million or EUR 59.5 million) in response to the huge humanitarian needs and in recognition of the unique position of the Red Cross Society of China (RCSC) supported by Red Cross Red Crescent partners to deliver high quality disaster response and recovery programmes.
- A preliminary emergency appeal of CHF 20.1 million (USD 19.3 million and EUR 12.4 million) was issued on 15 May 2008 to support the RCSC to assist around 100,000 people affected by the earthquake for 12 months.
- CHF 250,000 (USD 240,223 or EUR 155,160) was allocated from the International Federation's Disaster Relief Emergency Fund (DREF) on 12 May 2008, to support the RCSC to immediately start assessments of the affected areas and distribute relief items.



Part of the community-based health and first aid workshop included an assessment in Xinglong village, Jiulong township. The couple in this picture shared information on their current situation especially health and psychosocial health a year after the earthquake. Red Cross staff had the opportunity to test out tools and materials as well. Hong Kong branch of the RCSC.

**Summary:** The International Federation's shelter support programme has made substantial progress since the signing of the addendum to the memorandum of understanding on 13 May. As reported in the last operations update, beneficiary lists in three townships were verified in early June and technical monitoring was due to begin in July. The first tranche of International Federation funds were transferred to the Deyang branch of the RCSC. However, new developments at ground level have impeded further efforts to move forward. All relevant partners are in discussion to move forward in this area and a revised appeal will be launched in the coming

months to take in these changes.

Apart from delays in the shelter support programme, all community-based programmes are progressing. A community-based health and first aid workshop was held in Chengdu while project proposals for water and sanitation are being evaluated.

Many partner national societies have made contributions to the appeal: American Red Cross/American government, Australian Red Cross/Australian government, Belgian Red Cross/Belgian government, British Red Cross, Bulgarian Red Cross, Canadian Red Cross/Canadian government, Cook Islands Red Cross, Croatian Red Cross, Czech Red Cross, Danish Red Cross/Danish government, Estonian Red Cross, Finnish Red Cross/Finnish government, French Red Cross, German Red Cross, Icelandic Red Cross/ Icelandic government, Indian Red Cross, Iranian Red Crescent, Irish Red Cross/ Irish government, Japanese Red Cross/Japanese government, Lithuanian Red Cross, Malaysian Red Crescent, Mauritius Red Cross, Monaco Red Cross, Netherlands Red Cross/Netherlands government, New Zealand Red Cross/New Zealand government, Norwegian Red Cross/Norwegian government, Qatar Red Crescent, Romanian Red Cross, Singapore Red Cross, Spanish Red Cross, Sri Lanka Red Cross, Swedish Red Cross/ Swedish government, Turkish Red Crescent and United Arab Emirates Red Crescent Society, as well as contributions from American, Greek, Italian, Luxembourg, Slovenian and South Africa governments, OPEC Fund for International Development, the Stavros Niarchos Foundation and many corporate partners.

The Red Cross Society of China has also received many bilateral contributions of funding, including the following: Canadian Red Cross, Cambodian Red Cross, French Red Cross, German Red Cross, Japanese Red Cross, Republic of Korea Red Cross, Norwegian Red Cross, Pakistan Red Crescent, Singapore Red Cross, Spanish Red Cross, Swiss Red Cross, Thai Red Cross, Turkish Red Crescent and Viet Nam Red Cross. These contributions have been added to the various substantial resources raised domestically by the Red Cross Society of China in its national fundraising appeal.

The appeal totalling 167.1 million is 92 per cent covered, with cash and in-kind contributions totalling CHF 153.57 million received. Total expenditure from May 2008 until the end of July 2009 is CHF 77.45 million<sup>1</sup>.

The International Federation, on behalf of the Red Cross Society of China, would like to thank all partners for their generous response to this appeal.

[<click here to view the revised emergency and recovery appeal budget>](#), [<here, presented by sector>](#)  
[<click here to view the interim financial report>](#) [<click here to view a map of the affected areas>](#)  
[<click here to view contact details>](#)

## Background

An 8.0 magnitude earthquake devastated Wenchuan county and the surrounding areas of Sichuan, Gansu and Shaanxi provinces in western China on 12 May 2008. Today, the official death toll stands at over 87,449<sup>2</sup>, with up to 375,000 injured and millions displaced.

## The situation

A 5.6 Richter scale earthquake struck Mianzhu County in the early hours of 1 July, followed by several aftershocks and a second 5.0 magnitude quake the same day. There were no reported casualties but eight people sustained minor injuries and according to the Sichuan provincial government, over 8,000 'rooms'<sup>3</sup> were damaged from the quakes. Reports from authorities indicate that none of the newly completed or homes under construction were affected. These regular earthquakes and aftershocks are a constant reminder of the disaster which struck more than a year ago.

While reconstruction continues at full speed in the earthquake affected areas especially in Sichuan, there are still families especially those living in the more rural and mountainous areas that have not been able to start rebuilding their homes due to a lack of financial and human resources. Families that have managed to build their homes continue to face hardships due to the increased burden of debt. With rising unemployment adding to the increasing pressures faced by the rural poor, the country is putting all efforts to complete housing reconstruction within government enforced deadlines, whilst maintaining social harmony, especially in light of the upcoming 60<sup>th</sup> anniversary of the founding of the People's Republic of China.

<sup>1</sup> Please note that the interim financial report attached reflects income and expenditure up to 30 July 2009. For the latest information on contributions, click [here](#) for the latest donors' response list.

<sup>2</sup> No official statement by the government has been issued on the status of the 18,500 missing people. However, some media reports quote a death toll of more than 80,000 people. According to Xinhua news, 86,663 deaths alone were from Sichuan province.

<sup>3</sup> Traditionally in China, rooms were counted instead of houses (due to several households per house) and in general, a house is made up of 3 rooms.

According to information<sup>4</sup> issued by the Sichuan people's government, as of July 2009, nearly 90-95 percent of rural housing in Sichuan has been completed.

## Red Cross and Red Crescent action

### Overview

Despite gains made at the Hainan partnership meeting held in April 2009 in finding ways forward to many of the critical issues, which culminated in the lifting of the suspension of International Federation-supported programmes, the shelter support programme has progressed much slower than expected.

In May, significant progress was made to capture ground lost and by early June, the International Federation had advanced to the final stage of its shelter implementation plan prior to the distribution of cash grants to beneficiaries. The first tranche of funds was transferred from the International Federation to the RCSC Deyang branch at the end of May to be distributed to beneficiaries in June. During that time, the beneficiary lists in the three original townships were verified. International Federation technical monitoring teams were also set to begin construction monitoring.

In spite of this progress, by late June, the local government added new conditions which made it difficult to proceed and further delayed the shelter support programme. While some questions have been answered in recent days, many of the outstanding ones will only be known in the coming weeks. As a result of these conditions, the International Federation is expecting significant changes to its programme. These changes are in addition to those discussed and agreed to by RCSC, partner national societies and the International Federation during the partnership meeting in Hainan.

The underlying reason for many of these conditions still hinge on sensitivities regarding the core issue of equity in Mianzhu county. Until local governments are absolutely certain that Red Cross support is delivered in an equitable manner to the affected communities in the county, the International Federation anticipates the possibility of further changes in some of the critical components of the shelter support programme, and possibly further delays.

Although RCSC and the International Federation have limited influence and involvement in the core issue of social equity, dialogues continue with all relevant parties to move forward to fulfill Red Cross Red Crescent obligations to the most vulnerable while considering the local government's priorities. Given the unprecedented scale of the disaster, reconstruction and recovery needs are still enormous and as such, the Red Cross Red Crescent Movement is in a position to help a larger number of vulnerable families with rebuilding their homes.

The International Federation's shelter support programme will be adjusted to take into account these changes and requests by RCSC on some considerations arising out of these developments. It is in the process of widening its project area and restructuring its assistance in Sichuan. The budgets and plans of action to fit these changes are being made and will be reflected in the revised appeal which will be launched in the coming months.

In the meantime, progress continues to be made in other programmes. A community-based health and first aid workshop was held in Chengdu early this month and water and sanitation proposals are being reviewed for feasibility.

Shelter reconstruction
<b>Objective 1: (Recovery Phase: 7 to 31 months):</b> To 22,540 <sup>5</sup> households of the most vulnerable earthquake-affected families in Jiulong, Zundao, Banqiao and possibly Xinglong townships of Mianzhu County to reconstruct their homes using the "owner-driven" reconstruction model.
<b>Expected results</b> <ul style="list-style-type: none"><li>• Homeowners and local authorities have access to technical support to build earthquake-resistant homes.</li><li>• Supplementary monitoring and quality control that reinforces and complements the government of China's monitoring and quality control to support homeowners and contractors to build earthquake resistant homes.</li><li>• Homeowners receive necessary financial support to build earthquake-resistant homes.</li><li>• Homeowners have the necessary information and knowledge to build earthquake-resistant homes.</li></ul>

<sup>4</sup> Website of the Sichuan people's government: [http://www.gov.cn/jrzq/2009-05/07/content\\_1306695.htm](http://www.gov.cn/jrzq/2009-05/07/content_1306695.htm)

<sup>5</sup> Previous reports and the draft shelter programme still address 17,540 households in three townships. As requested by the government of China, the International Federation has included a fourth township with another 5,000 households under this programme with the understanding that sufficient funding is available.

**Progress:** Since June, ground-level conditions have made it difficult to move forward. In anticipation of Red Cross cash grants being distributed to beneficiaries by June, the first tranche of International Federation funds were transferred to the Deyang branch of the RCSC. However, beneficiary lists for three original townships, which had been verified by the International Federation in early June, had to be re-verified by the local governments. The lists given by Mianzhu government to the International Federation on 23 May were produced early this year, and based on the use of the lists in an earlier distribution<sup>6</sup> by the central and provincial governments in March, many complaints were received by households who were not included in the list.

In late May, the provincial government conducted an assessment through home visits that included taking photos of every beneficiary in front of their houses. As a result of that assessment, some people were removed from the list while others were included. The new re-verified lists are pending approval at a higher level and the International Federation is expecting to receive them soon along with the lists for the 18 other townships.

The International Federation will be providing full coverage in the three original townships of Banqiao, Jiulong and Zundao, and full coverage for those who have been relocated in the three rural and mountainous townships. The government is still in the process of finalizing the criteria selection for the other 15 townships and the International Federation expects the final beneficiary selection criteria to reflect the local government's aim of ensuring Red Cross programmes are accepted. The International Federation also expects that the number of beneficiaries will increase substantially and the amount of cash grants support per household decrease substantially. Therefore International Federation support in the remaining 15 townships could be less than originally envisaged.

Until the selection criteria in 15 townships are agreed and all beneficiary lists in 21 townships are final and approved, technical construction as well as accompanying technical assistance, homeowner trainings and other related activities have been restricted. Meanwhile, the information dissemination plan continues to be fine tuned.

<b>I. Health and care</b>
<b>Objective 1 (Recovery Phase: 7 to 31 months):</b> To reduce the vulnerability of the earthquake-affected population to public health risks through a community-based health (CBH) approach.
<b>Expected results</b>
<ul style="list-style-type: none"> <li>• There is significantly increased knowledge how to prevent and manage public health risks among earthquake affected communities.</li> <li>• The knowledge and capacity of RCSC board members, staff and volunteers to coordinate, manage and implement programmes is significantly strengthened.</li> </ul>
<b>II. Psychosocial support</b>
<b>Objective 1 (Recovery Phase: 7 to 31 months):</b> Improve the psychological resilience of the earthquake affected population.
<b>Expected Result</b>
<ul style="list-style-type: none"> <li>• Earthquake-affected people are able to manage stress and overcome crisis in their communities, individually, and among their families.</li> </ul>

**Progress:**

*Community-based health and first aid (CBHFA)*

The International Federation initiated its CBHFA programme through a CBHFA workshop on 1-10 July in Chengdu. Over 30 participants from RCSC branches across the country including Deyang and Mianzhu attended the workshop which was facilitated by the health coordinator from the Geneva secretariat. Participants found the concept of CBHFA interesting and highly effective. They were also encouraged by the participatory approach of the workshop and learnt different facilitation skills, adult learning techniques and obtained an in-depth understanding of CBHFA that will provide them with the necessary tools to train RCSC trainers and mobilize communities.

The workshop also included a field trip to Xinglong village in Jiulong township. Participants were given the opportunity to use some of the assessment tools and materials on the communities in this village.

During the workshop, the International Federation's CBHFA manual from Geneva, which was translated and localized to suit the cultural context, was reviewed by the participants who provided useful feedback on improving some of the contents. A review team consisting of participants from the various RCSC branches have

<sup>6</sup> The central government distributes CNY10,000, provincial government distributed CNY 3,000 and the Jiangsu government distributed CNY 3,000 to each qualified household.

volunteered to review the manual thoroughly by August. Once it is finalized and approved at RCSC headquarters level, the manual will be adopted across all RCSC branches.

The International Federation continues to coordinate with other actors involved in the provision of health in the earthquake affected areas. On 26 June, a second health-related non-governmental organizations (NGOs) coordination meeting was held between the International Federation and nine other NGOs which focussed on the welfare of disabled people. In sharing their mandate, nature and work progress in Mianzhu County, participants agreed that good collaboration and coordination are important in ensuring earthquake survivors receive the necessary assistance, and therefore an improvement of their welfare, and also in improving the referral system already in place.



Red Cross staff from across China participated in the community-based health and first aid workshop organized by the International Federation.

*Psychosocial support (PSP)*

The RCSC Sichuan branch organized a volunteer meeting on 10 July, which was attended by volunteers from the Sichuan psychological volunteers' team. The team was established in June 2008 and currently has 40 members made up of students from universities within Sichuan and professional psychological counsellors. After the earthquake, these volunteers conducted various activities in earthquake affected schools and this gathering provided an opportunity for them to meet up after a year and also to share their experiences, and express their expectations and concerns on their future work. The RCSC and International Federation presented its psychosocial support programme and the PSP activities that have been conducted in Sichuan so far. Some aspects of the Red Cross PSP tool kit that is in the final stages of development, was also introduced and demonstrated. The Yunnan Red Cross branch, which has been conducting psychological activities for many years before the earthquake, also shared its experiences and although their experience in providing psychological counselling is rather different compared to the Sichuan Red Cross branch, both branches utilized the lessons learned on the volunteer recruitment and management.

The International Federation is heading the review of the Inter-Agency Standing Committee guideline for "Mental Health and PSP in Emergency Settings" in Mandarin, in collaboration with mental health specialists from RCSC to ensure a proper translation and terminology.

The International Federation has completed the translation for PSP handbooks that were produced by PSP Referral Centre in Copenhagen. The trainer's handbook, intervention handbook and participants' handbook will be included into the PSP tool kit with other PSP materials which will be introduced to community-based trainers in PSP.

**Challenges:** While many participants benefited from the CBHFA workshop, a few participants found some of the concepts challenging due to their lack of knowledge in health-related issues. To avoid this in the future, it was agreed that the participant selection process would be improved.

<b>Water and sanitation, and hygiene promotion</b>	
<b>Objective 1 (Recovery Phase: 7 to 31 months):</b> To reduce vulnerability of earthquake-affected populations from water-borne diseases by improving access to safe water and sanitation facilities and empowering community based organizations on water governance.	
<b>Expected results</b>	
<ul style="list-style-type: none"> <li>• Communities have improved access to water and sanitation facilities according to minimum Sphere standards in three townships of Mianzhu County.</li> <li>• Communities and RCSC have skills and knowledge to identify problems and solutions involving water, sanitation and hygiene practice issues through participatory hygiene and sanitation transformation (PHAST).</li> </ul>	

**Progress:** As part of the overall capacity building plan in water and sanitation emergencies, the International Federation's water and sanitation delegate conducted a review of the water and sanitation emergency response units (ERUs) which were handed over to RCSC in five of the six RCSC branches across China on 6- 29 June. A

representative from RCSC as well as the the Austrian and Spanish Red Cross were also part of the review team. A draft report has been sent to the regional and zone offices for feedback.

The International Federation received two proposals from the Water Bureau on two new sites in Hanwang Xinkai (gravity-fed system or GFS) and Xinan (borehole). In evaluating these proposals, the water and sanitation delegate attended a second-level evaluation of the Hanwang Xinkai water project at the Deyang Water Bureau and a first-level evaluation of the Xinan water project.

The International Federation is also in discussions with the Mianzhu Rural Energy Bureau about biogas latrines and to clarify the separate roles and responsibilities between the Mianzhu Rural Energy Bureau and Mianzhu National Patriotic Health Campaign Committee in relation to the latrine superstructure.

The water and sanitation delegate participated in the CBHFA master facilitation workshop in Chengdu and gave a presentation on how water and sanitation and participatory hygiene and sanitation transformation (PHAST) can be integrated with the CBHFA model for community-based water and sanitation projects.

**Challenges:** As the Mianzhu Water Bureau has its own project implementation schedule, during the suspension of International Federation programmes earlier in the year, the GFS (one each in Jiulong and Zundao) projects initially designated for the International Federation were given to the United Nations Children's Fund (UNICEF) and are no longer available to the International Federation.

The Mianzhu branch of the RCSC and the International Federation is coordinating with the Mianzhu Water Bureau to agree on a feasible project. Due to RCSC stretched capacity, the lack of a counterpart from RCSC has also made establishing water and sanitation projects a challenge.

<b>Livelihoods</b>
<b>Objective 1: (Early Recovery Phase 6 to 12 months):</b> To provide vulnerable families with enough income/resources to survive winter and start reconstructing their houses.
<b>Expected results</b>
<ul style="list-style-type: none"> <li>• Up to 15,000 vulnerable families receive support to generate their income or resources.</li> <li>• The vulnerable families start livelihoods activity and reconstruction of their houses by the spring of 2009.</li> </ul>
<b>(Reconstruction and Longer-Term Recovery Phase: 13 to 31 months):</b>
<b>Objective 2:</b> Vulnerable families have means (both skills and resources), to rehabilitate their livelihoods.
<b>Objective 3:</b> Vulnerable families have sustainable livelihoods and develop their livelihoods strategy.
<b>Expected results</b>
<ul style="list-style-type: none"> <li>• The livelihoods needs and appropriate livelihoods interventions are developed by April 2009.</li> <li>• Up to 4,000 vulnerable people receive appropriate training to have a stable income source.</li> <li>• The necessary livelihoods assets are replaced or rehabilitated.</li> <li>• The vulnerable families will have at least one stable income source.</li> <li>• The people develop sustainable livelihoods.</li> </ul>

**Progress:** The RCSC requested that implementation of the livelihoods programme begin only in September, after rural housing construction is closer to completion. The International Federation is now in the final stages of its preparations towards a redesigned plan of action, and has spent the last few months researching livelihood initiatives within and outside China that meet conditions stipulated by the Mianzhu government (of a non-cash and non-commodity nature).

A meeting on 16 July was held in Chengdu to map out an overall strategy and agree on a final plan pertaining to the livelihoods programme between RCSC, International Federation, Japanese Red Cross and British Red Cross. The meeting was also attended by the Mianzhu Labour Bureau and the Mianzhu branch of the RCSC, which, as of May 2009, is now independent of the Mianzhu health bureau.

Open discussions by all parties on the livelihoods options proposed by the Mianzhu Red Cross led to a positive outcome in mapping out the Red Cross' livelihoods interventions in Mianzhu. RCSC and donors and International Federation mutually agreed on focusing microfinance and vocational/business training as the key forward in implementing a programme that will meet beneficiary needs at this point in time within the urgent time frame.

The International Federation's livelihoods delegate is working with Mianzhu branch of the RCSC, Mianzhu Labour Bureau and other international organizations in drawing up a plan of action within clear deadlines set during the meeting. The final plan of action will be reflected in the revised appeal.

<b>Disaster management</b>
<b>Objective 1 (Recovery Phase: 7 to 31 months):</b> To reduce the vulnerability of the population in Sichuan Province in areas where village home reconstruction is taking place by improving community capacity to plan and implement appropriate risk reduction initiatives addressing their local hazards.
<b>Expected results</b>
<ul style="list-style-type: none"> <li>• The affected Red Cross branches develop their capacities in community-based disaster management in future.</li> <li>• The affected communities learn how to respond during earthquakes and other disasters.</li> </ul>
<b>Objective 2 (Recovery Phase: 7 to 31 months):</b> To reduce vulnerability of the population prior to the onset of natural disasters in affected areas of Gansu and Shaanxi provinces by improving community capacity to plan and implement appropriate risk reduction initiatives addressing their local hazards.
<b>Expected results</b>
<ul style="list-style-type: none"> <li>• Volunteers and staff of the RCSC in Gansu and Shaanxi can provide improved risk analysis, including assessment of local vulnerabilities and capacities for effective disaster risk reduction and mitigation measures.</li> <li>• Targeted communities in Gansu and Shaanxi have capacity to monitor local disaster risks and use their risk analysis to develop the institutional disaster planning.</li> </ul>
<b>Objective 3 (Recovery Phase: 7 to 31 months):</b> RCSC builds its capacity to effectively and quickly respond to emergencies in the future.
<b>Expected results</b>
<ul style="list-style-type: none"> <li>• RCSC develops three disaster preparedness centres in the affected areas.</li> </ul>

**Progress:** The memorandum of understanding for the CBDP (community-based disaster preparedness) and disaster preparedness centres for Gansu, Shaanxi and Sichuan Red Cross provinces has been signed. The International Federation will support RCSC to construct nine disaster preparedness centres in Sichuan, Shaanxi and Gansu and implement CBDP in 30 villages in Shaanxi and Gansu.

The International Federation will be discussing with RCSC on the proposals submitted by the national society and to see if the shelter and logistics technical delegates in the Chengdu office can be involved in key issues on warehouse construction, and logistics and warehouse systems. An assessment was conducted in Gansu where two disaster preparedness centres in Gannan and Longnan prefectures will be supported.

Gansu and Shaanxi Red Cross branches have been requested to conduct risk mapping analysis in the local areas to identify targeted communities under the CBDP project. A CBDP workshop is being planned for Gansu and Shaanxi along with the development of a plan of action.

## Coordination and partnerships

The International Federation has and will continue to support the RCSC in coordinating Red Cross Red Crescent Movement efforts. At the request of the RCSC leadership, the International Federation will continue to play an important role in coordinating all Red Cross Red Crescent Movement support to the earthquake operations. The RCSC has requested that the Red Cross Red Crescent Movement take a unified approach towards responding to the needs of Red Cross beneficiaries and supporting the RCSC throughout the response.

The RCSC is still regularly involved in high level coordination meetings with government authorities, and has been closely involved in discussions with the Ministry of Construction regarding reconstruction planning.

Close coordination between the International Federation and various organizations such as Build Change, Handicap International, UNICEF and the International Labour Organization (ILO) have been positive. This collaboration is valued by the relevant parties as it helps with information sharing and leveraging additional resources.

The coordination efforts between the International Federation operations support team, the RCSC at all levels and relevant official agencies have been positive and have helped facilitate solutions towards reconstruction and recovery challenges.

## **Capacity of the Red Cross Society of China**

The Red Cross Society of China was founded in 1904, becoming one of the first members of the International Federation in 1919. The mission of the RCSC is reflected in its law, acknowledged by the central and provincial governments, and is reflective of the good working relationship with the government, particularly in the fields of relief and health activities. Today with over 21 million members, a headquarters in Beijing and established provincial and municipality branches corresponding to state administrative units, the RCSC is well placed to act as a valuable auxiliary partner to the government in times of disaster.

In recent years, China has experienced many earthquakes, during which RCSC has conducted key relief activities. In addition, the RCSC has responded to massive disasters caused by typhoons, torrential rains and snow in the past few years. Through these experiences, the RCSC has improved its response mechanisms to deliver assistance to affected individuals. When disaster strikes, RCSC branches at the provincial and local levels immediately launch local appeals for funding and collect items such as warm clothing to assist those affected by disasters.

The RCSC maintains a nationwide network of six regional disaster preparedness centres. These are essentially warehouses with stocks of relief supplies, but they also serve as focal points for training staff in disaster management, including logistics, report writing skills and first aid, tailored to different kinds of disasters.

## **Capacity of International Federation**

The International Federation's East Asia regional office in Beijing is comprised of a head of office and technical specialists as well as skilled local staff in disaster management, health and care, planning, monitoring, evaluation and reporting, media and communications and finance. The regional office is backed by a team of staff in the International Federation's Asia Pacific zone office in Kuala Lumpur, and relevant technical departments in Geneva.

The International Federation's operations support team in Chengdu, Sichuan province, provides support as necessary to the RCSC to implement the operation successfully. The International Federation's team consists of a head of reconstruction and recovery, head of office, technical delegates in shelter reconstruction, health and psychosocial support, water and sanitation, livelihoods, logistics, finance, and reporting. A strong team of national staff provides further support to the team to support the considerable number of national society staff and volunteers in the implementation of the programmes.

The Chengdu office coordinates with the RCSC office in Sichuan, local authorities and partner national society representatives to manage operation programme activities. The regional office in Beijing will continue to coordinate with the RCSC headquarters for Gansu and Shaanxi programming. Furthermore, the Beijing office will also continue to hold regular meetings with the RCSC senior management.

## **Communications – Advocacy and Public Information**

The International Federation's regional communications delegate continues to support the RCSC in communications and advocacy matters. He has also been involved in responding to the changing situation of the International Federation's programmes and in crafting new messages to reflect this in the documents being made available to partners and the media.

Visit the Federation's website at [www.ifrc.org](http://www.ifrc.org) for updated press releases, stories, and photos.

## How we work

**All International Federation assistance seeks to adhere to the [Code of Conduct for the International Red Cross and Red Crescent Movement and Non-Governmental Organizations \(NGOs\) in Disaster Relief](#) and is committed to the [Humanitarian Charter and Minimum Standards in Disaster Response \(Sphere\)](#) in delivering assistance to the most vulnerable.**

The International Federation's activities are aligned with its Global Agenda, which sets out four broad goals to meet the Federation's mission to "improve the lives of vulnerable people by mobilizing the power of humanity".

### Global Agenda Goals:

- Reduce the numbers of deaths, injuries and impact from disasters.
- Reduce the number of deaths, illnesses and impact from diseases and public health emergencies.
- Increase local community, civil society and Red Cross Red Crescent capacity to address the most urgent situations of vulnerability.
- Reduce intolerance, discrimination and social exclusion and promote respect for diversity and human dignity.

## Contact information

### For further information specifically related to this operation please contact:

- Red Cross Society of China: Mr. Wang Xiaohua, director of external relations department; email: [rcsc@chineseredcross.org](mailto:rcsc@chineseredcross.org); phone: +86.10.6404.8366, fax +86.10.6402.9928.
- East Asia regional office in China: Mr. Carl Naucner, head of regional office, mobile: +86 10 6532 7162, email: [carl.naucner@ifrc.org](mailto:carl.naucner@ifrc.org)
- Sichuan Earthquake Operations Office in Chengdu: Mr. Frans Lommers, head of reconstruction and recovery, mobile: +86 136 9922 9695, email: [frans.lommers@ifrc.org](mailto:frans.lommers@ifrc.org) and Sheila Thornton, head of Chengdu office, mobile: +86 136 8849 7505, email: [sheila.thornton@ifrc.org](mailto:sheila.thornton@ifrc.org)
- Federation zone office in Kuala Lumpur:
  - Alistair Henley, head of zone office, phone: +603 9207 5701, email: [alistair.henley@ifrc.org](mailto:alistair.henley@ifrc.org),
  - Heikki Väättämoinen, acting head of disaster management unit, mobile: +6012 230 7895, email: [heikki.vaatamoinen@ifrc.org](mailto:heikki.vaatamoinen@ifrc.org)
  - Jeremy Francis, regional logistics coordinator, phone: +603 9207 5753, fax: +603 2168 8573, email: [jeremy.francis@ifrc.org](mailto:jeremy.francis@ifrc.org)
  - For pledges of funding: Penny Elghady, resource mobilization and PMER coordinator, phone: +603 9207 5775, email: [penny.elghady@ifrc.org](mailto:penny.elghady@ifrc.org).
  - Please send all funding pledges to [zonerm.asiapacific@ifrc.org](mailto:zonerm.asiapacific@ifrc.org).
  - For media enquiries: Francis Markus (Chengdu), communications delegate, mobile: +86 1391 0096 892, email : [francis.markus@ifrc.org](mailto:francis.markus@ifrc.org); or Jason Smith (KL), zone communications manager, mobile: +6012 387 0829, email: [jason.smith@ifrc.org](mailto:jason.smith@ifrc.org)

**[<Revised budget, interim financial report and map of affected areas below;  
click here to return to the title page>](#)**

**REVISED APPEAL BUDGET SUMMARY**

Annex 1

**CHINA : SICHUAN EARTHQUAKE****MDRCN003**

	<b>ORIGINAL</b>	<b>REVISED</b>	<b>VARIANCE</b>
<b><u>RELIEF NEEDS</u></b>			
Shelter (Tents)	28,000,000	24,610,307	-3,389,693
Construction Materials (Housing)	17,000,000	81,841,090	64,841,090
Clothing & Textiles	1,000,000	3,171,287	2,171,287
Food	5,000,000	3,500,000	-1,500,000
Water & Sanitation	120,000	2,121,383	2,001,383
Medical & First Aid	740,000	845,424	105,424
Teaching Materials	500,000		-500,000
Utensils & Tools	3,500,000		-3,500,000
Other Supplies & Services	11,200,000	9,406,822	-1,793,178
<b>Total Relief Needs</b>	<b>67,060,000</b>	<b>125,496,313</b>	<b>58,436,313</b>
<b><u>CAPITAL EQUIPMENT</u></b>			
Land & Buildings		2,550,000	2,550,000
Vehicles Purchase	90,000	260,750	170,750
Computers & Telecom Equipment	40,000	59,585	19,585
Office/Household Furniture & Equip.	120,000	123,279	3,279
<b><u>TRANSPORT, STORAGE &amp; VEHICLES</u></b>			
Storage - Warehouse		28,775	28,775
Distribution & Monitoring (including Air Transport)	18,000,000	11,193,678	-6,806,322
Transport & Vehicles Costs	350,000	1,054,089	704,089
<b><u>PERSONNEL</u></b>			
International Staff	2,130,000	4,354,407	2,224,407
National Staff	428,000	4,060,688	3,632,688
National Society Staff	48,000	1,620,736	1,572,736
Consultants	108,000	192,343	84,343
<b><u>WORKSHOPS &amp; TRAINING</u></b>			
Workshops & Training	150,000	2,960,857	2,810,857
<b><u>GENERAL EXPENSES</u></b>			
Travel	600,000	511,703	-88,297
Information & Public Relations	108,000	1,101,273	993,273
Office running costs	360,000	298,436	-61,564
Communication Costs	246,000	190,362	-55,638
Professional Fees	319,400	100,032	-219,368
Financial Charges	9,000	5,000	-4,000
Other General Expenses	288,000	78,409	-209,591
<b><u>PROGRAMME SUPPORT</u></b>			
Programme Support - PSR (6.5% of total)	6,288,274	10,861,654	4,573,380
<b>Total Operational Needs</b>	<b>29,682,674</b>	<b>41,606,055</b>	<b>11,923,381</b>
<b>Total Appeal Budget (Cash &amp; Kind)</b>	<b>96,742,674</b>	<b>167,102,368</b>	<b>70,359,694</b>
<b>(Less) : Available Resources</b>		<b>84,442,730</b>	
<b>Net Request</b>	<b>96,742,674</b>	<b>82,659,638</b>	

**REVISED APPEAL BUDGET SUMMARY**  
**CHINA : SICHUAN EARTHQUAKE**

Annex 2  
MDRCN003

<b>Emergency Relief Phase</b>		<b>Total cost CHF</b>
<b>Emergency Shelter</b>		<b>46,029,990</b>
- Tents & Air Transport	34,721,435	
- Base Camp	1,082,550	
- Quilts	2,883,861	
- Hygiene kits	3,842,144	
- Food parcels	3,500,000	
<b>Health &amp; Care</b>		<b>251,959</b>
- First Aid Kits	251,959	
<b>Watsan &amp; ERU</b>		<b>3,938,713</b>
<b>Other costs</b>		<b>3,659,186</b>
- Personnel, Training, Vehicles & Admin	3,659,186	
<b>Total Expenditure</b>		<b>53,879,848</b>

<b>Recovery Phase</b>	<b>No.of Units</b>	<b>Cost per unit</b>	<b>Total cost</b>	<b>Total cost CHF</b>
<b>Shelter reconstruction (Housing)</b>				<b>89,695,409</b>
- Village Home Construction (4 townships) (includes contribution of materials for each family, monitoring & personnel costs)	22,540	3,979	89,695,409	
<b>Health and Care &amp; Psychosocial support</b>				<b>2,765,202</b>
- Psychosocial Support & Awareness (IEC)	21 Villages		1,322,000	
- Community Based Health			616,800	
- Health in Emergency (training & personnel costs)			826,402	
<b>Water and Sanitation &amp; Hygiene promotion</b>				<b>3,715,976</b>
- Rehabilitation of water and sanitation facilities	5,669	387	2,193,903	
- Personnel, Training, Logistics & other costs			1,522,073	
<b>Livelihoods</b>				<b>8,349,120</b>
- Unconditional Cash Grant/Vulnerable families	5,400	618	3,337,200	
- Cash Grant to replace livelihoods assets	9,000	256	2,304,000	
- Training & workshops, Personnel & other costs			2,707,920	
<b>Disaster Management</b>				<b>4,438,503</b>
- DP Centers	3	946,168	2,838,503	
- Training & workshops, Personnel & other costs	4	400,000	1,600,000	
<b>Coordination &amp; Management</b>				<b>4,258,310</b>
- Capital Equipment			172,373	
- Transport, Storage & vehicles			179,650	
- Personnel (delegates, staff & consultants)			2,596,800	
- Training & workshops			266,790	
- General expenses (office running costs & travel)			1,042,697	
<b>Total Budget</b>				<b>113,222,520</b>
<b>TOTAL REVISED BUDGET</b>				<b>167,102,368</b>

\*\* NOTE : Programme Support Recovery (PSR) has been apportioned under each sector.

# International Federation of Red Cross and Red Crescent Societies

MDRCN003 - China - Sichuan Earthquake

Interim Financial Report

Selected Parameters	
Reporting Timeframe	2008/5-2009/7
Budget Timeframe	2008/5-2010/12
Appeal	MDRCN003
Budget	APPEAL

All figures are in Swiss Francs (CHF)

## I. Consolidated Response to Appeal

	Goal 1: Disaster Management	Goal 2: Health and Care	Goal 3: Capacity Building	Goal 4: Principles and Values	Coordination	TOTAL
<b>A. Budget</b>	<b>167,102,368</b>	<b>0</b>			<b>0</b>	<b>167,102,368</b>
<b>B. Opening Balance</b>	<b>0</b>	<b>0</b>			<b>0</b>	<b>0</b>

### Income

#### Cash contributions

American Government	520,000					520,000
American Red Cross	26,717,424					26,717,424
Australian Red Cross	6,664,647					6,664,647
Australian Red Cross (from Australian Government)	995,500					995,500
Austria - Private Donors	485					485
Belgium Red Cross (Flanders)	93,682					93,682
Belgium Red Cross (Flanders) (from Belgian Federal Government)	36,523					36,523
Brazil - Private Donors	6,373					6,373
British Red Cross	2,842,905					2,842,905
Bulgarian Red Cross	5,000					5,000
Cambodia - Private Donors	170					170
Canada - Private Donors	5,200					5,200
Canadian Red Cross	9,422,017					9,422,017
Canadian Red Cross (from Canadian Government)	17,816,762					17,816,762
China - Private Donors	32					32
Croatian Red Cross	24,882					24,882
Czech Red Cross	10,202					10,202
Danish Red Cross	22,289					22,289
Danish Red Cross (from Danish Government)	670,030					670,030
DELL Direct Giving Campaign	89,867					89,867
Estonia Red Cross	4,035					4,035
Finnish Red Cross	418,224					418,224
Finnish Red Cross (from Finnish Government)	692,936					692,936
France - Private Donors	2,668					2,668
French Red Cross	75,358					75,358
Germany - Private Donors	121					121
Germany - Private Donors (from Switzerland - Private Donors)	100					100
Germany Red Cross	167,633					167,633
Great Britain - Private Donors	22,503					22,503
Greek Government	327,000					327,000
IATA	8,650					8,650
Icelandic Red Cross (from Icelandic Government)	109,646					109,646
ICRC (from Unidentified donor)	153					153
Indian Red Cross	32,773					32,773
India - Private Donors	5,040					5,040
Indonesia - Private Donors	2,209					2,209
Infineum UK Ltd	70,413					70,413
Ireland - Private Donors	1,256					1,256
Irish Government	1,627,000					1,627,000
Irish Red Cross	346,715					346,715
Italian Govt Bilateral Emergency Fund	1,612,150					1,612,150
Japanese Government	1,785,000					1,785,000
Japanese Red Cross	26,062,252					26,062,252
Japan - Private Donors	3,150					3,150

# International Federation of Red Cross and Red Crescent Societies

MDRCN003 - China - Sichuan Earthquake

Interim Financial Report

Selected Parameters	
Reporting Timeframe	2008/5-2009/7
Budget Timeframe	2008/5-2010/12
Appeal	MDRCN003
Budget	APPEAL

All figures are in Swiss Francs (CHF)

<i>Lithuanian Red Cross</i>	976			976
<i>Luxembourg Government</i>	104,900			104,900
<i>Malaysian Red Crescent</i>	10,546			10,546
<i>Malaysia - Private Donors</i>	1,780			1,780
<i>Mauritius Red Cross</i>	191			191
<i>Monaco Red Cross</i>	114,914			114,914
<i>Netherlands - Private Donors</i>	8,335			8,335
<i>Netherlands Red Cross</i>	1,025,922			1,025,922
<i>Netherlands Red Cross (from Netherlands Government)</i>	813,500			813,500
<i>New York Office (from Adams Street Partners)</i>	3,000			3,000
<i>New York Office (from Alcatel Lucent)</i>	157,661			157,661
<i>New York Office (from Applied Materials)</i>	15,686			15,686
<i>New York Office (from Bechtel Group Foundation)</i>	60,735			60,735
<i>New York Office (from Black Rock)</i>	53,573			53,573
<i>New York Office (from Citadel Investment group)</i>	46,937			46,937
<i>New York Office (from Codexis)</i>	1,763			1,763
<i>New York Office (from EMC Corp.)</i>	80,360			80,360
<i>New York Office (from Fibrogen)</i>	10,961			10,961
<i>New York Office (from Genzyme Corporation)</i>	11,786			11,786
<i>New York Office (from Heinz)</i>	105,107			105,107
<i>New York Office (from Hospira)</i>	105,107			105,107
<i>New York Office (from Huber)</i>	52,554			52,554
<i>New York Office (from Jones apparel Group)</i>	22,975			22,975
<i>New York Office (from Kraft Foods)</i>	157,500			157,500
<i>New York Office (from Mellon Bank)</i>	26,787			26,787
<i>New York Office (from Monsanto Foundation)</i>	56,398			56,398
<i>New York Office (from Motorola Foundation)</i>	30,644			30,644
<i>New York Office (from New York Life)</i>	125,345			125,345
<i>New York Office (from Otis LG Elevator Co)</i>	7,143			7,143
<i>New York Office (from Schering Plough)</i>	29,309			29,309
<i>New York Office (from THERMO FISCHER)</i>	21,429			21,429
<i>New York Office (from United States - Private Donors)</i>	49,610			49,610
<i>New York Office (from United Technologies)</i>	249,496			249,496
<i>New York Office (from Yahoo)</i>	8,572			8,572
<i>New Zealand Red Cross</i>	375,046			375,046
<i>New Zealand Red Cross (from New Zealand Government)</i>	664,365			664,365
<i>Nigeria private donors</i>	1,024			1,024
<i>Norwegian Red Cross</i>	87,122			87,122
<i>Norwegian Red Cross (from Norwegian Government)</i>	373,383			373,383
<i>Office of the Representative of the Dalai Lama</i>	52,671			52,671
<i>On Line donations</i>	760,197			760,197
<i>OPEC Fund For Int-l Development</i>	1,158,078			1,158,078
<i>Other</i>	14,304			14,304
<i>Qatar Red Crescent</i>	59,400			59,400
<i>Romanian Red Cross</i>	58,857			58,857
<i>Royal &amp; Sun Alliance</i>	12,714			12,714
<i>Russia - Private Donors</i>	2,686			2,686
<i>Singapore - Private Donors</i>	9,975			9,975
<i>Singapore Red Cross</i>	114,048			114,048
<i>Slovenia Government</i>	161,500			161,500
<i>South Africa Government</i>	193,050			193,050
<i>South Africa - Private Donors</i>	361			361

# International Federation of Red Cross and Red Crescent Societies

MDRCN003 - China - Sichuan Earthquake

Interim Financial Report

Selected Parameters	
Reporting Timeframe	2008/5-2009/7
Budget Timeframe	2008/5-2010/12
Appeal	MDRCN003
Budget	APPEAL

All figures are in Swiss Francs (CHF)

<i>Spain - Private Donors</i>	1,985				1,985
<i>Sri Lanka Red Cross</i>	3,250				3,250
<i>Stavros Niarchos Foundation</i>	260,000				260,000
<i>Sweden Red Cross</i>	165,481				165,481
<i>Sweden Red Cross (from Swedish Government)</i>	342,400				342,400
<i>Swedish - Private Donors</i>	32				32
<i>Switzerland - Private Donors</i>	31,036				31,036
<i>Thailand - Private Donors</i>	5,200				5,200
<b>Total</b>	<b>51,000</b>				<b>51,000</b>
<i>Turkish Red Crescent</i>	5,264				5,264
<i>United Arab Emirates - Private Donor</i>	1,115				1,115
<i>United Arab Emirates Red Crescent</i>	20,981				20,981
<i>United States - Private Donors</i>	158,571				158,571
<i>United Technologies</i>	262,500				262,500
<i>United Technologies (from United States - Private Donors)</i>	5,250				5,250
<i>UN Staff Council / UNOG</i>	13,631				13,631
<i>VERF/WHO Voluntary Emergency Relief</i>	4,400				4,400
<b>C1. Cash contributions</b>	<b>108,323,353</b>				<b>108,323,353</b>
<b>Outstanding pledges (Revalued)</b>					
<i>American Red Cross</i>	16,196,955				16,196,955
<i>British Red Cross</i>	2,307,829				2,307,829
<i>Canadian Red Cross</i>	6,602,679				6,602,679
<i>Cook Islands Red Cross</i>	71				71
<i>New York Office (from PricewaterhouseCoopers)</i>	294,112				294,112
<b>C2. Outstanding pledges (Revalued)</b>	<b>25,401,645</b>				<b>25,401,645</b>
<b>Inkind Goods &amp; Transport</b>					
<i>Belgium Red Cross (Flanders)</i>	134,228				134,228
<i>British Red Cross</i>	2,589,652				2,589,652
<i>Canadian Government</i>	249,696				249,696
<i>Canadian Red Cross</i>	2,247,991				2,247,991
<i>Danish Red Cross</i>	1,395,009				1,395,009
<i>Finnish Red Cross</i>	886,681				886,681
<i>Germany Red Cross</i>	1,183,335				1,183,335
<i>Japanese Red Cross</i>	3,217,992				3,217,992
<i>Netherlands Red Cross</i>	3,662,744				3,662,744
<i>Norwegian Red Cross</i>	1,889,444				1,889,444
<i>Spanish Red Cross</i>	695,552				695,552
<b>C3. Inkind Goods &amp; Transport</b>	<b>18,152,323</b>				<b>18,152,323</b>
<b>Inkind Personnel</b>					
<i>American Red Cross</i>	57,493				57,493
<i>Australian Red Cross</i>	57,200				57,200
<i>Canadian Red Cross</i>	24,640				24,640
<i>Germany Red Cross</i>	15,840				15,840
<i>Other</i>	26,107				26,107
<b>C4. Inkind Personnel</b>	<b>181,280</b>				<b>181,280</b>
<b>Other Income</b>					
<i>Miscellaneous Income</i>	1,024				1,024
<i>Services</i>	-92,071				-92,071
<b>C5. Other Income</b>	<b>-91,048</b>				<b>-91,048</b>
<b>C. Total Income = SUM(C1..C5)</b>	<b>151,967,553</b>	<b>0</b>		<b>0</b>	<b>151,967,553</b>
<b>D. Total Funding = B + C</b>	<b>151,967,553</b>	<b>0</b>		<b>0</b>	<b>151,967,553</b>
<b>Appeal Coverage</b>	<b>91%</b>	<b>#DIV/0</b>		<b>#DIV/0</b>	<b>91%</b>

# International Federation of Red Cross and Red Crescent Societies

MDRCN003 - China - Sichuan Earthquake

Interim Financial Report

Selected Parameters	
Reporting Timeframe	2008/5-2009/7
Budget Timeframe	2008/5-2010/12
Appeal	MDRCN003
Budget	APPEAL

All figures are in Swiss Francs (CHF)

## II. Balance of Funds

	Goal 1: Disaster Management	Goal 2: Health and Care	Goal 3: Capacity Building	Goal 4: Principles and Values	Coordination	TOTAL
B. Opening Balance	0	0			0	0
C. Income	151,967,553	0			0	151,967,553
E. Expenditure	-77,457,759					-77,457,759
F. Closing Balance = (B + C + E)	74,509,794	0			0	74,509,794

# International Federation of Red Cross and Red Crescent Societies

MDRCN003 - China - Sichuan Earthquake

Interim Financial Report

Selected Parameters	
Reporting Timeframe	2008/5-2009/7
Budget Timeframe	2008/5-2010/12
Appeal	MDRCN003
Budget	APPEAL

All figures are in Swiss Francs (CHF)

## III. Budget Analysis / Breakdown of Expenditure

Account Groups	Budget	Expenditure					TOTAL	Variance
		Goal 1: Disaster Management	Goal 2: Health and Care	Goal 3: Capacity Building	Goal 4: Principles and Values	Coordination		
A							B	A - B
<b>BUDGET (C)</b>	<b>167,102,368</b>	<b>0</b>	<b>0</b>	<b>0</b>	<b>0</b>	<b>167,102,368</b>		
<b>Supplies</b>								
Shelter - Relief	24,610,307	23,527,757				23,527,757	1,082,550	
Shelter - Transitional		1,082,550				1,082,550	-1,082,550	
Construction Materials	81,841,090						81,841,090	
Clothing & textiles	3,171,287	2,809,536				2,809,536	361,751	
Food	3,500,000						3,500,000	
Water & Sanitation	2,121,383	722				722	2,120,661	
Medical & First Aid	845,424	14,894				14,894	830,530	
Utensils & Tools		3,661				3,661	-3,661	
Other Supplies & Services	9,406,822	2,024,838				2,024,838	7,381,984	
ERU		3,429,933				3,429,933	-3,429,933	
<b>Total Supplies</b>	<b>125,496,313</b>	<b>32,893,891</b>				<b>32,893,891</b>	<b>92,602,422</b>	
<b>Land, vehicles &amp; equipment</b>								
Land & Buildings	2,550,000						2,550,000	
Vehicles	260,750	128,874				128,874	131,876	
Computers & Telecom	59,585	51,340				51,340	8,245	
Office/Household Furniture & Equipm.	123,279	18,381				18,381	104,898	
Others Machinery & Equipment		3,662				3,662	-3,662	
<b>Total Land, vehicles &amp; equipment</b>	<b>2,993,614</b>	<b>202,256</b>				<b>202,256</b>	<b>2,791,358</b>	
<b>Transport &amp; Storage</b>								
Storage	28,775	40,861				40,861	-12,086	
Distribution & Monitoring	11,193,678	11,197,523				11,197,523	-3,845	
Transport & Vehicle Costs	1,054,089	64,176				64,176	989,913	
<b>Total Transport &amp; Storage</b>	<b>12,276,542</b>	<b>11,302,559</b>				<b>11,302,559</b>	<b>973,983</b>	
<b>Personnel</b>								
International Staff	4,354,407	1,019,993				1,019,993	3,334,415	
Regionally Deployed Staff		361				361	-361	
National Staff	4,060,688	158,428				158,428	3,902,260	
National Society Staff	1,620,736	8,109				8,109	1,612,627	
Consultants	192,342	91,946				91,946	100,396	
<b>Total Personnel</b>	<b>10,228,173</b>	<b>1,278,836</b>				<b>1,278,836</b>	<b>8,949,337</b>	
<b>Workshops &amp; Training</b>								
Workshops & Training	2,960,857	92,896				92,896	2,867,961	
<b>Total Workshops &amp; Training</b>	<b>2,960,857</b>	<b>92,896</b>				<b>92,896</b>	<b>2,867,961</b>	
<b>General Expenditure</b>								
Travel	511,703	145,232				145,232	366,471	
Information & Public Relation	1,101,273	47,480				47,480	1,053,793	
Office Costs	298,436	61,616				61,616	236,820	
Communications	190,362	23,861				23,861	166,501	
Professional Fees	100,032	103,251				103,251	-3,219	
Financial Charges	5,000	52,234				52,234	-47,234	
Other General Expenses	78,409	7,028				7,028	71,381	
<b>Total General Expenditure</b>	<b>2,285,216</b>	<b>440,702</b>				<b>440,702</b>	<b>1,844,514</b>	
<b>Contributions &amp; Transfers</b>								
Cash Transfers National Societies		25,847,513				25,847,513	-25,847,513	
<b>Total Contributions &amp; Transfers</b>		<b>25,847,513</b>				<b>25,847,513</b>	<b>-25,847,513</b>	
<b>Programme Support</b>								
Program Support	10,861,654	4,893,529				4,893,529	5,968,125	
<b>Total Programme Support</b>	<b>10,861,654</b>	<b>4,893,529</b>				<b>4,893,529</b>	<b>5,968,125</b>	
<b>Services</b>								
Services & Recoveries		500,691				500,691	-500,691	

**International Federation of Red Cross and Red Crescent Societies**

MDRCN003 - China - Sichuan Earthquake

Interim Financial Report

Selected Parameters	
Reporting Timeframe	2008/5-2009/7
Budget Timeframe	2008/5-2010/12
Appeal	MDRCN003
Budget	APPEAL

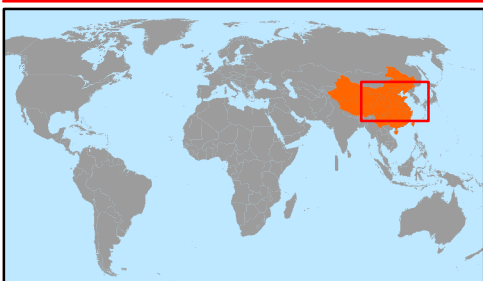
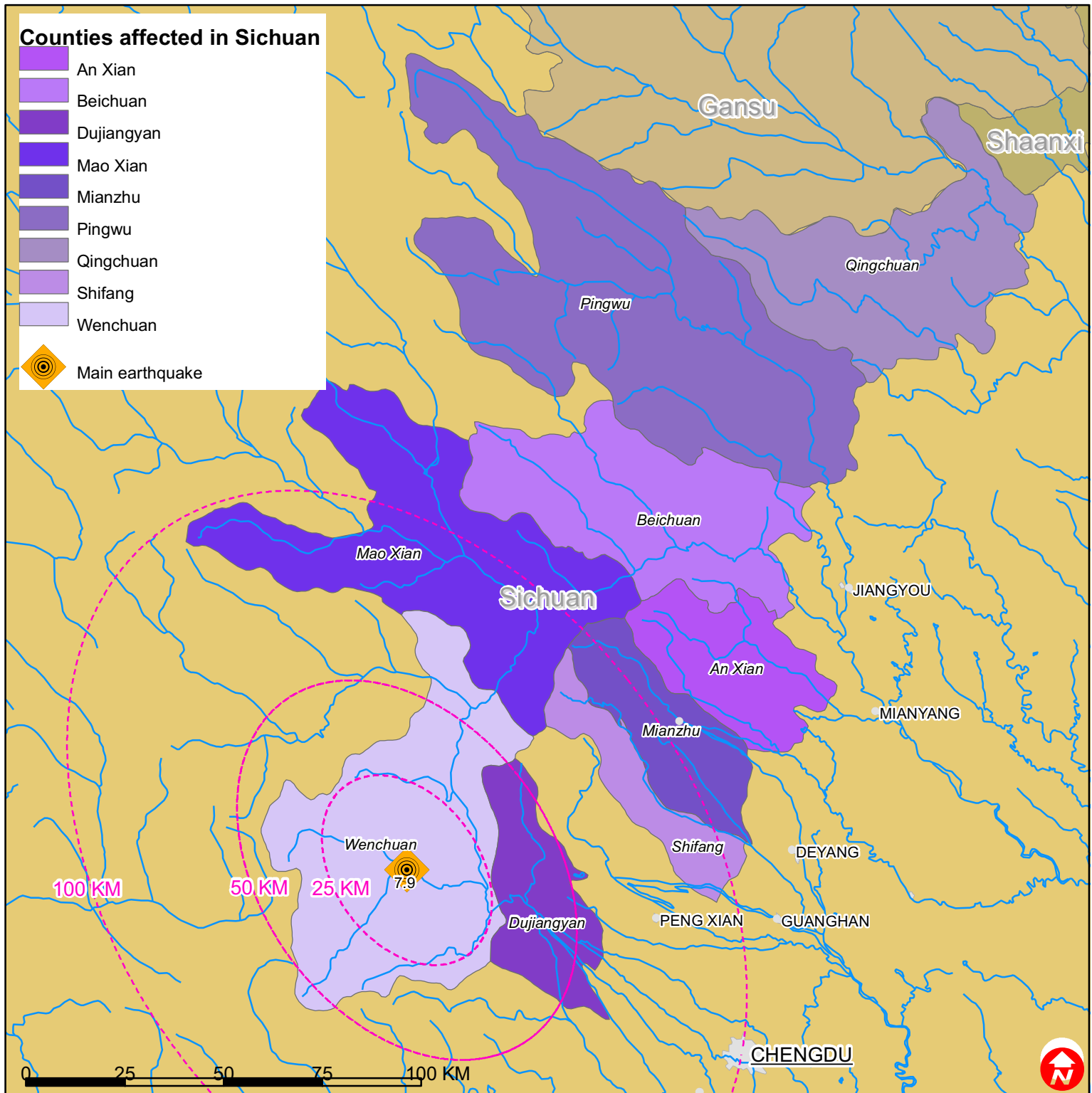
All figures are in Swiss Francs (CHF)

**III. Budget Analysis / Breakdown of Expenditure**

Account Groups	Budget	Expenditure					TOTAL	Variance
		Goal 1: Disaster Management	Goal 2: Health and Care	Goal 3: Capacity Building	Goal 4: Principles and Values	Coordination		
A							B	A - B
<b>BUDGET (C)</b>		<b>167,102,368</b>	<b>0</b>			<b>0</b>	<b>167,102,368</b>	
Shared Services		750					750	-750
<b>Total Services</b>		<b>501,441</b>					<b>501,441</b>	<b>-501,441</b>
<b>Operational Provisions</b>								
Operational Provisions		4,136					4,136	-4,136
<b>Total Operational Provisions</b>		<b>4,136</b>					<b>4,136</b>	<b>-4,136</b>
<b>TOTAL EXPENDITURE (D)</b>	<b>167,102,368</b>	<b>77,457,759</b>					<b>77,457,759</b>	<b>89,644,609</b>
<b>VARIANCE (C - D)</b>		<b>89,644,609</b>					<b>89,644,609</b>	



# China: Earthquake



The maps used do not imply the expression of any opinion on the part of the International Federation of the Red Cross and Red Crescent Societies or National Societies concerning the legal status of a territory or of its authorities.

Map data sources: ESRI, DEVINFO, GIST, CIESIN, International Federation - MDRCN003EAREV.mxd