

Operations update



International Federation
of Red Cross and Red Crescent Societies

China: Sichuan earthquake

Emergency appeal n° MDRCN003
GLIDE n° EQ-2008-00062-CHN
Operations Update 25
2 December 2009

Period covered by this update: 1 August- 31 October 2009.

Appeal target (current): CHF 167,102,368 (USD 137.7 million or EUR 110 million)

Appeal coverage: With contributions received to date, in cash and kind, the appeal is currently approximately 91 per cent covered. <click [here](#) for interim financial report or [here](#) for contact details>

Appeal history:

- A revised emergency appeal was launched on 20 November 2008 for 167.1 million (USD 137.7 million or EUR 110 million) to assist 200,000 families (up to 1,000,000 people) for 31 months.
- An emergency appeal was launched on 30 May 2008 for CHF 96.7 million (USD 92.7 million or EUR 59.5 million) in response to the huge humanitarian needs and in recognition of the unique position of the Red Cross Society of China (RCSC) supported by Red Cross Red Crescent partners to deliver high quality disaster response and recovery programmes.
- A preliminary emergency appeal of CHF 20.1 million (USD 19.3 million and EUR 12.4 million) was issued on 15 May 2008 to support the RCSC to assist around 100,000 people affected by the earthquake for 12 months.
- CHF 250,000 (USD 240,223 or EUR 155,160) was allocated from the International Federation's Disaster Relief Emergency Fund (DREF) on 12 May 2008, to support the RCSC to immediately start assessments of the affected areas and distribute relief items.



World First Aid Day on 12 September was celebrated at Xiaode Middle School, a newly reconstructed school after the earthquake, in Mianzhu County. Students practising cardiopulmonary resuscitation (CPR) techniques at the launching of first aid training as part of community-based health and first aid in Mianzhu County.

Summary: The International Federation shelter support programme is expected to commence the distribution of funds for all beneficiaries in December. This has come after significant set-backs and delays throughout 2009, but negotiations in recent weeks and involvement of the Red Cross Society of China's (RCSC) top leadership and the central government of China have now led to an agreed way forward.

After consultation between the International Federation's head of regional office and the RCSC senior leadership, the State Council in Beijing was made aware of the situation and intervened with the local government to try to ensure that the programme could be implemented urgently. This was followed by a visit to Sichuan by RCSC senior leadership to discuss with local government leaders and the Red Cross branches how to move the programme into its final stage. It was confirmed then that the distribution of funds can only commence when all 21 township beneficiary lists are finalized. Finalization of the remaining 15 township lists is set for late November and will assist in paving the way toward fund distribution, expected to take place in December. A final, limited second distribution should occur before the end of December 2009 for any families

whose information is unavailable in time for the first distribution.

Regarding the livelihoods programme, the programme finally commenced in September 2009. As reported in the last update, a meeting on 16 July between RCSC, the International Federation, main donors (British Red Cross and Japanese Red Cross) and partners was held to reach a common understanding of the programme and to map out and move forward with a new plan. In accordance to the local government's request that the livelihoods programme begin only after the completion of shelter reconstruction in September, a kick-off meeting was held in Chengdu on 26 August with all stakeholders to draft a new plan of action. According to the new plan, which has since been approved, both microfinance and vocational/business training will be implemented. A new livelihoods delegate has arrived to replace the previous delegate whose mission has ended.

A project agreement has been signed to support livelihoods projects in the affected areas. Further agreements with International Labour Organization (ILO), for vocational and business training, and PlaNet Finance, for microfinance support, have also been signed this month. Implementation of the programme will begin with assessments in December conducted jointly with the Red Cross partners, ILO and PlaNet Finance. Assessment questionnaires on training needs and microfinance are being reviewed and finalized.

Health and psycho social (PSP) programmes are ongoing with project agreements in support of first aid and PSP activities being reviewed by RCSC. A health coordination meeting between RCSC and the International Federation was held in Chengdu on 21-24 September. The Yunnan branch of the RCSC has been designated as the International Federation's counterpart for psychological support as they are strong implementers of PSP activities in their region. They will implement the PSP programmes in Sichuan with the focus area in Mianzhu county. Since the introduction of CBHFA in China at the end of 2008, community-based health and first aid activities have commenced within the RCSC. Adaptation of all PSP/CBHFA materials and toolkits into Chinese is in process. Joint activities of the International Federation and the Sichuan branch of the RCSC for World First Aid Day included activities in five prefectures. Activities will last for three months and include first aid trainings, simulation of disasters and sharing first aid knowledge with the general public.

A project agreement for water and sanitation projects is being prepared and will outline in details the International Federation's commitment to support 53 per cent of a gravity-fed water supply system in Hanwang township. The plan is designed to supply clean drinking water to eight villages comprising of approximately 11,000 persons or 3,440 households. Additionally, planned negotiations with the Mianzhu Rural Energy Bureau will hopefully lay the foundation for a sanitation project of household biogas latrines in eight targeted villages. The International Federation's water and sanitation delegate is working with an engineering company on the technical design for the gravity-fed water supply system (GFS) supply system.

An assessment for CDBP support has been completed in Gansu and Shaanxi and the first CDBP/VCA trainings were conducted in Shaanxi for 30 Red Cross staff from both Shaanxi and Gansu Red Cross branches. The workshop aimed to prepare the provinces for community-based disaster preparedness (CDBP) projects in both respected provinces under the Sichuan earthquake appeal. Local Red Cross branches are now in the process of preparing for and conducting VCAs in the selected communities.

The Federation has agreed to support RCSC to build nine disaster preparedness (DP) centers (six in Sichuan, two in Gansu and one in Shaanxi). The local RCCS branches are working with their local governments to identify the land on which the centers can be built.

Two meetings have been conducted with the RCSC headquarters on the development of a domestic water and sanitation disaster response team. RCSC has showed great interest to develop their own capacity in emergency response to be able to use the water and sanitation emergency response unit equipment they received during the earthquake operation for future emergency response. A strategy meeting will be held in December with RCSC and six provinces which have water and sanitation emergency response unit donated equipment and further discussion on how best the International Federation can support RCSC on the development of water and sanitation emergency response capacity.

Budgets and plans of action for the International Federation's shelter support programme have changed in order to reflect the realities in Mianzhu county. Considerations of the situation and subsequent changes have been made through constant consultation with the RCSC, and through informal communications and updates with partner organization representatives.

A revised appeal incorporating all changes to the shelter support programme and all other International

Federation programmes will be completed in December 2009.

Many partner national societies have made contributions to the appeal: American Red Cross/American government, Australian Red Cross/Australian government, Belgian Red Cross/Belgian government, British Red Cross, Bulgarian Red Cross, Canadian Red Cross/Canadian government, Cook Islands Red Cross, Croatian Red Cross, Czech Red Cross, Danish Red Cross/Danish government, Estonian Red Cross, Finnish Red Cross/Finnish government, French Red Cross, German Red Cross, Icelandic Red Cross/ Icelandic government, Indian Red Cross, Iranian Red Crescent, Irish Red Cross/ Irish government, Japanese Red Cross/Japanese government, Lithuanian Red Cross, Malaysian Red Crescent, Mauritius Red Cross, Monaco Red Cross, Netherlands Red Cross/Netherlands government, New Zealand Red Cross/New Zealand government, Norwegian Red Cross/Norwegian government, Qatar Red Crescent, Romanian Red Cross, Singapore Red Cross, Spanish Red Cross, Sri Lanka Red Cross, Swedish Red Cross/ Swedish government, Turkish Red Crescent and United Arab Emirates Red Crescent Society, as well as contributions from American, Greek, Italian, Luxembourg, Slovenian and South Africa governments, OPEC Fund for International Development, the Stavros Niarchos Foundation and many corporate partners.

The Red Cross Society of China has also received many bilateral contributions of funding, including the following: Canadian Red Cross, Cambodian Red Cross, French Red Cross, German Red Cross, Japanese Red Cross, Republic of Korea Red Cross, Norwegian Red Cross, Pakistan Red Crescent, Singapore Red Cross, Spanish Red Cross, Swiss Red Cross, Thai Red Cross, Turkish Red Crescent and Viet Nam Red Cross. These contributions have been added to the various substantial resources raised domestically by the Red Cross Society of China in its national fundraising appeal.

The International Federation, on behalf of the Red Cross Society of China, would like to thank all partners for their generous response to this appeal.

The situation

An 8.0 magnitude earthquake devastated Wenchuan county and the surrounding areas of Sichuan, Gansu and Shaanxi provinces in western China on 12 May 2008. Today, the official death toll stands at over 87,449¹, 375,000 injured and millions displaced.

The disaster caused the initial displacement of up to 15 million people and today, many are still living in temporary shelters. Five million houses need to be built and this makes relief and reconstruction efforts of this magnitude comparable to rebuilding Sweden or major cities such as London or New Delhi.

While the country's initial response to the earthquake was extraordinary in light of the sheer scope of the earthquake, many challenges remain over one year on and the government has much to overcome in rising from the disaster and moving onto reconstruction and recovery, and sustainable social and economic development especially during the current economic slowdown.

Part of the government's plan in stimulating the country's economy and reduce high unemployment especially in rural areas involves the building of infrastructure; housing, schools, medical institutions and many other projects. In line with this, the government's target of completing housing reconstruction in earthquake zones by the end of the 2009, one year ahead of the original three-year plan, has meant an unexpectedly remarkable swift rate of reconstruction. Field observations suggest most centralized housing in rural areas is complete.

While reconstruction continues at full speed in the earthquake affected areas especially in Sichuan, there are still families especially those living in the more rural and mountainous areas that have not been able to start rebuilding their homes due to a lack of financial and human resources. Families that have managed to build their homes continue to face hardships due to the increased burden of debt. With unemployment adding to the increasing pressures faced by the rural poor, the country is putting all efforts to complete housing reconstruction within government enforced deadlines, whilst maintaining social harmony.

¹ No official statement by the government has been issued on the status of the 18,500 missing people. However, some media reports quote a death toll of more than 80,000 people. According to Xinhua news, 86,663 deaths alone were from Sichuan province.

Red Cross and Red Crescent action

Overview

The International Federation launched an emergency appeal in the immediate days after the disaster for support to the Red Cross Society of China (RCSC). Assessments in the following months led to a revised appeal for both relief and recovery activities. The International Federation's recovery support programme, which included shelter and community-based programmes such as water and sanitation, health, livelihoods, was agreed upon with partners in October and resulted in a revised appeal in November 2008.

The scale of the Red Cross operation, taking into account funding from the RCSC and International Federation and its partners, surpasses the 2004 tsunami operation (CHF 3.01 billion). Donations² received by the RCSC alone equals around CNY 19.1 billion³ (CHF 3.13 billion). International Federation and bilateral partners funds amount to CNY 1.5 billion (CHF 250 million), bringing total Movement-wide funds to CNY 20.5 billion (CHF 3.38 billion).

International humanitarian organizations have never before been allowed to carry out operations of this magnitude in China, and this brings along new opportunities and challenges. Besides the reconstruction of family homes, the national society is supporting the construction of 660 schools and more than 2,000 medical clinics and hospitals across Sichuan, Gansu and Shaanxi. Significantly, for the first time, it is also supporting several projects implemented by Chinese non-governmental organizations in the communities. These include the construction of an ecological village, orphanages and homes for the disabled and elderly etc.

Progress towards objectives

This is the International Federation's original plan, its objectives, sub-objectives, and activities were based on certain assumptions that were relevant at the time of the last revision in November 2008. The circumstances that led to the current situation in the shelter support programme were not anticipated. Thus, the overall structure of this programme has changed greatly. The new objectives for shelter reconstruction and the other integrated community-based programmes are in the final stages of completion and will be officially revised in a revised appeal in December 2009.

| Shelter reconstruction |
|------------------------------------------------------------------------------------------------------------------------------------------------------------------------------------------------------------------------------------------------------------------------------------------------------------------------------------------------------------------------------------------------------------------------------------------------------------------------------------------------------------------------------------------------------------------------------------------------------------------|
| Objective 1: (Recovery Phase: 7 to 31 months): To 22,540 ⁴ households of the most vulnerable earthquake-affected families in Jiulong, Zundao, Banqiao and possibly Xinglong townships of Mianzhu County to reconstruct their homes using the "owner-driven" reconstruction model. |
| Expected results <ul style="list-style-type: none">• Homeowners and local authorities have access to technical support to build earthquake-resistant homes.• Supplementary monitoring and quality control that reinforces and complements the government of China's monitoring and quality control to support homeowners and contractors to build earthquake resistant homes.• Homeowners receive necessary financial support to build earthquake-resistant homes.• Homeowners have the necessary information and knowledge to build earthquake-resistant homes. |

Overview

Since the revision of the appeal to support recovery activities in November 2008, implementation of the shelter support programme has undergone intermittent starts and stops. The first request by the local government to put the programme on hold was in January 2009 just before the Chinese spring festival. The authorities cited concerns about possible unrest within the communities related to perspectives of inequity in recovery support. This immediately had an effect on the plans to distribute cash grants to beneficiaries through the livelihoods support plan. It also directly affected the shelter support programme. After the holiday, they requested that the International Federation change the shelter support programme to take into consideration their concerns for equity between the 21 disaster's affected townships across Mianzhu County. After protracted discussions the RCSC senior leadership came to Sichuan during the visit of the International Federation's secretary general to broker a path forward with the Mianzhu and Deyang governments. It was then that the Memorandum of

² Based on the latest figures from RCSC Headquarters.

³ Includes RCSC HQ, RCSC provincial branches, Hong Kong and Macao Red Cross branches and Taiwan Red Cross Organization.

⁴ Previous reports and the draft shelter programme still address 17,540 households in three townships. As requested by the government of China, the International Federation has included a fourth township with another 5,000 households under this programme with the understanding that sufficient funding is available.

Understanding (MOU) with the original plan to support 17,540 households in three original townships was signed by the relevant parties.

However in March, once implementation plans and agreements had been drafted for the local government to sign, and an International Federation office was set up in Deyang, the programme was put on hold again due to some government regulations. The authorities again cited serious concerns of public unrest resulting from inequity in support to those in need throughout the area. This led to the International Federation closing its Deyang office and a period of negotiations leading up to the April partnership meeting in Hainan. The agreement resulting from the partnership meeting was to broaden the project scope to cover nearly 30 per cent of rural households across the 21 townships in Mianzhu county that require reconstruction of a home, as suggested by the Mianzhu county government. While this allowed for a wider coverage of support to those in need in the area, it also reduced the total amount per household in Red Cross support.



A joint International Federation and RCSC monitoring team visits newly constructed homes in Mianzhu County. Photo: International Federation.

In addition, the Jiangsu branch of the RCSC, which was the designated twinned provincial branch to this county, arranged for their staff to assist with monitoring and general programme support.

In May, significant progress was made to capture ground lost and an addendum to the Memorandum of Understanding was signed by International Federation, RCSC and the Mianzhu local governments on 13 May. By early June, the International Federation had advanced to the final stage of its shelter implementation plan prior to the distribution of cash grants to beneficiaries. A senior shelter delegate from the Asia Pacific zone office conducted an assessment in the townships and found housing construction quality to be satisfactory. The first tranche of shelter support funds from the International Federation was received by the Deyang branch of the RCSC in the beginning of June to be distributed to beneficiaries in June.

By late June, although beneficiary lists had been verified by authorities in the six townships, there were still some Government concerns about the remaining 15 townships.

During the month of July, dissemination information was prepared and revised programme documents were drafted in close cooperation between the International Federation, the Deyang and Mianzhu branches of the RCSC, the Jiangsu branch of the RCSC's monitoring team, and the RCSC headquarters offices in Deyang and Chengdu.

By the middle of August, significant changes were done in coordination with the government and a letter was sent to partners on 7 August. The International Federation coordinated donor replies and by the end of August donors unanimously agreed to the changes requested. This expanded the programme to cover over 50 per cent of rural reconstructed homes throughout all of Mianzhu County's 21 townships. The implications of the changes are listed below:

KEY CHANGES AND RESULTS

Selection criteria

- The changes in selection criteria implied that the earmarked funding for the remaining 15 townships had to be distributed among a much larger number of beneficiaries estimated to be around 50,000 beneficiaries.
- Instead of CNY 8,000 per beneficiary, it will be reduced to CNY 3,000 per beneficiary, while the amount remains the same in the six townships at CNY 10,000 per beneficiary.

Beneficiary list

- The Mianzhu government decided to recheck and re-verify all families that have applied to the government for reconstruction assistance. This nullifies beneficiary lists in the three original townships that the Federation had previously verified.
- The International Federation must wait for the new versions of beneficiary lists to be provided, and will verify beneficiary lists by checking the information with the banks and posting the lists publicly.

Cash grants distribution

- The overall timeframe for the distribution of Red Cross shelter support cash grants was pushed back to September due to the re-verifying of lists by the government and other requirements that have been placed on the programme.
- 21 townships must receive cash grants at the same time.
- Less impact (shelter support programme) per household in 15 townships as the cash grants are spread across a greater number of beneficiaries.
- Main focus of the shelter support programme will be on transferring much needed financial assistance to homeowners that will help them to repay loans and borrowed money that financed the rebuilding of their homes.

Monitoring

- Construction monitoring will commence after the cash grants are fully distributed at the request of the Mianzhu government.
- Construction monitoring will be reduced to visual inspection of a limited number of finished homes.
- Technical assistance and other homeowner education components of the programme are cancelled.
- Cash distribution monitoring will visit a limited number of finished homes.

The above was agreed to with the understanding that fund distribution would occur rapidly and smoothly in the month of September. On 29 August, the Mianzhu branch of the national society, along with the RCSC, the International Federation and the Deyang branch of the RCSC held an opening ceremony in Banqiao township to officially launch the International Federation's shelter support programme across six townships (which include the three original selected townships and three mountainous townships identified in the spring). Subsequently, after working closely with the Mianzhu branch of the RCSC, on 21 September, the beneficiary lists for these six townships were officially finalized covering 21,736 families.

The Deyang and Mianzhu branches of the RCSC had endeavored to distribute funds to beneficiaries in all 21 townships before the 1 October national holiday. Technical posters and dissemination fliers were completed and printed in anticipation of the first fund distribution to households. However, because the beneficiary lists in the remaining 15 townships are based on five specific selection criteria, which results in coverage for an estimated 50,000 households, the lists are relatively more difficult for local authorities to assemble. Consequently, the 15 township beneficiary lists were not prepared in time. Local Red Cross branches proposed to first distribute funds to the six townships, but the prefecture government requested that the Red Cross hold off distribution of funds until after the holidays due to newly raised concerns of equity between the various counties of Deyang prefecture.

In view of the continuous delays and changes to the implementation of the programme, the head of the International Federation's regional office in Beijing wrote a letter to the Ministry of Foreign Affairs in September. The RCSC leadership concurrently sent a letter to the Sichuan government, as well as discussed these issues with the Ministry of Foreign Affairs in Beijing, who subsequently referred the matter to the State Council in support of the shelter support programme. The RCSC received a positive reply from the State Council immediately after the 1 October holiday.

RCSC senior leadership then came to Sichuan to meet with locally-based RCSC leadership, local RCSC branch leadership and multiple levels of government officials. Since then, the International Federation has felt a new level of enthusiasm from all levels of RCSC and local government officials to complete the project in a timely manner. It is required that the remaining 15 township beneficiary lists are finalized by November and the first tranche of fund distributions will be completed by December. The second and final fund distribution is expected to commence before the end of the year for those beneficiaries who qualify but were not included in the first beneficiary list.

The International Federation is well prepared to distribute the funds of the shelter support programme. The beneficiary list and distribution lists for the six mountainous townships are finalized and printed. Dissemination materials and technical poster are ready for distribution. The first fund distribution is scheduled in December. After the distribution of funds, monitoring of house quality and cash distribution will be conducted. A second fund distribution is scheduled for December 2009 for any households that meet the selection criteria but were missed during the first distribution or are newly approved by the local authorities.

As mentioned in the 21 August operations update, there was a group of beneficiaries waiting to be approved by the provincial government to receive government grants. Once the government approves them, some of these families then qualify for the shelter support programme. The provincial government's response was that 15,000 of the 19,000 applicants can be approved, but the selection of which ones to approve was left to local authorities. The selection process will take time and may affect the timing of the second distribution.



Red Cross staff speaking to homeowners in June during the initial round of beneficiary list verification. Photo: Red Cross Society of China

Of the 124,358 rural homeowners reconstructing their homes across Mianzhu County, the International Federation's shelter support programme will now cover an estimated 67,000 households (54 per cent). Each selected beneficiary household will receive financial assistance from the Red Cross.

Technical and information support

Dissemination fliers and posters will be printed and distributed to households in Mianzhu and the surrounding areas by the end of the project. Dissemination fliers contain important information about the programme and assist in explaining the beneficiary selection criteria and who qualifies for Red Cross support. Content also includes information about the Red Cross Red Crescent Movement, beneficiary duties and responsibilities and the sources of funding.

In addition, the International Federation and local Red Cross branches have developed a dissemination plan that includes newspaper articles, a radio address, a TV interview of International Federation leadership, dissemination meetings between the local Red Cross and county and village leadership. The content for these various forms of media are similar to the dissemination flier content.

Lastly, high-quality graphic technical posters and handouts on techniques of earthquake-resistant construction were developed and printed. Their impact on the reconstruction effort shall be very limited as most houses have already completed reconstruction.

The original plan to develop technical trainings for beneficiaries on earthquake resistant housing included topics such as contract review, design parameters, selection of contractors, construction techniques and how to oversee contractors. Unfortunately, the original assumptions did not account for changes such as the rate of housing progressing more rapidly than anticipated, the programme scale expanding extensively and access to the field being restricted at times. By the time the addendum of the memorandum of understanding was signed in May, a majority of beneficiaries had already begun constructing their homes. The shelter team focused first on the technical information, education and communications materials and it was later agreed that the impact of the training programme would be too limited. Limitations faced by the International Federation in regards to providing technical trainings were referenced in the 7 August letter to involved donors.

Transparent and fair programme implementation

Significant limiting factors have been placed on construction monitoring and technical assistance from what was originally planned by the International Federation and the RCSC. By the time all funds have been fully distributed, over 95 per cent of the houses are expected to be completed. Therefore, there is a substantial reduction in the level of technical construction monitoring that is possible and relevant. Construction

monitoring will be limited to visual inspection of a small percentage of completed homes only after the distribution of funds.

Direct dissemination of information, home visits and monitoring visits have all been impacted by intermittent restrictions in access to the field. However, an assessment conducted by a senior shelter delegate from the Asia Pacific Zone office found the government system for monitoring construction and the housing construction quality in general to be satisfactory.

The Civil Affairs Bureau of Mianzhu County assists with verification by checking the lists to ensure the beneficiaries qualified for the subsidy provided by the Government of China which has many of the same basic criteria. Importantly, the Rural Credit Unions of each township check the list to ensure that names and account numbers are accurate. The International Federation database officer checks the list for errors and tracks any changes and inputs them into the International Federation database. Public posting of the lists are also expected. Final beneficiary lists are checked and stamped by Mianzhu branch of the RCSC and township governments, respectively.



World First Aid Day on 12 September was celebrated at Meigu Yi Autonomous Prefecture, which was mildly affected area by the earthquake. A trainer from Sunshine in Your Heart project is conducting training on Psychological First Aid for teachers. This is the first time Psychological First Aid has been provided as part of first aid training. Photo: Red Cross Society of China.

With a thorough multimedia dissemination plan, dissemination fliers and posters, and face-to-face meetings between the Red Cross and township and village leaders and meetings between village leaders and villagers, it is expected that a very high percentage of beneficiaries and non-beneficiaries in the area will understand who qualifies for assistance, what the assistance will be and for those who meet the programme criteria, the requirements and their responsibilities.

The signed distribution lists, public posting of the lists, bank statements, payment orders and other bank documents add to the transparency of the shelter programme. Construction monitoring and cash grant monitoring will begin once funds are distributed. This should occur in the fourth quarter of 2009 and the first quarter of 2010.

| |
|-----------------------------------------------------------------------------------------------------------------------------------------------------------------------------------------------------------------------------------------------------------------------------------------------------------------------------------------------------|
| I. Health and care |
| Objective 1 (Recovery Phase: 7 to 31 months): To reduce the vulnerability of the earthquake-affected population to public health risks through a community-based health (CBH) approach. |
| Expected results |
| <ul style="list-style-type: none"> • There is significantly increased knowledge how to prevent and manage public health risks among earthquake affected communities. • The knowledge and capacity of RCSC board members, staff and volunteers to coordinate, manage and implement programmes is significantly strengthened. |
| II. Psychosocial support |
| Objective 1 (Recovery Phase: 7 to 31 months): Improve the psychological resilience of the earthquake affected population. |
| Expected Result |
| <ul style="list-style-type: none"> • Earthquake-affected people are able to manage stress and overcome crisis in their communities, individually, and among their families. |

The psychological support programme has been running activities in Sichuan since the relief phase, and the toolkit has been introduced and demonstrated nation-wide within the RCSC with support from stakeholders and counterparts. In recent months, the Yunnan branch of the RCSC was designated as the International Federation's counterpart for PSP as they are strong implementers of PSP activities in their region. They will implement the PSP programmes in Sichuan with the focus area in Mianzhu County.

At the end of 2008, community-based health and first aid (CBHFA) was introduced in East Asia, and the RCSC sent many participants to the training, including many of those from the earthquake area. It was recently decided that the activities for this programme area will be conducted mainly through the RCSC headquarters linked with RCSC national training centre in Beijing. The project agreement for support from the

International Federation is still under negotiations, but some community based health and first aid activities have commenced within the RCSC.

In conjunction with World First Aid Day, the International Federation and the Sichuan branch of the RCSC conducted joint activities in five prefectures. International Federation staff attended the opening ceremonies of Guangyuan prefecture and Chengdu prefecture.

In Mianzhu, the ceremony was held at the Xiaode Middle School, where the International Federation and RCSC also launched its CBHFA programme in Mianzhu County which was covered by local media. Some 240 students and teachers attended a session demonstrating CPR and first aid methods such as tying bandages. First aid kits, safety books for students and mini-mannequins and other first aid teaching tools were donated to the school and local Red Cross branches.

The Sichuan Red Cross aims to reach out to some 10 million people affected by the earthquake through first aid and public awareness programmes. Also launched were activities to last three months which included first aid trainings, disaster simulation exercises and sharing first aid knowledge with the general public. The other three prefectures conducting activities are Mianyang, Ya'an and Abba.

Also in conjunction with WFAD, in Meigu County, Liangshan Yi Autonomous Prefecture, the Sichuan Red Cross and the International Federation conducted several PSP activities in four schools. In one school, about 35 teachers took part in a two-day first aid training that included psychological first aid (PFA) and physical first aid (FA). PFA is a new idea in the country and was introduced during the training.



PSP activities on 13 September were conducted at Texi Village Primary School, a school also affected by the earthquake, in Meigu Yi Autonomous Prefecture. Drawing, *origami* (paper folding) and games with balloons brought out many happy and smiling faces. International Federation.



In three other schools, Federation staff and RCSC volunteers ran activities for some 150 primary school children. The Yi minority children have never been exposed to these sorts of activities and found much joy in drawing, painting, games with balloons and *origami* (paper folding). The area was also mildly affected by the earthquake and many of these children were also distraught as a consequence of the disaster. The RCSC has a longer-term plan for PSP in the area.

The International Federation continues to test its PSP toolkits, and in September, 60 participants (teachers, Red Cross volunteers, students and government officials) participated in the trial in Ziyan Primary School.

| |
|-------------------------------------------------------------------------------------------------------------------------------------------------------------------------------------------------------------------------------------------------------------------------------------------------------------------------------------------------------------------------------------------------------------------------------------------------------|
| Water and sanitation, and hygiene promotion |
| Objective 1 (Recovery Phase: 7 to 31 months): To reduce vulnerability of earthquake-affected populations from water-borne diseases by improving access to safe water and sanitation facilities and empowering community based organizations on water governance. |
| Expected results <ul style="list-style-type: none"> • Communities have improved access to water and sanitation facilities according to minimum Sphere standards in three townships of Mianzhu County. • Communities and RCSC have skills and knowledge to identify problems and solutions involving water, sanitation and hygiene practice issues through participatory hygiene and sanitation transformation (PHAST). |

The aim of the water and sanitation recovery programme is to reduce the vulnerability of earthquake-affected populations from water-borne diseases by improving access to safe water and sanitation facilities and empowering community based organizations on water governance. The programme aims to follow the Chinese government policy of '3-in-1' meaning to integrate water, sanitation and hygiene promotion, which is also the approach of the Red Cross water and sanitation policy. It is planned that the Mianzhu branch of the RCSC will oversee the coordination of the hygiene promotion component with the centre for disease control of the health bureau or other suitable organizations.

This programme also experienced various delays during the past months. A project agreement for water and sanitation projects is being prepared and will outline in detail the International Federation's commitment to support 53 per cent of a gravity-fed water supply system in Hanwang Township. The plan is designed to supply clean drinking water to eight villages comprising of approximately 11,000 persons or 3,440 households. The project agreement and project documents are to follow.

Planned negotiations with the Mianzhu Rural Energy Bureau will hopefully lay the foundation for a sanitation project of household biogas latrines in eight targeted villages. The total numbers and beneficiaries and exact locations are still to be determined jointly with stakeholders.

| |
|--------------------------------------------------------------------------------------------------------------------------------------------------------------------------------------------------------------------------------------------------------------------------------------------------------------------------------------------------------------------------------------------------------------------------------------------------------------------------------------------------|
| Livelihoods |
| Objective 1: (Early Recovery Phase 6 to 12 months): To provide vulnerable families with enough income/resources to survive winter and start reconstructing their houses. |
| Expected results <ul style="list-style-type: none"> • Up to 15,000 vulnerable families receive support to generate their income or resources. • The vulnerable families start livelihoods activity and reconstruction of their houses by the spring of 2009. |
| (Reconstruction and Longer-Term Recovery Phase: 13 to 31 months): Objective 2: Vulnerable families have means (both skills and resources), to rehabilitate their livelihoods. Objective 3: Vulnerable families have sustainable livelihoods and develop their livelihoods strategy. |
| Expected results <ul style="list-style-type: none"> • The livelihoods needs and appropriate livelihoods interventions are developed by April 2009. • Up to 4,000 vulnerable people receive appropriate training to have a stable income source. • The necessary livelihoods assets are replaced or rehabilitated. • The vulnerable families will have at least one stable income source. • The people develop sustainable livelihoods. |

Overview

The livelihood programme aims to contribute to the recovery of the people affected by the earthquake in Mianzhu county and was developed based on needs of the affected people and taking into consideration the

livelihoods priorities of the Mianzhu government. Priority support will be targeted to farmers who no longer have access to farmlands and need a new livelihood as the first priority group and disabled people as the second priority group. In order to enable affected people to restart or start their livelihoods activities, the programme will provide financial support through microfinance together with vocational and/or business training to the target groups. The livelihoods plan of action was developed and finalised together with the RCSC and local authorities in late August, permission and commitment from the local authorities was received and the Project Agreement was signed in September. This programme also experienced various delays, as the shelter programme, during the past months.

Vocational/business training

The key partners for the vocational and business training are the Mianzhu Labour Bureau and International Labour Organization (ILO) which both have extensive experience in this field.

The training needs assessment will be conducted by the Mianzhu Labour Bureau with technical support from ILO to identify the training needs of the beneficiaries, and the local enterprises that are most expected to employ these people once trained.



Red Cross participants learn to conduct a VCA in the field during a training workshop held by the International Federation in Shaanxi. Photo: Red Cross Society of China.

A market survey will be conducted to achieve a high employment rate for beneficiaries after they receive training. The assessments will be conducted in December and the training will be provided from January 2010 to November 2010.

After the assessments, a feasible training plan will be developed to deliver training to up to 6,000 people in a given time frame. These trainings will be conducted by training institutions under the Mianzhu Labour Bureau.

Microfinance

The key partner for the microfinance component of the livelihoods programme is PlaNet Finance, an experienced international non-governmental organization with sound knowledge and experience in the microfinance field in China. PlaNet Finance will assess the finance and microfinance institutions that could serve as Red Cross partners and recommend an appropriate microfinance scheme such as loans, and loan guarantees, etc. The microfinance component of the livelihoods programme will be targeted to beneficiaries that do not have access to the existing loan scheme due to lack of collateral/guarantee, or their age, risk factors or unemployment status etc. The assessment will be conducted in December.

Assessments will help to identify the most vulnerable, their needs and how they can be supported after accessing vocational training and / or microfinance assistance. It will also help in further defining the selection criteria process.

| |
|----------------------------------------------------------------------------------------------------------------------------------------------------------------------------------------------------------------------------------------------------------------------------------------------------------------------|
| Disaster management |
| Objective 1 (Recovery Phase: 7 to 31 months): To reduce the vulnerability of the population in Sichuan Province in areas where village home reconstruction is taking place by improving community capacity to plan and implement appropriate risk reduction initiatives addressing their local hazards. |
| Expected results |
| <ul style="list-style-type: none"> • The affected Red Cross branches develop their capacities in community-based disaster management in future. • The affected communities learn how to respond during earthquakes and other disasters. |
| Objective 2 (Recovery Phase: 7 to 31 months): To reduce vulnerability of the population prior to the onset of natural disasters in affected areas of Gansu and Shaanxi provinces by improving community capacity to plan and implement appropriate risk reduction initiatives addressing their local hazards. |
| Expected results |
| <ul style="list-style-type: none"> • Volunteers and staff of the RCSC in Gansu and Shaanxi can provide improved risk analysis, including assessment of local vulnerabilities and capacities for effective disaster risk reduction and mitigation |

| |
|----------------------------------------------------------------------------------------------------------------------------------------------------------------------------------------------------------------------------------------|
| <p>measures.</p> <ul style="list-style-type: none"> Targeted communities in Gansu and Shaanxi have capacity to monitor local disaster risks and use their risk analysis to develop the institutional disaster planning. |
| <p>Objective 3 (Recovery Phase: 7 to 31 months): RCSC builds its capacity to effectively and quickly respond to emergencies in the future.</p> |
| <p>Expected results</p> <ul style="list-style-type: none"> RCSC develops three disaster preparedness centres in the affected areas. |

The Memorandum of Understanding for the community-based disaster preparedness (CDBP) and disaster preparedness centres for Gansu, Shaanxi and Sichuan Red Cross provinces has been signed. The International Federation will support RCSC to construct nine disaster preparedness centres in Sichuan, Shaanxi and Gansu and implement CDBP in 30 villages in Shaanxi and Gansu.

Plans of action and budgets for CDBP support have been developed for Gansu and Shaanxi and are awaiting final comments from the RCSC headquarters. In the process of developing these plans and budgets, the Gansu and Shaanxi Red Cross branches have conducted risk mapping analysis in the local areas to identify targeted communities under the CDBP project. A vulnerabilities and capacities assessment workshop was held in Shaanxi for 30 Red Cross participants from Gansu and Shaanxi. The local Red Cross branches are now preparing to conduct VCAs in the selected communities in the coming weeks.

The International Federation has agreed to support the RCSC to build nine disaster preparedness centres (six in Sichuan, two in Gansu and one in Shaanxi). Assessments were conducted in Gansu and Shaanxi and the local Red Cross branches are working with their respective local governments to obtain the land. Once land has been identified and allocated for the Red Cross branch, a land survey and the design of the disaster preparedness centres will be implemented.

Two meetings have been conducted with the RCSC headquarters on the development of water and sanitation emergency response teams that could be deployed within China for future emergencies. The RCSC has showed great interest to develop their capacity in this regard. A strategy meeting will be held in December with the RCSC and six provinces which have water and sanitation emergency response unit (ERU) equipment and further discussions on how best we can support the RCSC and a subsequent plan of action will be developed after the meeting.

Organizational development

In early August, International Federation finance/admin and logistics delegates conducted a training on the International Federation's finance, and procurement and logistics standards and processes to staff directly related in the implementation of International Federation projects from Deyang Red Cross and the recently-formed Mianzhu Red Cross branch.

On 18-21 August, RCSC headquarters organised a national training in Chengdu, which was jointly facilitated by RCSC and Federation finance, logistics and reporting staff. Over 40 RCSC staff from branches in four provinces participated in the training. The RCSC's online finance system which is being developed was demonstrated during the training and feedback and discussions were held in finding ways to enable the International Federation to access reports and to incorporate the Federation's chart of accounts into the system prior to the final stages of development.

Coordination and partnerships

The International Federation has been and will continue to support the RCSC in coordinating Red Cross Red Crescent Movement efforts. At the request of the RCSC leadership, the International Federation will continue to play an important role in coordinating Red Cross Red Crescent Movement support to the earthquake operations. The RCSC has requested that the Red Cross Red Crescent Movement take a unified approach towards responding to the needs of Red Cross beneficiaries and supporting the RCSC throughout the response.

The RCSC is still regularly involved in high level coordination meetings with government authorities, and has been closely involved in discussions with the Ministry of Construction regarding reconstruction planning.

Close coordination between the shelter support programme team and Build Change have been positive. The nine technical posters were jointly designed and have been distributed by Build Change in Mianzhu to homeowners, construction companies and posted inside construction material supply shops and handed out at

20 other sites around Sichuan. This collaboration is valued by the relevant parties as it helps with information sharing and the leveraging of additional resources.

The coordination efforts between the International Federation operations support team, the RCSC at all levels and relevant official agencies have been positive and have helped facilitate solutions towards reconstruction and recovery challenges.

Capacity of the Red Cross Society of China

RCSC was founded in 1904, becoming one of the first members of the International Federation in 1919. The mission of the RCSC is reflected in its law, acknowledged by the central and provincial governments, and is reflective of the good working relationship with the government, particularly in the fields of relief and health activities. Today with over 21 million members, a headquarters in Beijing and established provincial and municipality branches corresponding to state administrative units, the RCSC is well placed to act as a valuable auxiliary partner to the government in times of disaster.

In recent years, China has experienced many earthquakes, during which RCSC has conducted key relief activities. In addition, the RCSC has responded to massive disasters caused by typhoons, torrential rains and snow/ice in the past few years. Through these experiences, the RCSC has improved its response mechanisms to deliver assistance to affected individuals. When disaster strikes, RCSC branches at the provincial and local levels immediately launch local appeals for funding and collect items such as warm clothing to assist those affected by disasters.

The RCSC maintains a nationwide network of six regional disaster preparedness centres. These are essentially warehouses with stocks of relief supplies, but they also serve as focal points for training staff in disaster management, including logistics, report writing skills and first aid, tailored to different kinds of disasters.

Capacity of International Federation

The International Federation's East Asia regional office in Beijing is comprised of a head of office and technical specialists as well as skilled local staff in disaster management, health and care, planning, monitoring, evaluation and reporting (PMER), media and communications and finance. This office supports the East Asia region, which includes China, Mongolia and the Democratic People's Republic of Korea Red Cross Societies in annual and emergency programmes. The regional office is backed by a team of staff in the International Federation's Asia Pacific zone office in Kuala Lumpur, and relevant technical departments in Geneva.

The International Federation's operations support team in Chengdu, Sichuan province, provides support as necessary to the RCSC to implement the operation successfully. The International Federation's team consists of a head of reconstruction and recovery, technical delegates in shelter reconstruction, health and psychosocial support, water and sanitation, livelihoods, logistics, finance, and reporting. A strong team of national staff provides further support to the team to support the considerable number of national society staff and volunteers in the implementation of the programmes.

The International Federation's Chengdu office coordinates with the RCSC in Sichuan, local authorities and partner national society representatives to manage operation programme activities. The International Federation office in Chengdu reports to the East Asia regional office in Beijing, which continues to coordinate with the RCSC headquarters on all earthquake operational matters holding regular meetings with the RCSC senior management. Furthermore, the regional office in Beijing will also continue to directly oversee all Gansu and Shaanxi programming.

How we work

All International Federation assistance seeks to adhere to the [Code of Conduct for the International Red Cross and Red Crescent Movement and Non-Governmental Organizations \(NGOs\) in Disaster Relief](#) and is committed to the [Humanitarian Charter and Minimum Standards in Disaster Response \(Sphere\)](#) in delivering assistance to the most vulnerable.

The International Federation's activities are aligned with its Global Agenda, which sets out four broad goals to meet the Federation's mission to "improve the lives of vulnerable people by mobilizing the power of humanity".

Global Agenda Goals:

- Reduce the numbers of deaths, injuries and impact from disasters.
- Reduce the number of deaths, illnesses and impact from diseases and public health emergencies.
- Increase local community, civil society and Red Cross Red Crescent capacity to address the most urgent situations of vulnerability.
- Reduce intolerance, discrimination and social exclusion and promote respect for diversity and human dignity.

Contact information

For further information specifically related to this operation please contact:

- Red Cross Society of China: Mr. Wang Xiaohua, director of external relations department; email: rcsc@chineseredcross.org; phone: +86.10.6404.8366, fax +86.10.6402.9928.
- East Asia regional office in China: Mr. Carl Naucler, head of regional office, mobile: +86 10 6532 7162, email: carl.naucler@ifrc.org
- Sichuan Earthquake Operations Office in Chengdu: Mr. Frans Lommers, head of reconstruction and recovery, mobile: +86 136 9922 9695, email: frans.lommers@ifrc.org and Sheila Thornton, head of Chengdu office, mobile: +86 136 8849 7505, email: sheila.thornton@ifrc.org
- Federation zone office in Kuala Lumpur:
 - Alistair Henley, head of zone office, phone: +603 9207 5701, email: alistair.henley@ifrc.org,
 - Daniel Bomanos, operations coordinator, phone: +603 9207 5728; mobile: +6012 283 7305; email: daniel.bolanos@ifrc.org
 - Jeremy Francis, regional logistics coordinator, phone: +603 9207 5753, fax: +603 2168 8573, email: jeremy.francis@ifrc.org
 - For pledges of funding: Penny Elghady, resource mobilization and PMER coordinator, phone: +603 9207 5775, email: penny.elghady@ifrc.org.
 - Please send all funding pledges to zonerm.asiapacific@ifrc.org.
 - For media enquiries: Francis Markus (Chengdu), communications delegate, mobile: +86 1391 0096 892, email: francis.markus@ifrc.org; or Jason Smith (KL), zone communications manager, mobile: +6012 387 0829, email: jason.smith@ifrc.org

**[<Interim financial report and map of affected areas below;
click here to return to the title page>](#)**

International Federation of Red Cross and Red Crescent Societies

MDRCN003 - China - Sichuan Earthquake

Interim Financial Report

| Selected Parameters | |
|---------------------|----------------|
| Reporting Timeframe | 2008/5-2009/10 |
| Budget Timeframe | 2008/5-2010/12 |
| Appeal | MDRCN003 |
| Budget | APPEAL |

All figures are in Swiss Francs (CHF)

I. Consolidated Response to Appeal

| | Goal 1: Disaster Management | Goal 2: Health and Care | Goal 3: Capacity Building | Goal 4: Principles and Values | Coordination | TOTAL |
|---------------------------|-----------------------------|-------------------------|---------------------------|-------------------------------|------------------|--------------------|
| A. Budget | 155,910,895 | 7,194,363 | | | 3,997,110 | 167,102,368 |
| B. Opening Balance | 0 | 0 | | | 0 | 0 |

Income

Cash contributions

| | | | | | | |
|----------------------------------------------------------------|------------|-----------|--|--|---------|------------|
| American Government | 520,000 | | | | | 520,000 |
| American Red Cross | 26,717,424 | | | | | 26,717,424 |
| Australian Red Cross | 5,206,819 | 998,000 | | | 514,859 | 6,719,678 |
| Australian Red Cross (from Australian Government) | 995,500 | | | | | 995,500 |
| Austria - Private Donors | 485 | | | | | 485 |
| Belgium Red Cross (Flanders) | 93,682 | | | | | 93,682 |
| Belgium Red Cross (Flanders) (from Belgian Federal Government) | 36,523 | | | | | 36,523 |
| Brazil - Private Donors | 6,373 | | | | | 6,373 |
| British Red Cross | 2,792,155 | 50,750 | | | | 2,842,905 |
| Bulgarian Red Cross | 5,000 | | | | | 5,000 |
| Cambodia - Private Donors | 170 | | | | | 170 |
| Canada - Private Donors | 5,200 | | | | | 5,200 |
| Canadian Red Cross | 7,342,017 | 2,080,000 | | | | 9,422,017 |
| Canadian Red Cross (from Canadian Government) | 17,816,762 | | | | | 17,816,762 |
| Charities Aid Foundation | | 98,414 | | | | 98,414 |
| China - Private Donors | 32 | | | | | 32 |
| Croatian Red Cross | 24,882 | | | | | 24,882 |
| Czech Red Cross | 10,202 | | | | | 10,202 |
| Danish Red Cross | 10,749 | 11,539 | | | | 22,289 |
| Danish Red Cross (from Danish Government) | 154,622 | 515,408 | | | | 670,030 |
| DELL Direct Giving Campaign | 525 | | | | 89,342 | 89,867 |
| Estonia Red Cross | 4,035 | | | | | 4,035 |
| Finnish Red Cross | 418,224 | | | | | 418,224 |
| Finnish Red Cross (from Finnish Government) | 692,936 | | | | | 692,936 |
| France - Private Donors | 2,668 | | | | | 2,668 |
| French Red Cross | 381,918 | | | | | 381,918 |
| Germany - Private Donors | 121 | | | | | 121 |
| Germany - Private Donors (from Switzerland - Private Donors) | 100 | | | | | 100 |
| Germany Red Cross | 167,633 | | | | | 167,633 |
| Great Britain - Private Donors | 22,503 | | | | | 22,503 |
| Greek Government | | 327,000 | | | | 327,000 |
| IATA | 8,650 | | | | | 8,650 |
| Icelandic Red Cross (from Icelandic Government) | 109,646 | | | | | 109,646 |
| ICRC (from Unidentified donor) | 153 | | | | | 153 |
| Indian Red Cross | 32,773 | | | | | 32,773 |
| India - Private Donors | 5,040 | | | | | 5,040 |
| Indonesia - Private Donors | 2,209 | | | | | 2,209 |
| Infineum UK Ltd | | 70,413 | | | | 70,413 |
| Ireland - Private Donors | 1,256 | | | | | 1,256 |
| Irish Government | 1,627,000 | | | | | 1,627,000 |
| Irish Red Cross | 346,715 | 15,094 | | | | 361,809 |
| Italian Govt Bilateral Emergency Fund | 917,700 | | | | 694,450 | 1,612,150 |
| Japanese Government | 1,785,000 | | | | | 1,785,000 |
| Japanese Red Cross | 24,278,180 | 1,355,070 | | | 429,002 | 26,062,252 |

International Federation of Red Cross and Red Crescent Societies

MDRCN003 - China - Sichuan Earthquake

Interim Financial Report

| Selected Parameters | |
|---------------------|----------------|
| Reporting Timeframe | 2008/5-2009/10 |
| Budget Timeframe | 2008/5-2010/12 |
| Appeal | MDRCN003 |
| Budget | APPEAL |

All figures are in Swiss Francs (CHF)

| | | | | |
|-------------------------------------------------------|-----------|---------|---------|-----------|
| Japan - Private Donors | 3,150 | | | 3,150 |
| Lithuanian Red Cross | 976 | | | 976 |
| Luxembourg Government | 24,150 | 80,750 | | 104,900 |
| Malaysian Red Crescent | 10,546 | | | 10,546 |
| Malaysia - Private Donors | 1,780 | | | 1,780 |
| Mauritius Red Cross | 191 | | | 191 |
| Monaco Red Cross | | | 114,914 | 114,914 |
| Netherlands - Private Donors | 8,335 | | | 8,335 |
| Netherlands Red Cross | 1,025,922 | | | 1,025,922 |
| Netherlands Red Cross (from Netherlands Government) | 12,000 | 801,500 | | 813,500 |
| New York Office (from Adams Street Partners) | 3,000 | | | 3,000 |
| New York Office (from Alcatel Lucent) | 157,661 | | | 157,661 |
| New York Office (from Applied Materials) | 15,686 | | | 15,686 |
| New York Office (from Bechtel Group Foundation) | 3,037 | 57,698 | | 60,735 |
| New York Office (from Black Rock) | 53,573 | | | 53,573 |
| New York Office (from Citadel Investment group) | 2,347 | 44,590 | | 46,937 |
| New York Office (from Codexis) | 1,763 | | | 1,763 |
| New York Office (from EMC Corp.) | 80,360 | | | 80,360 |
| New York Office (from Fibrogen) | 10,961 | | | 10,961 |
| New York Office (from Genzyme Corporation) | 11,786 | | | 11,786 |
| New York Office (from Heinz) | 105,107 | | | 105,107 |
| New York Office (from Hospira) | 105,107 | | | 105,107 |
| New York Office (from Huber) | 52,554 | | | 52,554 |
| New York Office (from Jones apparel Group) | 1,171 | | 21,804 | 22,975 |
| New York Office (from Kraft Foods) | | 157,500 | | 157,500 |
| New York Office (from Mellon Bank) | 26,787 | | | 26,787 |
| New York Office (from Monsanto Foundation) | 56,398 | | | 56,398 |
| New York Office (from Motorola Foundation) | 1,532 | 29,112 | | 30,644 |
| New York Office (from New York Life) | 125,345 | | | 125,345 |
| New York Office (from Otis LG Elevator Co) | 7,143 | | | 7,143 |
| New York Office (from Schering Plough) | 29,309 | | | 29,309 |
| New York Office (from THERMO FISCHER) | 1,071 | 20,358 | | 21,429 |
| New York Office (from United States - Private Donors) | 10,525 | | 39,085 | 49,610 |
| New York Office (from United Technologies) | 12,475 | 237,021 | | 249,496 |
| New York Office (from Yahoo) | 8,572 | | | 8,572 |
| New Zealand Red Cross | 186,719 | | 235,893 | 422,612 |
| New Zealand Red Cross (from New Zealand Government) | 664,365 | | | 664,365 |
| Nigeria private donors | 1,024 | | | 1,024 |
| Norwegian Red Cross | 87,122 | | | 87,122 |
| Norwegian Red Cross (from Norwegian Government) | 373,383 | | | 373,383 |
| Office of the Representative of the Dalai Lama | 52,671 | | | 52,671 |
| On Line donations | 97,555 | 301,864 | 360,777 | 760,197 |
| OPEC Fund For Int-l Development | 1,158,078 | | | 1,158,078 |
| Other | 14,304 | | | 14,304 |
| Qatar Red Crescent | 59,400 | | | 59,400 |
| Romanian Red Cross | 58,857 | | | 58,857 |
| Royal & Sun Alliance | 12,714 | | | 12,714 |
| Russia - Private Donors | 2,686 | | | 2,686 |
| Singapore - Private Donors | 9,975 | | | 9,975 |
| Singapore Red Cross | 114,048 | | | 114,048 |
| Slovenia Government | | | 161,500 | 161,500 |
| South Africa Government | | | 193,050 | 193,050 |

International Federation of Red Cross and Red Crescent Societies

MDRCN003 - China - Sichuan Earthquake

Interim Financial Report

| Selected Parameters | |
|---------------------|----------------|
| Reporting Timeframe | 2008/5-2009/10 |
| Budget Timeframe | 2008/5-2010/12 |
| Appeal | MDRCN003 |
| Budget | APPEAL |

All figures are in Swiss Francs (CHF)

| | | | | |
|-----------------------------------------------------------|-------------------|------------------|------------------|--------------------|
| South Africa - Private Donors | 361 | | | 361 |
| Spain - Private Donors | 1,985 | | | 1,985 |
| Sri Lanka Red Cross | 3,250 | | | 3,250 |
| Stavros Niarchos Foundation | | | 260,000 | 260,000 |
| Sweden Red Cross | 165,481 | | | 165,481 |
| Sweden Red Cross (from Swedish Government) | 342,400 | | | 342,400 |
| Swedish - Private Donors | 32 | | | 32 |
| Switzerland - Private Donors | 31,036 | | | 31,036 |
| Thailand - Private Donors | 5,200 | | | 5,200 |
| Total | 51,000 | | | 51,000 |
| Turkish Red Crescent | 5,264 | | | 5,264 |
| United Arab Emirates - Private Dono | 1,115 | | | 1,115 |
| United Arab Emirates Red Crescent | 20,981 | | | 20,981 |
| United States - Private Donors | 158,571 | | | 158,571 |
| United Technologies | 262,500 | | | 262,500 |
| United Technologies (from United States - Private Donors) | 5,250 | | | 5,250 |
| UN Staff Council / UNOG | 13,631 | | | 13,631 |
| VERF/WHO Voluntary Emergency Relief | 4,400 | | | 4,400 |
| C1. Cash contributions | 98,479,260 | 7,252,082 | 3,114,677 | 108,846,019 |

Outstanding pledges (Revalued)

| | | | | |
|------------------------------------------------|-------------------|--|--|-------------------|
| American Red Cross | 15,354,693 | | | 15,354,693 |
| British Red Cross | 2,194,711 | | | 2,194,711 |
| Canadian Red Cross | 6,315,442 | | | 6,315,442 |
| Cook Islands Red Cross | 74 | | | 74 |
| Indian Red Cross (from India - Private Donors) | 3,470 | | | 3,470 |
| New York Office (from PricewaterhouseCoopers) | 278,818 | | | 278,818 |
| C2. Outstanding pledges (Revalued) | 24,147,209 | | | 24,147,209 |

Inkind Goods & Transport

| | | | | |
|-----------------------------------------|-------------------|--|--|-------------------|
| Belgium Red Cross (Flanders) | 134,228 | | | 134,228 |
| British Red Cross | 2,589,652 | | | 2,589,652 |
| Canadian Government | 249,696 | | | 249,696 |
| Canadian Red Cross | 2,247,991 | | | 2,247,991 |
| Danish Red Cross | 1,395,009 | | | 1,395,009 |
| Finnish Red Cross | 886,681 | | | 886,681 |
| Germany Red Cross | 1,183,335 | | | 1,183,335 |
| Japanese Red Cross | 3,217,992 | | | 3,217,992 |
| Netherlands Red Cross | 3,662,744 | | | 3,662,744 |
| Norwegian Red Cross | 1,889,444 | | | 1,889,444 |
| Spanish Red Cross | 695,552 | | | 695,552 |
| C3. Inkind Goods & Transport | 18,152,323 | | | 18,152,323 |

Inkind Personnel

| | | | | |
|-----------------------------|----------------|--|---------------|----------------|
| American Red Cross | 57,493 | | 13,200 | 70,693 |
| Australian Red Cross | 57,200 | | 13,200 | 70,400 |
| Canadian Red Cross | 24,640 | | | 24,640 |
| Other | 26,107 | | | 26,107 |
| C4. Inkind Personnel | 165,440 | | 26,400 | 191,840 |

Other Income

| | | | | |
|-------------------------|----------------|--|--|----------------|
| Miscellaneous Income | 1,024 | | | 1,024 |
| Services | -92,071 | | | -92,071 |
| C5. Other Income | -91,048 | | | -91,048 |

| | | | | |
|--------------------------------------|--------------------|------------------|------------------|--------------------|
| C. Total Income = SUM(C1..C5) | 140,853,184 | 7,252,082 | 3,141,077 | 151,246,342 |
| D. Total Funding = B + C | 140,853,184 | 7,252,082 | 3,141,077 | 151,246,342 |
| Appeal Coverage | 90% | 101% | 79% | 91% |

International Federation of Red Cross and Red Crescent Societies

MDRCN003 - China - Sichuan Earthquake

Interim Financial Report

| Selected Parameters | |
|---------------------|----------------|
| Reporting Timeframe | 2008/5-2009/10 |
| Budget Timeframe | 2008/5-2010/12 |
| Appeal | MDRCN003 |
| Budget | APPEAL |

All figures are in Swiss Francs (CHF)

II. Balance of Funds

| | Goal 1: Disaster Management | Goal 2: Health and Care | Goal 3: Capacity Building | Goal 4: Principles and Values | Coordination | TOTAL |
|-----------------------------------------|-----------------------------|-------------------------|---------------------------|-------------------------------|--------------|--------------------|
| B. Opening Balance | 0 | 0 | | | 0 | 0 |
| C. Income | 140,853,184 | 7,252,082 | | | 3,141,077 | 151,246,342 |
| E. Expenditure | -77,652,753 | -125,864 | | | -324,702 | -78,103,319 |
| F. Closing Balance = (B + C + E) | 63,200,430 | 7,126,218 | | | 2,816,375 | 73,143,023 |

International Federation of Red Cross and Red Crescent Societies

MDRCN003 - China - Sichuan Earthquake

Interim Financial Report

| Selected Parameters | |
|---------------------|----------------|
| Reporting Timeframe | 2008/5-2009/10 |
| Budget Timeframe | 2008/5-2010/12 |
| Appeal | MDRCN003 |
| Budget | APPEAL |

All figures are in Swiss Francs (CHF)

III. Budget Analysis / Breakdown of Expenditure

| Account Groups | Budget | Expenditure | | | | | TOTAL | Variance |
|---------------------------------------------|--------------------|-----------------------------|-------------------------|---------------------------|-------------------------------|-------------------|--------------------|--------------------|
| | | Goal 1: Disaster Management | Goal 2: Health and Care | Goal 3: Capacity Building | Goal 4: Principles and Values | Coordination | | |
| A | | B | | | | | A - B | |
| BUDGET (C) | | 155,910,895 | 7,194,363 | | | 3,997,110 | 167,102,368 | |
| Supplies | | | | | | | | |
| Shelter - Relief | 24,610,307 | 23,527,757 | | | | 23,527,757 | 1,082,550 | 1,082,550 |
| Shelter - Transitional | | 1,082,550 | | | | 1,082,550 | -1,082,550 | -1,082,550 |
| Construction Materials | 81,841,090 | | | | | | 81,841,090 | 81,841,090 |
| Clothing & textiles | 3,171,287 | 2,809,536 | | | | 2,809,536 | 361,751 | 361,751 |
| Food | 3,500,000 | | | | | | 3,500,000 | 3,500,000 |
| Water & Sanitation | 2,121,383 | 722 | | | | 722 | 2,120,661 | 2,120,661 |
| Medical & First Aid | 845,424 | 14,894 | | | | 14,894 | 830,530 | 830,530 |
| Utensils & Tools | | 3,661 | | | | 3,661 | -3,661 | -3,661 |
| Other Supplies & Services | 9,406,822 | 2,024,838 | | | | 2,024,838 | 7,381,984 | 7,381,984 |
| ERU | | 3,429,933 | | | | 3,429,933 | -3,429,933 | -3,429,933 |
| Total Supplies | 125,496,313 | 32,893,891 | | | | 32,893,891 | 92,602,422 | 92,602,422 |
| Land, vehicles & equipment | | | | | | | | |
| Land & Buildings | 2,550,000 | | | | | | 2,550,000 | 2,550,000 |
| Vehicles | 260,750 | 128,874 | | | | 128,874 | 131,876 | 131,876 |
| Computers & Telecom | 59,585 | 51,340 | | | | 51,340 | 8,245 | 8,245 |
| Office/Household Furniture & Equipm. | 123,279 | 18,381 | | | | 18,381 | 104,898 | 104,898 |
| Others Machinery & Equipment | | 3,662 | | | | 3,662 | -3,662 | -3,662 |
| Total Land, vehicles & equipment | 2,993,614 | 202,256 | | | | 202,256 | 2,791,358 | 2,791,358 |
| Transport & Storage | | | | | | | | |
| Storage | 28,775 | 40,919 | | | | 40,919 | -12,144 | -12,144 |
| Distribution & Monitoring | 11,193,678 | 11,197,523 | | | | 11,197,523 | -3,845 | -3,845 |
| Transport & Vehicle Costs | 1,054,089 | 67,018 | 364 | | 2,556 | 69,937 | 984,152 | 984,152 |
| Total Transport & Storage | 12,276,542 | 11,305,459 | 364 | | 2,556 | 11,308,378 | 968,163 | 968,163 |
| Personnel | | | | | | | | |
| International Staff | 4,354,407 | 1,153,369 | 55,906 | | 178,480 | 1,387,755 | 2,966,652 | 2,966,652 |
| Regionally Deployed Staff | | 361 | | | | 361 | -361 | -361 |
| National Staff | 4,060,688 | 185,466 | 11,060 | | 21,296 | 217,822 | 3,842,866 | 3,842,866 |
| National Society Staff | 1,620,736 | 8,109 | | | | 8,109 | 1,612,627 | 1,612,627 |
| Consultants | 192,342 | 91,946 | | | | 91,946 | 100,396 | 100,396 |
| Total Personnel | 10,228,173 | 1,439,251 | 66,965 | | 199,776 | 1,705,993 | 8,522,181 | 8,522,181 |
| Workshops & Training | | | | | | | | |
| Workshops & Training | 2,960,857 | 102,325 | 3,655 | | 7,825 | 113,805 | 2,847,052 | 2,847,052 |
| Total Workshops & Training | 2,960,857 | 102,325 | 3,655 | | 7,825 | 113,805 | 2,847,052 | 2,847,052 |
| General Expenditure | | | | | | | | |
| Travel | 511,703 | 152,556 | 4,700 | | 12,264 | 169,519 | 342,184 | 342,184 |
| Information & Public Relation | 1,101,273 | 52,906 | 2,092 | | 18,516 | 73,514 | 1,027,759 | 1,027,759 |
| Office Costs | 298,436 | 61,616 | | | 12,608 | 74,224 | 224,212 | 224,212 |
| Communications | 190,362 | 24,209 | 207 | | 3,174 | 27,590 | 162,772 | 162,772 |
| Professional Fees | 100,032 | 103,251 | | | | 103,251 | -3,219 | -3,219 |
| Financial Charges | 5,000 | 52,276 | 14 | | 44,822 | 97,112 | -92,112 | -92,112 |
| Other General Expenses | 78,409 | 7,137 | | | 1,131 | 8,268 | 70,141 | 70,141 |
| Total General Expenditure | 2,285,216 | 453,950 | 7,013 | | 92,514 | 553,478 | 1,731,738 | 1,731,738 |
| Contributions & Transfers | | | | | | | | |
| Cash Transfers National Societies | | 25,847,513 | 39,997 | | | 25,887,511 | -25,887,511 | -25,887,511 |
| Total Contributions & Transfers | | 25,847,513 | 39,997 | | | 25,887,511 | -25,887,511 | -25,887,511 |
| Programme Support | | | | | | | | |
| Program Support | 10,861,654 | 4,906,667 | 7,869 | | 18,641 | 4,933,177 | 5,928,477 | 5,928,477 |
| Total Programme Support | 10,861,654 | 4,906,667 | 7,869 | | 18,641 | 4,933,177 | 5,928,477 | 5,928,477 |
| Services | | | | | | | | |
| Services & Recoveries | | 500,691 | | | | 500,691 | -500,691 | -500,691 |

International Federation of Red Cross and Red Crescent Societies

MDRCN003 - China - Sichuan Earthquake

Interim Financial Report

| Selected Parameters | |
|---------------------|----------------|
| Reporting Timeframe | 2008/5-2009/10 |
| Budget Timeframe | 2008/5-2010/12 |
| Appeal | MDRCN003 |
| Budget | APPEAL |

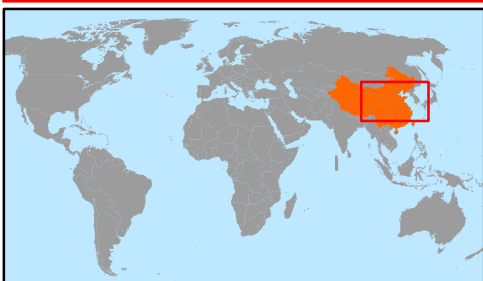
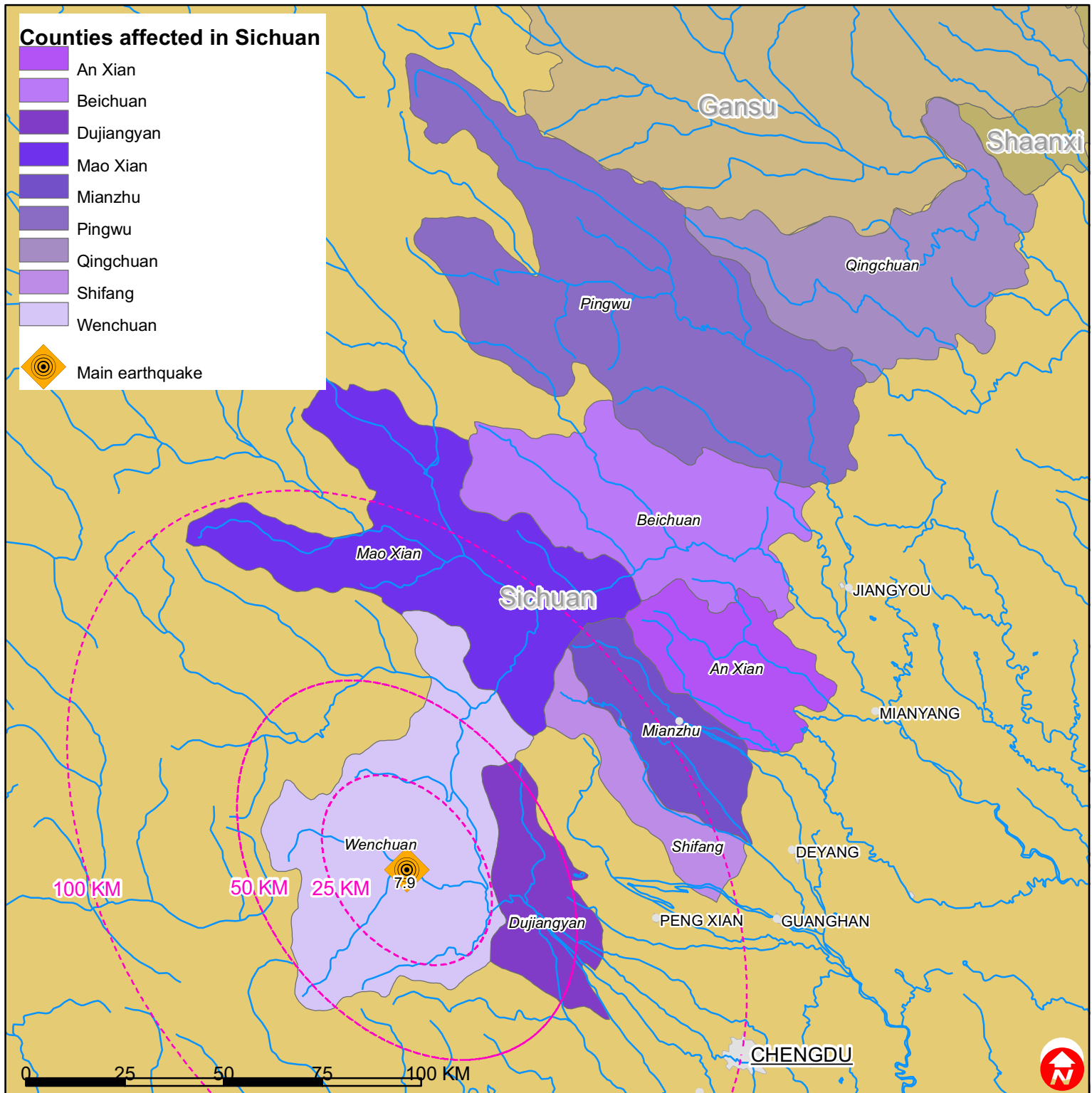
All figures are in Swiss Francs (CHF)

III. Budget Analysis / Breakdown of Expenditure

| Account Groups | Budget | Expenditure | | | | | TOTAL | Variance |
|-------------------------------------|--------------------|-----------------------------|-------------------------|---------------------------|-------------------------------|------------------|--------------------|-------------------|
| | | Goal 1: Disaster Management | Goal 2: Health and Care | Goal 3: Capacity Building | Goal 4: Principles and Values | Coordination | | |
| A | | | | | | | B | A - B |
| BUDGET (C) | | 155,910,895 | 7,194,363 | | | 3,997,110 | 167,102,368 | |
| Shared Services | | 750 | | | | | 750 | -750 |
| Total Services | | 501,441 | | | | | 501,441 | -501,441 |
| Operational Provisions | | | | | | | | |
| Operational Provisions | | | | | | 3,390 | 3,390 | -3,390 |
| Total Operational Provisions | | | | | | 3,390 | 3,390 | -3,390 |
| TOTAL EXPENDITURE (D) | 167,102,368 | 77,652,753 | 125,864 | | | 324,702 | 78,103,319 | 88,999,049 |
| VARIANCE (C - D) | | 78,258,142 | 7,068,499 | | | 3,672,408 | 88,999,049 | |



China: Earthquake



The maps used do not imply the expression of any opinion on the part of the International Federation of the Red Cross and Red Crescent Societies or National Societies concerning the legal status of a territory or of its authorities.

Map data sources: ESRI, DEVINFO, GIST, CIESIN, International Federation - MDRCN003EAREV.mxd