

Operations update



International Federation
of Red Cross and Red Crescent Societies

China: Sichuan Earthquake

Emergency appeal n° MDRCN003
GLIDE n° EQ-2008-00062-CHN
Operations update n° 27
12 May 2010

Two-Year Consolidated Report

Period covered by this update: 12 May 2008 – 30 April 2010

Appeal target (current): CHF 167,102,368 (USD 150.6 million million or EUR 118.49 million)

Appeal coverage: With contributions received to date, in cash and kind, the appeal is currently approximately 93 per cent covered. <click [here](#) for interim financial report or [here](#) for contact details>



Like thousands of other households in Jiulong, Xie Weiwei and his family are happy recipients of an additional CNY 10,000 (CHF 1,500) in construction support from IFRC. They had borrowed CNY 30,000 to construct their house and have used Federation funds to repay their debt. They were living in a makeshift shelter until moving into their new home in November 2009. Melisa Tan/IFRC

Appeal history:

- A revised emergency appeal was launched on 20 November 2008 for CHF 167.1 million (USD 137.7 million or EUR 110 million) to assist 200,000 families (up to 1,000,000 people) for 31 months.
- An emergency appeal was launched on 30 May 2008 for CHF 96.7 million (USD 92.7 million or EUR 59.5 million) in response to the huge humanitarian needs and in recognition of the unique position of the Red Cross Society of China (RCSC) supported by Red Cross Red Crescent partners to deliver high quality disaster response and recovery programmes.
- A preliminary emergency appeal of CHF 20.1 million (USD 19.3 million and EUR 12.4 million) was issued on 15 May 2008 to support the RCSC to assist around 100,000 people affected by the earthquake for 12 months.

- CHF 250,000 (USD 240,223 or EUR 155,160) was allocated from the International Federation of Red Cross and Red Crescent Societies' (IFRC) Disaster Relief Emergency Fund (DREF) on 12 May 2008, to support the RCSC to immediately start assessments of the affected areas and distribute relief items.

Summary:

Two years after the massive earthquake struck the Sichuan province, the Red Cross Society of China (RCSC) and the International Federation of Red Cross and Red Crescent Societies (IFRC), continue to provide significant humanitarian assistance to those affected by the earthquake. The country's response to the earthquake was extraordinary in light of the sheer scope of the disaster. Main achievements in the last two years include the following:

- Donations received by the RCSC alone reached approximately CNY 19.1 billion¹ (CHF 3.13 billion)
- IFRC and bilateral partners' funds raised amount to CNY 1.5 billion (CHF 250 million), bringing total Movement-wide funds to CNY 20.6 billion (CHF 3.38 billion)
- Over 1 million beneficiaries were reached with emergency relief items including shelter, water, quilts, food parcels and other relief items during the emergency phase
- 35,000 RCSC staff and volunteers were mobilized
- More than 62,000 families (approximately 310,000 beneficiaries) received funds totalling CNY 363.6 million (CHF 58.9 million) under the shelter programme
- Completed reconstruction supported by RCSC, IFRC and partner national societies include 81,882 houses, 329 schools, 258 township clinics and 1,149 village clinics

IFRC continues to provide support in livelihoods, health and care including psychosocial support, water, sanitation and hygiene promotion, disaster management and overall organizational development.

Many partner national societies have made contributions to the appeal: American Red Cross/American government, Australian Red Cross/Australian government, Belgian Red Cross/Belgian government, British Red Cross, Bulgarian Red Cross, Canadian Red Cross/Canadian government, Cook Islands Red Cross, Croatian Red Cross, Czech Red Cross, Danish Red Cross/Danish government, Estonian Red Cross, Finnish Red Cross/Finnish government, German Red Cross, Icelandic Red Cross/ Icelandic government, Indian Red Cross, Iranian Red Crescent, Irish Red Cross/ Irish government, Italian Red Cross, Japanese Red Cross/Japanese government, Lithuanian Red Cross, Malaysian Red Crescent, Mauritius Red Cross, Monaco Red Cross, Netherlands Red Cross/Netherlands government, New Zealand Red Cross/New Zealand government, Norwegian Red Cross/Norwegian government, Qatar Red Crescent, Romanian Red Cross, Singapore Red Cross, Spanish Red Cross, Swedish Red Cross/ Swedish government, Sri Lanka Red Cross, Turkish Red Crescent and United Arab Emirates Red Crescent Society, as well as contributions from American, Greek, Italian, Luxembourg, Slovenian and South Africa governments, OPEC Fund for International Development, the Stavros Niarchos Foundation and many corporate partners.

The Red Cross Society of China has also received many bilateral contributions of funding, including the following: Canadian Red Cross, Cambodian Red Cross, French Red Cross, German Red Cross, Japanese Red Cross, Republic of Korea Red Cross, Norwegian Red Cross, Pakistan Red Crescent, Singapore Red Cross, Spanish Red Cross, Swiss Red Cross, Thai Red Cross, Turkish Red Crescent and Viet Nam Red Cross. These contributions have been added to the various substantial resources raised domestically by the Red Cross Society of China in its national fundraising appeal.

The appeal totalling 167.1 million is 93 per cent covered, with cash and in-kind contributions totalling CHF 154.7 million received. Total expenditure from May 2008 until the end of March 2010 is CHF 116.17 million².

The IFRC, on behalf of the Red Cross Society of China, would like to thank all partners for their very generous response to this appeal.

<click [here](#) to view the interim financial report>;
 <click [here](#) to view a map of the affected areas>
 <click [here](#) to view contact details>

¹ Includes RCSC headquarters, RCSC provincial branches, Hong Kong and Macao Red Cross branches and Taiwan Red Cross Organization.

² Please note that the interim financial report attached reflects income and expenditure up to 31 March 2010 only. For the latest information on contributions, click [here](#) for the latest donors' response list.

The situation

Two years have passed since the earthquake hit Wenchuan and the surrounding areas of Sichuan, Gansu and Shaanxi provinces in western China on 12 May 2008, leaving an official death toll of over 87,449³. The devastating earthquake injured 375,000 people and caused the initial displacement of up to 15 million people. A huge portion of infrastructure and some five million houses were destroyed in its aftermath, resulting in the homeless and displaced being moved into tents and other temporary shelters.

The region continues to experience aftershocks till this day, with an earthquake measuring 5.0 on the Richter scale hitting Sichuan on 31 January 2010. It caused one death, injured 13 and damaged dozens of homes. Recently, a major earthquake measuring 7.1 magnitude⁴ struck neighbouring Qinghai province on 14 April causing 2,200 deaths, levelling more than 15,000 houses and injuring over 12,000.

Due to the huge need for shelter, the country turned its attention to recovery efforts in the rebuilding of entire communities, forging forward especially in housing and infrastructure reconstruction. The immense devastation on five million homes made permanent housing reconstruction the most important priority. The government's initial three-year reconstruction target was brought forward a year, spurring on the speed of housing reconstruction in all earthquake affected provinces. All efforts throughout 2009, were directed at rebuilding houses, schools, hospitals, roads and highways and other public infrastructure in the earthquake-affected areas.

Today, according to the Sichuan provincial government, almost all housing reconstruction in Mianzhu county (target area of the IFRC's shelter support project) has completed. This is in line with the government of China's completion deadlines for domestic- and internationally-funded housing reconstruction projects of 30 September 2009 and 12 May 2010 respectively.

Red Cross and Red Crescent action

Overview

The country's response to the earthquake was extraordinary in light of the sheer scope of the earthquake. During the emergency relief phase, donations received by September 2008 totalled CNY 79.7 billion⁵. The scale of the Red Cross Red Crescent operation, taking into account funding from the RCSC and IFRC and its partners, surpassed the 2004 tsunami operation of CHF 3.01 billion. Donations received by the RCSC alone reached approximately CNY 19.1 billion⁶ (CHF 3.13 billion). IFRC and bilateral partners funds amount to CNY 1.5 billion (CHF 250 million), bringing total Movement-wide funds to CNY 20.6 billion (CHF 3.38 billion).

Relief

In the immediate aftermath of the disaster and in support of the RCSC, the IFRC coordinated and mobilized over 100,000 tents to Sichuan. This was one of the largest logistics exercises and air lift operations, with over 45 charter flights, ever carried out by IFRC. The Federation provided additional support through the deployment of two water and sanitation modules (Austrian and Spanish Red Cross Societies) and one mass sanitation module (British Red Cross) of emergency response units (ERUs) to provide safe drinking water, excreta disposal facilities and hygiene promotion to some of the most devastated townships. A German Red Cross field hospital was set up and provided medical care to the injured for three months.

In addition to IFRC-supported tents, RCSC headquarters also distributed thousands of tents, 120,000 quilts, 350,000 items of clothing, 1.7 million mosquito nets and nearly 7,000 tonnes of food. The National Society deployed six medical teams (excluding the coordination of international medical teams from Italy, Japan and Russia) two psychosocial support and first aid teams and provided treatment to 23,000 people and performed 180 surgeries. RCSC provincial branches dispatched 107 groups of emergency rescue teams and 37 psychosocial support teams to provide assistance to 230,000 people.

The scale of the public response channeled through the RCSC has given it unprecedented visibility. The National Society proactively committed itself to greater accountability and transparency. Being ever more in the public eye has also helped to mobilize new volunteers and retain them. Community-based programmes implemented by IFRC will also promote volunteerism at grassroots level. RCSC's capacity to respond to

³ No official statement by the government has been issued on the status of the 18,500 missing people. However, some media reports quote a death toll of more than 80,000 people. According to Xinhua news, 86,663 deaths alone were from Sichuan province.

⁴ As of 26 April 2010, there are no reports on final count of casualties and people missing. More information on this earthquake and RCSC response can be found on: <http://www.ifrc.org/where/country/cn6.asp?countryid=47>

⁵ South China Morning Post

⁶ Includes RCSC headquarters, RCSC provincial branches, Hong Kong and Macao Red Cross branches and Taiwan Red Cross Organization.

domestic disasters continues to be strengthened, including plans for new disaster preparedness warehouses, national disaster response teams and new forms of training in health and water and sanitation in emergencies.

During the recent Qinghai earthquake in April 2010, RCSC was able to immediately dispatch two water and sanitation emergency response teams (ERTs - formerly water and sanitation ERUs deployed to the Sichuan earthquake operation and handed over to RCSC by the Austrian Red Cross and British Red Cross) to the quake-hit zone. Under the disaster management programme, these ERTs had undergone preliminary trainings in 2009 as part of the ERT development process. The ERTs had the opportunity to capitalize on their experience with partner national societies during the Sichuan earthquake and in recent trainings, as well as to identify gaps to be filled in future trainings and the overall ERT development process which is supported by the IFRC under the disaster management programme.

By May 2009, all IFRC-supported relief work was completed. For objectives, expected results, activities and a full report on achievements, impact and challenges related to the relief phase, please click [here](#) for the **1-Year Consolidated Report**.

Recovery

With emergency relief completed, the past 1.5 years focused solely on reconstruction and recovery projects. Reconstruction projects currently implemented by the RCSC total CNY 12.4 billion⁷ (CHF 2.01 billion) across Sichuan, Gansu, Shaanxi, Chongqing, Ningxia and Yunnan. This excludes reconstruction projects by the Hong Kong and Macao branches of RCSC and Taiwan Red Cross Organization (total CNY 1.04 billion or CHF 168.7 million), and IFRC. Bilateral reconstruction projects amount to CNY 206.8 million⁸ (CHF 33.55 million).

Approximately five million houses were destroyed due to the sheer scale of destruction in the earthquake affected area, and building homes was the major priority of the government. In its transition from relief to recovery, IFRC supported RCSC to meet the huge needs of housing reconstruction.

The National Society and its international partners are supporting the construction of houses, schools, township clinics, village clinics, community activity centres, rehabilitation centres, rural water facilities, homes for the disabled and elderly, and disaster preparedness centres across Sichuan, Gansu, Shaanxi, Chongqing, Ningxia and Yunnan. By the end of January 2010, the progress of the four major reconstruction areas (RCSC headquarters-funded or through headquarters) are as below⁹:

| Type of building | Total number | Completed (%) | On-going (%) | To be started (%) |
|------------------|--------------|---------------|--------------|-------------------|
| House | 125,413 | 65.29% | 27.29% | 7.42% |
| School | 778 | 42.29% | 40.06% | 17.65% |
| Township clinic | 968 | 26.73% | 47.74% | 25.53 |
| Village clinic | 2,823 | 40.72% | 22.21% | 37.07% |

While housing reconstruction support is funded multilaterally, due to the huge needs and gap in funding housing reconstruction, the RCSC agreed that support for non-housing reconstruction projects be funded bilaterally, unless otherwise agreed upon. Currently, a number of partners are funding individual projects bilaterally, including¹⁰:

| National Society | Projects | | |
|--------------------|---|---|------------------------------------|
| | Sichuan | Gansu | Shaanxi |
| American Red Cross | - 7 village water system - Local RC capacity building - Hygiene promotion | | |
| Canadian Red Cross | | - 13 township clinics and 1 leprosarium - Local RC capacity building | - 2 schools - 1 township clinic |

⁷ Source: RCSC headquarters

⁸ Source: RCSC headquarters

⁹ Statistics source: RCSC headquarters

¹⁰ Statistics source: RCSC headquarters

| | | | |
|--|--|--|--|
| German Red Cross | - 3 clinics | | |
| Japanese Red Cross | - 54 village clinics - 4 township clinics - 8 schools - Local Red Cross capacity building | - 21 township clinics - 9 schools - Local Red Cross capacity building | - 14 township clinics - 9 schools - Local Red Cross capacity building |
| Korean Red Cross | - 2 schools - Teaching equipments - Scholarship | | |
| Malaysia Red Crescent | - 10 village clinics - Medical equipments | | |
| Qatar Red Cross | - 384 households | | |
| Thailand Red Cross | - 1 township clinic - 1 school (dormitory, dining hall) | | |
| Hong Kong, Macao Red Cross branches and Taiwan Red Cross Organization | | | |
| Hong Kong Red Cross branch | - 11,559 households - 5 county hospitals - 25 township clinics - 20 schools - 265 village clinics - 1 senior home - 1 prosthetics center | - 3655 households - 8 schools - 5 township clinics - 74 village clinics | - 2840 households - 7 schools - 3 township clinics - 40 village clinics |
| Macao Red Cross branch | - 1,467 households - 6 schools - 5 township clinics - 26 village clinics - 7 senior homes | - 2 schools - 4 township clinics | - 109 households - 3 schools - 1 township clinic - 2 village clinic |
| Taiwan Red Cross Organization | - 11 schools - 9 township clinics - 1 rehabilitation centre | - 21 schools - 19 township clinics | - 11 schools - 14 township clinics - 200 village clinics |

IFRC, in support of RCSC reconstruction efforts, provided cash grants to over 62,000 households in Sichuan. It is also implementing a recovery programme encompassing health and PSP, water and sanitation, and livelihoods that are cross cutting with disaster risk reduction in all three provinces as well. In addition to shelter construction support, community-based programmes including health and psychosocial care, water and sanitation, livelihoods and disaster preparedness have been carried out to the same communities where family homes are being reconstructed.

On 8 November, 2009, IFRC, American Red Cross, German Red Cross and Japanese Red Cross were honoured with the China Red Cross Special Medal in a ceremony held at the Great Hall of the People. This significantly honoured the contribution of the Red Cross Red Crescent Movement and individuals that have committed to relief and recovery work in China and the great support provided to the Sichuan earthquake affected areas.

Although the shelter support programme has come to an end, the frequent changes at ground level to the shelter support plan and delays experienced last year has had an impact on community-based programmes. Today, implementation of programmes such as livelihoods is accelerating, while planning for water, sanitation and hygiene promotion as well as health and psychosocial support are in its final stages of completion. The possibility of new projects arising out of the remaining shelter support funds is also being considered, with RCSC taking the lead in assessing potential reconstruction projects that meet continued needs in the earthquake areas.

The substantial change in the scope of the shelter programme due to the various revisions to the implementation plan throughout 2009 has resulted in significant changes to some of the objectives and activities listed below. The Federation has been in regular discussions with all major donors about the critical issues and all stakeholders agreed to the various changes.

A revised appeal was to be issued in March. However, several critical issues heavily linked to the remaining balance from the shelter-support programme (CNY 46.6 million) have yet to be finalized. The RCSC

headquarters is in the midst of assessing several options, and proposals are in the process of being discussed between the RCSC and IFRC. A revised appeal incorporating the agreed revised plans is expected to be issued by the end of May. With the revision of the appeal, some of the objectives and expected results below will be changed.

| | |
|--|---|
| Shelter reconstruction | |
| Objective 1: (Recovery Phase: 7 to 31 months): To 22,540 ¹¹ households of the most vulnerable earthquake-affected families in Jiulong, Zundao, Banqiao and possibly Xinglong townships of Mianzhu County to reconstruct their homes using the “owner-driven” reconstruction model. | |
| Expected results | <ul style="list-style-type: none"> • Homeowners and local authorities have access to technical support to build earthquake-resistant homes. • Supplementary monitoring and quality control that reinforces and complements the government of China's monitoring and quality control to support homeowners and contractors to build earthquake resistant homes. • Homeowners receive necessary financial support to build earthquake-resistant homes. • Homeowners have the necessary information and knowledge to build earthquake-resistant homes. |

Progress: The IFRC distributed cash grants to families in Mianzhu county on 25-29 December 2009 and 27 January 2010, where the second and final phase of the distribution covered 1,317 families who meet the criteria but were not included in the first distribution. At the end of all distributions, **62,319** households in total received shelter assistance through IFRC. Of the 124,358 rural homeowners reconstructing their homes across Mianzhu county, the IFRC shelter support programme covers **50 per cent** rural reconstructed homes throughout all of Mianzhu county who fulfill the requirements for Red Cross financial assistance.

In the last operations update, it was reported that CNY 361 million (CHF 58.56 million) was distributed to 61,732 selected households throughout 20 townships during the first phase of distribution. This was the number of households planned by the Federation to receive funds in the first distribution but in the course of this first distribution, 2,477 households had clerical errors that prevented the funds from going through. Most of these errors were remedied by the bank within days, and funds to 730 households were included in the second phase of distribution when the errors were eventually fixed. Therefore, 61,002 households actually received funds in the first distribution and 1,317 households in the second distribution, with a total of CNY 363.6 million (CHF 58.9 million) distributed.

IFRC's shelter support programme's coverage extended to rural houses damaged by the earthquake and required reconstruction in all 21 townships within Mianzhu county. However, due to the government's decision to re-classify the status of one township from 'rural' to 'urban', this particular township no longer fulfilled the conditions for shelter support. Therefore, IFRC funds were distributed to the remaining 20 rural townships within Mianzhu county. Financial support is being paid directly into beneficiaries' bank accounts.

The maximum amount of support which households received is CNY 10,000, the equivalent of about six years'¹² worth of pre-earthquake disposable income for the average farmer per capita. Those being supported by this financial assistance include the elderly, families who lost loved ones in the earthquake, families with people suffering from certain serious illnesses, the disabled and families that are to be permanently relocated.

Funds from IFRC helped families to pay down debt and enabled them to purchase essential final elements in the construction of their new homes or basic furniture and household items.

Out of CNY 410 million (CHF 66.51 million) allocated to shelter reconstruction as per the implementation plan, CNY 363.6 million (CHF 59 million) has so far been spent on cash grant distributions. Currently, the remaining funds from the shelter support programme stands at approximately CNY 46.3 million (CHF 7.51 million). Proposals on how to use these remaining funds will be negotiated with RCSC and local partners, and may be re-allocated pending agreement from donors and IFRC. At the partnership meeting in Xiamen in March 2010, RCSC had mentioned several possibilities such as reconstructing schools, township health clinics or village clinics in areas where needs remain unmet. RCSC will be conducting assessments soon in order to provide final proposals. It was also indicated these projects might be implemented in areas outside Mianzhu county.

¹¹ Previous reports and the draft shelter programme still address 17,540 households in three townships. As requested by the government of China, the International Federation has included a fourth township with another 5,000 households under this programme with the understanding that sufficient funding is available.

¹² The government of Deyang prefecture 's website: http://www.dyty.gov.cn/News_View.asp?NewsID=18648

Figure 1: Final breakdown of IFRC shelter support cash grants.

| No. | Name of Township (TS) | Total No. of Households | Total CNY |
|--------------|---|-------------------------|--------------------|
| 1 | 3 Original TS: (Jiulong, Zundao, Banqiao) | 17,583 | 175,830,000 |
| 2 | 3 Mountain TS (Jinhua, Qingping, Tianchi) | 5,118 | 51,180,000 |
| 3 | 14 TS | 39,618 | 136,613,000 |
| Total | | 62,319 | 363,623,000 |

Technical support

As detailed in [Operations Update no. 26](#), the original plan to develop technical trainings for beneficiaries on earthquake-resistant housing included topics such as contract review, design parameters, selection of contractors, construction techniques and how to oversee contractors. Unfortunately, the original assumptions did not account for changes such as the rate of housing progressing more rapidly than anticipated, the programme scale expanding extensively and access to the field being restricted at times.

By the time the addendum of the memorandum of understanding was signed in May, a majority of beneficiaries had already begun constructing their homes. The shelter team focused first on the technical information, education and communications materials and it was later agreed that the impact of the training programme would be too limited. Limitations faced by IFRC in providing technical trainings were referenced in the letter issued on 7 August to donors.

Nevertheless, high-quality graphic technical posters and handouts on techniques of earthquake-resistant construction were developed, printed and distributed to households prior to the cash distribution. Their impact on the reconstruction effort is expected to be very limited as most houses have already completed reconstruction.

Monitoring

Upon the completion of cash distributions, RCSC teams began conducting monitoring visits on 15 March to verify if households had fulfilled the selected criteria and received the accurate amount of IFRC assistance. To date, 2.37 per cent of households were monitored by six teams consisting of Mianzhu and Deyang branches of RCSC and IFRC staff and volunteers. These teams interviewed about 1,500 beneficiaries from 20 townships at the end of monitoring in early April. These beneficiaries are selected randomly by IFRC.



A beneficiary being interviewed by RCSC monitoring teams in Mianzhu county. Melisa Tan/ IFRC.

Joining Red Cross teams are the administrative and natural village leaders and one or two representatives from the township government. During interviews, a questionnaire is filled out and cross-checked with the head of the household's ID card, resident book, bank book, and in the 14 townships, documents that prove they fulfilled one of the five criteria. All documents and the house owner standing in front of his/her house are photographed for documentation purposes.

Review

International humanitarian organizations have never before been allowed to carry out operations of this magnitude in China, and this brings along new opportunities and challenges. This is a first for RCSC and the Federation in working together on such a scale. In its commitment to learn from this unique experience, the RCSC and IFRC are planning an external review of the shelter support programme.

The purpose of this review is to examine the extent to which the goal, objectives and expected results of the Sichuan earthquake emergency and recovery operation were achieved in terms of its relevance to the needs of the beneficiaries and its effectiveness and timeliness. In so doing, the review will highlight what worked well and what might have been done differently as lessons to be applied in future operations. Where

relevant, the review will document good practices and areas of improvement for future programming. In addition, the review will analyse how disaster and disaster-related policies are used as guidance for the planning and implementation of emergency and recovery operations led by RCSC and supported by IFRC and to provide recommendations for improvement, where appropriate.

The review will take place in May 2010 and will cover the entire duration of the operation until 1 April 2010, including relief and recovery activities. The terms of reference was sent out to all partners and review team members have been recruited. The review takes place from 10 May to 10 June. Several partner national societies have expressed their interest in joining the review teams to maintain monitoring and evaluation efforts within the Movement.

Impact: All beneficiaries interviewed were happy and grateful for the financial support, which the IFRC and the RCSC transferred directly into each beneficiary family's bank account. In addition to making a substantial difference in easing the burden of debt, where payments each month serve as a reminder of the tragedy they faced, these funds enabled many families to purchase essential final elements in the construction of their new homes or basic furniture and household items.

In some of these townships, awareness of the Red Cross Red Crescent Movement continues to increase. In townships like Qingping, beneficiaries now have the opportunity to take vocational training and business skills courses to restart and/or improve their income earning capacities through IFRC's livelihoods programme. In Hanwang township, some beneficiaries will also have the chance to access safe drinking water under IFRC's water and sanitation project.

Challenges: RCSC and IFRC have faced tremendous challenges throughout 2009. While many of the changes that caused implementation plans to be revised more than once (in May, September, November and December) are related to the practicalities of implementing a project that is feasible in the eyes of all concerned according to field realities, the main factor impeding the entire programme is local government concerns on potential social instability.

Significant limiting factors were placed on construction monitoring and technical assistance from what was originally planned by IFRC and RCSC. By the time all funds were distributed, over 95 per cent of the houses were already completed. Therefore, there is a substantial reduction in the level of technical construction monitoring that is possible and relevant. As tools such as concrete hammers and rebar testers were prohibited during the inspections, IFRC is not able to accurately ascertain the quality of these newly-built homes and whether they meet government construction guidelines. Nevertheless, the government has at the onset been responsible for maintaining the quality of construction following the earthquake and has been monitoring the building standards in place. An assessment that was conducted by a senior shelter delegate from the Asia Pacific zone office found the government system for monitoring construction and the housing construction quality in general to be satisfactory.

Construction monitoring was to be limited to visual inspection of a small percentage (1-3 percent) of completed homes only after the distribution of funds and to be carried out simultaneously with cash grants monitoring. However, due to the potential for social unrest in the 14 townships (not fully covered by IFRC assistance), local authorities requested for monitoring teams in these 14 townships to comprise national staff and volunteers. As such, IFRC's technical construction delegate was unable to participate in these visual inspections.

Cash grant monitoring was originally expected to begin after all cash was distributed by 27 January. However, as Chinese New Year was approaching, it was postponed till after the festival. This was further delayed by another week due to the National People's Congress and the Chinese People's Political Consultative Conference. Monitoring was completed in April 2010.



During the shelter monitoring visits, many families had expressed their appreciation of Red Cross funds. In Jinhua township, a beneficiary and his wife face extreme hardships. Based on his personal account, the beneficiary suffered a stroke after the earthquake and is semi-paralyzed. They have a 14 year old son who is not able to attend school due to the lack of funds for school fees. RCSC/IFRC grants have helped them to repay some of their debt incurred during the course of reconstructing their home and also to assist in paying some medical bills. IFRC

With the shelter programme now completed, IFRC is able to go ahead with the implementation of other programmes.

| |
|---|
| I. Health and care |
| Objective 1 (Recovery Phase: 7 to 31 months): To reduce the vulnerability of the earthquake-affected population to public health risks through a community-based health (CBH) approach. |
| Expected results <ul style="list-style-type: none"> • There is significantly increased knowledge how to prevent and manage public health risks among earthquake affected communities. • The knowledge and capacity of RCSC board members, staff and volunteers to coordinate, manage and implement programmes is significantly strengthened. |
| II. Psychosocial support |
| Objective 1 (Recovery Phase: 7 to 31 months): Improve the psychological resilience of the earthquake affected population. |
| Expected Result <ul style="list-style-type: none"> • Earthquake-affected people are able to manage stress and overcome crisis in their communities, individually, and among their families. |

IFRC's health and care programme aims to address the physical and psychosocial needs of beneficiaries in a sustainable manner. It incorporates preventive and rehabilitative health and care and PSP activities through the use of an integrated community-based approach. It aims to develop local capacity to respond to health situations during emergencies and non-emergencies in three areas; community-based health and first aid (CBHFA), psychosocial support (PSP), and health in emergencies (HiE).

The programme also promotes capacity building of the National Society through the provision of technical and coordination support to assist RCSC in systematically developing and implementing these programmes. This will help ensure sustainability and integration of IFRC tools and systems into RCSC's institutional programmes as CBHFA and PSP are new concepts to the RCSC.

CBHFA primarily involves the training of RCSC master trainers in health-related knowledge, such as first aid and health issues commonly affecting local communities. These trainers go on to train volunteers at community level, who in turn provide training to local communities according to the needs and priorities of the communities themselves. CBHFA incorporates globally recognized tools and materials that are translated and localized according to the local context.

A crucial component of the Red Cross Red Crescent health response has been psychosocial support. The shock and trauma experienced by communities was severe and helping people overcome the psychological impact of the loss of loved ones is often as important as the provision of tangible relief items. The high number of deaths and injured left in the wake of the earthquake continue to leave a physical and emotional toll on those affected. Huge losses incurred and the stress of rebuilding homes and anxieties about the future, among others, have led to more attention being given to the importance of psychological health. Psychological rehabilitation has become a major issue during the reconstruction project and more attention is being paid to the psychological health of people in quake-hit areas.

To address the needs and recovery coming out of this, IFRC's psychosocial programme aims to build four psychosocial emergency response teams (40 members) within Yunnan and Sichuan branches of the RCSC. These teams, through trainings in accordance with Sphere standards, inter-agency guidelines on mental health and psychosocial support in humanitarian emergencies, national standards and other relevant guidelines, will be equipped to address psychosocial needs in Sichuan (teachers and students) and Yunnan (ethnic minority groups and the elderly) while also augmenting national emergency rescue/response teams in times of disasters.

CBHFA

Progress: The CBHFA programme was originally to be implemented in earthquake affected areas in Sichuan, Shaanxi and Gansu but is now being expanded to Yunnan province as well.

A training of master trainers for 30 RCSC staff was held in July 2009 prior to the delays associated with the shelter programme. With the signing of project agreement in March, the programme is picking up speed again, with recently conducted assessments and a planning meeting between IFRC, Sichuan, Shaanxi,

Gansu, Yunnan branches and RCSC headquarters taking place on 22-23 April to finalize a detailed plan of action.

In July, according to the timetable made in the planning meeting, these master trainers will begin training 125-150 volunteers at community level, who, in turn, will provide training to the local communities according to the needs and priorities of the communities themselves. In addition to disseminating key messages, volunteers will also introduce the work of the Red Cross Red Crescent Movement and its Fundamental Principles. More importantly, training at grassroots level will empower communities themselves to take ownership of issues affecting them, and consequently, assist decision making at the Red Cross branch level.



RCSC staff from various provincial branches took part in a week-long CBHFA master trainer workshop in July, 2009 which was facilitated by the Federation's health team. Selina Zhang/IFRC.

Translated and localized copies of CBHFA materials were reviewed by RCSC branches during the master trainers workshop and have been printed and will be ready for use by the time training begins.

In September 2009, in conjunction with World First Aid Day, IFRC, RCSC headquarters and the Sichuan branch of the RCSC conducted joint activities in five prefectures. The CBHFA programme was also officially launched in an event in Mianzhu county which was covered by the local media. Around 240 students and teachers attended a session demonstrating CPR and first aid methods. First aid kits, safety books for students and mini-mannequins and other first aid teaching tools were donated to the school and local Red Cross branches. The Sichuan branch of the RCSC, with support from IFRC, reached out to some 10 million people affected by the earthquake through first aid and public awareness programmes. Also launched were activities to last three months such as first aid trainings, disaster simulation exercises and sharing first aid knowledge with the general public.

Psychosocial support (PSP)

Progress: The Federation supports RCSC in building a PSP emergency response team (ERT) to provide psychosocial training to 100 teachers and 17,000 students in Mianzhu county. Additionally, schools will be equipped with first aid kits and first aid training to enable teachers and students to respond immediately in the event of an emergency. The PSP project in Sichuan will support the Sichuan branch in building one PSP ERT to provide trainings and conduct activities in ten schools in five prefectures in Sichuan. The agreement will be signed in May 2010.



School children taking part in PSP activities that are included in the toolkit. IFRC

IFRC and RCSC have been busy providing support to schools and communities to overcome trauma through the promotion and better understanding on IFRC's psychosocial support programme and the differences between psychosocial support methods and clinical psychology.

IFRC and RCSC conducted a two-day PSP training in November 2008 which was participated by 12 teachers from ten primary and middle schools in Deyang, Shifang and Mianzhu. The training also stressed the importance of ensuring children with permanent injuries recover not only physically but psychologically as well. Teachers were trained on activities conducive to the children's growth and motivational levels, while also encouraged to use stories and



cartoons which often lead to children opening up and expressing their inner feelings. Techniques to observe and detect the long-term effects on children were demonstrated.

IFRC support of RCSC's *Sunshine in Your Heart* (SiYH) programme continues through the provision of additional components to supplement SiYH's existing PSP programmes in schools. The health team has developed a PSP toolkit for use in the classrooms. Additional materials from the Psychosocial Reference Centre in Copenhagen and Inter-Agency Standing Committee (IASC) Guidelines have also been translated and adapted.

Several trials to test out modules from the PSP toolkit and its effectiveness for use by teachers and students were conducted in January, April and September 2009. School children told stories through Qiu Qiu the panda and used art therapy to express their feelings. In conjunction with World First Aid Day, in Meigu county, Liangshan Yi Autonomous Prefecture, the Sichuan branch of the RCSC and IFRC conducted various PSP activities in four schools, including training 35 teachers in psychological first aid (PFA) training. In three other schools, Federation staff and RCSC volunteers ran activities for some 150 primary school children.

On 4-6 December 2009, training was conducted for 30 Yunnan branch of the RCSC mental health volunteers. These volunteers have been providing mental health support in the branch's existing psychological programmes and were identified as potential ERT members.

In February 2010, a review of the PSP toolkit was conducted. The toolkits will be finalized in May in time for the implementation of PSP in schools and communities. In March, a planning meeting between IFRC and RCSC headquarters, Sichuan and Yunnan branches took place. A detailed plan of action was finalised and efforts to move forward with implementation is underway.

Health in emergencies (HiE)

Progress: To capitalize on RCSC staff previously trained on HiE prior to the earthquake, RCSC is in the midst of submitting a proposal for a HiE ERTs. Further information will be shared once these proposals are available.

| |
|--|
| Water and sanitation, and hygiene promotion |
| Objective 1 (Recovery Phase: 7 to 31 months): To reduce vulnerability of earthquake-affected populations from water-borne diseases by improving access to safe water and sanitation facilities and empowering community based organizations on water governance. |
| <p>Expected results</p> <ul style="list-style-type: none"> • Communities have improved access to water and sanitation facilities according to minimum Sphere standards in three townships of Mianzhu County. • Communities and RCSC have skills and knowledge to identify problems and solutions involving water, sanitation and hygiene practice issues through participatory hygiene and sanitation transformation (PHAST). |

Progress: The IFRC's water programme consists of one gravity-fed system to serve eight villages (11,000 people) in Hanwang township. An agreement was signed in February 2010 and the project officially kicked off with an opening ceremony on 6 April. The objective of the water component is to reduce the vulnerability of earthquake-affected populations of eight villages of Hanwang township, Mianzhu, from water-borne diseases by improving the availability and accessibility to safe drinking water and empowering community members on water governance and improved hygiene behaviour.

The communities' economic base is agricultural production, both livestock and crop. While this planned centralized water system would be the first experience with a reliable safe water source, a user-fee system will be charged to families who decide to link into this initiative.

RCSC, with the support of IFRC, is funding approximately 53 per cent of the water project and giving both technical and management support. Mianzhu Red Cross branch will oversee the hygiene promotion activities in collaboration with the relevant offices of the Mianzhu Health Bureau.

The Hanwang township government will be informing and mobilizing the communities on the project throughout its implementation stages. Communities are encouraged to protect the water system by reporting any breakage or leakage in the system to the technical staff.

Discussions of the bio-gas latrines project with all concerned authorities was restarted in early December 2009 after it was placed on hold due to general social unrest in the communities. It has since been cancelled due to the sudden bringing forward of the deadline by to 12 May 2010 from the original deadline of 31 October 2010. The change was officially announced in March, although the 12 May 2010 deadline was issued by the central government in advance. This left no time for IFRC to complete the project with an assurance on quality. A replacement water supply project in Gongxing, Mianzhu is under discussion with the RCSC and Mianzhu Water Bureau at time of reporting.



The water sanitation team has been working with the local county water bureau in finalizing the Hanwang water project.
IFRC/ Melisa Tan

IFRC is supporting the development of RCSC ERTs, cross-cutting with disaster management to strengthen the disaster response capacities of RCSC. The water sanitation delegate assisted in the review of the ERU deployments and continues to provide technical support to RCSC to establish their ERT capacity in three centralized locations. The next step is to for the three designated branches to prepare their equipment and personnel for disaster response deployment. This includes refurbishment of equipment, preparation of manuals, training of personnel using both classroom and simulation exercises. In November 2009, through the support of the Federation, an RCSC staff designated as the ERT focal person participated in the water and sanitation RDRT training in Indonesia. In May, the water and sanitation delegate will visit three branches to review the RCSC's 2-year ERT strategy and plan.

| Livelihoods |
|--|
| Objective 1: (Early Recovery Phase 6 to 12 months): To provide vulnerable families with enough income/resources to survive winter and start reconstructing their houses. |
| Expected results <ul style="list-style-type: none"> • Up to 15,000 vulnerable families receive support to generate their income or resources. • The vulnerable families start livelihoods activity and reconstruction of their houses by the spring of 2009. |
| (Reconstruction and Longer-Term Recovery Phase: 13 to 31 months): |
| Objective 2: Vulnerable families have means (both skills and resources), to rehabilitate their livelihoods. |
| Objective 3: Vulnerable families have sustainable livelihoods and develop their livelihoods strategy. |
| Expected results <ul style="list-style-type: none"> • The livelihoods needs and appropriate livelihoods interventions are developed by April 2009. • Up to 4,000 vulnerable people receive appropriate training to have a stable income source. • The necessary livelihoods assets are replaced or rehabilitated. • The vulnerable families will have at least one stable income source. • The people develop sustainable livelihoods. |

Progress: IFRC is helping communities improve their livelihoods through the provision of microfinance as well as vocational and business training in partnership with the International Labour Organization (ILO), Mianzhu Labour Bureau and Mianzhu branch of Disabled People's Federation of China. It is targeting nearly 6,000 beneficiaries from two groups of earthquake-affected people; relocated farmers and the disabled.

Since the July and August meetings in 2009, RCSC and IFRC have worked together to develop a feasible plan of action based on various options appropriate to the current situation. Employment promotion projects such as vocational training, business training and providing financial help to vulnerable earthquake affected groups of population in a form of low-interest microloans have been planned.

A project agreement to support livelihoods projects in the affected areas was finally signed in November 2009. Further agreements with ILO for vocational and business training and PlaNNet Finance for microfinance assessments were also signed in November.

A series of assessments conducted in January, 2010 have helped identify the most pressing financial and training needs of the communities and how they can be supported after accessing vocational training and microfinance tools. These assessments have been critical in the drawing up the selection criteria process and in defining the composition of training programmes. They are also crucial in helping to form microfinance service delivery mechanisms.

Training

After a delay of five months against the original timeframe, programme implementation began with the start of vocational and business training on 23 March 2010. This was preceded by an opening ceremony on the same day that was attended by representatives from RCSC headquarters, Deyang and Mianzhu branches and representatives from key partners such as the Regional Director-General from ILO, the Director of Mianzhu Labour Bureau and local government bureaus including the Vice-Mayor of Mianzhu county.

The delays were largely caused by the focus on completion of the housing programme by all key stakeholders. The housing construction side of recovery support to the earthquake-affected population has since been completed, and so focus has moved to other recovery activities such as livelihoods and other community-based programmes. There is a strong commitment within RCSC and the Federation to push forward with the programme now and significant progress has been made, especially in the last few weeks. More significantly, the livelihoods programme has gained support from the local county and township governments and this has been crucial in ensuring a smooth progress leading up to the start of training.

Some 300 people from Qingping township who had enrolled in a range of courses started lessons after the opening ceremony, and for many, the lessons represented the first ever opportunity to enrol in any form of training. Qualified trainers from training institutions under the auspices of the Mianzhu Labour Bureau taught classes in entrepreneurship, tourism, kiwi farming and animal husbandry. Although most of these trainers have been providing training for many years, the Federation's collaboration with ILO has helped boost these trainers' training skills through the introduction of materials (such as E-SYB) and training methods and techniques developed and used by ILO globally.

A community meeting with village leaders was also organized on the same day. IFRC, ILO and the Mianzhu Labour Bureau met with 35 natural village leaders from Qingping township to promote the programme, its objectives and benefits. Roles were outlined, questions raised, basic information collected and village leaders were invited to assist in promoting the programme and in identifying the most vulnerable within their communities who need and can benefit from the programme. An information leaflet was disseminated along with the number for the telephone helpline that was established within the Mianzhu Labour Bureau to deal with telephone inquiries from beneficiaries. Community meetings with village leaders in Tianshi and Jinhua townships will take place in May 2010.

There were some people who were unable to take lessons when courses started in March due to reasons such as the lack of transportation, those that had missed out on applying for the first term or those having to tend to their very young children. However, the Federation's training component also includes mobile trainings, which are delivered at village level and are targeted towards those lacking education and transportation. This is expected to solve some of the difficulties faced by those who had missed out this time. Mobile trainings at community level began in April. The second term is expected to begin in May and those missing out on the classroom-based trainings in March will have an opportunity to take lessons then.



The opening ceremony on 23 March, 2010 kicked off the start of vocational and business training in Qingping township. The RCSC and the Federation, along with its key partners; ILO, Mianzhu Labour Bureau and townships authorities, were present to promote the availability of these training courses. About 300 people began classes that day. Melisa Tan/ IFRC.



Good working relations between the Federation, ILO and the Mianzhu Labour Bureau have made the implementation of the training component smooth so far. Applications for training are received and screened by the Mianzhu Labour Bureau and ILO according to the selection criteria. If needed, interviews are also conducted. This ensures only the most vulnerable are reached.

Working Group

The formation of a working group is aimed at fostering cooperative planning for the implementation of the programme's activities among key stakeholders (including British and Japanese Red Cross societies). It provides a forum for the exchange of views and information on implementation, provides regular monitoring, and review when necessary, and provides guidance and oversight to programme implementation.

Training for the working group was held on 11 March, mainly to discuss preparations towards the training component. Representatives from IFRC, ILO, Deyang and Mianzhu branches of the RCSC, Mianzhu branch of Disabled People's Federation and the Mianzhu Labour Bureau discussed the training component's status and agreed to start training on 23 March in Qingping township, the largest targeted township in Mianzhu county. Training plans, division of responsibilities and fund transfer mechanisms to cover training costs were also discussed and approved by the working group. The terms of reference for the working group were also developed, with a following meeting held in April.

Microfinance

The microfinance component aims to provide vulnerable earthquake affected groups with financial means in a form of subsidized or loss-making loans to (re)start income generating activities. This component includes facilitating poverty reduction strategies, supporting micro and small businesses, and expanding the financial frontier to include previously excluded clienteles. RCSC and IFRC are working towards proper utilization of innovative lending technologies, new financial products and appropriate pricing for poor or low-income earthquake affected people. A partnership with PlaNet Finance, an experienced microfinance specialized international non-governmental organization which assessed finance and microfinance institutions that could serve as Red Cross Red Crescent partners, helped to better understand the challenges and opportunities for the microfinance segment of the livelihoods programme.

RCSC and the Federation now are in a process of establishing a mutually beneficial partnership with a local financial institution. The best microfinance institutional model has been already defined, discussed and approved by the stakeholders. Programme partners have set forth the beneficiary selection criteria and will continuously oversee this component to ensure that the most vulnerable are reached.

The microfinance component will target beneficiaries that do not have access to existing loan schemes due to the conditions generally imposed by financial institutions, such as a lack of collateral/guarantee, age limit or proof of stable employment. Implementation of microfinance is expected to roll out in June-July.

Challenges: The project was scheduled to commence in September 2009 but experienced some delays along with the shelter programme. RCSC capacity was also stretched as all resources and efforts were being put into the shelter programme which was approaching a critical stage. In November, local governments once again cited their concerns about the potential for social unrest and this led to a temporary halt of all Federation programmes. Even though the issues were resolved and paved the way for the start of shelter support cash grants distributions at the end of 2009, implementation of all Federation programmes was placed on hold until the completion of cash distributions.

Almost all activities came to a halt due to the Chinese New Year holidays. Assessments were completed prior to the national-level holidays but reports on the outcomes and recommendations for the training component could only be completed at the end of February 2010. Based on discussions with financial institutions thus far, the interest shown by these institutions in implementing microfinance is high but very much geared towards a high profit margin model. This is not in line with the objectives of the programme and the Federation experienced some challenges and delays in finding a suitable partner in the implementation of this component.

Concerns about the programme completing by December 2010 are being addressed between IFRC and RCSC leadership. As most of the IFRC's community-based programmes were delayed until the shelter cash grants were distributed, discussions to extend IFRC programmes till beyond December 2010 are ongoing.

| |
|--|
| Disaster management |
| Objective 1 (Recovery Phase: 7 to 31 months): To reduce the vulnerability of the population in Sichuan Province in areas where village home reconstruction is taking place by improving community capacity to plan and implement appropriate risk reduction initiatives addressing their local hazards. |
| Expected results <ul style="list-style-type: none"> • The affected Red Cross branches develop their capacities in community-based disaster management in future. • The affected communities learn how to respond during earthquakes and other disasters. |
| Objective 2 (Recovery Phase: 7 to 31 months): To reduce vulnerability of the population prior to the onset of natural disasters in affected areas of Gansu and Shaanxi provinces by improving community capacity to plan and implement appropriate risk reduction initiatives addressing their local hazards. |
| Expected results <ul style="list-style-type: none"> • Volunteers and staff of the RCSC in Gansu and Shaanxi can provide improved risk analysis, including assessment of local vulnerabilities and capacities for effective disaster risk reduction and mitigation measures. • Targeted communities in Gansu and Shaanxi have capacity to monitor local disaster risks and use their risk analysis to develop the institutional disaster planning. |
| Objective 3 (Recovery Phase: 7 to 31 months): RCSC builds its capacity to effectively and quickly respond to emergencies in the future. |
| Expected results <ul style="list-style-type: none"> • RCSC develops three disaster preparedness centres in the affected areas. |

Progress: With earthquakes, floods and other natural disasters frequently hitting the country, preparing for and coping with disasters is not enough in terms of reducing risk and building safer communities. Strengthening disaster management will entail a range of different approaches, including the establishment of disaster preparedness centres, a strengthened infrastructure, the training and preparedness of volunteers, establishment of warehouses, logistics support, and human resources for effective implementation.

The programme is implemented in coordination with the ongoing community disaster preparedness programmes of the National Society. RCSC will concentrate efforts to reduce the vulnerability of communities by enhancing their capacity to plan and implement appropriate disaster risk reduction activities that prepare them for potential future disasters. For example, IFRC will support the set up of nine disaster preparedness centres in the affected provinces to facilitate relief activities, provide localized storage and act as distribution hubs.

RCSC has also requested IFRC's support in strengthening their capacities to serve the needs of beneficiaries not only in Sichuan, where the majority of the revised appeal's community-based programmes are concentrated, but in Gansu and Shaanxi provinces as well. As such, IFRC is extending its reach to earthquake-affected communities in those two provinces through its support of the RCSC's community-based disaster preparedness model, which has been a successful model in recent years after its development with support of many partners.

Community-based disaster preparedness (CBDP)

30 villages in Gansu and Shaanxi are selected for the community-based disaster preparedness programme. The number of direct beneficiaries is estimated to total approximately 20,000¹³ men, women and children (about 80 percent of population of all selected villages).

A vulnerability and capacity assessment (VCA) was carried out in the 30 villages prior to implementation, which will provide detailed analysis of training needs, mitigation measures, timeframe, complementary support needed from the government, and the villages' own contributions. A programme planning and VCA analysis workshop in Shaanxi and Gansu was conducted in April and May 2010, contributing to the identification of disaster risk reduction measures including knowledge and awareness activities in each of the village and their selection strategy. In May, the first draft of the provincial CBDP handbook will be finalized for further editing efforts.

¹³ The average population per village in Gansu and Shaanxi is 850 people. CBDP is expected to reach 80 per cent of the total population (about 20,000 in 30 villages).

In addition to benefiting communities, CDBP also aims to build the capacity of local Red Cross branches. Although both provinces frequently face natural disasters such as drought, floods and landslides, disaster preparedness programmes, especially ones involving community participation, are new to the branches. Furthermore, apart from certain health programmes (e.g. HIV awareness promotion), these branches have limited experience implementing internationally supported programmes. Unlike Sichuan, where CDBP is currently being implemented with the support of the Hong Kong branch of the RCSC, CDBP will be introduced for the first time in Gansu and Shaanxi Red Cross branches. The programme will improve project management skills and knowledge, and result in greater institutional linkages.



County branch was conducting group discussion with communities during VCA in Muchang Village, Gansu Longnan Prefecture. RCSC.

Disaster preparedness centres

Further from recovery and rehabilitation efforts in Sichuan, Gansu and Shaanxi, the devastating earthquake also provided the impetus for RCSC to further enhance its disaster response capacity, especially in the event of large-scale disasters. RCSC has little resources in available relief stock and emergency response equipment and staff. Its capacity in planning and implementing emergency response is also limited and not tied to SPHERE standards and other international recognized benchmarks.



The county branch also inspected a collapsed riverbank and bridge in Wahuang Village, Qinan county, Gansu Tianshui prefecture as part of the VCA conducted. RCSC.

To build the National Society's prefecture level capacity in distributing emergency relief effectively, the Federation is supporting RCSC towards nine disaster preparedness centres in Sichuan, Gansu and Shaanxi, and three additional centres specifically for the emergency response teams (see ERT section below).

RCSC has started the process of acquiring land and is currently in discussions with authorities with regards to land issues. Building designs and construction plans are also being determined. Once land is acquired and building designs are approved, construction is expected to take about four to five months to complete. Site inspections will be conducted by an IFRC team, including the Asia Pacific zone office's water and sanitation delegate, to confirm disaster preparedness centre sites and support further planning of the ERT setup.

Emergency response teams (ERTs)

IFRC, together with Austrian and Spanish Red Cross representatives who were part of the water and sanitation ERU deployment, conducted an assessment in July 2009. Included in the assessment were inspections of all preliminary selected provincial branches and assessing their capacity in storing ERT equipment and in operating emergency response with the resources provided. A plan was developed based on the recommendations from this assessment, with the Federation agreeing to support provincial branches through the building up of three disaster preparedness centres specifically for the mobilization of ERTs. In addition to equipment, the disaster preparedness centres and ERTs will also be equipped with emergency response planning and operated by trained provincial Red Cross staff under the auspices of RCSC headquarters.

An ERT meeting with the RCSC headquarters and six provincial Red Cross in Changsha, Hunan was conducted in December 2009. In this meeting, all attendees reached the consensus that the RCSC headquarters should retain ownership of the ERT equipment while its management will remain with the branches. Also, a plan of action was drafted for 2010 which includes equipment relocation, refurbishment

trainings. The three provinces identified to locate the water and sanitation ERT include Yunnan, Hubei and Hunan. These three provinces, located in central and southern part of China, are selected in consideration of their location advantages, existing capacity in rapid emergency response and experience in programme management. Its track record in emergency response also extends to surrounding disaster-prone provinces. In the aftermath of the Sichuan earthquake, representatives from Yunnan, Hubei and Hunan provincial branches were selected to work alongside partner national society staff (Austrian, British and Spanish Red Cross societies) that were deployed along with the water and mass sanitation emergency response units (ERUs). During the course of the deployment, RCSC staff from these branches had the opportunity to build up their basic understanding in operating the various water and sanitation equipment, which were eventually handed over to the RCSC.

A team will be based in each of these three provincial branches. Around 80 personnel and volunteers will be trained in emergency assessment, rescue and first aid, and will utilize equipment from the donated ERUs when mobilized. Each ERT will have the capacity to provide water and sanitation support to 10,000 people. It will also support neighbouring provinces in the event of a disaster under the coordination of RCSC headquarters.

Capacity building and organizational development

While capacity building activities have been built into each sector area throughout each phase of the earthquake response, there remain other important opportunities for IFRC to support RCSC in their own organizational development in addition to the construction of Red Cross disaster preparedness centres and the establishment of national emergency response units that can be deployed in future disasters.

IFRC will support the National Society in further strengthening financial, volunteer and general programme management through this appeal. Analysis of existing systems and joint planning will identify how these programmes can be boosted. Workshops for relevant RCSC staff will be held to introduce and implement best practices and share experiences from the disaster.

Disaster management

Two disaster management staff from the RCSC headquarters, along with the deputy director of the first aid department of Sichuan Red Cross branch, participated in a regional emergency assessment workshop in March 2009 that was organized and facilitated by IFRC. The workshop utilized IFRC's "2008 Emergency Assessment Guidelines" and concepts such as assessments, assessment terms of reference, and self-assessment of response capacity were introduced, along with IFRC's assessment report, plan of action and appeals processes, and linkages between assessments and other IFRC tools such as vulnerability and capacity assessment (VCA), well-prepared national society (WPNS) and better programming initiatives (BPI).

IFRC also translated five VCA manuals into Chinese and distributed 110 sets to RCSC headquarters, and distributed to 13 RCSC provincial branches that are implementing the CBDP projects and the Chengdu operations support office.

To implement the CBDP project in Gansu and Shaanxi, new staff will be recruited to support the set up in county-level Red Cross branches. While the programme will be implemented by county Red Cross branches, support will also be provided by provincial and RCSC headquarters, thereby strengthening the capacity of these branches. Provincial Red Cross branches will provide trainings using developed information, education and communication materials to prefecture and county level branches, who in turn will train villagers. Trainings on disaster and project management, technical skills to conduct vulnerability assessments, first aid and disaster preparedness measures among others will also be provided. Coupled with monitoring and evaluation systems that are built into the programme, Red Cross staff and volunteers will be able to effectively manage the programme.

Health and psychosocial support (PSP)

A workshop piloting the new health in emergencies model was held in Beijing in October 2008, with a majority of the participants came from China, specifically from the earthquake area or professionals who are being trained to respond to China's natural disasters in the future.

Following the regional CBHFA sensitization workshop in Beijing in April 2009, the health team organized a CBHFA sensitization workshop in Sichuan Red Cross branch to introduce the new version of CBHFA. Altogether 19 first aid and management level staff from 16 prefecture level branches within Sichuan participated in this workshop, which was aimed at raising CBHFA awareness.

In September 2009, PSP concept and tools in the PSP project was introduced to Sichuan branch and the volunteers in a volunteer review meeting. About 50 volunteers were received training in Introduction about

psychosocial support programme. This was to allow them to have a better understanding about PSP in preparation for the provincial disaster preparedness exercise.

In December 2009 PSP training was conducted for 30 Yunnan Red Cross mental health volunteers to further increase their capacities in responding during emergencies and non-emergencies.

Water, sanitation and hygiene promotion

A water and sanitation workshop was organized in Chengdu by RCSC and the IFRC water and sanitation delegate in November 2008 to strengthen RCSC knowledge and shared learning about water and sanitation in emergencies. The water and sanitation delegate and the RCSC water and sanitation focal point also attended the East Asia regional health/water and sanitation meeting and CBHFA sensitization workshop in Beijing in April 2009.

The donated water sanitation ERU equipment joint review took place on 6-29 June 2009 and was participated by staff from RCSC, Spanish Red Cross and the Federation. It included branch visits (Spanish Red Cross donated equipment was stored in branches of Nanchong, Hubei, Jiangxi, Guangxi while the Austrian Red Cross donated equipment was stored in the Hunan branch), discussions in Beijing and the drafting of a report. The review did not include the Spanish Red Cross' donated equipment stored in Shanghai and British Red Cross donated mass sanitation equipment stored in Yunnan. Findings and recommendations were presented in a report document. *For further information on this document, please contact the East Asia regional office.*

The RCSC headquarters water and sanitation focal person participated in the water and sanitation RDRT training in Indonesia in November 2009.

Livelihood

A training for RCSC volunteers in Deyang was conducted by a consultant (with support of British Red Cross), contracted by IFRC for 30 RCSC Deyang branch volunteers in January 2009 in Mianzhu county, aimed at preparing volunteers to implement IFRC's livelihoods projects in the communities. These RCSC volunteers learned topics such as non-violent communication, the basic concepts of sustainable livelihoods and how to conduct monitoring and evaluation in addition to receiving Red Cross Red Crescent awareness dissemination. These volunteers were to be directly involved in the implementation of the livelihoods cash transfer programme in the affected areas.

Another training on the cash transfer programme was also conducted in January 2010 for RCSC management and staff from headquarters, Sichuan, Gansu and Shaanxi provinces, and representatives from Taiwan Red Cross Organization and Hong Kong branch of the RCSC. The cash transfer training included project cycle management and demonstrated how conditional and unconditional cash transfers can be an effective option in responding to the needs of those affected by a disaster. Materials for the cash transfer workshop were designed by the British Red Cross, Oxfam UK and Save the Children UK, and used a special methodology focused on adult learning principles. This is the first time a cash transfer programme workshop was organized in China as the cash transfer concept has never been used by RCSC before.



On 7 April, Federation staff visited mobile trainings on kiwi farming and starting a bed and breakfast in some villages in Qingping township. As part of the Federation's effort to maximize the impact of trainings for those intending to start their own businesses, an information session on pig husbandry was held to provide insights and advice on the feasibility, benefits and challenges of running a pig farm. RCSC

Although these trainings were successful and interesting for participants, changes in the programme meant that this cash transfer programme was not able to be carried out as initially planned.

With the revised livelihoods plan of action, in December 2009, 13 people were recruited for the Mianzhu branch of RCSC (three staff) and the Mianzhu Labour Bureau (ten staff). The new staff, funded by IFRC, will focus solely on implementing the livelihoods programme within both offices. IFRC conducted a training in 22-23 December for 20 people from RCSC headquarters, Sichuan, Deyang and Mianzhu branches, including new staff recruited for the livelihoods programme and staff from the Mianzhu Labour Bureau. The trainings provided information on IFRC processes in finance, logistics and reporting and more importantly, include sessions directly relating to the implementation of the livelihoods programme such as conducting assessments. This training aimed to get this group of people prepared for implementing the livelihoods programme in regard to the vocational training and microfinance components.

On 16 March 2010, prior to the opening ceremony of the training component, another livelihoods programme training was conducted for staff from the Mianzhu Labour Bureau, ILO, and Mianzhu and Deyang Red branches of the RCSC. The training provided information on the Federation processed in basic finance, procurement and logistics and reporting, and includes the general aspects of employment promotion and microfinance. This training aimed to get this group of people prepared for implementing the livelihoods programme in vocational training and microfinance components.

Organizational development

A two-day training in December 2009 was delivered to old and newly-recruited RCSC staff to learn and/or refresh the knowledge about Federation's administrative/financial tools, regulations and reporting requirements. Sixteen RCSC staff including senior staff representing headquarters and two specialists from the Mianzhu Labour Bureau attended the training and received certificates. A similar training was also conducted in August for around 40 RCSC staff.

Coordination and partnerships

IFRC has been and will continue to support the RCSC in coordinating Red Cross Red Crescent Movement efforts. At the request of the RCSC leadership, the IFRC continues to play an important role in coordinating all Red Cross Red Crescent Movement support to the earthquake operations. The RCSC has requested that the Movement take a unified approach towards responding to the needs of Red Cross beneficiaries and supporting RCSC throughout the response.

Up to four partnership meetings have been held for support to the RCSC earthquake operations, and have enabled RCSC, IFRC and partners to summarize activities to date, understand technical recommendations and agree upon priority areas for plans of action. The latest partnership meeting held in Xiamen in March 2010 enabled all partners to have a clearer understanding of the latest developments in the field and permitted RCSC, IFRC and all partners to collectively discuss and agree on the way forward in regards to the adjusted shelter plan. These meetings are supplemented with frequent communications with both multilateral and bilateral partners.

Close coordination between IFRC and various organizations such as Build Change and Handicap International have thus far been positive. This collaboration is valued by the relevant parties as it helps with information sharing and the leveraging of additional resources. Handicap International cooperation has been crucial in identifying and supporting injured earthquake survivors who are no longer covered by free medical care and linking them to outside resources, and it has also been an important tool to maximize the impact of IFRC construction support.

Coordination efforts between the IFRC operations support team, the RCSC at all levels and relevant official agencies have been positive and have helped facilitate a rapid response. In the past few months, close contact between RCSC headquarters in Beijing and Chengdu has been critical in finding solutions towards reconstruction and recovery challenges.

Capacity of the Red Cross Society of China

The Red Cross Society of China was founded in 1904, becoming one of the first members of IFRC in 1919. The mission of the RCSC is reflected in its law, acknowledged by central and provincial governments, and is reflective of the good working relationship with the government, particularly in the fields of relief and health activities. Today with over 21 million members, a headquarters in Beijing and established provincial and

municipality branches corresponding to state administrative units, the RCSC is well placed to act as a valuable auxiliary partner to the government in times of disaster.

In recent years, China has experienced many earthquakes, during which RCSC has conducted key relief activities. In addition, the RCSC has responded to massive disasters caused by typhoons, torrential rains and snow in the past few years. Through these experiences, the RCSC has improved its response mechanisms to deliver assistance to affected individuals. When disaster strikes, RCSC branches at the provincial and local levels immediately launch local appeals for funding and collect items such as warm clothing to assist those affected by disasters.

The RCSC maintains a nationwide network of six regional disaster preparedness centres. These are essentially warehouses with stocks of relief supplies, but they also serve as focal points for training staff in disaster management, including logistics, report writing skills and first aid, tailored to different kinds of disasters.

Capacity of IFRC

IFRC's East Asia regional office in Beijing comprises of a head of office and specialist delegates in disaster management, health and care, planning, monitoring, evaluation and reporting, media and communications, finance and skilled local staff. The regional office is backed by a team of staff in IFRC's Asia Pacific zone office in Kuala Lumpur.

IFRC's operations support team in Chengdu, Sichuan province, provides support as necessary to the RCSC to implement the operation successfully. As of the end of April 2010, the IFRC's team consists of a head of office and technical delegates in health and psychosocial care, water and sanitation, recovery/livelihoods and finance. A strong team of national staff provides further support to the team to support the considerable number of national society staff and volunteers in the implementation of the programmes.

The Chengdu office coordinates with the RCSC office in Sichuan, the local authorities and partner national society representatives to manage operation programme activities. The regional office in Beijing will continue to coordinate with the RCSC headquarters for Gansu and Shaanxi programming. Furthermore, the Beijing office will also continue to hold regular meetings with the RCSC senior management.

Communications – Advocacy and Public Information

Communications actions have focused on documenting the progress of IFRC and other Red Cross Red Crescent programming in the Sichuan earthquake zone, despite challenges and changes on the ground. In response to the first major distribution of shelter support funds and in anticipation of global interest in the two year anniversary of the earthquake, a comprehensive package of beneficiary profiles and other documents with photographs was prepared for use by media, donors and national societies around the world. Material has been widely utilized and distributed.

Support was also provided to other programme areas such as CBHFA/PSP and livelihoods for documenting their trainings, including the production of a CBHFA training report and the filming of livelihoods training in Qingping and Jiulong townships in Mianzhu.

Ahead of the second anniversary of the Sichuan earthquake, a communication mission to visit Sichuan was organized to gather material, stories, photographs and video. A total of two schools in Guangyuan prefecture were visited to interview primary school children who took part in a photographic competition organized by American Red Cross.

Contacts with international media are being pursued on an ongoing basis to plan possible visits to Red Cross Red Crescent Movement programmes if there is sufficient interest in covering the second anniversary of the disaster.

Possible focus areas for media visits may include further livelihoods training, hospitals and school and shelter projects. The aim is to be able to show a situation that has in large measure returned to normal for many people living in the disaster area.

How we work

All International Federation assistance seeks to adhere to the [Code of Conduct for the International Red Cross and Red Crescent Movement and Non-Governmental Organizations \(NGOs\) in Disaster Relief](#) and the [Humanitarian Charter and Minimum Standards in Disaster Response \(Sphere\)](#) in delivering assistance to the most vulnerable.

The IFRC's vision is to inspire, encourage, facilitate and promote at all times all forms of humanitarian activities by National Societies, with a view to preventing and alleviating human suffering, and thereby contributing to the maintenance and promotion of human dignity and peace in the world.

The IFRC's work is guided by [Strategy 2020](#) which puts forward three strategic aims:

1. Save lives, protect livelihoods, and strengthen recovery from disaster and crises.
2. Enable healthy and safe living.
3. Promote social inclusion and a culture of non-violence and peace.

Contact information

For further information specifically related to this operation please contact:

- Red Cross Society of China: Mr. Wang Xiaohua, director of external relations department; email: rcsc@redcross.org.cn; phone: +86.10.6404.8366, fax +86.10.6402.9928.
- Federation East Asia regional office in China: Mr. Carl Naucler, head of regional office, mobile: +86 10 6532 7162, email: carl.naucler@ifrc.org
- Federation Sichuan earthquake operations office in Chengdu: Mr. Warwick Inder, interim head of reconstruction and recovery, mobile: +86 139 0817 3052, email: warwick.inder@extra.co.nz
- Federation zone office in Kuala Lumpur:
 - Jagan Chapagain, head of operations, phone: +603 9207 5700, email: jagan.chapagain@ifrc.org
 - Daniel Bolanos, operations coordinator, mobile: +60122837305, email: daniel.bolanos@ifrc.org
 - Jeremy Francis, regional logistics coordinator, phone: +603 9207 5753, fax: +603 2168 8573, email: jeremy.francis@ifrc.org
 - For pledges of funding: Penny Elghady, resource mobilization and PMER coordinator, phone: +603 9207 5775, email: penny.elghady@ifrc.org.
 - Please send all funding pledges to zonerm.asiapacific@ifrc.org.
 - For media enquiries: Francis Markus (Chengdu), communications delegate, mobile: +86 1391 0096 892, email : francis.markus@ifrc.org; or Jason Smith (KL), zone communications manager, mobile: +6012 387 0829, email: jason.smith@ifrc.org

*[< interim financial report and map of affected areas below;](#)
[click here to return to the title page>](#)*

International Federation of Red Cross and Red Crescent Societies

MDRCN003 - China - Sichuan Earthquake

Interim Financial Report

| Selected Parameters | |
|---------------------|----------------|
| Reporting Timeframe | 2008/5-2010/3 |
| Budget Timeframe | 2008/5-2010/12 |
| Appeal | MDRCN003 |
| Budget | APPEAL |

All figures are in Swiss Francs (CHF)

I. Consolidated Response to Appeal

| | Disaster Management | Health and Social Services | National Society Development | Principles and Values | Coordination | TOTAL |
|---------------------------|---------------------|----------------------------|------------------------------|-----------------------|------------------|--------------------|
| A. Budget | 155,910,895 | 7,194,363 | | | 3,997,110 | 167,102,368 |
| B. Opening Balance | 0 | 0 | | | 0 | 0 |

Income

Cash contributions

| | | | | | | |
|--|------------|-----------|--|--|---------|------------|
| American Government | 520,000 | | | | | 520,000 |
| American Red Cross | 26,717,424 | | | | | 26,717,424 |
| Australian Red Cross | 5,206,819 | 998,000 | | | 514,859 | 6,719,678 |
| Australian Red Cross (from Australian Government) | 995,500 | | | | | 995,500 |
| Austria - Private Donors | 485 | | | | | 485 |
| Belgian Red Cross (Flanders) | 93,682 | | | | | 93,682 |
| Belgian Red Cross (Flanders) (from Belgian Federal Government) | 36,523 | | | | | 36,523 |
| Brazil - Private Donors | 6,373 | | | | | 6,373 |
| British Red Cross | 3,156,284 | 50,750 | | | | 3,207,034 |
| Bulgarian Red Cross | 5,000 | | | | | 5,000 |
| Cambodia - Private Donors | 170 | | | | | 170 |
| Canada - Private Donors | 5,200 | | | | | 5,200 |
| Canadian Red Cross | 14,143,014 | 2,080,000 | | | | 16,223,014 |
| Canadian Red Cross (from Canadian Government) | 17,816,762 | | | | | 17,816,762 |
| Charities Aid Foundation | | 98,414 | | | | 98,414 |
| China - Private Donors | 32 | | | | | 32 |
| Cook Islands Red Cross | 78 | | | | | 78 |
| Croatian Red Cross | 24,882 | | | | | 24,882 |
| Czech Red Cross | 10,202 | | | | | 10,202 |
| Danish Red Cross | 10,749 | 11,539 | | | | 22,289 |
| Danish Red Cross (from Danish Government) | 154,622 | 515,408 | | | | 670,030 |
| DELL Direct Giving Campaign | 525 | | | | 89,342 | 89,867 |
| Estonia Red Cross | 4,035 | | | | | 4,035 |
| Finnish Red Cross | 418,224 | | | | | 418,224 |
| Finnish Red Cross (from Finnish Government) | 692,936 | | | | | 692,936 |
| France - Private Donors | 2,668 | | | | | 2,668 |
| French Red Cross | 675,518 | | | | | 675,518 |
| Germany - Private Donors | 121 | | | | | 121 |
| Germany - Private Donors (from Switzerland - Private Donors) | 100 | | | | | 100 |
| Germany Red Cross | 167,633 | | | | | 167,633 |
| Great Britain - Private Donors | 22,503 | | | | | 22,503 |
| Greek Government | | 327,000 | | | | 327,000 |
| IATA | 8,650 | | | | | 8,650 |
| Icelandic Red Cross (from Icelandic Government) | 109,646 | | | | | 109,646 |
| ICRC (from Unidentified donor) | 153 | | | | | 153 |
| Indian Red Cross | 32,773 | | | | | 32,773 |
| Indian Red Cross (from India - Private Donors) | 3,481 | | | | | 3,481 |
| India - Private Donors | 5,040 | | | | | 5,040 |
| Indonesia - Private Donors | 2,209 | | | | | 2,209 |
| Infineum UK Ltd | | 70,413 | | | | 70,413 |
| Ireland - Private Donors | 1,256 | | | | | 1,256 |
| Irish Government | 1,627,000 | | | | | 1,627,000 |
| Irish Red Cross | 346,715 | 15,094 | | | | 361,809 |
| Italian Govt Bilateral Emergency Fund | 917,700 | | | | 694,450 | 1,612,150 |

International Federation of Red Cross and Red Crescent Societies

MDRCN003 - China - Sichuan Earthquake

Interim Financial Report

| Selected Parameters | |
|---------------------|----------------|
| Reporting Timeframe | 2008/5-2010/3 |
| Budget Timeframe | 2008/5-2010/12 |
| Appeal | MDRCN003 |
| Budget | APPEAL |

All figures are in Swiss Francs (CHF)

| | | | | |
|---|------------|-----------|---------|------------|
| Japanese Government | 1,785,000 | | | 1,785,000 |
| Japanese Red Cross | 24,278,180 | 1,355,070 | 429,002 | 26,062,252 |
| Japan - Private Donors | 3,150 | | | 3,150 |
| Lithuanian Red Cross | 976 | | | 976 |
| Luxembourg Government | 24,150 | 80,750 | | 104,900 |
| Malaysian Red Crescent | 10,546 | | | 10,546 |
| Malaysia - Private Donors | 1,780 | | | 1,780 |
| Mauritius Red Cross | 191 | | | 191 |
| Monaco Red Cross | | | 114,914 | 114,914 |
| Netherlands - Private Donors | 8,335 | | | 8,335 |
| Netherlands Red Cross | 1,025,922 | | | 1,025,922 |
| Netherlands Red Cross (from Netherlands Government) | 12,000 | 801,500 | | 813,500 |
| New York Office (from Adams Street Partners) | 3,000 | | | 3,000 |
| New York Office (from Alcatel Lucent) | 157,661 | | | 157,661 |
| New York Office (from Applied Materials) | 15,686 | | | 15,686 |
| New York Office (from Bechtel Group Foundation) | 3,037 | 57,698 | | 60,735 |
| New York Office (from Black Rock) | 53,573 | 29,950 | | 83,524 |
| New York Office (from Citadel Investment group) | 2,347 | 44,590 | | 46,937 |
| New York Office (from Codexis) | 1,763 | | | 1,763 |
| New York Office (from EMC Corp.) | 80,360 | | 104,447 | 184,807 |
| New York Office (from Fibrogen) | 10,961 | | | 10,961 |
| New York Office (from Genzyme Corporation) | 11,786 | | | 11,786 |
| New York Office (from Heinz H.J. Company) | 105,107 | | | 105,107 |
| New York Office (from Hospira) | 105,107 | | | 105,107 |
| New York Office (from Huber) | 52,554 | | | 52,554 |
| New York Office (from Jones apparel Group) | 1,171 | | 21,804 | 22,975 |
| New York Office (from Kraft Foods) | | 157,500 | | 157,500 |
| New York Office (from Mellon Bank) | 26,787 | | | 26,787 |
| New York Office (from Monsanto Foundation) | 56,398 | | | 56,398 |
| New York Office (from Motorola Foundation) | 1,532 | 29,112 | | 30,644 |
| New York Office (from New York Life) | 125,345 | | | 125,345 |
| New York Office (from Otis LG Elevator Co) | 7,143 | | | 7,143 |
| New York Office (from PricewaterhouseCoopers) | | | 278,531 | 278,531 |
| New York Office (from Schering Plough) | 29,309 | | | 29,309 |
| New York Office (from THERMO FISCHER) | 1,071 | 20,358 | | 21,429 |
| New York Office (from United States - Private Donors) | 10,525 | | 39,085 | 49,610 |
| New York Office (from United Technologies) | 12,475 | 237,021 | | 249,496 |
| New York Office (from Yahoo) | 8,572 | | | 8,572 |
| New Zealand Red Cross | 186,719 | | 235,893 | 422,612 |
| New Zealand Red Cross (from New Zealand Government) | 664,365 | | | 664,365 |
| Nigeria private donors | 1,024 | | | 1,024 |
| Norwegian Red Cross | 87,122 | | | 87,122 |
| Norwegian Red Cross (from Norwegian Government) | 373,383 | | | 373,383 |
| Office of the Representative of the Dalai Lama | 52,671 | | | 52,671 |
| On Line donations | 97,555 | 301,864 | 360,777 | 760,197 |
| OPEC Fund For International Development | 1,158,078 | | | 1,158,078 |
| Other | 14,304 | | | 14,304 |
| Qatar Red Crescent | 59,400 | | | 59,400 |
| Romanian Red Cross | 58,857 | | | 58,857 |
| Royal & Sun Alliance | 12,714 | | | 12,714 |
| Russia - Private Donors | 2,686 | | | 2,686 |
| Singapore - Private Donors | 9,975 | | | 9,975 |

International Federation of Red Cross and Red Crescent Societies

MDRCN003 - China - Sichuan Earthquake

Interim Financial Report

| Selected Parameters | |
|---------------------|----------------|
| Reporting Timeframe | 2008/5-2010/3 |
| Budget Timeframe | 2008/5-2010/12 |
| Appeal | MDRCN003 |
| Budget | APPEAL |

All figures are in Swiss Francs (CHF)

| | | | | | |
|---|--------------------|------------------|--|------------------|--------------------|
| Singapore Red Cross | 114,048 | | | | 114,048 |
| Slovenia Government | | | | 161,500 | 161,500 |
| South Africa Government | | | | 193,050 | 193,050 |
| South Africa - Private Donors | 361 | | | | 361 |
| Spain - Private Donors | 1,985 | | | | 1,985 |
| Sri Lanka Red Cross | 3,250 | | | | 3,250 |
| Stavros Niarchos Foundation | | | | 260,000 | 260,000 |
| Swedish - Private Donors | 32 | | | | 32 |
| Swedish Red Cross | 165,481 | | | | 165,481 |
| Swedish Red Cross (from Swedish Government) | 342,400 | | | | 342,400 |
| Switzerland - Private Donors | 31,036 | | | | 31,036 |
| Thailand - Private Donors | 5,200 | | | | 5,200 |
| Total | 51,000 | | | | 51,000 |
| Turkish Red Crescent | 5,264 | | | | 5,264 |
| United Arab Emirates - Private Donors | 1,115 | | | | 1,115 |
| United Arab Emirates Red Crescent | 20,981 | | | | 20,981 |
| United States - Private Donors | 158,571 | | | | 158,571 |
| United Technologies | 262,500 | | | | 262,500 |
| United Technologies (from United States - Private Donors) | 5,250 | | | | 5,250 |
| UN Staff Council / UNOG | 13,631 | | | | 13,631 |
| VERF/WHO Voluntary Emergency Relief | 4,400 | | | | 4,400 |
| C1. Cash contributions | 105,941,543 | 7,282,033 | | 3,497,655 | 116,721,230 |
| Outstanding pledges (Revalued) | | | | | |
| American Red Cross | 15,420,610 | | | | 15,420,610 |
| British Red Cross | 1,724,032 | | | | 1,724,032 |
| C2. Outstanding pledges (Revalued) | 17,144,643 | | | | 17,144,643 |
| Inkind Goods & Transport | | | | | |
| Belgian Red Cross (Flanders) | 134,228 | | | | 134,228 |
| British Red Cross | 2,589,652 | | | | 2,589,652 |
| Canadian Government | 249,696 | | | | 249,696 |
| Canadian Red Cross | 2,247,991 | | | | 2,247,991 |
| Danish Red Cross | 1,395,009 | | | | 1,395,009 |
| Finnish Red Cross | 886,681 | | | | 886,681 |
| Germany Red Cross | 1,183,335 | | | | 1,183,335 |
| Japanese Red Cross | 3,217,992 | | | | 3,217,992 |
| Netherlands Red Cross | 3,662,744 | | | | 3,662,744 |
| Norwegian Red Cross | 1,889,444 | | | | 1,889,444 |
| Spanish Red Cross | 695,552 | | | | 695,552 |
| C4. Inkind Goods & Transport | 18,152,323 | | | | 18,152,323 |
| Inkind Personnel | | | | | |
| American Red Cross | 57,493 | | | 22,000 | 79,493 |
| Australian Red Cross | 57,200 | | | 22,000 | 79,200 |
| Canadian Red Cross | 24,640 | | | | 24,640 |
| Other | 26,107 | | | 17,600 | 43,707 |
| C5. Inkind Personnel | 165,440 | | | 61,600 | 227,040 |
| Other Income | | | | | |
| Miscellaneous Income | 1,024 | | | | 1,024 |
| Services | -92,071 | -1,498 | | -5,971 | -99,540 |
| C6. Other Income | -91,048 | -1,498 | | -5,971 | -98,517 |
| C. Total Income = SUM(C1..C6) | 141,312,901 | 7,280,535 | | 3,553,283 | 152,146,719 |
| D. Total Funding = B + C | 141,312,901 | 7,280,535 | | 3,553,283 | 152,146,719 |
| Appeal Coverage | 91% | 101% | | 89% | 91% |

International Federation of Red Cross and Red Crescent Societies

MDRCN003 - China - Sichuan Earthquake

Interim Financial Report

| Selected Parameters | |
|---------------------|----------------|
| Reporting Timeframe | 2008/5-2010/3 |
| Budget Timeframe | 2008/5-2010/12 |
| Appeal | MDRCN003 |
| Budget | APPEAL |

All figures are in Swiss Francs (CHF)

II. Balance of Funds

| | Disaster Management | Health and Social Services | National Society Development | Principles and Values | Coordination | TOTAL |
|---|---------------------|----------------------------|------------------------------|-----------------------|--------------|---------------------|
| B. Opening Balance | 0 | 0 | | | 0 | 0 |
| C. Income | 141,312,901 | 7,280,535 | | | 3,553,283 | 152,146,719 |
| E. Expenditure | -115,172,674 | -277,140 | | | -725,543 | -116,175,356 |
| F. Closing Balance = (B + C + E) | 26,140,228 | 7,003,395 | | | 2,827,740 | 35,971,363 |

International Federation of Red Cross and Red Crescent Societies

MDRCN003 - China - Sichuan Earthquake

Interim Financial Report

| Selected Parameters | |
|---------------------|----------------|
| Reporting Timeframe | 2008/5-2010/3 |
| Budget Timeframe | 2008/5-2010/12 |
| Appeal | MDRCN003 |
| Budget | APPEAL |

All figures are in Swiss Francs (CHF)

III. Budget Analysis / Breakdown of Expenditure

| Account Groups | Budget | Expenditure | | | | | TOTAL | Variance |
|---|--------------------|---------------------|----------------------------|------------------------------|-----------------------|------------------|--------------------|--------------------|
| | | Disaster Management | Health and Social Services | National Society Development | Principles and Values | Coordination | | |
| A | | B | | | | | A - B | |
| BUDGET (C) | | 155,910,895 | 7,194,363 | | | 3,997,110 | 167,102,368 | |
| Supplies | | | | | | | | |
| Shelter - Relief | 24,610,307 | 23,527,757 | | | | | 23,527,757 | 1,082,550 |
| Shelter - Transitional | | 1,082,550 | | | | | 1,082,550 | -1,082,550 |
| Construction Materials | 81,841,090 | | | | | | | 81,841,090 |
| Clothing & textiles | 3,171,287 | 2,542,243 | | | | | 2,542,243 | 629,044 |
| Food | 3,500,000 | | | | | | | 3,500,000 |
| Water & Sanitation | 2,121,383 | 648 | | | | | 648 | 2,120,735 |
| Medical & First Aid | 845,424 | 7,355 | 6 | | | | 7,361 | 838,063 |
| Utensils & Tools | | 3,661 | | | | | 3,661 | -3,661 |
| Other Supplies & Services | 9,406,822 | 2,024,838 | | | | | 2,024,838 | 7,381,984 |
| ERU | | 3,429,933 | | | | | 3,429,933 | -3,429,933 |
| Total Supplies | 125,496,313 | 32,618,985 | 6 | | | | 32,618,991 | 92,877,321 |
| Land, vehicles & equipment | | | | | | | | |
| Land & Buildings | 2,550,000 | | | | | | | 2,550,000 |
| Vehicles | 260,750 | 141,634 | | | | | 141,634 | 119,116 |
| Computers & Telecom | 59,585 | 51,340 | | | | | 51,340 | 8,245 |
| Office/Household Furniture & Equipm. | 123,279 | 17,094 | | | | -173 | 16,921 | 106,358 |
| Others Machinery & Equipment | | 2,660 | | | | | 2,660 | -2,660 |
| Total Land, vehicles & equipment | 2,993,614 | 212,728 | | | | -173 | 212,555 | 2,781,059 |
| Transport & Storage | | | | | | | | |
| Storage | 28,775 | 40,919 | | | | | 40,919 | -12,144 |
| Distribution & Monitoring | 11,193,678 | 11,197,523 | | | | | 11,197,523 | -3,845 |
| Transport & Vehicle Costs | 1,054,089 | 70,264 | 2,306 | | 9,796 | | 82,365 | 971,724 |
| Total Transport & Storage | 12,276,542 | 11,308,705 | 2,306 | | 9,796 | | 11,320,807 | 955,735 |
| Personnel | | | | | | | | |
| International Staff | 4,354,407 | 1,229,679 | 152,369 | | 417,524 | | 1,799,572 | 2,554,836 |
| Regionally Deployed Staff | | 361 | | | 10,413 | | 10,775 | -10,775 |
| National Staff | 4,060,688 | 232,445 | 35,600 | | 53,307 | | 321,353 | 3,739,335 |
| National Society Staff | 1,620,736 | 8,109 | | | 2,039 | | 10,147 | 1,610,589 |
| Other Staff Benefits | | 5,763 | | | | | 5,763 | -5,763 |
| Consultants | 192,342 | 265,455 | | | 61 | | 265,516 | -73,174 |
| Total Personnel | 10,228,173 | 1,741,812 | 187,969 | | 483,345 | | 2,413,125 | 7,815,048 |
| Workshops & Training | | | | | | | | |
| Workshops & Training | 2,960,857 | 112,900 | 11,609 | | 27,939 | | 152,448 | 2,808,409 |
| Total Workshops & Training | 2,960,857 | 112,900 | 11,609 | | 27,939 | | 152,448 | 2,808,409 |
| General Expenditure | | | | | | | | |
| Travel | 511,703 | 161,402 | 11,447 | | 28,499 | | 201,348 | 310,356 |
| Information & Public Relation | 1,101,273 | 60,003 | 5,657 | | 22,266 | | 87,926 | 1,013,348 |
| Office Costs | 309,253 | 86,796 | 101 | | 14,044 | | 100,941 | 208,311 |
| Communications | 190,362 | 23,633 | 253 | | 6,982 | | 30,868 | 159,494 |
| Professional Fees | 100,032 | 103,242 | | | 536 | | 103,779 | -3,747 |
| Financial Charges | 5,000 | 52,369 | 19 | | 83,956 | | 136,344 | -131,344 |
| Other General Expenses | 78,409 | 6,967 | | | 1,880 | | 8,848 | 69,561 |
| Total General Expenditure | 2,296,032 | 494,412 | 17,477 | | 158,164 | | 670,053 | 1,625,979 |
| Contributions & Transfers | | | | | | | | |
| Cash Transfers National Societies | | 60,580,738 | 39,997 | | | | 60,620,735 | -60,620,735 |
| Total Contributions & Transfers | | 60,580,738 | 39,997 | | | | 60,620,735 | -60,620,735 |
| Programme Support | | | | | | | | |
| Program Support | 10,850,837 | 7,600,953 | 17,776 | | 41,397 | | 7,660,127 | 3,190,711 |
| Total Programme Support | 10,850,837 | 7,600,953 | 17,776 | | 41,397 | | 7,660,127 | 3,190,711 |
| Services | | | | | | | | |

International Federation of Red Cross and Red Crescent Societies

MDRCN003 - China - Sichuan Earthquake

Interim Financial Report

| Selected Parameters | |
|---------------------|----------------|
| Reporting Timeframe | 2008/5-2010/3 |
| Budget Timeframe | 2008/5-2010/12 |
| Appeal | MDRCN003 |
| Budget | APPEAL |

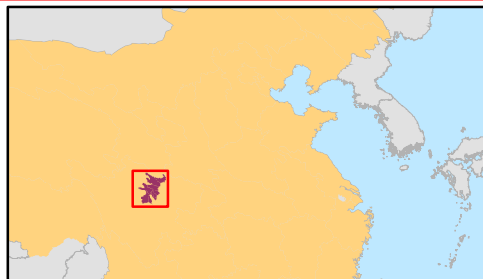
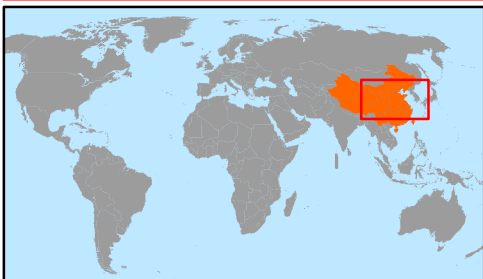
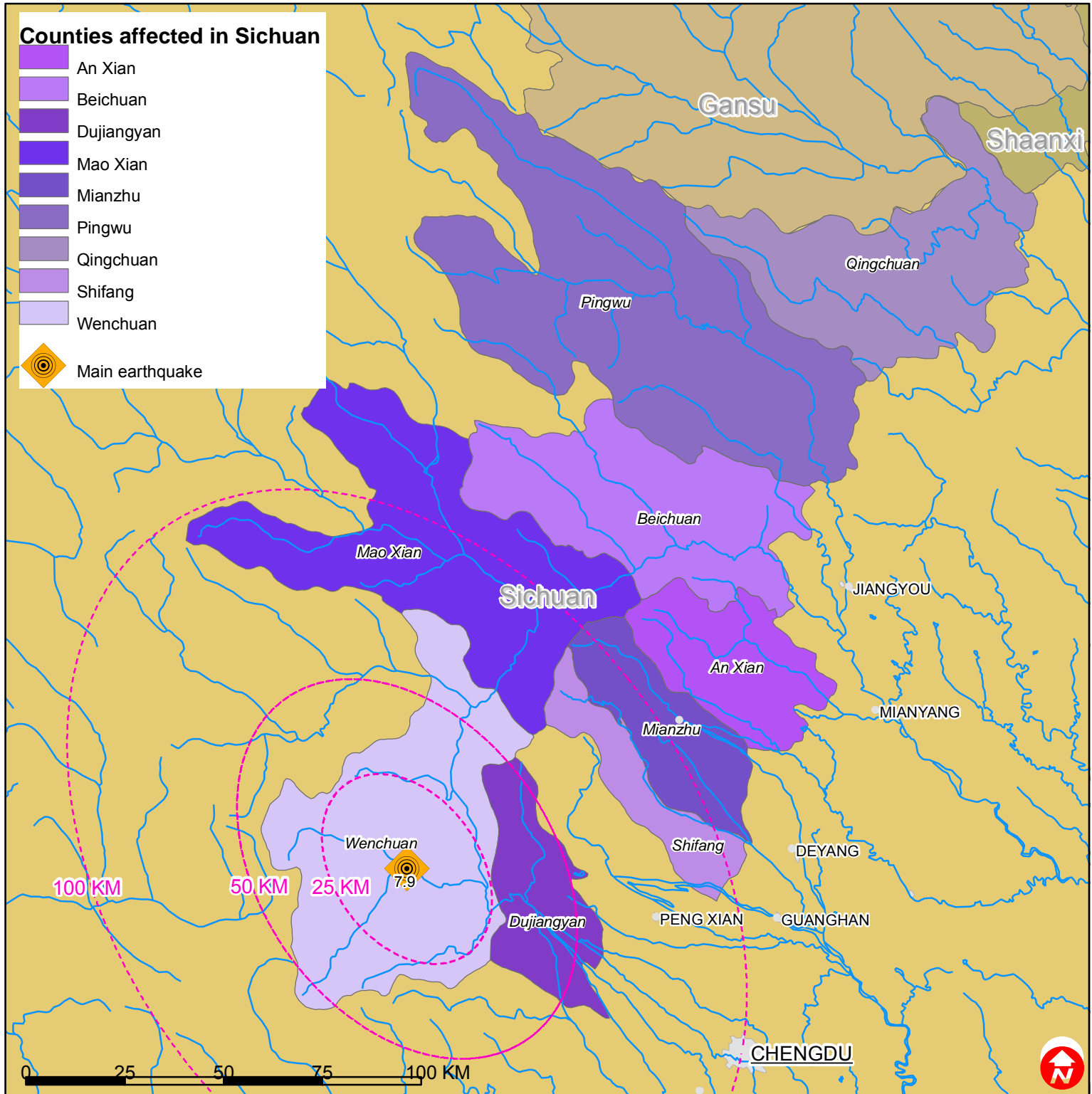
All figures are in Swiss Francs (CHF)

III. Budget Analysis / Breakdown of Expenditure

| Account Groups | Budget | Expenditure | | | | | TOTAL | Variance |
|-------------------------------------|--------------------|---------------------|----------------------------|------------------------------|-----------------------|------------------|--------------------|-------------------|
| | | Disaster Management | Health and Social Services | National Society Development | Principles and Values | Coordination | | |
| A | | | | | | | B | A - B |
| BUDGET (C) | | 155,910,895 | 7,194,363 | | | 3,997,110 | 167,102,368 | |
| Services & Recoveries | | 500,691 | | | | | 500,691 | -500,691 |
| Shared Services | 0 | 750 | | | | 3,150 | 3,900 | -3,900 |
| Total Services | 0 | 501,441 | | | | 3,150 | 504,591 | -504,591 |
| Operational Provisions | | | | | | | | |
| Operational Provisions | | | | | | 1,925 | 1,925 | -1,925 |
| Total Operational Provisions | | | | | | 1,925 | 1,925 | -1,925 |
| TOTAL EXPENDITURE (D) | 167,102,368 | 115,172,674 | 277,140 | | | 725,543 | 116,175,356 | 50,927,012 |
| VARIANCE (C - D) | | 40,738,222 | 6,917,224 | | | 3,271,566 | 50,927,012 | |



China: Earthquake



The maps used do not imply the expression of any opinion on the part of the International Federation of the Red Cross and Red Crescent Societies or National Societies concerning the legal status of a territory or of its authorities.

Map data sources: ESRI, DEVINFO, GIST, CIESIN, International Federation - MDRCN003EAREV.mxd