

Operations update



International Federation
of Red Cross and Red Crescent Societies

China: Sichuan Earthquake

Emergency appeal n° MDRCN003
GLIDE n° [EQ-2008-000062-CHN](#)
Operations update n° 19
11 February 2009

Period covered by this update: 1 December 2008-30 January 2009

Appeal target (current): CHF 167,102,368 (USD 137.7 million or EUR 110 million),

<click [here](#) to view the attached revised emergency appeal budget>

Appeal coverage: With contributions received to date, in cash and kind, and those in the pipeline, the appeal is currently approximately 65 per cent covered.

<click [here](#) for interim financial report or [here](#) for contact details>

Appeal history:

- A revised emergency appeal was launched on 20 November 2008 for 167.1 million (USD 137.7 million or EUR 110 million) to assist 200,000 families (up to 1,000,000 people) for 31 months.
- An emergency appeal was launched on 30 May 2008 for CHF 96.7 million (USD 92.7 million or EUR 59.5 million) in response to the huge humanitarian needs and in recognition of the unique position of the Red Cross Society of China (RCSC) supported by Red Cross Red Crescent partners to deliver high quality disaster response and recovery programmes.
- A preliminary emergency appeal of CHF 20.1 million (USD 19.3 million and EUR 12.4 million) was issued on 15 May 2008 to support the RCSC to assist around 100,000 people affected by the earthquake for 12 months.
- CHF 250,000 (USD 240,223 or EUR 155,160) was allocated from the International Federation's Disaster Relief Emergency Fund (DREF) on 12 May 2008, to support the RCSC to immediately start assessments of the affected areas and distribute relief items.



Lanterns ushering in the Chinese Lunar New Year of the Ox, which begins on 26 January, are hung at a temporary housing area for those who lost their homes in the 12 May earthquake in Mianzhu, Sichuan province. Xinhua

Summary:

Although the largest part of the International Federation's recovery programme is made up of shelter reconstruction in support of RCSC's recovery programme, the International Federation believes that rebuilding houses alone is insufficient in getting communities back to their regular lives. It is about rebuilding communities and more importantly, about rebuilding back better. The rebuilding back better philosophy encompasses a spectrum of initiatives to improve the communities' well being in a holistic way such as rebuilding houses that are earthquake resistant, providing health care services that includes psychosocial support care to aid in physical, mental and emotional healing, disaster preparedness and risk reduction interventions that empower the communities' capacity to be prepared for future emergencies, and livelihood interventions that assist

communities regain and sustain their livelihoods.

The Red Cross Society of China and International Federation-supported programmes continue to make progress though many activities had slowed down due to the peak holiday season in December and January. RCSC technical counterparts who will be working closely with the International Federation's technical teams have been identified. A memorandum of understanding (MoU) between RCSC headquarters, provincial and county branches, the International Federation and the prefecture government is also at the last stage of review and will be signed by February.

As the full effects of the economic crisis are beginning to be felt in the earthquake affected areas, people are looking for additional support from the government. Many family members that had been working as migrant labour in other parts of the country have lost their jobs and have to return home to the earthquake area. In addition to needing to find new work in an area still recovering from the devastating affects of the May 12 earthquake, the family members that worked in other parts of China provided an important source of cash to help their families back home rebuild their homes. In the days leading up to the Lunar New Year, the local government in Deyang came under growing pressure from township leadership in areas where the Red Cross was not implementing projects to expand Red Cross support to cover all townships. To allow time to investigate the requests and to consult with local township authorities, the Deyang government temporarily suspended the implementation of all Red Cross projects in the area. This affected all Red Cross partners working in the area but primarily the International Federation supported projects and projects supported by Hong Kong branch of the RCSC. Negotiations between the local government and RCSC, International Federation and the Hong Kong branch of the RCSC will continue after the Lunar New Year in February. Until then, projects such as unconditional cash grants and rubble removal cash-for-work are temporarily suspended.

Upon the invitation of the RCSC, the International Federation's Secretary-General, accompanied by the head of the Asia Pacific zone office will be visiting China in mid-February. His visit is aimed to reinforce the good cooperation between the International Federation and RCSC. Apart from Beijing, he will also visit the earthquake affected areas in Sichuan.

Many partner national societies have already made contributions to the appeal: American Red Cross, Australian Red Cross/Australian government, Belgian Red Cross/ Belgian government, British Red Cross, Bulgarian Red Cross, Canadian Red Cross/Canadian government, Cook Islands Red Cross, Croatian Red Cross, Czech Red Cross, Danish Red Cross/Danish government, Estonian Red Cross, Finnish Red Cross/Finnish government, German Red Cross, Icelandic Red Cross/Icelandic government, Indian Red Cross, Iran Red Crescent, Irish Red Cross/ Irish government, Japanese Red Cross/Japanese government, Lithuanian Red Cross, Malaysian Red Crescent, Mauritius Red Crescent, Monaco Red Cross, Netherlands Red Cross/Netherlands government, New Zealand Red Cross/New Zealand government, Norwegian Red Cross/Norwegian government, Qatar Red Crescent, Singapore Red Cross, Spanish Red Cross, Swedish Red Cross/ Swedish government, Sri Lanka Red Cross, Turkish Red Crescent and United Arab Emirates Red Crescent Society, as well as contributions from American, Greek, Italian, Luxembourg, Slovenian and South Africa governments, OPEC Fund for International Development, the Stavros Niarchos Foundation and many corporate partners.

The Red Cross Society of China has also received many bi-lateral contributions of funding, including the following: Canadian Red Cross, Cambodian Red Cross, French Red Cross, German Red Cross, Japanese Red Cross, Republic of Korea Red Cross, Norwegian Red Cross, Pakistan Red Crescent, Singapore Red Cross, Spanish Red Cross, Swiss Red Cross, Thai Red Cross, Turkish Red Crescent and Viet Nam Red Cross. These contributions have been added to the various substantial resources raised domestically by the Red Cross Society of China in its national fundraising appeal.

The appeal totalling 167.1 million is 65 per cent covered, with cash and in-kind contributions totalling CHF 109 million received. Total expenditure from May until the end of January 2009 is CHF 49.9 million¹.

The International Federation, on behalf of the Red Cross Society of China, would like to thank all partners for their very quick and generous response to this appeal.

[<click here to view the revised emergency and recovery appeal budget>](#), [<presented by sector>](#)

[<click here to view the interim financial report>](#)

[<click here to view a map of the affected areas>](#)

[<click here to view contact details>](#)

¹ Please note that the interim financial report attached reflects income and expenditure up to 31 December 2008 only. For the latest information on contributions, click [here](#) for the latest donors' response list.

Background

An 8.0 magnitude earthquake devastated Wenchuan and the surrounding areas of Sichuan, Gansu and Shaanxi provinces in western China on 12 May. Today, the official count stands at over 69,200 dead², 375,000 injured, over 18,000 missing and 15 million displaced. Reconstruction is the main priority in the earthquake affected areas especially in Sichuan, the most severely affected province.

The situation

As China now prepares to usher in the Year of the Ox, the country is bracing itself to face one of its toughest years. Economic growth plunged to 6.8 per cent in the fourth quarter of last year and analysts forecasts for this year's growth to as low as five per cent. The economic slowdown is putting severe pressure on the agriculture and rural economy.

Thousands of factories have been shut down due to the falling global demand for Chinese-made products and many more businesses have also had to close. Increasing job losses have led to around 20 million migrant workers, or 15.4 per cent of the mainland's 130 million migrant workers, being forced to return to the countryside. Officials predict more job losses and estimate the number to reach 25 million this year.



A schoolgirl relating a story through the eyes of Qiu Qiu the panda as part of the International Federation's psychosocial support programme which was tested during a trial run at a school in Shifang, Deyang. Jeyathesen Kulasingam/International Federation.

Migrant workers have been the hardest hit by the current financial crisis and the countryside has borne the brunt of its impact, and authorities will be considering ways to ease their plight with economic stimulus measures. The State Council recently issued its first policy document for the year, which addresses a wide range of rural issues, and is pinning its hopes on development in the countryside where many residents have come to rely on money from migrant workers working in factories and urban construction sites.

The country is also plagued by the worst drought to hit the northern part of China in half a century. Nearly four months without rain has affected more than 140 million *mu* (9.3 million hectares) of wheat farms in Henan, Anhui, Shandong, Shanxi, Gansu and Shaanxi, the country's six major grain-producing provinces. The current dry spell has gripped key agricultural regions threatening the supply of water to millions of people and putting winter harvest at risk. This has added to the woes of the nation's rural economy, which has been affected by falling commodity prices amid the global downturn.

Almost nine months after the devastating earthquake, the region is beginning to pull itself together. While the country moves ahead in its recovery efforts in the earthquake affected provinces, millions of families displaced by the May 12 earthquake are still without proper homes. Given the unprecedented scale of the disaster, the reconstruction and recovery needs are enormous with over 5.2 million houses needing construction in the affected areas. Even though the price of fuel, steel and certain building materials have decreased substantially, a majority of people are still unable to rebuild their homes due to a lack of funds to begin construction work. The slowdown in the economy is also exacerbating conditions for those thousands of families still living in transitional shelters and tents under difficult conditions, and a sense of resentment is starting to build at the slow pace of permanent house construction, the shortage of jobs and the lack of a timetable for getting their lives back to normal. Labour unrest has been reported in

² No official statement by the government has yet been declared on the status of the 18,500 missing people. However, some media reports quote a death toll of over 80,000 people.

several areas and demonstrations are expected to rise as unemployment worsens. The urgency is to rebuild homes and revive livelihoods.

One of the reasons reconstruction efforts have been held up is the continued threat of aftershocks, some of which have been strong quakes in their own right. The most recent measuring 5 on the Richter scale, occurred on 5 January. Infrastructure projects for schools and health facilities take precedence over homes which mean many villages remain in a state of disrepair, with most reconstruction projects still on the drawing board. After the disaster, the central government twinned a number of quake damaged counties and cities with richer provinces and municipalities. These provinces and municipalities were to provide resources to help rebuild infrastructure such as roads, schools, government offices, irrigation channels etc. damaged by the earthquake. However, as the economy slows down, lower budgets allocated to these provinces means the earthquake affected areas receive less assistance as well.

Red Cross and Red Crescent action

Overview

The International Federation's is supporting the RCSC in the area of recovery with focus on the reconstruction of family homes in three, possibly four, townships of Mianzhu county in Deyang Prefecture.

The RCSC and International Federation will provide reconstruction support for all family houses that need reconstruction within the three townships of Jiulong (4,728 homes), Banqiao (5,346 homes) and Zundao (7,466 homes) which totals 17,540 village homes. If adequate funding becomes available, the fourth township in Mianzhu county, Xinglong township (5,000 homes), will also be covered.

The International Federation's support to the RCSC will include technical and financial support along with a comprehensive coordination and management system to provide a holistic approach throughout all programming areas. It also aims to meet identified financial needs of the beneficiaries to support them in the reconstruction of their homes through relevant livelihoods programming.

Supplementing the Red Cross' family house reconstruction support are community-based programmes that are incorporated in an integrated approach towards bringing health and psychosocial care, water and sanitation, livelihoods and disaster preparedness measures to the same communities where family homes are being reconstructed. [Click here for the detailed recovery plan as stated in the revised appeal.](#)

In order to provide a holistic approach to enable sustainability and longer-term impact, integrated community-based health, water and sanitation, disaster risk reduction and livelihoods programmes are aligned with reconstruction activities.

The following section reports on the objectives and expected results of the recovery phase as outlined in the revised appeal of the International Federation's support to RCSC's reconstruction and recovery plans. With the exception of the remaining food parcels which are in the process of being procured, all of the International Federation's relief activities have been successfully completed. [Click here for the six-month consolidated report for information on the relief phase.](#)

Recovery

Shelter reconstruction

Shelter reconstruction	
Objective 1: (Recovery Phase: 7 to 31 months): To support 22,540 ³ households of the most vulnerable earthquake-affected families in Jiulong, Zundao, Banqiao and possibly Xinglong Townships of Mianzhu County to reconstruct their homes using the "owner-driven" reconstruction model.	
Expected results	Activities Planned
Homeowners and local authorities receive necessary technical support to build earthquake-	<ul style="list-style-type: none"> • Homeowners receive technical advice and support via village level trainings and at the household level • Existing architectural plans are reviewed for compliance with

³ Previous reports and the draft shelter programme still address 17,540 households in three townships. As requested by the government of China, the International Federation has included a fourth township with another 5,000 households under this programme with the understanding that sufficient funding is available.

resistant homes	<p>earthquake-resistant guidelines</p> <ul style="list-style-type: none"> • Architectural plans for smaller homes are provided (if needed) • Existing standard construction contracts are reviewed and upgraded to provide protective measures for homeowners • Construction skills training provided to villagers, artisans/builders (if needed)
<p>Expected results</p> <p>Supplementary monitoring and quality control that reinforces and complements the government of China's monitoring and quality control to support homeowners and contractors to build earthquake resistant homes</p>	<p>Activities Planned</p> <ul style="list-style-type: none"> • Beneficiary and monitoring database developed • MoU and project agreements signed with local authorities and homeowners • Technical officers, supervisors and engineers hired and trained • Main office at prefecture level and sub-offices in townships set-up • Supplementary monitoring and quality control systems put in place • Homes that are already under construction are reviewed for compliance with earthquake resistant guidelines
<p>Expected results</p> <p>Homeowners receive necessary financial support to build earthquake-resistant homes</p>	<p>Activities Planned</p> <ul style="list-style-type: none"> • Homeowners receive support to remove rubble and foundations (via livelihoods) • Cash grants are provided to homeowners at three stages⁴ in the building process (foundation, walls, roof) that meet earthquake resistant guidelines
<p>Expected results</p> <p>Homeowners have the necessary information and knowledge to build earthquake-resistant homes</p>	<p>Activities Planned</p> <ul style="list-style-type: none"> • Village level information dissemination meetings held and door to door visits conducted • Informational materials on policies, guidelines and regulations are developed • Information on construction contracts developed • Other materials and trainings designed to inform and empower homeowners to monitor and control the construction of their homes

Progress: In the past two months, progress has been made in the recruitment of the construction delegates and the shelter and reconstruction coordinator. One construction delegate has been recruited and will arrive in mid-February, while two other construction delegates have been shortlisted and expected to arrive in early March. The shelter and reconstruction coordinator, who has extensive experience in homeowner driven construction in China has also been hired. The full construction team, to be based in Deyang to be closer to the respective townships under the reconstruction programme, will be in place by March. A Chengdu support office will be set up within the premises of the Deyang city RCSC branch and recruitment of staff and technical persons for the construction team has started.

The shelter and reconstruction coordinator is responsible for the overall management of the construction programme and will work closely with senior management and with RCSC, collaborate with other Movement partners, local authorities and affected communities to ensure the timely delivery of International Federation and RCSC housing reconstruction support. He will also work closely with technical counterparts from RCSC to provide overall supervision of the programme, maintain financial oversight, supervise the construction monitoring team, coordinate with local authorities and provide additional monitoring and technical advice to homeowners.

A township office will also be set up in each of the townships of Jiulong, Zundao and Banqiao. The construction delegates will make up the construction monitoring team along with 95 other construction and quality engineers, and technical and office assistants. The monitoring teams will be operating out of these three township offices and report to the management team in Deyang city. Construction delegates will work side-by-side with their RCSC counterparts to supervise the shelter team, provide training to technical officers and villagers, develop educational materials, coordinate with local authorities and provide additional monitoring and technical advice to housing projects.

An interactive database that was being developed by International Federation has now been nearly completed. The database is crucial in monitoring the progress of reconstruction as the International Federation's construction support consists of a cash grant of CNY 20,000 to be allocated in three installments, in correlation with the

⁴ Stages have now been reduced to three instead of four as mentioned in previous reports.

foundation, walls and roof as they are completed and found to be earthquake resistant quality and design respectively. The database includes beneficiary information and is able to generate monitoring forms for beneficiaries at each stage of the monitoring process. Monitors will capture monitoring information to track 1) if beneficiaries are building houses according to earthquake resistant guidelines and 2) if beneficiaries qualify to receive the next instalment of the cash grant.

Beneficiaries for International Federation housing reconstruction support are selected according to three criteria; 1) home was fully destroyed or destroyed beyond repair by the earthquake; 2) family unable to self-finance reconstruction of home; and 3) family agree to rebuild home according to the government’s rules and regulations for earthquake-resistant houses. Integral to the construction process are beneficiary lists indicating all households eligible to receive Red Cross assistance. The list is drawn up by the village committee and after being signed and stamped by the village authorities, township authorities and the county-level RCSC, it is later cross-referenced to the list of families receiving reconstruction assistance from the government for verification. Once beneficiary lists are verified as meeting shelter construction criteria, it will be checked through home visits (a sample of 5-10 per cent) before being entered into the International Federation’s interactive database. The list generated by the database will be stamped by the International Federation, county-level RCSC branches, and the township and local governments. This list will finally be posted at the village level for a week and if no further questions, appeals or complaints are made, the list will be considered final.

The [beneficiary list for the township of Zundao](#) has been provided by the local government and the International Federation will be verifying it shortly. Beneficiary lists for Jiulong and Banqiao are compiled but need additional information. They will be finalized shortly.

A memorandum of understanding between the International Federation and the RCSC headquarters, RCSC provincial and prefecture branches, and the prefecture government has been drawn up and is in the last stages of review. The MoU clarifies the roles and responsibilities, expectations and commitment by each party undertaking the International Federation’s support in reconstruction and community-based programming.

Homeowner project agreements between county level RCSC branches and households receiving International Federation cash support are being finalized. These agreements will clearly explain the expectations and requirements to participate in the programme. Homeowners will be required to sign homeowner agreements before they can participate in the reconstruction programme.

The International Federation is also in collaboration with Build Change, an international NGO that designs and trains builders and villagers to build earthquake-resistant houses in developing countries. The International Federation and Build Change plan to work together by providing technical resources on the design and construction techniques of earthquake-resistant. These resources are in the process of being developed and are targeted towards two primary groups, 1) homeowners with little or no construction experience, and 2) technical personnel such as engineers, architects, technical staff and government officials. The International Federation and Build Change are working together to gain the support from relevant government ministries and academic institutions.

Resources on house construction will also need to adhere to either one or a combination of the national standard of the China government’s structural design codes listed below which are applicable for the construction or reconstruction of houses.

- Code for Design of Masonry Buildings
- Code for Design of Concrete Buildings
- Code for Structural Load Norms
- Code for Seismic Design of Buildings
- Code for Seismic Fortification Classification and Criteria

Challenges: Beneficiary lists provided by the government contained several errors and had to be sent back for clarification. Additionally, the programme’s implementation also slowed down in anticipation of the Lunar New Year holidays but will pick up again in February.

Health and care, and psychosocial support

I. Health and Care	
Objective 1 (Recovery Phase: 7 to 31 months): To reduce the vulnerability of the earthquake-affected population to public health risks through a community-based health (CBH) approach.	
Expected results	Activities Planned

There is significantly increased knowledge how to prevent and manage public health risks among earthquake affected communities	<ul style="list-style-type: none"> • Integrated baseline and knowledge, attitude and practice (KAP) survey completed • Village health volunteers have attended community-based health training courses and conducted regular household visits in targeted communities • 70 per cent of the targeted communities have functional village health committees
<p>Expected results</p> <p>The knowledge and capacity of RCSC board members, staff and volunteers to coordinate, manage and implement programmes is significantly strengthened</p>	<p>Activities Planned</p> <ul style="list-style-type: none"> • Orientation session and road show of programmes to all stakeholders • RCSC induction courses are provided to all new volunteers • Training of trainers for volunteers on community-based health • Monthly meetings for the RCSC staff, volunteers and board members • First aid training for volunteers • Develop necessary information, education and communication materials on psychosocial support programme and community-based health

II. Psychosocial Support	
Objective 1 (Recovery Phase: 7 to 31 months): Improve the psychological resilience of the earthquake affected population.	
<p>Expected Results</p> <p>Earthquake-affected people are able to manage stress and overcome crisis in their communities, individually, and among their families</p>	<p>Activities Planned</p> <ul style="list-style-type: none"> • Integrated baseline survey and knowledge, attitude and practice (KAP) survey completed • Locally adapted information, education and communication (IEC) materials are developed and disseminated • Training of trainers conducted in close cooperation with schools • Care centres in village community centres and schools are established • Village health volunteers are trained in psychosocial support • Trained RCSC volunteers conduct household visits in the targeted communities • Establish peer support groups • Targeted schools are equipped with first aid kits • Teachers are trained in psychosocial first aid • Emergency and first aid preparedness of the targeted schools is improved (creating first aid posts, school emergency areas)

Progress:

Community-based health (CBH)

The International Federation's health team discussed details of the implementation of the community-based health and psychosocial support programme with RCSC branches to agree on the strategies, timeframe and development of the programme to suit the communities needs and to take into account the country's context such as the unique community structure and the significant role played by the Ministry of Health in community health.

Volunteer recruitment and management to ensure volunteer systems and procedures are in place when the programme begins was also discussed as volunteers are central to the programme's sustainability.

The community structure in China is clearly defined by natural and administrative villages. Decisions affecting the community such as land-relating farming issues or minor disputes are referred to the natural village committee and village head, all of whom are elected by the communities themselves.

The International Federation is working with the ministry of health by complementing their existing programmes with topics such as avian influenza, HIV/AIDS and first aid. Information, education and communication (IEC), materials for dissemination are also being developed. Participatory training with interesting materials to motivate and maintain the community's enthusiasm to disseminate knowledge and awareness to households in their villages will be a major criterion in the development of these materials. Developing the programme with government agencies will strengthen effective partnerships with other agencies in the health field, while effective coordination with other organizations who are working in the health field avoids the duplication of projects in the same locations.

As community structures exist and communities have prior exposure to the ministry of health's programmes, communities will be much more open to the International Federation's community-based health programme. Selecting resources and promoting volunteer development to ensure the sustainability of the programmes will also be less complicated.

The elderly and severely injured

The International Federation's health team continues to coordinate with RCSC, various government and non-government agencies to share information and coordinate care for vulnerable marginalised communities such as the elderly and the severely injured. These communities have been mapped out in the three townships where the International Federation is focusing its activities in.

Based on joint assessments, the International Federation together with Handicap International will begin implementing a community-based rehabilitation programme for the families of those severely injured in April. Community-based rehabilitation is designed to enable health staff or care givers of those severely injured to perform rehabilitation exercises at home once patients have been discharged from outpatient care. Most importantly, it also seeks to reduce the financial burden on the families who are using most of their financial resources for the reconstruction of their destroyed homes. Medical treatment is not a top priority for these families compared to rebuilding their homes or livelihood.

Through CBH, RCSC volunteers supported by the International Federation will be trained to provide home care support (medical, nursing assistance and companionship), to the elderly within the community; and to perform simple rehabilitation exercises under the guidance of Handicap International physiotherapists. Psychosocial support training will also be given to RCSC volunteers as these home visits is a form of psychosocial support as well.

International Federation is also involved in discussions with relevant parties to ensure that patients continue to receive medical treatment and financial support in the coming year. Additionally, technical reconstruction plans for the disabled are being integrated into the construction designs of houses. The household needing these special designs have been mapped out. Livelihood options for this vulnerable community and their families will also be planned.

Psychosocial support programme (PSP)

The psychosocial support programme for the handicap, and severely injured and their families have been rolled out with the design of a manual customised to assist paraplegics and amputees. The International Federation's PSP training will be included in CBR and incorporated as part of the inpatient's treatment at hospitals. Health station staff will be included in PSP training to enable them to train and provide continued psychosocial support for the recovering and rehabilitating patients.

The International Federation and RCSC have been busy providing support to schools and communities to overcome trauma through the promotion of a better understanding about the International Federation's psychosocial support programme.



In Shuangguan village, Zundao township, this 68-year-old resident who was made a widow and also lost her leg to the earthquake, is unable to afford medical and rehabilitation costs since free medical services were halted after 1 January 2009. Through coordination with other NGOs, the International Federation has helped her continue to receive medical care and rehabilitation. (Jeyathesen Kulasingam/International Federation.)



A boy who lost his leg to the earthquake plays ping pong with friends at a temporary prefabricated school. Many others like him will be able to improve their physical well-being if prosthesis and physical rehabilitation are available to them. (Francis Markus/ International Federation.)

School teachers from some of the township schools previously participated in the International Federation / RCSC PSP training where observation and detection methods, among other analytical techniques, were taught. These teachers are now implementing a PSP programme in their respective schools. The teachers' committee will refer school children observed as needing professional counseling to the Crisis Intervention Centre.

Activities conducive to the childrens' growth, motivational levels and expression of their inner feelings, such as the use of stories and cartoons, are also being encouraged at schools. Through this method, the International Federation health team is in the midst of developing a tool kit using role plays, puppets and a character identified by all Chinese, to be implemented at all grade levels at the schools in these three townships. Additional materials will also be adapted from those used by the Psychosocial Reference Centre.

While the panda is a symbol of China especially in Sichuan where it is commonly found, pandas were themselves survivors who were affected by the disaster. This method of second party story telling plays a useful role in allowing children to move forward with their personal narratives without having to revisit their pain and grief.

The first trial at the schools in Shifang demonstrated the therapeutic value of using story-telling as an effective healing technique. *A teacher from Mianzhu Hongda Secondary School who had participated in the session said "It was very effective and suitable for the children. The children responded very well and were very happy to be involved. At first they were a little hesitant but later they were very happy to participate".*

As part of the International Federation's PSP support, plans are being made to offer assistance in training psychosocial support volunteers and funding a dedicated psychosocial professional in the disaster area. This will form a part of the International Federation's integrated programming in support of the RCSC. As well as reconstructing more than 17,540 homes in three badly-affected townships in Sichuan, the focus will also be on health, livelihood support and community-based disaster prevention.

Challenges: After the earthquake, the injured were exempted from all medical costs associated with earthquake related injuries at government hospitals. However, as of 1 January 2009, the exemptions ceased and people have to start paying for medical treatment at government hospitals. This has been a major set back for those with severe injuries especially those needing regular follow up treatment or corrective surgery and amputees or those with spinal injuries who still require rehabilitation for their condition. A majority cannot afford the medical cost as all available funds are used by their families in the reconstruction of their family homes and the recovery of their livelihoods which is the top priority.

Water and sanitation, and hygiene promotion

Objective 1 (Recovery Phase: 7 to 31 months): To reduce vulnerability of earthquake-affected populations from water-borne diseases by improving access to safe water and sanitation facilities and empowering community based organizations on water governance.	
<p>Expected results</p> <p>Communities have improved access to water and sanitation facilities according to minimum Sphere standards in three townships of Mianzhu County</p>	<p>Activities Planned</p> <p>1. Construction of water and sanitation facilities:</p> <ul style="list-style-type: none"> • Consultation/information sessions at village level with local authorities, RCSC and water bureau • General agreement (memorandum or understanding) between the water bureau, village representatives, RCSC and the International Federation on water supply systems • Design completed for gravity fed water supply systems • Tendering for drilling contractors, sanitation materials and gravity-fed water supply system materials. • Boreholes' drilling • Delivery of materials for water systems rehabilitation • Gravity-fed water supply system construction • Selection of households for sanitation facilities construction • Training in construction of latrines • Delivery of materials latrines • Construction of latrines • Technical monitoring

Expected results	Activities Planned
<p>Communities and RCSC have skills and knowledge to identify problems and solutions involving water, sanitation and hygiene practice issues through participatory hygiene and sanitation transformation (PHAST)</p>	<ol style="list-style-type: none"> 1. Creation of community-based water and sanitation management structures in collaboration with local health authorities: <ul style="list-style-type: none"> • Baseline survey (knowledge, attitude and practice) • Election of water and sanitation committees • Dissemination campaign • Community meetings • Monitoring • PHAST activities integrated under community-based health programme 2. Development of RCSC and community water and sanitation knowledge and capacity <ul style="list-style-type: none"> • RCSC volunteers training on baseline survey (knowledge, attitude and practice) • Water committees and caretakers training • Village volunteers training in sanitation construction

Progress: The details of the water and sanitation plan of action was agreed between the International Federation, RCSC and the local water bureau and a project agreement is being drafted in order to commence with the detailed design component of the water supply systems. The water and sanitation delegate's mission ended in November and the water and sanitation delegate based at the zone office in Kuala Lumpur has been supporting during the interim period. The zone's water and sanitation visited in December to review the water and sanitation programme to discuss water and sanitation emergency response preparedness with the RCSC and debrief with the outgoing water and sanitation delegate. A replacement water and sanitation delegate has been recruited and will arrive in February.

Livelihoods

<p>Objective 1: (Early Recovery Phase 6 to 12 months): To provide vulnerable families with enough income/resources to survive winter and start reconstructing their houses.</p>	
<p>Expected results</p> <ul style="list-style-type: none"> • Up to 15,000 vulnerable families receive support to generate their income or resources • The vulnerable families start livelihoods activity and reconstruction of their houses by the spring of 2009 	<p>Activities planned</p> <ul style="list-style-type: none"> • Provide cash transfer programme training to the RCSC livelihoods volunteers • Provide vulnerable families support to remove the debris and the foundation • Provide unconditional cash grants to the most vulnerable families • Provide conditional cash grant to the vulnerable families to replace their livelihoods assets such as a livestock and livelihoods tools • Develop cash transfer policy for the RCSC
<p>(Reconstruction and Longer Term Recovery Phase: 13 to 31 months): Objective 2: Vulnerable families have means (both skills and resources), to rehabilitate their livelihoods Objective 3: Vulnerable families have sustainable livelihoods and develop their livelihoods strategy.</p>	
<p>Expected results</p> <ul style="list-style-type: none"> • The livelihoods needs and appropriate livelihoods interventions are developed by April 2009 • Up to 4,000 vulnerable people receive appropriate training to have a stable income source • The necessary livelihoods assets are replaced or rehabilitated • The vulnerable families will have at least one 	<p>Activities planned</p> <ul style="list-style-type: none"> • Provide assessment training to the RCSC volunteers • Conduct integrated vulnerabilities and capacities assessment (VCA) in the target community • Develop middle and long term livelihoods projects • Identify potential areas for middle and long term projects. • Rehabilitation of livelihoods assets such as the rehabilitation of an irrigation channel or farmland • Capacity building of the vulnerable people through trainings such as vocational (construction-related and non-construction-related) trainings and business trainings • Improve livelihoods environment in the area through creation of potential manufacturing units (such as concrete hollow blocks), collective manufacturing units and/or making market links between small and micro enterprises and traders • Capacity building of the community and/or community-based

<ul style="list-style-type: none"> stable income source The people develop sustainable livelihoods 	<ul style="list-style-type: none"> organizations Develop livelihoods contingency plan and include it in RCSC disaster contingency plans
--	---

Progress: A plan of action for the livelihoods programme was originally developed after rapid assessments were conducted in November and includes various options to improve the livelihoods of families most affected by the earthquake. Both the RCSC and the local authorities were keen to begin rolling out the project in order to provide immediate relief to those wanting to begin reconstruction but are unable to due mainly to a lack of funds.

Quick Impact Project

A five-day training for RCSC volunteers in Deyang was conducted by a consultant (with support of British Red Cross), hired by the International Federation for 30 RCSC Deyang branch volunteers from 7-11 January in Mianzhu county. The training was aimed at preparing volunteers to implement the International Federation’s livelihoods projects in the communities. These RCSC volunteers learned topics such as non-violent communication, the basic concepts of sustainable livelihoods and how to conduct monitoring and evaluation in addition to receiving Red Cross awareness dissemination. These are volunteers will be directly involved in the implementation of the livelihoods cash transfer programme in the affected areas.

A four-day cash transfer programme (CTP), training was also conducted for RCSC management and staff from headquarters, Sichuan, Gansu and Shaanxi provinces, and representatives from Taiwan Red Cross Organization and Hong Kong Red Cross branch from 13 to 16 January 2009.

The cash transfer training included project cycle management and demonstrated how conditional and unconditional cash transfers can be an effective option in responding to the needs of those affected by a disaster. Materials for the cash transfer workshop were designed by the British Red Cross, Oxfam UK and Save the Children UK, and used a special methodology focused on adult learning principles. This is the first time a CTP workshop was organised in China as the cash transfer concept has never been used by RCSC before.

Due to the predominant use of asbestos in many village homes, it was deemed that the presence of asbestos posed too much risk if rubble was cleared and removed by those without the proper equipment. Thus, the cash-for-work option was cancelled and the International Federation began searching for a contractor to remove the rubble instead.



RCSC staff, taking part in a role play, simulate an assessment with beneficiaries. This activity demonstrated the possible situations arising while conducting assessments for cash transfer programming interventions. Melisa Tan/ International Federation.

Longer-term projects

Plans and being made for a 10-day VCA training which will be conducted in Deyang for 100 RCSC volunteers in March. This training will equip RCSC volunteers with knowledge and skills to conduct assessments on communities within the three focused townships. These assessments endeavour to gain a deeper understanding of the damages caused by the earthquake and the capacity of the community in responding to the damages incurred, and to identify specific options such as vocational training and other cash transfer programme options which are effective in the longer-term.

Challenges: In the days leading up to the Lunar New Year, the local government in Deyang came under growing pressure from township leadership in areas where the Red Cross was not implementing projects to expand Red Cross support to cover all townships. To allow time to investigate the requests and to consult with local township authorities, the Deyang government temporarily suspended the implementation of all Red Cross projects in the area. This affected all Red Cross partners working in the area but primarily the Federation supported projects and projects supported by Hong Kong Red Cross. Negotiations between the local government and RCSC, International Federation and the Hong Kong Red Cross branch will continue after the Lunar New Year in February. Until then, projects such as unconditional cash grants and rubble removal are temporarily suspended.

Disaster management

Progress: The International Federation, the RCSC, Hong Kong Branch of the RCSC and Australian Red Cross have formed a community-based disaster preparedness (CBDP) working group to discuss RCSCs community-based disaster preparedness model and to share their experience in working on community-based disaster preparedness in the various provinces. The working group aims to standardize training for community-based disaster preparedness and to better coordinate community-based disaster preparedness interventions in the earthquake affected provinces and other areas.

The working group met on 14-15 January 2009 in Beijing and agreed to share CBDP related documents, materials and information with the aim of consolidating, upgrading and enriching CBDP training models, especially on management and village disaster committee training modules. It was decided that the Hong Kong Branch of the RCSC will take the lead in enriching the management module while the International Federation will develop the VDC training module, including early warning and contingency planning at village level.

The working group also agreed to broaden communication channels by including each other, where possible, in project reviews and other knowledge and practice exchanges. It also broached the idea of an expanded CBDP working group meeting every one or two years which will involve all RCSC branches with projects.

An updated framework based on the discussions will be written up shortly by Australian Red Cross. A training curriculum is to be developed by the end of March and a joint training on CBDP for Sichuan is also being discussed.

Objective 1 (Recovery Phase: 7 to 31 months): To reduce the vulnerability of the population in Sichuan Province in areas where village home reconstruction is taking place by improving community capacity to plan and implement appropriate risk reduction initiatives addressing their local hazards.	
Expected results	Activities Planned
<ul style="list-style-type: none"> The affected Red Cross branches develop their capacities in community-based disaster management in future. 	<ul style="list-style-type: none"> Identify their capacity and training needs to carry out community-based disaster preparedness Assure training modules address the specific needs of the communities Conduct training
Expected results	Activities Planned
<ul style="list-style-type: none"> The affected communities learn how to respond during earthquakes and other disasters 	<ul style="list-style-type: none"> Identify the likely disasters and the risks in the community, people's knowledge of disasters including earthquakes, and the needs of evacuation drills through the modified vulnerabilities and capacities assessment (VCA) Identify areas for evacuation and the local authorities appointing these areas as official evacuation areas Develop evacuation drills with the communities and the relevant authorities Conduct awareness education on the evacuation system in the community Practise evacuation drills in the communities, schools and hospitals
Objective 2 (Recovery Phase: 7 to 31 months): To reduce vulnerability of the population prior to the onset of natural disasters in affected areas of Gansu and Shaanxi provinces by improving community capacity to plan and implement appropriate risk reduction initiatives addressing their local hazards.	
Expected results	Activities Planned
Volunteers and staff of the RCSC in Gansu and Shaanxi can provide improved risk analysis, including assessment of local vulnerabilities and capacities for effective disaster risk reduction and mitigation measures	<ul style="list-style-type: none"> Establish criteria for village selection and identify target villages Agreements with local government for support to identified projects Conduct vulnerability and capacity assessment in selected communities Red Cross volunteers organised to formulate village community-based disaster preparedness (CBDP) committees
Expected results	
Targeted communities in Gansu and Shaanxi have capacity to monitor local disaster risks and use their risk analysis to develop the institutional	<ul style="list-style-type: none"> Train facilitators at prefecture and county level in general community-based disaster preparedness concept and project monitoring and evaluation Train Red Cross facilitators at county and village level in community mobilization, community-based disaster

disaster planning	<p>preparedness, and defining mitigation measures</p> <ul style="list-style-type: none"> • Community-based disaster preparedness committees conduct basic disaster awareness rising in villages • Develop or strengthen community early warning system • Develop disaster risk reduction information, education and communication materials for school, promote disaster resistant school buildings • CBDP committees conduct hazard/risk mapping and priority exercises • CBDP committees prepare a village risk reduction plan and contingency plan • Review village mitigation proposals and allocate grant support based on guidelines • Ensure proper technical quality assurance of physical mitigation measures • Mitigation plans are implemented in the villages • RCSC provincial branch staff conduct field trips to monitor and support the CBDP committees
Objective 3 (Recovery Phase: 7 to 31 months): RCSC builds their capacity to effectively and quickly respond to emergencies in the future	
<p>Expected results</p> <p>RCSC develops three disaster preparedness centres in the affected area</p>	<p>Activities Planned</p> <ul style="list-style-type: none"> • Location and purpose of disaster preparedness centres defined, including warehouses, ambulance and logistics services. • Three disaster preparedness centres constructed • Monitoring

Capacity building and organizational development

Capacity building activities during this period focused on livelihood capacity building.

III. Livelihoods	
Objective (Recovery Phase: 7 to 31 months): RCSC further develops its capacity to plan, implement, and monitor and evaluate the livelihoods projects.	
<p>Expected results</p> <ul style="list-style-type: none"> • RCSC develops its capacity in the area of cash transfer programming • RCSC develops its capacity to plan, implement, monitor and evaluate long-term livelihoods projects 	<p>Activities planned</p> <ul style="list-style-type: none"> • Provide cash transfer programming training to the RCSC • Provide general livelihoods training which includes livelihoods assessment, project design, project management and monitoring and evaluation, to the RCSC

Progress: The International Federation continues to work closely with the RCSC to build capacity at all levels in responding to disasters. Through technical support provided by the delegates in the field, RCSC technical counterparts and programme managers especially in the county and prefecture branches have been able to build their capacities and skills. The RCSC has also been able to recognize the potential of newly-introduced concepts such as cash transfer programming.

The setting up of International Federation township offices in Jiulong, Zundao and Banqiao, in addition to expanding and strengthening the RCSC Deyang branch, will also increase the communities' awareness on the Red Cross Movement and its work. In addition to the promotion of volunteer development through the International Federation's various community-based trainings and knowledge sharing activities, RCSC community-based volunteers in these townships will be able to use these hub-offices as a meeting place to conduct other Red Cross activities, thereby strengthening their own skills and capacities.

Coordination and partnerships

The International Federation continues to support the RCSC and play an important role in coordinating Red Cross Red Crescent Movement efforts in the earthquake operations. Upon the invitation of the RCSC, the Secretary-General of the International Federation and the head of the Asia Pacific zone office in Kuala Lumpur will be in visiting Beijing on 14-17 February and Sichuan province on 18-20 February. The vice-president of the RCSC and several senior management staff will also be accompanying the Secretary-General to Sichuan. The visit is to reinforce the good cooperation between the International Federation and the RCSC.

A third partnership meeting for support to the RCSC earthquake operations is planned for April. This will enable the RCSC, the International Federation and partners to summarize activities to date and follow up on priorities agreed upon in the last two meetings. These meetings are supplemented with frequent communications with both multilateral and bilateral partners.

The International Federation continues to coordinate with Handicap International to assist those with severe injuries and permanent disabilities. Close contact with several government agencies, such as the civil affairs department, handicap people's department, public health bureau, agricultural department is ongoing in developing a home care volunteer support system.

Collaboration between the International Federation and Build Change has been critical designing training modules for homeowners and for technical staff as well as developing IEC materials that will support the construction of homes according to nationally and internationally recognised seismic guidelines.

As part of the Cooperation Framework that has been finalised, the proposed advisory committee comprising members from RCSC, the International Federation and partner national societies is currently being developed to advise on major issues related to the implementation of the reconstruction programme and take into consideration interests of the RCSC and all partners.

Capacity of the Red Cross Society of China

The Red Cross Society of China was founded in 1904, becoming one of the first members of the International Federation in 1919. The mission of the RCSC is reflected in its law, acknowledged by the central and provincial governments, and is reflective of the good working relationship with the government, particularly in the fields of relief and health activities. Today with over 21 million members, a headquarters in Beijing (217 staff) and established provincial and municipality branches (5,959 staff) corresponding to state administrative units, the RCSC is well placed to act as a valuable auxiliary partner to the government in times of disaster.

In recent years, China has experienced many earthquakes, during which RCSC has conducted key relief activities. In addition, the RCSC has responded to massive disasters caused by typhoons, torrential rains and snow in the past few years. Through these experiences, the RCSC has improved its response mechanisms to deliver assistance to affected individuals. When disaster strikes, RCSC branches at the provincial and local levels immediately launch local appeals for funding and collect items such as warm clothing to assist those affected by disasters.

The RCSC maintains a nationwide network of six regional disaster preparedness centres. These are essentially warehouses with stocks of relief supplies, but they also serve as focal points for training staff in disaster management, including logistics, report writing skills and first aid, tailored to different kinds of disasters

Capacity of International Federation

The International Federation's East Asia regional office in Beijing is comprised of a head of office and specialist delegates in disaster management, health and care, planning, monitoring, evaluation and reporting, media and communications, finance and skilled local staff. The regional office is backed by a team of staff in the International Federation's Asia Pacific zone office in Kuala Lumpur, and relevant technical departments in Geneva.

The International Federation's operations support team in Chengdu, the capital of Sichuan province, provides support as necessary to the RCSC to implement the operation successfully. The International Federation will keep approximately 12 delegates and a team of local staff in Chengdu to support the considerable number of national society staff and volunteers in the implementation of the programmes. The team consists of a head of office, technical delegates in shelter reconstruction, health and psychosocial care, water and sanitation,

recovery/livelihoods, logistics, finance, and reporting. A strong team of local staff provides further support to the team and the local RCSC staff and volunteers.

The Chengdu office coordinates with the RCSC office in Sichuan, the local authorities and partner national society representatives to manage operation programme activities. The regional office in Beijing will continue to coordinate with the RCSC headquarters for Gansu and Shaanxi programming. Furthermore, the Beijing office will also continue to hold regular meetings with the RCSC senior management, and involve the advisory committee when appropriate. A focal point coordinating and holding the overall responsibility for the Federation-supported programmes will be appointed and posted in Beijing.

Communications – Advocacy and Public Information

International media focus on Red Cross Red Crescent operations in the earthquake zone has remained significant over the Christmas and New Year holiday season. Some media offered coverage in year-enders, such as on [CNN World Report](#).

Television stations such as RTL from the Netherlands and Swedish TV4 also filmed Red Cross Red Crescent activities such as psychosocial support and in some cases reported feedback from viewers keen to donate to communities such as those featured in the coverage.

US National Public Radio's (NPR) coverage from the quake zone also prompted listener queries online as to how members of the public could best help. The Shanghai-based NPR correspondent, who interviewed members of the International Federation team in Chengdu, responded by providing a link on the NPR website to the American Red Cross site.

The upcoming edition of the International Federation's Psychosocial Reference Centre magazine, *Coping with Crisis*, will feature an article by the regional communications delegate from Sichuan on continuing International Federation support for RCSC psychosocial support activities in schools.

How we work

All International Federation assistance seeks to adhere to the [Code of Conduct for the International Red Cross and Red Crescent Movement and Non-Governmental Organizations \(NGOs\) in Disaster Relief](#) and is committed to the [Humanitarian Charter and Minimum Standards in Disaster Response \(Sphere\)](#) in delivering assistance to the most vulnerable.

The International Federation's activities are aligned with its Global Agenda, which sets out four broad goals to meet the Federation's mission to "improve the lives of vulnerable people by mobilizing the power of humanity".

Global Agenda Goals:

- Reduce the numbers of deaths, injuries and impact from disasters.
- Reduce the number of deaths, illnesses and impact from diseases and public health emergencies.
- Increase local community, civil society and Red Cross Red Crescent capacity to address the most urgent situations of vulnerability.
- Reduce intolerance, discrimination and social exclusion and promote respect for diversity and human dignity.

Contact information

For further information specifically related to this operation please contact:

- Red Cross Society of China: Mr. Wang Xiaohua, director of external relations department; email: rcsc@chineseredcross.org; phone: +86.10.6404.8366, fax +86.10.6402.9928.
- East Asia regional office in China: Mr. Carl Naucler, head of regional office, mobile: +86 10 6532 7162, email: carl.naucler@ifrc.org; and Sheila Thornton, head of Chengdu office, mobile: +86 136 8849 7505, email: sheila.thornton@ifrc.org
- Federation zone office in Kuala Lumpur:
 - Alistair Henley, head of zone office, phone: +6012 203 8254, email: alistair.henley@ifrc.org,
 - Amy Gaver, head of disaster management unit, mobile: +6012 220 1174, email: amy.gaver@ifrc.org
 - Jeremy Francis, regional logistics coordinator, phone: +603 9207 5753, fax: +603 2168 8573 email: jeremy.francis@ifrc.org
 - For pledges of funding: Penny Elghady, resource mobilization and PMER coordinator phone: +603 9207 5775, email: penny.elghady@ifrc.org. Please send all funding pledges to zonerm.asiapacific@ifrc.org.
 - For media enquiries: Francis Markus (Chengdu), communications delegate, mobile: +86 1391 0096 892, email : francis.markus@ifrc.org; or Jason Smith (KL), zone communications manager, mobile: +6012 387 0829, email: jason.smith@ifrc.org

***<Annexes and interim financial report below;
click here to return to the title page>***

International Federation of Red Cross and Red Crescent Societies

MDRCN003 - China - Sichuan Earthquake

Interim Financial Report

Selected Parameters	
Reporting Timeframe	2008/5-2008/12
Budget Timeframe	2008/5-2010/12
Appeal	MDRCN003
Budget	APPEAL

All figures are in Swiss Francs (CHF)

I. Consolidated Response to Appeal

	Goal 1: Disaster Management	Goal 2: Health and Care	Goal 3: Capacity Building	Goal 4: Principles and Values	Coordination	TOTAL
A. Budget	167,102,368					167,102,368
B. Opening Balance	0					0
Income						
Cash contributions						
<i>American Government</i>	520,000					520,000
<i>American Red Cross</i>	10,432,547					10,432,547
<i>Australian Red Cross</i>	5,891,300					5,891,300
<i>Australian Red Cross (from Australian Government)</i>	995,500					995,500
<i>Austria - Private Donors</i>	485					485
<i>Belgium Red Cross (Flanders)</i>	93,682					93,682
<i>Belgium Red Cross (Flanders) (from Belgian Federal Government)</i>	36,523					36,523
<i>Brazil - Private Donors</i>	6,373					6,373
<i>British Red Cross</i>	2,850,396					2,850,396
<i>Bulgarian Red Cross</i>	5,000					5,000
<i>Cambodia - Private Donors</i>	170					170
<i>Canada - Private Donors</i>	5,200					5,200
<i>Canadian Red Cross</i>	5,359,079					5,359,079
<i>Canadian Red Cross (from Canadian Government)</i>	17,816,762					17,816,762
<i>China - Private Donors</i>	32					32
<i>Czech Red Cross</i>	10,202					10,202
<i>Danish Red Cross</i>	10,749					10,749
<i>Danish Red Cross (from Danish Government)</i>	670,030					670,030
<i>DELL Direct Giving Campaign</i>	89,867					89,867
<i>Estonia Red Cross</i>	4,035					4,035
<i>Finnish Red Cross</i>	57,319					57,319
<i>France - Private Donors</i>	2,668					2,668
<i>German Red Cross</i>	167,633					167,633
<i>Germany - Private Donors</i>	121					121
<i>Germany - Private Donors (from Switzerland - Private Donors)</i>	100					100
<i>Great Britain - Private Donors</i>	22,503					22,503
<i>Greek Government</i>	327,000					327,000
<i>IATA</i>	8,650					8,650
<i>Icelandic Red Cross (from Icelandic Government)</i>	109,646					109,646
<i>ICRC (from Unidentified donor)</i>	153					153
<i>Indian Red Cross</i>	27,409					27,409
<i>India - Private Donors</i>	5,040					5,040
<i>Indonesia - Private Donors</i>	2,209					2,209
<i>Infineum UK Ltd</i>	70,413					70,413
<i>Ireland - Private Donors</i>	1,256					1,256
<i>Irish Government</i>	1,627,000					1,627,000
<i>Irish Red Cross</i>	283,001					283,001
<i>Italian Govt Bilateral Emergency Fund</i>	1,612,150					1,612,150
<i>Japanese Government</i>	1,785,000					1,785,000
<i>Japanese Red Cross</i>	5,000,079					5,000,079
<i>Japan - Private Donors</i>	3,150					3,150
<i>Lithuanian Red Cross</i>	976					976
<i>Luxembourg Government</i>	104,900					104,900
<i>Malaysian Red Crescent</i>	10,546					10,546

International Federation of Red Cross and Red Crescent Societies

MDRCN003 - China - Sichuan Earthquake

Interim Financial Report

Selected Parameters	
Reporting Timeframe	2008/5-2008/12
Budget Timeframe	2008/5-2010/12
Appeal	MDRCN003
Budget	APPEAL

All figures are in Swiss Francs (CHF)

Malaysia - Private Donors	1,780			1,780
Mauritius Red Cross	191			191
Monaco Red Cross	114,914			114,914
Netherlands - Private Donors	8,335			8,335
Netherlands Red Cross	1,025,922			1,025,922
Netherlands Red Cross (from Netherlands Government)	813,500			813,500
New York Office (from Adams Street Partners)	3,000			3,000
New York Office (from Alcatel Lucent)	149,625			149,625
New York Office (from Applied Materials)	14,902			14,902
New York Office (from Bechtel Group Foundation)	57,698			57,698
New York Office (from Black Rock)	50,895			50,895
New York Office (from Citadel Investment group)	44,590			44,590
New York Office (from Codexis)	1,763			1,763
New York Office (from EMC Corp.)	76,342			76,342
New York Office (from Fibrogen)	10,413			10,413
New York Office (from Genzyme Corporation)	11,197			11,197
New York Office (from Heinz)	99,750			99,750
New York Office (from Hospira)	99,750			99,750
New York Office (from Huber)	49,875			49,875
New York Office (from Jones apparel Group)	21,804			21,804
New York Office (from Kraft Foods)	157,500			157,500
New York Office (from Mellon Bank)	25,447			25,447
New York Office (from Monsanto Foundation)	53,578			53,578
New York Office (from Motorola Foundation)	29,112			29,112
New York Office (from New York Life)	119,078			119,078
New York Office (from Otis LG Elevator Co)	6,786			6,786
New York Office (from Schering Plough)	27,844			27,844
New York Office (from THERMO FISCHER)	20,358			20,358
New York Office (from United States - Private Donors)	49,610			49,610
New York Office (from United Technologies)	237,021			237,021
New York Office (from Yahoo)	8,143			8,143
New Zealand Red Cross	235,893			235,893
New Zealand Red Cross (from New Zealand Government)	664,365			664,365
Nigeria private donors	1,024			1,024
Norwegian Red Cross	83,254			83,254
Norwegian Red Cross (from Norwegian Government)	377,252			377,252
Office of the Representative of the Dalai Lama	52,000			52,000
On Line donations	757,653			757,653
Qatar Red Crescent	59,400			59,400
Royal & Sun Alliance	12,714			12,714
Russia - Private Donors	2,686			2,686
Singapore - Private Donors	9,975			9,975
Singapore Red Cross	114,048			114,048
Slovenia Government	161,500			161,500
South Africa Government	193,050			193,050
South Africa - Private Donors	361			361
Spain - Private Donors	1,985			1,985
Sri Lanka Red Cross	3,250			3,250
Stavros Niarchos Foundation	260,000			260,000
Swedish - Private Donors	32			32
Swedish Red Cross (from Swedish Government)	342,400			342,400
Switzerland - Private Donors	27,486			27,486

International Federation of Red Cross and Red Crescent Societies

MDRCN003 - China - Sichuan Earthquake

Interim Financial Report

Selected Parameters	
Reporting Timeframe	2008/5-2008/12
Budget Timeframe	2008/5-2010/12
Appeal	MDRCN003
Budget	APPEAL

All figures are in Swiss Francs (CHF)

<i>Thailand - Private Donors</i>	5,200			5,200
<i>Total</i>	51,000			51,000
<i>Turkish Red Crescent</i>	5,264			5,264
<i>United Arab Emirates - Private Dono</i>	1,115			1,115
<i>United Arab Emirates Red Crescent</i>	20,981			20,981
<i>United States - Private Donors</i>	144,739			144,739
<i>United Technologies</i>	262,500			262,500
<i>United Technologies (from United States - Private Donors)</i>	5,250			5,250
<i>VERF/WHO Voluntary Emergency Relief</i>	4,400			4,400
C1. Cash contributions	63,278,352			63,278,352

Outstanding pledges (Revalued)

<i>Cook Islands Red Cross</i>	61			61
<i>Finnish Red Cross</i>	374,140			374,140
<i>Finnish Red Cross (from Finnish Government)</i>	718,348			718,348
<i>Irish Red Cross</i>	70,338			70,338
<i>Japanese Red Cross</i>	21,160,419			21,160,419
<i>New York Office (from Alcatel Lucent)</i>	7,911			7,911
<i>New York Office (from Applied Materials)</i>	772			772
<i>New York Office (from Bechtel Group Foundation)</i>	2,989			2,989
<i>New York Office (from Black Rock)</i>	2,637			2,637
<i>New York Office (from Citadel Investment group)</i>	2,310			2,310
<i>New York Office (from EMC Corp.)</i>	3,955			3,955
<i>New York Office (from Fibrogen)</i>	540			540
<i>New York Office (from Genzyme Corporation)</i>	580			580
<i>New York Office (from Heinz)</i>	5,274			5,274
<i>New York Office (from Hospira)</i>	5,274			5,274
<i>New York Office (from Huber)</i>	2,637			2,637
<i>New York Office (from Jones apparel Group)</i>	1,153			1,153
<i>New York Office (from Mellon Bank)</i>	1,318			1,318
<i>New York Office (from Monsanto Foundation)</i>	2,776			2,776
<i>New York Office (from Motorola Foundation)</i>	1,508			1,508
<i>New York Office (from New York Life)</i>	6,169			6,169
<i>New York Office (from Otis LG Elevator Co)</i>	352			352
<i>New York Office (from Schering Plough)</i>	1,443			1,443
<i>New York Office (from THERMO FISCHER)</i>	1,055			1,055
<i>New York Office (from United Technologies)</i>	12,280			12,280
<i>New York Office (from Yahoo)</i>	422			422
<i>New Zealand Red Cross</i>	140,750			140,750
<i>OPEC Fund For Int-l Development</i>	1,054,741			1,054,741
C2. Outstanding pledges (Revalued)	23,582,151			23,582,151

Inkind Goods & Transport

<i>Belgium Red Cross (Flanders)</i>	134,228			134,228
<i>British Red Cross</i>	2,589,652			2,589,652
<i>Canadian Government</i>	249,696			249,696
<i>Canadian Red Cross</i>	2,247,991			2,247,991
<i>Danish Red Cross</i>	1,395,009			1,395,009
<i>Finnish Red Cross</i>	886,681			886,681
<i>German Red Cross</i>	1,183,335			1,183,335
<i>Japanese Red Cross</i>	3,217,992			3,217,992
<i>Netherlands Red Cross</i>	3,662,744			3,662,744
<i>Norwegian Red Cross</i>	1,889,444			1,889,444
<i>Spanish Red Cross</i>	695,552			695,552
C3. Inkind Goods & Transport	18,152,323			18,152,323

Inkind Personnel

International Federation of Red Cross and Red Crescent Societies

MDRCN003 - China - Sichuan Earthquake

Interim Financial Report

Selected Parameters	
Reporting Timeframe	2008/5-2008/12
Budget Timeframe	2008/5-2010/12
Appeal	MDRCN003
Budget	APPEAL

All figures are in Swiss Francs (CHF)

<i>American Red Cross</i>	26,693				26,693
<i>Australian Red Cross</i>	26,400				26,400
<i>Canadian Red Cross</i>	17,307				17,307
C4. Inkind Personnel	70,400				70,400
Other Income					
<i>Miscellaneous Income</i>	868				868
<i>Services</i>	-93,411				-93,411
C5. Other Income	-92,543				-92,543
C. Total Income = SUM(C1..C5)	104,990,682				104,990,682
D. Total Funding = B + C	104,990,682				104,990,682
Appeal Coverage	63%				63%

II. Balance of Funds

	Goal 1: Disaster Management	Goal 2: Health and Care	Goal 3: Capacity Building	Goal 4: Principles and Values	Coordination	TOTAL
B. Opening Balance	0					0
C. Income	104,990,682					104,990,682
E. Expenditure	-49,889,516					-49,889,516
F. Closing Balance = (B + C + E)	55,101,166					55,101,166

International Federation of Red Cross and Red Crescent Societies

MDRCN003 - China - Sichuan Earthquake

Interim Financial Report

Selected Parameters	
Reporting Timeframe	2008/5-2008/12
Budget Timeframe	2008/5-2010/12
Appeal	MDRCN003
Budget	APPEAL

All figures are in Swiss Francs (CHF)

III. Budget Analysis / Breakdown of Expenditure

Account Groups	Budget	Expenditure					TOTAL	Variance
		Goal 1: Disaster Management	Goal 2: Health and Care	Goal 3: Capacity Building	Goal 4: Principles and Values	Coordination		
A		B					A - B	
BUDGET (C)	167,102,368						167,102,368	
Supplies								
Shelter - Relief	24,610,307	23,527,757				23,527,757	1,082,550	
Shelter - Transitional		1,082,550				1,082,550	-1,082,550	
Construction Materials	81,841,090						81,841,090	
Clothing & textiles	3,171,287	874,522				874,522	2,296,765	
Food	3,500,000						3,500,000	
Water & Sanitation	2,121,383	722				722	2,120,661	
Medical & First Aid	845,424	1,424				1,424	844,000	
Other Supplies & Services	9,406,822	2,024,838				2,024,838	7,381,984	
ERU		3,429,933				3,429,933	-3,429,933	
Total Supplies	125,496,313	30,941,746				30,941,746	94,554,567	
Land, vehicles & equipment								
Land & Buildings	2,550,000						2,550,000	
Vehicles	260,750						260,750	
Computers & Telecom	59,585	36,424				36,424	23,161	
Office/Household Furniture & Equipm.	123,279	6,915				6,915	116,364	
Total Land, vehicles & equipment	2,993,614	43,339				43,339	2,950,275	
Transport & Storage								
Storage	28,775	30,419				30,419	-1,644	
Distribution & Monitoring	11,193,678	11,196,958				11,196,958	-3,280	
Transport & Vehicle Costs	1,054,089	24,621				24,621	1,029,468	
Total Transport & Storage	12,276,542	11,251,997				11,251,997	1,024,544	
Personnel								
International Staff	4,354,407	348,666				348,666	4,005,741	
National Staff	4,060,688	52,772				52,772	4,007,916	
National Society Staff	1,620,736	6,477				6,477	1,614,259	
Consultants	192,342	72,861				72,861	119,481	
Total Personnel	10,228,173	480,776				480,776	9,747,397	
Workshops & Training								
Workshops & Training	2,960,857	14,356				14,356	2,946,501	
Total Workshops & Training	2,960,857	14,356				14,356	2,946,501	
General Expenditure								
Travel	511,703	107,265				107,265	404,438	
Information & Public Relation	1,101,273	18,044				18,044	1,083,229	
Office Costs	298,436	35,349				35,349	263,087	
Communications	190,362	14,727				14,727	175,635	
Professional Fees	100,032	100,222				100,222	-190	
Financial Charges	5,000	-44,966				-44,966	49,966	
Other General Expenses	78,409	3,167				3,167	75,242	
Total General Expenditure	2,285,216	233,809				233,809	2,051,407	
Contributions & Transfers								
Cash Transfers National Societies		3,529,795				3,529,795	-3,529,795	
Total Contributions & Transfers		3,529,795				3,529,795	-3,529,795	
Programme Support								
Program Support	10,861,654	2,889,535				2,889,535	7,972,119	
Total Programme Support	10,861,654	2,889,535				2,889,535	7,972,119	
Services								
Services & Recoveries		500,691				500,691	-500,691	
Total Services		500,691				500,691	-500,691	
Operational Provisions								

International Federation of Red Cross and Red Crescent Societies

MDRCN003 - China - Sichuan Earthquake

Interim Financial Report

Selected Parameters	
Reporting Timeframe	2008/5-2008/12
Budget Timeframe	2008/5-2010/12
Appeal	MDRCN003
Budget	APPEAL

All figures are in Swiss Francs (CHF)

III. Budget Analysis / Breakdown of Expenditure

Account Groups	Budget	Expenditure					TOTAL	Variance
		Goal 1: Disaster Management	Goal 2: Health and Care	Goal 3: Capacity Building	Goal 4: Principles and Values	Coordination		
A							B	A - B
BUDGET (C)		167,102,368					167,102,368	
Operational Provisions		3,471					3,471	-3,471
Total Operational Provisions		3,471					3,471	-3,471
TOTAL EXPENDITURE (D)	167,102,368	49,889,516					49,889,516	117,212,852
VARIANCE (C - D)		117,212,852					117,212,852	

REVISED APPEAL BUDGET SUMMARY

CHINA : SICHUAN EARTHQUAKE

MDRCN003

	ORIGINAL	REVISED	VARIANCE
<u>RELIEF NEEDS</u>			
Shelter (Tents)	28,000,000	24,610,307	-3,389,693
Construction Materials (Housing)	17,000,000	81,841,090	64,841,090
Clothing & Textiles	1,000,000	3,171,287	2,171,287
Food	5,000,000	3,500,000	-1,500,000
Water & Sanitation	120,000	2,121,383	2,001,383
Medical & First Aid	740,000	845,424	105,424
Teaching Materials	500,000		-500,000
Utensils & Tools	3,500,000		-3,500,000
Other Supplies & Services	11,200,000	9,406,822	-1,793,178
Total Relief Needs	67,060,000	125,496,313	58,436,313
<u>CAPITAL EQUIPMENT</u>			
Land & Buildings		2,550,000	2,550,000
Vehicles Purchase	90,000	260,750	170,750
Computers & Telecom Equipment	40,000	59,585	19,585
Office/Household Furniture & Equip.	120,000	123,279	3,279
<u>TRANSPORT, STORAGE & VEHICLES</u>			
Storage - Warehouse		28,775	28,775
Distribution & Monitoring (including Air Transport)	18,000,000	11,193,678	-6,806,322
Transport & Vehicles Costs	350,000	1,054,089	704,089
<u>PERSONNEL</u>			
International Staff	2,130,000	4,354,407	2,224,407
National Staff	428,000	4,060,688	3,632,688
National Society Staff	48,000	1,620,736	1,572,736
Consultants	108,000	192,343	84,343
<u>WORKSHOPS & TRAINING</u>			
Workshops & Training	150,000	2,960,857	2,810,857
<u>GENERAL EXPENSES</u>			
Travel	600,000	511,703	-88,297
Information & Public Relations	108,000	1,101,273	993,273
Office running costs	360,000	298,436	-61,564
Communication Costs	246,000	190,362	-55,638
Professional Fees	319,400	100,032	-219,368
Financial Charges	9,000	5,000	-4,000
Other General Expenses	288,000	78,409	-209,591
<u>PROGRAMME SUPPORT</u>			
Programme Support - PSR (6.5% of total)	6,288,274	10,861,654	4,573,380
Total Operational Needs	29,682,674	41,606,055	11,923,381
Total Appeal Budget (Cash & Kind)	96,742,674	167,102,368	70,359,694
(Less) : Available Resources		84,442,730	
Net Request	96,742,674	82,659,638	

REVISED APPEAL BUDGET SUMMARY
CHINA : SICHUAN EARTHQUAKE

MDRCN003

Emergency Relief Phase		Total cost CHF
Emergency Shelter		46,029,990
- Tents & Air Transport	34,721,435	
- Base Camp	1,082,550	
- Quilts	2,883,861	
- Hygiene kits	3,842,144	
- Food parcels	3,500,000	
Health & Care		251,959
- First Aid Kits	251,959	
Watsan & ERU		3,938,713
Other costs		3,659,186
- Personnel, Training, Vehicles & Admin	3,659,186	
Total Expenditure		53,879,848

Recovery Phase	No.of Units	Cost per unit	Total cost	Total cost CHF
Shelter reconstruction (Housing)				89,695,409
- Village Home Construction (4 townships) (includes contribution of materials for each family, monitoring & personnel costs)	22,540	3,979	89,695,409	
Health and Care & Psychosocial support				2,765,202
- Psychosocial Support & Awareness (IEC)	21 Villages		1,322,000	
- Community Based Health			616,800	
- Health in Emergency (training & personnel costs)			826,402	
Water and Sanitation & Hygiene promotion				3,715,976
- Rehabilitation of water and sanitation facilities	5,669	387	2,193,903	
- Personnel, Training, Logistics & other costs			1,522,073	
Livelihoods				8,349,120
- Unconditional Cash Grant/Vulnerable families	5,400	618	3,337,200	
- Cash Grant to replace livelihoods assets	9,000	256	2,304,000	
- Training & workshops, Personnel & other costs			2,707,920	
Disaster Management				4,438,503
- DP Centers	3	946,168	2,838,503	
- Training & workshops, Personnel & other costs	4	400,000	1,600,000	
Coordination & Management				4,258,310
- Capital Equipment			172,373	
- Transport, Storage & vehicles			179,650	
- Personnel (delegates, staff & consultants)			2,596,800	
- Training & workshops			266,790	
- General expenses (office running costs & travel)			1,042,697	
Total Budget				113,222,520
TOTAL REVISED BUDGET				167,102,368

** NOTE : Programme Support Recovery (PSR) has been apportioned under each sector.



*Sichuan Earthquake Support Operation
Shelter Program*

*Summary - Township Level
Zundao Township*



Province: Sichuan Prefecture: Deyang County: Mianzhu

<i>Village</i>	<i>No. of Natural Villages</i>	<i>No. of Homeowners</i>	<i>No. of Beneficiaries</i>	<i>Amount of payment</i>
Bao shui	6	415	1087	0
Gao an	11	846	2146	0
Huang jin	10	589	1559	0
Ma gui	14	822	2148	0
Peng hua	11	540	1434	0
Qin jia kan	15	1015	2813	0
Shuang quan	8	431	1161	0
Shuang tu	14	1212	3385	0
Tai ping	5	309	774	0
Wen feng	9	622	1604	0

Total no. of Natural villages: 103

Total no. of Homeowners: 6801

Total no. of Beneficiaries: 18111

Total amount of payment: 0



*Sichuan Earthquake Support Operation
Shelter Program*

*Summary - Village Level
Bao shui Village*



Province: Sichuan Prefecture: Deyang County: Mianzhu Township: Zundao

<i>Natural Village</i>	<i>No. of Homeowners</i>	<i>No. of Beneficiaries</i>	<i>Amount of payment</i>
1	66	172	0
2	57	157	0
3	56	142	0
4	57	140	0
5	104	293	0
6	75	183	0

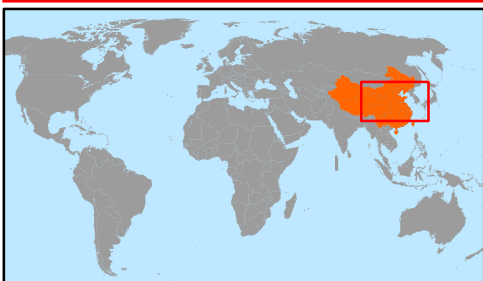
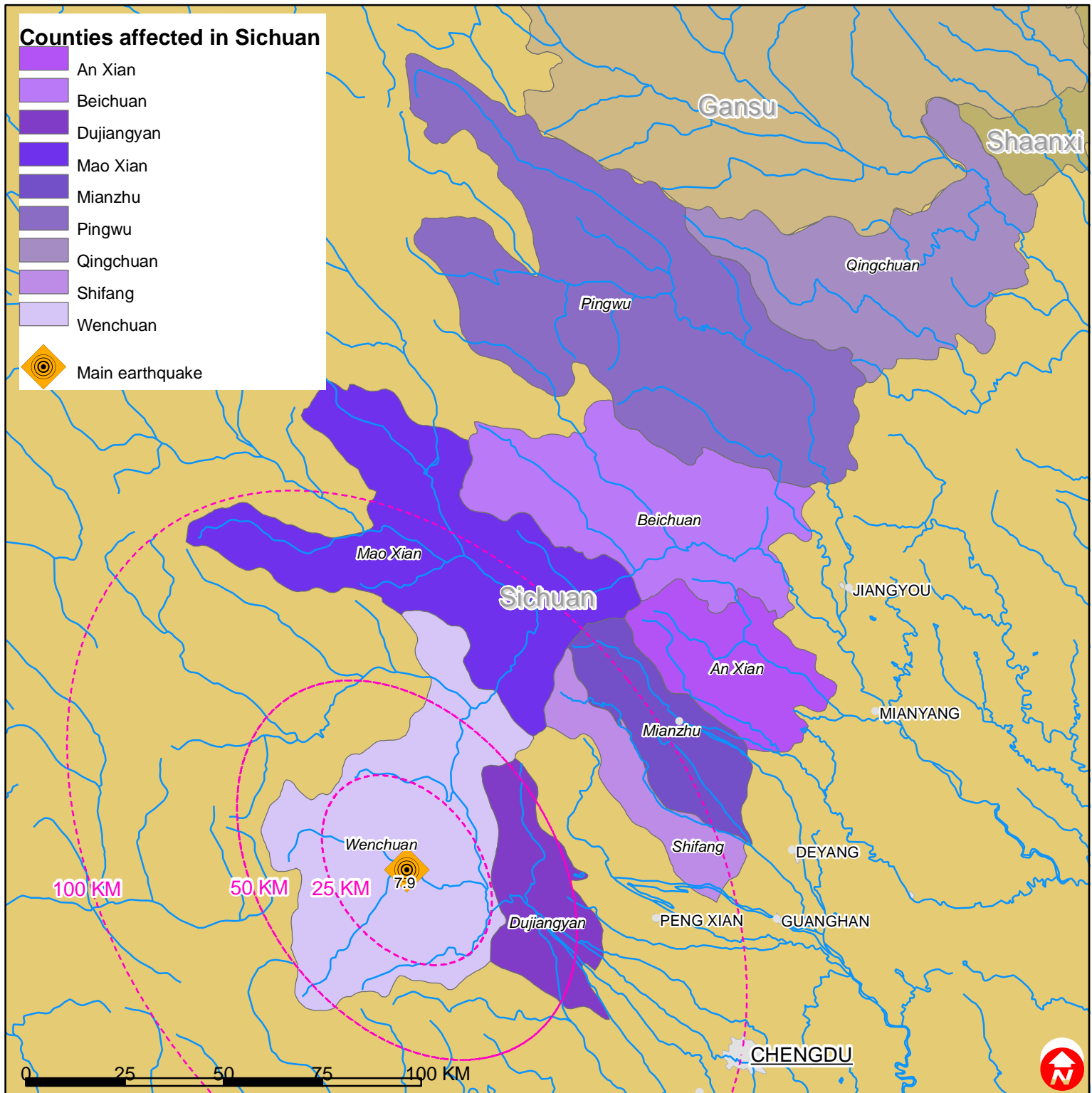
Total no. of Homeowners: 415

Total no. of Beneficiries: 1087

Total amount of payment: 0



China: Earthquake



The maps used do not imply the expression of any opinion on the part of the International Federation of the Red Cross and Red Crescent Societies or National Societies concerning the legal status of a territory or of its authorities.

Map data sources: ESRI, DEVINFO, GIST, CIESIN, International Federation - MDRCN003EAREV.mxd