

Operations update



International Federation
of Red Cross and Red Crescent Societies

Indonesia: West Sumatra earthquakes

Emergency Appeal n° MDRID004
GLIDE n° [TS-2009-000211-IDN](#)
Operations update No. 1
9 October 2009

Period covered by this update: 7 October – 8 October 2009

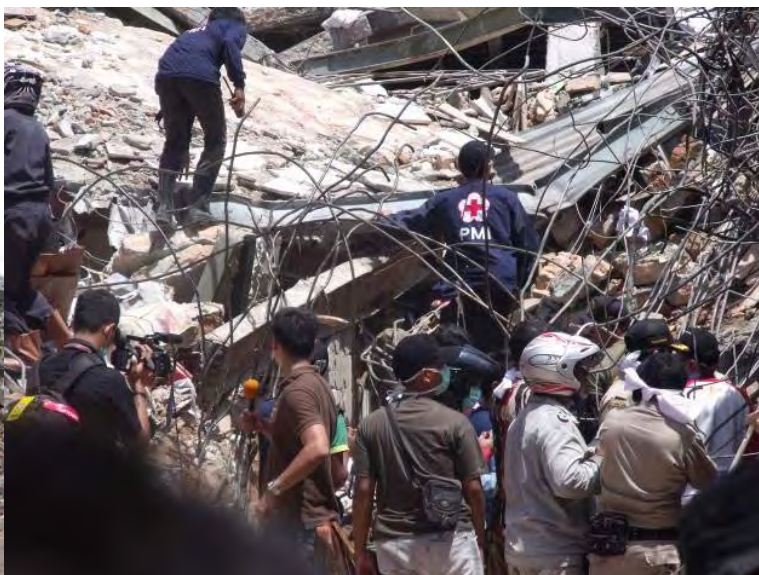
Appeal target: CHF 19,185,775 (USD 18.64 million or EUR 12.69 million)

Appeal coverage: 20 per cent; with contributions received to date, in cash and kind, and those in the pipeline, the appeal is currently approximately 77 per cent covered.

<click [here](#) for donors' response list, or [here](#) for contact details>

Appeal history:

- An emergency appeal for CHF 19,185,775 (USD 18.64 million or EUR 12.69 million) was issued on 7 October 2009 to support the Indonesia Red Cross (Palang Merah Indonesia/PMI) to assist up to 20,000 families (approximately 100,000 beneficiaries) for six months.
- A preliminary emergency appeal for CHF 6,842,032 (USD 6.6 million or EUR 4.53 million) was issued on 4 October 2009 to support the Indonesia Red Cross (Palang Merah Indonesia/PMI) to assist up to 5,000 families (approximately 25,000 beneficiaries) for six months.
- CHF 235,000 (USD 227,106 or EUR 155,302) was allocated from the International Federation's Disaster Relief Emergency Fund (DREF) on 1 October 2009 to support this operation.



The earthquakes which struck the west coast of Sumatra, Indonesia on 30 September 2009, affected up to 770,000 people and destroyed buildings, homes and livelihoods. Palang Merah Indonesia (Indonesia Red Cross) rapidly mobilized volunteers, search and rescue teams and relief items to support affected communities. PMI/ International Federation.

Summary:

The latest figures from the national disaster management agency (BNPB) of the Indonesian government confirmed that the death toll is now 704, with 295 people still missing and 2,090 injured. In terms of damage to houses, the figures are: 102,046 severely damaged; 49,864 moderately damaged; 54,606 slightly damaged. The West Sumatra Satkorlak (provincial disaster management unit) reported at least 1,000 landslide spots in Gunung Tigo highlands, located between Padang Pariaman and Agam districts. Assessments of the affected areas are being carried out. An immediate priority for the next few days is to provide shelter and other relief

items as well as potable water to people living in remote *kampongs* (villages of 10-15 families) without land access, who have received little or no relief aid since the earthquakes struck. To address the increased needs following the upscaling of the preliminary emergency appeal, the capacity of the PMI and the International Federation in terms of staff and volunteers will be further strengthened.

Partners which have made contributions to the appeal to date include the American Red Cross, British Red Cross/ British government, Canadian Red Cross/ Canadian government, Hong Kong branch of the Red Cross Society of China, Japanese Red Cross, Monaco Red Cross, Netherlands Red Cross/ Netherlands government, Spanish Red Cross, as well as the Organization of the Petroleum Exporting Countries (OPEC) Fund for International Development.

The International Federation, on behalf of PMI, would like to thank all partners for their generous response to this appeal.

[<click here to view the revised emergency appeal budget>](#); [<click here to view a map of the affected areas>](#)
[<click here to view contact details>](#)

The situation

Over a 48-hour period, two major earthquakes struck the west coast of the Indonesian island of Sumatra. The first quake, measuring 7.6 on the Richter scale, struck at 17:15 local time on 30 September. It struck at a depth of 71 km off the coast, close to the district of Padang in west Sumatra province. The second quake, measuring 6.8, struck an inland area 225 km southeast of Padang city.

The latest figures from the national disaster management agency (BNPB) of the Indonesian government confirmed the death toll is now 704, with 295 people still missing and 2,090 injured. In terms of damage to housing, the figures are: 102,046 severely damaged; 49,864 moderately damaged; 54,606 slightly damaged. The majority of affected populations are living near to their damaged houses and there is an urgent need for emergency shelter and non-food-items. The ministry of health earlier estimated that around 3,000 people might still be trapped under collapsed buildings. The government of Indonesia has since announced the end of the search and rescue phase, and work to start clearing the rubble with heavy equipment will begin.

A major and immediate priority will be the provision of medicines, food, shelter, potable water and other relief items to people living in remote kampongs (villages of 10-15 families) without road access, who have received little or no relief aid since the earthquakes struck. PMI medical and assessment teams reaching remote villages in Padang Pariaman, Padang Alai and Padang Tandikeh using a helicopter, have reported that while the health situation is generally stable, shelter and food access is a growing problem in these areas. Affected villagers also have to walk long distances to get water as the water table in the village wells have become too deep. However, with storm warnings over the next few days by the government and concerns over further landslides, it is expected that distribution efforts to these areas will be hampered. To date, the West Sumatra Satkorlak (provincial disaster management unit) has reported at least 1,000 landslide spots in Gunung Tigo highlands, located between Padang Pariaman and Agam districts. The United Nations Development Programme (UNDP) confirmed that large scale landslides occurred in at least three locations in Padang Pariaman district, destroying entire villages and agricultural land.

An immediate challenge will be to get affected families into temporary shelters as soon as possible as part of the recovery process. Some villagers, unable or frightened to stay in their damaged homes, are living under plastic tarpaulins in front of their houses.

With the provincial public health care system stretched, mobile clinics have helped to treat the injured people, particularly in the rural areas where access is more difficult. There is high rate of respiratory infections and diarrhoea, in addition to high levels of stress. The World Health Organization reported earlier that tetanus is also a rising problem. However, there are several other organizations on the ground focussed on meeting the needs in this regard.

With some 40 per cent of the provincial capital's school-age population having resumed classes, the UN education cluster is focusing its efforts on providing temporary learning spaces with the necessary water and sanitation facilities, as well as school kits and recreational materials, funding for psychosocial support and support for teachers. The main priority in the emergency response phase is to ensure access to temporary classes and quality education services.

In Padang, up to 70 per cent of water distribution networks are reported to be damaged. Water and sanitation is a priority as the shallow wells in many of the worst-hit villages have been destroyed, making access to clean water difficult. To meet basic drinking water needs, hundreds of thousands of litres per day will need to be

processed and stored at sites. Most affected areas have had the power supply restored and communication re-established.

The government of Sumatra has now confirmed that the emergency phase will last for a month and the reconstruction and rehabilitation stage is expected to commence in November and will last until March 2010.

Red Cross and Red Crescent action

To date, PMI has deployed 326 volunteers to help in the relief efforts. Currently, the PMI is targeting five districts: Kota Padang, Kota Pariaman, Padang Pariaman district, Pesisir Selatan district and Agam district. The volunteers are supporting a wide range of activities, including loading and unloading work at the airport, assessments, relief distributions, logistics and emergency health and care.

An eight-member PMI team comprising experienced volunteers and staff from various PMI branches/chapters throughout the country arrived on 7 October to provide support in logistics, relief distribution, assessments and the operations database. A water and sanitation delegate has joined the relief operation and is now supporting PMI on water and sanitation issues. A human resources delegate from the Federation office in Jakarta has also joined the operations team.

The relief operation will be scaled up in the coming days as more cargo flights arrive in Padang and a clearer picture of the situation appears through more comprehensive assessments. A USAID flight is due to arrive on 9 October in Padang with 45 tonnes of cargo. The PMI is currently distributing whatever relief stocks they have in Padang and family kits donated by AusAID. In addition, the International Federation's regional logistics unit in Kuala Lumpur are organizing seven flights between 12 to 18 October, each flight carrying 45 tonnes of cargo.

The Red Cross Red Crescent Movement is looking at all options for transport, including the last resort use of military helicopters under the umbrella of government approval. The communities in V Koto KP Dalam, V Koto Timur and Sungai Geringging Padang Pariaman who have received little or no relief so far due to their remoteness will be the focus of PMI's efforts over the next few days.

While there are extensive efforts on rapid and aerial grid assessments as well as ongoing medical relief and coordination with the UN, government and other humanitarian providers, the PMI will undertake a more comprehensive assessment to assess in further detail the early recovery options for shelter, emergency health and care, as well as water and sanitation. At the same time, PMI will ensure that immediate essential relief items are accessible to those in need.

The PMI restoring family links (RFL) team, supported by a joint ICRC-Swedish Red Cross project supervisor and operational since 2 October, has so far received 21 "I am alive.." requests and 38 "I am looking for.." requests, and helped to re-establish the family links for 16 people through the use of the cellular and satellite phones.



Palang Merah Indonesia (Indonesia Red Cross) volunteers quickly responded to the needs of communities affected by the earthquake in Cubadak Air, Pariaman district, including distributing family kits to the most vulnerable. PMI.

Progress on the proposed operation

Relief distributions (food and basic non-food items)

Objective: Up to 20,000 families (100,000 individuals) have their immediate needs provided for through the distribution of non-food items (NFI), such as hygiene kits, kitchen sets, clothing, bedding, jerry cans and household items, by the Red Cross Red Crescent relief operation.	
Expected results	Activities planned
The immediate needs of 20,000 affected families are met through relief distribution.	<ul style="list-style-type: none"> • Conduct rapid emergency needs and capacity assessments. • Develop beneficiary targeting strategy and registration system to deliver intended assistance. • Mobilize relief supplies from pre-position stocks, supplemented by additional local / regional procurement • Monitor and evaluate the relief activities and provide daily reporting on distributions to ensure accountability to the donors.

Over the past week, PMI relief distribution teams have reached up to 2,566 families in the districts of Padang and Pariaman. Over 20 tonnes of food and non-food relief items have been delivered using land and air transport.

The main focus in the coming days will be the three remote areas in Padang Pariaman which can only be accessed by air transport. Click [here](#) for relief distribution details.

Emergency shelter

Objective: Up to 20,000 families are assisted with adequate temporary shelter and additional 2,000 families in West Java	
Expected results	Activities planned
Improved shelter conditions for affected families with severely damaged and destroyed houses	<ul style="list-style-type: none"> • Analysis of needs based upon beneficiary registration database and ongoing assessments. • Mobilize emergency shelter resources from pre-positioned stocks in other parts of the country and identify culturally appropriate shelter solutions. • Additional procurement, transport, and emergency storage. • Distribution. • Monitoring and coordination.

The emergency shelter cluster, led by the International Federation, has been activated. A draft strategy for shelter has been adopted and shared with all partners. Working groups have been set up to take charge of assessments, reports and others. The possibility of building bamboo houses was discounted after it was pointed out that the resource is not locally available. A half to one day workshop is planned within the next few days to consider an appropriate design. A total of three staff from the International Federation's shelter department in Geneva have arrived in Padang to lead the shelter cluster.

As shelter is a priority, PMI and the International Federation will provide shelter kits to the affected people while waiting for more permanent shelter solutions. The shelter kits will provide tools and materials to families to repair their homes or build temporary shelters. Plans for distribution of the shelter kits will be confirmed after the cluster meeting on 10 October.

Emergency health and care

Objective: A projected 10,000 families (50,000 affected people) have benefited from a variety of preventive, curative and/or referral health services, thus reducing community health risks for a quicker rehabilitation and recovery process.	
Expected Results	Activities planned
Disaster-related diseases and deaths in hardest hit areas are reduced, enabling community members to participate in recovery activities	<ul style="list-style-type: none"> • Support PMI in establishing emergency health posts and/or mobile health clinics to serve hard-to-reach areas and meet gaps in health services. • Mobilize PMI first aid and ambulance services to meet the emergency health/medical needs. • Provide psychological support to the traumatized population. • Coordinate/work with national/local health authorities in the delivery of health activities, and provide direct material support as needed.
The resilience of the community is improved through better health awareness, knowledge and behaviour.	<ul style="list-style-type: none"> • Update/mobilize community-based volunteers on health/hygiene promotion and disease prevention according to identified priority needs. • Reproduce and distribute health education/information, education, communication (IEC) materials. • Conduct targeted health promotion/disease prevention campaigns as an integrated component in the delivery of PMI emergency response interventions (such as water, sanitation and hygiene promotion). • Distribute essential health supplies to reinforce health promotion/disease prevention campaigns, eg. mosquito nets. • Enforce community-based health and first aid activities as soon as possible to create a sustainable community approach through training of trainers/volunteers, and involvement of community leaders and members.
Psycho-social support is provided to the target population and PMI staff/volunteers as needed.	<ul style="list-style-type: none"> • Support PMI to deliver relevant, effective psycho-social support to affected populations, including updating/training of more volunteers. • Provide psycho-social support to staff and volunteers of PMI engaged in emergency response.

The PMI medical action team (MAT) has installed five health service units in internally displaced persons (IDPs) evacuation locations – two units in Padang and three units in Pariaman North, Central, and South. The teams are backed up by up to 100 volunteers. The volunteers were mobilized by PMI chapters of West Sumatra, Riau, Lampung, PMI Bogor Hospital, together with local volunteers. Besides helping those who come for treatment, MAT is also taking the initiative to reach out to survivors who cannot come for treatment due to their injuries. The PMI, with Federation support, conducted medical services using a helicopter to Padang Pariaman, Padang Alai and Padang Tandikeh. The service has reached some 1,000 beneficiaries in more than 20 remote villages to date, which have reported little or relief aid so far.

At time of reporting, the health service units and helicopter medical services have provided treatments to more than 3,000 affected people. The treated cases include mostly injuries directly related to the earthquakes as well as diarrhoea and respiratory infections. Some of the PMI medical personnel were trained as part of a joint German Red Cross ambulance project implemented in Medan, North Sumatera.

As further assistance to the injured, PMI has provided as many as 617 blood bags from its blood transfusion unit in West Sumatra branch. In total, the current stock of blood is 1,217 bags. To add to this, the blood transfusion unit is conducting blood donation campaigns in two locations, at its own premises and at the command post at Imam Bonjol Street in Padang City. Since the earthquake, the unit has distributed blood bags to the M. Jamil Hospital, Military Hospital, Siti Rahmah Hospital, Padang Hospital, Terapung Navy Hospital and Pariaman Hospital.

The PMI psychosocial support team, with support from the Turkish Red Crescent, visited Sikapa village (500 families) in Padang Pariaman on 8 October to provide psychosocial support. They visited 60 of the affected families and provided psychosocial first aid with simple tips to the families on how to cope with the stress following the earthquakes. The psychosocial support team helped to organize women sharing groups and structured play activities for 100 children, including a puppet show. The team will visit another village on 9 October, and will continue the work on their own when the Turkish Red Crescent team leaves by the 11 October.

PMI Emergency Health Services (7 October 2009)

No	Health Service points		People reached
	District	Village	
1	Pariaman	Desa Cubadak Air	2,470
		Desa Punggung Lading	490
		Desa Kampung Apar dan Marabau	1,075
		Koto Malalak	1,360
		PMI Kampung Apar	1,970
		R Lawe - Patamuan	310
		Tandike	770
2	Padang	Sisingamangaraja Sie Sapiah	425
		Sisingamangaraja and UNP	1,500
		Penggambiran	435
		Balau Baru/Simpang Rambutan	270
		Parak Rumbia	605
		Lubuk Cukam Kec Kayu Tanam	550
3	Padang Pariaman	Sariak Laweh Korong Koto Bangko; Sungai Gringsing	685
		Sungai Puar	475
		Korong Kolom	360
		Lambah Tigo	325
Total			14,075

Water, sanitation, and hygiene promotion

Objective: The risk of waterborne as well as water and sanitation-related diseases is reduced through the provision of safe water, adequate sanitation facilities, and hygiene promotion to 10,000 families (50,000 people) within the affected area for six months	
Expected results	Activities planned
Access to safe water is provided in the target evacuation centres.	<ul style="list-style-type: none"> Establish potable water treatment facilities. Set up water emergency water distribution network, including truck tankering, bladders and tapstands (already on stand-by in other parts of the country).
Appropriate sanitation facilities are provided at target evacuation centres.	<ul style="list-style-type: none"> Build sanitation facilities in emergency camps and in other locations where required.
The health status of the population is sustainably improved through behaviour change and hygiene promotion activities.	<ul style="list-style-type: none"> Establish disease vector and safe hygiene monitoring. Train community-based volunteers on participatory hygiene and sanitation transformation (PHAST)/International Federation water and sanitation software. Conduct hygiene promotion activities within the affected population, in conjunction with sanitation according to the assessment

The PMI emergency response team, working closely with the International Federation, American Red Cross and Spanish Red Cross have received eight water treatment plants and are finalizing the preparation and installation of six of these plants along a river in Padang City. Together, the plants can produce water for up to 26,400 people per day.

The water will be distributed by water trucks, five of which belong to PMI, along with others from PDAM (local water authority) and some other organizations. The relief operation has purchased 650 used drums and 360 pallets to build small platforms on which to set bladder tanks of 5,000 litres at ten strategic water points in Padang (out of a total of more than 100 water points around the city). The American Red Cross has offered to contribute financial support for fuel to the PDAM water trucks to ensure a continuous flow of water supply to the affected population.

Along with potable water, jerry cans and buckets will be distributed to facilitate collection as well as safe storage of water. Dry wells will be rehabilitated and bathing and sanitary facilities improved where needed. Hygiene kits in the pipeline will be complemented with soap and water purification tablets, and distributed together, with a hygiene promotion message by PMI volunteers.

Organizational development

Objective: To strengthen the immediate and long term capacities of PMI staff and volunteer at branch level to complete the operational needs and leave behind sustainable capacities for the future	
Expected results	Activities planned
The coordinated mobilization of local spontaneous volunteers has built short medium and long term branch capacities.	<ul style="list-style-type: none"> Conduct rapid volunteer mobilization and orientation in affected areas. Conduct support activities for volunteers including weekly peer support meetings to address stress and psycho-social issues. Develop and maintain a volunteer database registering skills and availability. Implement a volunteer insurance scheme in keeping with the International Federation's global volunteer insurance scheme.
Strengthened financial systems have receipted and spent locally and internally sourced donations efficiently and led to long term enhanced systems at branch level.	<ul style="list-style-type: none"> Existing branch financial management and reporting systems are scaled up to efficiently report on scaled up resources. Management information systems are strengthened at branch level to enable effective decision making.
Communications capacity at branch level will have been strengthened to increase PMI's visibility and also to undertake humanitarian diplomacy on behalf of affected communities.	<ul style="list-style-type: none"> Existing branch level communications infrastructure, roles and capacities will be immediately scaled up by allocating roles and equipment to both staff and volunteers to facilitate immediate information flow. Key messages from affected communities will be communicated by PMI to enable enhanced support from other responding institutions.
PMI's increased visibility in the	<ul style="list-style-type: none"> A branch and national level donor base will be developed to

operation will have led to strengthened national and branch level fundraising capabilities.	capture information from individuals, organizations and businesses contributing to the operation. <ul style="list-style-type: none"> • A transparent reporting mechanism will be strengthened to inform all donors of what PMI activities they have assisted to build long term donor confidence in PMI.
---	---

International Federation staff and their counterparts in PMI are working closely as a team in the relief and early recovery operation. This will help to reinforce and build capacity within the local PMI chapter, with the aim of leaving the chapter with higher capacities than before the earthquakes. It will also allow PMI staff and volunteers to pick up new skills and knowledge in their respective areas through learning by doing, with Federation and partner national society staff serving as mentors. At the same time, Federation and partner national society staff also gain new perspectives from the close cooperation with PMI staff. The relief operation is also investing in equipping the chapter with essential items and inventory to enable them to have a stronger operational structure.

Among other things, Federation support is being provided to PMI to set up a stock record and reporting system. This will be carried out by the International Federation logistician from Banda Aceh through training given to PMI Padang staff. In communications, the International Federation and PMI communication staff sit in the same office to share and learn from each other, supported by several staff from partner national societies in-country. Field PMI staff are also learning more about planning, monitoring, evaluation and reporting (PMER) from the Federation's PMER officer based in Padang.

Coordination and partnerships

To ensure better coordination within the Movement, a daily meeting is held between the International Federation, PMI and the partner national societies with a presence in Padang, to share information and discuss emerging issues. The relief operations coordinator or his representative attends daily coordination meetings in Padang chaired by the BNPB and UN. This forum allows the Red Cross Red Crescent Movement to share and exchange information on its activities and progress with the West Sumatra Satkorlak (provincial disaster management unit), UN agencies and other humanitarian organizations and non-governmental organizations working in Padang.

The International Federation, leading the shelter cluster is organizing regular meetings with other partners and stakeholders in Padang to develop longer-term shelter solutions.

Similar coordination meetings are held at the national level in Jakarta. A meeting between the International Federation, PMI and partner national societies in Jakarta on 6 October led to a revision of the preliminary appeal launched on 4 October, to allow the PMI to add to the increased identified needs of the affected people, which became clearer through the findings of assessments and the updates from the government of Indonesia.

The government disaster management structure, aiming for the strongest possible coordinated response, has based itself in the governor's office in Padang, where the majority of the agencies involved in the overall coordination of response are working. The UN is expected to launch a consolidated appeal on 9 October.

Capacity of the PMI

PMI has a strong and well-established capacity in emergency preparedness and response, considering the widespread and frequent occurrence of natural disasters throughout the world's largest archipelago. In addition, as a direct result of the build-up in volunteers and human resource capacities following the December 2004 tsunami in Aceh province of northern Sumatra, PMI has built up a robust cooperation among its branches. PMI branches actively engaged in the operations include Central Java, Jambi, Lampung, Riau, Bengkulu, Aceh NAD, Jakarta and North Sumatra.

In addition, given the longer term programming of the Canadian Red Cross, Danish Red Cross, French Red Cross, German Red Cross and other partner national societies in disaster risk reduction, the capacity of the national society has been augmented by the existence of community-based action teams – core components of disaster risk reduction programming of PMI.

Capacity of International Federation

Following the 26 December 2004 tsunami that struck Aceh province and the 28 March 2005 earthquake under Nias Island, the International Federation capacity in support of PMI has expanded substantially, in terms of

personnel and resources in the country. At present, the International Federation country team consists of 25 delegates and 201 national staff who support the PMI in their emergency and longer-term programming.

In support of the initial emergency response, the International Federation country office has deployed locally-based relief, logistics, disaster management, health, telecommunications and information and reporting staff to support PMI for this operation. In addition, the Asia Pacific zone office in Kuala Lumpur has reinforced the country office capacity with deploying communications and reporting representatives. The preliminary appeal budget identifies human resources required for the next six months.

Communications – Advocacy and Public Information

The International Federation continues to maintain as a priority, a strong communication capacity for the relief operations to meet media needs. The international media has maintained a high level of interest in the relief operations in Padang, with a large number of interview requests to the Federation from the BBC, Aljazeera, ABC Australia and CBC Canada, among others. The focus of the communication team in Padang is media relations, providing a steady flow of materials on the Federation website, such as web stories, as well as sharing photographs with partner national societies. The Red Cross Red Crescent relief operation has received wide coverage through the daily aid workers' diary maintained on BBC online. Informal daily updates are shared with Federation's country office in Jakarta and all Movement partners.

To support the appeal, a few media visits using a helicopter have been undertaken with BBC and Reuters to document the work of the PMI medical action team. The communications team is documenting different aspects of the operation, including relief distribution, and search and rescue work. The team is also developing key messages for the use of partner national societies.

A professional photographer is being engaged to document the early stages of the emergency, while a Canadian documentary team is awaiting approval from the International Federation to do an observation documentary on the evolving relief operation.

Logistics

All appeal items listed on the original mobilization table for 5,000 families posted by the regional logistics unit in Kuala Lumpur have been covered. Rotations of an IL76 charter aircraft are due to start in the coming days from Kuala Lumpur to Padang to move these items from the pre-positioned warehouse in Kuala Lumpur. In addition Netherlands Red Cross will be sending a charter aircraft of tents from stocks in Europe and Pakistan.

The mobilization table has been updated to include needs for 20,000 families and work has started on covering these needs.

The International Federation Dubai fleet has offered the use of eight of its Ford Rangers which were on loan to the Federation for the tsunami operations. These vehicles were to have been auctioned off as they had passed the normal operational period. Up to four of the vehicles will replace the ones which arrived earlier from Banda Aceh, while another four will be put at the disposal of PMI in Padang. In addition, 12 motorcycles will be deployed from Banda Aceh to help with relief work in the more remote affected areas where there are no roads but only small paths which can be accessed by motorcycles only.

To ensure sufficient storage space in the free warehouse facility at the cinnamon factory near the airport, rub halls from Banda Aceh will be erected in the grounds of the cinnamon factory. An additional warehouse in Padang town has just been leased.

Two International Federation logistics national staff from Banda Aceh have joined the operation in Padang for a short period to fill in the gap till permanent staff for the operation is hired. They will be employed at the warehouse and at the PMI branch emergency response unit office.

Donors are requested to coordinate with the regional logistics unit in Kuala Lumpur regarding outstanding needs. Shipping instructions will be provided to donors with a consignment tracking number to be issued before shipping any goods to the operation. Procurement of goods and transport can also be arranged through the regional logistics unit.



On Wednesday, 7 October, members of the Indonesian Red Cross (Palang Merah Indonesia – PMI) reached a village two hours into the hills from the city of Pariaman. A team of five young Red Cross volunteers conduct door-to-door enquiries and speak to the village chief to find how many people have been killed and injured, how many homes damaged and most importantly what relief items the people in the village need most. When they complete their assessment, the team will report back to PMI’s earthquake operational centre in Padang and relief teams will get supplies to the village the following day.

Suherman had lived in the same house for 60 years, until the earthquake brought everything to the ground. Now Suherman and his wife and their five children are living in a tent outside his brother’s house, which has also been damaged by the quake.

“I was sitting outside the house relaxing when everything started to shake. My head was aching and I felt sick too. I grabbed my three-year old son and we all ran from the house as fast as we could. Everyone was screaming and shouting and very scared”, remembers Suherman.

“We ran as far away as we could and the earthquake lasted for three or four minutes. When we looked back at the house the whole building had caved in. When that happened, I was confused and my body was shaking and I thought it was the end of the world.”

Suherman’s remote village has not yet received any outside help and he says they desperately need rice and things to build shelters with – and money to rebuild their homes.

“We really need shelter. There are now 10 of us at my brother’s house and that has been damaged too so we are afraid to go inside because of the aftershocks. Every shock feels like a small earthquake to me. My youngest son cries every night since the earthquake and it is too cold for him at night, sleeping in a tent.”

However, Suherman is looking to the future and wants to rebuild the family home as quickly as possible, “I am upset about the house, but there is nothing I can do but build it again and keep my spirits focused on that.”

Over the following month Red Cross teams will continue to provide relief items, however in the longer term the organization aims to help people recover from the earthquake.

Sharon Reader, British Red Cross.

How we work

All International Federation assistance seeks to adhere to the [Code of Conduct for the International Red Cross and Red Crescent Movement and Non-Governmental Organizations \(NGOs\) in Disaster Relief](#) and is committed to the [Humanitarian Charter and Minimum Standards in Disaster Response \(Sphere\)](#) in delivering assistance to the most vulnerable.

The International Federation's activities are aligned with its Global Agenda, which sets out four broad goals to meet the Federation's mission to "improve the lives of vulnerable people by mobilizing the power of humanity".

Global Agenda Goals:

- Reduce the numbers of deaths, injuries and impact from disasters.
- Reduce the number of deaths, illnesses and impact from diseases and public health emergencies.
- Increase local community, civil society and Red Cross Red Crescent capacity to address the most urgent situations of vulnerability.
- Reduce intolerance, discrimination and social exclusion and promote respect for diversity and human dignity.

Contact information

For further information specifically related to this operation please contact:

- In Jakarta: Palang Merah Indonesia (Indonesia Red Cross):
Iyang Sukandar, Secretary General, phone: +62 217 992 325; fax: +62 217 995 188;
email: pmi@pmi.or.id
- In Jakarta: Indonesia country office:
 - Bob McKerrow, head of country office, phone: +62811 824 859;
email: bob.mckerrow@ifrc.org
 - Wayne Ulrich, disaster management coordinator, mobile: +62 8118 6614,
email: wayne.ulrich@ifrc.org
- In Kuala Lumpur: International Federation Asia-Pacific zone office:
 - Michael Annear, disaster management coordinator,
phone: +603 9207 5726, mobile: +6012 234 6591, email: michael.annear@ifrc.org
 - Jagan Chapagain, deputy head of zone office,
phone: +603 9207 5700, mobile: +6012 215 3765, email: jagan.chapagain@ifrc.org
 - Penny Elghady, resource mobilization and PMER coordinator,
email: penny.elghady@ifrc.org; phone: +603 9207 5775, fax: +603 2161 0670
Please send all pledges of funding to zonerm.asiapacific@ifrc.org
 - Jeremy Francis, regional logistics coordinator,
phone: +6012 298 9752, fax: +603 2168 8573, email: jeremy.francis@ifrc.org
 - Jason Smith, zone communications manager, mobile: +6012 387 0829, email: jason.smith@ifrc.org; Patrick Fuller, tsunami communications coordinator
phone: +603 9207 5705, mobile: +6012 230 8451 fax: +603 2161 0670,
email: patrick.fuller@ifrc.org

**[<emergency appeal budget, annex and map below;
click here to return to the title page>](#)**

APPEAL BUDGET SUMMARY

Annex 1

Indonesia : West Sumatra Earthquakes

MDRID004

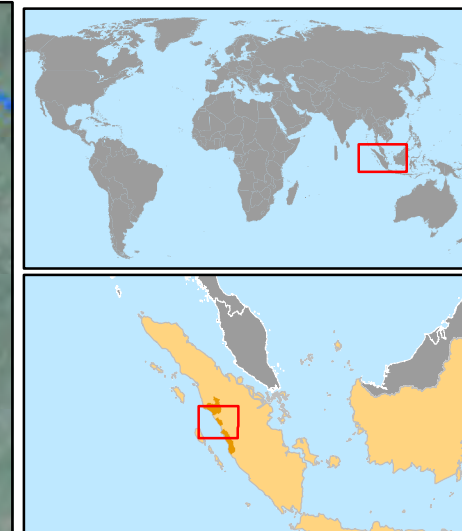
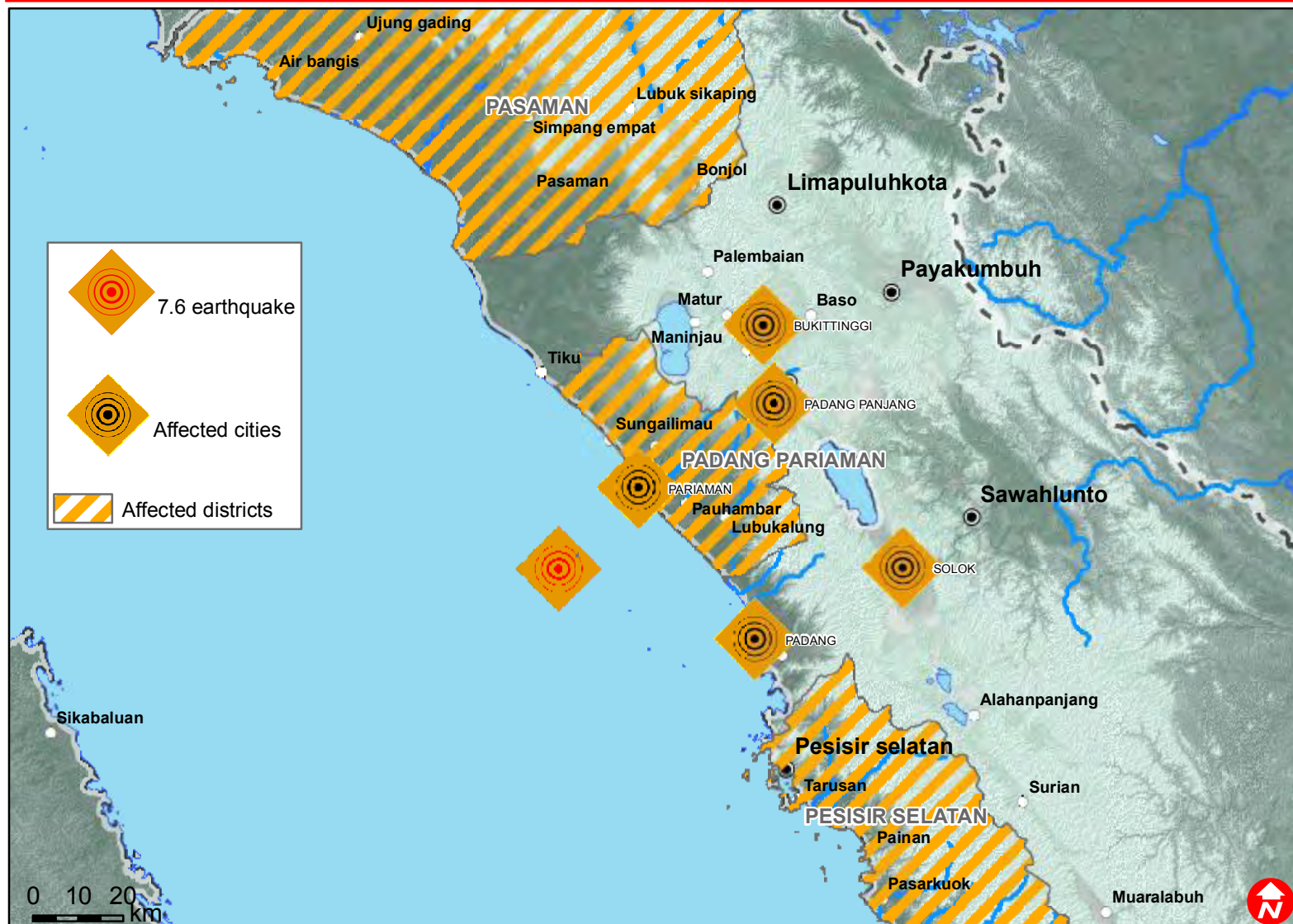
	ORIGINAL	REVISED	VARIANCE
<u>RELIEF NEEDS</u>			
Shelter	3,920,000	12,610,000	8,690,000
Clothing & Textiles	105,000	280,000	175,000
Water & Sanitation	121,750	222,000	100,250
Medical & First Aid	158,000	360,000	202,000
Utensils & Tools	374,550	1,498,200	1,123,650
Other Supplies & Services	120,000	280,000	160,000
Total Relief Needs	4,799,300	15,250,200	10,450,900
<u>CAPITAL EQUIPMENT</u>			
Computers & Telecom Equipment	150,000	150,000	-
Office/Household Furniture & Equip.	40,000	40,000	-
Other Machinery & Equipment	50,000	50,000	-
<u>TRANSPORT, STORAGE & VEHICLES</u>			
Storage - Warehouse	80,000	392,500	312,500
Distribution & Monitoring	80,000	320,000	240,000
Transport & Vehicles Costs	600,000	700,000	100,000
<u>PERSONNEL</u>			
International Staff	288,000	336,000	48,000
National Staff	80,000	220,000	140,000
National Society Staff	60,000	120,000	60,000
<u>GENERAL EXPENSES</u>			
Travel	50,000	100,000	50,000
Information & Public Relations	20,000	60,000	40,000
Office running costs	50,000	120,000	70,000
Communication Costs	30,000	60,000	30,000
Professional Fees	20,000	20,000	-
<u>PROGRAMME SUPPORT</u>			
Programme Support - PSR (6.5% of total)	444,732	1,247,075	802,343
Total Operational Needs	2,042,732	3,935,575	1,892,843
Total Appeal Budget (Cash & Kind)	6,842,032	19,185,775	12,343,743
Less Available Resources			
Net Request	6,842,032	19,185,775	

No	Relief Distribution Point		Relief Item											Number of people reached	
	District	Village	Family kit	baby kit	Hygiene kit	Mosquito net	Tarpaulin	Biscuits	Blanket	Mineral water	Mat	Sarong	Food parcel		Family tent
1	Pariaman	PMI Branch												50	250
		DUSUN CUBADAK AIR					300		500	41	500				2,500
			205				206								1,220
							204			34	204	204			1,020
		Cimparuh & Marunggi											500		
		Sikabu & Marabau											1,000		
		Cipakak	298				298					298			1,490
		Sirombong Barat													320
		Sirombong Timur													345
	Kasia Putih barat													555	
	Kasia Putih timur													500	
2	Padang	Desa Andalas	49		49	49	49	13	49	13					245
		Sawahen Timur	43		43	43	43	11		11					215
		Lubuk Buaya	239					60	239	60					1,195
		Asr. TNI - AD Ganting RW IV	73		73	73	73		73				73		365
			79					20	79	20					395
		Lubuk Pandan	750				750						750		
			400												2,000
		SimpangHaru Padang Timur	61		61	61	61		61				61		305
	kampung durian talang; padang ai	21					21	21			4			105	
Sub Total			2218 sets		226 sets	226 sets	1,984 sheets	125 boxes	1,022 pieces	179 boxes	1,002 pieces	208 pieces	2,384 boxes	50 sets	13,025 people

¹ Number of items distributed and people reached continue to be monitored and updated. However, some figures remain unavailable at time of reporting.



Indonesia: Earthquake



The Indonesia Red Cross (Palang Merah Indonesia/PMI) and the International Federation have been working round the clock to help with the relief efforts in Padang and to assess the full extent of the damage and destruction caused by the earthquakes. The National Disaster Management Agency (BNPB) of the Government of Indonesia confirmed the death toll has risen to 603 people, with 2,451 people injured. The BNPB listed 343 people as missing while 736 households have been internally displaced. The damage and destruction is spread over eight cities: Padang City, Pariaman City, Bukittinggi City, Padang Pariaman District, Pesisir Selatan District, Solok City, Padang Panjang City and Pasaman Barat District. In total, 777,893 people may have been affected. The Ministry of Health (MoH) further estimates that another 3,000 people might still be trapped under collapsed buildings, with time running out for survivors.