

www.ifrc.org
Saving lives,
changing minds.

Disaster relief emergency fund (DREF) India: Sikkim Earthquake

 International Federation
of Red Cross and Red Crescent Societies

DREF operation n° MDRIN008
GLIDE n° EQ-2011-000136-IND
22 September 2011

The International Federation of Red Cross and Red Crescent (IFRC) Disaster Relief Emergency Fund (DREF) is a source of un-earmarked money created by the Federation in 1985 to ensure that immediate financial support is available for Red Cross and Red Crescent emergency response. The DREF is a vital part of the International Federation's disaster response system and increases the ability of National Societies to respond to disasters.

CHF 97,137 has been allocated from the IFRC's Disaster Relief Emergency Fund (DREF) to support the National Society in delivering immediate assistance to some 5,000 beneficiaries. Unearmarked funds to repay DREF are encouraged.

Summary: An earthquake with a 6.9 magnitude occurred on 18 September 2011 at 18:11 hrs IST in the border region between India and Nepal. The preliminary parameters of this earthquake, as estimated by the Seismic Monitoring Network of India Meteorological Department (IMD) are as follows:

Date and time of occurrence : 18:11 hrs (IST), 18/09/2011
Magnitude : 6.9
Focal depth : 10 Km
Epicentre Latitude & Longitude : 27.7°N & 88.2 °E

The event, which comes under the category of "moderate earthquake", was also widely felt in the states of Sikkim, Assam, Meghalaya, northern parts of West Bengal, Bihar, and parts of other eastern and northern regions of India. The epicentre lies in a seismically known and active belt called the Alpide-Himalayan seismic belt.

The main shock was followed by several aftershocks of low intensity which have triggered landslides in the backdrop of persistent heavy rains.

To date, the actual damage is not fully reported as many part of the worst affected northern district of Sikkim remains inaccessible due to landslides. Preliminary reports show that damage to infrastructure is wide-spread and the number of people dead is increasing. Inaccessibility due to damaged roads, collapsed communication networks, as well as poor weather conditions are hindering efforts to reach the affected population.

To meet the emergency needs of the affected people, the Indian Red Cross Society (IRCS) intends to support 5,000 affected people with shelter materials, non-food items, first aid services, as well as clean water.

This operation is expected to be implemented in three months, and will be completed by 22 December, 2011; a Final Report will be made available three months after the end of the operation (by 22 March, 2012).

[<click here for the DREF budget; here for contact details; here to view the map of the affected area>](#)

The situation

By 20 September, rescue workers were able to clear the blockades caused by landslides both from Bagdogra to Gangtok and Gantok to Mangan. Due to constant rainfall and landslide, the road NH 31A connecting Sikkim with the rest of India was blocked intermittently due to mudslides, and it is now re-opened.

The first aerial assessment of Mangan showed that the quake has left death and devastation behind, with the total death toll exceeded 80 in the affected states in India. People are still feared trapped under the debris in far-flung villages, amidst reports of fresh landslides at Gaikhol. Some students are trapped in Ravangla in West Sikkim where aerial rescue is being carried out.

Though the Army has finally reached the epicentre, in the town of Mangan, restoring communication lines remains a big challenge. Nine helicopters were mobilised and 10 doctors airlifted to Chung-thang in North Sikkim. The army has also deployed 10 medical units. The biggest challenge right now is to get the access to transport emergency supplies to the needy people in remote areas.

As the road opens up, the enormity of the damage will emerge. Besides the loss to human lives, over 15,000 houses were razed to the ground and more than 100,000 were partially damaged. While the state government is gradually restoring essential services like power and water supplies, the government is yet to fully assess the economic damage.

The state government of Sikkim has opened relief camps in each district, where at least 3,250 people were catered to date. Moreover, relief supplies including 1,000 pieces of blankets, 400 extendable tents and 200 arctic tents are being dispatched to the affected areas.

Coordination and partnerships

A meeting held in Sphere India Office among humanitarian agencies on 19 September 2011 shared the challenges on relief operation due to access to the affected areas. IRCS is working in close coordination with Ministry of Health and Family Welfare which is its nodal ministry.

The IFRC country office is coordinating with the in-country partner national societies and is keeping them updated on the unfolding situation and the IRCS action.

Red Cross and Red Crescent action

In response to a request from the Sikkim state branch, IRCS headquarters has deployed a team of national disaster response team (NDRT) and national disaster water and sanitation response team (NDWRT) to reinforce the capacities of the state branch. These teams will help the state branch in assessing the needs of the affected people and in shaping up the relief operation. Two NDRT members who are trained in Restoring Family Links (RFL) are also being deployed. As the assessment team starts working in Sikkim, more information is expected to flow and will facilitate in shaping the relief operation.

IRCS national headquarters has also released non food items to the state branch based on initial requests. Airlifting of the following emergency items was performed on 22 September:

Sr. No.	Items	Quantities
1	Stoves	200
2	Tarpaulin	500
3	Woollen blanket	2,000
4	Water purification units (NOMAD)	1

The needs

The unfolding situation has revealed that there is huge infrastructure loss. A total of 15,000 houses are completely damaged leaving around 75,000 people homeless while 100,000 houses are partially damaged. In winter, the temperature will drop to -40°C in the northern region due to its high altitude. Therefore, support in repairing of shelters and provision of woollen blankets are most needed by the displaced people. Keeping in mind the experience of responding to the Leh flash floods in 2010, which was also a popular mountainous tourist area where many foreigners were stranded and missing, the delivery of RFL service is also a part of IRCS response.

This DREF operation at this initial stage intends to support non-food relief, shelter, first aid and clean water to 1,000 families (approximately 5,000 people). It also intends to support the deployment of NDRT and NDWRT members to reinforce capacities of the Sikkim state branch. The outcome of the assessment being conducted will inform a possible revision to the current proposed operation.

This operation aims at reaching 5,000 affected people in the first two week of emergency response. While assessment continues at the remote areas, and with close coordination with the government and other concerned humanitarian agencies, there will be a clearer picture on the outstanding needs in the coming days and the response plan may scale up where required.

The proposed operation

IRCS will assist 1,000 families (approximately 5,000 people) by providing non-food items, shelter materials, first-aid service and clean water to meet their emergency needs.

Relief distributions (food and basic non-food items)
Outcome: The immediate needs of 1,000 earthquake affected families (5,000 beneficiaries) have been met through relief distributions in Sikkim.
Activities planned: <ul style="list-style-type: none">• Detailed need assessment by IRCS and mobilisation of national disaster response team (NDRT) and national disaster water and sanitation response team (NDWRT) members and volunteers.• Procurement of non-food item stocks.• Dispatch and transportation by IRCS to the distribution sites.• Distribution of relief items (woollen blankets) by trained IRCS volunteers and staff.• Re-stock relief items distributed.• Regular detailed monitoring and reporting of distributions.

Emergency health
Outcome: First aid and referral services for the injured and sick people in severely-hit areas are available.
Activities planned: <ul style="list-style-type: none">• Procurement of first aid kits.• Provision of first aid to earthquake affected people in Sikkim.

Emergency shelter
Outcome: 1,000 families have received tools to repair their damaged houses and to salvage material of the damaged houses.
Activities planned: <ul style="list-style-type: none">• Identification of beneficiaries.• Procurement of Shelter kit and tarpaulin.• Distribution of the Shelter kits along with tarpaulin by trained staff and volunteers.• Monitoring the use of shelter kit.• Regular detailed monitoring and reporting of distributions.

Water, sanitation, and hygiene promotion

Outcome: Water and sanitation related diseases are reduced for 1,000 families through access to safe drinking water.

Activities planned:

- Assess the damage to existing water supply systems and requirement for emergency water supply.
- Selection of most vulnerable people as beneficiaries.
- Deployment of water treatment unit(s).
- Treatment and distribution of safe drinking water for up to 5,000 people (1,000 families).
- Monitoring and evaluation.

Contact information

For further information specifically related to this operation please contact:

- **Indian Red Cross Society:** Dr. SP Agarwal, Secretary General Tel: +91.11.2371.6441; email: spagarwalsg@indianredcross.org
- **IFRC India country office:** Mr. John Roche, Head of office, email: john.roche@ifrc.org, phone: +91 11 2332 4203
- **IFRC South Asia regional office, in India:**
 - Mr. Azmat Ulla, Head of regional office, email: azmat.ulla@ifrc.org, phone: +91 11 2411 1122, fax: +91 11 2411 1128.
 - Ms Maija-Liisa Fors, Regional programme coordinator; phone: +91.11.2411.1125; fax: +91.11.2411.1128; email: majialiisa.fors@ifrc.org.
- **IFRC Asia Pacific Zone office, in Malaysia:**
 - Mr Enkas Chau, Operations Coordinator, phone: +603 9207 5798; mobile: +6012 305 8332; email: enkas.chau@ifrc.org.
 - Mr Al Panico, Head of Operations, phone: + 603 9207 5700, email: al.panico@ifrc.org.
 - Mr Alan Bradbury, Head of Resource Mobilization and Planning, Monitoring, Evaluation and Reporting (PMER), email: alan.bradbury@ifrc.org, phone: +603 9207 5775.
 - Mr Jeremy Francis, acting head of regional logistics unit; mobile: +6012 298 9752; email: jeremy.francis@ifrc.org.



Click here

1. DREF budget and map **[below](#)**
2. Click **[here](#)** to return to the title page

How we work

All IFRC assistance seeks to adhere to the Code of Conduct for the International Red Cross and Red Crescent Movement and Non-Governmental Organizations (NGO's) in Disaster Relief and the Humanitarian Charter and Minimum Standards in Disaster Response (Sphere) in delivering assistance to the most vulnerable.

The IFRC's vision is to inspire, encourage, facilitate and promote at all times all forms of humanitarian activities by National Societies, with a view to preventing and alleviating human suffering, and thereby contributing to the maintenance and promotion of human dignity and peace in the world.

www.ifrc.org

Saving lives, changing minds.



The IFRC's work is guided by Strategy 2020 which puts forward three strategic aims:

- 1.** Save lives, protect livelihoods, and strengthen recovery from disaster and crises.
 - 2.** Enable healthy and safe living.
 - 3.** Promote social inclusion and a culture of non-violence and peace.
-

DREF OPERATION

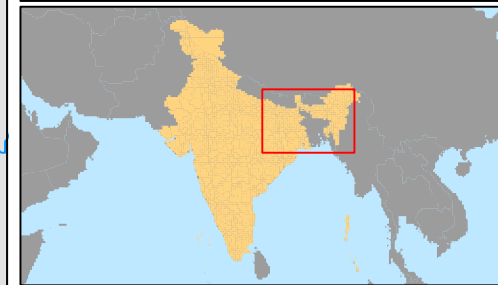
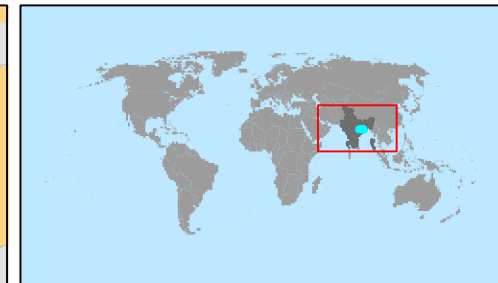
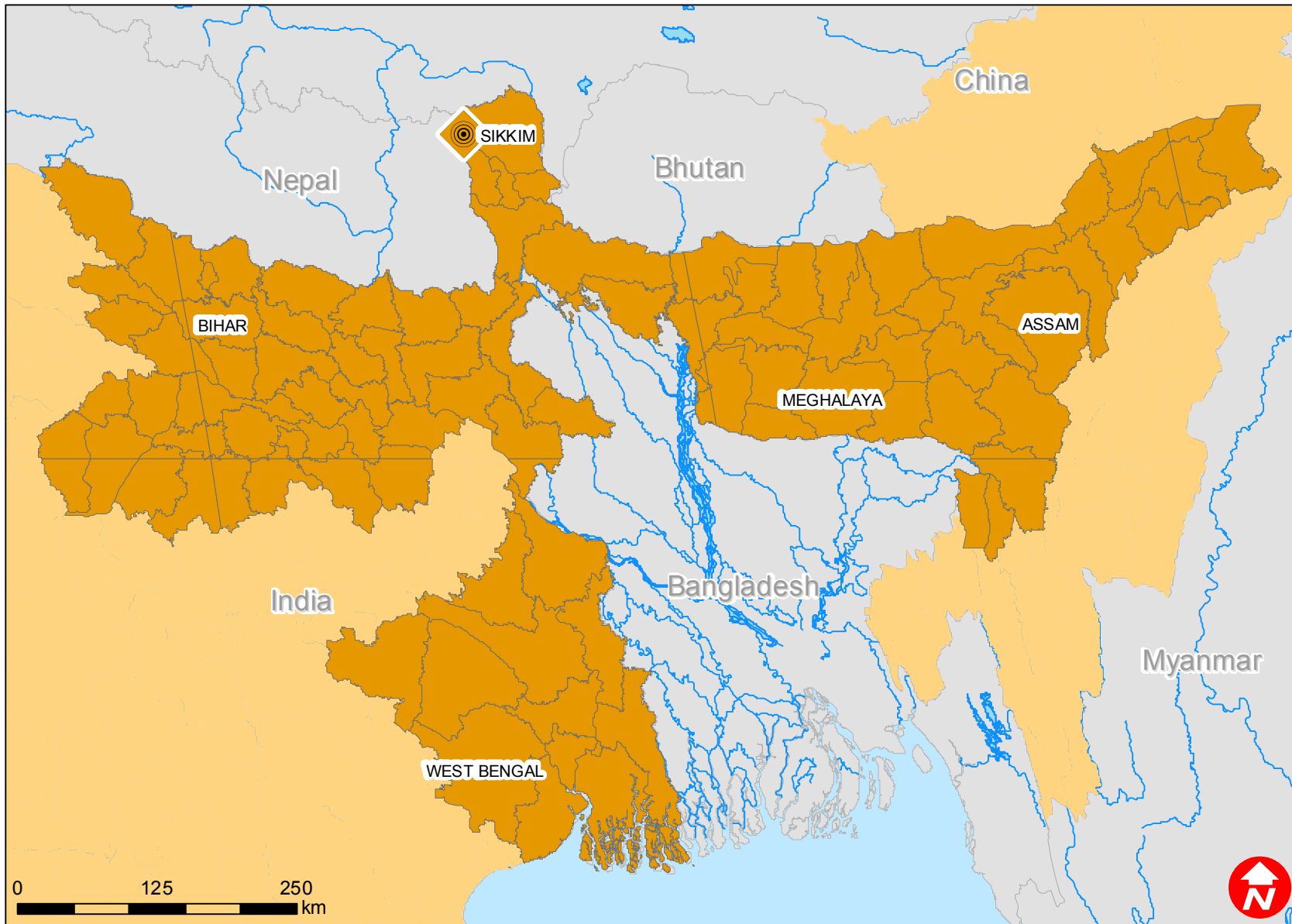
20-09-11



MDRIN008 India : Sikkim Earthquake

Budget Group	DREF Grant Budget CHF
Shelter - Relief	51,179
Clothing & Textiles	10,784
Medical & First Aid	914
Total RELIEF ITEMS, CONSTRUCTION AND SUPPLIES	62,877
Distribution & Monitoring	9,139
Total LOGISTICS, TRANSPORT AND STORAGE	9,139
Travel	14,623
Communications	914
Other General Expenses	3,656
Total GENERAL EXPENDITURES	19,192
Programme and Supplementary Services Recovery	5,929
Total INDIRECT COSTS	5,929
TOTAL BUDGET	97,137



India: Earthquake



-  Earthquake epicentre
-  Affected states