

# INFORMATION BULLETIN



International Federation of Red Cross and Red Crescent Societies  
Fédération internationale des Sociétés de la Croix-Rouge et du Croissant-Rouge  
Federación Internacional de Sociedades de la Cruz Roja y de la Media Luna Roja  
الاتحاد الدولي لجمعيات الصليب الأحمر والهلال الأحمر

## INDONESIA: BENGKULU EARTHQUAKE

*Information Bulletin*  
no. 2/2007  
17 September 2007  
*Glide number EQ-2007-000157-IDN*

*The Federation's mission is to improve the lives of vulnerable people by mobilizing the power of humanity. It is the world's largest humanitarian organization and its millions of volunteers are active in 185 countries.*

### In Brief

**This Bulletin is being issued for information only, and reflects the situation and the information available at this time. The Federation is not seeking funding or other assistance from donors for this operation at this time.**

### The Situation

An earthquake measuring 8.4 on the Richter scale struck Indonesia's Sumatera Island near Bengkulu on Wednesday, 12 September 2007. Many aftershocks have been reported with tremors felt in remote areas.

[Click here for a map of the area.](#)

Based on information gathered from the assessment team in the field, the district of Muko-muko in the northern part of Bengkulu province was hit by a four-metre-high tsunami, which struck 100 metres inland from the shoreline. This has affected approximately 200 families, who have already fled their houses to higher ground after the earthquake. Presently, some of the family members occasionally go back to check on their houses but have not yet returned permanently.

While the Government of Indonesia is not requesting any international support at the moment, the government disaster coordination unit of Bengkulu Province (Satuan Koordinasi Pelaksana Penanganan Bencana/Satkorlak) claimed the previous weekend that more than 14,000 houses have been damaged, of which 3,830 have totally collapsed. Details are as follow<sup>1</sup>:

DISTRICTS	AFFECTED		HOUSES			DAMAGED SCHOOLS			HOSPITALS/CLINICS		
	Deaths	Injury	Total damage	Heavy damage	Light damage	Total damage	Heavy damage	Light damage	Totally damage	Heavy damage	Light damage
Kota Bengkulu	2	11	109	864	2106	0	13	9	0	0	4
Bengkulu Utara	4	15	1462	2017	2316	0	134	224	0	0	1
Muko-Muko	7	0	2254	1643	1146	0	112	0	30	60	0
Kepahyang	0	0	0	0	5	0	0	0	0	0	0
Lebong	0	0	0	0	0	1	3	1	0	0	0
Seluma	0	0	5	70	73	0	0	0	0	0	0
<b>TOTAL</b>	<b>13</b>	<b>26</b>	<b>3830</b>	<b>4594</b>	<b>5646</b>	<b>1</b>	<b>262</b>	<b>234</b>	<b>30</b>	<b>60</b>	<b>5</b>

<sup>1</sup> Source: Satkorlak, data per 15 September 2007

Other statistics record that in West Sumatera, eight people have been killed, 20 severely injured and 31 sustained minor injuries. A total of 12,581 houses have been damaged including 6,039 houses severely destroyed, most of which are in the district of Pesisir Selatan in the southern part of West Sumatera. A total of 42 schools have also been damaged in the series of aftershocks. There has also been damage to health facilities such as the Mayjen H.A Thalib hospital of Jambi province and the H. Jamil hospital in Padang province as well as five public health centres (pusat kesehatan masyarakat/Puskesmas). A total of 12 supporting public health centres (pusat kesehatan masyarakat pembantu/Pustu) were damaged<sup>2</sup>. These damages are in addition to the M. Yunus state hospital in Bengkulu province and the Ibnu Sina hospital in Padang, West Sumatera as reported in the previous bulletin.

Most of the communities who fled their homes have returned and set up tents and tarpaulins in front of their houses in order to keep an eye on belongings left behind. They have also started to clean up the rubble to minimize risk while staying in close proximity to their damaged homes.

According to the Satkorlak, the most urgent needs are mainly temporary shelters for schools and households. Mobile health services in remote areas are also a priority.

The ministry of health has deployed three ambulance teams and one surgical team from Jakarta with one ambulance unit. Additionally, they have deployed 22 medical doctors, 39 nurses and four personnel for rapid health assessment. They are planning to send two mobile clinics and medicines. It has been reported that the government of Indonesia will provide IDR 15 million (CHF 1,908 or USD 1,603 or EUR 1,156) to each family who has suffered the most severe damage to their homes.

## Red Cross and Red Crescent action

The Indonesian Red Cross (Palang Merah Indonesia/PMI) has mobilized staff and volunteers for assessments and operations in Bengkulu and West Sumatera. In Bengkulu, PMI aims to cover 30 per cent of household shelter needs by providing about 5,000 tarpaulins and 250 family tents. A total of 2,000 tarpaulins have already been delivered to branches for distribution, and 3,000 are currently in the pipeline from Jakarta. Family tents will also be sent to Seluma.

A PMI mobile medical team visited different households and communities to provide services in Bengkulu Utara. The team moved to Muku-Muku on the morning of 17 September. Joining the medical team in Muku-Muku is a PMI water and sanitation team also carrying out assessment. In addition, an assessment for a psycho-social support programme (PSP) is underway, and the Danish Red Cross will also send a psychologist to support the PMI PSP team.

In response to PMI chapter operations, the headquarters has dispatched many relief items to Bengkulu from its central and regional warehouses. Total relief items sent to Bengkulu are as below.



*Indonesia Red Cross workers rush a wounded man to hospital following the powerful earthquake which hit near the Sumateran city of Bengkulu on Thursday."*

Relief Items	Unit	Qty	Note
Tarpaulins	pcs	5,150	150 tarpaulins from Padang regional warehouse
Family Tents	pcs	250	
Mosquito Nets	pcs	450	
Hygiene Kits	kit	1,500	Contents include shampoo, towels, toothpaste, toothbrush, body soap, laundry soap.
Family Kits	kit	150	Contents include cooking pot, jerry can, shampoo, sleeping mat, towels, toothpaste, toothbrush, body soap, laundry soap, spoons,

<sup>2</sup> Source: Satkorlak, data per 15 September 2007.

			sarong, plastic plates, plastic cups, candles and matches.
Kerosene Lamps	pcs	500	
Mattresses	pcs	500	
Medicines and First Aid Items	package	1	for 1,000 recipients

In Padang, West Sumatera, 500 hygiene kits and 500 tarpaulins have already been distributed in Pesisir Selatan. Furthermore, the PMI chapter plans to distribute 100 family kits, 800 blankets and 800 hygiene kits on 17 September. From the Jakarta central warehouse, 1,000 tarpaulins were sent to Padang over the previous weekend.

The PMI secretary general paid a visit to Bengkulu on 16-17 September to support operations, accompanied by the Federation disaster management coordinator and the Danish Red Cross country representative.

Partner national societies (PNS) continuously express their interest of support by making provision for further possible assistance. The Netherlands Red Cross has also sent delegates and staff to Bengkulu and Padang to carry out assessments.

The Federation is closely working with PMI in operations and has deployed two disaster management specialists to Bengkulu for technical support. One information officer is currently collecting human interest stories from earthquake survivors.

*[Map attached below; click here to return to title page.](#)*

## How we work

All International Federation assistance seeks to adhere to the [Code of Conduct for the International Red Cross and Red Crescent Movement and Non-Governmental Organizations \(NGOs\) in Disaster Relief](#) and is committed to the [Humanitarian Charter and Minimum Standards in Disaster Response \(Sphere\)](#) in delivering assistance to the most vulnerable.

### The Federation's Global Agenda

The International Federation's activities are aligned with under a Global Agenda, which sets out **four broad goals** to meet the Federation's mission to "improve the lives of vulnerable people by mobilizing the power of humanity".

### Global Agenda Goals:

- Reduce the numbers of deaths, injuries and impact from disasters.
- Reduce the number of deaths, illnesses and impact from diseases and public health emergencies.
- Increase local community, civil society and Red Cross Red Crescent capacity to address the most urgent situations of vulnerability.
- Reduce intolerance, discrimination and social exclusion and promote respect for diversity and human dignity.

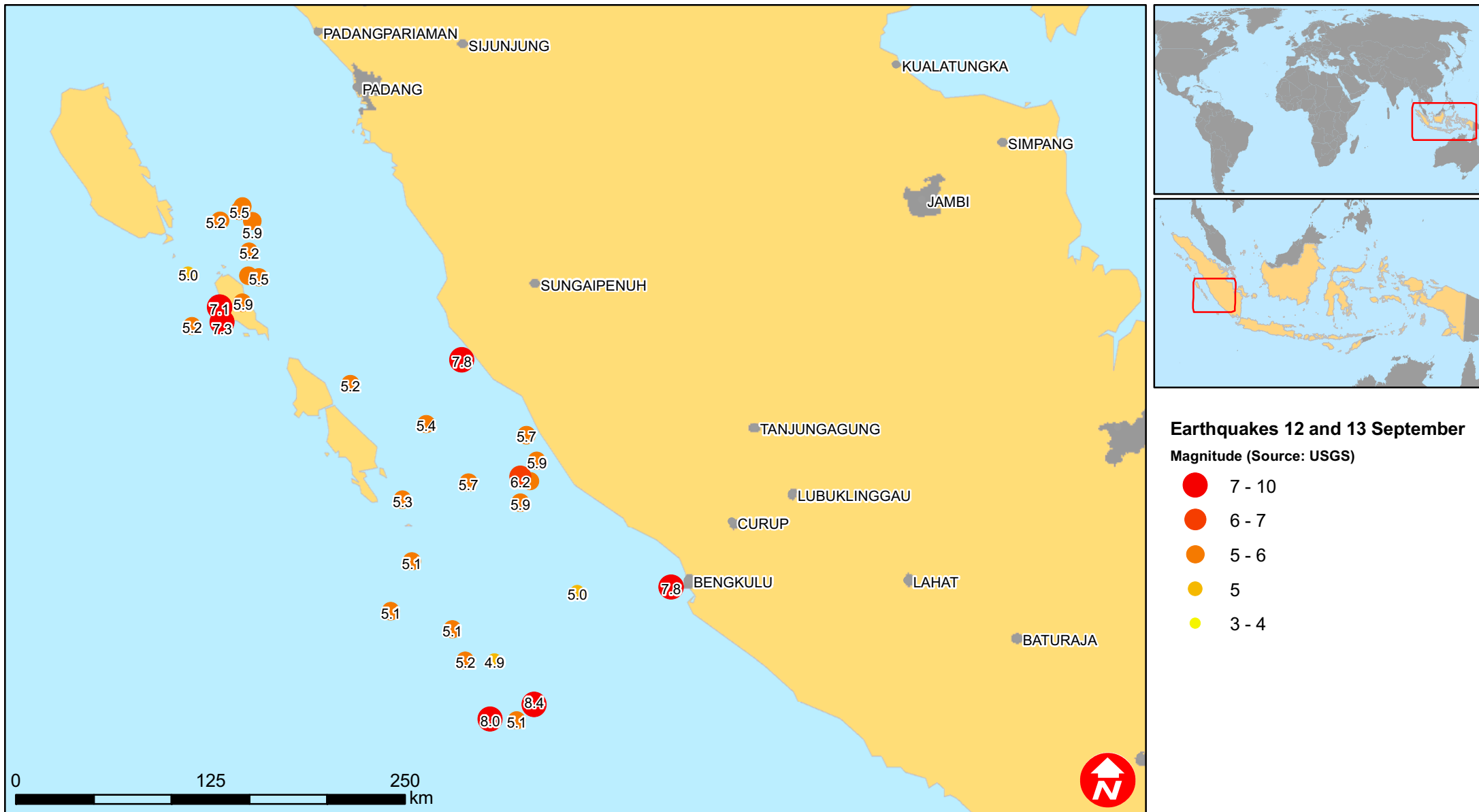
## Contact information

### For further information specifically related to this operation please contact:

- *Indonesian Red Cross (PMI):* Arifin M. Hadi (Acting Head of Disaster Management Division); [arifinmhd@telkom.net](mailto:arifinmhd@telkom.net); mobile: +62.811.943.952; phone: +62.21.7992325 ext. 222.; fax: +62.21.7995188
- *Federation Delegation in Indonesia:* Bob McKerrow (Head of Delegation); email: [bob.mckerrow@ifrc.org](mailto:bob.mckerrow@ifrc.org); phone: +62.21.7919.1841 (ext. 104); fax: +62.21.7918.0905;
- *Federation Southeast Asia regional delegation in Thailand:* Alan Bradbury (acting regional representative); email: [alan.bradbury@ifrc.org](mailto:alan.bradbury@ifrc.org); phone: +66.2.661.8201 ext 100.
- *Federation Secretariat in Geneva (Asia Pacific Department):* Josse Gillijns (regional officer); email: [josse.gillijns@ifrc.org](mailto:josse.gillijns@ifrc.org); phone: +41.22.730.4224; fax: +41.22.7330395 or Priya Nair; email: [priya.nair@ifrc.org](mailto:priya.nair@ifrc.org); phone: +41.22.730.4296
- *Asia Pacific Zone in Kuala Lumpur:* Ms Amy Gaver, email: [amy.gaver@ifrc.org](mailto:amy.gaver@ifrc.org), phone: + 60 3 2161 0892, fax: +60 3 2161 1210, mobile +60 12 220 1174



# Indonesia: Earthquakes



The maps used do not imply the expression of any opinion on the part of the International Federation of the Red Cross and Red Crescent Societies or National Societies concerning the legal status of a territory or of its authorities.

Map data sources: ESRI, DEVINFO, USGS, Federation