

INFORMATION BULLETIN



International Federation of Red Cross and Red Crescent Societies
Fédération internationale des Sociétés de la Croix-Rouge et du Croissant-Rouge
Federación Internacional de Sociedades de la Cruz Roja y de la Media Luna Roja
الاتحاد الدولي لجمعيات الصليب الأحمر والهلال الأحمر

INDONESIA: BENGKULU EARTHQUAKE

Information Bulletin
no. 3/2007
21 September 2007
[Glide number](#)
[EQ-2007-000157-IDN](#)

The Federation's mission is to improve the lives of vulnerable people by mobilizing the power of humanity. It is the world's largest humanitarian organization and its millions of volunteers are active in 185 countries.

In Brief

This Bulletin is being issued for information only, and reflects the situation and the information available at this time. The Federation is not seeking funding or other assistance from donors for this operation at this time.

The Situation

Several earthquakes measuring 6.7 to 8.4 on Richter scale struck the west coast of Indonesia's Sumatera Island near Bengkulu on Wednesday, 12 September 2007 as recorded by the United States Geological Survey (USGS). Up to 40 aftershocks measuring 4.5 to 6.9 on the Richter scale have been reported by Meteorology and Geophysics Agency (Badan Meteorologi dan Geofisika/BMG) with tremors felt in remote areas.

[Click here for a map of the area](#)

The government disaster coordination units (Satuan Koordinasi Pelaksana Penanganan Bencana/Satkorlak) in Bengkulu and West Sumatera reported on Wednesday, 19 September that 27,834 houses and 19,506 houses have been damaged in Bengkulu and West Sumatera respectively. About 28 per cent (7,905 houses) of the 27,834 houses in Bengkulu are considered severely damaged or totally collapsed, while the number of casualties still remains relatively low at 15 people in Bengkulu and ten in West Sumatera.

Despite the substantial damage to public facilities, it has been reported that the community's activities in general are not significantly affected. Road conditions to and from Bengkulu are relatively passable. Public facilities such as hospitals, schools and religious establishments are still functional although damaged. The PMI (Palang Merah Indonesia/Indonesian Red Cross) assessment has reported that the community still has reasonable access to water and sanitation as the infrastructure is intact and functional. The power supply network has mostly been restored except for the Muko-muko district. Nevertheless, due to trauma caused by the earthquake, PMI reported that parents are preventing their children from going back to school, especially in Bengkulu Utara which is one of the most affected areas.

As reported in the previous Information Bulletin, the Indonesian Government is providing IDR 15 million (equivalent to CHF 1,908 or USD 1,603 or EUR 1,156) to each family whose houses have been most severely damaged. In addition to that, the government has distributed relief items such as tents and tarpaulins as well as clothing and blankets to the affected communities. Through Satkorlak, the government has also distributed food items including instant noodles, canned food, and drinking water. The Bengkulu branch of PT Excelcomindo, a private telecommunications company has provided the affected communities with telephony facilities.

The ministry of health in cooperation with the disaster preparedness brigade is providing health services in some sub-districts such as Lais, Arga Makmur and the Muko-Muko district.

Red Cross Red Crescent action

In their plan of action, PMI has identified the immediate need for temporary shelters and mobile medical services. As such, PMI is now focusing on the distribution of tents, tarpaulins and other essential items, which will enable families to set up temporary shelters. The target population of their operation are located in five districts in Bengkulu province, namely Bengkulu Utara, Muko-Muko, Seluma, Kepahiang and the Bengkulu municipality. The operation also includes deployment of medical action teams from South Sumatera and Riau provinces to provide medical services for free, including medicine through mobile clinics.

The PMI headquarters has mobilized and dispatched tarpaulins, platoon and family tents, mosquito nets, hygiene kits, family kits, kerosene lamps, sleeping mats, blankets and medicines from central and regional warehouses to Bengkulu and West Sumatera. The PMI volunteers are in the process of distributing these items to the most affected communities. By 20 September, PMI staff and volunteers distributed relief items as detailed below:

ITEMS DISTRIBUTED	BENGKULU					TOTAL
	Kota Bengkulu	Bengkulu Utara	Muko-Muko	Kepahyang	Seluma	
Tarpaulin	34	1197	806	60	70	2167
Hygiene Kit	76	201	259	60	70	666
Mosquito Net	10		150			160
Family Kit			150			150
Hurricane Lamp	2	242	252			496
Medicine (package)		300	700			1000
Platoon Tent			2			2
Family tent			10			10

ITEMS DISTRIBUTED	WEST SUMATERA			TOTAL
	Pesisir Selatan	Kota Padang	Mentawai*	
Tarpaulin	1000	75	500	1575
Hygiene Kit		1000	500	1500
Mosquito Net		10		10
Blanket	500		500	1000

* Joint operation with SurfAid International. Items are on the way to Mentawai.



PMI Volunteers distribute relief items to beneficiaries of Lais sub district of Bengkulu Utara district. International Federation/Vina Agustina

PMI is now collaborating with SurfAid International serving the affected population on the Mentawai islands by providing tarpaulins, hygiene kits and blankets from the PMI Padang regional warehouse. There is a ferry that is scheduled to depart for the islands on Friday, 21 September, and several PMI volunteers will join the SurfAid International team to distribute these relief items.

Using emergency funds provided by AusAID, the Federation's Indonesia delegation is covering most of operational costs, while the PMI headquarters is also mobilizing its own contingency funding. Some partner national societies (PNS) are making concrete contributions bilaterally. Danish Red Cross, together with the Royal Danish Embassy, has made a provision of USD 100,000 (CHF 117,722 or EUR 71,330) to cover approximately 3,500 tarpaulins and related operational costs. In addition, the German and the Netherlands Red Cross are under discussions with PMI for possible support. With the consent of PMI, the ICRC has also shared its relief items with Médecins Sans Frontières (MSF) in Bengkulu for urgent distribution.

The PMI has launched a psycho-social support programme (PSP) and the team has already begun carrying out rehabilitation services, mainly around primary schools in the Bengkulu province. To date, about 1,500 students in five schools in the sub-district of Lais in Bengkulu Utara district have been identified for PSP services. PSP activities will continue for several weeks and possibly, months, and will be supported by the Danish Red Cross.

[Map attached below; click here to return to the title page](#)

How we work

All International Federation assistance seeks to adhere to the [Code of Conduct for the International Red Cross and Red Crescent Movement and Non-Governmental Organizations \(NGOs\) in Disaster Relief](#) and is committed to the [Humanitarian Charter and Minimum Standards in Disaster Response \(Sphere\)](#) in delivering assistance to the most vulnerable.

The Federation's Global Agenda

The International Federation's activities are aligned with under a Global Agenda, which sets out **four broad goals** to meet the Federation's mission to "improve the lives of vulnerable people by mobilizing the power of humanity".

Global Agenda Goals:

- Reduce the numbers of deaths, injuries and impact from disasters.
- Reduce the number of deaths, illnesses and impact from diseases and public health emergencies.
- Increase local community, civil society and Red Cross Red Crescent capacity to address the most urgent situations of vulnerability.
- Reduce intolerance, discrimination and social exclusion and promote respect for diversity and human dignity.

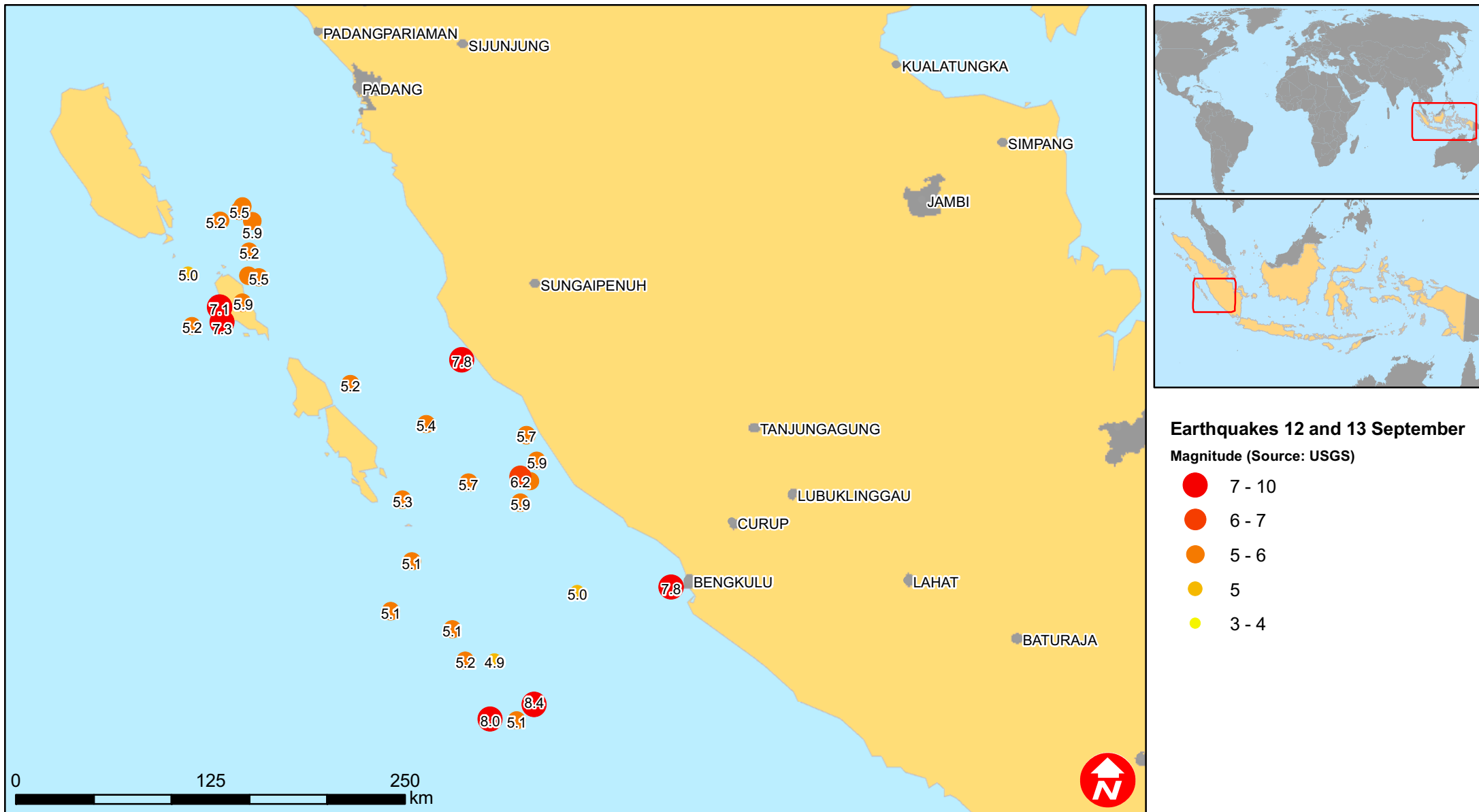
Contact information

For further information specifically related to this operation please contact:

- *Indonesian Red Cross (PMI): Arifin M. Hadi (Acting Head of Disaster Management Division); arifinmhd@telkom.net; mobile: +62.811.943.952; phone: +62.21.7992325 ext. 222.; fax: +62.21.7995188*
- *Federation Delegation in Indonesia: Bob McKerrow (Head of Delegation); email: bob.mckerrow@ifrc.org; phone: +62.21.7919.1841 (ext. 104); fax: +62.21.7918.0905;*
- *Federation Secretariat in Geneva (Asia Pacific Department): Josse Gillijns (regional officer); email: josse.gillijns@ifrc.org; phone: +41.22.730.4224; fax: +41.22.7330395 or Priya Nair; email: priya.nair@ifrc.org; phone: +41.22.730.4296*
- *Asia Pacific Zone in Kuala Lumpur: Ms Amy Gaver, email: amy.gaver@ifrc.org phone: + 60 3 2161 0892, fax: +60 3 2161 1210, mobile +60 12 220 1174*



Indonesia: Earthquakes



The maps used do not imply the expression of any opinion on the part of the International Federation of the Red Cross and Red Crescent Societies or National Societies concerning the legal status of a territory or of its authorities.

Map data sources: ESRI, DEVINFO, USGS, Federation