

# Information bulletin



International Federation  
of Red Cross and Red Crescent Societies

## Republic of Congo (Brazzaville): Cholera outbreak

Information bulletin n° 01  
GLIDE EP-2008-000100-COG  
1 July, 2008

This bulletin is being issued for information only, and reflects the current situation and details available at this time. The Congolese Red Cross Society, with the support of the Federation, has determined that external assistance is not required, and is therefore not seeking funding or other assistance from donors at this time.

A cholera outbreak is currently hitting the Loudima district, in the Bouenza division which is located 375 km South-East of Brazzaville, the capital of the Republic of Congo. A first outbreak occurred in the same locality early this year and 527 cases and 25 deaths were registered. The situation was under control and there was no longer cause for alarm. However, 78 new cases and one death have been registered in Loudima since 5 June, 2008. In addition, 18 cases have been registered within the same period in the Moundi village located about 50 km from Loudima. This brought the total of new cholera cases to 96 and one death as of 20 June, 2008. Seven new cases were registered as of 25 June 2008, on the basis of two in Loudima and five in the Mouindi village, bringing the total number of cases to date to 103 in the affected localities. So far, Congolese Red Cross volunteers have been conducting an information, education and communication campaign to help stop the propagation of the epidemic. The Congolese Red Cross is currently preparing a plan of action for proper response to the epidemic in the days ahead.



Congolese Red Cross volunteers have been conducting IEC campaigns

[<click here to view the map of the affected area, or here for detailed contact information>](#)

### The Situation

A cholera outbreak is currently hitting the Loudima district, in the Bouenza division which is located 375 km south-east of Brazzaville, the capital of the Republic of Congo. The health history of the division shows episodes of bilharziasis and other current diseases like malaria, meningitis and scabies. The Loudima district, which is the epicentre of the epidemic, is located at about 60 km from the chief place of the Bouenza division, 20 km from the Nkayi council and about 20 km from Mont-Belo, an important road station linking the town of Dolisie to Mbinda, in the Niari division.

This is the second time the cholera outbreak is occurring in the same locality in half of 2008. Some 527 cases and 25 deaths were registered during the first outbreak that occurred in February 2008 in the Louetete and Loudima districts. The disease reached the Mouindi village on 5 June, 2008 affecting about 18 persons, in the locality situated 50 km from Loudima; 78 cases and one death have so far been registered in Loudima, bringing the total number of cases to 96 and one death from 5 to 20 June, 2008. The epidemiological bulletin on the cholera epidemic in the Bouenza division, published by the disease control department on 25 June in Brazzaville, revealed that two new cases have been referred to the Loudima hospital. On the same day, five new cases were registered in the Mouindi village, one of which was admitted at the local hospital and four are being treated at home.

## Red Cross and Red Crescent action

So far, Congolese Red Cross volunteers have been conducting an information, education and communication campaign to help stop the propagation of the epidemic. They are also involved in home follow-up activities and epidemiological surveillance, especially in Loudima and Mouindi. The Red Cross has also been joining efforts with Government to mobilize relief teams, take care of affected persons, sensitize the communities on a door-to-door basis, and carry out hygiene and sanitation activities.

Mindful of the seriousness of the situation, the Secretariat general of the Congolese Red Cross has been maintaining permanent contact with the technical services of the Health Ministry and the Divisional Council of the Red Cross.

Taking into consideration the evolution of the epidemic, the national society is currently preparing a plan of action for proper emergency response in favour of victims and vulnerable communities in the Bouenza division in order to avoid the propagation of cholera in the neighbouring villages and divisions.

### How we work

*All International Federation assistance seeks to adhere to the [Code of Conduct for the International Red Cross and Red Crescent Movement and Non-Governmental Organizations \(NGO's\) in Disaster Relief](#) and is committed to the [Humanitarian Charter and Minimum Standards in Disaster Response \(Sphere\)](#) in delivering assistance to the most vulnerable.*

The International Federation's activities are aligned with its Global Agenda, which sets out four broad goals to meet the Federation's mission to "improve the lives of vulnerable people by mobilizing the power of humanity".

#### Global Agenda Goals:

- Reduce the numbers of deaths, injuries and impact from disasters.
- Reduce the number of deaths, illnesses and impact from diseases and public health emergencies.
- Increase local community, civil society and Red Cross Red Crescent capacity to address the most urgent situations of vulnerability.
- Reduce intolerance, discrimination and social exclusion and promote respect for diversity and human dignity.

### Contact information

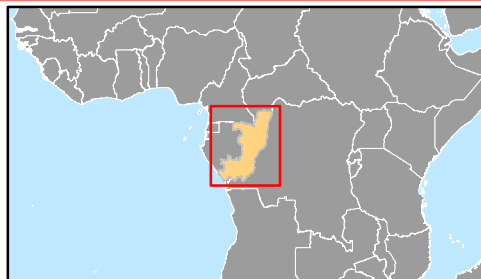
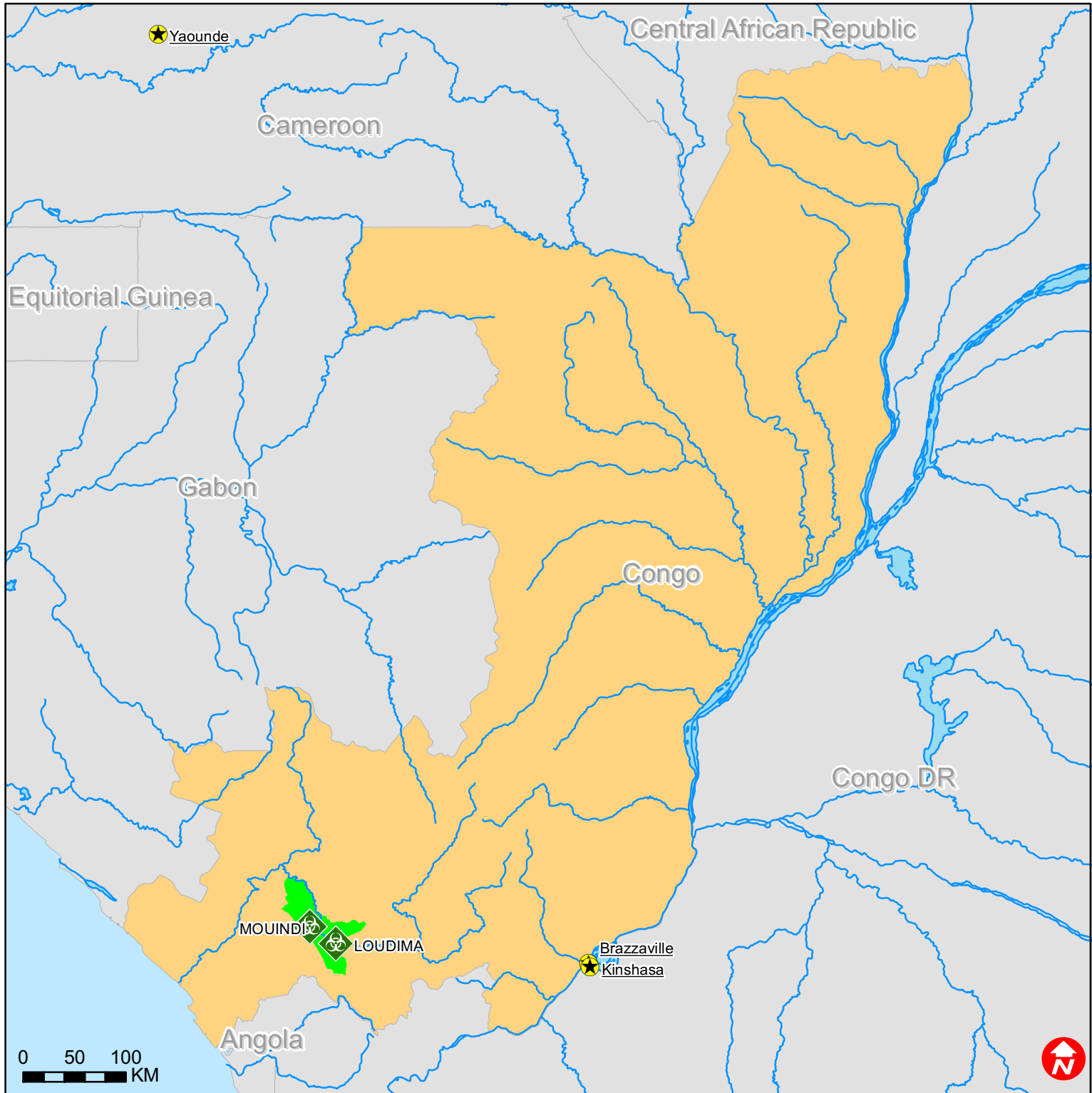
**For further information specifically related to this operation please contact:**



- In **Congo Brazzaville**: Christian Ndinga, President, Congolese Red Cross, Brazzaville; Tel:+242.662 03 11
- In **Cameroon**: Javier MEDRANO, Federation Regional Representative for Central Africa, Yaoundé, email: [javier.medrano@ifrc.org](mailto:javier.medrano@ifrc.org), Phone: (237) 22 21 74 37 OR (237) 96 29 87 89, Fax: (237) 22 21 74 39
- In **Senegal**: Alasan SENGHORE, Federation Head of West and Central Africa Zone Office, Dakar, Senegal, email: [alasan.senghore@ifrc.org](mailto:alasan.senghore@ifrc.org) , Phone: (221) 869 3641, Fax: (221) 22 860 2002; Norbert Allale, DM delegate response; Phone: (221) 77 529 73 38, email: [norbert.allale@ifrc.org](mailto:norbert.allale@ifrc.org)

[<map below; click here to return to the title page or contact information](#)



# Congo: Epidemic



-  Cholera outbreaks
-  Affected district (Loudima)