


www.ifrc.org  
Saving lives,  
changing minds.

# Disaster relief emergency fund (DREF) Burundi: Cholera

 International Federation  
of Red Cross and Red Crescent Societies

**DREF operation n°MDRBI009**  
**GLIDE n°EP-2012-000187-BDI**  
**4 December, 2012**

The International Federation of Red Cross and Red Crescent (IFRC) Disaster Relief Emergency Fund (DREF) is a source of un-earmarked money created by the Federation in 1985 to ensure that immediate financial support is available for Red Cross and Red Crescent emergency response. The DREF is a vital part of the International Federation's disaster response system and increases the ability of National Societies to respond to disasters.

**CHF 88,655 has been allocated from the IFRC's Disaster Relief Emergency Fund (DREF) to replenish and refund the National Society in delivering immediate assistance to some 14,000 beneficiaries in 7 districts affected by the cholera outbreak. Unearmarked funds to repay DREF are encouraged.**

**Summary:** Beginning 30 September 2012, cases of diarrheal disease were reported in Bujumbura Town and Bujumbura Rural in Burundi. Three days later, the National Laboratory confirmed a cholera outbreak and the Minister of Health declared it a national disaster. An assessment carried out by Burundi Red Cross Society (BRCS) in coordination with other partners indicated that a total of 7 districts in 6 provinces were affected. These districts are Rugombo, Mpanda, Kabezi, Bujumbura Town, Rumonge, Makamba and Nyanza-Lac.



**Volunteers conducting vector control during house-to-house visits. Photo/Burundi Red Cross Society**

Since the onset of the cholera outbreak, the National Society has been responding using a pre-positioned WatSan kit 5 and WatSan trained staff providing safe drinking water, non food items (NFI) and hygiene promotion messages. While the National Society has been able to respond so far using its own resources, the WatSan kit 5 now needs replenishment and additional NFI stocks are required to assist the increasing number of families affected by the cholera outbreak.

During the response, Burundi Red Cross initially mobilized 70 volunteers and has now scaled down to 20 volunteers for completion of the activities. So far, about three quarters of the targeted 2,800 families have been reached by Burundi Red Cross. Districts that have so far been declared free of cholera (no new cases over the last ten days) include Mpanda, Rugombo, Kabei and Makamba. Efforts of the National Society and of other partners are now focused on the districts of urban Bujumbura, Nyanza Lac and Rumonge.

This operation was carried over a period of three months (October - December, 2012) and will therefore be completed by 31 December 2012. A Final Report will be made available three months after the end of

the operation (by 31 March 2013).

[<click here for the DREF budget; here for contact details; here to view the map of the affected area>](#)

## The situation

The cholera outbreak in the country was confirmed on 3 October 2012. In general, cholera is endemic in Burundi and reoccurs at the onset of each rainy season. In the present situation, the cholera cases increased mainly because the rainy season started very early and to date, 180 cases have been reported over a period of 6 weeks, including 1 death. The situation became exacerbated in the affected districts because of lack of safe drinking water and unhygienic latrines. In addition, due to the prolonged dry season, the level of water in the different sources is very low specifically in Bujumbura Rural. In Nyanza-Lac the water infrastructures needed to be rehabilitated and the Government of Burundi decommissioned the former small water tank which had a capacity of 50m<sup>3</sup> which was providing water to the community. It was done to pave way for the installation of a larger water tank with a larger capacity which led to the short supply of safe drinking water.

**Table 1: Reported cholera cases as of 28 November, 2012**

District	New Cases	Cumulative Cases	Hospitalized	Deaths
Bujumbura	11	81	1	0
Bujumbura Rural-Kabezi	0	25	0	0
Nyanza-lac ( Makamba Province)	9	61	0	0
Makamba	0	22	0	1
Cibitoke	1	8	1	0
Mpanda ( Bubanza Province)	0	9	0	0
Rumonge (Bururi Province)	6	42	2	
<b>Total</b>	<b>27</b>	<b>248</b>	<b>4</b>	<b>1</b>

Source: Ministry of Health November 2012

## Coordination and partnerships

Nationally response activities are being coordinated by the Director General of Ministry of Health and the Health Emergency Director. In the provinces, the Provincial Health Director is working closely with Burundi Red Cross branch Coordinators, local government representatives and Civil Protection. Other partners include UN agencies such as the World Health Organization (WHO), the United Nations Children's Fund (UNICEF) and Medecins sans Frontieres (MSF).

Burundi Red Cross and UNICEF's Burundi office have a Memorandum of Understanding (MoU) that guides their coordination efforts during response to disasters. In this regard, UNICEF has provided 2 trucks and 6 water bladders while the National Society has provided 2 trucks for water trucking in Bujumbura Rural and Makamba District.

The IFRC East Africa Regional Representation has provided a WatSan Kit 5, which was used in the initial response and has enabled distribution of soap, jerry cans and aqua tabs. Burundi Red Cross Action Teams (RCAT) are spraying chlorine in the areas where cholera cases have been detected and in the treatment centers. Burundi Red Cross and Civil Protection are providing safe water through water trucking.

The National Society will maintain regular contact with the East Africa Regional Representation to ensure proper coordination of cholera activities. In addition, the National Society will coordinate with the Ministry of Health, MSF and WHO on matters related to disease outbreaks.

## Red Cross and Red Crescent action

The National Society Disaster Management Department, in collaboration disaster management teams in the affected communes mobilized the Red Cross Action Teams made of 70 volunteers to conduct a rapid assessment of the situation in all the areas. Two National Disaster Response Team (NDRT) members trained in WatSan were deployed from the headquarters to the affected areas since the outbreak. The team is working in coordination with the Ministry of Health, Civil Protection, and local administration authorities to identify the most affected households. Red Cross volunteers have been mobilized to disseminate hygiene

messages, conduct disinfection of areas accessed by persons infected as well as the cholera treatment centers (CTC). They are also involved in water trucking.

A WatSan Kit 5 has been deployed along with 2 trained National Disaster Response Team members. The WatSan Kit deployed is mostly used for water trucking which comprises of 10 cubic meter bladders. The Daily situation monitoring is being carried out by the Red Cross Action Teams who keep district medical authorities informed of new cases detected. In Bujumbura town, Red Cross volunteers are coordinating with Civil Protection to transport any new cases to the cholera treatment centers

Furthermore, BRCS has distributed non food items to those affected across 7 districts from the National Society prepositioned stocks at the headquarters and regional warehouses

**Table 2: Non food items distributed to the beneficiaries**

Item	Quantity
Aqua tabs	54,730
Jerry cans	966
Soap bars	1,920
Backpack sprayers	15

From the materials distributed 2 backpack sprayers are used in ambulances manned by the Civil Protection personnel when they transfer patients from the communes to the cholera treatment centers.

## The needs

Burundi Red Cross Action Teams carried out a rapid assessment and identified non-food items (NFIs) as the most immediate needs. These include disinfection products (granular chlorine), aqua tabs and equipment such as backpack sprayers, boots and gloves. There is also need for dissemination of hygiene promotion messages to prevent further cholera spread.

The DREF support will enable the National Society to provide immediate assistance to 14,000 vulnerable people (2,800 households) from Rugombo, Mpanda, Bujumbura Town, Kabezi, Rumonge, Nyanza-Lac and Makamba districts. Burundi Red Cross in the response operation plans to:

- Procure and distribute 1,400 jerry cans (1 per households).An additional 1,400 jerry cans have been provided by UNICEF, Watsan Kit 5 and ICRC.
- Distribute 14,000 aqua tabs “strips” (5 tablets per household)<sup>1</sup>
- Procure and distribute 11,200 pieces of soaps (4 pieces per HH of pieces of 100 grams)
- Procure and distribute 14 chlorine granular cans (2 per district)
- Procure and distribute 35 backpack sprayers (5 per district) in 7 districts
- Procure and distribute protective clothes (20 per district)
- Procure and distribute 140 protective gloves (20 per district)
- Procure and distribute 140 goggles’ (20 per district), 70 boots (10 per district)
- Procure and distribute 280 masks (40 per district)
- Procure and distribute 7 dosage kits (1 per district)
- Procure and distribute 7megaphones (1 per district)
- Replenish the WatSan Kit 5

Currently, all community kits and 75 per cent of the individual beneficiary relief items (aqua tabs, jerry cans, and soap) have been distributed.

## The proposed operation

### Water and Sanitation

**Outcome: The immediate risks to the health of 14,000 cholera-affected people (2,800 households) in 7 districts are reduced by ensuring access to safe drinking water, adequate sanitation and hygiene supplies.**

**Outputs (expected results):**

**Activities planned:**

<sup>1</sup> The calculation of the number of aqua tabs required is based on SPHERE standards, and takes into account the daily requirement per person for three months, less the stock in the Kit 5 and the UNICEF contribution of 320,000 aqua tabs.

<ul style="list-style-type: none"> <li>Targeted people have access to safe water that meets the minimum SPHERE and WHO standards in terms of quantity and quality</li> </ul>	<ul style="list-style-type: none"> <li>Identification of the most vulnerable households</li> <li>Mobilize volunteers to distribute hygiene kits in the 7 affected districts</li> <li>Procure and transport 5,600 jerry cans, water purification 56,000 Aqua tablets, 22,400 bars of soap (800 g per household of pieces of 100grs) and 18 (45 kg) chlorine granular cans.</li> <li>Trained BRCS volunteers conduct hygiene promotion campaigns during and after the distribution of NFI.</li> <li>Mobilize BRCS volunteers for NFI distribution</li> <li>Distribute NFIs</li> <li>Organize post distribution monitoring on how items are used</li> <li>Replenishment of WatSan Kit 5 items</li> </ul>
--	---

### Emergency Health

**Outcome: Reduced morbidity and mortality among 14,000 people (2,800 families) through hygiene promotion and disinfection activities, ensuring early case detection and community case management in 7 districts (2,000 people estimated per district).**

<p><b>Outputs (expected results):</b></p> <ul style="list-style-type: none"> <li>The Red Cross Action Team and volunteers have the necessary capacity to respond to the cholera outbreak as well as prevent further outbreaks</li> <li>2,800 families have increased their knowledge on proper hygiene practices necessary to prevent further spread of cholera in their communities</li> <li>70 volunteers (10 per district) are enabled to conduct early case detection and community case management</li> <li>2,800 houses and districts sanitation facilities are being disinfected to disrupt the chain of contamination at household level</li> </ul>	<p><b>Activities planned:</b></p> <ul style="list-style-type: none"> <li>Organize training on cholera outbreak management utilizing the epidemic control manual for volunteers and PHASTER approach for 70 volunteers, in coordination with the MoH, using IFRC manuals</li> <li>Procure chlorine solution, 70 backpack sack sprayers, 140 protective goggles, 70 pairs of boots, 140 pieces of protective clothing, 140 pairs of gloves, 280 face masks, 14 kits for chlorine dosages as well as 14 megaphones for facilitating hygiene promotion</li> <li>Conduct house to house visits</li> <li>Conduct community hygiene promotion sessions during public events on market days and other occasions</li> <li>Conduct disinfection visits in the target communities</li> </ul>
---	---

### Monitoring and Evaluation

**Outcome: The management of the operation is informed by a comprehensive monitoring and evaluation system**

<p><b>Outputs (expected results):</b></p> <ul style="list-style-type: none"> <li>BRCS staff and volunteers provide regular monitoring reports of the operation</li> <li>The cholera intervention is evaluated critically, challenges are reviewed and lessons learned process is ensured.</li> </ul>	<p><b>Activities planned:</b></p> <ul style="list-style-type: none"> <li>Conduct regular monitoring activities in the field by volunteers as well as PMER and senior staff</li> <li>Produce and present a final report and highlight achievements and lessons learnt.</li> <li>Conduct an evaluation workshop through the support of an evaluator to extract lessons learned</li> <li>Produce an end of operation report outlining achievements and lessons learned that can be utilized as a reference point for improved emergency planning and implementation for future emergencies</li> </ul>
--	--

Logistics	
<b>Outcome:</b> The local logistics capacity of Burundi RCS to respond to the cholera outbreak is strengthened through enhanced technical logistic support of the Federation's East Africa Regional Representation Office	
<b>Outputs (expected results):</b> <ul style="list-style-type: none"> <li>Enhanced logistics capacity and technical support facilitate the assistance to the 14,000 affected individuals (2,800 households) and other related activities.</li> </ul>	<b>Activities planned:</b> <ul style="list-style-type: none"> <li>Coordinate with BRCS logistics team to ensure that IFRC procurement procedures are strictly adhered to</li> <li>Support the delivery of relief items and other items dedicated to the operation</li> </ul>

## Contact information

### For further information specifically related to this operation, please contact:

- Burundi Red Cross:** Katiyunguruza Anselme, Secretary General, Phone +257.21.62.46; Fax +257 21 11 01 Email: [katiyunguruza.anselme@croixrouge.bi](mailto:katiyunguruza.anselme@croixrouge.bi)
- IFRC Regional Representation:** Finnjarle Rode, Regional Representative for East Africa; Nairobi; phone: +254 20 283 5000; email: [finnjarle.rode@ifrc.org](mailto:finnjarle.rode@ifrc.org)
- IFRC Africa Zone:** Daniel Bolaños, Disaster Management Coordinator for Africa; Nairobi; phone: +254 (0)731 067 489; email: [daniel.bolanos@ifrc.org](mailto:daniel.bolanos@ifrc.org)
- IFRC Geneva:** Christine South, Operations Quality Assurance Senior Officer; phone: +41 22 730 45 29; email: [christine.south@ifrc.org](mailto:christine.south@ifrc.org)
- IFRC Regional Logistics Unit (RLU):** Ari Mantyvaara Logistics Coordinator, Dubai; phone +971 50 4584872, Fax +971 4 883 22 12, email: [ari.mantyvaara@ifrc.org](mailto:ari.mantyvaara@ifrc.org)

### For Resource Mobilization and Pledges:

- IFRC Africa Zone:** Loïc de Bastier, Resource Mobilization Coordinator for Africa; Addis Ababa; phone: +251 93 003 4013; fax: +251 11 557 0799; email: [loic.debastier@ifrc.org](mailto:loic.debastier@ifrc.org)

### For Performance and Accountability (planning, monitoring, evaluation and reporting):

- IFRC Africa Zone:** Robert Ondrusek, PMER/QA Delegate for Africa; Nairobi; phone: +254 731 067277; email: [robert.ondrusek@ifrc.org](mailto:robert.ondrusek@ifrc.org)

## How we work

All IFRC assistance seeks to adhere to the Code of Conduct for the International Red Cross and Red Crescent Movement and Non-Governmental Organizations (NGOs) in Disaster Relief and the Humanitarian Charter and Minimum Standards in Disaster Response (Sphere) in delivering assistance to the most vulnerable.

The IFRC's vision is to inspire, encourage, facilitate and promote at all times all forms of humanitarian activities by National Societies, with a view to preventing and alleviating human suffering, and thereby contributing to the maintenance and promotion of human dignity and peace in the world.

[www.ifrc.org](http://www.ifrc.org)  
Saving lives, changing minds.



The IFRC's work is guided by Strategy 2020, which puts forward three strategic aims:

1. Save lives, protect livelihoods, and strengthen recovery from disaster and crises.
2. Enable healthy and safe living.
3. Promote social inclusion and a culture of non-violence and peace.

# DREF OPERATION

04-12-12

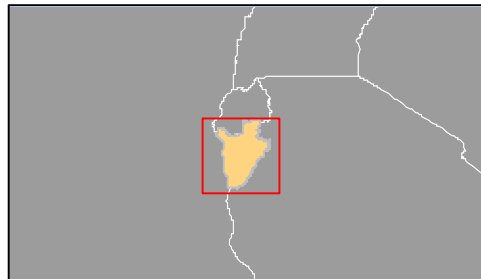
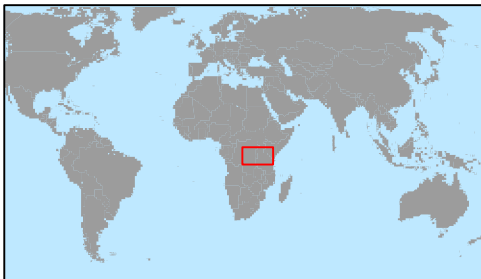
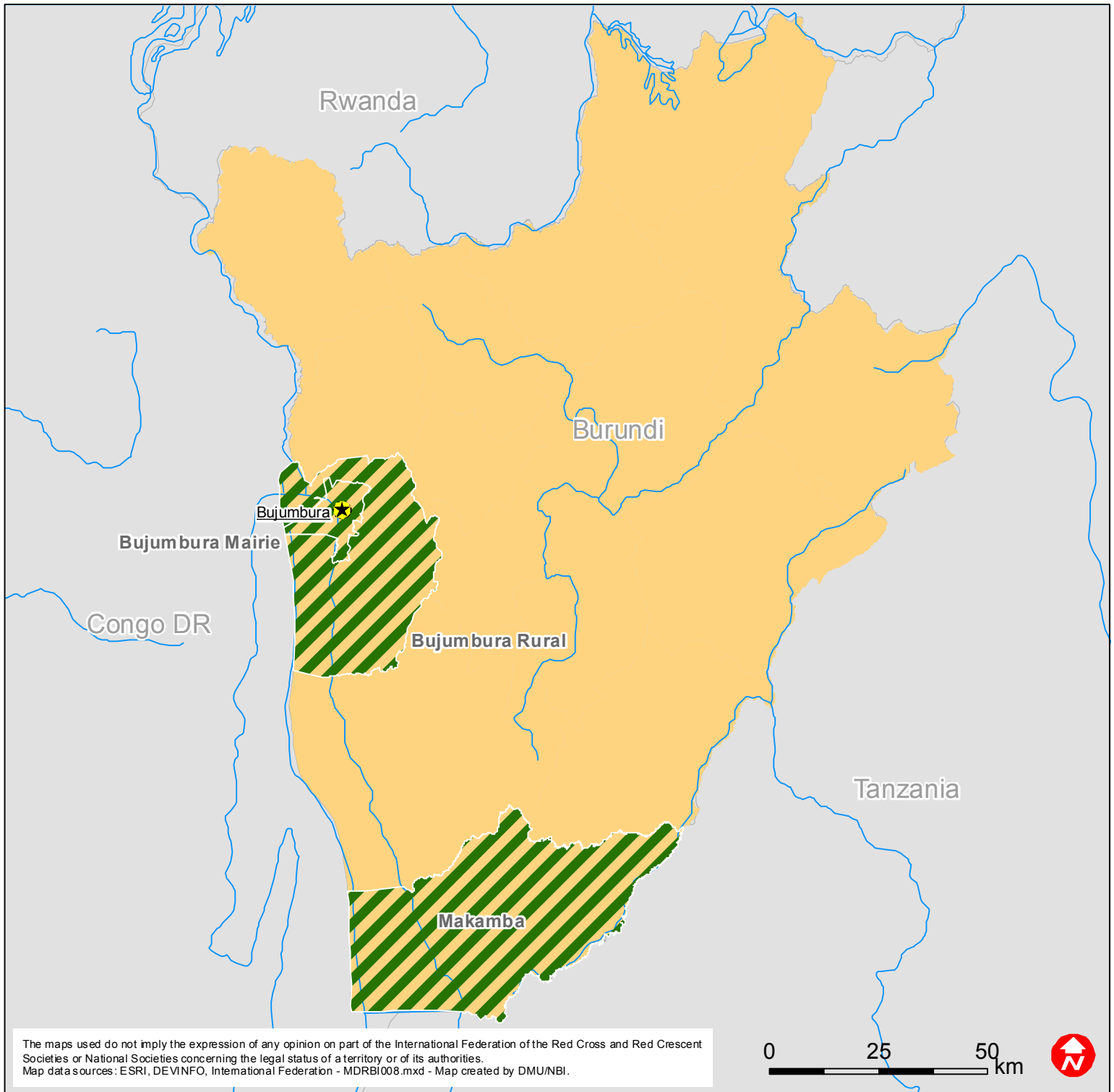
## APPEAL

## BURUNDI-CHOLERA

		DREF Grant Budget CHF
<b>Budget Group</b>		
500	Shelter - Relief	0
501	Shelter - Transitional	0
502	Construction - Housing	0
503	Construction - Facilities	0
505	Construction - Materials	1,890
510	Clothing & Textiles	0
520	Food	0
523	Seeds & Plants	0
530	Water, Sanitation & Hygiene	35,728
540	Medical & First Aid	0
550	Teaching Materials	0
560	Utensils & Tools	5,600
570	Other Supplies & Services	0
578	Cash Disbursements	0
	<b>Total RELIEF ITEMS, CONSTRUCTION AND SUPPLIES</b>	<b>43,218</b>
580	Land & Buildings	0
581	Vehicles	0
582	Computer & Telecom Equipment	0
584	Office/Household Furniture & Equipment	0
587	Medical Equipment	0
589	Other Machinery & Equipment	0
	<b>Total LAND, VEHICLES AND EQUIPMENT</b>	<b>0</b>
590	Storage, Warehousing	0
592	Distribution & Monitoring	4,200
593	Transport & Vehicle Costs	3,780
594	Logistics Services	0
	<b>Total LOGISTICS, TRANSPORT AND STORAGE</b>	<b>7,980</b>
600	International Staff	0
661	National Staff	0
662	National Society Staff	19,786
667	Volunteers	0
	<b>Total PERSONNEL</b>	<b>19,786</b>
670	Consultants	0
750	Professional Fees	0
	<b>Total CONSULTANTS &amp; PROFESSIONAL FEES</b>	<b>0</b>
680	Workshops & Training	7,147
	<b>Total WORKSHOP &amp; TRAINING</b>	<b>7,147</b>
700	Travel	1,500
710	Information & Public Relations	0
730	Office Costs	0
740	Communications	0
760	Financial Charges	0
790	Other General Expenses	3,613
799	Shared Office and Services Costs	0
	<b>Total GENERAL EXPENDITURES</b>	<b>5,113</b>
830	Partner National Societies	0
831	Other Partners (NGOs, UN, other)	0
	<b>Total TRANSFER TO PARTNERS</b>	<b>0</b>
599	Programme and Services Support Recovery	5,411
	<b>Total INDIRECT COSTS</b>	<b>5,411</b>
	<b>TOTAL BUDGET</b>	<b>88,655</b>



# Burundi: Cholera



 Affected Provinces