

www.ifrc.org
Saving lives,
changing minds.

Disaster relief emergency fund (DREF)

Benin: Floods

 International Federation
of Red Cross and Red Crescent Societies

DREF operation n° MDRBJ009
GLIDE n° FL-2012-000174-BEN
15 October 2012

The International Federation of Red Cross and Red Crescent (IFRC) Disaster Relief Emergency Fund (DREF) is a source of un-earmarked money created by the Federation in 1985 to ensure that immediate financial support is available for Red Cross and Red Crescent emergency response. The DREF is a vital part of the International Federation's disaster response system and increases the ability of National Societies to respond to disasters.

Summary: CHF 259,449 has been allocated from the IFRC's Disaster Relief Emergency Fund (DREF) to support the National Society in delivering immediate assistance to some 10'000 beneficiaries. Unearmarked funds to repay DREF are encouraged.

This operation is launched at the request of Benin Red Cross to provide assistance to 10,000 beneficiaries. The planned support is in the areas of emergency shelter, non-food items, water and sanitation, hygiene promotion and basic health interventions.

The flooding that was recently experienced in Cameroon, Chad, Nigeria and Niger has now spread to Benin where up to 50'000 people in northern and central parts of the country have been affected. River Niger broke its banks causing flooding to the entire neighbouring community. The flooded communities have suffered loss of their property, crops, farm lands, livestock and displacements from their homes. The displaced households are currently residing in schools and open-air makeshift camps. The floods were expected to subside in a few days allowing those displaced to return to their homes but heavy rains received in the flood hit areas in the first week of October has resulted in continued flooding.



A flooded area in Benin. Photo/ Benin Red Cross

It is anticipated that the displaced persons will remain in the temporal shelters longer than was expected and this is likely to lead to increased health risks in the displacement camps. There is urgent need to provide emergency shelter to the displaced households who risk another displacement from these temporal shelters due to plans by the local authorities to re-open the schools to students for continued learning. The floods have also caused extensive damage to roads, bridges and other infrastructures. Currently, information on the exact numbers, needs and conditions of those affected by the flooding is inadequate due to difficulties in reaching the scattered populations.

In response to the floods, Benin Red Cross (BRC) has mobilized volunteers in the affected areas to provide first aid, transport support and basic camp management activities. The National Society local branches are mobilizing resources within their community networks. The government of Benin has provided immediate assistance to those affected through provision of food and non-food items.

This operation is expected to be implemented over 3 months, and will therefore be completed by 7 January 2013; a Final Report will be made available three months after the end of the operation (by 7 April, 2013).

[<click here for the DREF budget; here for contact details; here to view the map of the affected area>](#)

The situation

Benin is experiencing heavy rains in the northern part of the country. The high amount of rainwater has caused River Niger to break its banks. In many areas the River is reported more than one kilometre out of bed causing destruction of roads, bridges, loss of property, livestock and cultivated land and interruption of community livelihood activities. The most affected are the areas of Karimama and Malanville with a total of 45,000-50,000 persons affected. Other affected areas include the Central region.

The challenges of data collection in the flood hit areas notwithstanding, the National Society local branches in close collaboration with the local crisis committees set up by the local authorities have conducted initial assessment. Reports indicate that a total of 36,640 persons (7,327 families) in Karimama, 7,217 persons (717 families) in Malanville and 3,268 persons (540 families) in Boone are affected. Furthermore the areas of Zou, Zagnanado, Ouinhi and Zogbodomey are also reported affected, but it has not yet been possible to get confirmed numbers of those affected.

Table 1: Displaced households/persons

Region	Number of displaced households	Number of displaced persons
karimama	158	1,032
Birni Alafia	258	1,676
Bogbogo	109	485
Kompa	280	1,442
Monsey	945	3,460
Tombouctou	248	1,266
Madekali	70	357
Garou	112	574
Total	2,180	10,292

The traditional houses in these flood hit areas are made of mud and other porous materials. Due to their fragile state, many have collapsed under the flood waters with at least 2,000 houses confirmed. The number of the collapsed houses is estimated to be higher. This has resulted in widespread internal displacements in the affected communities with most of those displaced residing in schools and other institutional buildings or in makeshift camps in the open air. The National Society reports that out of 11 internal displacement sites assessed, only 4 have sanitation facilities. A total of 97 tents provided by the government are in use in those sites.

The floods have not subsided as was expected. This would have allowed those displaced to return to their homes. However heavy rainfall received in the first week of October has led to increased flooding and it is unclear when the flood waters are likely to subside. The government has announced that the schools currently used for emergency shelter need to be vacated to ensure that normal school resumed in the affected areas. The displaced persons residing in those schools are expected to move to other displacements sites.

The local authorities have been providing basic food and emergency shelter (tents), but the response is considered inadequate at the moment.

Cases of cholera have been reported in Benin since the beginning of October and it is yet unknown whether it has spread to the flood-affected areas. The contamination of water sources caused by the floods and the poor sanitary conditions in the displacement sites has increased the risks of water-borne diseases such as cholera.

Benin experienced similar heavy flooding last year and based on the meteorological forecast for this rainy season, the ministry of interior's disaster management unit organized floods awareness campaigns. The floods however have still had a considerable effect on the communities and a response to the needs is urgently needed. Seeing that the neighbouring countries of Niger and Nigeria have experienced similar heavy flooding, it is important to keep a regional overview when planning international interventions in response to these floods.

Coordination and partnerships

The National Society is participating in local crisis committees to ensure that Red Cross response aligns with government interventions and supplements the efforts of the civil protection authorities. The BRC is also involved in flood response coordination at the national level, but coordination and sharing of information still remains a challenge and is considered to be inadequate at the moment.

There are no available plans for international assistance to the floods at this time. CARE international has expressed intention of distributing basic relief items in Malanville, Karimama, N'Dali and Tchaourou.

The Beninese government through the interior minister provided food (oil, rice, sardines) and non-food items (mats, children's clothing, packages of sheet metal, nails, toiletries and tents) to those affected. UNICEF has provided hygiene kits. This is not sufficient in meeting the needs of affected population.

Red Cross and Red Crescent action

The local branches of the Benin Red Cross have initiated response to the immediate effects of the floods supported by community members and commercial partners. As part of the response, 75 volunteers are providing first aid and assistance in transport and erection of tents for the displaced population.

The IFRC is providing technical support and advice to the National Society in forging ahead with the challenges. The Federation through its West Coast regional representation based in Abidjan closely together with the Benin Red Cross (BRC) monitors the evolving floods situation. The Federation through its West Coast Regional Representation will support the BRC in the publication of situational reports while the BRC is keeping a good collaboration with local media to increase visibility during the operation and keep the community informed of the BRC undertakings. Regular updates will be posted on DMIS as reports emerge.

The needs

There is an urgent need for more needs assessments in the affected areas to understand the scope of the crisis in order to determine necessary interventions and inform beneficiary targeting. In areas with reported flooding but no official figures it is important to avail Red Cross assessment information to other actors in order to strengthen the overall response. In areas with identified displaced persons, assessments need to be carried out to identify specific target groups for the BRC interventions.

There is need for immediate support to those affected in form of food, shelter, basic household items, adequate sanitation and reduction of flood-related health risks. The local authorities plan to re-open the schools currently used for emergency shelter in order to resume education activities. This will create an even higher demand for emergency shelter and management of the displacement sites.

The National Society will target displaced population in the identified displacement camps. The pre-positioned 750 shelter/NFI kits will be distributed to the 750 most vulnerable families who have lost all possessions and have not received emergency shelter or Non Food Items (NFI) from the government. The selection will prioritize vulnerable groups such as female-headed households, elderly and families with children. Combined with government and CARE international interventions, this is expected to cover most of the emergency shelter needs as identified at this moment. Assessments are ongoing but hampered as it is difficult to reach the scattered affected population. Once the displaced population return to their original homes as soon as the floodwaters subside, the basic sheltering materials will be used for repairs of the traditional shelters. BRC also plans to identify and support 2,200 families with community-level health and hygiene promotion activities and basic sanitation facilities in the displacement sites.

The incomplete assessment information and the anticipated move from the schools to the camps make it difficult to finalize the number of targeted families per displacement site at this stage.

The proposed operation

The National Society has expertise in Health, Watsan and NFI interventions in response to floods having had responded to similar floods in 2011. The interventions proposed in this operation will build on this expertise. BRC participated in the IFRC 2011 shelter kit training in Nigeria and will apply skills acquired from the training. However there is still a need to further strengthen the BRC emergency shelter capacity. Regional Disaster Response Team (RDRT) or Partner National Society (PNS) technical shelter support will be sought for the implementation of this operation.

Considering the remoteness of the affected areas from the BRC headquarters, an operations hub will be set up in one of the branch offices and one laptop and one printer will be supplied for reporting purposes.

Emergency Assessments	
Outcome: Adequate assessment data is collected in the affected areas and analysed to develop relevant intervention plans.	
Outputs <ul style="list-style-type: none"> Detailed assessment information is available for the affected areas. A relevant plan of action for the proposed interventions is developed. The assessment information and intervention plan is shared with other humanitarian actors and authorities through relevant coordination mechanisms. 	Planned activities: <ul style="list-style-type: none"> Rapid induction training of 100 volunteers in assessment, distribution, monitoring and evaluation. Conduct detailed field assessments in affected areas. Provide assessment reports. Analyse the collected information to develop and prioritize and develop the most relevant targeting for the proposed interventions. Advocate for improved coordination mechanisms and make all BRC assessment information available for other humanitarian actors and authorities.

Emergency shelter / Non-food items	
Outcome: Some 750 households (3'750 beneficiaries) benefit from emergency shelter distribution	
Outputs <ul style="list-style-type: none"> 750 households are provided with appropriate emergency shelter and technical assistance 750 households have received basic relief items (sleeping mats, blankets, kitchen sets) 	Planned activities: <ul style="list-style-type: none"> Identify and register beneficiaries, in coordination with other partners Provide shelter kits, a guidance flier and timber for simple framing to targeted beneficiaries Train volunteers to support and assist the beneficiaries with the construction of emergency shelter Assist 750 families in erection of emergency shelter. Distribute basic NFIs (2 mats, 2 blankets and 1 kitchen set per family) Monitor, evaluate and report on the activities.

Emergency health/Nutrition	
Objective: Reduce the floods related health risks for 10'000 beneficiaries for 3 months through community-level	
Outputs <ul style="list-style-type: none"> Up to 10'000 beneficiaries (2'200 households) are targeted in disease prevention and health promotion activities at Community-level in 2 regions Improve the overall health situation in the area. 	Planned activities: <ul style="list-style-type: none"> Conduct assessment of health needs of the affected population Provide affected communities with First Aid and referral services Organize health education and hygiene promotion activities among the affected population to prevent disease outbreak and contagion. (Initiate activities for disease prevention and health messages through the development of IEC materials) Monitor the situation and ensure adequate reporting

Water, Sanitation, and Hygiene promotion
Outcome: Reduced risk of waterborne and sanitation related diseases during Emergency situation for 2'200 households through hygiene promotion and improvement of basic water and sanitation services accessibility

<p>Outputs</p> <ul style="list-style-type: none"> • Improved knowledge of hygiene practices amongst the targeted households. • Increased access to safe drinking water for the targeted households. • The target population is provided with basic sanitation facilities in adequate quantity which respects sphere standards 	<p>Planned activities:</p> <ul style="list-style-type: none"> • Support and train volunteers to conduct rapid assessment to identify key hygiene messages and provide the necessary information for the design of hygiene kits fitted with treatment option • Train and orient volunteers to conduct hygiene promotion activities in all displacement camps • Distribute soap and household water treatment kits to 2'200 households (bucket, jerry can, and aqua tabs) and provide necessary demonstration/training. • Conduct awareness sessions on household water treatment and conservation • Organise prediagnosis and feasibility studies on existing sanitation facilities and IDP sites • Procure tools and materials for emergency latrine and bath house construction • Rehabilitate 5 latrines at the displacement sites. • Construct 5 emergency latrines • Construct 5 bath houses equipped with washing space.
---	---

<p>Logistics</p>
<p>IFRC has a prepositioned regional stock in Porto novo. 750 family kits consisting of 1500 tarpaulins, 750 shelter tool kits, 750 kitchen sets, 1500 sleeping mats, 1500 blankets and available 4'148 soap bars have been released for immediate distribution. The DREF operation will replenish the released stocks through IFRC international procurement.</p> <p>Jerry cans, buckets, aqua tabs and timber for emergency shelter support will be procured locally following standard IFRC procurement procedures. A short term logistics support will be deployed to assist the procurement process. All relief items will be transported directly from the Porto Novo warehouse to the distribution sites.</p>

Contact information

For further information specifically related to this operation, please contact:

- **IFRC Regional Representation:** Daniel Sayi, Regional Representative for West Coast; Abidjan; phone; +225 66775261 email: daniel.sayi@ifrc.org
- **IFRC Africa Zone:** Daniel Bolaños, Disaster Management Coordinator for Africa; Nairobi; phone: +254 (0)731 067 489; email: daniel.bolanos@ifrc.org
- **IFRC Geneva:** Christine South, Operations Quality Assurance Senior Officer; phone: +41.22.730.45 29; email: christine.south@ifrc.org
- **IFRC Regional Logistics Unit (RLU):** Ari Mantyvaara Logistics Coordinator, Dubai; phone +971 50 4584872, Fax +971.4.883.22.12, email: ari.mantyvaara@ifrc.org

For Resource Mobilization and Pledges:

- **IFRC Africa Zone:** Loïc de Bastier, Resource Mobilization Coordinator for Africa; Addis Ababa; phone: +251-93-003 4013; fax: +251-11-557 0799; email: loic.debastier@ifrc.org

For Performance and Accountability (planning, monitoring, evaluation and reporting):

- **IFRC Africa Zone:** Robert Ondrusek, PMER/QA Delegate for Africa; Nairobi; phone: +254 731 067277; email: robert.ondrusek@ifrc.org

How we work

All IFRC assistance seeks to adhere to the Code of Conduct for the International Red Cross and Red Crescent Movement and Non-Governmental Organizations (NGO's) in Disaster Relief and the Humanitarian Charter and Minimum Standards in Disaster Response (Sphere) in delivering assistance to the most vulnerable.

The IFRC's vision is to inspire, encourage, facilitate and promote at all times all forms of humanitarian activities by National Societies, with a view to preventing and alleviating human suffering, and thereby contributing to the maintenance and promotion of human dignity and peace in the world.

www.ifrc.org
Saving lives, changing minds.



The IFRC's work is guided by Strategy 2020 which puts forward three strategic aims:

1. Save lives, protect livelihoods, and strengthen recovery from disaster and crises.
2. Enable healthy and safe living.
3. Promote social inclusion and a culture of non-violence and peace

DREF OPERATION

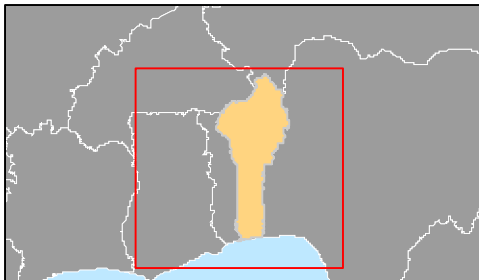
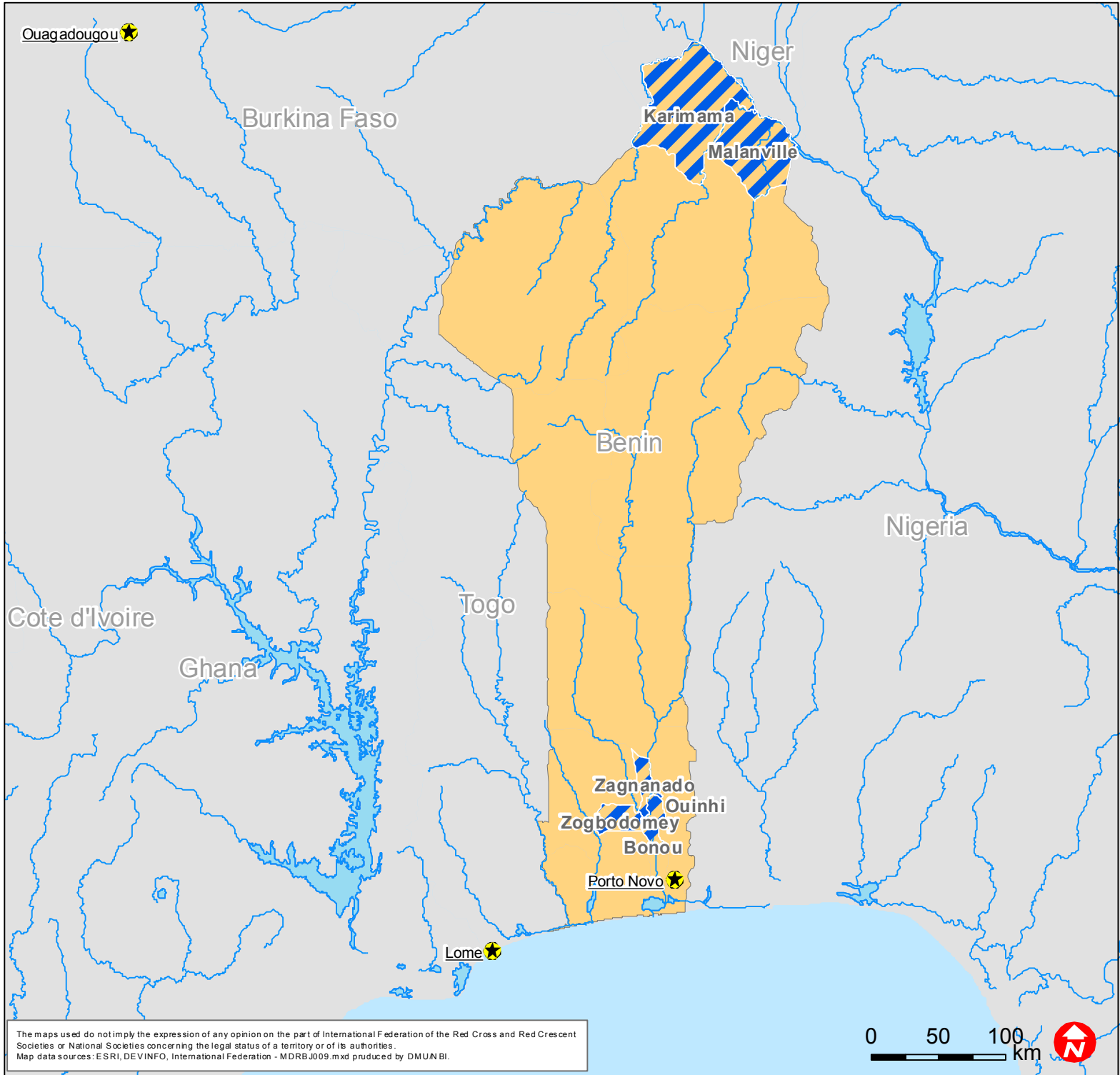
15-10-12

MDRBJ009 BENIN FLOODS

Budget Group	DREF Grant Budget CHF
Shelter - Relief	48,000
Shelter - Transitional	0
Construction - Housing	0
Construction - Facilities	0
Construction - Materials	5,575
Clothing & Textiles	7,200
Food	0
Seeds & Plants	0
Water, Sanitation & Hygiene	22,510
Medical & First Aid	0
Teaching Materials	2,450
Ustensils & Tools	39,375
Other Supplies & Services	0
Emergency Response Units	0
Cash Disbursements	0
Total RELIEF ITEMS, CONSTRUCTION AND SUPPLIES	125,110
Land & Buildings	0
Vehicles Purchase	0
Computer & Telecom Equipment	3,000
Office/Household Furniture & Equipment	0
Medical Equipment	0
Other Machinery & Equipment	0
Total LAND, VEHICLES AND EQUIPMENT	3,000
Storage, Warehousing	0
Distribution & Monitoring	3,000
Transport & Vehicle Costs	26,000
Logistics Services	0
Total LOGISTICS, TRANSPORT AND STORAGE	29,000
International Staff	15,000
National Staff	0
National Society Staff	9,200
Volunteers	27,100
Total PERSONNEL	51,300
Consultants	0
Professional Fees	0
Total CONSULTANTS & PROFESSIONAL FEES	0
Workshops & Training	19,000
Total WORKSHOP & TRAINING	19,000
Travel	8,000
Information & Public Relations	5,004
Office Costs	1,600
Communications	600
Financial Charges	1,000
Other General Expenses	0
Shared Support Services	0
Total GENERAL EXPENDITURES	16,204
Programme and Supplementary Services Recovery	15,835
Total INDIRECT COSTS	15,835
TOTAL BUDGET	259,449



Benin: Floods



 Most affected municipalities