

www.ifrc.org  
Saving lives,  
changing minds.

# Disaster relief emergency fund (DREF) Kenya: Floods

 International Federation  
of Red Cross and Red Crescent Societies

**DREF operation n° MDRKE022**

**GLIDE n° FF-2012-000062-KEN**

**8 May, 2012**

The International Federation of Red Cross and Red Crescent (IFRC) Disaster Relief Emergency Fund (DREF) is a source of un-earmarked money created by the Federation in 1985 to ensure that immediate financial support is available for Red Cross and Red Crescent emergency response. The DREF is a vital part of the International Federation's disaster response system and increases the ability of National Societies to respond to disasters.

**CHF 314,208 has been allocated from the IFRC's Disaster Relief Emergency Fund (DREF) to support the National Society in delivering immediate assistance to some 20,832 beneficiaries. Un-earmarked funds to repay DREF are encouraged.**

**Summary:** Despite the Kenya Meteorological Department's prediction of depressed March-April-May (MAM) 2012 rains in the country, parts of South western, Rift Valley, Coast, Central as well as localized parts in Nairobi and parts of South Eastern Kenya have for the last three

consecutive weeks received above normal rainfall amounts (exceeding 20-50mm per

day) resulting in flash floods, loss of lives, displacement, destruction of property and public infrastructure.

The Kenya Red Cross estimates that approximately 42 people have lost their lives in flood related incidents and approximately 3,616 households (20,832 beneficiaries) have been displaced from their homes and require humanitarian support. An additional 9,938 households (59,628 beneficiaries) are at risk of displacement since they reside in areas that are historically either flood or landslide prone. KRCS is planning with government concerning their possible evacuation. Excessive rainfall is expected to continue into May 2012 leading to additional flooding, displacement and loss of life. Assessment is currently ongoing, the results of which may recommend additional actions, including launching an emergency appeal.

The Kenya Red Cross Society (KRCS) has responded to the needs of the affected populations by



**KRCS Volunteer assists family relocate to a safe area in Homa Bay district. (Photo by KRCS)**

mobilizing staff and volunteers to provide humanitarian response including distribution of food and non food items (NFIs), point of use water treatment chemicals, First Aid, search and rescue services, provision of psychosocial support, tracing services and transportation of casualties from the site to hospitals.

The Kenya Red Cross Society, through this DREF operation, requests funds to assist 3,616 households (20,832 beneficiaries) affected by floods for a period of three months, through provision of food and non food items, search and rescue services, health, water and sanitation and community outreaches to avoid further loss of life and prevent possible disease outbreaks. Funds received will also be used to replenish the Society's already provided NFI stocks in line with its preparedness strategy which strives to ensure that NFI stocks are always readily available to respond to emerging disasters.

This operation is expected to be implemented over three months, and will therefore be completed by 7 August, 2012; a Final Report will be made available three months after the end of the operation.

[<Click here for the revised Budget; here for a map of the affected area; here for contact details>](#)

## The situation

The onset of March-April-May (MAM) long rains which began late in April has gone a long way in replenishing surface water sources country wide. However, the intensity, distribution and amounts received have triggered flooding, leading to loss of lives, displacement of populations and damage to infrastructure throughout the country. This erratic pattern which will include heavy rains are expected to continue in late April and through May, which is likely to lead to additional flooding, and negatively impact local population livelihoods.

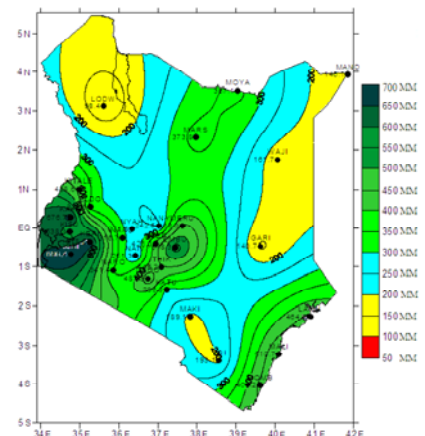
In Kenya, above average rains have been recorded in South Western part of the country, parts of Rift Valley, Coast , Central Kenya as well as localized parts in Nairobi and parts of South Eastern Kenya. The rains received have been so far characterized by very strong winds and hailstorms in certain areas resulting in damage to infrastructure and property. The western part of the country and localized parts of central Kenya have so far received the heaviest rains, exceeding 250mm in a day resulting in flash floods, displacement of people and landslides.

The Climate Prediction Centre forecasted sustained heavy rainfall in the country. In South-western and Western parts of the country, rainfall amounts exceeded 100mm a day in the last week of April 2012. It is important to note that Kenya has had incidents of flooding in areas that have traditionally not been flood zones, with particular emphasis in urban areas such as Mlolongo and Athi River. This clearly demonstrates that urban disaster risk is growing.

From the onset of the rainy season, KRCS has been involved in assessing flood damages, as summarized below:

### West Kenya

The area has been receiving heavy rainfall exceeding 50mm per day over the last three weeks. Flash floods have been reported in the region with six deaths and four missing persons being reported to date. The worst affected areas include Migori, Homa Bay, Busia and Kisumu. Approximately 2,248 households have been displaced within this region.



The worst affected areas include Homa bay, Suba and Rachuonyo. The affected communities are predominantly dependent on river and spring water sources for domestic use. Shallow latrines have been dug in the recent past through efforts made by various actors and the Ministry of Public Health and Sanitation. Toilets have been submerged and pose a high risk of contaminating water sources leading to diarrheal diseases. River Awach Tende burst its banks on 19 April 2012 resulting in the marooning of households in Kaura and Kanam sub locations in Kochia East location of Homa Bay district.

In Kisumu, one evacuation centre, Miruka primary school was completely cut off, forcing the displaced to move to the next closest centre, St. Alloys Primary. In Kolwa, the road linking Rabuor Centre and Kibos remains completely cut off. Ochwado Primary is also not accessible by road although there are people camping there. The road network in Ayweyo sub-location is partly damaged, though still accessible. Crops planted barely a month ago have been swept away by flood waters from River Nyaidho. Monitoring of flood prone areas such as Budalangi is ongoing, with KRCS branch offices reporting that the water levels in River Nzoia are quickly rising with heavy rainfall being experienced in the Budalangi area.

### **Nairobi Region**

This region has traditionally not been flood prone ,however, due to the higher than normal rainfall in the last two weeks, there has been flooding in some of the areas, including Ngong, Narok, Athi River and Kitengela areas. Approximately 459 households have been displaced by flooding in this area. It's important to note that most of the affected areas were made up of informal settlements. This reiterates the position of the World Disaster Report 2010 which points to urban risks and vulnerabilities. In Nairobi, increased construction of houses and human habitation closer to rivers is a contributing factor to the current flooding incidents in these areas. Current heavy rains and strong winds have destroyed infrastructure (roofs blown off and power cables cut).

Additionally, incidents of road traffic accidents have gone up due to the floods with many reports being received at the KRCS emergency operation centre. For example, a reported bus accident in Athi River claimed four lives and thirty eight injuries. The rains have caused serious damage to some connecting roads especially in Kitengela, where a bridge to Athi north at "Baraga" was washed away. The connecting bridge to Kaswitu has been weakened and the main connecting bridge to Ngalalia has been affected by the high raging flood waters. Residents have essentially been cut off from accessing health care and markets. KRCS assessments indicate that approximately 500 households in the area are at risk of displacement due to flooding.

Agricultural fields of approximately 200 hectares with newly planted crops including domestic animals have been washed away and domestic animals (chicken and goats). Heavy rains on 3 April 2012 washed away soil that was holding boulders on an abandoned quarry in an informal settlement (Mathare A4) that tumbled on residential houses. Eight people lost their lives during the disaster with 66 households being displaced.

### **Central Region**

The region has been receiving heavy rains exceeding 50mm per day. Overflow of Athi River along Kilimambogo resulted in the flooding of Gichiiki village. Villagers reportedly were evacuated to Kianjahi primary school with the help of the local chief and counsellor. Approximately 47 households were displaced by the flash floods with 120 household projected to be at risk of flooding.

### **Rift Valley**

All parts of Rift valley received above - normal rainfall, with reported incidents of flooding. At least seven people died after being swept away by flash floods in Hell's gate, Naivasha district on 22 April 2012. Narok Town experienced flash floods with destruction of property.

Heavy rains have been experienced in Turkana North, South and Central, Uasin Gichu, Moi's bridge, Mount Elgon, South Nandi and West Pokot. No flooding incidents have been reported however high amounts of

rainfall continue to be experienced. Floods watch activities ongoing in the region with water levels increasing in many rivers and likely to rise to alarming levels if the rains persist.

In Kwa Rhoda, Nakuru district, 54 households have been displaced by flood waters and are currently residing in local schools. Other areas affected are Mwariki and Banda mali villages.

### Coast

The worst affected areas include Tana River, Taita Taveta, Bangale, Voi, Malindi, Bura and Garsen with a total of 830 households displaced. In Bura, the displaced are camping at Kamaguru location. Water levels in Tana River are increasing posing a risk to people living downstream.

**Table 1: Flood affected people in various parts of Kenya**

Region	District	Displaced households	Projected HH at risk
West Kenya	Homa Bay, Kisumu, Suba, Busia, Nyando, Rachuonyo, Migori	2,226	7638
Nairobi	Kitengela, Ngong, Athi River	459	500
Central	Thika	47	120
Rift Valley	Nakuru	54	230
Coast	Malindi, Bura, Malindi, Garsen, Bangale	830	1,450
<b>Total</b>		<b>3,616</b>	<b>9,938</b>

### Coordination and partnerships

KRCS Regional offices in West Kenya have participated in two district disaster management committee meetings convened by the Government of Kenya (GoK) in order to plan for response and resource mobilization. The GoK through the Ministry of Special Programmes has provided food to the displaced populations in West Kenya and Tana River. The KRCS West Kenya and UNICEF are coordinating plans for response with UNICEF providing Aquatabs for West Kenya.

MSF has committed to providing the affected population in Homa Bay district with 10,000 litre water tanks at specific community access points. This support will augment KRCS distribution of aqua tabs.

The Society distributed food donated by the Government of Kenya to 85 households in Kitengela following heavy rains in the region. GoK has similarly prepositioned 400 bags of maize, 20 bags of soya beans and 10 bales of *uji* (porridge) mix in Nyando to be utilized by flood affected populations.

### Red Cross and Red Crescent action

The society's first response was to mobilize response teams to carry out rapid assessments of the affected areas in order to verify the extent of the disaster. The standard IFRC 72 hour rapid assessment tool was used to gather information from the affected communities through interviews, observation and registration of affected households. The Society has ascertained that 3,616 households are in need of an integrated humanitarian response across the country with additional 9,938 households at risk if the trends persist.

The Society has identified and is currently utilizing three evacuation camp sites in Homa Bay: Kodeyo Catholic Church, Nyangweso School for the Deaf and Magunga health centre.

KRCS sensitized partners during the ad hoc district disaster management committee meeting on the need to consider the Sexual and Reproductive Health needs of the displaced population. A help desk has been set up in Suba District to allow families to report missing persons. At least five cases have been reported.

The Red Cross teams in the Rift Valley Region, including branch coordinators, branch focal persons and volunteers have started sensitizing volunteers, community members on floods, landslide and mudslide preparedness. Monitoring of water levels in flood prone areas is ongoing, with KRCS disaster response teams on high alert. KRCS is currently running the emergency operation centre on a 24 hour monitoring alert focusing early warning early action.

KRCS participation in District Disaster Committee meetings has been ongoing in Rift Valley, West Kenya and Coast Region to enhance the preparedness for flood response. The affected populations have also received NFI kits and point of use water treatment as follows:

**Table 2: NFIs distributed**

Region	Blanket	Tarpaulin	Kitchen set	Mosquito net	Soap	Jerry can	Aquatab
West Kenya	3452	2624	44	3452	1356	1836	30,180
Nairobi	640	-	254	508	-	-	-
Coast	1000	500	500	1000	1000	1000	14,000
<b>Total</b>	<b>5,092</b>	<b>3,124</b>	<b>798</b>	<b>4,960</b>	<b>2,356</b>	<b>2,836</b>	<b>44,180</b>

## The needs

### Relief

Priority needs include distribution of non food items to flood affected populations whose houses have been destroyed and lack access to basic facilities. KRCS will support 1,500 out of the 3,616 households displaced with NFIs from this DREF and the remaining needs shall be covered by existing KRCS prepositioned stock.

### Search and Rescue

KRCS will also work with other response teams in providing search and rescue services by using air and boat rescue operations to reach affected populations. KRCS intends to provide basic search and rescue equipment and protective gear for its response teams to ensure speedy and effective response.

### Emergency Health and Care

Health care systems in the affected regions are expected to be seriously affected by the floods, population displacement, destruction of physical infrastructure and the expected increase in morbidity, injuries, displacements and deaths. This will stretch the available resources beyond manageable limits and is expected to ground public health care services. With the expected epidemics, including malaria, cholera and dysentery, support to health service delivery to affected populations will be inevitable if excess morbidity and mortality is to be avoided. Kenya RC proposes to support delivery of preventive and promotive health services for prevention of epidemics, support the strengthening of community based surveillance for early detection of outbreaks, support in procurement and distribution of emergency supplies and enhance community education.

The proposed activities for health sector support aim at strengthening community-based surveillance for early outbreak detection and reporting, increasing access to basic health care through an integrated Primary Health Care based prevention and clinical services especially in hard to reach and cut-off communities. The clinical services shall be provided by the MoH staff with facilitation from KRCS

## Water and Sanitation

Identified needs include water treatment, provision of water storage facilities, sanitation solution and hygiene promotion.

The proposed activities for water and sanitation will be aimed at ensuring access to safe water, improved sanitation facilities and promotion of hygiene to prevent water borne diseases among the displaced population. KRCS will procure and distribute water treatment chemicals at household level to ensure that the displaced persons will have safe water for drinking. This shall be tied to the provision of water storage facilities. Safe disposal of human waste remains a critical component of this response as it ensures that transmission of faecal oral diseases is stopped. To this end, KRCS shall distribute *Peepoo* bags<sup>1</sup> and sanplats to the displaced population. The Peepoo, being a new concept to most communities in Kenya, KRCS shall work closely with its originators and Ministry of Public Health and sanitation to ensure adequate trainings and sensitization on the handling and disposal aspects of this sanitation solution. As an innovative pilot approach to sanitation, the intervention will be regularly monitored and reviewed, with a final evaluation to be carried out at the end of the operation. The disposal aspects of the Peepoo bags will be achieved through hiring of sanitation firms to handle the disposal of the used Peepoo bags. Community sensitization on hygiene and sanitation promotion shall be achieved through training of volunteers on use of the PHASTER<sup>2</sup> methodology. The trained volunteers shall cascade the knowledge within the camps.

## The proposed operation

**Goal: Save lives and reduce vulnerabilities amongst the flood affected populations in Kenya**

Search and Rescue	
<b>Outcome:</b> Flood-affected populations' lives are saved by being rescued to safer grounds.	
<b>Expected results</b> <ul style="list-style-type: none"> <li>Rescue of persons trapped as a result of floods</li> <li>Evacuation of persons from flooded areas to higher grounds.</li> <li>Transfer of injured persons to hospitals</li> </ul>	<b>Planned Activities</b> <ul style="list-style-type: none"> <li>To support standby teams in all regions for rapid deployment</li> <li>To evacuate affected persons to safer grounds</li> <li>To equip the search and rescue teams with basic rescue gear</li> <li>To support operational links to other search and rescue authorities</li> </ul>

Relief	
<b>Outcome:</b> Improved conditions for an estimated 1,500 out of the 3,616 households (20,832 beneficiaries) affected by floods	
<b>Expected results</b> <ul style="list-style-type: none"> <li>Emergency relief items (non-food items) are provided to 1,500 households affected floods.</li> </ul>	<b>Activities planned</b> <ul style="list-style-type: none"> <li>Conduct capacity and needs assessments in the affected areas</li> <li>Develop beneficiary targeting strategy and registration system to deliver the intended assistance</li> <li>Distribute non-food items to the affected communities (blankets, kitchen sets, jerry cans, soap and mosquito nets) form point of dispatch to the end user.</li> <li>Monitor and evaluate the relief activities and provide</li> </ul>

<sup>1</sup> From [www.peepoople.com](http://www.peepoople.com): "Peepoo is a personal, single-use, self-sanitising, fully biodegradable toilet that prevents faeces from contaminating the immediate area as well as the surrounding ecosystem. After use, Peepoo turns into valuable fertiliser..."

<sup>2</sup> Participatory hygiene and sanitation transformation in emergency response

	reporting on relief distribution
--	----------------------------------

### Emergency health and care

**Outcome:** Immediate risks of morbidity and mortality caused by floods and landslides are reduced by providing preventive public health, community care and basic clinical services to 3,616 households (20,832 beneficiaries) affected by floods.

Expected Results	Activities planned
<ul style="list-style-type: none"> <li>Improved access to basic healthcare services among the populations affected and displaced by floods.</li> <li>Increased awareness on disease prevention and control by affected communities.</li> <li>Enhanced disease surveillance at community level.</li> <li>Improved preparedness and enhanced capacity to respond to epidemics.</li> </ul>	<ul style="list-style-type: none"> <li>Detailed assessments and mapping the existing health capacities for identification of gaps</li> <li>Carry out health promotion and disease prevention campaigns focusing on diseases with epidemic potential including cholera prevention, prevention of Vector borne diseases including malaria, address reproductive health issues in emergencies including transmission of HIV, promotion of safe motherhood and advocacy for prevention of Sexual and gender based violence (SGBV).</li> <li>Support Ministry of Health in meeting basic health care needs of the flood affected population through basic clinical services and preventive care including antenatal care, postnatal care, safe delivery especially for risk pregnancies and provide reproductive health education</li> <li>Provide basic medical supplies (Inter agency Emergency Health Kit (IEHKs), targeting existing hospitals and clinics without supplies</li> <li>Conduct a stakeholder mapping to determine the presence of other actors and their contribution to the health sector to avoid duplication of activities and enhance coordination</li> <li>Continuous monitoring, evaluation and development of operational updates.</li> </ul>

### Water, sanitation, and hygiene promotion

**Outcome:** Reduced risk of waterborne and water related diseases in targeted communities

Expected results	Activities planned
<ul style="list-style-type: none"> <li>Improved access and use of safe water 3,616 households (20,832 beneficiaries) affected by floods in line with SPHERE standards.</li> <li>Access to adequate sanitation facilities in line with the SPHERE standards.</li> <li>Attitude change, increased knowledge and skills on prevention of waterborne diseases</li> </ul>	<ul style="list-style-type: none"> <li>Procure and distribute water treatment chemicals at household level</li> <li>Provision of proper water storage materials</li> <li>Provision of sanitation solutions including Peepoo bags and sanplats</li> <li>Carry out refresher training on PHASTER for volunteer TOTs (trainers of trainers)</li> <li>Deployment of PHASTER TOTs to train affected communities on hygiene and cascading of Hygiene promotion at household level</li> <li>Monitor and evaluate Peepoo bag experience.</li> </ul>

### Logistics

**Outcome 4:** Efficient and effective logistical support of non-food relief and stock relief items in warehouses in the field.

Expected results	Activities planned

<ul style="list-style-type: none"> <li>• NFIs reach the target population on time</li> <li>• Proper storage of NFIs</li> <li>• Staff and volunteers are provided with reliable transport in order to reach target areas.</li> </ul>	<ul style="list-style-type: none"> <li>• To distribute non-food items to 1500 households.</li> <li>• Transportation of personnel and volunteers.</li> </ul>
---	---

## Contact information

### For further information specifically related to this operation please contact:

- **Kenya:** Mr. Abbas Gullet, Secretary General, Kenya Red Cross Society, email: [gullet.abbas@kenyaredcross.org](mailto:gullet.abbas@kenyaredcross.org). Phone 254.20.60.35.93; 254.20.60.86.81/13 Fax: 254.20.60.35.89
- **Kenya:** East Africa Regional Office; Maxine Clayton, Ag Regional Representative, East Africa, Nairobi, phone: +254.20.283.5163; fax: 254.20.271.27.77; email: [maxine.clayton@ifrc.org](mailto:maxine.clayton@ifrc.org)
- **IFRC Zone:** Daniel Bolanos, Disaster Management Coordinator, Africa; phone: +254 (0)731 067 489; email: [daniel.bolanos@ifrc.org](mailto:daniel.bolanos@ifrc.org)
- **IFRC Geneva:** Christine South, Operations Support; phone: +41.22.730.45 29; email: [christine.south@ifrc.org](mailto:christine.south@ifrc.org)
- **IFRC Regional Logistics Unit (RLU):** Ari Mantyaara Logistics Coordinator, Dubai; phone +971 50 4584872, Fax +971.4.883.22.12, email: [ari.mantyaara@ifrc.org](mailto:ari.mantyaara@ifrc.org)

### For Resource Mobilization and Pledges:

- **IFRC Africa Zone:** Loïc de Bastier, Resource Mobilization Coordinator; phone: +251-93-003 4013; fax: +251-11-557 0799; email: [loic.debastier@ifrc.org](mailto:loic.debastier@ifrc.org)

### For Performance and Accountability (planning, monitoring, evaluation and reporting)

- **IFRC Zone:** Robert Ondrusek, PMER/QA Delegate, Africa phone: +254 731 067277; email: [robert.ondrusek@ifrc.org](mailto:robert.ondrusek@ifrc.org)

## How we work

All IFRC assistance seeks to adhere to the Code of Conduct for the International Red Cross and Red Crescent Movement and Non-Governmental Organizations (NGOs) in Disaster Relief and the Humanitarian Charter and Minimum Standards in Disaster Response (Sphere) in delivering assistance to the most vulnerable.

The IFRC's vision is to inspire, encourage, facilitate and promote at all times all forms of humanitarian activities by National Societies, with a view to preventing and alleviating human suffering, and thereby contributing to the maintenance and promotion of human dignity and peace in the world.

[www.ifrc.org](http://www.ifrc.org)  
Saving lives, changing minds.



The IFRC's work is guided by Strategy 2020 which puts forward three strategic aims:

1. Save lives, protect livelihoods, and strengthen recovery from disaster and crises.
2. Enable healthy and safe living.
3. Promote social inclusion and a culture of non-violence and peace.

# DREF OPERATION

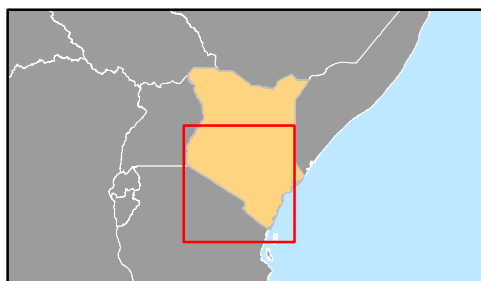
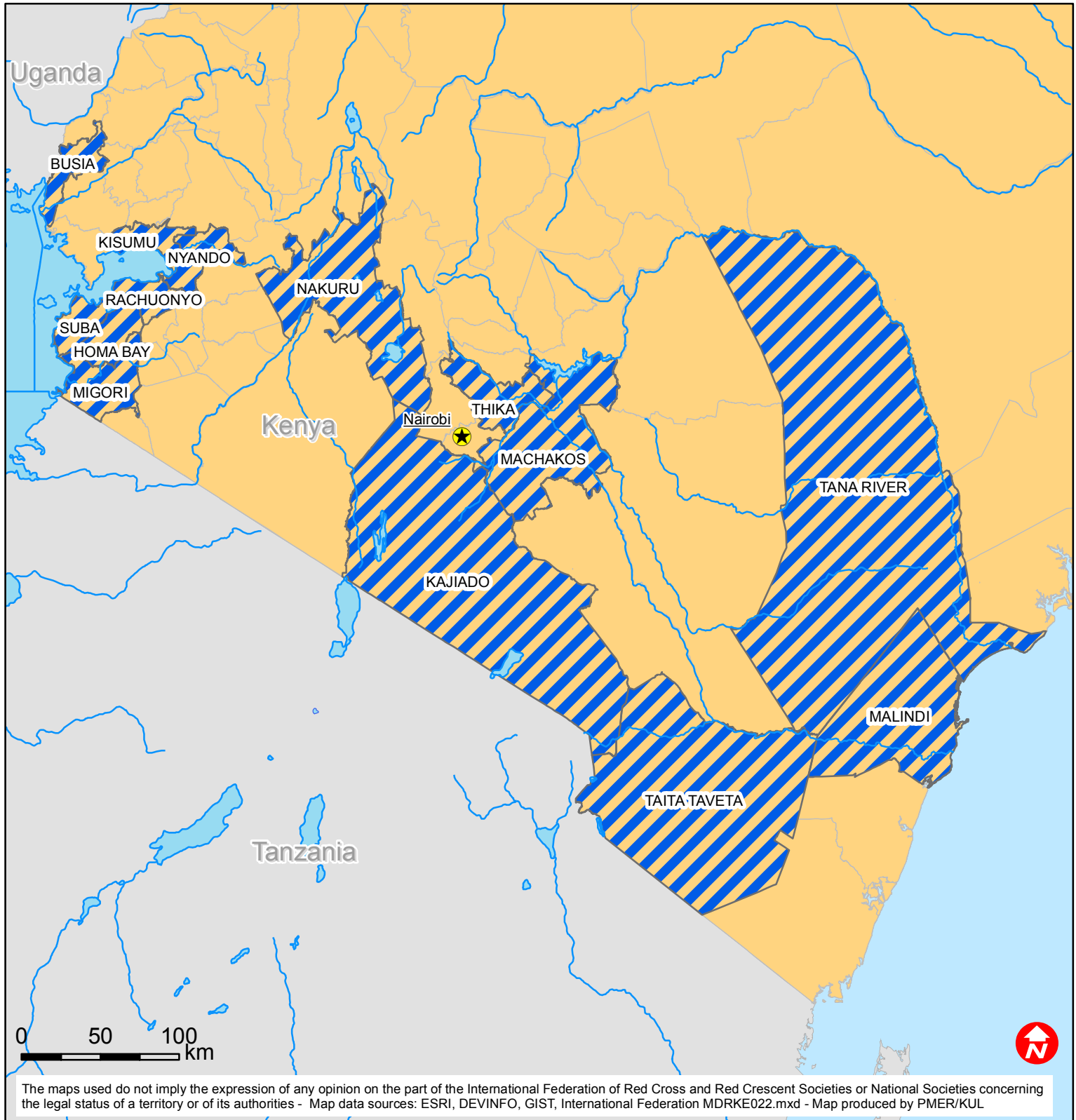
08-05-12

Kenya: Floods 2012 (MDRKE022 )

<b>Budget Group</b>	<b>DREF Grant Budget CHF</b>
Shelter - Relief	18,000
Clothing & Textiles	33,000
Water, Sanitation & Hygiene	38,733
Medical & First Aid	21,667
Utensils & Tools	52,333
Other Supplies & Services	8,839
<b>Total RELIEF ITEMS, CONSTRUCTION AND SUPPLIES</b>	<b>172,572</b>
Storage, Warehousing	13,333
Distribution & Monitoring	8,333
Transport & Vehicle Costs	38,500
<b>Total LOGISTICS, TRANSPORT AND STORAGE</b>	<b>60,167</b>
National Society Staff	17,667
Volunteers	9,574
<b>Total PERSONNEL</b>	<b>27,241</b>
Consultants	6,000
<b>Total CONSULTANTS &amp; PROFESSIONAL FEES</b>	<b>6,000</b>
Workshops & Training	20,000
<b>Total WORKSHOP &amp; TRAINING</b>	<b>20,000</b>
Travel	
Information & Public Relations	6,939
Communications	1,111
Financial Charges	1,000
<b>Total GENERAL EXPENDITURES</b>	<b>9,051</b>
Programme and Supplementary Services Recovery	19,177
<b>Total INDIRECT COSTS</b>	<b>19,177</b>
<b>TOTAL BUDGET</b>	<b>314,208</b>



# Kenya: Floods



 Affected districts