

Disaster relief emergency fund (DREF) Bangladesh: Tropical Cyclone Mahasen

DREF operation n° MDRBD013
GLIDE n° TC-2013-000060-BGD
18 May 2013

The International Federation of Red Cross and Red Crescent (IFRC) Disaster Relief Emergency Fund (DREF) is a source of un-earmarked money created by the Federation in 1985 to ensure that immediate financial support is available for Red Cross and Red Crescent emergency response. The DREF is a vital part of the International Federation's disaster response system and increases the ability of National Societies to respond to disasters.

CHF 305,688 has been allocated from the International Federation of Red Cross and Red Crescent Societies' (IFRC) Disaster Relief Emergency Fund (DREF) to support the Bangladesh Red Crescent Society (BDRCS) in delivering immediate assistance to 20,000 beneficiaries for three months. Unremarked funds to replenish the DREF are encouraged.



Destroyed houses in Patuakhali district caused by cyclonic storm Mahasen. **Photo:** BDRCS.

Summary

During the morning of 16 May, cyclonic storm Mahasen made landfall in Patuakhali district in southern Bangladesh and weakened as it advanced and a predicted storm surge was avoided due to low tide. It hit ten west

central coastal districts on 16 May, affecting 1,285,508 people and leaving 13 people dead. Of the ten coastal districts hit, the three districts of Patuakhali, Bhola and Barguna are the worst affected as the cyclone makes landfall. As of 15 May, approximately 1.1 million people were evacuated to cyclone shelters. Some of the evacuated populations have started returning to their homes, while the remainder are still in cyclone shelters as the homesteads are flooded with tidal surges caused by the cyclone. As per the government's initial information as of 17 May, a total of 49,178 houses have been completely destroyed and 45,825 houses are partially destroyed.

Since 12 May, a total of 49,365 cyclone preparedness programme (CPP) volunteers have been mobilized in the 13 coastal districts. The CPP volunteers were engaged in disseminating alert messages to coastal communities to prepare them for safe evacuation and advised fishermen not to sail to the deep sea. The Bangladesh Red Crescent Society (BDRCS) has been conducting search and rescue operations, giving first aid, and distributing food and clean water to the affected population, especially in the remote islands of Patuakhali, Bhola and Barguna districts.

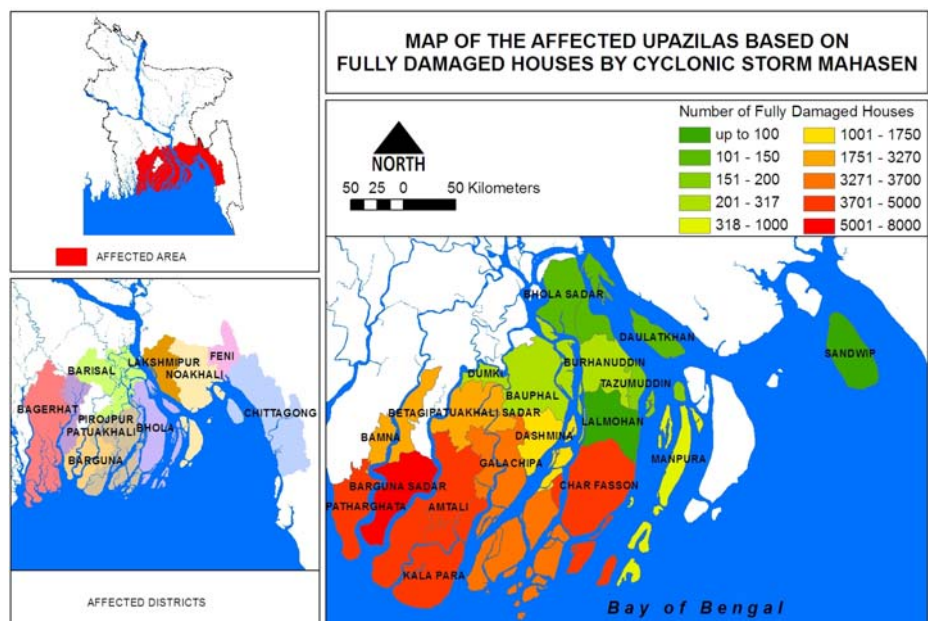
The urgent need of the affected people remains to provide emergency shelter and basic food and water. Further assistance is needed in the longer-term to help the affected communities to rebuild and restore their lives and livelihoods. BDRCS, with the support and coordination of the International Federation of Red Cross and Red Crescent Societies (IFRC), will respond to immediate needs of the affected population in emergency shelter, water and sanitation facilities, and basic food and non-food items.

The proposed operation is to assist 4,000 families (20,000 beneficiaries) of the three most affected districts Patuakhali, Barguna and Bhola. This is an initial allocation based on currently available information and as more detailed assessment data is available in the coming days, the plan of action will be reviewed and given more detail.

This operation, as it stands now, is expected to be implemented over three months, and will therefore be completed by 17 August 2013. A Final Report will be made available three months after the end of the operation (by 17 November 2013).

The situation

Cyclonic storm Mahasen hit ten west central coastal districts on 16 May, affecting 1,285,508 people and leaving 13 people dead. On 15 May around 1.1 million people were evacuated to safer places like cyclone shelters. Some of these evacuated populations have started returning to their homes though some of them are still in cyclone shelters as the homesteads are flooded with tidal surges caused by the cyclone. As per the government's initial information as of 17 May, a total of 49,178 houses have been completely destroyed and 45,825 houses are partially destroyed.



According to the Bangladesh Meteorological Department, cyclonic storm Mahasen was positioned over west central Bay and adjoining east central Bay on 15 May 2013 and moved slightly north-northeastwards. It was centered at about 875 km southwest of Chittagong port, 815 km southwest of Cox's Bazar port and 760 km south-southwest of Mongla port (near lat 16.00 n and long 87.00 e) on 15 May. It was likely to intensify further and move in a north-northeasterly direction and anticipated to cross Khepupara-Teknaf coast near Chittagong by 16 May, although the peripheral gusty/squally wind was expected to impact coastal regions of Bangladesh at 10 pm on 15 May. The maritime ports of Chittagong and Cox's Bazar had been advised to lower local warning signal number four and instead hoisted danger signal number seven (r) seven and for Mongla, signal number five had been hoisted.

Earlier in the week, a total 49,365 CPP volunteers had been mobilized in the 13 coastal districts. The CPP volunteers were engaged in disseminating alert messages to coastal communities to prepare them for safe evacuation and advised fishermen not to sail too far off the coast.

During the morning of 16 May, the cyclonic storm made landfall in Patuakhali district in southern Bangladesh and weakened as it advanced and a predicted storm surge was avoided due to low tide. Meanwhile, the maritime ports of Chittagong and Cox's Bazar have been advised to lower danger signal number seven and hoist local cautionary signal number three. The maritime port of Mongla has been advised to lower danger signal number five but instead hoist local cautionary signal number three. All fishing boats, trawlers and

marine vessels over the North Bay have been advised to remain in shelter until noon on 17 May and then proceed with caution until further notice.

Air traffic in Chittagong and Cox's Bazar port was suspended on 15 May. It reopened at noon on 17 May. River transportation systems were also stopped as of 15 May. It reopened at noon on 17 May.

BDRCS has been conducting search and rescue operations, giving first aid, and distributing food and clean water to the affected population, especially in the remote islands of Patuakhali, Bhola and Barguna districts.

The Government of Bangladesh (GoB) has sanctioned the distribution of food and cash amounting to BDT 12 million (approximately CHF 146,323) and 3,501 MT of rice in the cyclonic affected districts. With the the Prime Minister's Cabinet's approval, the District Disaster Management Committees (DDMCs) have been advised to treat all public buildings as safer shelters, including some private buildings such as hotels. Around 100 water treatment plants are mobilised to serve the cyclonic storm affected population. The Armed Forces, under the Prime Minister's Office order, has established information hub to coordinate food distribution.

Heavy rains caused by the cyclone coupled with gales flattened huge tracts of standing crops and washed away numerous fish ponds and fish culture. It also caused extensive damage to embankments in the coastal districts. Thousands of people have been injured and many livestock killed.

Among the ten coastal districts hit, the three districts of Patuakhali, Bhola and Barguna are the worst affected as the cyclone makes landfall.

The urgent need of the affected people remains to provide emergency shelter, and basic food and water. Further assistance is needed in the longer-term to help the affected communities to rebuild and restore their lives and livelihoods. With the support of IFRC, BDRCS will take the lead in responding to the immediate needs of the affected population in emergency shelter, water and sanitation facilities, and basic food and non-food items.

Coordination and partnerships

BDRCS's national headquarters maintained regular communication with the Bangladesh Meteorological Department to monitor the weather situation. In addition, BDRCS has been gathering situation updates from different agencies including UNDP and the Network for Information Response and Preparedness Activities on Disaster (NIRAPAD). Since BDRCS/IFRC are active members of the Humanitarian Country Task Team (HCTT) Disaster Emergency Response (DER) group, information and operation updates are shared with other humanitarian agencies and the national government in order to avoid overlapping of distribution of relief goods. BDRCS has good working relations with the local administration, and this enables the national society to effectively target the most affected areas and communities.

Regular meetings had been held since 14 May, where the National Society, in-country Partner National Societies, IFRC and International Committee of Red Cross (ICRC) took part.

The Shelter Cluster group met on 16 and 17 May to review the lack of shelter for the affected population. The Shelter Cluster agreed on assessment and mobilization, collecting shelter materials in stock in order to determine the appropriate shelter materials for those who needs shelter. The Shelter Cluster group works in coordination with other Clusters. Besides the Shelter Cluster, IFRC also participates in Early Recovery and Health Cluster meetings as well.

Red Cross and Red Crescent action

When the cyclonic storm was approaching the coastal areas of Bangladesh from 11 May, BDRCS immediately alerted and mobilized its CPP volunteers and staff for disseminating early warning messages to the populations living in the 13 targeted districts. BDRCS called an emergency review meeting to prepare a plan for mobilizing its staff, volunteers and resources to respond to the consequences of the cyclonic storm.

Right from the start, the BDRCS cyclone contingency plan has been activated. BDRCS/IFRC has deployed three joint teams in Chittagong, Noakhali and Barisal regions which were expected to be affected by the cyclonic storm. Each of the teams had BDT 100,000 (approximately CHF 1,219) cash for emergency procurement of dry food from the local suppliers. Initially, BDRCS national headquarters (NHQ) has dispatched three trucks with 3,000 NFIs (tarpaulins and water jerry cans) to the areas mentioned above.

However, the situation in Chittagong was better than expected. The prepositioned NFIs for Chittagong have been returned to the NHQ. The NFIs in Barisal region continue to be stationed at Barisal until the requirements for Bhola, Barguna and Patuakhali are determined. The advance relief team will remain in Barisal to distribute NFIs for three districts.

BDRCS CPP and GoB have evacuated 1.1 million people prior to the landfall of the cyclonic storm making its landfall at the coast. The Chittagong district and city units are working in close coordination with the respective deputy commissioners. The Cox's Bazar unit has made similar preparation to respond to the cyclonic storm. People will move to some of the safer shelters.

In-country PNSs like British Red Cross and German Red Cross have provided additional vehicle for BDRCS's initial response activities. The British Red Cross and German Red Cross are expected to operate in their respective project areas in the offshore islands of Hatia, Khulna and, Borguna, Patuakhali districts.



BDRCS volunteers are disseminating early warning message in the affected community. **Photo:** BDRCS.

The needs

Selection of people to be reached: Displaced people in the affected districts of Patuakhali, Bhola and Barguna are currently residing on road sides, schools and colleges. These people need shelter, food and clean water. Apart from these displaced people, there is a need of emergency shelter for those whose houses have been destroyed by the cyclonic storm. Those whose livelihoods depend on agriculture may be at risk due to the damage to their rice paddy fields caused by tidal surge water. The fishing community are also in need of immediate food support as fishing activities have been suspended due to the rough sea conditions.

Assessment teams will visit the affected areas to identify further needs. The teams will also, visit the local administration, and will follow up on government updates with regards to present and future interventions. The displaced population in temporary shelters or makeshift houses will be prioritized in the selection of beneficiaries in affected locations in the districts of Patuakhali, Barguna and Bhola. Coordinated response with the government and other agencies will be emphasized to avoid duplication of beneficiaries selection on the ground.

The proposed operation

The proposed operation is to assist 4,000 families of three most affected districts of Patuakhali, Barguna and Bhola for four months as per the below allocation:

- 1,500 families in Kalapara, Sadar, Rangabali and Galachipa Upazila of Patuakhali district.
- 1,500 families in Patarghata, Sadar, Amtoli, Taltoli and Betagi Upazila of Barguna district.
- 1,000 families in Monpora, Charfashion and Sadar Upazila of Bhola district.

Relief distributions (food and basic non-food items)

Outcome: The immediate basic food and essential household needs of 4,000 cyclone affected families are met within four months in three districts of Bangladesh (Patuakhali, Bhola and Barguna).

Outputs (expected results) and activities planned: The target population received a single cash grant of BDT 2,000 (CHF 25) per family for food and household needs.

Activities planned:

- Door-to-door assessments.
- Beneficiary registration and validation.
- Distribution of a single cash grant for food and immediate needs.
- Regular monitoring and reporting through BDRCS national headquarters staff and IFRC field monitors.

Water, sanitation, and hygiene promotion

Outcome: Water-related diseases are reduced for 4,000 flood-affected families within four months in three districts of Bangladesh (Patuakhali, Bhola and Barguna).

Outputs (expected results) and activities planned: Target families have improved access to safe drinking water through storage through jerry cans (two jerry cans per family).

Activities planned:

- Mobilize water jerry canes from BDRCS-IFRC joint DP stock.
- Distribution of jerry canes to the same family targeted for cash grant.
- Regular monitoring and reporting through BDRCS national headquarters staff and IFRC field monitors.
- Replenishment of the DP stock through Zone Logistics Unit.

Emergency shelter

Outcome: The emergency shelter needs for 4,000 flood-affected families are provided within four months in three districts of Bangladesh (Patuakhali, Bhola and Barguna).

Outputs (expected results) and activities planned: The target families received emergency shelter materials (two tarpaulins per family*) to meet their immediate shelter needs.

Activities planned:

- Mobilize tarpaulins from BDRCS-IFRC joint DP stock.
- Distribution of tarpaulins by trained Red Crescent Youth volunteers to the same family targeted for cash grant.
- Regular monitoring and reporting through BDRCS national headquarters staff and IFRC field monitors.
- Procurement and replenishment of tarpaulins dispatched from BDRCS-IFRC DP stock.
- On-going monitoring and technical advice by BDRCS national headquarters and IFRC.

**Only tarpaulins will be provided as external materials (ie rope and bamboo) are locally available to fix a makeshift shelter with tarpaulins. People who already have basic means for shelter use tarpaulins as ground sheets.*

Logistics

Logistics support will be provided following IFRC procedures to source and procure relief items needed, and to ensure the efficient and timely delivery of these items for the success of the operation. Tarpaulins are being supplied by the BDRCS-IFRC pre-positioned stock in Dhaka and will be replenished by the Asia Pacific Zone Logistics Unit in Kuala Lumpur.

Contact information

For further information related to this operation please contact:

Bangladesh Red Crescent Society:

- BMM Mozharul Huq ndc, Secretary General, phone: +88 02 935 0596, email: secretarygeneral@bdracs.org

IFRC Bangladesh country office:

- Tsehayou Seyoum, head of delegation phone: +88 02 933 7314, fax: +88 02 934 1631, email: tsehayou.seyoum@ifrc.org

IFRC South Asia regional office:

- Azmat Ulla, Head of Regional Office, phone: +91 112411 1122, fax: +91 11 2411 1128 email: azmat.ulla@ifrc.org

IFRC Asia Pacific zone office:

- Mathew Schraeder, Operations coordinator, phone: +603 9207 5735, mobile: +6019 6200 758, email: mathew.schraeder@ifrc.org
- Al Panico, Head of operations, phone: + 603 9207 5704, email: al.panico@ifrc.org
- Alan Bradbury, Head of resource mobilization and planning, monitoring, evaluation and reporting (PMER), phone: + 603 9207 5775, email: alan.bradbury@ifrc.org
Please send all funding pledges to zonerm.asiapacific@ifrc.org



Click here

1. Emergency Appeal budget **below**
 2. Click **here** to return to the title page
-

How we work

All IFRC assistance seeks to adhere to the Code of Conduct for the International Red Cross and Red Crescent Movement and Non-Governmental Organizations (NGO's) in Disaster Relief and the Humanitarian Charter and Minimum Standards in Disaster Response (Sphere) in delivering assistance to the most vulnerable.

The IFRC's vision is to inspire, encourage, facilitate and promote at all times all forms of humanitarian activities by National Societies, with a view to preventing and alleviating human suffering, and thereby contributing to the maintenance and promotion of human dignity and peace in the world.

www.ifrc.org
Saving lives, changing minds.



The IFRC's work is guided by Strategy 2020 which puts forward three strategic aims:

1. Save lives, protect livelihoods, and strengthen recovery from disaster and crises.
2. Enable healthy and safe living.
3. Promote social inclusion and a culture of non-violence and peace.

DREF OPERATION

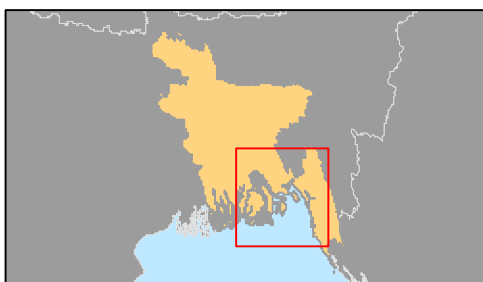
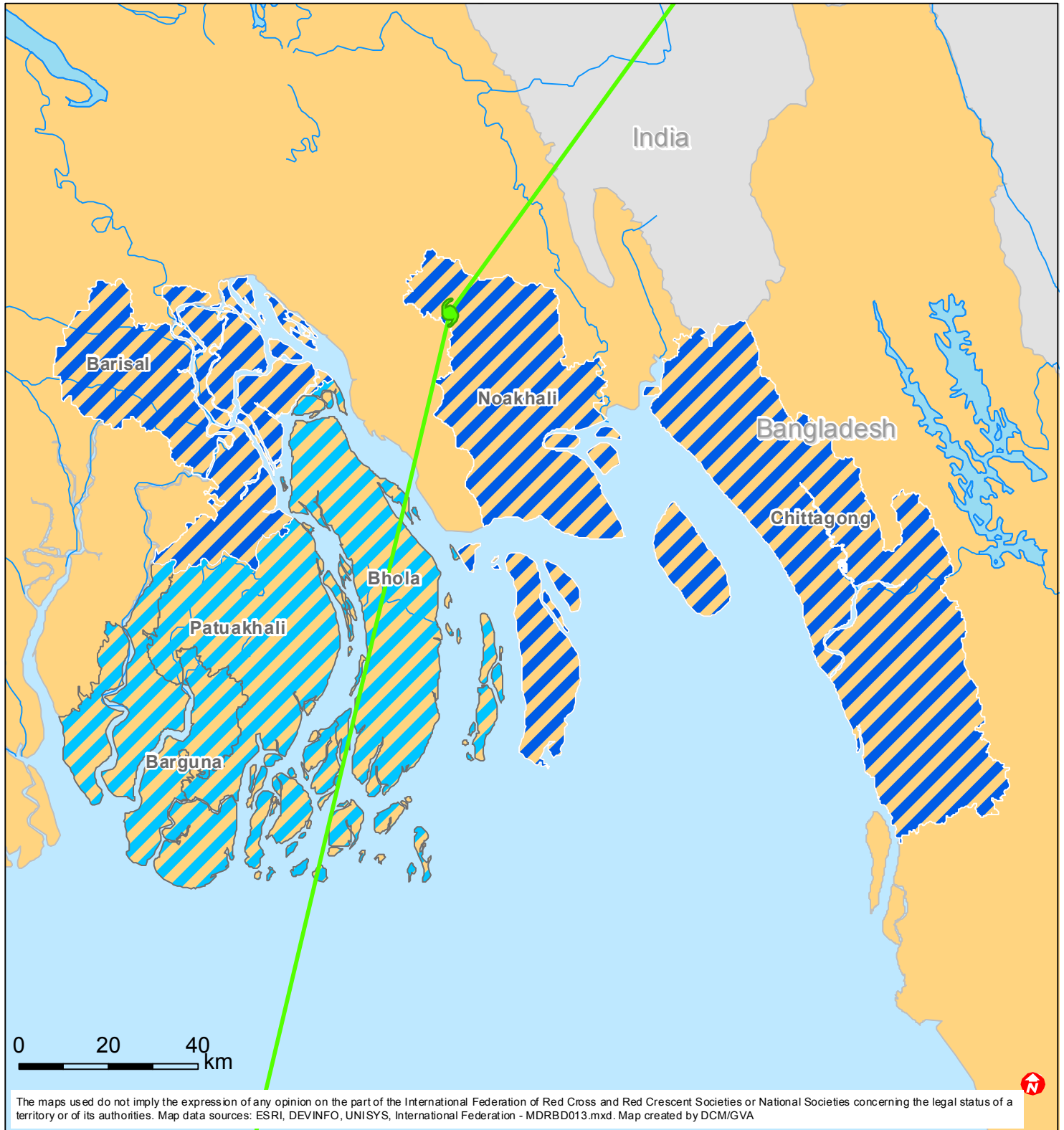
18.05.13



MDRBD013 Bangladesh : Tropical Cyclone Mahasen

Budget Group	DREF Grant Budget CHF
Shelter - Relief	137,000
Water, Sanitation & Hygiene	26,500
Cash Disbursements	100,000
Total RELIEF ITEMS, CONSTRUCTION AND SUPPLIES	263,500
Storage, Warehousing	750
Distribution & Monitoring	12,750
Transport & Vehicle Costs	3,750
Total LOGISTICS, TRANSPORT AND STORAGE	17,250
Travel	3,750
Office Costs	1,219
Communications	938
Financial Charges	375
Total GENERAL EXPENDITURES	6,281
Programme and Services Support Recovery	18,657
Total INDIRECT COSTS	18,657
TOTAL BUDGET	305,688



Bangladesh: Tropical storm Mahasen



-  Districts likely to be affected by storm
-  Requirement being identified