

www.ifrc.org  
Saving lives,  
changing minds.

# Disaster relief emergency fund (DREF) Sudan / North Kordofan and South Kordofan Population Movement

 International Federation  
of Red Cross and Red Crescent Societies

**DREF operation n° MDRSD017**  
**GLIDE n° OT-2013-000057-SDN**  
**16 May, 2013**

The International Federation of Red Cross and Red Crescent (IFRC) Disaster Relief Emergency Fund (DREF) is a source of un-earmarked money created by the Federation in 1985 to ensure that immediate financial support is available for Red Cross and Red Crescent emergency response. The DREF is a vital part of the International Federation's disaster response system and increases the ability of National Societies to respond to disasters.

**CHF 282,784 has been allocated from the IFRC's Disaster Relief Emergency Fund (DREF) to support the Sudanese Red Crescent Society in delivering immediate assistance to some 11,480 IDPs. Unearmarked funds to repay DREF are encouraged.**

#### **Summary:**

Within a few days of the first direct talks between Sudan People's Liberation Movement – North (SPLM-N) and the Government of Sudan on 25 April, armed attacks by Sudanese Revolutionary Front (a coalition of armed movement that includes SPLM-N) were reported in several locations within North and South Kordofan State. This resulted in significant civilian displacements and destruction of a power plant, petrol stations and a telecommunications tower. The first attacks were reported to have started in the Abu Kershola area of Rashad locality, South Kordofan. Additional significant civilian displacement was reported following further attacks in Umm Ruwaba town, 147 km southeast of the North Kordofan capital, El Obeid, and Allakarim, Simeh and Sidrah villages, 90km east of El Obeid. By the 9 May 2013, according to UNOCHA 45,077 individuals were estimated to be severely affected and displaced to neighbouring states. Based on Sudanese Red Crescent Society (SRCS) assessments, an estimated 30,000 affected people in need of urgent humanitarian assistance.



IDPs from Abu Kershola of South Kordofan take refuge in school in Al Rahad locality of North Kordofan Photo by: **SRCS**

Rapid assessments by the SRCS Emergency Action Teams at headquarters and branch level highlighted the urgent humanitarian needs of the affected population. SRCS volunteers assisted affected people to reach safety within the schools of Al Rahad locality and provided them with health care and non-food items supply.

Through this DREF, SRCS will support 11,480 individuals with non-food items, emergency health, and water, sanitation and hygiene services.

This operation is expected to be implemented over 4 months, and will therefore be completed by September, 2013; a final report will be made available three months after the end of the operation (by

December, 2013).

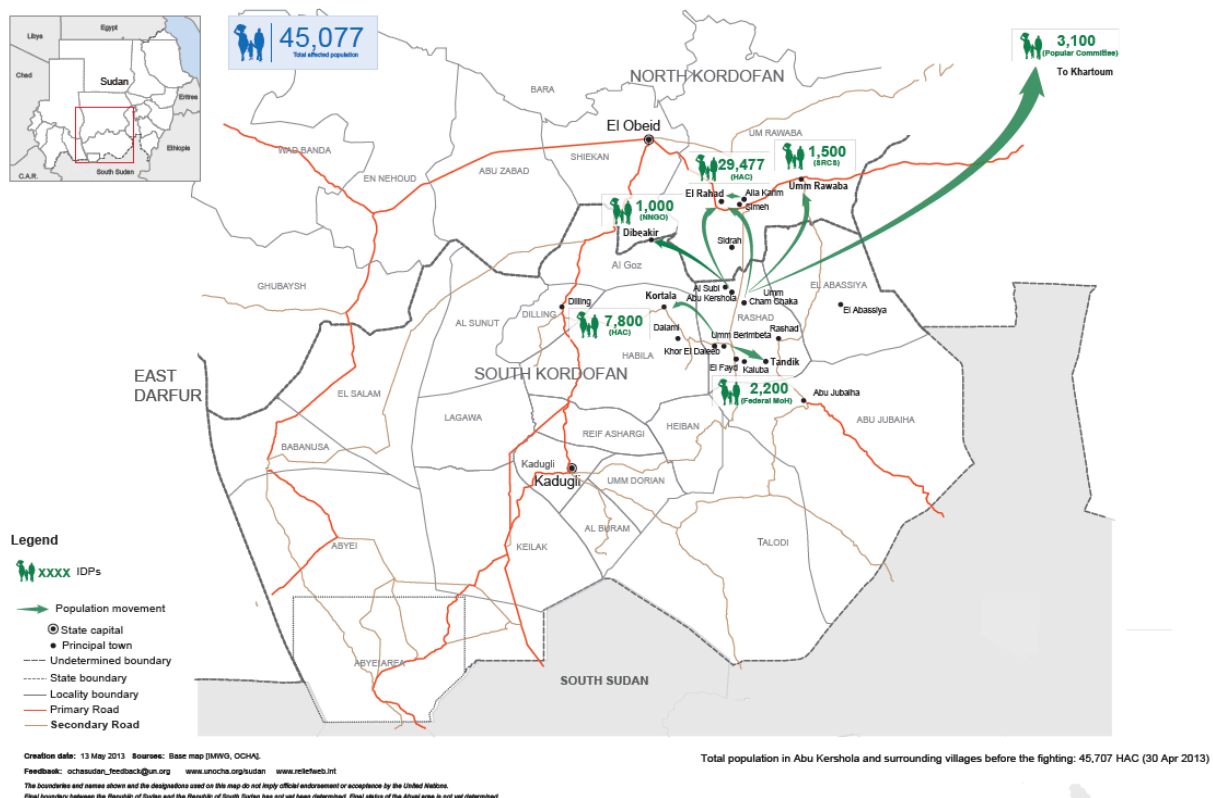
[<click here for the DREF budget; here for a map of the affected area; or here for contact details>](#)

## The situation

On the 14 April, one civilian was killed and seven injured when the [SPLM-N shelled Kadugli town in](#) South Kordofan. The fighting between the Sudan Armed Forces (SAF) and the SPLM-N broke out in the Dander area, about 45 km northeast of Kadugli town, resulted in the displacement of 17,000 people to Kadugli town, El Kuok town and villages surrounding Dandur. Humanitarian assistance was provided to the affected population by the Sudanese Red Crescent Society (SRCS) and other humanitarian organizations such as Mubadiroon and SOS who provided non-food relief assistance. The armed clashes progressed eventually to surrounding areas and on the 27 of April 2013, the clashes reached the town of Abu Kershola in South Kordofan, causing damages, death of more than 100 people and immediate displacement of estimated 950 families (5,700 individuals) who were forced to flee to Alrahad and Umm Rawaba localities in North Kordofan state (70 kilometres north).

On the same day, the armed groups marched into Umm Rawaba town in North Kordofan State (147 kilometres southeast of the state capital El Obeid) coming through Al simeh and Allahkarim areas. The attack caused panic amongst the people and resulted in death of two policemen, injuring four students, and displaced a large part of the population to surrounding areas. The attack caused damage in vital infrastructure (electricity and water stations), which caused disruption in electricity and water services in the town in addition to other facilities that was affected such as the Bank of Umm Rawaba and the patrol station.

The IDPs from Abu Kershola of South Kordofan, with assistance from SRCS volunteers and local authority, took shelter in six schools in Al Rahad locality of North Kordofan. Daily update from the SRCS field teams indicated that the number of IDPs in Al Rahad locality and neighbouring areas has reached up to 30,000 individuals. These people are in need of urgent humanitarian assistance, the majority arrived in psychological distress and poor health conditions from the long distances walked, especially children, women and elderly people who suffered from severe dehydration, along with other illnesses. On top of deteriorated health status and poor housing conditions, lack of safe drinking water is also another major difficulty facing the IDPs in their new settlement. In addition to 228 individuals who were reported missing there were 68 children reported missing.



Numbers of IDPs in North Kordofan and South Kordofan as of 13 May (Source UNOCHA).

The Sudanese Red Crescent Society was the first national humanitarian organisation to respond to the IDPs initial needs. While 250 SRCS volunteers were mobilised by North Kordofan branch team to assist the displaced people in the schools by providing food and non-food assistance, water and health care services. The emergency action teams (95 members) at the North Kordofan branch-level supported, by a team from the headquarters, conducted a rapid needs assessment on the 29 April 2013 in Al Rahad locality. The assessment identified the affected population and their needs, including shelter, health services, and water, sanitation and hygiene services.

## Coordination and partnerships

SRCS has been coordinating with the lead government authorities responsible for humanitarian assistance and other line ministries such as Ministry of Health (MoH) and the Humanitarian Aid Commission (HAC).

SRCS has informed and coordinated with all Red Cross Red Crescent Movement partners including ICRC, IFRC and the PNS present in Sudan (including Spanish Red Cross, Danish Red Cross, Norwegian Red Cross, Netherland Red Cross, German Red Cross, Qatar Red Crescent and Saudi Red Crescent) discussing the scope and context of the on-going humanitarian situation of the affected population. SRCS hold regular bilateral meetings with movement and non-movement partners including National Non-Governmental Organizations (NNGOs) and International NGOs (INGOs) and United Nations (UN) specialised agencies such as WHO and UNICEF, to discuss the situation and planned response.

The IFRC role in Sudan is representation, coordination and facilitation of the activities of IFRC members with an interest in supporting the humanitarian efforts of the SRCS. This DREF operation is launched to respond to the urgent needs of the affected people and will focus on providing relief, water, sanitation and hygiene services. IFRC will provide technical assistance in planning, implementing, monitoring and evaluating the DREF operation through its Country office in Sudan and with support from its Regional and Africa Zone offices and Partner National Societies.

SRCS, in collaboration with Ministry of Health and national NGO Mubadiroon, is providing basic health care in three health clinics with support from 30 SRCS volunteers; including two medical doctors. Ministry of Health is operating two clinics where medicine is provided from Federal MoH and UNICEF. SRCS is also carrying out some WatSan activities along with other humanitarian agencies such as Save the Children - Sweden and UNICEF, with clean water being provided by UNICEF and Plan Sudan. SRCS, with local authorities and host community, provided food aid for the first arrivals. Food is being provided by WFP and the HAC.

A number of different organizations are involved in providing NFIs and emergency shelter. While UNHCR is the lead agency, support in terms of NFIs or shelter is also being provided by UNICEF, SRCS, Save the Children – Sweden, SCCW, Mubaddiron, Concern and NCA. The Government is reluctant to establish more temporary camps at this stage, and is hoping to find longer term shelter alternatives.

IFRC continuously engages both its Movement and non-Movement partners through sharing of available information and holding of bilateral or joint meetings with SRCS

## Red Cross and Red Crescent action

On the 29 April 2013, the Sudanese Red Crescent Society (SRCS) branch in North Kordofan conducted an initial rapid assessment jointly with Ministry of Health (MoH), World Health Organization (WHO), Humanitarian Aid Commission (HAC) South & North Kordofan States and Mubadiroon (NNGO) to evaluate the situation of the on-going displacement of affected population identifying initially 5,700 individuals as in need of urgent humanitarian assistance.

By the 30 April 2013, the SRCS issued an alert on the Disaster Management Information System (DMIS) followed by two information bulletins issued on 1 May and 3 May 2013 updating the humanitarian situation as a result from the recent incident in North and South Kordofan.

SRCS immediately activated the emergency rooms at Headquarter and branch level for meetings on a daily basis to monitor the situation and coordinate the basic response by SRCS so far. SRCS also activated the Emergency Action Teams in North Kordofan branch to deliver immediate assistance and support, based on collaboration with other partners.

Also on the 30 April 2013, the SRCS sent an Emergency Response Team (composed of Disaster Management, Health and WatSan technical staff), from Khartoum to North Kordofan to provide technical support, verify information, and to identify the unmet needs.

The SRCs North Kordofan distributed the following NFIs in Alrahad camps from SRCS stock:

- 1,000 tarpaulins.
- 1,000 mosquito nets.
- 1,000 water jerry cans.
- 1,620 pcs of soap.
- Distribution of 177 tarps, 354 blankets, 177 jerry cans and 354 sleeping mats provided by UNHCR to 177 HHs in Elrijaila village south Omrowaba.
- Distribution of 2,374 plastic sheets, 2,374 jerry cans, 2,374 cooking sets, 4,750 blankets and 4,750 sleeping mats provided by UNHCR for 2,374 households in Alrahad and Omrawaba.

North Kordofan Branch continued with the registration and counting of IDPs within the 13 settlement. North Kordofan SRCS branch mobilized additional 96 volunteers and staff and increased the local volunteers from Alrahad up to 250 to take part in the following activities:

- Distribution of food and NFIs in the camps
- Conduct 6 hygiene awareness and health education sessions among the IDPs.
- Tracing for separated and unaccompanied children.
- Water chlorination of existing wells/water tanks.
- The following items were provided by Fed Care (NGO) and distributed to the camps by SRCs volunteers.

No.	Item	Details
1	Plastic bucket	15 pcs
2	Wheel barrow	4 pcs.
3	Empty plastic sacks	100 pcs
4	Hoe	30 pcs
5	Spade	10 pcs
6	rake	41 pcs.
7	Male child suit	209 pcs.
8	Female child suit	80 pcs.
9	blanket	30 pcs.
10	Baby Powder milk	40 tin
11	Sport suit	405 pcs.
12	Shoes	85 pairs

- UNHCR contributed NFIs for 2,374 households.
- The host community in Kimli village is supporting the IDPs with food and water.
- Mubadiroon (NNGO) supported with drugs and running of two clinics.
- HAC is the lead body contributed with food and NFIs.
- 45 children, all are under 5 years, (including one seven month old child) were collected and evacuated from a village near Aburarshola to Alrahad by a woman volunteer.

## The needs

### Immediate Needs:

On 29 April 2013, the SRCS conducted joint needs assessment with WHO, MoH, Humanitarian Aid Commission (HAC) South & North Kordofan States, and Mubadiroon organization in North Kordofan. The IDPs according to the rapid needs assessment were 11,480 individuals in urgent need of shelter, food and non-food aid, health care, water, sanitation and hygiene services. However, the influx of the IDPs is reported to be increasing progressively on a daily basis, and while preparing this DREF it is reported by SRCS field teams to have reached up to 30,000 individuals.

*Shelter:* Apart from IDPs who are hosted by the community, according to the assessment mentioned above, there were about 11,480 individuals that have been identified to be displaced within Al Rahad locality. The

majorities are women and children under 5 years old (see table -1) and they are currently living in poor housing conditions and taking shelter in six schools within Al Rahad town.

Table 1 shows initial statistic data from the 29 April of the IDPs distributed in six schools in Al Rahad town of North Kordofan

Location	# of families	# of individuals	Male	Female	Children under five	
					Boys	Girls
Azhari school	666	4017	1545	1778	328	366
Bint khuwaylid school	742	4537	1432	2206	434	465
Al-Khansa school	393	2578	1057	1165	163	193
School of Eastern market	21	120	45	40	15	20
High school for boys	20	120	40	45	15	20
Southern School	18	108	30	40	18	20
<b>Total</b>	<b>1,860</b>	<b>11,480</b>	<b>4,149</b>	<b>5,274</b>	<b>973</b>	<b>1,084</b>

*Relief:* The IDPs are currently taking shelter within the schools and they are in need of food and non-food assistance. SRCS delivered some food and non-food items for 500 families (1,000 mosquito nets, 1,000 tarpaulins, 1,000 water jerry can, 1,620 bar soap) yet the needs are progressively increasing as tabled below. Note, that replenishment of these items is not being requested under this DREF operation.

*Health:* The displaced people who have currently settled in these schools arrived in poor psychological and physical condition. The majority suffer from severe dehydration and exhaustion, respiratory tract infection, urinary tract infection, delivery with complications, and some with swollen feet from three days distance walking. Some 80% of the reported cases are children suffering from diarrhea, dehydration and respiratory tract infection, 15% women with dehydration, and 3% elderly group with diabetes, high blood pressure and abdominal disturbance, and others were wounded and some have fractures that needed urgent referral to the hospitals. About 14 cases with severe illness were referred immediately to the main hospital in the area (Al Rahad hospital) to receive urgent special medical care.

*Water, sanitation and hygiene:* The assessment team found four water reservoirs and 27 water tanks (500 litre volume), however there is a severe lack of safe drinking water and water for domestic use in the settlement area as the currently available sources are not sufficient to fulfill the needs of the growing number of the IDPs. There are a limited number of latrines and currently the IDPs are using the school toilets or are defecating in surrounding bushes. To prevent disease outbreak, there is also a need for hygiene promotion and basic hygiene items (e.g. soap) for the IDP population.

*Beneficiary selection:* The National Society is currently coordinating with the local authorities such as HAC and community leaders to determine the most vulnerable to be assisted with DREF support targeting those affected IDPs sheltered in the schools with the following criteria:

- Female or child headed families.
- Unaccompanied minors and vulnerable individuals
- Affected families and individuals who lost their property and have proven difficulties to recover by their own means
- Families and individuals that are not receiving any support from other agency or institutions.

## The proposed operation

SRCS is providing non-food aid, sanitation services (solid waste management) and basic health care services including hygiene promotion. SRCS supports three health clinics using SRCS two medical doctors, and another three medical doctors from Mubadiroon, and two from Ministry of health, two SRCS pharmacists and two medical assistants from SRCS and MoH, along with 28 SRCS volunteer. This DREF operation will deliver immediate assistance in relief (basic non-food items) for 10,000 IDPs in Al Rahad area, as well as sanitation and hygiene promotion and logistics as tabled below. This operation will be supported by 150 SRCS volunteers, across all sectors, including the Emergency Action Teams and technical staff at branch and headquarters level.

This DREF operation shall respond to the needs outlined above according to international standards and will be managed in accordance with the SRCS strategy and policy and will be adherent to the Red Cross Red

Crescent Fundamental Principles and locally agreed distribution standards. The gender aspect and people with special needs will be considered during the implementation of this operation.

The health promotion campaign will be conducted through focus group discussions within the IDP settlements at health clinic waiting areas. Other activities will complement the emergency health objective, including psychosocial support, first aid, treatment of severe dehydration (using ORS and IV fluids) and safe delivery are already being supported using USAID resources. Additionally, 150 volunteers will be trained on health, sanitation and hygiene promotion related topics.

SRCS volunteers and staff will be highly visible, using jackets with the protective emblem; produced under a previous appeal. As the situation is volatile and potentially insecure, identification and acceptance will be important security tools.

<b>Shelter, settlements and non-food items</b>	
<b>Outcome: Vulnerability is reduced through provision of emergency shelter and relief assistance (non-food items) to 10,000 beneficiaries in North Kordofan state.</b>	
<b>Outputs (expected results)</b>	<b>Activities planned</b>
<ul style="list-style-type: none"> <li>10,000 individuals in North Kordofan, receive essential relief items.</li> <li>Coordinated mobilization and distribution of relief goods take place in the targeted areas.</li> </ul>	<ul style="list-style-type: none"> <li>Conduct additional rapid emergency needs and capacity assessments as per needs.</li> <li>Procure, transport and distribute non-food relief items to identified beneficiaries. (NFIs one per two people include: tarpaulins and shelter fixings, blankets, mosquito nets, sleeping mats, jerry cans and kitchen set).</li> <li>Procurement and distribution of hygiene kits (1 kit per two people) to the most vulnerable</li> <li>Mobilize 150 SRCS volunteers to carry out relief operation (assessment, distribution, including in kind food distribution with WFP).</li> <li>Distribute relief supplies and control supply movements from point of dispatch to end user.</li> <li>Monitor and evaluate the relief activities and provide reporting on relief distributions.</li> <li>Develop an exit strategy.</li> </ul>

<b>Emergency health</b>	
<b>Outcome: The health risks of the emergency on the affected population is reduced through the provision of preventive, community-level and curative services to 11,480 beneficiaries in North Kordofan for at least four months</b>	
<b>Outputs (expected results)</b>	<b>Activities planned</b>
<ul style="list-style-type: none"> <li>Health services are supported at the primary health care levels to meet the health needs of the 11,480 people.</li> <li>The resilience of the community is improved through better health awareness, knowledge and behaviour.</li> </ul>	<ul style="list-style-type: none"> <li>Mobilize and train 150 volunteers to initiate health promotion campaign within the affected population focusing on prevention and control of common communicable diseases such as Malaria, Acute Watery Diarrhoea, bloody diarrhoea, dermatitis and other outbreaks likely to occur during emergency situations.</li> </ul>

<b>Water, sanitation, and hygiene promotion</b>	
<b>Outcome: The risk of water and sanitation related diseases has been reduced through the provision of sanitation and hygiene promotion to 11,480 beneficiaries in North Kordofan</b>	
<b>Outputs (expected results)</b>	<b>Activities planned</b>

<ul style="list-style-type: none"> <li>Hygiene promotion activities and adequate solid waste management services are provided to target population within the settlements.</li> </ul>	<ul style="list-style-type: none"> <li>Training for 150 volunteers in health, sanitation and hygiene promotion</li> <li>Procurement of 40 sets of tools (shovels, protective clothing etc.) for solid waste management.</li> <li>Conduct solid waste (rubbish) clean-up campaigns in the IDP settlements.</li> <li>Conduct hygiene promotion sessions with particular focus on household water treatment and safe storage, and personal hygiene (including correct use of water treatment products such as chlorination tablets which are being distributed by other partners).</li> </ul>
---	--

<b>Logistics</b>	
<b>Outcome: Well supported relief operations, ensuring delivery of a range of relief items in line with the operational priorities.</b>	
<b>Outputs (expected results)</b>	<b>Activities planned</b>
<ul style="list-style-type: none"> <li>Coordinated mobilization of relief goods; coordinated reception of all incoming goods; coordinated Warehousing; and coordinated and efficient dispatch of goods to the final distribution points.</li> </ul>	<ul style="list-style-type: none"> <li>Provide logistical support in transportation of supplies, staff and volunteers in the response sites of the crisis.</li> <li>Procure and mobilize locally relief stocks and control supply movements to distribution points.</li> </ul>

<b>Communication</b>	
<b>Outcome: The profile and position of the host National Society and the IFRC are enhanced to support this and future emergency operations.</b>	
<b>Outputs (expected results)</b>	<b>Activities planned</b>
<ul style="list-style-type: none"> <li>General population and key stakeholders well informed about Sudanese Red Crescent humanitarian work in Sudan</li> </ul>	<ul style="list-style-type: none"> <li>Coordinate direct outreach with the host National Society and the national and international media as appropriate.</li> </ul>

#### **Monitoring and evaluation:**

Quality will be ensured through use of the IFRC global tools in Planning, Monitoring, Evaluation and Reporting (PMER). This will include review of documentation such as detailed narrative reports from the field to the branches and headquarters. It will also make use of initial assessments and field visits to monitor progress and adjust approaches. Additionally, meetings with key stakeholders, performance reporting, field visits to follow progress on implementation of activities will be done on a regular basis.

These monitoring tasks will be carried out by SRCS and IFRC staff at branches and headquarters level. IFRC will also make use of its Regional, Africa Zone and Global network of expertise to support surge capacity for various aspect of the DREF, including monitoring and evaluation.

To ensure ownership SRCS field staff at locality level and local community members (both men and women) will also be monitoring and following jointly the activities implementation and outcomes. Furthermore, the beneficiaries in the targeted areas will be surveyed to find out about their satisfaction with services received by them from this DREF. The data collected during field visits will be verified and assessed at the field and headquarter level for reporting or decision making purposes by branch team and headquarters staff. Various communication means and tools will be used to facilitate the sharing of information according to the needs of the area.

## Contact information

### For further information specifically related to this operation please contact:

- **In Sudan:** Osman Gafer Abdalla, Secretary General Sudanese Red Crescent Society; Phone: +249.8.378.48.89 email: [SRCS\\_sg@yahoo.com](mailto:SRCS_sg@yahoo.com)
- **In Sudan:** IFRC Country Representation Office; Aisha Maulana, Country Representative; Khartoum; Phone: +249.9.123.04.023; Email: [aisha.maulana@ifrc.org](mailto:aisha.maulana@ifrc.org)
- **IFRC Regional Representation:** Finnjarle Rode, Regional Representative for East Africa; Nairobi; phone: +254 20 283 5000; email: [finnjarle.rode@ifrc.org](mailto:finnjarle.rode@ifrc.org)
- **IFRC Africa Zone:** Daniel Bolaños, Disaster Management Coordinator for Africa; Nairobi; phone: +254 (0)731 067 489; email: [daniel.bolanos@ifrc.org](mailto:daniel.bolanos@ifrc.org)
- **IFRC Geneva:** Christine South, Operations Quality Assurance Senior Officer; phone: +41.22.730.45 29; email: [christine.south@ifrc.org](mailto:christine.south@ifrc.org)
- **IFRC Regional Logistics Unit (RLU):** Marie-Laure de Quina Hoff, Senior Logistics Officer, Dubai; phone +971 4 4572993; Fax: +971 4 4572994, email: [marielaure.dequinahoff@ifrc.org](mailto:marielaure.dequinahoff@ifrc.org)

### For Resource Mobilization and Pledges:

- **IFRC Africa Zone:** Loïc de Bastier, Resource Mobilization Coordinator for Africa; Addis Ababa; phone: +251-93-003 4013; fax: +251-11-557 0799; email: [loic.debastier@ifrc.org](mailto:loic.debastier@ifrc.org)

### For Performance and Accountability (planning, monitoring, evaluation and reporting)

- **IFRC Africa Zone:** Robert Ondrusek, PMER/QA Delegate for Africa; Nairobi; phone: +254 731 067277; email: [robert.ondrusek@ifrc.org](mailto:robert.ondrusek@ifrc.org)

---

## How we work

All IFRC assistance seeks to adhere to the Code of Conduct for the International Red Cross and Red Crescent Movement and Non-Governmental Organizations (NGOs) in Disaster Relief and the Humanitarian Charter and Minimum Standards in Disaster Response (Sphere) in delivering assistance to the most vulnerable.

The IFRC's vision is to inspire, encourage, facilitate and promote at all times all forms of humanitarian activities by National Societies, with a view to preventing and alleviating human suffering, and thereby contributing to the maintenance and promotion of human dignity and peace in the world.

[www.ifrc.org](http://www.ifrc.org)  
Saving lives, changing minds.



The IFRC's work is guided by Strategy 2020 which puts forward three strategic aims:

1. Save lives, protect livelihoods, and strengthen recovery from disaster and crises.
  2. Enable healthy and safe living.
  3. Promote social inclusion and a culture of non-violence and peace.
-

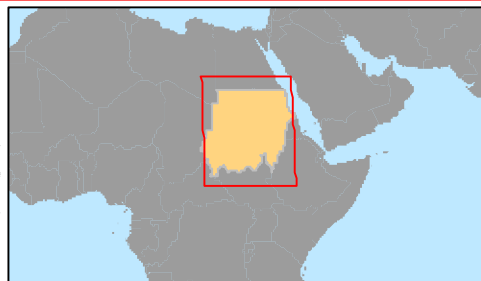
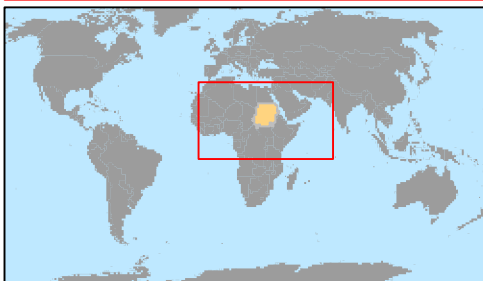
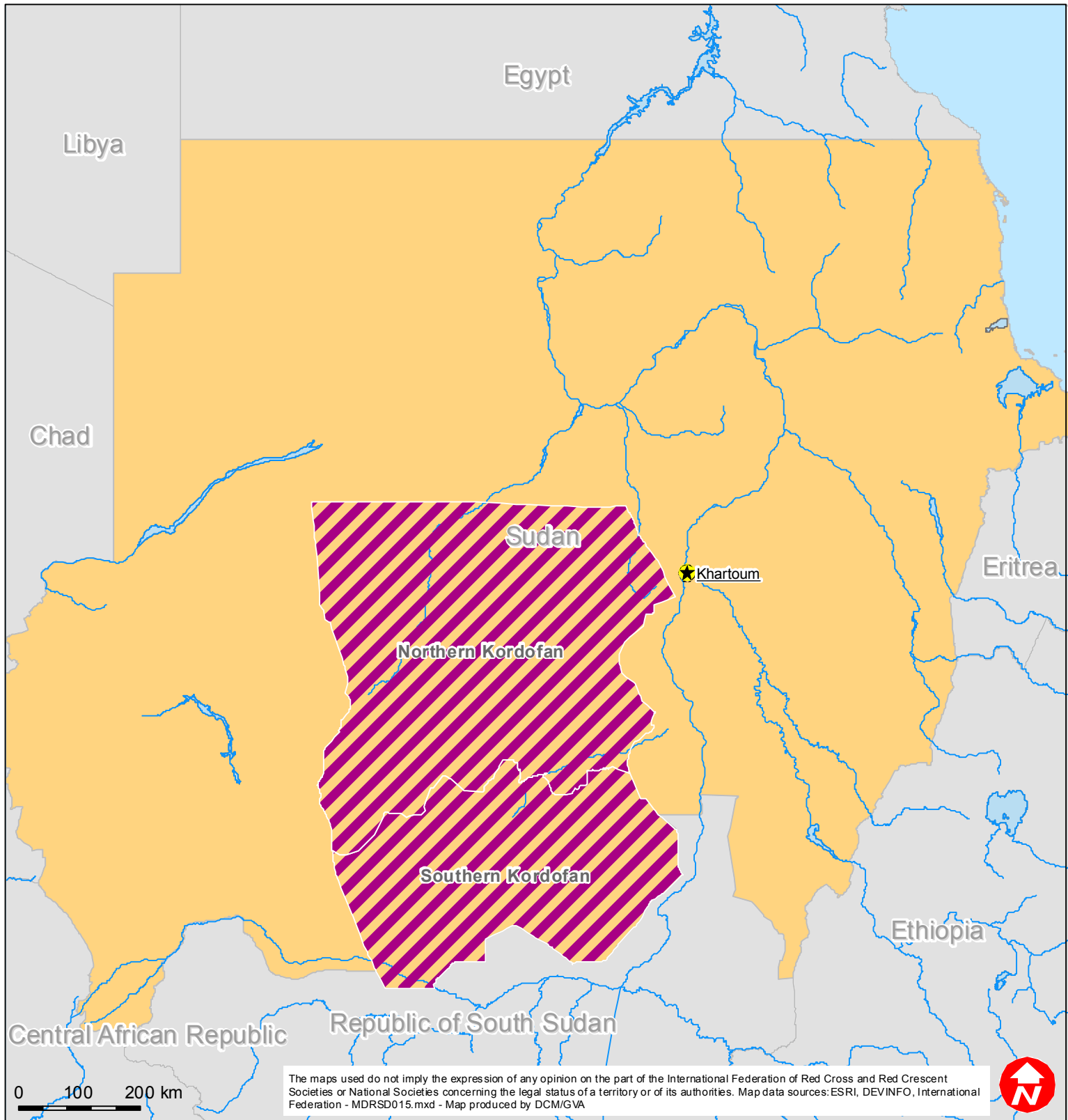
# DREF Operation


Kordofan Population Movement (MDRSD017)

Budget Group	DREF Grant Budget CHF
Shelter - Relief	85,000
Shelter - Transitional	0
Construction - Housing	0
Construction - Facilities	0
Construction - Materials	0
Clothing & Textiles	40,000
Food	0
Seeds & Plants	0
Water, Sanitation & Hygiene	4,200
Medical & First Aid	0
Teaching Materials	500
Utensils & Tools	40,000
Other Supplies & Services	6,169
Emergency Response Units	0
Cash Disbursements	0
<b>Total RELIEF ITEMS, CONSTRUCTION AND SUPPLIES</b>	<b>175,869</b>
Land & Buildings	0
Vehicles Purchase	0
Computer & Telecom Equipment	0
Office/Household Furniture & Equipment	0
Medical Equipment	0
Other Machinery & Equipment	0
<b>Total LAND, VEHICLES AND EQUIPMENT</b>	<b>0</b>
Storage, Warehousing	4,106
Distribution & Monitoring	2,000
Transport & Vehicle Costs	7,400
Logistics Services	0
<b>Total LOGISTICS, TRANSPORT AND STORAGE</b>	<b>13,506</b>
International Staff	0
National Staff	0
National Society Staff	0
Volunteers	54,200
<b>Total PERSONNEL</b>	<b>54,200</b>
Consultants	0
Professional Fees	0
<b>Total CONSULTANTS &amp; PROFESSIONAL FEES</b>	<b>0</b>
Workshops & Training	6,750
<b>Total WORKSHOP &amp; TRAINING</b>	<b>6,750</b>
Travel	0
Information & Public Relations	5,200
Office Costs	500
Communications	4,500
Financial Charges	2,000
Other General Expenses	3,000
Shared Support Services	0
<b>Total GENERAL EXPENDITURES</b>	<b>15,200</b>
Partner National Societies	0
Other Partners (NGOs, UN, other)	0
<b>Total TRANSFER TO PARTNERS</b>	<b>0</b>
Programme and Supplementary Services Recovery	17,259
<b>Total INDIRECT COSTS</b>	<b>17,259</b>
<b>TOTAL BUDGET</b>	<b>282,784</b>
<b>Available Resources</b>	
Multilateral Contributions	
Bilateral Contributions	
<b>TOTAL AVAILABLE RESOURCES</b>	<b>0</b>
<b>NET EMERGENCY APPEAL NEEDS</b>	<b>282,784</b>



## Sudan: Population movement



 Affected States