

www.ifrc.org
Saving lives,
changing minds.

Disaster relief emergency fund (DREF) Sierra Leone: Fire

 International Federation
of Red Cross and Red Crescent Societies

DREF operation n° MDRSL004
GLIDE n° FR-2013-000003-SLE
16 January, 2013

The International Federation of Red Cross and Red Crescent (IFRC) Disaster Relief Emergency Fund (DREF) is a source of un-earmarked money created by the Federation in 1985 to ensure that immediate financial support is available for Red Cross and Red Crescent emergency response. The DREF is a vital part of the International Federation's disaster response system and increases the ability of National Societies to respond to disasters.

CHF 167,769 has been allocated from the IFRC's Disaster Relief Emergency Fund (DREF) to support Sierra Leone National Society in delivering immediate assistance to some 2,253 beneficiaries. Un-earmarked funds to repay DREF are encouraged.

Summary: Currently, Sierra Leone is facing heightened risks of fire outbreaks due to the hot and dry season. During the first week of January 2013, houses in five communities of Bompilia, Dandabu, Robenk, Gbarefeh and Blamah Gbanie were completely burned down by fire, leaving 2,253 persons without shelter and any other means of accommodation. The current weather involving the hot and dry winds from Sahara expose the displaced families to very harsh conditions and therefore require an urgent response.



Houses destroyed by fire in affected villages in Sierra Leone/Photo SL RC

Sierra Leone Red Cross (SL RC) has mobilized 20 staff and volunteers who are currently providing first aid services in the affected communities, and assessing the situation.

With this DREF operation, SL RC intends to undertake a detailed situation and needs assessment while providing emergency assistance to the families left without shelter. The emergency assistance will include temporary shelter, basic household items for displaced families and first aid services in the affected communities.

Since this hot and dry season particularly heightens the risk for outbreaks of fires, this DREF also includes a preparedness component through increasing the capacity of the national

society to respond to disasters involving fire, and raising awareness of affected families and high risk populations about the risk of fires and how to minimize the risks.

This operation is expected to be implemented over three months, and will therefore be completed by 15 April 2013. A final report will be made available three months after the end of the operation (by 15 July 2013).

[<click here for the DREF budget; contact details; map of the affected area>](#)

The situation

Sierra Leone is currently experiencing the Harmattan wind, (December to March) which is a dry dusty wind blowing across the Sahara desert reaching the costal West African countries usually carrying large amount of dust and causing bush fires leading to the burning of huge farmlands, villages and other environmental entities.

On the 5 and 6 January, fire outbreaks in Bompilia village (Bonthe district) and Dandabu village (Pujehun district), made 550 persons in Bompilia and 600 persons in Dandabu homeless and deprived of basic living standards.

One day later, on the 7th of January, fires in Robenk (Port-Loko district) displaced 400 more persons, and on the 11th January 2013 shortly after, the communities of Gbarefeh (Koinadugu district) and Blamah Gbanie (Bo district) reported similar events of rapidly spreading fires making additional 650 persons displaced (500 persons and 150 persons from respective community). The families displaced by the fires have not only lost their houses, but also their belongings and subsistence resources, such as fishing nets and tools. Currently, the number of displaced persons reaches 2,253 (estimated 450 families) from the five communities.

District	Village	Destroyed houses	No. of displaced people	Est. no. of families
BONTHE	Bompilia	50	550	110
PUJEHUN	Dandabu	46	600	120
PORT-LOKO	Robenk	80	400	80
KOINADUGU	Gbarefeh	51	500	100
BO	Blama Gbanie	52	203	40
Total		279	2253	450

There is a heightened risk of continued outbreaks of similar fires throughout the country, due to the current weather conditions.

The government Disaster Management Department (DMD) has formed a crisis unit to address the situation, and is trying to mobilize resources.

SL RC has mobilized its volunteers who are currently providing first aid services in the communities and informing on the situation.

Coordination and partnerships

The DMD of the government has put in place a national crisis unit to manage the situation, in which unit the SL RC is participating. The government is currently trying to mobilize resources and engage partners, including SL RC.

The government and the SL RC are currently the main actors that are active in the field since the occurrence of the disaster. World Vision has pledged to provide some support to the affected families in Dandabu, however the support is limited to clothing and school books for children.

The SL RC has approached different stakeholders to support relief assistance to the disaster victims, however as it stands now, in order to be able to provide assistance as per the needs of the displaced families and requests from the government, SL RC would need support from the IFRC to carry out this emergency response operation.

Red Cross and Red Crescent action

SL RC has mobilized twenty members (executives, first aid workers and volunteers) who are active in the field and are currently providing assistance to affected people (First Aid services, damage/needs assessment).

Currently, Sierra Leone Red Cross Society is trying to mobilize resources to support the disaster affected families.

SL RC intends to perform a detailed situation and needs assessment which will inform possible needs for further action while at the same time ensure that the displaced families have temporary shelter protecting them from the weather conditions and decrease their vulnerability by providing basic household items.

Due to the heightened risks of fires, SL RC also intends to build the capacity of the national society to respond to these types of disasters, while at the same time trying to reduce risks through awareness raising and preventive messages. SL RC intends to mobilize 60 volunteers to support implementation of the DREF operation.

SL RC is keeping movement partners updated on the situation.

The IFRC will provide technical support to SL RC in planning the operation as well as logistical support for procurement and transport of relief items from Dakar (kitchen sets will be sent from Dakar). One Regional Disaster Response Team (RDRT) staff with shelter and relief expertise will be deployed for two months to provide training of volunteers and support the implementation of the operation. Furthermore, the IFRC will monitor and review/evaluate the emergency operation.

The needs

The fires causing extensive damages in the five communities of Bompilia, Dandabu, Robenk, Gbarefeh and Blamah Gbanie has left 2,253 (estimated 450 families) persons homeless without any type of shelter. The families have lost all of their belongings, including means to provide for themselves, and are currently finding themselves in a very vulnerable situation exposed to the harsh weather conditions caused by the Harmattan hot and dry winds. Among the population are children and vulnerable individuals that are suffering from the current situation.

Additionally, due to a considerably heightened risk for fire outbreaks relating to the hot and dry season, people are at risk for being injured and losing their homes and belongings to fires.

The selected beneficiaries:

The beneficiaries of this operation are 2,253 people from five communities (Bompilia, Dandabu, Robenk, Gbarefeh and Blamah Gbanie) in five districts, who have had their houses burnt down by the fire and lost all of their belongings. Among the families are women, children and vulnerable individuals.

Furthermore, high risk communities in the five affected districts at risk for being injured or displaced by fires, will be targeted by preventive and mitigation messages.

(A detailed needs assessment will be carried out in the initial stage of the intervention which will provide more in depth information on the beneficiaries and situation.)

The proposed operation

The proposed DREF operation includes following components:

- 1) Detailed situation and needs assessment in order to provide a better understanding of real needs in the affected areas,
- 2) Emergency shelter and basic household items provided to 2,253 displaced and vulnerable persons during the emergency phase of the operation.
- 3) Emergency health interventions, including first aid and referral services to affected individuals
- 4) Increased preparedness through capacity building of the national society for fire emergency response, and preventive and mitigation messages provided to high risk communities in the five affected districts, aiming at reducing the risks for fires.

In order to carry out the operation 60 volunteers will be mobilized and provided with a rapid orientation in relief distribution and assessment methodology. Furthermore, the volunteers will be trained in fire response, mitigation and prevention as a way of preparing the national society for effective fire disaster response and how to convey preventive messages to the affected communities, during this time of heightened alert for fire outbreaks.

Needs assessment

Outcome: SL RC has a better understanding of the situation and needs of the five targeted communities affected by fire

Outputs (expected results)

- The SL RC has conducted an in-depth assessment of the situation and emergency needs in affected areas.

Activities planned:

- Rapid orientation/training of 60 volunteers in assessment methodology
- Conduct rapid emergency needs and capacity assessments.

Relief distributions/ Emergency shelter

Outcome: The immediate sheltering needs of 2,253 displaced persons are met, during three months.

Outputs (expected results)

- Emergency shelter and basic household items provided to 450 displaced families

Activities planned:

- Deployment of one (1) RDRT) staff with shelter and relief expertise for two months to provide training of volunteers and support the implementation of the operation.
- Rapid orientation/training of 60 volunteers in relief distribution
- Develop beneficiary targeting strategy and registration system to deliver intended assistance.
- Purchase 900 tarpaulins, shelter construction materials (woods, bricks, basic tools, ropes etc), 900 blankets, 900 mosquito nets, 900 mats, 450 jerry cans, 450 plastic buckets. 450 kitchen sets will be procured and sent from Dakar.
- Distribute shelter and household items. Distribution per family include two (2) tarpaulins, two (2) blankets, two (2) mosquito nets, one (1) kitchen set, two (2) mats, one (1) jerry can, one (1) plastic bucket.
- Assist target population in the construction process of emergency shelter
- Monitor and evaluate the relief activities and provide reports on relief distributions.
- Develop an exit strategy.

Emergency health

Outcome: The adverse effects of the disaster on health of affected population are reduced

Outputs (expected results)

- First aid services have been provided to injured persons affected by the disaster.
- Referral services for the injured persons to health facilities for treatment

Activities planned:

- Red Cross volunteers continue to provide First Aid and referral services to injured persons to appropriate health facilities.
- Procurement of 10 first aid kits to be provided to the SL RC teams active in the affected communities.
- Monitor and reporting of activities

NS Preparedness

Outcome: SL RC better prepared to respond to fire disasters and have contributed to reduce the risks of fire outbreaks in high risk communities in the five affected districts, during high risk season.

Outputs (expected results)

- The SL RC preparedness and capacity to respond to and mitigate the effects of emergencies related to fires has increased.
- High risk communities in the five affected districts have increased knowledge and are better prepared to mitigate and prevent risks of fires.

Activities planned:

- Train / retrain 60 volunteers in SL RC branches on fire response, mitigation and prevention
- Initiate social mobilization activities through the development of IEC materials and fire mitigation and prevention messages in five SL RC branches.
- Monitor and report on the situation

Logistics

Outcome: Timely and effective logistics support provided to the emergency operations

Outputs (expected results)

To provide effective logistical support that enables rapid assistance provided to targeted beneficiaries.

Activities planned:

- Transport relief supplies to final distribution points.
 - Identify suitable warehouses for storage of relief items.
 - Maintain mobilisation table.
 - Local procurement of shelter items, NFIs, first aid kits (as specified under relief distribution/emergency shelter and emergency health outcomes), in line with national procurement guidelines.
 - Procure kitchen sets from Dakar in line with IFRC procurement guidelines and transport to Sierra Leone for distribution by the national society.
-

Contact information

For further information specifically related to this operation please contact:

- **In Sierra Leone:** Emmanuel Hindovei Tommy, Secretary General, +233 76626674; email: etommy@sierraleoneredcross.org
- **IFRC Operation Manager in Sierra Leone:** Hler GUDJONSSON, Ops Manager, SL Operation, phone: +232 79583187 email: hler.gudjonsson@ifrc.org
- **IFRC Regional Representation:** Daniel Sayi, Regional Representative, West Coast, Abidjan, Côte d'Ivoire office phone; +22566775261 email: daniel.sayi@ifrc.org
- **IFRC Zone:** Daniel Bolaños, Disaster Management Coordinator, Africa; phone: +254 (0)731 067 489; email: daniel.bolanos@ifrc.org
- **IFRC Geneva:** Christine South, Operations Quality Assurance Senior Officer; phone: +41.22.730.4529; email: christine.south@ifrc.org
- **IFRC Regional Logistics Unit (RLU):** Ari Mantyvaara Logistics Coordinator, Dubai; phone +971 50 4584872, Fax +971.4.883.22.12, email: ari.mantyvaara@ifrc.org

For Resource Mobilization and Pledges:

- **IFRC West and Central Africa hub:** Elisabeth Seck, Resource Mobilization Officer, Dakar; phone:+221 33 869 36 60; mobile: +221 77 450 59 49; email: elisabeth.seck@ifrc.org

For Performance and Accountability (planning, monitoring, evaluation and reporting):

- **IFRC Zone:** Robert Ondrusek, PMER/QA Delegate, Africa phone: +254 731 067277; email:robert.ondrusek@ifrc.org

How we work

All IFRC assistance seeks to adhere to the Code of Conduct for the International Red Cross and Red Crescent Movement and Non-Governmental Organizations (NGO's) in Disaster Relief and the Humanitarian Charter and Minimum Standards in Disaster Response (Sphere) in delivering assistance to the most vulnerable.

The IFRC's vision is to inspire, encourage, facilitate and promote at all times all forms of humanitarian activities by National Societies, with a view to preventing and alleviating human suffering, and thereby contributing to the maintenance and promotion of human dignity and peace in the world.

www.ifrc.org
Saving lives, changing minds.



The IFRC's work is guided by Strategy 2020 which puts forward three strategic aims:

1. Save lives, protect livelihoods, and strengthen recovery from disaster and crises.
 2. Enable healthy and safe living.
 3. Promote social inclusion and a culture of non-violence and peace.
-

DREF OPERATION

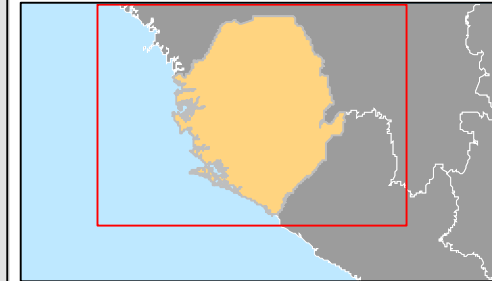
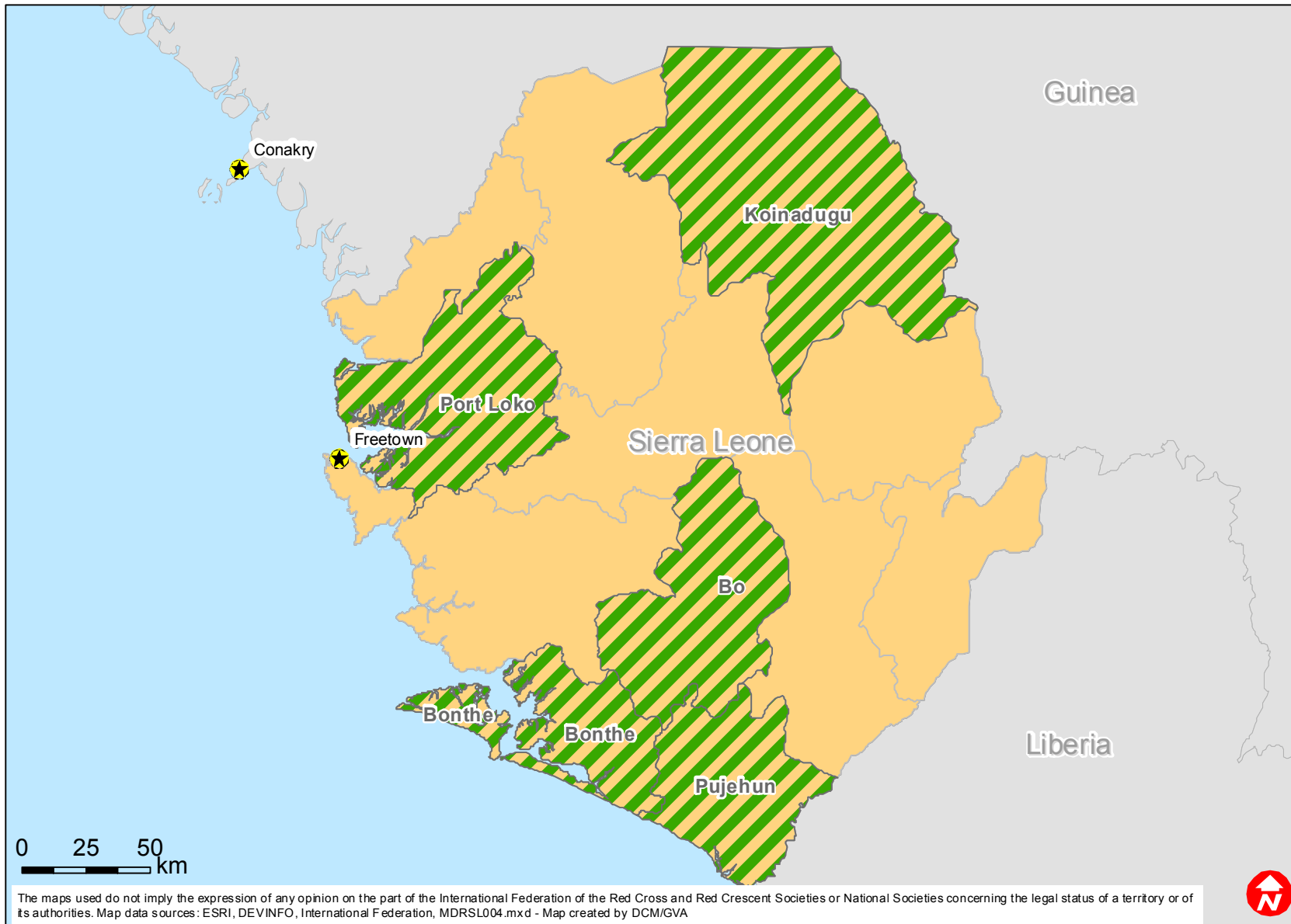
16-01-13


Sierra Leone Fire - MDRSL004

Budget Group	DREF Grant Budget CHF
Shelter - Relief	31,500
Shelter - Transitional	0
Construction - Housing	0
Construction - Facilities	0
Construction - Materials	13,500
Clothing & Textiles	19,800
Food	0
Seeds & Plants	0
Water, Sanitation & Hygiene	0
Medical & First Aid	4,000
Teaching Materials	0
Utensils & Tools	29,250
Other Supplies & Services	0
Emergency Response Units	0
Cash Disbursements	0
Total RELIEF ITEMS, CONSTRUCTION AND SUPPLIES	98,050
Land & Buildings	0
Vehicles Purchase	0
Computer & Telecom Equipment	0
Office/Household Furniture & Equipment	0
Medical Equipment	0
Other Machinery & Equipment	0
Total LAND, VEHICLES AND EQUIPMENT	0
Storage, Warehousing	300
Distribution & Monitoring	2,700
Transport & Vehicle Costs	3,600
Logistics Services	0
Total LOGISTICS, TRANSPORT AND STORAGE	6,600
International Staff	10,000
National Staff	0
National Society Staff	8,000
Volunteers	14,600
Total PERSONNEL	32,600
Consultants	0
Professional Fees	0
Total CONSULTANTS & PROFESSIONAL FEES	0
Workshops & Training	8,500
Total WORKSHOP & TRAINING	8,500
Travel	5,000
Information & Public Relations	3,880
Office Costs	1,000
Communications	900
Financial Charges	1,000
Other General Expenses	0
Shared Support Services	0
Total GENERAL EXPENDITURES	11,780
Programme and Supplementary Services Recovery	10,239
Total INDIRECT COSTS	10,239
TOTAL BUDGET	167,769



Sierra Leone: Fire



 Affected districts

