

www.ifrc.org
Saving lives,
changing minds.

Emergency Plan of Action (EPoA) Guinea: Measles Outbreak

 International Federation
of Red Cross and Red Crescent Societies

DREF Operation	Operation n° MDRGN006; Glide n° EP-2013-000161-GIN
Date of issue: 1 February 2014	Date of disaster: January 2014
Operation manager (responsible for this EPoA): Aissa Fall	Point of contact (name and title): Facély Diawara, Head of Health and Community Care department
Operation start date: 31 Jan. 2014	Expected timeframe: Three months
Overall operation budget: 120,982 CHF	
Number of people affected: 1,600,000	Number of people to be assisted: 1,600,000
Red Cross Red Crescent Movement partners actively involved in the operation (if available and relevant):	
Other partner organizations actively involved in the operation: Ministry of Health, UNICEF and Médecins Sans Frontières	

A. Situation analysis

Description of the disaster

Periodic measles outbreaks occur in Guinea with the last outbreak in 2009 which had 4,755 cases with the region of Conakry being most affected. In 2013, there were 215 cases with 54 being confirmed as positive. In cases collected in December 2013 and early January 2014, the outbreak crossed the epidemic threshold in several regions with 143 suspected cases with 38 confirmed positive.

Due to the evolving situation of measles, a multi-agency mission composed of authorities (Division de la Prévention et de la Lutte contre la Maladie, Direction de la Santé de la Ville de Conakry, Direction Communale de la Santé Matoto and UNICEF undertook a visit to the Matoto districts of the Conakry region. The mission's objective was to assess the extent of cases registered by health facilities. Upon confirmation of the cases and due to the low availability of measles vaccine in Guinea, the following recommendations were made by the National Committee of Emergency Management:

- Accelerate the purchase of vaccines initiated by the department of health;
- Strengthen immunization in districts most affected ;
- Develop a response plan for affected districts;
- Work through the health humanitarian agencies to support the implementation of the response plan;
- Strengthen surveillance in other districts.

Summary of the current response

Overview of Host National Society

The Guinea Red Cross has been attending meetings of the epidemic management committee and mobilizing the affected areas volunteers for the forthcoming vaccination campaign.

National Society health manager is attending partnership meetings with Ministry of Health, UNICEF and MSF and discussing information sharing mechanisms. Guinea Red Cross has volunteers present in all affected communities and have begun to undertake referrals to health centres. Some of the volunteers in the communities are trained in communication and social mobilization activities and were involved in the last polio vaccination campaign with UNICEF.

Overview of non-RCRC actors in country

Médecins Sans Frontières and UNICEF are supporting the Ministry of Health over the next coming weeks with the vaccination campaign and are bringing in the necessary vaccines.

MSF is focusing the vaccination campaign in Conakry region, in the districts of Matoto, Ratoma and Matam. The campaign will last 15 days and will reach 470,000 children. UNICEF is focusing their vaccination campaign in the Conakry region with a focus on districts Kaloum, Dixinn, Coyah, Dubreka, Boke, Tougue, Yomou, Mamou, Kissidougou, Kerouane, Kindia and Dalaba. They will target 1,130,000 children.

The Guinea Red Cross is planning to work with both MSF, WHO and UNICEF to undertake social mobilisation activities through this DREF operation.

Needs analysis, beneficiary selection, risk assessment and scenario planning

In order to respond to the persons affected and further risk of measles to other districts there is a need to reach the population in the affected district with the vaccination campaign, information on measles (origin, symptoms and transmission) and how vaccination will protect the children from the virus

Selection of people to be reached:

In order to cut the transmission chain of the measles outbreak, this operation aim to support the vaccination campaign in 15 districts to ensure that all the children between 9 months to 14 years in the affected districts irrespective of their vaccination status will receive measles vaccination.

Risk Assessment

The anticipated risks which might impact on the implementation of the operation is the inability to undertake the social mobilization activities. This could occur if the volunteer training is not conducted in time and community awareness materials are not produced. Guinea Red Cross is aiming to mitigate this risk through pre-planning of the training, identification of volunteers and preparing all materials to be produced ahead of launching the DREF operation.

B. Operational strategy and plan

Overall objective

Support the mass vaccination campaign in 15 districts through social mobilization activities in coordination with Ministry of Health, UNICEF, WHO and MSF while improving community monitoring and reporting of measles cases.

Proposed strategy

The proposed strategy of the Guinea Red Cross is to focus on social mobilization activities in partnership with UNICEF and MSF in their vaccination campaigns. Through this, the DREF supported operation of the Guinea Red Cross will aim to contribute to the reduction of morbidity and mortality related to measles. The operational strategy will focus on training of volunteers in the affected communities on measles disease recognition and prevention techniques and social mobilization methods. Following the training, alongside the vaccination campaigns, the volunteers will undertake door to door visits and implement community awareness activities.

Operational support services

Human resources

Guinea Red Cross is planning on using 55 volunteers per district or a total of 825 volunteers across the 15 targeted districts on social mobilization activities. In addition, 50 volunteers (10 per district) will be used to undertake measles surveillance and referral activities in the five districts which have shown an increase in measles cases but will not be covered by the current vaccination campaign. The volunteers will be supported by supervisors; a National Disaster Response Team and the Guinea Red Cross headquarter staff. The GRCS health manager will provide technical support and the GRCS finance manager will support the financial project management of the operation. All the volunteers taking part in social mobilization activities will receive the measles vaccine and will be covered by insurance.

The IFRC will support the Guinea Red Cross by deploying one health Regional Disaster Response Team member with experience in social mobilization activities and vaccines. The Regional Disaster Response Team member will be deployed for two months to support the activities and monitoring activities.

Logistics and supply chain

Guinea Red Cross will utilise two vehicles from its fleet for this operation and the logistics support will be provided by the headquarters.

Information technologies (IT)

Guinea Red Cross has radio network coverage in all affected districts which will allow for uninterrupted communication access if telephone lines are not functioning.

Communications

Visibility of the work of the Guinea Red Cross volunteers will be ensured during the operation through local media and visibility material. Guinea Red Cross management team will periodically inform the authorities and public regarding progress of the operation. IFRC will aim to provide regular updates on the operation.

Security

Security risks have been taken into consideration by making use of mobile phone and radio stations.

Planning, monitoring, evaluation, & reporting (PMER)

Guinea Red Cross, in close cooperation with the IFRC regional office will monitor the progress of the operation and provide necessary technical expertise. The monitoring and reporting of the operation will be undertaken by the Guinea Red Cross with support from the Regional Disaster Response Team member. Brief weekly updates will be provided to the IFRC on general progress of the operation, and regular monitoring reports will provide detailed indicator tracking.

Where possible, IFRC will aim to publish operations updates.

Administration and Finance

Guinea Red Cross has a permanent administration and finance which ensures the proper use of financial resources in accordance with conditions laid down in the memorandum of understanding between the National Society and the donor. Financial resource management will be according to Guinea Red Cross regulations and DREF guidelines. In addition, the Guinea Red Cross's own procedures will be applied to the justification of expenses process and will be done on IFRC formats.

The DREF will not be supporting permanent structural costs, only the additional expenses incurred during the three months.

C. DETAILED OPERATIONAL PLAN

Health & care

Needs analysis:

Due to the outbreak of measles, the current needs are vaccination campaigns to immunize children and sensitize vulnerable populations on measles prevention techniques. As UNICEF, WHO and MSF are supporting the Ministry of Health with the vaccination campaigns, there is a gap in community awareness activities related to the vaccination campaign and measles prevention.

Population to be assisted:

The vaccination campaign will target the districts of Kaloum, Dixinn, Coyah, Dubreka, Boke, Tougue, Yomou, Mamou, Kissidougou, Kerouane, Kindia and Dalaba (campaign carried out by UNICEF) and Matoto, Matam and Ratoma (campaign carried out by MSF).

A total of 1,600,000 children will be vaccinated over the duration of the campaign. The Guinea Red Cross will aim to support the targeted population with social mobilization and community awareness activities. In addition, in the five districts that has shown an increase in measles cases but are not being targeted by the vaccination campaign, the Guinea Red Cross will undertake education messaging activities and referring persons to health facilities.

Outcome 1: The immediate risks to the health of affected populations are reduced													
Output 1.1: Improved health of children (9 months to 14 years) in vaccine campaign in communities through social mobilization activities during measles vaccination campaign													
Activities planned	Week / Month	1	2	3	4	5	6	7	8	9	10	11	12
Identify families with children and undertake home visits prior to start of vaccination campaign to disseminate information on the importance of immunization and upcoming campaign													
Support mass vaccination campaign through 330 volunteers through social mobilization in coordination with Ministry of Health, UNICEF, WHO and MSF													
Train 825 volunteers (55 per district) on measles disease recognition and prevention techniques and social mobilization methods													
Develop awareness messages for vaccination campaign and social mobilization activities													
Following vaccination campaign, undertake community visits to encourage non-vaccinated children to visit health centres													

Outcome 2: Improved community monitoring and reporting of measles cases in five other districts that have reported an increase in measles cases													
Output 2.1: Strengthened measles surveillance with referrals to health centres													
Activities planned	Week / Month	1	2	3	4	5	6	7	8	9	10	11	12
Train 50 volunteers on measles community monitoring and reporting													
Identify households with un-vaccinated children through home visits													
Practice active surveillance and begin identifying measles cases and directing patients to health centres													
Establish an accurate map of the area to isolate the monitoring work of volunteers													
Share information with health officials													

Budget

See attached budget

Contact information

For further information specifically related to this operation, please contact:

- **Guinea Red Cross Society:** Facély Diawara, Head of Health and Community Care department; phone: 224 642 265 08; Email: faceli76@yahoo.fr
- **IFRC Regional Representation:** Momodou Lamin Fye, Regional Representative for Sahel; Dakar; phone: +221 33 869 36 41; email: momodoulamin.fye@ifrc.org
- **IFRC DMU:** Daniel Bolaños, Disaster Management Coordinator for Africa; Nairobi; phone: +254 731 067 489; email: daniel.bolanos@ifrc.org
- **IFRC Geneva:** Christine South, Operations Quality Assurance Senior Officer; phone: +41 22 730 45 29; email: christine.south@ifrc.org
- **IFRC Zonal Logistics Unit (ZLU): Rishi Ramrakha,** Nairobi; phone +254 20 283 5142, Fax +254 20 271 2777, email: rishi.ramrakha@ifrc.org

For Resource Mobilization and Pledges:

- **In IFRC Zone:** Martine Zoethouthmaar, Resource Mobilization Coordinator; Addis Ababa; phone: + 251 93-003 6073; email: martine.zoethoutmaar@ifrc.org

For Performance and Accountability (planning, monitoring, evaluation and reporting):

- **IFRC Zone:** Robert Ondrusek, PMER Coordinator; phone: +254 731 067277; email: robert.ondrusek@ifrc.org

How we work

All IFRC assistance seeks to adhere to the Code of Conduct for the International Red Cross and Red Crescent Movement and Non-Governmental Organizations (NGOs) in Disaster Relief and the Humanitarian Charter and Minimum Standards in Disaster Response (Sphere) in delivering assistance to the most vulnerable.

The IFRC's vision is to inspire, encourage, facilitate and promote at all times all forms of humanitarian activities by National Societies, with a view to preventing and alleviating human suffering, and thereby contributing to the maintenance and promotion of human dignity and peace in the world.

www.ifrc.org

Saving lives, changing minds.



The IFRC's work is guided by Strategy 2020 which puts forward three strategic aims:

1. Save lives, protect livelihoods, and strengthen recovery from disaster and crises.
2. Enable healthy and safe living.
3. Promote social inclusion and a culture of non-violence and peace.

DREF Budget

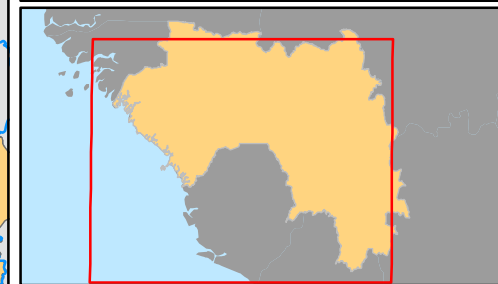
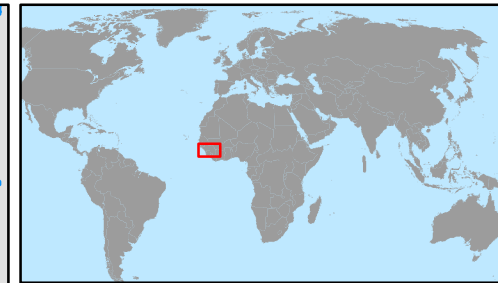
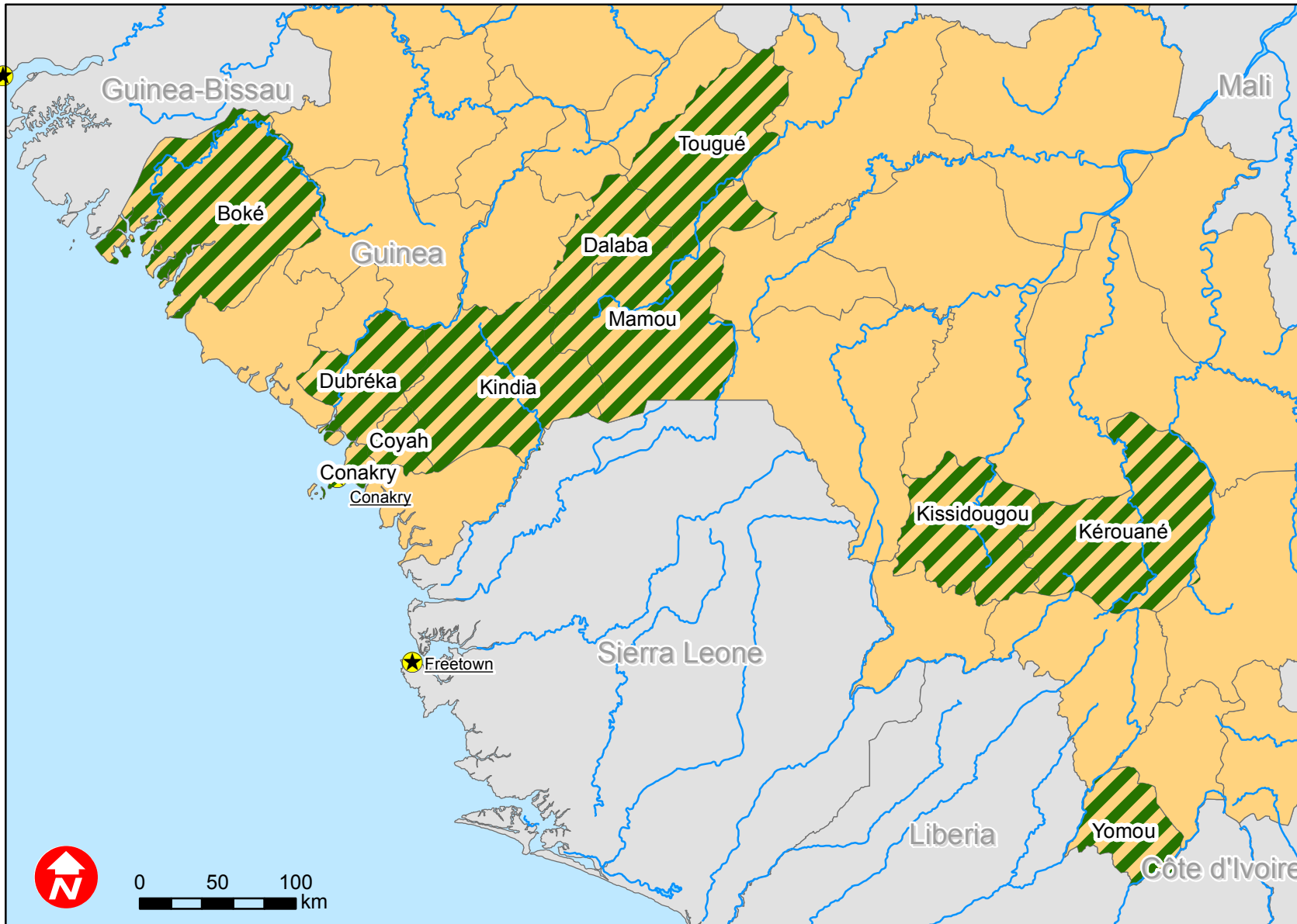
01/02/2014

Guinea: Measles Outbreak (MDRGN006)

Budget Group	Multilateral Response	Inter-Agency Shelter Coord.	Bilateral Response	DREF Budget CHF
Shelter - Relief	0			0
Shelter - Transitional	0			0
Construction - Housing	0			0
Construction - Facilities	0			0
Construction - Materials	0			0
Clothing & Textiles	0			0
Food	0			0
Seeds & Plants	0			0
Water, Sanitation & Hygiene	0			0
Medical & First Aid	0			0
Teaching Materials	10,823			10,823
Utensils & Tools	0			0
Other Supplies & Services	0			0
Emergency Response Units	0			0
Cash Disbursements	0			0
Total RELIEF ITEMS, CONSTRUCTION AND SUPPLIES	10,823	0	0	10,823
Land & Buildings	0			0
Vehicles Purchase	0			0
Computer & Telecom Equipment	0			0
Office/Household Furniture & Equipment	0			0
Medical Equipment	0			0
Other Machinery & Equipment	0			0
Total LAND, VEHICLES AND EQUIPMENT	0	0	0	0
Storage, Warehousing	0			0
Distribution & Monitoring	0			0
Transport & Vehicle Costs	3,044			3,044
Logistics Services	0			0
Total LOGISTICS, TRANSPORT AND STORAGE	3,044	0	0	3,044
International Staff	12,020			12,020
National Staff	0			0
National Society Staff	6,076			6,076
Volunteers	38,559			38,559
Total PERSONNEL	56,655	0	0	56,655
Consultants	0			0
Professional Fees	0			0
Total CONSULTANTS & PROFESSIONAL FEES	0	0	0	0
Workshops & Training	33,021			33,021
Total WORKSHOP & TRAINING	33,021	0	0	33,021
Travel	5,970			5,970
Information & Public Relations	660			660
Office Costs	264			264
Communications	1,510			1,510
Financial Charges	1,651			1,651
Other General Expenses	0			0
Shared Support Services				
Total GENERAL EXPENDITURES	10,056	0	0	10,056
Programme and Supplementary Services Recovery	7,384	0	0	7,384
Total INDIRECT COSTS	7,384	0	0	7,384
TOTAL BUDGET	120,982	0	0	120,982



Guinea: Measles



 Affected Areas