



KENYA: FLOODS

No. MDRKE003
(Glide no. FL-2006-000159-KEN)
7 November 2006

The Federation's mission is to improve the lives of vulnerable people by mobilizing the power of humanity. It is the world's largest humanitarian organization and its millions of volunteers are active in over 185 countries

In Brief

This DREF Bulletin is being issued based on the situation described below reflecting the information available at this time. CHF 150,000 (USD 120,100 or EUR 94,340) has been allocated from the Federation's Disaster Relief Emergency Fund (DREF) to respond to the needs of this operation. This operation is expected to be implemented over 3 months and will be completed by January 2007. Unmarked funds to repay DREF are encouraged.

This operation is aligned with the International Federation's Global Agenda, which sets out four broad goals to meet the Federation's mission to "improve the lives of vulnerable people by mobilizing the power of humanity".

Global Agenda Goals:

- Reduce the numbers of deaths, injuries and impact from disasters.
- Reduce the number of deaths, illnesses and impact from diseases and public health emergencies.
- Increase local community, civil society and Red Cross Red Crescent capacity to address the most urgent situations of vulnerability.
- Reduce intolerance, discrimination and social exclusion and promote respect for diversity and human dignity.

Background and current situation

This year, the short rains season in Kenya commenced in mid-October with heavy rains that resulted in flooding. Latest reports indicate that there has been loss of lives and damage to property due to flooding in several areas within the Coast Province and parts of North Eastern Province. The most affected districts are Mombasa, Kwale, Kilifi, Isiolo, Turkana and Moyale.

According to the Kenya Red Cross Society (KRCS), the floods resulted in deaths of at least 17 people and displacement of more than 700 others in both the coastal and north eastern regions:

- Five children were killed in Mombasa when a landslide triggered by the downpour buried them alive;
- Four charcoal burners drowned while attempting to cross a bridge in Kilifi District;
- Four people died in Isiolo District and two in Turkana District;
- In Mombasa District, a total of 60 families were displaced. There are 20 houses at risk of being swept by landslides and more than 50 others at risk of flooding in Mishomoroni locality;
- In Chagamwe (Mombasa), five houses collapsed leaving five families homeless;
- In Kilifi, seasonal rivers have burst their banks causing flooding in the area. In the lower part of the area, main roads and bridges to and from Kaloleni have been cut off;
- The main bridge linking Mazaras to Kaloleni has been washed away and most people who work within Mombasa town but live on the mainland have been left stranded. The residents of Kaloleni have been forced to use a longer route, about 120 km, to Mombasa through Kilifi town. Usually, the direct distance through the bridge is 50 km;
- In Kaloleni Division, the ongoing flooding has affected school programmes at a period when national examinations are ongoing. Examination papers have to be airlifted by government agencies.

Kenya: Floods; DREF Bulletin no. MDRKE003

During a media interview, KRCS officials explained that when excessive rains come along the coast, houses are washed away because of their weak foundations and poor construction. In the north, the soil is dry at this time because of drought and cannot absorb the rainwater easily. This results in flooding and difficulties in accessibility as most dirt roads are rendered impassable. In some localities such as Kaloleni in Kilifi District, the cause of flooding is associated with lack of exit space for trapped water and there is need for drainage facility.

Table 1: Impact of the floods on the Coastal and North Eastern provinces

Affected districts	Families displaced	Property damaged	Other related threats and vulnerabilities	Lives lost
Mombasa	65	Houses, roads and highways.	Landslides and water-borne diseases.	5
Kilifi	100	15 houses, main roads and bridges.	Crocodile attacks, lack of pipe water supply, water-borne diseases and lack of accessibility.	5
Kwale	75	Houses and crops.	Poor harvests due to maize crop destruction, crocodile attacks and water-borne diseases.	1
Isiolo	355	Houses, crops and roads.	Poor accessibility and water-borne diseases.	4
Turkana	105	-	Lack of food and water-borne diseases.	2
Total	700			17

Red Cross and Red Crescent action

In order to enable the Kenya Red Cross Society (KRCS) to effectively respond to immediate needs of the disaster, the Federation allocated CHF 150,000 from DREF on 30 October 2006 to the national society. Through the funds, the national society will undertake the provision of shelter and non-food items (NFIs) to the affected communities and reconstruction process.

According to the KRCS assessment teams, over 700 households have been affected or rendered homeless while properties including crops, livestock and household equipment have been swept away. The most urgent needs include mattresses, drugs and insecticide-treated mosquito nets (ITNs). The KRCS is presently working on a plan of action for this floods operation; it will be provided in the first DREF Bulletin update.

However, immediate intervention efforts are on-going. A total of 250 water jerry cans, 500 ITNs, 600 bars of soap, 250 kitchen sets, 250 tarpaulins and 1,000,000 aqua tablets have been retrieved from the KRCS Nairobi office and dispatched to the affected families to support the on-going relief interventions by the Mombasa KRCS branch. In addition, blankets and second-hand clothes have also been distributed. Priority is being given to those families who lost everything during the floods. The KRCS is also leading in the efforts to bring aid to thousands of severely affected people living in temporary camps in Isiolo and Turkana, to provide short-term support and help them rebuild their homes.

The KRCS local branch has deployed its Participatory Hygiene and Sanitation Transformation (PHAST) team to sensitize the community on the hygiene and clean water usage. The KRCS plans to conduct health and sanitation awareness campaigns and will support water provision and purification to the affected households over the next three months.

Coordination

The national society together with the provincial administration conducted a rapid assessment to ascertain the extent of the damages and the immediate needs. The KRCS and the government have provided the victims of the north eastern region floods with food, blankets and tents. According to reports by the Integrated Regional Information Networks (IRIN), the Isiolo County Council and the Catholic Diocese have also donated some cash.

For further information specifically related to this operation please contact:

- ***In Kenya:*** Abbas Gullet, Secretary General, Kenya Red Cross Society, Nairobi; Email: gullet.abbas@kenyaredcross.org; Phone +254.20.60.86.61; Fax +254.20.60.35.89
- ***In Kenya:*** Getachew Ta'a, Acting Federation Head of East Africa Regional Delegation, Nairobi; Email: getachew.taa@ifrc.org; Phone +254.20.283.52.55; Fax +254.20.271.27.77 or Charles Byamugisha, Regional Disaster Management Coordinator, Email: charlesgodfrey.byamugisha@ifrc.org; Phone +254.20.283.51.17; Fax + 254.20.271.27.77
- ***In Geneva:*** Amna Al Ahmar, Federation Regional Officer for East Africa, Africa Dept.; Email: amna.alahmar@ifrc.org; Phone +41.22.730.44.27; Fax +41.22.733.03.95

All International Federation assistance seeks to adhere to the [Code of Conduct](#) for the International Red Cross and Red Crescent Movement and Non-Governmental Organizations (NGOs) in Disaster Relief and is committed to [Humanitarian Charter and Minimum Standards in Disaster Response \(Sphere\)](#) in delivering assistance to the most vulnerable.

For longer-term programmes in this or other countries or regions, please refer to the Federation's Annual Appeal. For support to or for further information concerning Federation programmes or operations in this or other countries, or for national society profiles, please also access the Federation's website at <http://www.ifrc.org>

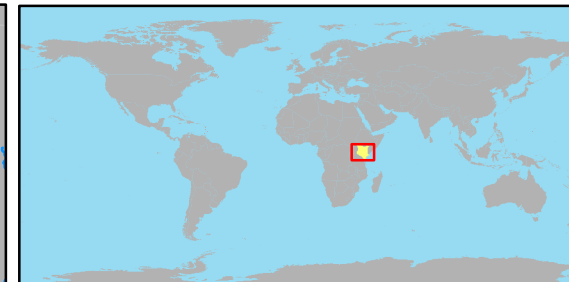
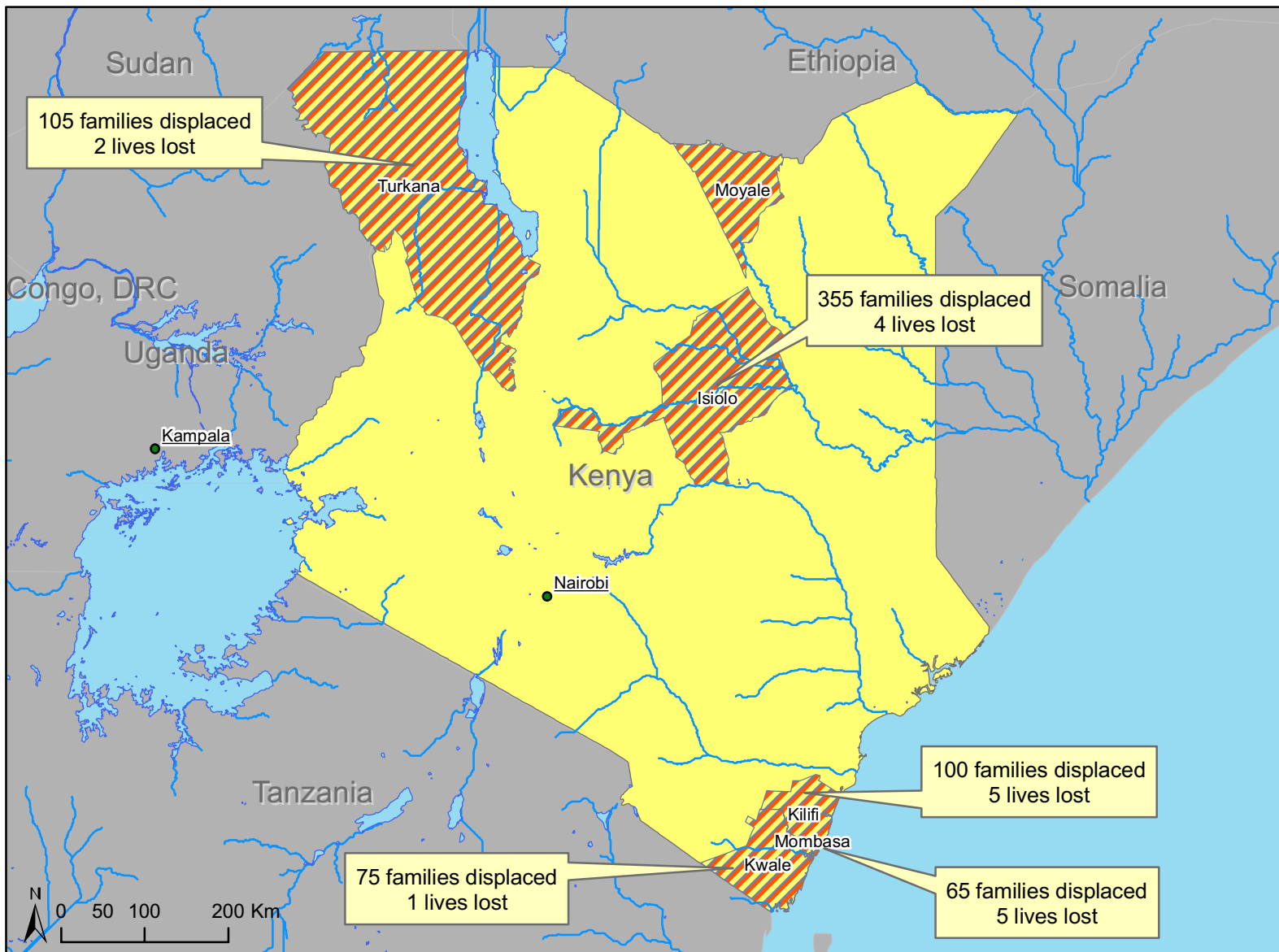
[Kenyan map below; Click here to return to the title page](#)



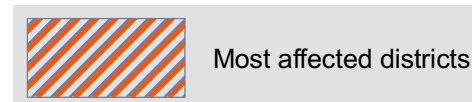
International Federation of Red Cross and Red Crescent Societies
Fédération internationale des Sociétés de la Croix-Rouge et du Croissant-Rouge
Federación Internacional de Sociedades de la Cruz Roja y de la Media Luna Roja
الاتحاد الدولي لجمعيات الصليب الأحمر والهلال الأحمر

DREF MDRKE003
Issued 7 November 2006
FL-2006-000159-KEN

Kenya: Floods



This year, the short rains season in Kenya commenced in mid-October with heavy rains that resulted in flooding. Latest reports indicate that there has been loss of lives and damage to property due to flooding in several areas within the Coast Province and parts of North Eastern Province. The most affected districts are Mombasa, Kwale, Kilifi, Isiolo, Turkana and Moyale.



The maps used do not imply the expression of any opinion on the part of the International Federation of Red Cross and Red Crescent Societies or National Societies concerning the legal status of a territory or of its authorities.

Map data sources: ESRI, Federation, GIST, SALB