

# EMERGENCY APPEAL



International Federation of Red Cross and Red Crescent Societies  
Fédération Internationale des Sociétés de la Croix-Rouge et du Croissant-Rouge  
Federación Internacional de Sociedades de la Cruz Roja y de la Media Luna Roja  
الاتحاد الدولي لجمعيات الصليب الأحمر والهلال الأحمر

## KENYA: FLOODS

Preliminary Appeal no. MDRKE003

(Glide no. FL-2006-000159-KEN)

17 November 2006

*The International Federation's vision is to strive, through voluntary action, for a world of empowered communities, better able to address human suffering and crises with hope, respect for dignity and a concern for equity. Its mission is to improve the lives of vulnerable people by mobilizing the power of humanity. It is the world's largest humanitarian organization and its millions of volunteers are active in over 185 countries.*

### In Brief

**THIS PRELIMINARY EMERGENCY APPEAL SEEKS CHF 9,848,235 (USD 7,864,934 OR EUR 6,157,653) IN CASH, KIND, OR SERVICES TO ASSIST 300,000 BENEFICIARIES FOR 6 MONTHS.**

[<Click here to link directly to the attached budget and here to view the map of the affected area>](#)

CHF 150,000 (USD 120,000 or EUR 94,000) was allocated from the Federation's Disaster Relief Emergency Fund (DREF) to support the Kenya Red Cross Society (KRCS) to carry out the relief response operation. Unearmarked funds to replenish the DREF are encouraged. Please note that the KRCS is one of the national societies on the direct transfer system.

The projects and activities elaborated here are aligned with the International Federation's Global Agenda, which sets out four broad goals to meet the Federation's mission to "improve the lives of vulnerable people by mobilizing the power of humanity".

#### Global Agenda Goals:

- Reduce the numbers of deaths, injuries and impact from disasters.
- Reduce the number of deaths, illnesses and impact from diseases and public health emergencies.
- Increase local community, civil society and Red Cross Red Crescent capacity to address the most urgent situations of vulnerability.
- Reduce intolerance, discrimination and social exclusion and promote respect for diversity and human dignity.

### The situation

After a brief lull in the October-December 2006 short rains season, heavy downpours are now being experienced in parts of the country in November. Earlier in October, heavy flooding led to the loss of 19 lives, approximately 30,000 people affected and about 8,000 people displaced in Isiolo, Garissa, Turkana, Lodwar, Moyale, Wajir, Mandera and Kisumu in the Coastal, Western and Northern Eastern Provinces of Kenya. In October 2006, the onset of the rains was timely over most parts of the country where various places started to experience rainfall between the second and third week of the month. According to the Kenya Meteorological Department (KMD), the heavy rainfall was quite evident at Mombasa and Moyale on 15 and 17 October, as rainfall recorded 110.5mm and 124.6mm respectively, within a few hours. Further, according to the KMD, rainfall amounts received in October 2006 alone in the North Eastern Province and the Coastal strip were so high that they exceeded the Long Term Means for the entire October-December rain season.

## **Kenya: Floods; Preliminary Emergency Appeal no. MDRKE003**

The situation is further aggravated given that the rains were accompanied by unusual and severe flooding, which the communities have not adapted to. The majority of the districts currently affected by the floods are only just beginning to recover from the effects of the prolonged drought that ravaged most parts of Kenya in late 2005 and weakened the coping mechanisms of the affected people. The latest update on the drought emergency appeal is available at: <http://www.ifrc.org/docs/appeals/06/MDRKE00104.pdf>.

The rains have now resumed in November with renewed intensity with 23 people having lost their lives and approximately 300,000 affected in different parts of the countrywide. The rains have caused severe destruction to infrastructure, with bridges washed away and roads linking towns cut off making transportation impossible for commuters and traders. The rains have also left many commuters stranded for days without food. Students sitting for national examinations have also been affected. Crops in farmlands have also been destroyed amid fears of renewed food insecurity among the affected districts as a result of crop destruction. The timely onset of the 2006 short-rains over some agricultural areas of the country was beneficial to farmers who planted in the right time. According to the KMD, pasture for livestock was expected to thrive in the pastoral areas of North Eastern Province. If the rains pour consistently into December, it will reduce drought and food insecurity in parts of the country, as well as positively increase the water levels in dams, wells, shallow pans, boreholes and the general water table in drought-stricken areas. The level of water for hydroelectric power generation was also expected to improve due to the good rains in the catchments areas, noted the KMD. The forecast indicates that most parts of the country are likely to experience enhanced rainfall into December 2006.

Responding to a request from the Kenya Red Cross Society (KRCS), the International Federation is launching this Preliminary Emergency Appeal in order to support the national society in their relief action. This appeal is largely based on the KRCS Preliminary Appeal launched on 16 November 2006. It is available on their website at: <http://www.kenyaredcross.org/UserFiles/File/Kenya%20Floods-Preliminary%20Appeal%20No.1.15.11.06.pdf>

While this Preliminary Emergency Appeal responds to the immediate needs in Kenya, the flooding is considered regional in nature. The situation is reportedly equally serious in Somalia, Ethiopia, Sudan, Tanzania, and other countries. In Sudan and Ethiopia, the Federation will support the national societies to adjust the emergency flood operations currently being implemented (please refer to the website for these two operations). In Tanzania, Somalia, and other countries potentially affected, the Federation will provide support and assistance to monitor the situation, and may launch separate emergency appeals depending on the needs.

### **Detailed description of the current situation:**

#### **Coast Province**

**Kwale District:** About 50,000 people have been affected. Flooding submerged homes and 2,000 hectares of farmland since one week of heavy rainfall in Shimba Hills. 1,000 people have been marooned by floods in Vanga location, which is cut off, inaccessible and all electric poles down. Most pit latrines in Vanga have collapsed and most water sources contaminated leading to fears of water borne diseases. 200 people have been affected in Lunga Lunga, 1,300 people in Mwangwei, while an unconfirmed number of people have also been affected in Murima, Majoreni, Mbwiti, Mwabila- Samburu and Gasi-Msambweni areas. All these areas are completely inaccessible. Mrima Bridge has been washed away at Mvumoni. Schooling has also been affected in Vanga, Samburu and Kinango. Transportation between Kwale town, Kinango and Tiribe was cut off after Marere River burst its banks and washed away the bridge. Hundreds of passengers have been stranded by the river banks without food. This has also affected trade between various areas as food and other commodities cannot be delivered to markets.

**Kilifi District:** 288 people have been displaced and 25 homes destroyed. Areas affected are Township and Mnaraloleni areas.

**Mombasa District:** The Ministry of Health issued a cholera outbreak alert. According to media reports, six people perished due to cholera following the floods. Residents have blamed the deaths due to poor drainage systems. Some drinking water pipes have also been washed away in Mombasa.

## Kenya: Floods; Preliminary Emergency Appeal no. MDRKE003

### North Eastern Province

**Garissa District:** 17,000 people have been displaced. Two people, including a school girl, died after she drowned in a seasonal river. Three children are reported missing in Saretho and Bakuyu. Pastoralists were also stranded with their animals due to floods. 120 houses are reported submerged in Bakuyu and Ziwani settlements. The residents were forced to move to higher grounds after the river burst its banks and submerged their dwellings and also destroyed crops amid fears of a food crisis. Rains have made most roads impassable in Kotulo, Hulugho, Liboi and Ijara. Poor drainage has been reported in most parts of Garissa town leading to flooding into houses. 7,000 people displaced in some villages (*bullas*) made up of Makuti thatched houses and mud walls or traditional “heriyo” Somali tukuls. These *bullas* are adjacent to the river and face dual floods risk of upland flash floods and flooding from the river. These *bullas* have repeatedly been affected since El Niño phenomena in 2002 and 2003.

**Dadaab:** Two people lost their lives in Ifo Refugee Camp and approximately 160,000 more affected by heavy flooding at Dadaab Refugee Camp, according to UNHCR. The UN agency also noted that latrines in the refugee camps had either collapsed or were full of flood water, posing a serious health risk. The Garissa – Dadaab road has also been adversely hit by floods. The most affected areas include Kumahumato location, where the Ewaso Nyiro plains have been flooded turning to flat water stream. The floods have paralyzed the EMOP Operation and the areas are completely inaccessible in Modogashe, Shanta, Abak, Jarajila, Sankuri and Benane divisions.

**Wajir District:** Areas affected were Buna, Korondile, Malkagufu and Ingirir. Lagbogol Bridge has been destroyed and many roads have been cut off.

**Isiolo District:** Heavy rains have not led to any incidences, but may flood Isiolo town if it continues to pound.

**Moyale District:** 3,000 people are feared displaced in Bori area. Manyatta area is also affected. Many toilets in Moyale have also been submerged leading to a fear of water borne diseases. There is a reported outbreak of malaria.

**Mandera District:** 2,000 people were displaced in Elwak due to floods.

**Ijara District** is completely cut off from nearby towns as a result of serious flooding. The area District Commissioner has noted that he does not have information concerning the number of people affected in Ijara because communication has been cut off and inaccessible.

### Western Province

**Busia District:** Budalangi area is flooded mildly due to re-channelling of River Yala, thereby affecting 2,000 people at Osieko. Further, 6 people from the same family were reported killed in Osieko after they were attacked by a hippo after it left the waters following the flooding. If the rains progress, there is a likelihood of River Nzoia overflowing, further affecting Budalangi.

**Migori District:** Incessant rainfall in the next two weeks is expected to overflow River Kuja and Migori.

### Summary of people affected by floods countrywide

Area	Number of people affected
Dadaab	(UN figure) 160,000
Kwale	50,000
Garissa	17,000
Kilifi	10,000
Tana River	10,000
Ijara	10,000
Wajir	3,000
Moyale	3,000
Elwak	2,000
Budalangi	2,000
Total	267,000
Additional projection of those in need	33,000
<b>Grand total</b>	<b>300,000</b>

## Kenya: Floods; Preliminary Emergency Appeal no. MDRKE003

### Summary of pre-positioned non-food relief items (NFIs)

- Kwale: Non-food items for 8,000 people.
- Kisumu: Non-food items for 6,000 people.
- Garissa: Non-food items for 6,000 people.

NB: NFI include blankets, kitchen sets, jerry cans, tarpaulins and bars of soap.

### Summary of pre-positioned basic food items

- Garissa: 200 bags (22kgs) of rice.
- 500 packs (10kg) of baked beans.
- 1.8 MT (100ctns) of water.
- 73 cartons (12 litres) of Vegetable oil.
- Kwale: 50 MT of Unimix (UNICEF donation).

## The immediate needs and Red Cross and Red Crescent action

There is concern that the destruction of crops will likely lead to food insecurity among the affected population, provoking related health risks including malnutrition and increased susceptibility to disease. The damage to water and sanitation systems could increase the risk of both vector and waterborne diseases such as cholera, typhoid, diarrhoea, etc. Emergency food and non-food items are also urgently required for the displaced families. Villages/communities have been cut off due to the destruction of bridges and roads leading to limited or a total lack of access to basic social services. There is also growing concern that the flooding will have an impact on the pastoralist communities' livelihood, as well as farmers.

CHF 150,000 was allocated from the Federation's Disaster Relief Emergency Fund (DREF) on 7 November 2006 to provide immediate support the KRCS in its relief response operation. National society personnel have conducted floods assessments in most parts of the country. Further assessment missions are ongoing countrywide as the situation deteriorates. Due to the inaccessibility of areas as a result of washed away bridges, roads or muddy stretches the national society's relief personnel have had difficulty accessing flooded areas for assessment or to deliver relief assistance. Despite the challenges encountered, a KRCS Preliminary Appeal was issued nationally for KES 562,072,500 (CHF 9.8 million) to assist 300,000 beneficiaries for 3 months. The Appeal is based on the needs described below reflecting the information available at this time. The Transport Service Unit team of the National Society in Dadaab carried out evacuation of people affected by the floods. The National Society also dispatched relief food and non-food items to affected areas. The table below shows relief items distributed so far to the floods affected areas:

### Non-food items

District	Blankets	Kitchen sets	Jerry cans	Tarpaulins (MT)	Soap	Bladder tanks
Kwale	1,000	500	1,000	500	2,000	0
Kilifi	2,500	250	250	250	1,000	3
Lodwar	0	200	400	0	800	0
Isiolo	1,325	1,000	2,000	780	4,000	0
Moyale	0	82	0	82	0	0
<b>Total</b>	<b>4,825</b>	<b>1,950</b>	<b>3,650</b>	<b>1,530</b>	<b>7,800</b>	<b>3</b>

Earlier in October 2006, the KRCS distributed the following relief assistance:

- In Isiolo District, non-food items for 6,000 people;
- In Turkana District, tarpaulins, jerry cans, blankets and second-hand clothes, as well as food were also dispatched to assist a further 1,800 people;
- In Kisumu, blankets and mosquito nets were distributed to the affected families.

## Kenya: Floods; Preliminary Emergency Appeal no. MDRKE003

### Food-Items

District	UNIMIX (MT)	Vegetable Oil (MT)	Sugar (MT)	Wheat Flour (MT)	M/Flour (MT)	Pulses (MT)	Cereals (MT)	Dates (MT)	BP-5 (cartons)
Moyale	2.050	0.370	1.000	1.000	0	0	0	0	0
Wajir	16	0	0	0	0	0	0	0	0
Isiolo	17	0	0	0	0	0	0	0	0
Turkana	1.500	0	0	0	158	0	0	0	0
Kwale	4	2	0	0	0	2	0	208	72
<b>Total</b>		<b>2.370</b>	<b>1.000</b>	<b>1.000</b>	<b>158</b>	<b>2</b>	<b>2</b>	<b>208</b>	<b>72</b>

As part of its initial response and recovery strategy, the KRCS will provide and distribute non-food items to the affected vulnerable groups and support health services in order to respond appropriately to epidemic risks related to floods, to prevent further deterioration of their social and health situation. The KRCS will also ensure that potable water is provided through water trucking, and undertake water treatment, rebuild latrines and conduct sensitization campaigns at the community level. The KRCS recovery strategy will include the provision of post disaster assistance (distribution of seeds) to help families re-start a new production cycle.

### Coordination

The KRCS branches in the affected districts have conducted assessments together with the local authorities under the District Steering Group. The Kenya Navy and Kenya Wildlife Service (KWS) have assisted in transporting students to schools to do their examinations. KWS helicopters have been released to assist in distribution of relief items. The National Society's Secretary General has been in touch with the concerned ministries in Government and the local administration in the flooded areas to facilitate easy assistance to the people who have been affected. Food dispatches to inaccessible and marooned areas are now ongoing with the involvement of the military helicopters and other logistical support.

The KRCS is a member of the Kenya Food Security Meeting, the main organ for coordination of food security matters. The national society is also the lead agency in emergency operations in Kwale District. In fulfilling its mandate of alleviating human suffering, the national society works closely with the Government, WFP and other humanitarian organizations in all food security matters. The Inter Agency Steering Committee is involved in providing support to the operational response, and the regional food security delegate from the Federation's regional delegation in Nairobi has been requested to participate in and support assessments pending the arrival of a UN Disaster Assessment & Coordination (UNDAC) team that is being deployed. The KRCS is working closely with both to align and coordinate efforts. The Red Cross's Transport Support Unit (TSU) Memorandum of Understanding (MoU) will be extended to enable them to provide support in the floods situation.

At the district level, the branches are members of the District Steering Group (DSG) and are involved in carrying rapid assessments. The Society co-chairs the Rapid-Onset Disaster Committee with the Office of the President. The Committee is a body that also comprises international NGOs, UN agencies and government ministries. The Rapid-Onset Disaster Committee meeting was held on 14 November 2006 at the KRCS headquarters to plan the way forward for the current flood situation. The government representative present noted that the government will act more decisively to mitigate the effects of the floods by proposing the setting up of a command operation centre at the Moi International Airport in Mombasa to coordinate the floods operations. Currently, the government ministries have strategized on how to proceed with the repair of bridges and roads in Kwale and other cut off areas. The government and WFP have food stocks that will be mobilized to assist people in the affected areas, while the Kenya Red Cross may seek local donor support to meet the needs of the displaced and affected people. The members of the Committee will meet again to plan a rapid assessment mission of the floods situation and determine the exact nature of assistance required. The Committee will meet again within a week at the Kenya Red Cross Society Headquarters.

The KRCS has built up its preparedness and response capacity from challenges and experiences of past disaster operations. All mitigation programmes are designed with sufficient consultation at community level, using and enhancing community structures where possible, and ensuring an equal representation of men and women at decision-making bodies.

## **The proposed operation**

### **Objectives and activities planned**

**Objective 1: Provision of logistical support to food donations from Government of Kenya and other donors for 2 months for a total population of 300,000 persons.**

**Activity planned to meet this objective:** Undertake both primary and secondary transportation of food.

**Objective 2: Provision of non-food items to 50,000 households.**

**Activities planned to meet this objective:** Purchase and distribute non-food items including: 100,000 blankets, 50,000 pieces of tarpaulins, 100,000 pieces of laundry/washing soap, 200,000 pieces jerry cans, 100,000 pieces mosquito nets and 50,000 kitchen sets.

**Objective 3: Provision of families with seeds (maize, sorghum, cow peas, garden peas, green grams) and farm implements, and provision of 600 MT of various assorted categories of seeds (all certified) and fertilizers.**

**Activity planned to meet this objective:** Purchase and distribute assorted certified seeds, fertilizers and farm implements.

**Objective 4: Help the target communities regain sustained access to water and sanitation systems.**

**Activities planned to meet this objective:**

- Provide water purification and disinfection and sachets;
- Construct emergency latrines;
- Train communities on PHAST.
- Conduct hygiene promotion activities;
- Provide water storage facilities.

**Objective 5: Significantly reduce mortality and morbidity in vulnerable populations affected by floods.**

**Activities planned to meet this objective:**

- Provide WHO medical kits to health facilities to target diarrhoeal outbreaks;
- Support community health education and promotion activities, as well as medical outreaches, by facilitating community advocacy in collaboration with MoH;
- Conduct malaria prevention by facilitating provision of mosquito nets.

**Objective 6: Offer logistical support in terms of primary and secondary transportation of food and non-food relief, as well as stock relief items in warehouses in the field for easy access by beneficiaries at all times.**

**Activities planned to meet this objective:**

- Provide primary and secondary transportation of 5,000 MT of food non-food items;
- Conduct distribution through volunteer support.

**Objective 7: Facilitation of assessment, monitoring and evaluation of floods operation.**

**Activities planned to meet this objective:**

- Undertake a multi-sectoral assessments by members of the Sudden Onset disaster team;
- Undertake monitoring and evaluation of floods operation.

### **National society capacity**

The operation will reinforce the capacities of personnel in the affected branches. Skills in relief distributions and the awareness of the need for coordinated disaster preparedness will be improved. In addition the National Society plans to organize training for volunteers and other key personnel. Where capacity gaps exist, the National Society may seek technical assistance from International Federation of Red Cross and Red Crescent Societies.

## Kenya: Floods; Preliminary Emergency Appeal no. MDRKE003

### Monitoring and evaluation

The National Society Headquarters works closely with Branches countrywide in the affected areas to ensure proper delivery of humanitarian assistance to the flood victims. The National Society together with members of the sudden onset disaster committee will assume the overall monitoring role to ensure accountability, timely and quality response.

### Communications – Advocacy and Public information

Maintaining a steady flow of timely and accurate information between the field and other major stakeholders is vital for fundraising, advocacy and maintaining the profile of emergency operations. During an operation, communications between affected populations and the Red Cross and Red Crescent, as well as with the media and donors, is an essential mechanism for effective disaster response and the cornerstone to promote greater quality, accountability, and transparency. The communications activities outlined in this appeal are aimed at supporting the National Society to improve their communications capacities and develop appropriate communications tools and products to support effective operations. These activities are closely coordinated with the Communications department of the International Federation's Secretariat in Geneva.

### Budget summary

See Annex 1 for details.

Susan Johnson  
Director  
National Society and Field Support Division

Markku Niskala  
Secretary General

#### ***For further information specifically related to this operation please contact:***

- ***In Kenya:*** Abbas Gullet, Secretary General, Kenya Red Cross Society, Nairobi; Email: [gullet.abbas@kenyaredcross.org](mailto:gullet.abbas@kenyaredcross.org); Phone +254.20.60.35.93; +254.20.60.86.81/13; Fax +254.20.60.35.89
- ***In Kenya:*** Esther Okwanga, Federation Head of East Africa Sub-Regional Office, Nairobi; Email: [esther.okwanga@ifrc.org](mailto:esther.okwanga@ifrc.org); Phone + 254 20.283.50.00; Fax +254 20.271.27.77
- ***In Kenya:*** Per Jensnaes, Federation Head of East Africa Regional Delegation, Nairobi; Email: [per.jensnaes@ifrc.org](mailto:per.jensnaes@ifrc.org); Phone +254.20.283.51.24; Fax +254.20.271.84.15 or Charles G. Byamugisha, Disaster Management Coordinator, East Africa Regional Delegation, Nairobi; Email: [charlesgodfrey.byamugisha@ifrc.org](mailto:charlesgodfrey.byamugisha@ifrc.org); Phone +254.20.283.51.17; Fax +254.20.271.27.77
- ***In Geneva:*** Amna Al Ahmar, Federation Regional Officer for East Africa, Africa Dept.; Email: [amna.alahmar@ifrc.org](mailto:amna.alahmar@ifrc.org); Phone +41.22.730.44.27; Fax +41.22.733.03.95.

All International Federation assistance seeks to adhere to the [Code of Conduct for the International Red Cross and Red Crescent Movement and Non-Governmental Organizations \(NGO's\) in Disaster Relief](#) and is committed to the [Humanitarian Charter and Minimum Standards in Disaster Response \(Sphere\)](#) in delivering assistance to the most vulnerable.

For longer-term programmes in this or other countries or regions, please refer to the Federation's Annual Appeal. For support to or for further information concerning Federation programmes or operations in this or other countries, or for national society profiles, please also access the Federation's website at <http://www.ifrc.org>

[Preliminary budget and map below; click here to return to the title page.](#)

## BUDGET SUMMARY

Name: Kenya Floods

TYPE	VALUE
<b>RELIEF NEEDS</b>	<b>IN CHF</b>
Shelter & constructions	708,750
Clothing & textiles	1,063,125
Food & Seeds	1,968,750
Water & sanitation	1,050,000
Medical & first aid	459,375
Teaching Materials	0
Utensils & tools	1,089,703
Other Relief Supplies	70,875
<b>TOTAL RELIEF NEEDS</b>	<b>6,410,578</b>
<b>CAPITAL EQUIPMENT</b>	
Vehicles	
Computers & telecom. equipment	
<b>PROGRAMME SUPPORT</b>	
Programme support (6.5% of total)	11,967
<b>TRANSPORT STORAGE &amp; VEHICLE COSTS</b>	
Distribution & storage	118,125
Transport & vehicle costs	1,640,625
<b>PERSONNEL</b>	
Expatriate staff	
National staff	
Workshops & training	615,234
<b>ADMINISTRATIVE &amp; GENERAL SERVICES</b>	
Travel & related expenses	157,500
Information expenses	
Administrative & general expenses	894,206
<b>TOTAL OPERATIONAL NEEDS</b>	<b>3,437,657</b>
<b>TOTAL APPEAL CASH, KIND, SERVICES</b>	<b>9,848,235</b>
<b>LESS AVAILABLE RESOURCES (-)</b>	<b>0</b>
<b>NET REQUEST</b>	<b>9,848,235</b>

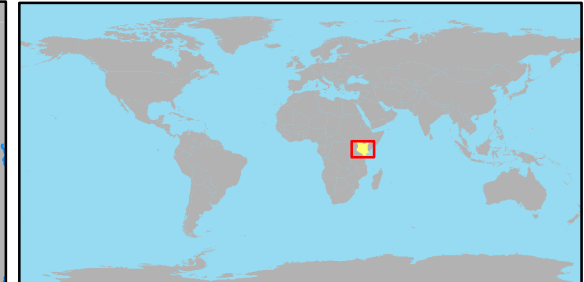
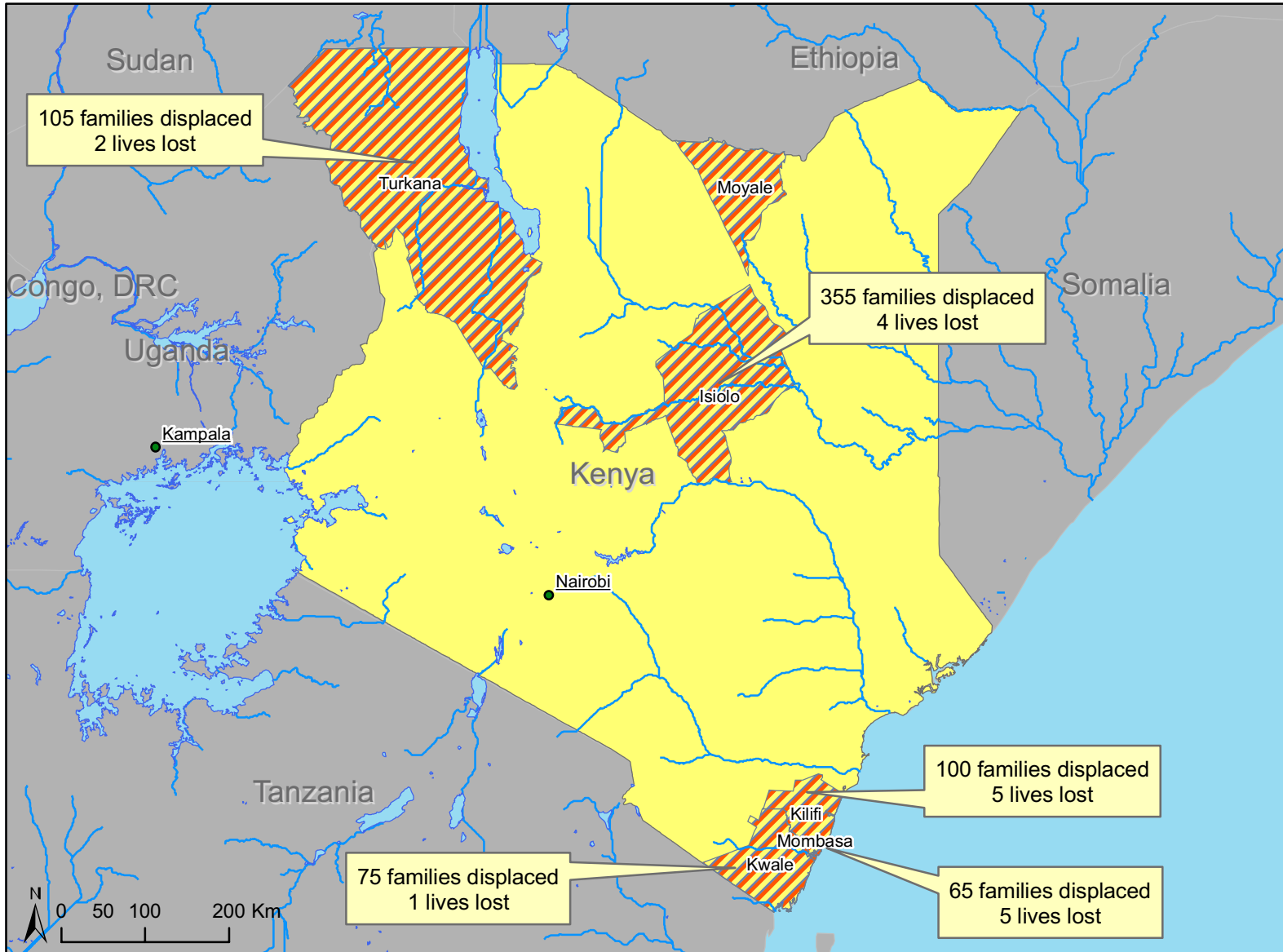
Base for calculation of operations support	10,520,074
Total appeal	9,836,269



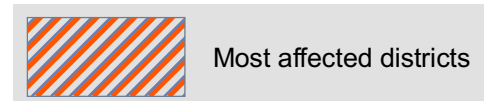
International Federation of Red Cross and Red Crescent Societies  
Fédération internationale des Sociétés de la Croix-Rouge et du Croissant-Rouge  
Federación Internacional de Sociedades de la Cruz Roja y de la Media Luna Roja  
الاتحاد الدولي لجمعيات الصليب الأحمر والهلال الأحمر

DREF MDRKE003  
Issued 7 November 2006  
FL-2006-000159-KEN

# Kenya: Floods



This year, the short rains season in Kenya commenced in mid-October with heavy rains that resulted in flooding. Latest reports indicate that there has been loss of lives and damage to property due to flooding in several areas within the Coast Province and parts of North Eastern Province. The most affected districts are Mombasa, Kwale, Kilifi, Isiolo, Turkana and Moyale.



The maps used do not imply the expression of any opinion on the part of the International Federation of Red Cross and Red Crescent Societies or National Societies concerning the legal status of a territory or of its authorities.

Map data sources: ESRI, Federation, GIST, SALB