



## ZAMBIA: CHOLERA

DREF Bulletin no.  
MDRZM003  
(GLIDE no. EP-2006-000173-ZMB)  
29 November 2006

*The Federation's vision is to strive, through voluntary action, for a world of empowered communities, better able to address human suffering and crises with hope, respect for dignity and a concern for equity. Its mission is to improve the lives of vulnerable people by mobilizing the power of humanity. It is the world's largest humanitarian organization and its millions of volunteers are active in over 185 countries.*

### In Brief

This DREF Bulletin is being issued based on the situation described below reflecting the information available at this time. To respond to the needs or to replenish disaster preparedness stocks distributed to the affected population, CHF 57,213 (USD 47,441 or EUR 36,015) was allocated from the Federation's Disaster Relief Emergency Fund (DREF). Unearmarked funds to repay DREF are encouraged.

This operation is expected to be implemented over 3 months, and will be completed by February, 2007; a Final Report will be made available three months after the end of the operation (by May 2007). [<click here to link to the map of the affected area>](#)

The projects and activities described below are aligned with the Federation's Global Agenda, which sets out four broad goals to meet the Federation's mission to "improve the lives of vulnerable people by mobilizing the power of humanity". These are:

- Reduce the numbers of deaths, injuries and impact from disasters.
- Reduce the number of deaths, illnesses and impact from diseases and public health emergencies.
- Increase local community, civil society and Red Cross Red Crescent capacity to address the most urgent situations of vulnerability.
- Reduce intolerance, discrimination and social exclusion and promote respect for diversity and human dignity.

*For further information specifically related to this operation please contact:*

- *In Zambia: Charles Mushitu, Secretary General, Zambia Red Cross Society, Lusaka; Email: [zrcs@zamnet.zm](mailto:zrcs@zamnet.zm); Phone +260.1.25.36.61; Fax +260.1.25.22.19*
- *In Zambia: Yawo Gameli Gavlo, Acting Head of Zambia Delegation, Lusaka; Email: [yawogameli.gavlo@ifrc.org](mailto:yawogameli.gavlo@ifrc.org); Phone +260.1.25.13.65; +260.1.25.40.74; Fax +260.1.25.22.99*
- *In Harare: Farid Aiyar, Southern Africa Regional Disaster Management Coordinator, Harare; Email: [farid.aiyar@ifrc.org](mailto:farid.aiyar@ifrc.org); Phone +263.4.70.61.55, +263.4.72.03.15; Fax +263.4.70.87.84*
- *In Harare: Françoise Le Goff, Head of Southern Africa Regional Delegation, Harare; Email: [francoise.legoff@ifrc.org](mailto:francoise.legoff@ifrc.org); Phone +263.4.70.61.55, +263.4.72.03.15; Fax +263.4.70.87.84.*

All International Federation assistance seeks to adhere to the [Code of Conduct for the International Red Cross and Red Crescent Movement and Non-Governmental Organizations \(NGO's\) in Disaster Relief](#) and is committed to the [Humanitarian Charter and Minimum Standards in Disaster Response \(Sphere\)](#) in delivering assistance to the most vulnerable. For longer-term programmes in this or other countries or regions, please refer to the Federation's Annual Appeal. For support to or for further information concerning Federation programmes or operations in this or other countries, or for national society profiles, please also access the Federation's website at <http://www.ifrc.org>

## Background and current situation

Zambia experiences cholera outbreaks every year with the onset of the rains. On 15 October 2006, a first case was officially confirmed in Kapiri Mposhi district of the Central Province of Zambia. The reported confirmed cases rose to 9. No deaths were reported. The outbreak was localized to Lukanga Swamps (particularly an area called Chililachembe Fishing camp). The population estimate of the surrounding settlements is 14,000. For the most recent outbreak, first cases were reported on the 30 October 2006, which came from Lupiya village located 25km from Chieng District (Luapula Province) and only 1km from the Democratic Republic of Congo boarder (Mpweto area). With an increase in rainfall, cholera cases increased to 115 and 5 deaths as at 20<sup>th</sup> November 2006. A number of the cases attended to at the treatment centers were from across the boarder in Congo DR. This prompted ZRCS to dispatch an assessment team on 22<sup>nd</sup> November 2006.

Highlights from the assessment report are as follows: Chieng is one of the 72 districts in Zambia, it borders the northern part of Democratic Republic of Congo (Mpweto area), and is 1,115 km north of Lusaka. It has a total population of 101,178 people. The main occupation of the residents is small scale fishing and small scale farming. However, for the past five years the district has never had cholera out break. The last time the district was hit by cholera was in 2001. The total population of the affected areas in Chiengi is 25,000 people which indicate 4,500 households. However, this request also includes foreseen intervention in other parts of Zambia, particularly the capital Lusaka which is prone to cholera outbreaks during the rainy season.

## Red Cross and Red Crescent action

Before the onset of the rains the ZRCS embarked on mobilising and training of volunteers as preparedness effort. So far, 45 volunteers have been trained in cholera prevention, 20 in Lusaka and 25 in Mpulungu. In addition a stock of 14000 x 500mls of chlorine was procured for distribution to communities in these areas. Over 18,000 volunteers who can be mobilised country wide for any response are available. So far over 3,000 households have been reached by the volunteers in Mpulungu and Lusaka and over 2,000 litres of chlorine distributed to the households.

The ZRCS has drafted a Cholera Contingency plan as its preparedness effort. The necessary funds to support the effort are needed urgently. An assessment team was sent to Chiengi district to assess the recent outbreak and the findings are outlined below. There are 56 branch volunteers in Chiengi district who have been assisting in the following ways:

- Sensitizations through a PA system, door to door campaigns, community meetings organized in collaboration with the community leaders.
- Hygiene education.
- Distribution of chlorine tablets or powder.

## The needs

Immediate needs:

- Community hygiene education / sensitization.
- Distribution of domestic chlorine.
- Disinfectants.
- Protective clothing.
- Medical supplies.
- Transport for sensitization – Water supply in the affected areas.

Longer-term needs:

- Provision of safe domestic water e.g. drilling boreholes.
- Sustained community hygiene promotion and sensitization.

The following interventions require further support from the ZRCS and other actors:

- Scaling-up of sensitization on cholera prevention and control in Lusaka, Chiengi and other high risk areas.

## **Zambia: Cholera; DREF Bulletin no. 1**

- Helping to render water safe by distribution of chlorine and jerry cans.
- Logistical supplies to the district for cholera mitigation.
- Training of more volunteers in cholera mitigation and prevention.

Proposed longer-term interventions:

- Drilling boreholes.
- Sensitization
- Monitoring of cholera intervention activities.

### **Coordination**

The ZRCS has been coordinating with the Government through the Ministry of Health by way of obtaining official information on the cholera situation, and the ZRCS has indicated its intervention plans. Furthermore, ZRCS involved the Ministry of Health, among other stakeholders in the preparation of its Cholera contingency plan.

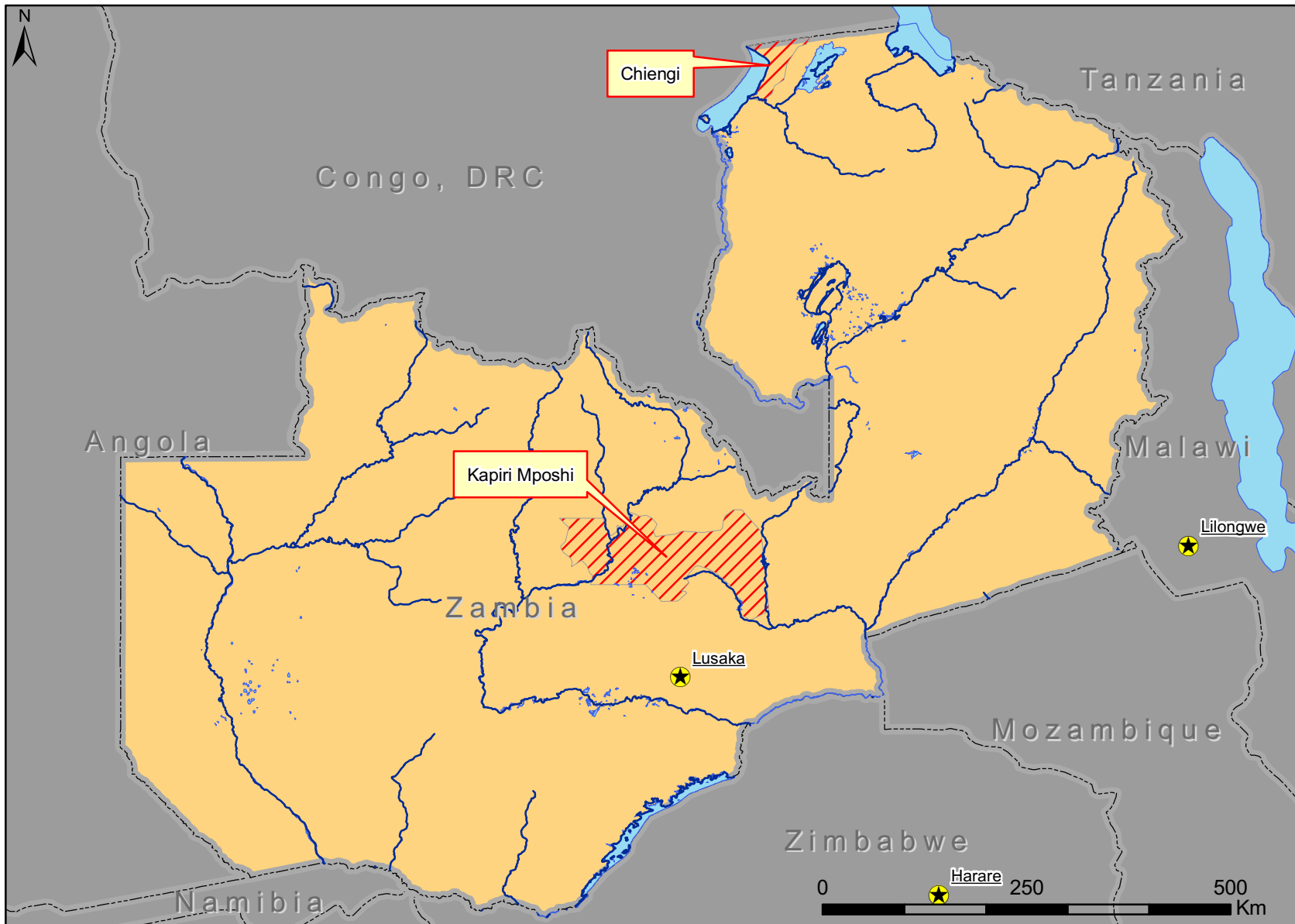
Action by other humanitarian actors:

- Medicine San Frontier (MSF) has been assisting with medical supplies.
- Branch Executive Committee has been offering voluntary services such as sensitization through door to door hygiene campaigns and community gatherings hygiene Education which are organized in collaboration with the community leaders.
- Health Communication Partners initially assisted in transport and community sensitization through drama, which was done in three days.

**[Map below; click here to return to the title page or contact information](#)**



## Zambia: Cholera outbreak



- ★ Capitals
- ▨ Affected districts