

Operations update



International Federation
of Red Cross and Red Crescent Societies

Bangladesh: Cyclone Sidr

Emergency appeal n° MDRBD003
GLIDE TC-2007-000208-BGD
Operations update n° 3
29 November 2007

Period covered by this Operations Update:
21 to 27 November 2007

This Emergency Appeal seeks CHF 24,483,160 (USD 22.2 million or EUR 15 million) in cash, kind, or services to support the Bangladesh Red Crescent Society to assist 243,000 families (1,215,000 beneficiaries) over two years from the date. This appeal was launched on 25 November 2007. [<click here for the Emergency Appeal>](#)

A Preliminary Appeal was launched for CHF 3,989,305 on 16 November to mobilize immediate relief assistance.

CHF 250,000 was allocated from the Federation's Disaster Relief Emergency Fund (DREF) to support this operation. Unearmarked funds to replenish DREF are encouraged.

This operation is expected to be implemented over a two-year period, and will therefore be completed by November 2009. A Final Report will be made available three months after the end of the operation.

Summary: In addition to the considerable loss of life, thousands of people are still displaced as their homes have been swept away by Cyclone Sidr. As of 27 November, updated information¹ indicates the death toll in the Cyclone Sidr disaster has risen to 3,243, with some 34,708 injured and 880 people still reported missing. The disaster affected an estimated total of 7.05 million people from 1.65 million families, and completely destroyed 365,772 houses across 30 districts in the southwest of Bangladesh. As many as 523,723 livestock have been killed, and 1,846,655 acres of crops has been wiped out. Extensive damage to infrastructure, including educational institutes, roads and bridges, as well as electricity and telecommunication transmission lines/facilities have been either destroyed or affected. The electricity supply to many of the remote areas where the cyclone storm hit are still out.

The Bangladesh Red Crescent Society (BDRCS) and the Federation are working closely with the government of Bangladesh and various other international and local agencies/organizations to coordinate and undertake relief efforts. The operation is on-going to provide the most urgent immediate needs in the form of medical, food, potable water and shelter relief, including household and hygiene items, to 243,000 of the most affected families who have lost all means of self-support.

Dry food, emergency shelter (tarpaulins), blankets, family kits (containing household and hygiene items) and medical supplies (water taps and oral rehydration salts) were immediately distributed to over 75,000 beneficiaries in nine of the most affected districts. Under the current Appeal framework, attention has now shifted to focus on 20,000 families in the four most-affected districts - Borguna,



With no clothes to keep her daughter warm, Salema tries her best to fix a torn sweater for her child. Picture taken in Sath.

¹ Source: Disaster management information centre (DMIC), Bangladesh ministry of food and disaster management.

Bagerhat, Pirojpur and Patuakhali.

To deliver the relief to the affected communities, the national society has trained and efficient regional disaster response team (RDRT) members and experienced staff and response units working in the field to support the field assessment and coordination team (FACT). In addition to the trained RDRT in the country, members from the South Asia region (one each from Afghanistan and Sri Lanka and two from India) have also been deployed and are due in country from 29 November.

A major concern is the contaminated drinking water source in many parts of the affected areas. The vulnerable are in urgent need of drinking water, and the distribution of water purification tablets (WPT), hygiene kits and jerry cans are under way. Possible solutions are being looked into to ensure access to available and sustainable safe water sources. The BDRCS has already mobilized 18 medical teams covering 12 districts. The most vulnerable are provided with water purification tablets (WPT), oral rehydration salts (ORS) and essential medicines.

The FACT is conducting an overall assessment for the Appeal. They are in the process of finalizing the plan of action in coordination with the country delegation and BDRCS. The team, comprising of four members, has started a detailed assessment in the following districts: Patuakhali, Khulna, Borguna, Pirojpur, Bagerhat and Barisal. The team has also been attending several meetings within the Cluster System, in particular the water and sanitation, shelter, food security, health and recovery cluster meetings on a regular basis. During the reporting period, specific meetings were carried out with partner organizations such as Oxfam, United Nations Children's Fund (UNICEF), the World Food Programme (WFP), the World Health Organization (WHO), Save the Children, United Nations Development Programme (UNDP) and USAID/Office of U.S Foreign Disaster Assistance (OFDA). Plans currently under way to establish a sub-office in the district of Barisal, with logistics and the FACT evaluating the technical aspects for this set.

Since the launch of the Appeal, international response has been positive. However, more aid is urgently needed, particularly unearmarked cash contributions to enable the operation to respond effectively to the needs on the ground. There is a donor contribution list attached which shows contributions for which we have received pledge management notes. However, we would like to take this opportunity to thank all of those who have contributed or pledged to this appeal. Including those pledges which are currently indicated but not confirmed in writing, we would hope to reach 40% coverage.

[<Click here for current donor contributions list>](#)

The situation

The centre for policy dialogue (CPD) has updated the estimated economic loss caused by Cyclone Sidr to have affected *aman* (rice) paddy worth approximately CHF 815,000. The government has informed donors that there is a shortage of food grains due to the extensive damage to crops, and concerns that food could be a problem till March/April 2008. It is hoped that things will take a turn for the better with the start of the *boro* (rice) harvest in May.

The affected people are in dire need of immediate relief in terms of food, potable water, warm clothing and shelter. The situation is further exacerbated by the onset of winter expected in less than a month. Over 300,000 children reside in the six most affected districts, and they are threatened by many cold-related and waterborne diseases like pneumonia, diarrhoea and cholera. Furthermore, a shortage of pure drinking water has given rise to acute waterborne diseases like diarrhea among the wider population. FACT assessments report that many ponds are contaminated with rotten trees, carcasses and dead bodies.



Affected people in dire need of food, water and shelter.



Goods for distribution being prepared from the branch warehouse, in coordination with local authorities and BDRCS cyclone preparedness volunteers.

Along with BDRCS medical mobile teams, a ten-member Bangladesh Army mobile medical team is currently working to treat patients affected by diarrhoea and other diseases. According to media reports, the Army mobile medical teams are providing health services to over 200 patients a day.

A number of fishermen reported missing have been rescued by coast guards from the remote islands where they were stranded. However, many are still missing.

Electricity has not been fully restored in the districts of Barisal, Patuakhali, Borguna, Pirojpur, Bhola, Jhalakati, Madaripur, Shariatpur and Gopalganj. The cyclone has destroyed electric sub stations and electric towers, resulting in the disruption of power supply to an estimated 65 percent of households in the affected areas. Distribution lines are severely damaged, and it is still not known when electricity will be fully restored.

The government of Bangladesh and many international humanitarian organizations, including the United Nations and Red Cross Red Crescent Movement, responded quickly to the disaster. The government has deployed naval ships, aircraft and helicopters to deliver mostly food relief items to the affected people. In addition, two ships from the United States (US) have been deployed for this relief operation. The US army is also providing assistance to the local hospitals and treating patients. However, due to roads being damaged, it is still difficult for people to travel to hospitals or clinics and there is still an urgent need to get immediate assistance to the most affected people.

The information below, compiled by the disaster management information centre of the Bangladesh ministry of food and disaster management, outlines the extent of the devastation caused by Cyclone Sidr:

Affected districts	30
Affected upazilas (Sub-districts)	200
Affected unions	1,811
Affected households (families)	1,655,876
Affected population	7,054,459
Reported deaths	3243
People injured	34,708
People lost (missing)	880
Houses damaged (Fully)	365,772
Houses damaged (Partially)	875,710
Crops damaged (Fully)	471,737 acres
Crops damaged (Partially)	1,374,918 acres
Livestock deaths	523,723
Roads damaged (Fully)	648 km
Roads damaged (Partially)	2121.5 km
Educational institutions (Fully)	1,374
Educational institutions (Partially)	8,635
Embankment damaged	615 km
Damaged trees	3,369,366

Hundreds of thousands of the people are still living in temporary shelters and on higher grounds. The casualties and damages to houses, livestock, crops, educational institutions, roads and embankments have been reported from 1,811 unions of 200 upazilas of 30 districts, mostly attributed to the storm surge.

[<click here for map with details on the most affected areas>](#)

However, it has been acknowledged that many lives were saved due to the early warning system as well as a network of cyclone relief shelters built under a joint programme by the BDRCS, the government and other agencies on cyclone prevention. At present, over 33,000 volunteers in 30 affected districts are still working to help

the most vulnerable. These volunteers are a combination of trained volunteers, branch governance volunteers, special trained volunteers and cyclone preparedness programme (CPP) volunteers in the coastal areas.

A coordination sub-cell organized by the government has been set up in the region of Barisal. This sub-cell will coordinate all relief related activities by local NGOs and international organizations. As of November 26 the Government of Bangladesh has allocated BDT 273 million (CHF 4.44 million) to the affected districts.

Coordination and partnerships

The BDRCS and the Federation, along with various other international agencies and organizations such as the UNDP, UNICEF, WFP, USAID and DFID, are working together to share information and coordinate relief efforts. These organizations are members of the Disaster Emergency Response (DER) Group. Based on the latest information from the field, the DER Emergency Response Matrix is regularly updated and sent to WFP.

On November 22, the head of the Federation's country delegation, along with heads of other organizations participated in the DER meeting chaired by the adviser to the ministry of food and disaster management. The meeting was on a brief overview of the loss and damages due to the cyclonic storm. Additionally, information was exchanged on issues related to the current food stock, donor commitments as well as the short- and long-term needs and priorities of the most vulnerable.

An assessment team from Saudi Red Crescent briefed the Federation country delegation regarding their independent operations. Similarly, the Kuwait Red Crescent has been in contact with the head of the Federation's country delegation for operational and coordination issues. The German Red Cross and the emergency relief coordinator from Swiss Red Cross are also maintaining contact with the delegation on operational issues, further to the Swiss Red Cross's logistic delegate technical support in the field.

The deputy head of zone for the Asia Pacific paid a visit to the relief operation and held meetings with various agencies, including the national society and partner national societies. Discussions were also held with the delegation and the FACT on the progress of the operation.

We encourage all national societies wishing to work internationally in Bangladesh to coordinate and agree their intended support and activities with the BDRCS and with the Federation country team so as to enable a cohesive and well-targeted response. To date there is no formal Movement coordination mechanism in country, but the country team is working closely with those partner Societies present in country and working in specific technical areas.

On 27 November, a meeting took place between the USAID representatives and the delegation where they were briefed about the findings and progress of the relief operation. Various cluster meetings are being attended by the relevant person from the delegation and BDRCS.

Red Cross Red Crescent action

In terms of human resources needs, the recruitment process for delegates for head of operations, disaster management, water and sanitation as well as health has begun. Additionally, some local officers are being recruited for disaster management, health, water and sanitation, the Cluster Shelter group and British Red Cross ERU team, including drivers, for the operation.

For this operation, two members from the South Asia regional delegation have already arrived in country and the other two members will arrive and be operational by the end of this week. A recovery member of the FACT arrived from the Maldives delegation on 21 November and on 22 November, the four member British Red Cross Logistics ERU arrived along with a communications officer. However, the two resource persons from Kuala Lumpur (the acting head of the Zonal Planning Monitoring and Reporting Unit and the Disaster Management Unit delegate) have returned to Kuala Lumpur.



FACT conducted assessments in the affected areas along the coastal districts.

Progress of proposed relief operation

Goal of the operation:

The overall goal of the operation is to restore the lives and basic living conditions of communities affected by the Cyclone Sidr disaster.

RELIEF (1 YEAR)

Food and Non-Food Items

Objective (Food): Objective: Immediate needs on food rations for 100,000 cyclone-affected families in the south coastal lines shall be met by the effort of international and domestic assistance within the first three months, thus supporting them to focus on sustaining their lives.

Expected result: Targeted cyclone affected families have received adequate food rations to cope with the effects of cyclone.

Objective (Non-Food): To cope in a post situation of devastating cyclone of nine districts, distribution of nonfood items shall be made along with food items for 100,000 cyclone- affected families to meet their basic needs within the first three months.

Expected result: Targeted cyclone-affected families have received essential non-food items.

Per family - 2 blankets, clothes (2 sarees, 2 lungis and clothes for children), 1 family kit (contents include cooking saucepans, plastic mug, plastic cups, aluminum plates, spoons, candles and match boxes and plastic weave bag), 1 tarpaulin, 1 ground sheet for shelter and 2 jerry cans for water and sanitation.

BDRCS relief teams are engaged extensively in door-to-door assessment, selection and registration of beneficiaries (in parallel coordination with other partners to avoid duplication of work) for the initial relief distribution under the Appeal framework in four of the most affected districts. The teams will distribute food and non-food commodities to approximately 20,000 families in these districts.

A meeting was held with the BDRCS cyclone operation coordinator and deputy director of the relief department on November 27 to finalize plans for the relief. In addition, the BDRCS national headquarters-issued instructions were disseminated to all branches to take necessary action for this relief operation.

The national headquarters operation team will take master rolls and ration cards from the BDRCS warehouse to hand over to the branches. BDRCS national headquarters has deployed their personnel in all districts immediately after the cyclone.

The content of each family food kit is 10kg rice, 5kg dahl, 2 kg oil, 1 kg salt, and a piece of saree and lungi each. BDRCS branches are working on locating warehouses to store the commodities before positioning them at distribution points. Priority is set for four most-affected districts for immediate distribution.

The 20,000 food parcels diverted from flood operation will be distributed to the following affected districts:

District	No. Of Families	Total families affected	Houses fully damaged
Bagerhat	5,000	120,900	118,000
Barguna	5,000	110,600	94,800
Pirujpur	5,000	31,500	12,900
Pataskala	5,000	86,600	N/A
Total	20,000	349,600	119,500

The procurement process is ongoing for another 25,000 food packages with non-food commodities, which will be distributed at the earliest possible time.

BDRCS branches in the affected areas have received local donations and relief goods from other organizations, in coordination with local authorities, as the organizations felt the need to take the advantage of the vast Red Cross Red Crescent network and their experience in the field. The distributions were made in the first week of the relief distributions, following informal agreements at a local level. This was a massive distribution operation in terms of the large scale of commodities that were distributed within a quick time frame. A total number of

44,890 beneficiaries were covered in the distributions of food commodities. Additionally, dry food was distributed to 31,960 beneficiaries.

BDRCS food distribution as of 22 November 2007

(food items, including 10kg of rice, 1kg of dahl, 1 litre of oil and 1kg of salt per family)

No.	District	No. of families covered
1	Bagerhat	3,399
2	Barisal	137
3	Jhalokathi	500
4	Laxmipur	200
5	Borguna	1,765
6	Gopalganj	1,010
7	Bhola	800
8	Khulna	500
9	Madaripur	667
	Total:	8,978

BDRCS dry food distribution as of 22 November 2007 (3 kgs of flattened rice and 1kg molasses)

No.	District	No. of families covered
1	Bagerhat	2,320
2	Patuakhali	1,150
3	Borguna	1,467
4	Pirajpur	1,455
	Total	6,392

Health

Objective: The health status of 243,000 families (1,215,000 beneficiaries) among cyclone-affected population is improved by providing basic health care (preventive, promotive and curative health care) for two months.

Expected result: Cyclone affected population has improved access to adequate basic health care services to prevent communicable diseases.

Distribution of medical necessities:

A total of 18 mobile medical teams are at present serving in the 12 affected districts of Bangladesh, which are Khulna, Sathkhira, Bagerhat, Faridpur, Madaripur, Gopalganj, Borguna, Patuakhali, Pirajpur and Shariatpur. All these districts are not according to the list of districts which will be covered under this appeal. The teams will be allocated this week according to the districts covered by the appeal.

According to the available reports each team in the field is distributing approximately 300 WPTs and 100 ORS packages per day. The exact figures are not available since the teams are travelling to remote areas of the affected districts where there is a lack of communication facility. Once they return to their units the figures will be available.

Up to 20 medical kits have been procured and distributions will commence on 29 November to the sub-district health complexes under the nine most-affected districts. Each medical kit will accommodate 5,000 people for a month. Furthermore, an additional 73 kits will be procured in the near future, in relation to the funding situation. In addition, a psychosocial support assessment team, with the support of the Danish Red Cross and BDRCS and in coordination with the Federation, has been formed and will be mobilized in the field over the next two days.

Reports collected between 19 to 25 November confirm that a total of 2,777 men, 3,030 women and 1,074 children below five years of age have been treated, with a total of 6,864 patients treated. Each medical team is estimated to be providing services to 170 to 200 patients per day on average. The affected families have received basic health care with essential medicines, helping to reduce waterborne diseases and various infections, while averting complications in existing diseases through timely treatment.

Percentage of treated patients affected with the following diseases:

Types of common diseases	Percentage of patients treated
Acute respiratory infection	13%
Diarrhoea	13%
Dysentery	10%
Minor injuries and some with secondary infections	15%
Other	49%

Water and sanitation

Objective: The risk of water-borne and water-related diseases has been reduced through provision of sustainable water purification means and water containers for 100,000 households for one year.

Expected result 1: Access to sustainable safe water.

Future distribution of water and sanitation items is at a planning stage. Water purification tablets are being distributed with the relief distributions.

Expected result 2: Hygiene practice among the target population have improved.

Future distribution of water and sanitation items is at a planning stage.

Coordination meetings for the Water and sanitation (WASH) Cluster, which are at present taking place in UNICEF offices in Dhaka, will soon be shifted to the district of Barisal.

Four further detailed assessments of needs from the health, shelter and water and sanitation will be carried out in the field on 28 November. The districts which they will be visiting are Barisal, Pirojpur and Borguna. The ERU logistics team and BDRCS relief teams will also be carrying out field assessments, with the Logistics team looking to set up reception, storage and support to distribution of goods. The operations key office will move to Barisal in the coming days.

The approaches which are being used in this water and sanitation operation have been crosschecked with other organizations such as the UNICEF, USAID and Oxfam, and are in line with the teams' findings. These are that there are no major outbreaks of waterborne or related diseases so far reported, and a decentralized approach is currently the most effective.

The main constraint faced by the team is the shortage in human resources to further continue the operation effectively. Another major problem is getting sufficient supplies of WPT, jerry cans and other stocks. Furthermore, access to remote affected areas remains difficult due to uprooted trees on the roads.

Shelter

Objective 1: 5,000 most vulnerable cyclone-affected families who lost their houses in **Barguna, Pirojpur, Bagerhat and Patuakhali** districts are living in a basic shelter within one year of the project.

Expected result: Targeted families receive tools, materials and support to build a basic shelter.

Borguna, Pirojpur, Bagerhat and Patuakhali are the priority districts for the shelter programme. Households led by women and those that have lost their main income earner will be given priority.

A shelter assessment to determine the items and design of the community toolkit will be carried out from 28 November to 1 December 2007. Detailed criteria for toolkit distributions will be drawn up in the coming week with the BDRCS.

In addition, the assessment and relief teams in the field are carrying out semi-structured interviews with beneficiaries who have received relief items from Red Cross Red Crescent distributions. This consultation will help to determine if the relief operations currently being carried out are appropriate for beneficiaries, and at the same time assist in making the necessary changes to the distribution packs.

CAPACITY BUILDING/DISASTER RISK REDUCTION (2 years)

National society capacity building

Objective: To render effective humanitarian services in most affected 09 districts, BDRCS branch organizational capacity is enhanced

Expected result: Systematic branch development is taking place in the nine most affected BDRCS branches to improve service delivery to the most vulnerable.

This component will be conducted in parallel with the other programmes after current emergency needs are met.

Disaster Risk Reduction

Objective: The capacity of targeted communities to respond to and mitigate the effects of disasters has been enhanced

Expected Result: Communities in selected vulnerable districts are reached and organised for better resilience to disasters, through newly setup BDRCS Preparedness Units

This component will be conducted in parallel with the other programmes after current emergency needs are met.

Humanitarian values

Objective: Practice of non-discrimination and social harmony among targeted BDRCS and civil society stakeholders is increased.

Expected results: Awareness of Fundamental Principles and values and practice of non-discrimination and social harmony among targeted BDRCS civil society stakeholders is increased.

This component will be conducted in parallel with the other programmes after current emergency needs are met.

Logistics

Pre-positioned stocks from the Kuala Lumpur regional logistics unit (KL RLU) warehouse, including blankets/tarpaulins and jerry cans, are due to arrive in Chittagong port by 3 December. Stocks of tarpaulins are also being mobilized from the regional logistics unit in Dubai.

The British Red Cross logistics ERU has set up operations in Dhaka with the necessary arrangements to receive goods by sea in place. Initial assessments of transport/warehouse capacity and logistics needs in the field have been completed, and a draft operations plan of action prepared. Preparations are underway for ERU team members to assist the BDRCS district offices in the receipt of the first 20,000 food parcels this week.

Procurement of relief items including food parcels and family kits is underway. Coordination is taking place with the logistics cluster, with the first meeting having taken place yesterday in the UN World Food Programme offices in Dhaka.

An up-to-date mobilization (Mob) table has been published on the Federation's disaster management information system (DMIS) and is being updated regularly. The response from donors so far for In Kind Donations (IKD`s) has been positive, and active contact with them continues. The updated table of IKDs to date are as below. <[Click here for link to most current mobilization table on DMIS](#)>

ITEM	QUANTITY (MOB.T)	AMERICAN RC	BRITISH RC	JAPANESE RC	SPANISH RC	IRANIAN RC	NORWEGIAN RC	VCI	TOTAL	BALANCE
BLANKETS	200,000	25,000	7,500	11,000	20,000	10,000	16,000	11,500	101,000	99,000
JERRY CANS	100,000		3,000	2,200				2,800	8,000	92,000
TARPS	100,000	10,000	3,000	2,200	1,100			14,800	31,100	68,900

VCI stock: - This is stock held by suppliers in the Kuala Lumpur Regional Logistics warehouse

AmCross / BritCross / Japanese Red Cross and VCI stock is all being shipped ex the KL RLU warehouse (nb - 5,000 AmCross Tarps ex Dubai)

In addition to the above, the Iranian Red Crescent is also mobilizing 5,000 relief tents, 10,000 blankets and 10,000 boxes of washing powder.

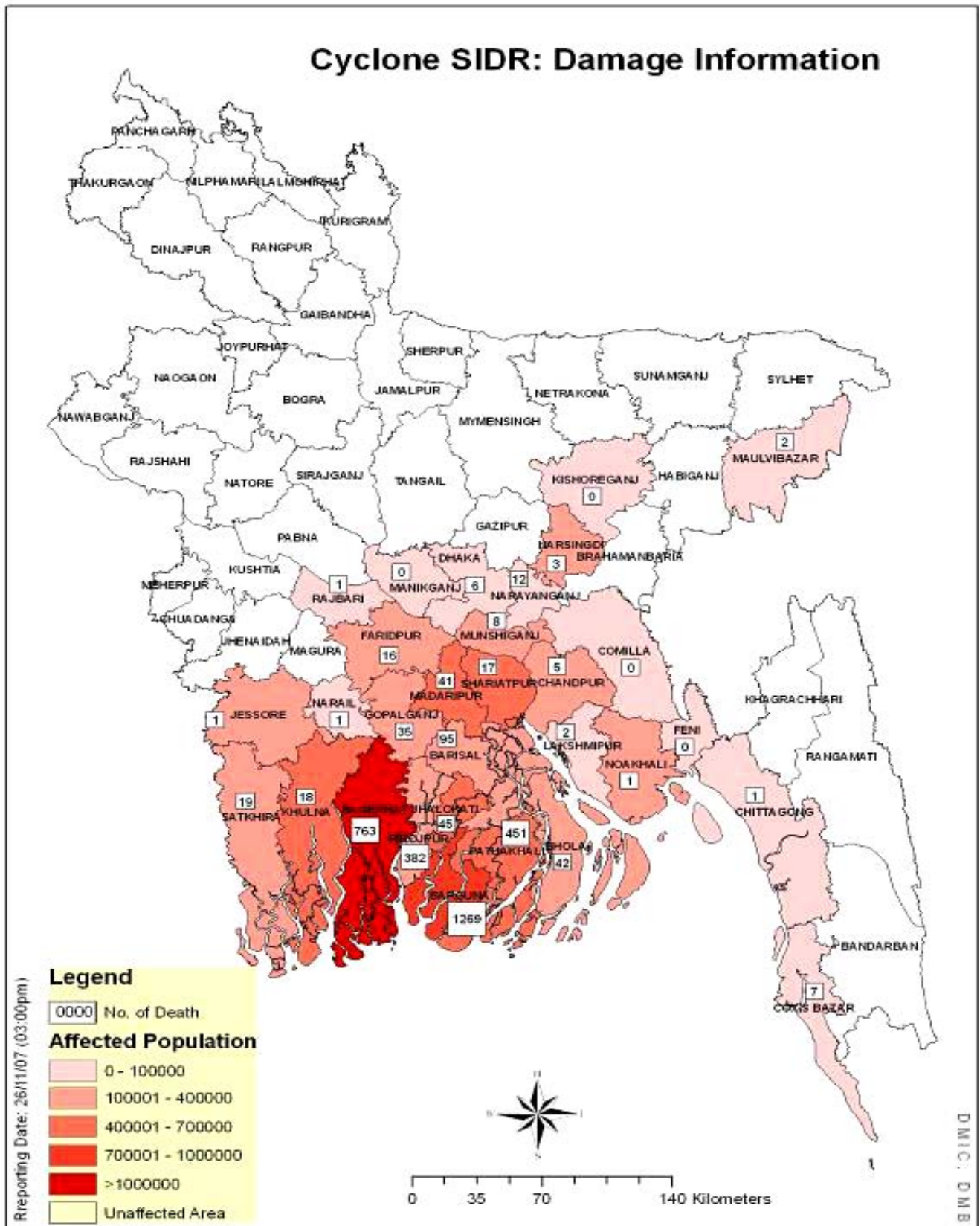
The Federation continues to work on mobilizing specific relief items to respond to the needs in the field, and donors are urged to coordinate with the KL RLU regarding outstanding needs. Shipping instructions will be provided to donors from the KL RLU, with a Consignment Tracking Number which will be issued before shipping any goods to the operation.

Communications – Advocacy and public information

Various press releases were circulated and published in local newspapers and media relating to the relief distribution. The relief operation has also received media coverage through interviews with the international media, with interviews given to BBC radio, CTV Canada, an Australian television station and a Belgium radio station. Relief distributions were also highlighted in the local news.

On 23 November, the Guardian newspaper in the UK published a report on the successful mobilization of Red Crescent volunteers as well as a story of a team leader who lost his family while saving the lives of others.

A communications officer from the British Red Cross arrived with the logistics ERU and is visiting the affected areas to work closely with the information department in the Federation. In addition, web stories and photos have also been posted on the Federation website.



The most affected areas of the Sidr in terms of deaths are Borguna, Bagerhat, Patuakhali and Pirojpur. Other affected districts are Barisal, Khulna, Satkhira, Jhalokathi, Bhola, Madaripur, Gopalganj, Shariatpur, as well as others but to a lesser extent.

How we work

All International Federation assistance seeks to adhere to the Code of Conduct for the International Red Cross and Red Crescent Movement and Non-Governmental Organizations (NGO's) in Disaster Relief and is committed to the Humanitarian Charter and Minimum Standards in Disaster Response (Sphere) in delivering assistance to the most vulnerable.

The International Federation's activities are aligned with its Global Agenda, which sets out four broad goals to meet the Federation's mission to "improve the lives of vulnerable people by mobilizing the power of humanity".

Global Agenda Goals:

- Reduce the numbers of deaths, injuries and impact from disasters.
- Reduce the number of deaths, illnesses and impact from diseases and public health emergencies.
- Increase local community, civil society and Red Cross Red Crescent capacity to address the most urgent situations of vulnerability.
- Reduce intolerance, discrimination and social exclusion and promote respect for diversity and human dignity.

Contact information

For further information specifically related to this operation please contact:

- Bangladesh Red Crescent Society: Mr. M. Shafiu Alam (secretary- general), email: bdrcs@bangla.net, phone: +88.02.935.2226.
- Country delegation in Bangladesh: Mr. Selvaratnam Sinnadurai (head of delegation), email: selvaratnam.sinnadurai@ifrc.org, phone: +88.02.933.7314, fax: +88.02.934.1631.
- South Asia regional representation in India: Mr. Al Panico (regional representative), email: al.panico@ifrc.org, phone: +91 11 2411 1122, fax: +91 11 2411 1128.
- Asia Pacific Zone office in Malaysia: disaster management unit: Mr. Latifur Rahman (regional disaster management delegate), email: latifur.rahman@ifrc.org; phone: + 60 3 2161 0892, mobile; +60 12 975 0144; regional logistics unit: Mr. Igor Dmitryuk (head of regional logistics unit), igor.dmitryuk@ifrc.org, phone: +60 3 2628 2707, fax: +60 3 2168 8573.
- In Geneva: Asia Pacific department, Ms. Christine South (operations coordinator), email: christine.south@ifrc.org, phone: +41.22.730.4529, fax: +41.22.733.0395.

[<Donor contributions list below; click here to return to the title page>](#)

Donor response to MDRBD003 - BANGLADESH - CYCLONE SIDR

TIMEFRAME: 16 Nov 07 to 16 Nov 09

LOCATION: Bangladesh

TOTAL AMOUNT SOUGHT:	24,483,160
TOTAL RECEIVED TO DATE:	2,955,438
APPEAL COVERAGE TO DATE:	12%

Updated on: 28 Nov 2007

	Currency	Amount	Coordination & Implementation	Disaster Management	Health & Care	Humanitarian Values	Organisational Development	Total
			CHF	CHF	CHF	CHF	CHF	CHF
BUDGET				24,483,160				24,483,160
FUNDING								
<u>Opening Balance</u>								
Income								
Cash contributions (received and pledged)								
American Red Cross	USD	100,000		115,900				115,900
Bangladesh - Private Donors	BDT	300,000		5,430				5,430
Canadian Red Cross (from Canadian Government)	CAD	250,000		303,750				303,750
DREF	CHF	250,000		250,000				250,000
Estonia Government	EUR	31,955		53,461				53,461
Finnish Red Cross	EUR	75,000		125,475				125,475
Icelandic Red Cross	ISK	3,000,000		57,900				57,900
Italian Govt Bilateral Emergency Fund	EUR	100,000		167,300				167,300
Japanese Red Cross	USD	175,000		202,825				202,825
Netherlands Red Cross (from Netherlands Government)	EUR	500,000		836,500				836,500
Qatar Red Crescent	USD	27,397		31,753				31,753
Swedish Red Cross	SEK	1,000,000		181,900				181,900
Swiss Red Cross (from Swiss Government)	BDT	24,986,638		452,258				452,258
VERF/WHO Voluntary Emergency Relief	CHF	2,500		2,500				2,500
Total Cash contributions				2,786,952				2,786,952
Inkind Goods & Transport (pledged)								
American Red Cross	CHF	79,100		79,100				79,100
Japanese Red Cross	CHF	89,386		89,386				89,386
Total Inkind Goods & Transport				168,486				168,486
Total Income				2,955,438				2,955,438
TOTAL FUNDING			0	2,955,438	0	0	0	2,955,438
COVERAGE				12%				12%