

EMERGENCY APPEAL



International Federation of Red Cross and Red Crescent Societies
Fédération internationale des Sociétés de la Croix-Rouge et du Croissant-Rouge
Federación Internacional de Sociedades de la Cruz Roja y de la Media Luna Roja
الاتحاد الدولي لجمعيات الصليب الأحمر والهلال الأحمر

KYRGYZSTAN: EARTHQUAKE

Appeal no. MDRKG001
11 January 2007
(Glide no. EQ-2006-000195-KGZ)

The Federation's mission is to improve the lives of vulnerable people by mobilizing the power of humanity. It is the world's largest humanitarian organization and its millions of volunteers are active in over 185 countries.

In Brief

THIS EMERGENCY APPEAL SEEKS CHF 487,745 (USD 391,474 OR EUR 301,872) IN CASH, KIND, OR SERVICES TO SUPPORT THE KYRGYZSTAN RED CRESCENT IN ASSISTING APPROXIMATELY 1,332 FAMILIES (6,660 BENEFICIARIES) FOR FIVE MONTHS.

[<click here to link directly to the attached Appeal budget, or here to view the map>](#)

Appeal history: CHF 100,000 (USD 80,855 or EUR 62,143) was allocated from the Federation's Disaster Relief Emergency Fund (DREF) on 29 December 2006.

The International Federation undertakes activities that are aligned with its Global Agenda, which sets out four broad goals to meet the Federation's mission to "improve the lives of vulnerable people by mobilizing the power of humanity."

Global Agenda Goals:

- Reduce the numbers of deaths, injuries and impact from disasters.
- Reduce the number of deaths, illnesses and impact from diseases and public health emergencies.
- Increase local community, civil society and Red Cross Red Crescent capacity to address the most urgent situations of vulnerability.
- Reduce intolerance, discrimination and social exclusion and promote respect for diversity and human dignity.

For further information specifically related to this operation please contact:

- *Kyrgyzstan Red Crescent: Aigul Atakanova, Disaster Management Coordinator, Bishkek, email: aigul.atakanova@mail.ru, phone 996 312 66 49 49; fax: 996 312 66 21 81.*
- *Kyrgyzstan Red Crescent: Rosa Shayakhmetova, Secretary General, Bishkek, email 01@redcross.elcat.kg, phone 996312 663886, fax: 996312 662181.*
- *Regional Delegation for Central Asia: Jagan Chapagain, Head of Regional Delegation, Almaty, email jagan.chapagain@ifrc.org, phone 7327 291 41 56, fax 7327 291 42 67.*
- *Regional Delegation for Central Asia: Zhanna Andagulova, Regional DM Coordinator, Almaty, email zhanna.andagulova@ifrc.org, phone 7327 291 41 56, fax 7327 291 42 67.*
- *In Geneva: Sylvie Chevalley, Regional Officer for Central Asia, email sylvie.chevalley@ifrc.org, phone 41 22 730 42 76, fax 41 22 733 03 95*

Kyrgyzstan: Earthquake; Appeal no. MDRKG001

All International Federation assistance seeks to adhere to the [Code of Conduct for the International Red Cross and Red Crescent Movement and Non-Governmental Organizations \(NGO's\) in Disaster Relief](#) and is committed to the [Humanitarian Charter and Minimum Standards in Disaster Response \(Sphere\)](#) in delivering assistance to the most vulnerable.

For longer-term programmes in this or other countries or regions, please refer to the Federation's Annual Appeal. For support to or for further information concerning Federation programmes or operations in this or other countries, or for national society profiles, please also access the Federation's website at <http://www.ifrc.org>

The situation



1,312 houses in the affected area can not be reconstructed

An earthquake measuring 5-6 on the Richter scale occurred in Kyrgyzstan on 26 December 2006 at 0200 local time. The epicentre was located in Kochkor district, Naryn oblast, 140 km south-east of the capital city of Bishkek. In Kochkor district, 31 of 34 localities were reported affected by the earthquake. There were no casualties, but over 34,000 people have reportedly been affected (some 60.7 per cent of the total population of 56,639) residing in this area. Initial assessments indicated that some 6,883 houses were damaged or destroyed. As the earthquake occurred during the night, many people left their houses in panic (and in the fear of aftershocks) and remained outside in the bitter cold until morning.

The assessment of buildings by construction specialists revealed that of the 6,883 affected residential buildings 20 were ruined by the first tremors, 1,312 are heavily damaged and can not be rebuilt, 2,392 buildings require full repair, and 3,159 buildings require partial repair. Thus, 1,332 households (6,660 people) have lost their houses completely.

In nine of the 31 localities the energy supply was cut. By 4 January the supply was restored by the government in two districts, and work continues in the remaining seven. The water supply in the Karasuu village was also interrupted, and repair efforts are underway. The mobile communications infrastructure was not affected (the landline infrastructure was limited). The overall situation is worsened by harsh winter conditions with strong winds

– day temperatures are on average 6-10 degrees below zero, while at night the temperature drops to minus 20 degrees.

On 8 January at 11:21 PM local time another earthquake measuring 5-6 on the Richter scale struck Kyrgyzstan. The epicentre was at the border with Tajikistan 90 km south-west from the oblast centre Batken. Preliminary assessments showed that 965 houses had minor damage (cracks in the walls) while three houses were damaged heavily. The total number of affected people is being calculated but preliminary information is that 10 were injured and had to seek medical assistance in hospital; one person died of a heart attack. The Kyrgyzstan Red Crescent is ready to assist the affected population from their own contingency stocks.

The needs

Immediate needs:

The Kyrgyzstan Red Crescent Society (KRCS) Naryn oblast branch disaster response team conducted an initial needs assessment on 27 December. The team consisted of three branch staff and three volunteers from the national society. Over three days (28-30 December) the national Red Crescent disaster response team of nine people– two

Kyrgyzstan: Earthquake; Appeal no. MDRKG001

branch staff and seven headquarters officers – visited households in 31 affected localities, together with the Ministry of Emergencies (MoE), local authorities and other local entities. The assessment showed the following initial needs: house reconstruction; basic non-food relief - mattresses, blankets, pillows, bed linens; warm clothes; food; hygiene items; medicines.

Historically, the Kyrgyz people have a strong tradition of settling with successor generations, and this means that there are entire streets in villages inhabited by relatives and families. As a result, after the quake people left homeless were accommodated with their neighbouring relatives. Most of the affected people did not ask for temporary shelter (i.e. tents) but for help in rebuilding their houses. According to the needs assessment, normal coping mechanisms have been exhausted, and the poorest families require mattresses, blankets and bed linen. Kochkor district is among the poorest in the country with more than 80 per cent of the population living below the poverty line. The Naryn oblast is among the least economically developed regions of the Kyrgyz Republic.

The affected population has limited food stocks for the winter and has limited prospects of support from the government. The main agricultural activity in the district is livestock breeding. Potatoes and wheat harvest in the area is normally not enough to cover the needs of local population. After the first Red Crescent distribution of food parcels, the community made a decision to split each received parcel between two families.

In total, 31 schools located in the disaster area have been affected. Out of those, three schools were heavily damaged and were closed by the government due to the danger of collapse. Because of that children are not able to attend school, and there is a risk that this situation may carry on for an extended period of time as the government's priority now is to reconstruct residential buildings.

The obstetric clinics in the area lack basic equipment and supplies. Over the past ten years the region has been losing medical staff to other less troubled areas of the country. For some villagers access to healthcare institutions remains limited due to their remoteness or absence of such institutions and even pharmacies.

There is no reliable data on the health conditions of the affected population. However, interviews with beneficiaries during household visits have led the Red Crescent to expect an exacerbation of chronic diseases and growth in the number of contagious diseases such as respiratory infections and tuberculosis. Village inhabitants lack sufficient supplies of hygiene items.

In regards to the psychological condition of the affected population, communities are still concerned about aftershocks, and efforts are underway to calm these fears. The government is focusing its support on the reconstruction of damaged houses, and providing support in the form of loans to the population.

Federation Coordination

The KRCS has a Memorandum of Understanding (MoU) with the Ministry of Emergencies (MoE) stipulating the auxiliary role of the national society to the government in disaster response. The MoU sets out its responsibility for humanitarian relief; it also covers information exchange, and overall responsibilities related to coordination. The national society cooperates with the MoE at both national and local level – Red Crescent staff is present at the regular meetings of the disaster commission, set by the government, and participates in information exchange. The national society also built links with other institutions that are supporting the operation by providing guarded warehouses and transport to remote locations.

At the headquarters level the operation is coordinated by a group headed by the Secretary General of the Kyrgyzstan Red Crescent. The disaster management department is responsible for implementing the disaster relief operation and works directly with Naryn oblast branch.

The UN plans to provide construction materials worth USD 10,000 to repair five obstetric centres and two school buildings with moderate and/or average damage in Kochkor, Akkyia, Kumdebe, Semizbel and Sarybulak localities.

Kyrgyzstan: Earthquake; Appeal no. MDRKG001

The Swiss Agency for Development and Cooperation allocated 500 kerosene stoves for the worst affected families. The distribution will be arranged by the Red Crescent Society.

Red Crescent response planning has been done in close collaboration with the Federation's Central Asia regional delegation based in Almaty.

Red Cross and Red Crescent action

The KRCS responded immediately after the disaster, and with the support of the Federation (partly based on the CHF 100,000 released from the Federation's DREF), began providing immediate assistance to affected communities. The KRCS is the only organization providing substantive support at this time. The authority's efforts will be directed towards housing and infrastructure reconstruction.

On 28 December the Red Crescent Society distributed food and non-food relief items for 60 families in the Isakeevo village. The relief items, released from the national society's contingency stock, consisted of blankets, bed linens, jerry cans, plastic bowls, cups, and other kitchen utensils, soap and hygiene items. Children from affected villages also received New Years gifts and warm clothes.



The KRCS distributed the first 400 parcels among the most vulnerable.

By 4 January 2007 the Red Crescent had procured 400 food parcels to be distributed among the most vulnerable families in the Kochkor district. Out of the entire population currently homeless, humanitarian relief is given to particularly vulnerable families – those with no provider, families with five and more children, and to disabled people. Lists of beneficiaries have been prepared by local self-administration bodies based on information from neighbourhood commissions.

Food parcels are meant to support the destitute during winter time until the new harvest. Each parcel contained:

- 50 kg bag of flour.
- 25 kg bag of rice.
- 25 kg bag of sugar.
- 10 litres of vegetable oil.

The 4-5 January distribution was carried out in the following localities and families:

Locality	Number of families covered
Kosh-Dobo	34
Ak-Kyia	35
Kochkor	134
Kum-Dobo	48
Semiz-Bel	37
Tolok	15
Cholpon	50
Karasuu	10
Talaa-Bulak	15
Son-Kol	7
Sary-Bulak	15
Total	400

Kyrgyzstan: Earthquake; Appeal no. MDRKG001

The national society plans a second distribution of non-food relief (mattresses, blankets, bed linen and hygiene sets to another 400 families on 11-12 January, 2007.

The proposed operation

The KRCS and the Federation are seeking CHF 487,745 to cover the needs of the worst affected population who have completely lost their houses and limited belongings. The Government is responsible for housing repair. The immediate operational priority need is to provide food, and non-food relief items (hygiene kits).

Objectives and activities planned

Food and nutrition

Objective: Provide an emergency food ration for 4 months consisting of rice, flour, sugar and vegetable oil for approximately 1,332 families (6,660 people).

The affected population identified for this intervention has been accommodated with their relatives who are themselves poor and suffer from food insecurity. During the emergency response operation, the KRCS distributed food parcels, sufficient to support people until the next harvest season in the country, to 400 worst-affected families. Each food parcel consisted of flour, rice, sugar and oil – products that are most consumed by the local population.

Planned activities:

- Identify beneficiaries in consultation with local communities and authorities.
- Procure supplies.
- Organize transport to the distribution point.
- Distribute emergency food items with proper recording.

Immediate non-food relief items

Objective: Provide immediate non-food relief items consisting of hygiene kits for 1,332 families (6,660 people).

Planned activities:

- Identify beneficiaries in consultation with local communities and authorities.
- Procure supplies.
- Organize transport to the distribution point.
- Distribute emergency food items with proper recording.

Rehabilitation

Objective: Reconstruct a damaged school in Semiz Bel village.

In total, 31 schools in the disaster affected area have been affected. Out of those, three schools have been heavily damaged in Kochkor, Akjar and Semiz Bel villages and were closed by the government commission due to the danger of collapse. Two big schools – in Kochkor and Akjar villages – will be reconstructed by the government, but a smaller school in Semiz Bel has not been included in the governmental plan.

The school in Semiz-Bel village was constructed from adobe in 1964, and the construction is not standard (not built to standard construction norms and codes). The school has 16 class rooms and accommodates 228 school children in two shifts. The school was heavily damaged by the earthquake: there are cracks on the ceiling and the basement is partly ruined. The national society plans to repair the school, involving construction specialists, in line with all construction codes. The local community will also be involved into the construction works through the *ashar* method (when people from the community gather and work together at their free time).

Planned activities:

- Conduct technical analysis of the damaged school in Semiz Bel village.
- Agree the reconstruction project with the state architecture department.

Kyrgyzstan: Earthquake; Appeal no. MDRKG001

- Conduct CBA for a subcontractor.
- Implement school repairs.

Communications – Advocacy and Public information

On 10 January the Kyrgyzstan National Society, as a leader of the response operation, hosted a press-conference for local non-governmental organizations and mass media to advocate for beneficiaries needs, align actions and maintain the profile of the response operation.

Capacity of the National Society

The Kyrgyzstan Red Crescent Society is widely known among the public and enjoys a positive image. It was recognized by presidential decree as a unique, independent, voluntary, non-governmental organization in 1992. The Society was recognized by the ICRC and admitted to the International Federation in 1997. The new Society statutes, regulating the division of management and governance functions, were adopted in 2004.

The Society has nine oblast (province) branches (including two cities) and 54 district branches, possesses trucks and vehicles, and has radio and telephone equipment. The KRCS employs 153 people (50 of them in the headquarters). The National Society Youth movement accounts for about 1,000 active volunteers. The Kyrgyzstan Red Crescent Society works in close cooperation with the International Federation, the ICRC, sister National Societies and other international donors as well as local NGOs.

Disaster management is a priority area for the National Society and it has good knowledge and experience in relief operations, raising disaster awareness among communities, pre-positioning relief stocks, and training in disaster management at all levels. Since 2003, the Society has been developing its human and material resources for emergency response extensively. Thus, the Kyrgyzstan Red Crescent Society at present has one national disaster response team (six HQ staff) and six branch teams (six people in each, staff and volunteers).

Capacity of the Federation

The International Federation is represented by the Head of Regional Delegation with a team of staff who are supporting the response efforts of the Kyrgyzstan Red Crescent Society. The regional disaster management coordinator, logistics manager, information officer, finance manager, reporting officer are closely involved in planning and coordinating the response, backed by the relevant technical departments in Geneva and regional finance and reporting units.

Monitoring and evaluation

The Kyrgyzstan Red Crescent Society will have its staff and volunteers at the operational site and at the level of HQ to run and monitor day-to-day activities under this operation. The preparation and provision of operational updates and a final report will be completed according to the Federation standards. The Federation Regional Delegation will provide technical monitoring support and advice to the Kyrgyzstan Red Crescent Society throughout the proposed operation. The first monitoring trip to the disaster site took place on 9-10 January. The team, consisting of the regional DM coordinator and regional logistics manager, looked at how food distribution had been organized, verified baseline data collected by the National Society and participated at a press-conference, organized by the Kyrgyzstan Red Crescent for mass media and partners.

Budget summary

See Annex 1 for details.

Susan Johnson
Director
National Society and Field Support Division

Markku Niskala
Secretary General

[Budget and map below; click here to return to the title page and contact information.](#)

Kyrgyzstan earthquake: 26 December 2006, Naryn province, Kochkor area
Appeal no. MDRKG001

RELIEF NEEDS

Food (1332 families)	133,200
Hygiene kits (1332 families)	127,836
Blanket (460 families)	14,964
Mattress (460 families)	13,468
Bed linen (460 families)	10,474

Total Relief Needs 299,942

CAPITAL EQUIPMENT

Land and buildings (school repair)	91,500
Computers and telecom equipment	1,100

TRANSPORT, STORAGE & VEHICLES

Storage - Warehouse	500
Distribution & Monitoring	5,000
Transport & Vehicles Costs	25,000

PERSONNEL

Regionally Deployed Staff	5,000
National Staff	
National Society Staff	10,000

GENERAL EXPENSES

Travel	5,000
Information & Public Relations	5,000
Office running costs	3,000
Communication Costs	3,000
Financial Charges	1,000
Other General Expenses	1,000

PROGRAMME SUPPORT

Programme Support - PSR	31,703
-------------------------	--------

Total Operational Needs 187,803

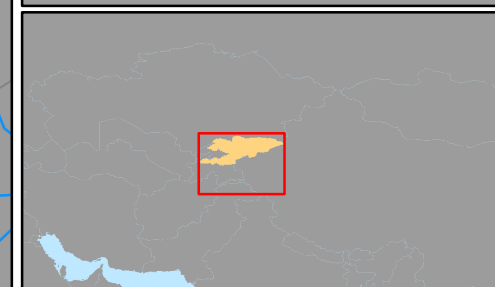
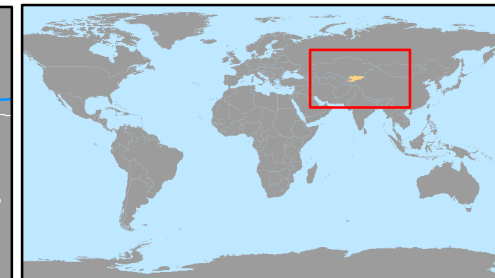
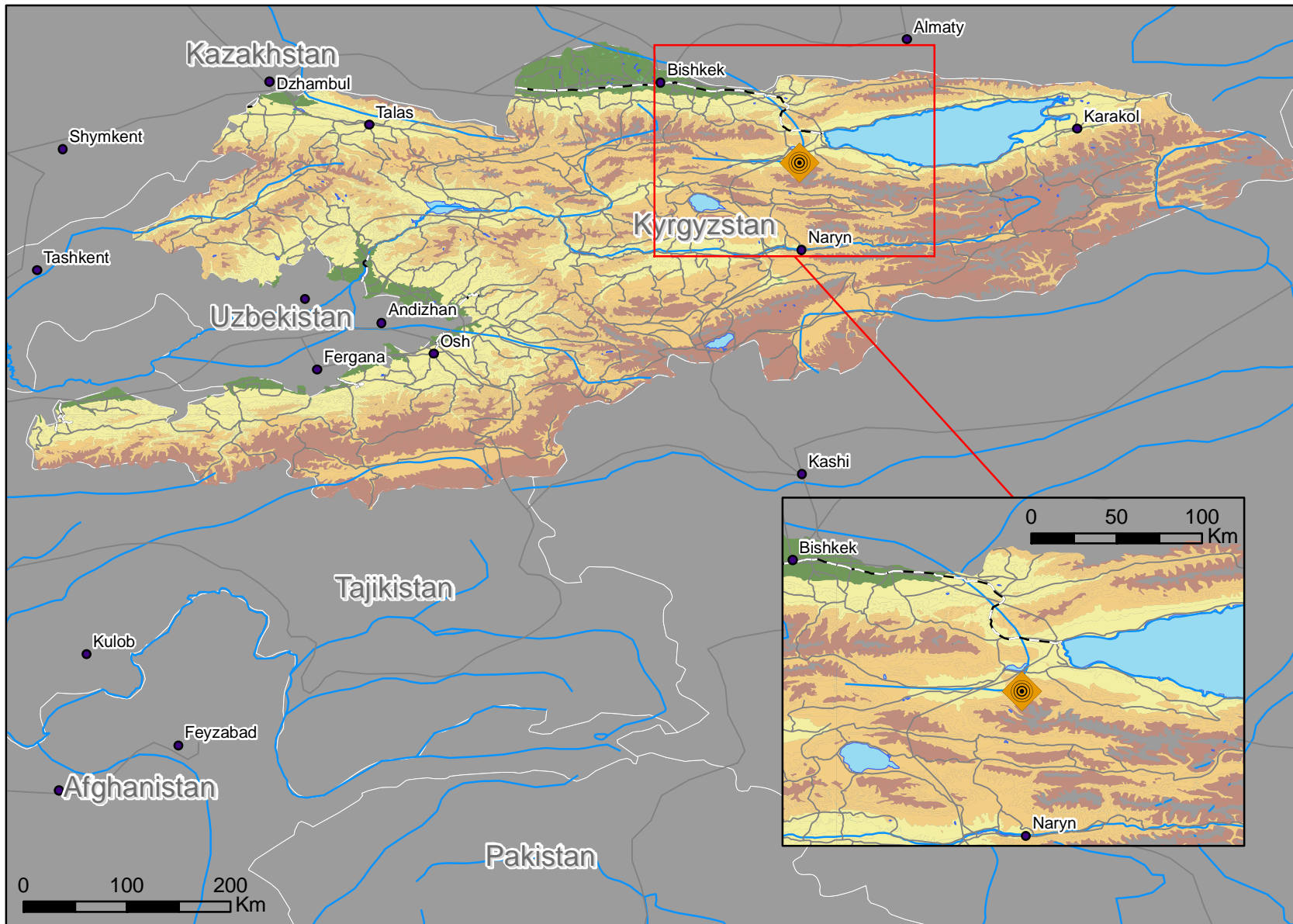
Total Appeal Budget (Cash & Kind) 487,745

Available Ressources

Net Request 487,745



Kyrgyzstan: Earthquake



- Earthquake epicenter
- Cities
- Roads
- Railways
- Elevation**
- 300 to 900 m
- 900 to 2100 m
- 2100 to 3300 m
- 3300 m and more
- Rivers
- Water bodies

The maps used do not imply the expression of any opinion on the part of the International Federation of the Red Cross and Red Crescent Societies or National Societies concerning the legal status of a territory or of its authorities.

Map data sources: ESRI, GIST, Federation