

EMERGENCY APPEAL



International Federation of Red Cross and Red Crescent Societies
Fédération Internationale des Sociétés de la Croix-Rouge et du Croissant-Rouge
Federación Internacional de Sociedades de la Cruz Roja y de la Media Luna Roja
الاتحاد الدولي لجمعيات الصليب الأحمر والهلال الأحمر

MADAGASCAR: CYCLONES

Emergency Appeal no. MDRMG002

12 April 2007

This Emergency Appeal revises the Preliminary Emergency Appeal launched on 22 March, 2007.

The Federation's mission is to improve the lives of vulnerable people by mobilizing the power of humanity. It is the world's largest humanitarian organization and its millions of volunteers are active in over 185 countries.

In Brief

THIS EMERGENCY APPEAL SEEKS CHF 2,005,707 (USD 1,649,430 OR EUR 1,238,090) IN CASH, KIND OR SERVICES TO ASSIST 60,000 BENEFICIARIES (12,000 HOUSEHOLDS) FOR 6 MONTHS.

[<Click here to link directly to the attached Appeal budget and here to go directly to the attached map>](#)

Appeal history:

A [DREF Bulletin](#) on Cyclone Clovis was issued on 19 January 2007.

A second [DREF Bulletin](#) on cyclone preparedness was issued on 16 March 2007.

A [Preliminary Emergency Appeal](#) on Cyclone Indlala was launched on 22 March 2007.

This operation is aligned with the International Federation's Global Agenda, which sets out four broad goals to meet the Federation's mission to "improve the lives of vulnerable people by mobilizing the power of humanity".

Global Agenda Goals:

- Reduce the numbers of deaths, injuries and impact from disasters.
- Reduce the number of deaths, illnesses and impact from diseases and public health emergencies.
- Increase local community, civil society and Red Cross Red Crescent capacity to address the most urgent situations of vulnerability.
- Reduce intolerance, discrimination and social exclusion and promote respect for diversity and human dignity.

The situation

Cyclone Indlala hit the north-eastern coast of the Indian Ocean island of Madagascar on Thursday, 15 March 2007. With strong winds of over 200 km/h, the cyclone ravaged the immediate area in its path (mainly Maroantsetra) and left considerable damage on the North East and North West regions. Cyclone Indlala was the fifth cyclone to hit Madagascar in the past months: Cyclone Bondo made landfall on 25 December 2006; Cyclone Clovis on 3 January 2007; Cyclone Favio on 18 January 2007; and Cyclone Gamede on 26 February 2007. This is the first time that the island has been struck by so many cyclones in such a short period. Seasonal rains have been made worse by the Inter-Tropical Convergence Zone (ITCZ) moving slightly south, resulting in continuous rains – from the end of

Madagascar: Cyclones; Revised Emergency Appeal no. MDRMG002

December 2006 to the present moment – and resultant flooding. Most recently, Cyclone Jaya hit Madagascar on 3 April 2007 causing further damage and displacement. The wind speed was 150 km/hr at the highest peak while Indlala's was 235 km/hr. Cyclone Jaya did not make significant impact compared to Indlala because vulnerable groups lost all their belongings during successive cyclone passages and related floods. The "no damage" reported by several organizations is therefore an indicator of the impact made by the precedent cyclone and the vulnerability of the population living in the repeatedly-affected areas.

According to assessments conducted by the Malagasy government, 126,017 people have been severely affected and require immediate assistance. Some 13,066 houses were completely destroyed, 91 public buildings damaged (including 29 schools), 35 bridges damaged, over 35,000 hectares (ha) of rice paddies and 12,006 ha of other crops destroyed. Assessments are being finalized; it is anticipated that these figures will increase as a result of improved access to affected areas.

With limited access and communications affected, information has been very difficult to obtain. However, reports indicate significant structural damages in the regions of Sava, Analajirofo, Diana and Sofia. Infrastructure, including water and electricity systems, has also been severely affected. Cyclone Indlala destroyed houses in the town of Antalaha as well as in the surrounding villages; roofs of poorly built houses were partially destroyed or severely damaged. The area north west of Antalaha is not yet accessible after a connecting bridge was washed away by the raging floods. In addition, 80 percent of coconut and vanilla trees have been damaged. Vulnerable persons, in particular, face difficulties in rebuilding their houses.

The Maroantsetra area is the hardest hit, with 60,000 people affected. The flooded area is a productive farming valley. Houses, crop fields, schools, a health centre and 1,200 boreholes have been flooded. Access and circulation inside Maroantsetra District is only possible by boat. However, as the floodwaters begin to recede, access by pedestrian and animals carts will improve.

In Diana and Sofia regions, located in the north eastern region, preliminary reports indicate that there were 30 hours of rain, resulting in extensive flooding which displaced at least 9,000 in Ambanja town and left 6,000 persons in Antsohihy town in need of assistance. According to preliminary UN estimates, immediate needs include access to safe water and sanitation, health care, targeted food distributions, non-food items, and basic shelter items. Stagnant waters in the flood-affected areas increase the potential for outbreaks of Dengue Fever.

Intervening actors, including the UN Office for the Coordination of Humanitarian Affairs (OCHA), United Nations Children's Fund (UNICEF) and CARE International, concur that the effects of successive heavy rains and floods destroyed the little coping capacity of the communities. A severe food crisis is foreseen in the coming months as 70 to 80 percent of rice crop has been destroyed and access to vulnerable groups is very difficult.

Accessibility: Road networks in the North West have been severely damaged. Some have been washed away or are submerged by rising and fast flowing waters from the overflowing rivers, or have been blocked off by landslides and boulders that have rolled down adjoining hills. While the Public Works Department is already at work trying to restore circulation, most of these obstructions will require a significant amount of work and mechanical resources to open the roads to normal traffic. Many smaller roads, notably those leading to the countryside, are likely to remain cut off for a while due to their lower priority as regards traffic. Presently, Befandriana, Bealanana and Mandritsara are completely isolated. The logistics entry point/hub for merchandise from international locations is planned to be the town of Mahajanga which has an international airport with a 2,300 metre runway and night-landing capability.

In the current state where roads have been damaged, and in view of the gravity of the situation, transfer of many humanitarian relief items will need to be done by boat, pirogue, carts or human back packs. It is expected that it will be, on most occasions, quite difficult to reach beneficiaries in the remote areas of the country. Some rivers have also been blocked by fallen rocks and stones, with water cascading down, making navigation almost impossible.

Food security: The north of Madagascar, which produces a substantial quantity of rice (the country's staple food), has also been affected. Cyclones, including Indlala, compound pressure on the already-precarious food security situation, especially in the country's arid southern region, where a drought has affected 582,000 people. The

Madagascar: Cyclones; Revised Emergency Appeal no. MDRMG002

situation has worsened due to the fact that successive cyclones washed away crops at the harvest period and seeds could not be secured by the communities. According to the UN Food Agriculture Organization (FAO), which is the lead agency in the food sector, seeds available in the local market are inadequate, which could compromise the next farming season.

Coordination

Coordination is being maintained with the authorities through full participation of Malagasy Red Cross Society in the National Office for Management of Risks and Disasters (BNGRC¹) and various coordinating councils at the provincial level. BNGRC is the inter-ministerial government body in charge of coordinating emergency responses in Madagascar. Ministries, UN agencies, non-governmental organizations (NGOs) and the Red Cross attend daily emergency meetings. OCHA has provided technical support to BNGRC particularly in setting up a database meant to strengthen coordination mechanisms, especially with a view to provide a rapid overview through coordinated assessments. For practical reasons, the country has been divided into five reporting zones.

The Malagasy Red Cross Society (MRCS), with support from the International Federation, continues to coordinate very closely with the French Red Cross/Indian Ocean Regional Intervention Platform (PIROI)² in all initiatives taken to support the affected population. The national society is involved in the emergency response and will address immediate shelter and health needs of the most vulnerable populations. The Federation, through the Field Assessment and Coordination Team (FACT) deployed to Madagascar, participates in coordination meetings that are held regularly. The meetings are also attended by the Malagasy Red Cross Society and other stakeholders.

The MRCS, through the support of PIROI, participated in the emergency response as soon as the earlier cyclones struck and has seconded its logistics officer to the FACT. The national society and PIROI are working closely with the World Food Programme (WFP), UNICEF, CARE and Médecins du Monde (MDM). Further co-ordination mechanisms are currently being explored with local actors and partners. MRCS is working very closely with the World Food Programme (WFP) to distribute food to affected population in the regions of Sofia and Diana. The Federation is coordinating with UNICEF in the identification of non-food items (NFI) in order to avoid duplication and to complement each other's actions. WFP has the cluster lead in logistics and will put transportation means at the disposal of partners in the affected areas.

The United Nations Resident Coordinator in Madagascar communicated to the UN Emergency Relief Coordinator, on 4 April 2007, the decision to support the Government of Madagascar's efforts to respond to floods and the consequences of cyclones Indlala and Jaya through a cluster approach. Clusters have been established in the sectors of health, nutrition, water and sanitation, emergency shelter/NFI and Early Recovery. United Nations Joint Logistics Centre (UNJLC) will provide logistics support in-country.

Table 1: An outline of clusters and their leads

Cluster	Cluster lead
Health	WHO
Nutrition	UNICEF
Water and Sanitation	UNICEF
Emergency Shelter – NFI	To be determined
Early recovery	UNDP

Red Cross and Red Crescent action

The Red Cross/Red Crescent's Field Assessment and Coordination Team conducted focus groups interviews in Ambaja, Antsohihy and Port-Berger districts. The size of the groups varied between 60 and 300 people. The team noticed that more women than men attended, while there was also a good percentage of youth. Women most often answered questions as they were the most worried about the situation of their families. Questions asked covered

¹ In French: Bureau National de Gestion des Risques et Catastrophes (BNGRC)

² In French: Plate-forme d'Intervention Régionale pour l'Océan Indien (PIROI).

Madagascar: Cyclones; Revised Emergency Appeal no. MDRMG002

their usual livelihoods, the impact of the cyclones, their coping mechanisms and their priorities. Most of the answers highlighted the need for food, recovery of basic needs and the means to be able to return to their normal way of life. In this agricultural area, this means being able to work in the field, sustain their families and redevelop their cash crops. In some areas where the river runs through, women work in the fields while men go fishing. Some individuals mentioned that they lost their working tools such axes, shovels, fishing nets and pirogues.

The findings of the needs assessment highlight the fact that these individuals – mainly women who are single heads of households, children under 5 and older people – have lost all of their belongings to the floods and need to be actively supported. Since it was harvest season, they have lost their crops and seeds as well. They need to receive basic non-food items (to restore some of their basic needs), hygiene and health items such as soap, water, and treated mosquito nets.

The MRCS is in charge of distributing food items provided by WFP in Mampikony, Ambanja, Antsohihy and Port Berger districts. Food distribution started in Mampikony district on 29 March 2007, and according to the first planning figures, MRCS will distribute 238 metric tonnes (MT) of food composed of rice, pulses, and oil to cover 11,515 families.

Responding to immediate needs, **the Federation released CHF 185,000 from its Disaster Relief Emergency Fund (DREF)** to support the MRCS initial response (a CHF 35,000 DREF allocation was released in February 2007 for cyclone preparedness). A Regional Disaster Response Team (RDRT) specialist was deployed by the Federation to conduct a preliminary assessment, and was later reinforced with two Field Assessment and Coordination Team (FACT) members to support the MRCS in assessing the situation and planning its response. On the background of the preliminary assessment, a **preliminary emergency appeal was launched on 22 March 2007** seeking CHF 773,262 in support of 32,000 beneficiaries (6,200 households) for six months.

The French Red Cross, supported by MRCS volunteers and the RDRT specialist, is engaged in a full operation comprising water and sanitation, shelter and distribution of basic relief supplies. As part of the ongoing detailed planning, the RDRT specialist is expected to train 80 volunteers in beneficiary identification and relief distribution in readiness for food and NFI distribution in Ambanja, Antsohihy, Mampikony and Port Berger as covered by the DREF.

A field report from PIROI indicated that communities in Maroantsetra needed immediate attention, including water treatment to cover needs of 6,000 persons in Ambinanitelo. Based on the report, 65 boreholes have been cleaned and/or treated. Currently PIROI and MRCS are working together in identifying 40 volunteers to conduct a hygiene promotion campaign in the flooded area. MRCS is also working with local authorities to identify beneficiaries for NFI distribution which is planned for around 15 April 2007. PIROI and MRCS support 25,000 persons (5,000 families) with water treatment, cleaning of boreholes (70 of 160 already done) and distribution of NFI including sleeping mats, jerry cans, buckets and candles for 1,000 families in Port Berger. The French Red Cross assigned a delegate in Maroantsetra for two months to assist in coordinating operations with the MRCS.

The needs

Assessments done by UN agencies, CARE International, Médecins du Monde (MDM) and by both FACT and PIROI revealed that communities lost their belongings, including clothes, kitchen tools, stocks of food and seeds, their crops, and farming and fishing tools. Lack of food and clean water is a serious concern. There are fears that malaria, respiratory infections, diarrhoea and dermatome cases could increase. Focus on the relief needs is required in order to create an environment where recovery can occur.

Livelihoods in the affected communities have been severely affected, including farming, pastoralism, fishing and small trade. A number of vulnerable groups who have lost their basic means to make a living have been identified through the needs assessments. These critical assets will need to be replaced if these groups are to begin to restore their livelihoods and increase their resilience to future projected food shortages and related economic shocks.

Madagascar: Cyclones; Revised Emergency Appeal no. MDRMG002

Proposed operation

The MRCS will focus its humanitarian assistance in the following most affected districts: Mampikony, Antsohihy, port Berger (Sofia region) and Ambanja (Diana Region). The MRCS response activities will target 12,000 vulnerable families or 60,000 persons (of whom 42,385 had their houses damaged). The national society will provide non-food items (NFI) to cover basic shelter needs (tarpaulins, blankets, pick axes and hoes), some assistance in health/WatSan (buckets, jerry cans, water purification products, soap, and insecticide-treated mosquito nets), and some relief items (sleeping mats, kitchen sets, candles and matches) to assist the families in returning to a normal life. Targeted communities will benefit from a Participatory Hygiene and Sanitation Transformation (PHAST) programme in order to reduce their vulnerability to diseases.

Due to difficult access conditions, with 14 roads damaged and 13 bridges severed in Sofia region, distribution of NFI will be supported by 4 logistic Emergency Response Unit (ERU) members, 4 relief ERU members and field personnel of the MRCS. The emergency operation will be developed in such a way that it strengthens the organizational development (OD) and overall capacity building efforts of the MRCS. The MRCS expects to draw its motivation from previous response activities, which capture good governance and management, training of new coordinators in community-based first aid (CBFA) and promoting cooperation between actors involved in the response. It is worth noting that minimal national society volunteer turnout ensures that an adequate force is available in times of crises.

The Federation Indian Ocean Islands sub-regional office is in close contact with the French Red Cross, through PIROI. The Federation has also activated a logistics ERU from the French Red Cross and a joint relief ERU led by the American Red Cross/Danish Red Cross and a member from the Benelux³. The ERU specialists will support the response of the MRCS in the field.

Plan of action

The Federation will assist the MRCS in its relief operation, targeting 60,000 affected persons (of whom 42,385 had their houses damaged) through the provision of food, non-food items and shelter items. The operation aims to minimize outbreaks of waterborne diseases, promote hygiene and strengthen the capacity of MRCS. Health education activities will be part of the projected distributions in North West region.

Overall objective: To provide humanitarian assistance to 12,000 families affected by successive cyclones – including Indlala and Jaya – and resulting floods in Sofia and Diana regions, and contribute to the restoration of their basic living conditions.

Specific objective 1: Provide 12,000 most vulnerable households in Mampikony, Ambanja, Antsohihy, and Port Berger districts with food items.

Activities:

- Train 20 MRCS volunteers from each of the 4 districts on beneficiary identification and relief distribution;
- Recruit 4 local relief officers at the MRCS headquarters level (for 6 months);
- Select beneficiaries, in coordination with WFP, using Federation criteria and with reference to SPHERE standards;
- Identify and set up distribution sites;
- Transport and distribute food rations comprising of 200 grammes rice, 60 grammes beans, 14.4 grammes vegetable oil per person per day;
- Maintain supervision with the MRCS and report.

Specific objective 2: Provide non-food items to cover basic non-food and shelter needs of 60,000 most vulnerable persons.

³ Belgian, Netherlands and Luxemburg Red Cross partnership

Madagascar: Cyclones; Revised Emergency Appeal no. MDRMG002

Activities:

- Deploy 20 trained MRCS volunteers from each of the 4 targeted districts;
- Deploy 4 MRCS local relief officers trained in relief distribution and identification of beneficiaries;
- Select beneficiaries using Federation criteria and with reference to SPHERE standards;
- Identify and set up distribution sites;
- Transport and distribute non-food items (sleeping mats, kitchen sets, candles and matches) and basic shelter items (tarpaulins, blankets, pick axes and hoes);
- Maintain supervision with the MRCS and report.

Specific objective 3: Ensure community access to adequate, safe and clean water to prevent epidemics of waterborne diseases.

Activity:

- Procure, airlift, transport, and distribute 12,000 14-litre buckets (one per family), 12,000 20 or 15-litre jerry cans (one per family) and 12,000 bottles of water purification products (one litre per family).

Specific objective 4: Promote proper hygiene and health practices.

Activities:

- Procure, airlift, transport, and distribute 14,000 long lasting insecticide-treated nets (1 per family, but 2 for families with pregnant women);
- Procure, airlift, transport, and distribute 48,000 bars of soap (4 bars per family);
- Train 40 volunteers in the Participatory Hygiene and Sanitation Transformation (PHAST) methodology;
- Develop a PHAST programme in the 4 targeted districts, to be used in community training sessions.

Specific objective 5: Strengthen the capacity of the MRCS to manage emergency operations.

Activities

- Recruit an operations coordinator for one month (OD and finance delegates currently in place will work half-time to support the emergency operation);
- Extend the support provided by the RDRT specialist for 5 months, to support the operation and to ensure that lessons learned are capitalized in the disaster preparedness programme;
- Rent temporary office space and equipment.

Capacity of the National Society

The MRCS has experience in dealing with cyclones and floods (cyclones Huddah in 2000, Manou in 2003, and Elita and Gafilo in 2004), and in effectively managing relief assistance operations. While the current capacity of the national society is limited (as regards full-time staff), it has actively participated in PIROI training initiatives as well as the regional disaster management programme over the last two years. At the headquarters, a programme coordinator oversees activities countrywide. MRCS has extensive presence in all the affected zones, namely Antsohihy, Mampikony, Befandriana, Bealanana, Mandritsara, Port-Berger and Analalava. It has a volunteer base of 1,000 who are ready for deployments in Sofia Region. Crisis groups are frequently created to boost coordination and efficiency during emergency responses.

Capacity of the Federation

The Federation assisted the MRCS in appointing a FACT for emergency assessments, development of a plan of action and preparation of this revised appeal. The Federation's regional delegation in Nairobi and the Indian Ocean islands sub-office have provided technical support through their regional disaster management, finance, organization and reporting delegates. The FACT is coordinating the disaster response, including mobilizing technical support and resources.

The Federation is closely coordinating all initiatives taken to support the affected population with the MRCS, the French Red Cross, the Government and UN agencies. Regular meetings are held with BNGRC and counterparts in

Madagascar: Cyclones; Revised Emergency Appeal no. MDRMG002

Madagascar to share information and to ensure a well coordinated response. For an effective response, the Federation will mobilize additional human resources to be deployed in affected regions and to be based in Antananarivo for general coordination of the logistics.

The Federation's operational capacity is enhanced by Logistics and Relief ERUs. The primary tasks of the Logistics ERU will be to:

- Establish a logistics hub in Mahajanga to carry out reception of air and sea freighted relief goods. In addition, they will dispatch the goods by sea and road to affected areas;
- Establish a main warehouse in Antsohihy and arrange transportation to distribution points. As access by footpaths and rivers has been compromised, especially in the North West coast, the airlifting option will be investigated in coordination with the logistics cluster for distributions to Befandriana, Mandritsara and Analalava. Goods for Port-Berge, Ambanja and Bealanana will be transported by road;
- Liaise and coordinate actions with UNJLC and other key actors to ensure that the Federation logistics operation uses all information to be as efficient and effective as possible.

A detailed and up-to-date mobilization table is available on the Federation's Disaster Management Information System (DMIS) <[Click here to view the attached latest mobilization table](#)>. The Federation will be working on mobilizing specific relief items to respond to needs in the field and it is important that donors coordinate with the Dubai Regional Logistics Unit (RLU) regarding outstanding needs. Shipping instructions will be provided to donors from Dubai RLU, with a Consignment Tracking Number which issued prior to shipping any goods to the operation. Procurement of goods and transport can also be arranged through the RLU.

The expected results of the Logistics ERU are: coordinated mobilization of relief goods; coordinated reception of all incoming goods; coordinated warehousing, as required; and coordinated and efficient dispatch of goods to the final distribution points.

The primary tasks of the Relief ERU will be:

- Supporting MRCS/Federation team on the ground in relief needs assessments;
- Developing a comprehensive relief plan of action;
- Supporting targeted beneficiary selection;
- Supporting beneficiary registration;
- Supporting relief distributions;
- Coordinating movement of supplies, in cooperation with the Logistics ERU;
- Actively participate in food, NFI and shelter cluster systems;
- Training national society staff and volunteers in relief activities;
- Providing timely distribution reports;
- Conducting ongoing monitoring and evaluation.

Monitoring and evaluation

The Federation is supporting MRCS in developing an operational plan for the relief and recovery phases. Monitoring of the operation is carried out by the MRCS and supported by Federation staff in the field. A joint real time evaluation will be carried out by the Federation/MRCS after three months, and a full evaluation upon completion of the operation. Regular updates, press releases, information and health education bulletins will be issued to raise awareness and to update interested parties on operational developments.

Budget summary

See annex below.

Susan Johnson
Director
National Society and Field Support Division

Markku Niskala
Secretary General

Madagascar: Cyclones; Revised Emergency Appeal no. MDRMG002

For further information specifically related to this operation please contact:

- **In Madagascar:** Ratsimbazafy Fanja Nantenaina, Secretary General, Malagasy Red Cross Society, Antananarivo; Email: crm@dts.mg; Phone +261.20.222.21.11; Fax +261.20.226.67.39
- **In Mauritius:** Susanna Cunningham, Federation Head of Indian Ocean Islands Sub-Regional Office; Email: susanna.cunningham@ifrc.org; Phone +230.454.69.34; Mobile +230.252.08.55
- **In Kenya:** Per Jensnäs, Federation Head of Eastern Africa Regional Delegation, Nairobi; Email: per.jensnaes@ifrc.org; Phone +254.20.283.51.24; Fax +254.20.271.84.15 or Youcef Ait-Chellouche, Acting Disaster Management Coordinator, Eastern Africa Regional Delegation, Nairobi; Email: youcef.aitchellouche@ifrc.org; Phone +254.20.283.52.11; Fax +254.20.271.27.77
- **In Geneva:** Amna Al Ahmar, Federation Regional Officer for East Africa, Africa Department; Email: amna.alahmar@ifrc.org; Phone +41.22.730.44.27; Fax +41.22.733.03.95

All International Federation assistance seeks to adhere to the [Code of Conduct](#) for the International Red Cross and Red Crescent Movement and Non-Governmental Organizations (NGO's) in Disaster Relief and is committed to the [Humanitarian Charter and Minimum Standards in Disaster Response](#) (Sphere) in delivering assistance to the most vulnerable.

For longer-term programmes in this or other countries or regions, please refer to the Federation's Annual Appeal. For support to or for further information concerning Federation programmes or operations in this or other countries, or for national society profiles, please also access the Federation's website at <http://www.ifrc.org>

For longer-term programmes, please refer to the Federation's annual appeal.

[<Map and budget and mobilization table below; click here to return to the title page>](#)

APPEAL BUDGET SUMMARY

Madagascar Cyclone Indlala

MDRMG002

hide columns E and F
when original Appeal

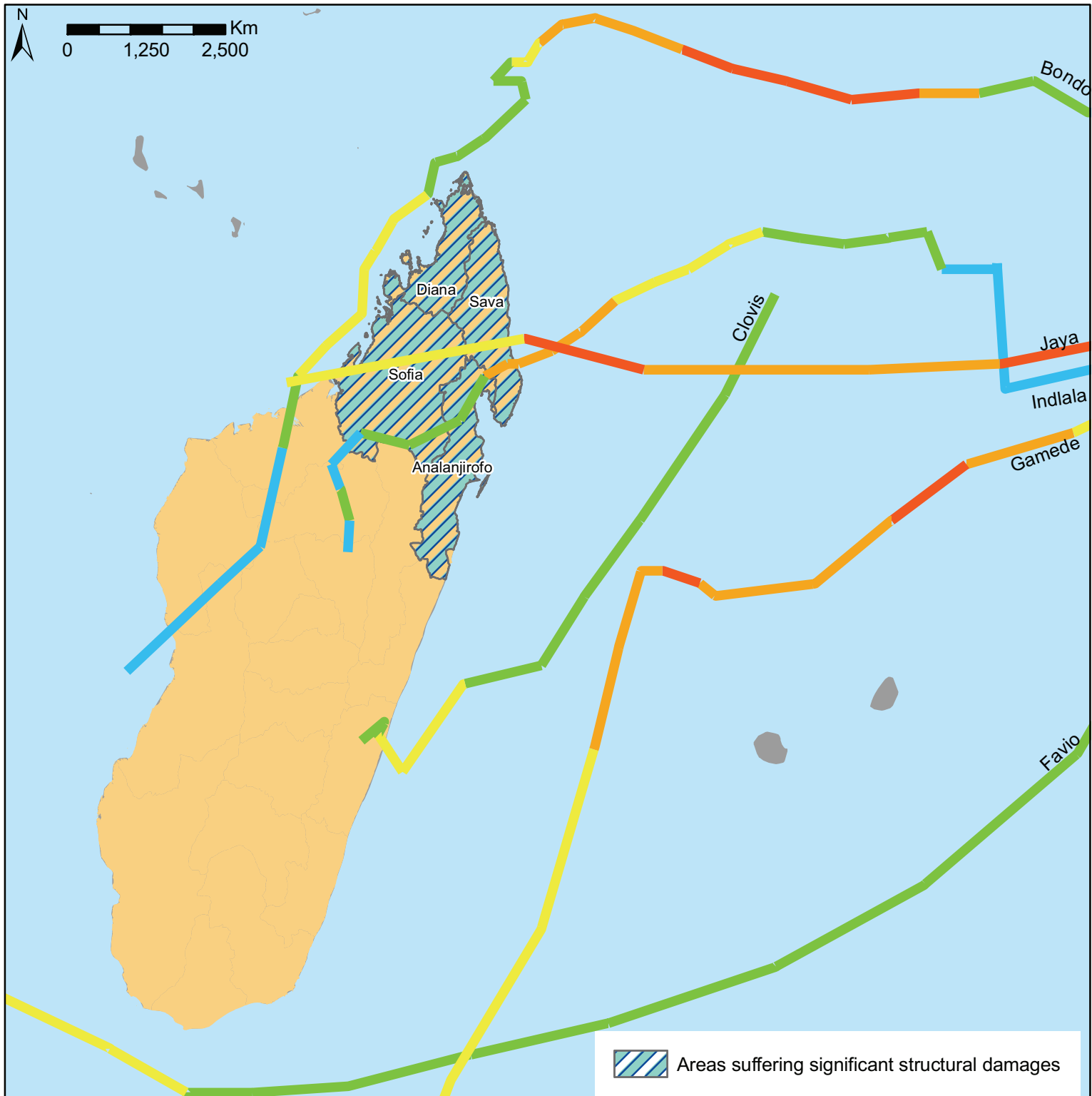
	ORIGINAL	REVISED	VARIANCE		
<u>RELIEF NEEDS</u>					
500 Shelter	86,000		86,000	11%	0%
505 Construction Materials	40,000		40,000	5%	0%
510 Clothing & Textiles	40,000	108,000	-68,000	5%	5%
520 Food	0		0	0%	0%
523 Seeds & Plants	40,000		40,000	5%	0%
530 Water & Sanitation	50,000	2,400	47,600	6%	0%
540 Medical & First Aid	50,000		50,000	6%	0%
550 Teaching Materials	5,000		5,000	1%	0%
560 Utensils & Tools	30,000	511,680	-481,680	4%	26%
570 Other Supplies & Services	220,000	110,400	109,600	28%	6%
Total Relief Needs	561,000	732,480	-171,480	73%	37%
<u>CAPITAL EQUIPMENT</u>					
580 Land & Buildings	0		0	0%	0%
581 Vehicles Purchase	0	40,000	-40,000	0%	2%
582 Computers & Telecom Equipment	10,000	5,800	4,200	1%	0%
584 Office/Household Furniture & Equip.	0		0	0%	0%
587 Medical Equipment	0		0	0%	0%
589 Other Machinery & Equipment	0		0	0%	0%
<u>TRANSPORT, STORAGE & VEHICLES</u>					
590 Storage - Warehouse	20,000	20,000	0	3%	1%
592 Distribution & Monitoring	30,000	60,000	-30,000	4%	3%
593 Transport & Vehicles Costs	20,000	462,600	-442,600	3%	23%
<u>PERSONNEL</u>					
600 International Staff	30,000	126,600	-96,600	4%	6%
640 Regionally Deployed Staff	20,000	57,900	-37,900	3%	3%
661 National Staff	0		0	0%	0%
662 National Society Staff	10,000	76,800	-66,800	1%	4%
670 Consultants	0		0	0%	0%
<u>WORKSHOPS & TRAINING</u>					
680 Workshops & Training	0	100,000	-100,000	0%	5%
<u>GENERAL EXPENSES</u>					
700 Travel	10,000	48,000	-38,000	1%	2%
710 Information & Public Relations	5,000	6,000	-1,000	1%	0%
730 Office running costs	5,000	10,000	-5,000	1%	0%
740 Communication Costs	2,000	8,100	-6,100	0%	0%
750 Professional Fees	0		0	0%	0%
760 Financial Charges	0		0	0%	0%
790 Other General Expenses	0	121,056	-121,056	0%	6%
<u>PROGRAMME SUPPORT</u>					
599 Programme Support - PSR	50,262	130,371	-80,109	7%	7%
Total Operational Needs	212,262	1,273,227	-1,060,965	27%	63%
Total Appeal Budget (Cash & Kind)	773,262	2,005,707	-1,232,445	100%	100%
Available Ressources					
Net Request	773,262	2,005,707			



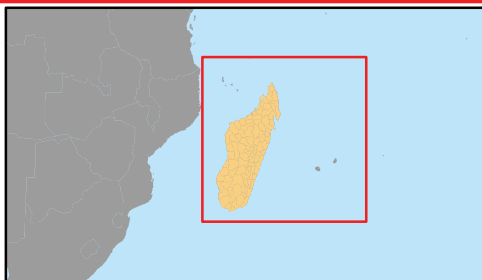
Madagascar: Cyclones







TC-2006-000193-MDG - TC-2007-000006-MDG

TC-2007-000028-MDG - TC-2007-000034-MDG



 Areas suffering significant structural damages



-  TROPICAL DEPRESSION
-  TROPICAL STORM
-  CYCLONE-1
-  CYCLONE-2
-  CYCLONE-3
-  CYCLONE-4

Mobilization Table Report

OU Name : IFRC Regional Logistics Unit

Report Date : 08/04/07 09:13

Appeal Title : MADAGASCAR INDLALA CYCLONE

Appeal No : MDRMG002

Commodity	UOM	Total Quantity Needed	Unit Price (CHF)	PMG005	Donor	CTN	PO/IKD No	IKD Status	Solicitation Status	Remarks	Estimated Total Cost (CHF)	Estimated Outstanding Cost (CHF)
				MG								
Inside Appeal Items												
HCONBUCKP14	pce	12000	4	12000							48000	48000
BUCKET, plastic, without lid, 14L												
Outstanding		12000		12000					Coverage		0%	
HCONJCANPF20	pce	12000	2.0337	12000							24404.4	24404.4
JERRYCAN, foldable, 20L, food grade plastic, screw cap 50mm				493	Borrowed from French RC	07-0000268	IKDN-AERLU-07-0027	A	Solicited	Non Std Items	1002.6141	0
Outstanding		12000		12000					Coverage		0%	
HHYGZFAE250G	pce	48000	0.25	48000							12000	12000
SOAP, Body Soap, 250, piece				792	Borrowed from French RC	07-0000269	IKDN-AERLU-07-0027	A	Solicited	Non Std Items	198	0
Outstanding		48000		To be purchased locally.					Coverage		0%	
HSHEBLANWMT1	pce	24000	5.9	24000							141600	141600
BLANKET, woven, 50%wool, 1.5x2m, medium thermal resistance				2500	Borrowed from French RC	07-0000270	IKDN-AERLU-07-0027	A	Solicited	Non Std Items	14750	0
Outstanding		24000		24000					Coverage		0%	
HSHEMATTPLA1	pce	60000	2.2	60000							132000	132000
SLEEPING MAT, plastic 180 x 90cm												
Outstanding		60000		60000					Coverage		0%	

HSHETARPW406	pce	24000	18.5417	24000							445000.8	445000.8	
TARPAULINS, woven plastic, 4 x 6 m, white/white, piece													
Outstanding		24000		24000	Borrowed from French RC	1000	07-0000271	IKDN-AERLU-07-0027	A	Solicited	Non Std Items	18541.7	0
										Coverage		0%	
HSHEZFAE0007	pce	26000	0.8	26000							20800	20800	
MATCHES, Pack of 10 boxes													
Outstanding		26000			To be purchased locally.						Coverage		0%
HSHEZFAECAND	pce	60000	0.8	60000							48000	48000	
CANDLE, Box of 10 pcs													
Outstanding		60000			To be purchased locally.						Coverage		0%
HSHEZFCH0001	pce	24000	5.42	24000							130080	130080	
MOSQUITO NET, Long Lasting Impregnated Bed Nets, Rec. 160x180x150 cm, White colour													
Outstanding		24000		24000							Coverage		0%
KRELCOOSETA	pce	12000	33	12000							396000	396000	
KITCHEN SET family of 5 persons, type "A"													
Outstanding		12000		12000							Coverage		0%
KWATZFAE0001	pce	26000	0.2	26000							5200	5200	
WATSAN, Water purification liquid 500 ml													
Outstanding		26000			To be purchased locally.						Coverage		0%
RAGRTOOLAXE2	pce	12000	5.28	12000							63360	63360	
PICK-AXE, with handle													
Outstanding		12000		12000							Coverage		0%

RAGRTOOLHOE1	pce	12000	2.8248	12000							33897.6	33897.6
HOE, head only 230 x 175 mm, 1.360g in forged steel												
Outstanding		12000		12000						Coverage		0%
ULOGLOGIMK1	pce	1	250000	1							250000	250000
ERU logistics MK1 module				1	French RC	07-0000303	IKDN-AERLU-07-0028	A	Solicited		250000	0
Outstanding		0		0						Coverage		100%
Total Cost											1750342.8	1500342.8

Notes :

1. Outstanding and Coverage calculations do not include item quantity and costs of borrowed In Kind Donations, if any.

2. color indicates borrowing type of donation.

3. Transportation costs will be additional. Amount indicated only covers cost of Goods.

Logistics and Resource Mobilization Department