

DREF operation final report



International Federation
of Red Cross and Red Crescent Societies

TUNISIA: FLASH FLOODS

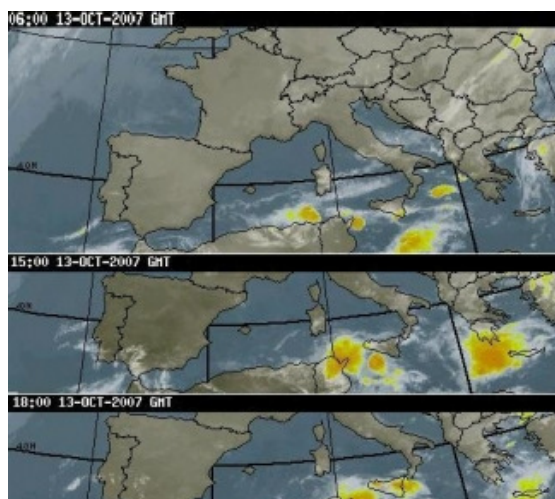
DREF operation n° MDRTN002
GLIDE n° FF-2007-000185-TUN
15 May 2008

The International Federation's Disaster Relief Emergency Fund (DREF) is a source of un-earmarked money created by the Federation in 1985 to ensure that immediate financial support is available for Red Cross Red Crescent response to emergencies. The DREF is a vital part of the International Federation's disaster response system and increases the ability of National Societies to respond to disasters.

Summary: CHF 105,000 (USD 88,975 or EUR 62,630) was allocated from the Federation's Disaster Relief Emergency Fund (DREF) on 17 October, 2007 to support the National Society in delivering assistance to beneficiaries, or to replenish disaster preparedness stocks.

This DREF Operation aimed to assist the Tunisian Red Crescent (Tunisian RC) in its efforts to assist hundred of families affected by the sudden floods.

[<click here for the final financial report, or here to view contact details>](#)



Satellite images of heavy rains in Tunisia in October 2007

The situation

During 13-16 October 2007, several regions of northern and eastern Tunisia were affected by torrential rains. 13 people were killed and 6,550 square meter area was affected¹. 184 mm of rainfall was recorded in some regions in 10 hours time and on average 108 mm in the province of Tunis.

The flash floods occurred during the long weekend of the religious celebration of Aid, causing sudden and significant damages. Houses were destroyed; personal belongings and cars swept away; transportation services paralyzed due to the railways and roads being cut, and electricity and water supply services interrupted. In poor neighborhoods, more than 1,000 families were evacuated from their houses and temporarily hosted in public shelters.

¹ <http://www.dartmouth.edu>

Red Cross and Red Crescent action

MAJOR ROLE OF THE EMERGENCY CELL ACTORS

Civilian Protection

- Saving lives
- Pumping up flood water
- Evacuating people

Police

- Providing emergency services for flood incidents

Military

- Providing technical and logistic support
- Intervening in the most affected and unreachable localities

National Society

- Distributing relief items
- Providing psychological support to the victims
- Conducting first aid activities in favor of the victims

Tunisian RC volunteers were the first to be present on the site, supporting affected people and immediately reporting the information to their local committee. Without delay, Tunisian RC secretary general released relief items from the NS stocks. Thanks to in kind donation from Finnish Red Cross, clothes were sent immediately to the local committee for distribution.

A national task force was immediately created by the local authorities. Tunisian RC, being part of the emergency cell, closely coordinated its emergency plan with the authorities. The disaster management department of the National Society mobilized its National Intervention Team (NIT). Three regional teams were organized under the supervision of the disaster management coordinator. Each team was assigned to a governorate under the supervision of the central committee concerned. Accurate and timely information was reported to the coordinator and shared with the headquarters and the task force.

Following an initial assessment made by the Tunisian RC and discussions with the secretary general of the National Society, the regional representation requested a DREF allocation to support affected families. Within the next few days, CHF 105,000 was released to organize Tunisian RC relief assistance to 500 most vulnerable families. Suppliers were immediately approached, and relief items needed were purchased.

Progress towards objectives

Tunisian RC set up effectively its plan of action according to information received from the concerned committees and arranged the distribution list in close cooperation with the authorities. The regional representation procured the relief items and delivered it to the central warehouse of Tunisian RC. The National Society dispatched the needed items to the regional committees. From here they were sent to the secondary warehouses, either the Tunisian RC's or in some cases partners', as per arrangements made locally. All logistics procedures, including transport vouchers and receipts to be signed by the families, were in place in order to facilitate the distribution process.

The final assessment and survey in the three governorates affected was completed one week after the disaster. Lists were transmitted to the central committee of the Tunisian RC, with a copy provided to the International Federation's North Africa regional representation. These detailed lists indicated families' needs, and reflected the significance of the floods and its impact on poor districts. The families affected were in general composed of single-parents, disabled people, and unemployed. In line with the needs identified, the initial assessment was revised in order to include additional families (41) and support replenishment of the Tunisian RC stocks.

Based on the lists transmitted by the regional committees, the central committee of the Tunisian RC completed its distribution plans for the three affected governorates and shared with the local authorities (governors of the affected regions) to coordinate the support provided to the families. This coordination led to delays in the initial time schedule of the distribution. The distributions started in the most affected area, Sabalat Ammar (locality of Kalaat Andalous), according to the schedule set by the Tunisian RC in presence of the president of the National Society and high representatives of the government. The distribution was covered by the local media and national TV.

70 volunteers were mobilized for the emergency phase, and 100 volunteers from the regional and local committees continued to support beneficiaries within affected communities.

Relief distributions (food and basic non-food items)

Objective: To provide quality relief items in accordance with the needs of the beneficiaries (541 families).

The distribution was conducted in good conditions and the items (100 camp beds, 1,500 blankets, 600 food parcels, and 1,500 mattresses) reached all the identified beneficiaries without delay. Each food parcel included 10 kg couscous, 10 kg rice, 10 kg pasta, 10 kg canned food, 1 kg sugar, and 10 lt. vegetable oil.

Activities planned:

- To provide psychological support to the families;
- To record data regarding the affected people and their specific needs (thanks to the data collected by the National Society volunteers during the assessment phase, the Tunisian RC outlined its plan of relief items distribution and its target beneficiaries);
- To implement the schedule of the relief items distribution and inform the target beneficiaries of the dates and places (each regional committee has coordinated with its local committees the negotiation with local actors in order to find places for the distributions. Indeed, most of the local committees did not have their own office and managed to find a place to stock and distribute the items. Other committees have adopted a door to door distribution).

Impact:



Tunisian RC distributed significant quantities of relief items to the people affected by the floods in the country

As a result of this DREF operation, important quantities of relief items were distributed to more than 500 families (composed from three to five members) within the affected regions. The distributed items were in accordance with the immediate needs of the affected people.

Procurement of additional items to support the work of the disaster management unit was made possible following effective price negotiations on some items (mattress, food parcels, and blankets) with local suppliers. Additional items included:

- 200 boots;
- 200 special raincoats;
- Contribution to the purchase of 200 first aid volunteers' uniforms;
- 1 PC to support the communication department of the central committee of the Tunisian RC.

Psychological support was provided by the volunteers to the families affected to cope with the loss and be able to move forward beyond this disaster.

Challenges:

For the second time in 2007, Tunisian RC faced this type of disaster. The National Society, learning and building on its experience from the first floods², showed valuable participation to this national emergency operation.

² Please go to the following link to access the final report on the Tunisia Floods DREF operation MDRTN001 - <http://www.ifrc.org/docs/appeals/07/MDRTN001final.pdf>

Conclusion

Lessons learned:

- **Value of an efficient and timely communication:** As a result of this operation, an important quantity of relief items was distributed to the affected families during the emergency and post disaster rehabilitation phase. An effective communication and cooperation between the branch, the headquarters and the regional representation of the International Federation, plus several actors involved in the operation, led to an effective and quick response;
- **Dedication and increased motivation of Tunisian RC volunteers:** The enthusiasm and commitment of Red Crescent volunteers were much appreciated by the beneficiaries of affected communities, and well recognized by the local authorities;
- **Increased visibility and recognition of the National Society's role in the civil society:** This operation has reinforced the visibility and the role of the Tunisian RC as an auxiliary to the government. Thanks to the positive impact of this operation, the local authorities of the governorate of Manouba have provided the regional committee of the Tunisian RC with a permanent local staff to support its activities.
- **Donors' confidence:** The Tunisian RC has been internationally supported during this operation. The Swedish Red Cross has immediately renewed its support and sent new containers of used items. In addition, the United Arab Emirates Red Crescent has provided the National Society with USD 5,000.
- **Necessity to address better the consequences of climate change:** The necessity to understand the consequences of climate change and to develop/strengthen Tunisian RC's disaster risk reduction programme (vulnerability and capacity assessment, public awareness programmes) was underlined.

How we work

All International Federation assistance seeks to adhere to the [Code of Conduct for the International Red Cross and Red Crescent Movement and Non-Governmental Organizations \(NGO's\) in Disaster Relief](#) and is committed to the [Humanitarian Charter and Minimum Standards in Disaster Response \(Sphere\)](#) in delivering assistance to the most vulnerable.

The International Federation's activities are aligned with its Global Agenda, which sets out four broad goals to meet the Federation's mission to "improve the lives of vulnerable people by mobilizing the power of humanity".

Global Agenda Goals:

- Reduce the numbers of deaths, injuries and impact from disasters.
- Reduce the number of deaths, illnesses and impact from diseases and public health emergencies.
- Increase local community, civil society and Red Cross Red Crescent capacity to address the most urgent situations of vulnerability.
- Reduce intolerance, discrimination and social exclusion and promote respect for diversity and human dignity.

Contact information

For further information specifically related to this operation please contact:

- In Tunisia: Dr. Tahar Cheniti, Secretary General, Tunisian Red Crescent; phone: + 216 71 320 630; fax: + 216 71 320 151; email: hilal.ahmar@planet.tn
- In Tunisia: Anne Elisabeth Leclerc, Head of Regional Representation, Regional Representation for North Africa; phone: + 216 71 862 485; fax: + 216 71 862 971; email: ae.leclerc@ifrc.org
- In MENA Zone: Marwan Jilani, Head of Zone Office (temporary in Amman; phone: +962 6 562 79 34; fax: +962 6 569 45 56; email: marwan.jilani@ifrc.org; or Eduard Tschan, Deputy Head of Zone Office; phone: +962 79 504 29 22; fax: +962 6 569 45 56; email: eduard.tschan@ifrc.org;
- In Geneva: Linda Stops, Operations Coordinator, Operations Coordination Team; phone + 41 22 730 4300; fax: +41 22 733 0395; email: linda.stops@ifrc.org

[<final financial report below; click here to return to the title page>](#)

International Federation of Red Cross and Red Crescent Societies

MDRTN002 - Tunisia Flash Floods (2007)

Final Report

Selected Parameters	
Reporting Timeframe	2007/10-2007/12
Budget Timeframe	2007/10-2007/12
Appeal	MDRTN002
Budget	APPEAL

All figures are in Swiss Francs (CHF)

I. Consolidated Response to Appeal

	Health & Care	Disaster Management	Humanitarian Values	Organisational Development	Coordination & Implementation	TOTAL
A. Budget		105,000				105,000
B. Opening Balance		0				0
Income						
<u>Other Income</u>						
<i>DREF Allocations</i>		105,000				105,000
C5. Other Income		105,000				105,000
C. Total Income = SUM(C1..C5)		105,000				105,000
D. Total Funding = B + C		105,000				105,000
Appeal Coverage		100%				100%

II. Balance of Funds

	Health & Care	Disaster Management	Humanitarian Values	Organisational Development	Coordination & Implementation	TOTAL
B. Opening Balance		0				0
C. Income		105,000				105,000
E. Expenditure		-105,000				-105,000
F. Closing Balance = (B + C + E)		0				0

International Federation of Red Cross and Red Crescent Societies

MDRTN002 - Tunisia Flash Floods (2007)

Final Report

Selected Parameters	
Reporting Timeframe	2007/10-2007/12
Budget Timeframe	2007/10-2007/12
Appeal	MDRTN002
Budget	APPEAL

All figures are in Swiss Francs (CHF)

III. Budget Analysis / Breakdown of Expenditure

Account Groups	Budget	Expenditure					TOTAL	Variance
		Health & Care	Disaster Management	Humanitarian Values	Organisational Development	Coordination & Implementation		
A							B	A - B
BUDGET (C)		105,000					105,000	
Supplies								
Clothing & textiles	43,000		58,334			58,334	-15,334	
Food	43,000		27,656			27,656	15,344	
Other Supplies & Services	6,000		4,065			4,065	1,935	
Total Supplies	92,000		90,055			90,055	1,945	
Transport & Storage								
Storage			1,585			1,585	-1,585	
Transport & Vehicle Costs	1,000		959			959	41	
Total Transport & Storage	1,000		2,544			2,544	-1,544	
Personnel								
National Staff			1,226			1,226	-1,226	
Total Personnel			1,226			1,226	-1,226	
General Expenditure								
Travel			307			307	-307	
Information & Public Relation			1,086			1,086	-1,086	
Office Costs	5,175		2,595			2,595	2,580	
Communications			358			358	-358	
Financial Charges			4			4	-4	
Total General Expenditure	5,175		4,350			4,350	825	
Programme Support								
Program Support	6,825		6,825			6,825	0	
Total Programme Support	6,825		6,825			6,825	0	
TOTAL EXPENDITURE (D)	105,000		105,000			105,000	0	
VARIANCE (C - D)			0			0		