

# DREF operation



International Federation  
of Red Cross and Red Crescent Societies

## Benin: Meningitis

DREF operation n° MDRBJ001  
GLIDE n° EP-2008-000027-BEN  
21 February, 2008

The International Federation's Disaster Relief Emergency Fund (DREF) is a source of un-earmarked money created by the Federation in 1985 to ensure that immediate financial support is available for Red Cross and Red Crescent response to emergencies. The DREF is a vital part of the International Federation's disaster response system and increases the ability of national societies to respond to disasters.

**CHF 50,000 (USD 44,000 or EUR 30,000) is requested from the Federation's Disaster Relief Emergency Fund (DREF) to support the national society in delivering immediate assistance to some 1.8 million beneficiaries. Un-earmarked funds to repay DREF are encouraged.**

**Summary:** The Red Cross of Benin has deployed its team of volunteers in northern Benin to intervene in the meningitis outbreak. The epidemic has so far claimed 29 lives according to the assessment conducted by the Red Cross of Benin. In its usual role of complementing government efforts, the Government of Benin has requested the Red Cross to embark on awareness and mobilization activities for its Expanded Programme on Immunization (EPI) to prevent the spreading of the disease. The National Society is therefore planning to train and retrain some of its volunteers in the mobilization of the vulnerable communities for immunization and in carrying out health education in these communities.

**This operation is expected to be implemented over 3 months, and will therefore be completed by May, 2008; a Final Report will be made available three months after the end of the operation (by August, 2008).**

[<click here to view the budget; here to view the map, and here to view contact details>](#)

## The situation

Again this year, following a warning from the World Health Organization (WHO), meningitis outbreaks are on the increase in West and Central Africa. In the Republic of Benin, 4 out of the 12 counties have recorded cases of meningitis between the months of January and February 2008. The situation is very worrisome as the infection is spreading rapidly. Presently, 289 people have been infected, with 29 deaths. The trend is expected to continue as the meningococcal bacteria thrive mainly during the dry season (January-May). Given this situation, it is paramount that the Benin Red Cross commences early response activities to increase preparedness and prevent further spreading.

## Coordination and partnerships

With support from the Federation's West Coast regional office, the Red Cross Society of Benin will be working in collaboration with the Ministry of Health. The Ministry of Health has given the Benin Red Cross the lead role to sensitize and mobilise the people for vaccination exercises put in place by the government in the affected areas. The government is providing treatment at the local hospitals for referred cases.

## Red Cross and Red Crescent action

During the first week of February, the Red Cross of Benin through its team of volunteers carried out an assessment of the situation in the affected areas. The Red Cross with its limited resources immediately embarked on sensitization and social mobilisation activities in the affected areas. This is aimed at strengthening the epidemiological surveillance put in place by the government, monitoring the expanded

programme on immunization of the government and referring suspected cases to the nearest health centres to prevent the spread in these communities. However, the Red Cross needs to train and retrain its team of volunteers to be able to reach out to most of the communities at risk.

The International Federation, through its delegation in Lagos, Nigeria, continues to work closely with the National Society by supporting its staff and volunteers in all activities of the Red Cross by ensuring that management as well as operational issues are directed to and implemented within the principles and core values of the Red Cross Movement; reaching the needs of the most vulnerable. The West Coast regional office team have been providing technical advice and support as well as encouraging Benin Red Cross in this regard. The replication of training and empowerment of communities by the National Society staff and volunteers are ongoing as epidemics are still frequent in Benin. The activities of the Red Cross are targeting those communities who still find it difficult to forestall the threats posed by the factors that can lead to disease outbreak.

## The needs

**Beneficiary selection:** The beneficiaries of this operation are people living in the affected and neighboring communities in the 4 affected counties. Communities at-large as well as Red Cross volunteers and staff shall indirectly benefit from the operation through health education and training in the prevention and early referral of meningitis. Red Cross volunteers from the local branches are being selected for the operation because of their knowledge of the culture and tradition of the community people. This will enable them to effectively penetrate the communities during mobilization exercise as most of the people in these communities are illiterate; hence the need to communicate with them in local languages.

## The proposed operation

### Emergency health

**Objective: To reduce the vulnerability of the population and the most vulnerable to Meningitis in the counties of Atacora, Donga, Alibori and Borgou.**

#### Activities planned:

- Training of 300 volunteers;
- Sensitization of the affected population through home visits and public lectures;
- Early case detection and referral;
- Monitoring of the expanded programme on Immunization;
- Advocacy to the government and other actors;
- Community mobilization and house-to-house campaign on symptoms and preventive measures for meningitis;
- Production and distribution of IEC materials concerning measles transmission and preventive measures.

#### Expected outcomes:

- The knowledge and capacity of 300 Red Cross volunteers of the branches in the affected areas are improved;
- The vulnerable communities are protected against meningitis through awareness activities of the Red Cross volunteers;
- The vulnerable communities are able to detect the first symptoms of meningitis;
- People affected are referred to the nearest health centres for treatment;
- The populations are sensitized on early alert;
- The epidemiological surveillance of the Ministry of Health is strengthened by the network of volunteers of the Red Cross of Benin;
- Community people's participation in EPI has increased through Red Cross volunteers' activities;
- The volunteers' network is active.

### How we work

*All International Federation assistance seeks to adhere to the [Code of Conduct for the International Red Cross and Red Crescent Movement and Non-Governmental Organizations \(NGO's\) in Disaster Relief](#) and is committed to the [Humanitarian Charter and Minimum Standards](#)*

[in Disaster Response \(Sphere\) in delivering assistance to the most vulnerable.](#)

The International Federation's activities are aligned with its Global Agenda, which sets out four broad goals to meet the Federation's mission to "improve the lives of vulnerable people by mobilizing the power of humanity".

**Global Agenda Goals:**

- Reduce the numbers of deaths, injuries and impact from disasters.
- Reduce the number of deaths, illnesses and impact from diseases and public health emergencies.
- Increase local community, civil society and Red Cross Red Crescent capacity to address the most urgent situations of vulnerability.
- Reduce intolerance, discrimination and social exclusion and promote respect for diversity and human dignity.

**Contact information**

**For further information specifically related to this operation please contact:**

- **In Benin:** Hubert CHABI, Executive Secretary, Red Cross Society of Benin, Porto-Novo; phone: +229 97277975; email: [chabihubert@yahoo.fr](mailto:chabihubert@yahoo.fr)
- **In Nigeria:** Chinyere Emeka-Anuna, Acting Head of Federation West Coast Regional Office, Lagos; phone: +234 12. 695. 228; Fax: +234. 12. 695.229; email: [chinyere.emekaanuna@ifrc.org](mailto:chinyere.emekaanuna@ifrc.org)
- **In Dakar:** Alasan Senghore, Head of Zone, West and Central Africa Zone, phone:+221 869 36 40, Fax:+221 33 820 25 34, email: [alasan.senghore@ifrc.org](mailto:alasan.senghore@ifrc.org) ; Hans Ebbing, Health Coordinator, West and Central Africa Zone, email: [hans.ebbing@ifrc.org](mailto:hans.ebbing@ifrc.org)
- **In Geneva:** Niels Scott, Federation Operations Coordinator (Africa); email: [niels.scott@ifrc.org](mailto:niels.scott@ifrc.org); telephone +41.22.730.4527; fax + 41.22.733.0395

[<DREF budget and map below; click here to return to the title page>](#)

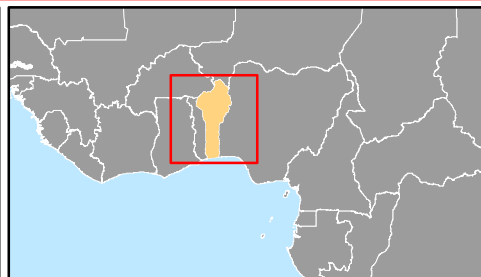
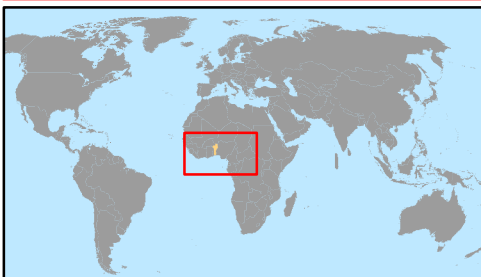
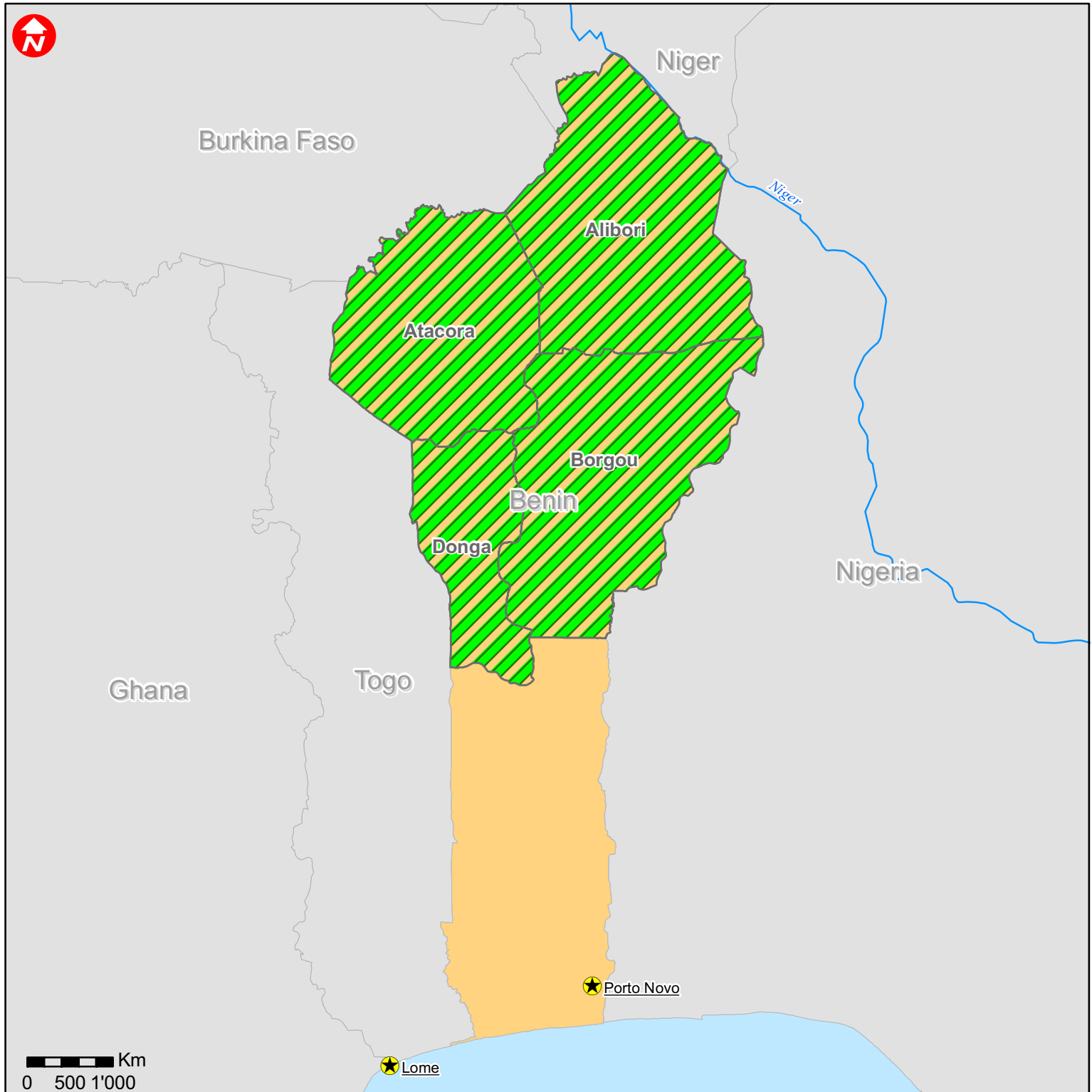
**BUDGET MENINGITIS CAMPAIGN OPERATION - BENIN RED CROSS**

	Number	Amount CHF
<b>SENSITIZATION MATERIALS</b>		
Posters	1,000	2,500
Tee shirt	400	2,000
Pamphlets	50,000	3,750
Printing of volunteers guide	4,750	1,188
Batteries for megaphone (50 set of batteries x 50 megaphones )	50	1,875
<b>Subtotal sensitization material</b>		<b>11,313</b>
<b>TEACHING MATERIALS</b>		
Realms of paper	50	188
Blue pens	500	125
Markers	100	50
Padex Flipcharts	10	25
Celotapes	5	25
Photocopies of monitoring forms	1	300
<b>Subtotal Training materials</b>		<b>713</b>
<b>TRANSPORT</b>		
<b>Transport &amp; Vehicles</b>		
Fuel for vehicles and motorcycles	2,000	2,250
Vehicle and Motorcycle maintenance	1	1,125

<b>Subtotal transport</b>		<b>3,375</b>
<b>PERSONNEL AND VOLUNTEERS</b>		
NS Staff		
Perdiem for coordination (15 staff x3 Days =45 )	45	1,688
Accomodation supervisors	45	2,250
Perdiem for Driver (3 Drivers x 3 days = 9 )	9	225
Perdiem for volunteers = (300 vol x 7 days =2100)	2,100	10,500
Transport Volunteers = (300 Vol x 4 days = 1200)	2,100	1,575
Lunch for volunteers =(300x4days = 1200)	2,100	5,250
<b>Subtotal Personnel</b>		<b>21,488</b>
<b>REPORTAGE &amp; MEDIA</b>		
Media Coverage (3 Local Radio Stations x 4 days = 12)	12	1,500
Digital Camera (acquisition)	2	600
<b>Subtotal reportage &amp; media</b>		<b>2,100</b>
<b>GENERAL EXPENSE</b>		
Other General Expense	1	1,000
Stationery	1	250
Telephone, internet, fax, tel conf	1	1,500
<b>Subtotal General Expense</b>		<b>2,750</b>
<b>WEST COAST OFFICE SUPORT COST</b>		<b>5,000</b>
<b>Subtotal West coast Office support cost</b>		<b>5,000</b>
<b>TOTAL BUDGET BEFORE PSR</b>		<b>46,738</b>
<b>PSR 6,5%</b>		<b>3,038</b>
<b>TOTAL GLOBAL</b>		<b>49,775</b>



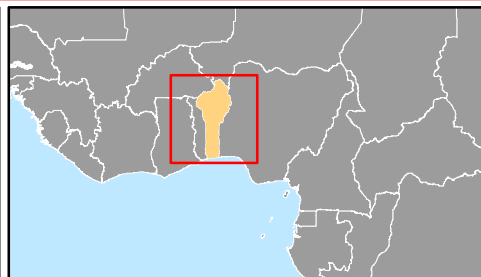
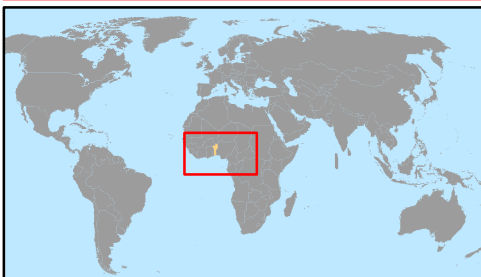
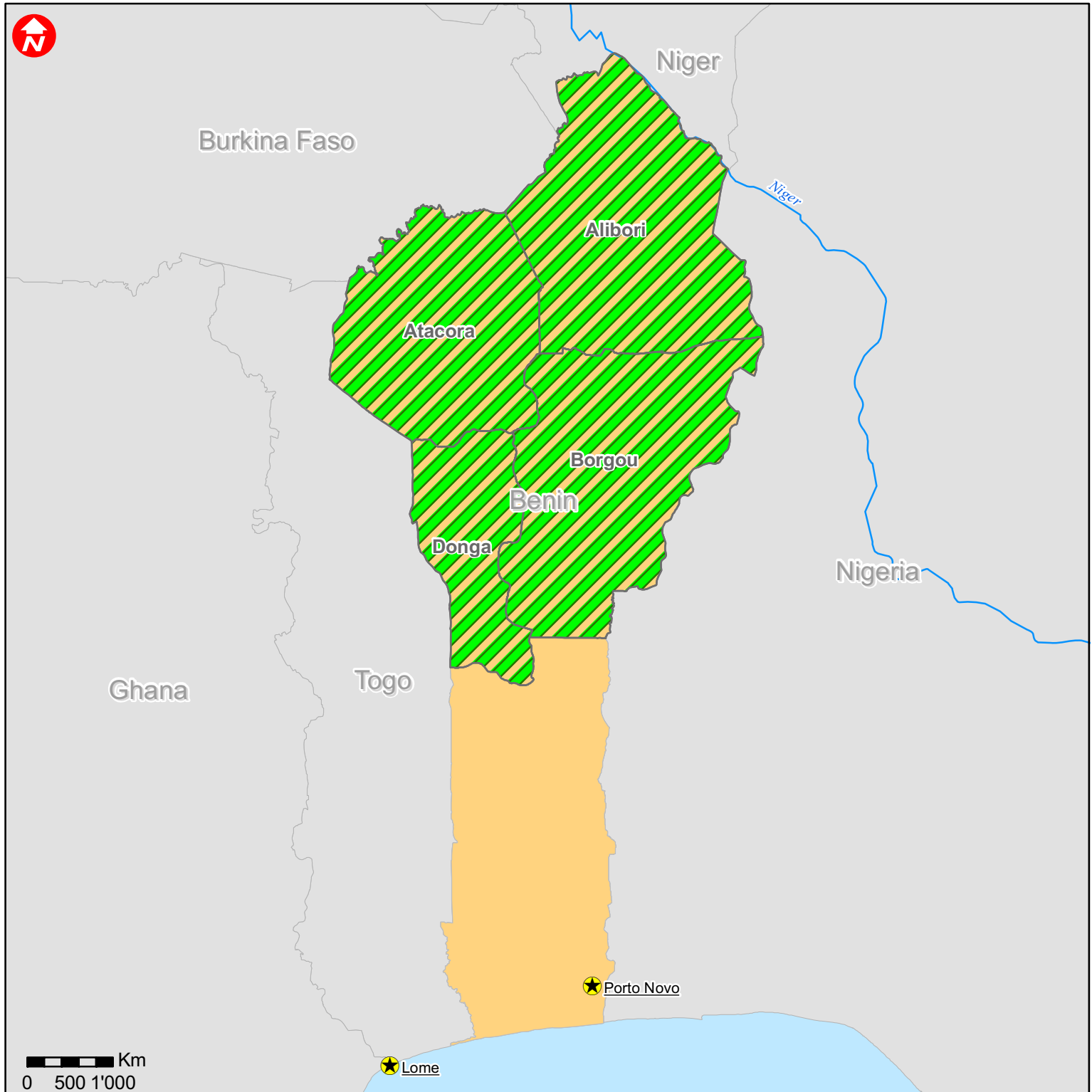
# Benin: Epidemic



- Affected area
- Capitals



# Benin: Epidemic



- Affected area
- Capitals