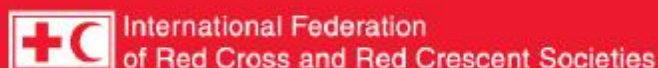


# DREF operation



## Democratic Republic of the Congo: Cholera in Katanga

DREF operation n° MDRCD004  
GLIDE n° EP-2007-000232-  
COD  
22 February, 2008

The International Federation's Disaster Relief Emergency Fund (DREF) is a source of un-earmarked money created by the Federation in 1985 to ensure that immediate financial support is available for Red Cross and Red Crescent response to emergencies. The DREF is a vital part of the International Federation's disaster response system and increases the ability of national societies to respond to disasters.

**CHF 82,861 (USD 75,447 or EUR 50,844)** has been allocated from the Federation's Disaster Relief Emergency Fund (DREF) to support the national society in delivering immediate assistance to some **10,000** beneficiaries in Lubumbashi, Likasi, Haut Lomami, Tanganyika and Haut-Katanga. Un-earmarked funds to repay DREF are encouraged.

**Summary:** Cholera outbreaks are a recurrent health problem in Katanga. The rate of registered cases and the death toll is increasing due to poor sanitation conditions. To counteract the threat, the Red Cross will carry out social mobilization in the communities and activities to break the pattern of propagation. Red Cross volunteers will be instrumental in the efforts to reverse the effects of cholera.

**This operation is expected to be implemented over 2 months, and will therefore be completed by April, 2008; a Final Report will be made available three months after the end of the operation (by July, 2008).**

[<click here for the DREF budget \(if available\), here for contact details, or here to view the map of the affected area>](#)



Red Cross volunteers preparing for sensitisation in the field

## The situation

The DRC's Katanga Province continues to be affected by a cholera epidemic that started in mid-December, 2007. To date, about 19 health zones out of 67 are affected. In 2007, the total population in the affected communities was 9,629,888 people. Health Ministry and WHO reports show that the epidemic is extending in many big cities of the province. One hundred and ten deaths are reported out of more than 4,000 cases registered in Lubumbashi, Haut Lomami, Likasi, Tanganyika, and Haut Katanga. According to the World Health Organization (WHO), the DRC (especially in the East) is one of the five countries in the world where serious cholera epidemics have periodically occurred (1981, 2002-2003, 2004, 2006, 2007-2008) in Katanga, South Kivu and Eastern Kasai.

## Coordination and partnerships

A provincial crisis committee headed by the national health ministry (and in which other partners are involved) is leading the management of the epidemic. A similar structure is created both at districts and commune levels. The World Health Organization is in charge of providing inputs to the crisis committee. UNICEF and other partners bring information to provincial committee of crisis and make a direct intervention towards affected health zones.

## Red Cross and Red Crescent action

The Red Cross is involved in the provincial crisis committee at all levels. About one hundred volunteers are mobilized to carry out sensitization activities (door-to-door sensitization), refer patients to cholera treatment centres and conduct advocacy campaigns. After the initial needs assessment, the provincial committee of the Red Cross identified some needs and has developed a plan of action to respond to the situation.

### The needs

- Social mobilization and health and hygiene education (megaphones, posters, pamphlets, materials for visibility, radio and television programmes, motors, bicycles, etc.
- Protection material: boots, combinations, gloves, masks, etc.
- Inputs for water purification and sanitation: chlorine, soap, sprayers, spades, pickaxes, etc.
- Incentives for volunteers.

## The proposed operation

### Relief distributions (food and basic non-food items)

**Objective: To distribute non-food items to vulnerable groups according to a needs assessment and appropriate beneficiary selection criteria.**

#### Activities planned:

- Develop beneficiary targeting strategy and registration system to deliver intended assistance.
- Distribute relief supplies (soap, etc.) and control supply movements from point of dispatch to end user.
- Monitor and evaluate relief activities and provide reporting on relief distributions.
- Develop an exit strategy.

### Water, sanitation, and health and hygiene promotion

**Objective: To reduce the risk of waterborne diseases through the provision of safe water, adequate sanitation, and health and hygiene promotion to the affected communities.**

#### Activities planned:

- Provide potable water, appropriate sanitation and hygiene promotion for 2,000 families in main towns affected by cholera (water chlorination).
- Sensitize populations of affected areas on hygiene promotion through PHAST.
- Disinfect 2,000 houses in the affected areas.
- Carry out sanitation operations (gutters cleaning, weeding).
- Inform the population about cholera symptoms, importance of ORS use and need for early referral of patients.

### Capacity Building

**Objective: To build the capacities of the provincial Red Cross committee through training and provision of logistics, first aid and protection materials to its local committees.**

#### Activities planned:

- Conduct training/information programmes for Red Cross volunteers and beneficiaries, in particular regional hygiene promotion and the safe use of Water Treatment Products (water chlorination).
- Provide Watsan, teaching, first aid and transportation materials.
- Carry out monitoring and evaluation activities.

## How we work

All International Federation assistance seeks to adhere to the [Code of Conduct for the International Red Cross and Red Crescent Movement and Non-Governmental Organizations \(NGO's\) in Disaster Relief](#) and is committed to the [Humanitarian Charter and Minimum Standards in Disaster Response \(Sphere\)](#) in delivering assistance to the most vulnerable.

The International Federation's activities are aligned with its Global Agenda, which sets out four broad goals to meet the Federation's mission to "improve the lives of vulnerable people by mobilizing the power of humanity".

### Global Agenda Goals:

- Reduce the numbers of deaths, injuries and impact from disasters.
- Reduce the number of deaths, illnesses and impact from diseases and public health emergencies.
- Increase local community, civil society and Red Cross Red Crescent capacity to address the most urgent situations of vulnerability.
- Reduce intolerance, discrimination and social exclusion and promote respect for diversity and human dignity.

## Contact information

For further information specifically related to this operation please contact:

- **In DRC:** Jacques Katshitshi, Secretary General DRC Red Cross Society, email: [sgcrrdc2006@yahoo.fr](mailto:sgcrrdc2006@yahoo.fr), phone: +243 816 513 688
- **In DRC:** Abdoul Azize Diallo, Federation Country Representative, Kinshasa, email: [abdoulazize.diallo@ifrc.org](mailto:abdoulazize.diallo@ifrc.org) phone: +243 818 801 400,
- **In Cameroon:** Javier Medrano, Federation Regional Representative for Central Africa, Yaoundé, email: [javier.medrano@ifrc.org](mailto:javier.medrano@ifrc.org), Phone: (237) 22 21 74 37 OR (237) 96 29 87 89, Fax: (237) 22 21 74 39
- **In Senegal:** Alasan Senghore, Federation Head of West and Central Africa Zone Office, Dakar, Senegal, email: [alasan.senghore@ifrc.org](mailto:alasan.senghore@ifrc.org), Phone: (221) 869 3641, Fax: (221) 22 860 2002
- **In Geneva:** Niels Scott, Federation Operations Coordinator (Africa); email: [niels.scott@ifrc.org](mailto:niels.scott@ifrc.org); telephone +41.22.730.4527; fax + 41.22.733.0395

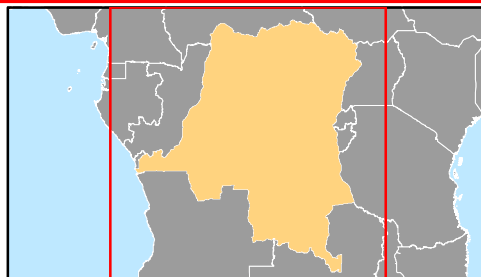
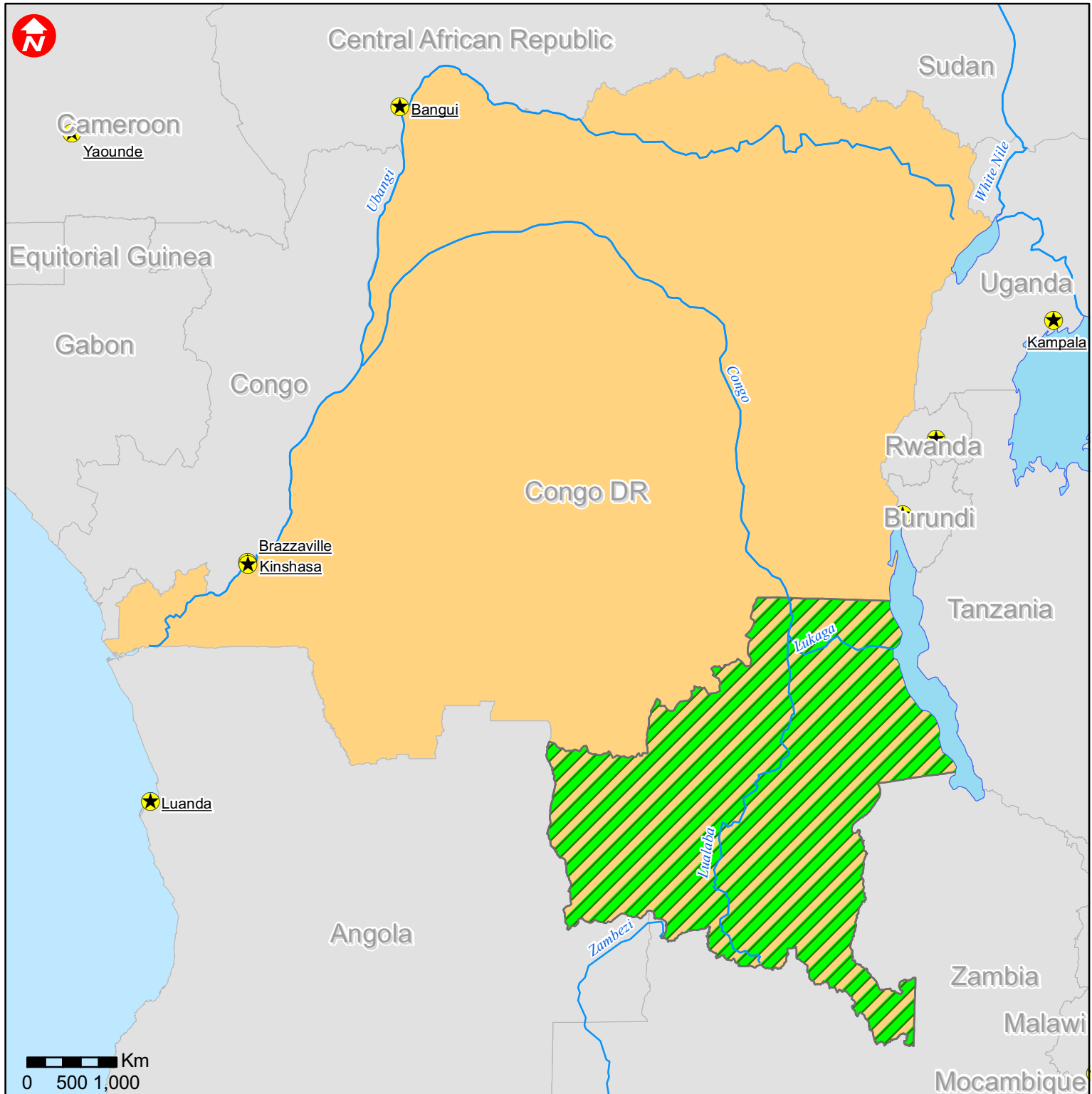
[<DREF budget and map below; click here to return to the title page>](#)

BUDGET SUMMARY	VALUE IN CHF
<b>BENEFICIARIES NEEDS</b>	
Water & Sanitation	13,255
Medical & First Aid	3,000
Teaching materials	9,780
Other supplies & services	2,240
<b>TOTAL BENEFICIARIES NEEDS</b>	<b>28,275</b>
<b>PROGRAMM SUPPORT 6.5%</b>	
Programme Support	5,386
<b>LAND, VEHICLES &amp; EQUIPMENT</b>	
Vehicles	-
<b>TRANSPORT &amp; STORAGE</b>	

Distribution & monitoring	4,500
Transport & vehicles costs	2,000
<b>PERSONNEL</b>	
Delegate - others benefits	450
National & NS Staff	26,833
<b>WORKSHOP &amp; TRAINING</b>	
Workshop & training	5,100
<b>Total General Expenses</b>	
Travel	3,636
Information & public relation	2,452
Office costs	2,000
Communications	1,388
Financial Charges	841
<b>TOTAL OPERATIONAL NEEDS</b>	<b>54,586</b>
<b>TOTAL APPEAL CASH, KIND, SERVICES</b>	<b>82,861</b>



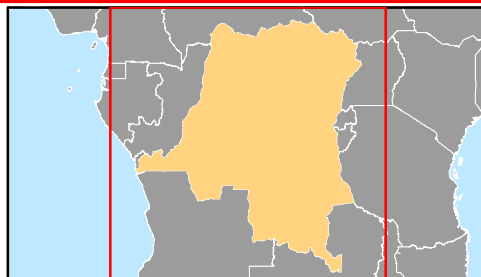
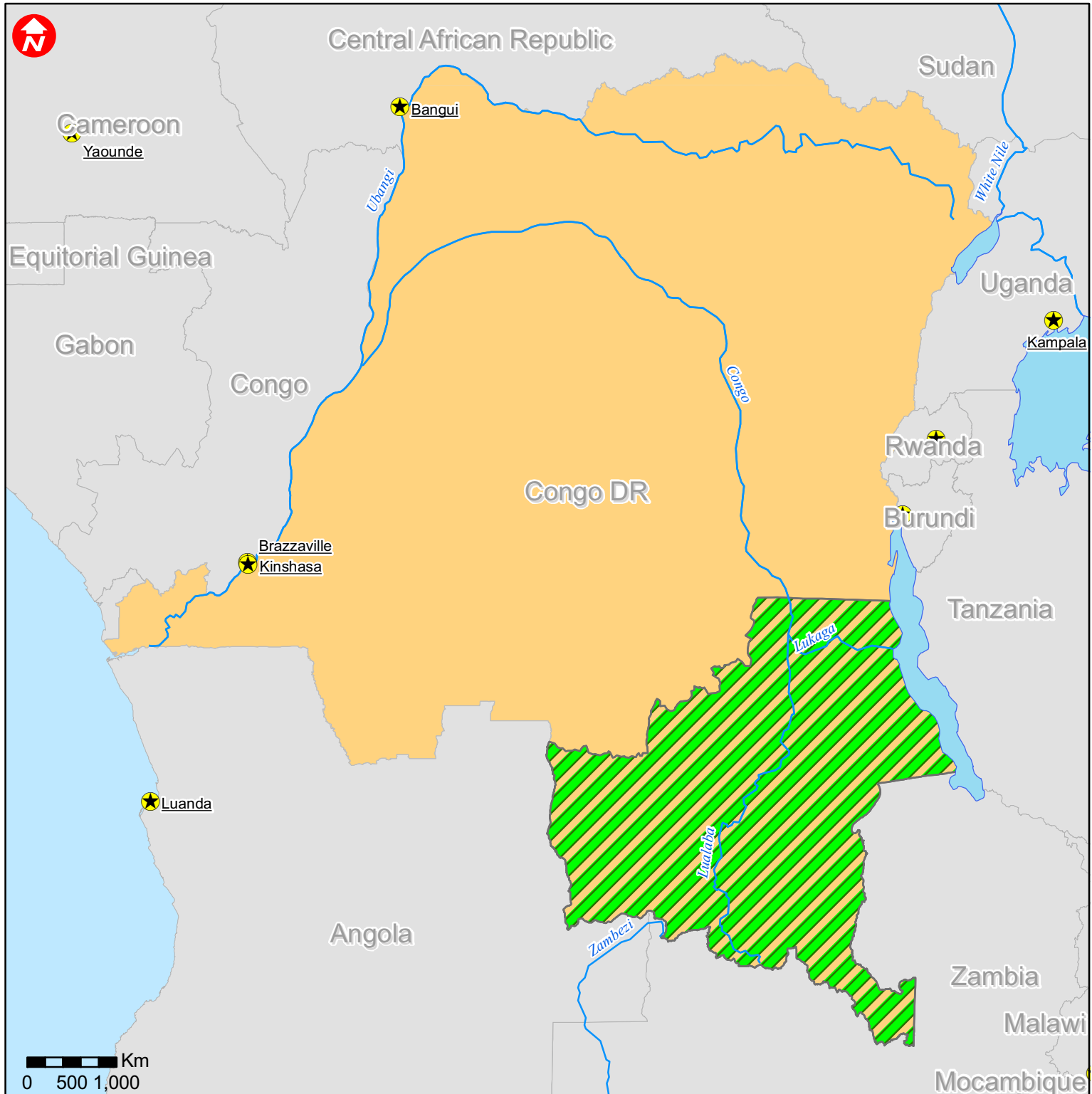
# Democratic Republic of the Congo: Epidemic



 Affected province of Katanga



# Democratic Republic of the Congo: Epidemic



 Affected province of Katanga