

# Operations update



International Federation  
of Red Cross and Red Crescent Societies

## Myanmar: Cyclone Nargis

Emergency appeal n° MDRMM002  
GLIDE n° TC-2008-000057-MMR  
Operations update n° 1  
7 May 2008

**Period covered by this Update:** first 24 hours since appeal was launched

**Appeal target (current):** CHF 6,290,909 (USD 5.9 million or EUR 3.86 million);

[<click here to view the attached Emergency Appeal Budget>](#)

**Appeal coverage:** Confirmed figures are as yet unavailable. However, there has been huge interest from partners, and contributions may soon match the current appeal target. [<click here to link to contact details >](#)

### Appeal history:

- This preliminary emergency appeal was launched on 6 May 2008 for CHF 6,290,909 (USD 5.9 million or EUR 3.86 million) for six months to assist 30,000 families.
- Disaster Relief Emergency Fund (DREF): CHF 200,000 has been allocated from the Federation's DREF.

**Summary:** The International Red Cross and Red Crescent Movement is gearing up its international support to meet needs in Myanmar, as well gradually increasing its action on the ground. Two relief flights will be arriving in-country tomorrow (8 May) and a field assessment and coordination (FACT) team is being prepared for deployment. Planning and coordination is currently based on an expectation of massive needs and good access for significant international support. The current estimate of people affected is at least one million and casualty figures remain very high with a reported 22,000-plus dead and 41,000 missing.

Today saw extensive discussions between the disaster taskforce team at the Federation's Southeast Asia office, regional partner national society representatives based in Bangkok (with good experience of Myanmar) – namely American, Danish, French, and German Red Cross – as well as an International Committee of the Red Cross (ICRC) team from its Southeast Asia regional delegation. Scenario planning is advancing steadily but surely. This was supplemented by an international conference call organized by the Federation secretariat, which saw more than 20 national societies inform the secretariat of resources currently being mobilized and ask pressing questions around the operation and its opportunities and difficulties at this stage.

In Myanmar, the Federation is discussing with Myanmar Red Cross Society (MRCS) how the national society wants to proceed in terms of managing what will certainly be a massive international support operation. This will be designed to ensure that: first, the MRCS and the whole Movement delivers rapid relief assistance to the population in the most effective way; and second, that MRCS is left stronger post-disaster to provide sustainable support to vulnerable people, long after the international assistance. This approach is based on some of the lessons learned during the tsunami operation.

In terms of capacity to manage the burgeoning international response, it is clear that the current Federation 'regular' management structure in place in Bangkok will soon need to be strengthened. Other options are being considered to reinforce the operational capacity of the region.

This preliminary emergency appeal is focused on relief and emergency shelter only. Once a more detailed and comprehensive picture emerges of needs and the response that is logistically possible, a revised appeal will be issued. The initial number of beneficiaries is presently estimated at 30,000 families. This figure is very likely to change once more comprehensive field and needs assessments can be carried out.

At present, humanitarian organizations, national and international communities, governments and other donors are coming forward with offers of aid in cash and kind. More specific information on donor response will be provided in upcoming operations updates.

## The situation

Tropical cyclone Nargis made landfall as a category four cyclone striking vastly populated areas mostly mid-south of Myanmar on 2 May 2008. The scale of destruction and loss is massive with casualty figures still rising. To date, more than 22,000 are reported dead, with 41,000 missing and millions of others affected.

The cyclone struck west-southwest of Yangon city on Friday with winds exceeding 190 km/hr. The storm tore through the delta city with its estimated population of six million for more than ten hours until Saturday noon, 3 May. In its wake, it left widespread destruction of homes and buildings, uprooted trees and flattened vegetation, and destruction of infrastructure such as power and telecommunications lines.

## Red Cross and Red Crescent action

Myanmar Red Cross Society, together with the International Federation, has continued today (Wednesday 7 May) assessments in the affected areas. However, one emerging constraint is the fact that international staff are not able to travel beyond Yangon at the moment. The burden outside of the main city is being borne solely by our colleagues in MRCS. This feat deserves recognition as many staff and volunteers have been directly affected by the disaster.

More information is emerging, of a more consistent quality and on a more regular basis. However, the picture still remains fragmented, particularly from the delta.

There has been a high calibre response to the FACT alert. The Federation secretariat is forwarding a list of recommended candidates to Bangkok, with a terms of reference, for a decision. Similarly an regional disaster response team (RDRT) is being assembled and being brought to Bangkok on standby ready to move as soon as visas are issued.

### Logistics

The International Federation continues working on mobilizing specific relief items urgently needed. Donors are urged to coordinate with the zone office and the regional logistics unit in Kuala Lumpur in this respect.

A chartered AN26 aircraft has been given permission to enter Myanmar from Kuala Lumpur, and will take initial relief supplies of 300 shelter kits into the country tomorrow, 8 May. Also, a commercial airline has confirmed transportation of relief items in the form of 1,000 tarpaulins and 3,750 jerry cans as an in-kind donation from the Japanese Red Cross. Some 300 shelter tool kits and 600 more tarpaulins are

also prepared for delivery into the country. Presently, air freight is one of the few ways that relief goods can reach beneficiaries as the port is not in operation due to heavy damage by the cyclone. Efforts in securing a visa for a logistics delegate to enter the country in order to oversee operations are also presently ongoing. A combined British Red Cross and Swiss Red Cross logistics Emergency Response Unit (ERU) is now being mobilised.

## Coordination and partnerships

In Myanmar, MRCS has made significant effort with the support of the Southeast Asia regional disaster manager, who is in country, to structure coordination and briefing in a way that is not overwhelmed as the operation gathers pace. The current in-country team is working around the clock, making the need for additional support more pressing. It is estimated that total international Movement presence in-country stands at nine, including ICRC. The personnel are performing at a high level but as stated are being increasingly stretched.

Significant resources and effort are still being devoted to coordinating within the Movement as well as with other partners. The atmosphere of coordination is still committed and constructive although there is some frustration over the time it is taking to bring resources into the country. The result of effective coordination in Bangkok is absolutely clear to see with partner (including ICRC) expertise informing Federation thinking and action positively.

The Federation is also active at daily regional level OCHA meetings where the work of the Red Cross in country is acknowledged, appreciated but laced with realistic expectations of the capacity of the national society in such a situation. The International Federation also represented the Movement at a UN OCHA organized meeting of Bangkok-based ambassadors where the work of MRCS was acknowledged and appreciated, the opportunities for expanded support were discussed as also were the significant challenges facing this operation at the moment on many levels.

In Geneva, the Federation secretariat has participated in inter-agency standing committee (IASC) meetings, and has also had coordination meetings with the ICRC.

## Communications – Advocacy and Public Information

The secretariat – principally from Bangkok, Kuala Lumpur and Geneva – has handled an enormous volume of media inquiries. Multiple interviews have been given to media outlets on every continent: from global giants such as BBC World, to more community-based media. It has been an impressive performance that has helped – rightly – profile the tremendous work of MRCS staff and volunteers as well highlight to a global audience issues of vulnerability within Myanmar as well as ways global civil society can help people in Myanmar through the global Federation network of 186 national societies.

## How we work

***All International Federation assistance seeks to adhere to the Code of Conduct for the International Red Cross and Red Crescent Movement and Non-Governmental Organizations (NGOs) in Disaster Relief and is committed to the Humanitarian Charter and Minimum Standards in Disaster Response (Sphere) in delivering assistance to the most vulnerable.***

The International Federation's activities are aligned with its Global Agenda, which sets out four broad goals to meet the Federation's mission to "improve the lives of vulnerable people by mobilizing the power of humanity".

### Global Agenda Goals:

- Reduce the numbers of deaths, injuries and impact from disasters.
- Reduce the number of deaths, illnesses and impact from diseases and public health emergencies.
- Increase local community, civil society and Red Cross Red Crescent capacity to address the most urgent situations of vulnerability.
- Reduce intolerance, discrimination and social exclusion

and promote respect for diversity and human dignity.

## Contact information

### For further information specifically related to this operation please contact:

- Myanmar Red Cross Society, phone: +95 1 383680; fax: +95 1 383675, email: [mrcshs-ec@redcross.org.mm](mailto:mrcshs-ec@redcross.org.mm).
- Federation country office in Myanmar: Bridget Gardner, head of country office, phone: +95 9513 0564; fax: +95 1 682588; email: [ifrcmm01@redcross.org.mm](mailto:ifrcmm01@redcross.org.mm)
- Michael Annear, Asia Pacific disaster management coordinator, phone: +66.81 753 9598, email: [michael.annear@ifrc.org](mailto:michael.annear@ifrc.org) (currently in Myanmar).
- Federation regional office in Bangkok: Alan Bradbury, acting head of regional office, phone: +66 2661 8201, fax: +66.2.661.9322; email: [alan.bradbury@ifrc.org](mailto:alan.bradbury@ifrc.org)
- Federation zone office in Kuala Lumpur:
  - Jagan Chapagain, deputy head of zone office, phone: +6012 2153765, email: [jagan.chapagain@ifrc.org](mailto:jagan.chapagain@ifrc.org)
  - Jyri Rantanen, acting head of disaster management unit, phone: +6012 2206920, email: [jyri.rantanen@finrc.fi](mailto:jyri.rantanen@finrc.fi)
  - Penny Elghady, resource mobilization and PMER coordinator, phone: +603 9207 5775, email: [penny.elghady@ifrc.org](mailto:penny.elghady@ifrc.org)
  - For mobilization of relief items: Jeremy Francis, regional logistics coordinator, phone: +60 12 298 9752, fax: +60 3 2168 8573, email: [jeremy.francis@ifrc.org](mailto:jeremy.francis@ifrc.org)
- Federation secretariat in Geneva: Christine South, operations coordinator Asia Pacific, phone: +41 22 730 4529; mobile: +41 79 308 9824; email: [christine.south@ifrc.org](mailto:christine.south@ifrc.org)

[<click here to return to the title page>](#)

## **PRELIMINARY APPEAL BUDGET SUMMARY**

Myanmar:Tropical Cyclone

MDRMM002

ORIGINAL

### **RELIEF NEEDS**

Shelter	1,800,000
Clothing & Textiles	150,000
Utensils & Tools	1,200,000
Other Supplies & Services	1,200,000
<b>Total Relief Needs</b>	<b>4,350,000</b>

### **CAPITAL EQUIPMENT**

Vehicles Purchase	280,000
Computers & Telecom Equipment	10,000

### **TRANSPORT, STORAGE & VEHICLES**

Storage - Warehouse	50,000
Distribution & Monitoring	100,000
Transport & Vehicles Costs	500,000

### **PERSONNEL**

International Staff	372,000
Regionally Deployed Staff	30,000
National Staff	50,000
National Society Staff	50,000

### **GENERAL EXPENSES**

Travel	30,000
Office /Admin	30,000
Communication Costs	30,000

### **PROGRAMME SUPPORT**

Programme Support - PSR (6.5% of total)	408,909
---	---------

---

<b>Total Operational Needs</b>	<b>1,940,909</b>
--------------------------------	------------------

---

<b>Total Appeal Budget (Cash &amp; Kind)</b>	<b>6,290,909</b>
--	------------------

---

**Less Available Resources**

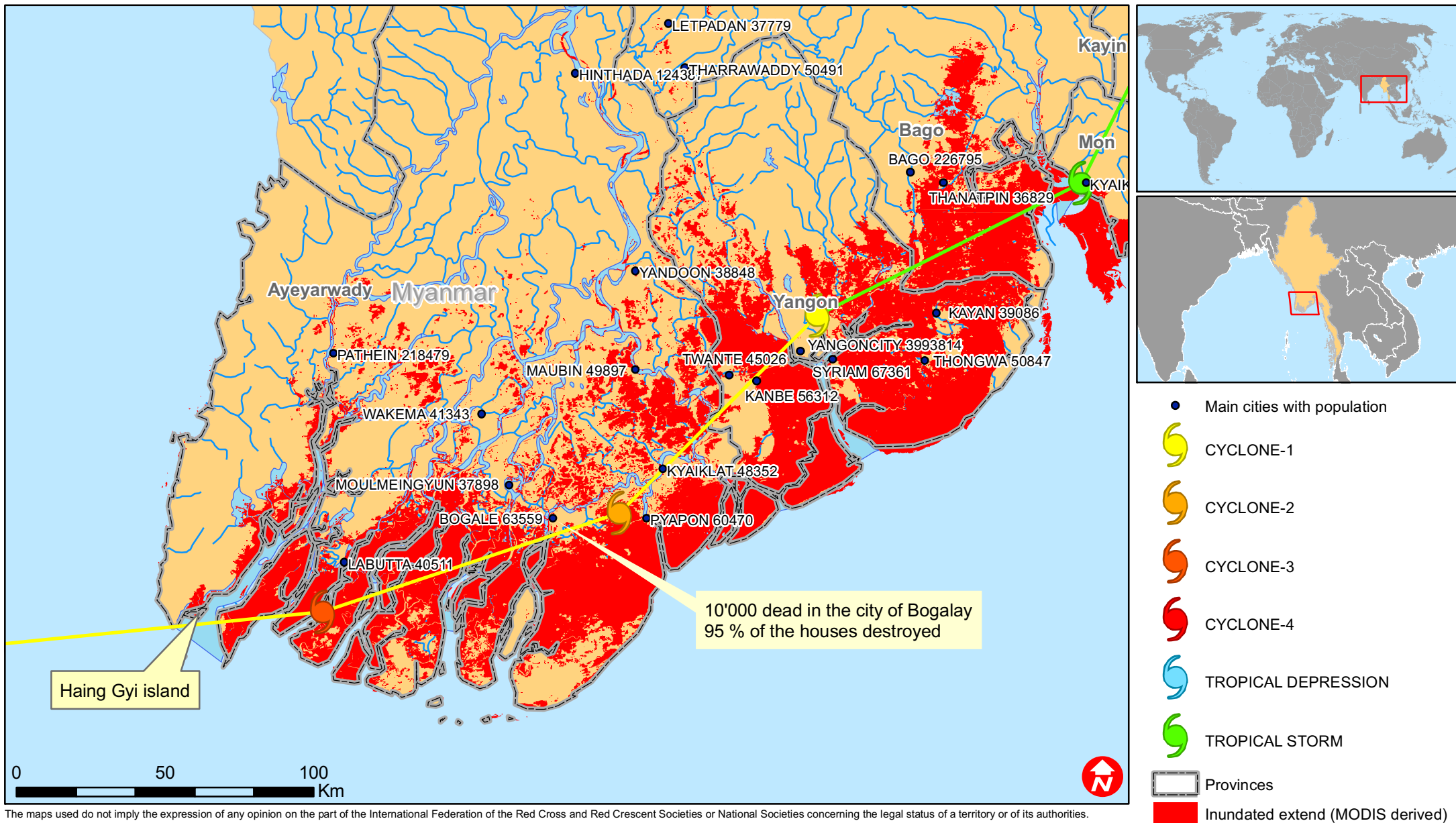
---

<b>Net Request</b>	<b>6,290,909</b>
--------------------	------------------

---



# Myanmar: Tropical cyclone



The maps used do not imply the expression of any opinion on the part of the International Federation of the Red Cross and Red Crescent Societies or National Societies concerning the legal status of a territory or of its authorities.

Map data sources: ESRI, CIESIN, DEVINFO, UNISYS, International Federation, inundation extend are MODIS-derived processed by Dartmouth Flood Observatory - MDRMM002EA.mxd