

Operations update



International Federation
of Red Cross and Red Crescent Societies

Myanmar: Cyclone Nargis

Emergency appeal n° MDRMM002
GLIDE n° TC-2008-000057-MMR
Operations update n° 4
10 May 2008

Period covered by this Update: first 96 hours since appeal was launched

Appeal target (current): CHF 6,290,909 (USD 5.9 million or EUR 3.86 million);

[<click here to view the attached Emergency Appeal Budget>](#)

Appeal coverage: There has been a huge and very generous response from donors to this appeal, and with many confirmed pledges and indications of support, this appeal is already well covered. Initial planning is underway in-country as the International Federation's ability to scale up effectively increases to support Myanmar Red Cross Society and to meet the huge needs, taking into account various operational constraints. A revised appeal will be issued next week; Tuesday at the earliest, as the Myanmar Red Cross Society president and International Federation head of country office will be on an assessment visit of the Ayeyarwady delta.



Picking up the pieces: the force of the storm devastated even relatively sturdy structures in Labutta township in Ayeyarwady (International Federation).

[<Click here to link to the donor response list>](#)

[<click here to link to contact details >](#)

Appeal history:

- This preliminary emergency appeal was launched on 6 May 2008 for CHF 6,290,909 (USD 5.9 million or EUR 3.86 million) for six months to assist 30,000 families.
- Disaster Relief Emergency Fund (DREF): CHF 200,000 has been allocated from the Federation's DREF.

Summary: Aid is getting through in increased amounts. Three Red Cross Red Crescent planes with 14 tonnes of shelter material have arrived. All goods were cleared at customs and then distributed by Myanmar Red Cross Society (MRCS). All stocks in Red Cross warehouses - hygiene items, food, water purification tablets and mosquito nets - have been distributed. It is estimated the overall humanitarian effort thus far has supported 220,000 people; of whom 80,000 have been helped by the Red Cross with provision of shelter kits, shovels, saws, tarpaulins and jerry cans (drinking water containers).

The International Federation is in ongoing, high-level discussions with MRCS and the government emphasizing the depth of the crisis and the need for massive amounts of aid. Such access to this level of discussion is derived from the established relationship that the International Federation has had with the authorities since the delegation was opened in 1993, and which is very important to maintain to ensure the smooth running of this operation.



Misery: tens of thousands of people have been exposed to the elements for more than a week now. As the rainy season gets into full swing, fears over the fate of those who are homeless rise by the day (International Federation).

A further seven flights are expected to arrive between Saturday 10 May and Monday 12 May.

These will contain approximately 20 tonnes of shelter materials, jerry cans and 2,000 mosquito nets. All aid is routed via the International Federation's regional logistics unit in Kuala Lumpur and comes from the Japanese, American, British, Swiss and Finnish Red Cross societies.

MRCS is collecting much aid locally and other supplies are being procured locally. Volunteers are continuously loading and unloading bottled water, clothes and household material at the Red Cross headquarters in Yangon.

International staff are still unable to travel beyond the city limits, however, agreement has been secured for the International Federation head of country office to travel with the MRCS president and two national society disaster specialists to the Ayeyarwady delta tomorrow Sunday (11 May) to the Ayeyarwady townships Labutta, Bogale and Pyapon, the exact locations where MRCS/International Federation are trying to focus the attention of the operation at the moment.

Official government casualty figures have remained unchanged: 22,000-plus dead, 42,000 missing, about 1.5 million affected. Other, higher casualty estimates have been made but have not been substantiated.

Many partner national societies have already made contributions to the appeal: American Red Cross, Australian Red Cross, Austrian Red Cross, Belgian Red Cross/Belgian government, British Red Cross, Canadian Red Cross, Red Cross Society of China - Hong Kong branch and Macau branch, Danish Red Cross/ Danish government, Finnish Red Cross/ Finnish government, French Red Cross,

Hellenic Red Cross, Icelandic Red Cross, Japanese Red Cross, Korean Red Cross, Luxemburg Red Cross/ Luxemburg government, Netherlands Red Cross, New Zealand Red Cross, Norwegian Red Cross/Norwegian government, Qatar Red Crescent, Slovak Red Cross, Spanish Red Cross/Spanish government, Swedish Red Cross/Swedish government, Swiss Red Cross, Taiwan Red Cross Organization, United Arab Emirates Red Crescent and Viet Nam Red Cross Society. Contributions have also been received from ECHO, the Italian and Estonian governments, and Total Oil Company. The International Federation, on behalf of Myanmar Red Cross Society, would like to thank all partners for their very quick and generous response to this appeal.

The situation

The government has estimated that 75 percent of schools in the seven most severely affected townships have collapsed while the remaining 25 percent have lost their roofs.

Given the gravity of the situation including the lack of food and water, some organizations have reported fears for security, and violent behaviour in the most severely afflicted areas.

The US military is planning to send one C-130 plane on Monday, as well as two more on Tuesday, as test flights. These will be carrying emergency relief items. It is not clear what arrangements for distributions have been made.



Washing away the memories: In Yangon at least there are increasing signs of people making the best of the difficult conditions (International Federation).

There are heavy showers forecasted for next week, especially Tuesday through Thursday. This may have implications for access as roads potentially flood and this may hamper relief operations.

The government of Myanmar is on a four days leave, ending Tuesday because of the national referendum in most of the country.

Tropical cyclone Nargis (which means daffodil in Urdu) struck the mid-south of Myanmar on 2 May. The scale of destruction and loss is massive. Official government casualty figures have remained unchanged: 22,000-plus dead, 41,000 missing, and about 1.5 million affected. Other, higher casualty estimates have been made, but have not been substantiated. The consequent storm surge (reportedly 3.5 metres in many areas and occasionally seven metres in some parts - important to note that this is different to a tsunami) caused the most loss of life rather than the cyclone per se. On flat land this phenomenon can be – and has been – devastating. While technology allows cyclones to be ‘seen’ in terms of wind speed and rain potential, storm surges are much more difficult to predict.

Red Cross Red Crescent action

Operation overview

The main needs are for safe drinking water, emergency shelter, hygiene items and food. The threat of health problems and communicable diseases looms greatly over the affected communities.



Emergency first aid: the expertise of MRCS volunteers in first aid is proving its worth countless times over (International Federation).

The in-country team has started to prioritize areas based on impact maps and the limited information available. This will assist in trying to develop longer-term distribution plans as well as contribute towards the revision of this appeal.

The field assessment coordination team (FACT) health delegate (a Japanese Red Cross representative) has arrived, and a water and sanitation emergency response unit (ERU) is due to arrive tonight (10 May). ICRC has a flight with water and sanitation equipment and two delegates arriving tonight (10 May).

Today, (10 May) MRCS/International Federation sent to the Ayeyarwady townships of Mau Bin and Myanamyia, the following items:

- 300 shelter kits, 300 cooking sets, 600 jerry cans
- 6,000 water purification tablets

- clothing for 1,500 people
- hygiene items for 1,500 people
- 1,500 mosquito nets

Within Yangon, (Kawhmu and Kyeemyinding townships), the following was distributed:

- 400 cooking sets
- 600 jerry cans
- 4,000 water purification tablets
- hygiene items for 2,000 people
- 2,000 mosquito nets

Progress has been made with identifying further distribution routes by boat from Yangon. The regional logistics unit in Kuala Lumpur is leading planning on logistics, which is already emerging as one of the keys to this evolving operation, more so than in even other complex humanitarian disasters.

Coordination and partnerships

Meetings were held with the UNDAC team to gain an overview of the situation, as well as UNHCR on the Emergency Shelter Cluster. Similarly in Bangkok, the International Federation was represented at the logistics cluster meeting as well as the IASC daily brief.

Similar inter-agency meetings were also attended in Geneva and New York, to ensure good coordination and information sharing at all levels.

Capacity of the national society

Any arrival of substantial numbers of delegates and partner national societies threatens to overwhelm the national society and the possibility for other priority personnel and goods to get in. A strict timetable has been drawn up in country on who – in terms of technical expertise – needs to come in first etc. The aim of this is to ensure that the operation scales up both in quantity and quality, in the most effective way, with the limited resources we are able to get in-country.

Capacity of the International Federation

An 18-strong field assessment and coordination team (FACT) has been mobilised. A core advance team is in Myanmar the remainder are arriving at the International Federation's Southeast Asia regional office in Bangkok, and will subsequently be deployed to Myanmar. The bulk of the team was briefed extensively by the regional office today. The FACT will support the Myanmar Red Cross and the International Federation country office in assessing, planning and cooperating with other humanitarian agencies on the ground. This team will



Community heroes: MRCS volunteers continue to venture out on various damage and needs assessment as the Red Cross response gathers some momentum (International Federation).

also review existing assessment information, recommendations and actions, and work with the government and other humanitarian agencies, to identify gaps or needs that need to be addressed. The team will also formulate a plan of action in order to keep overall relief efforts moving in a coordinated and effective manner. The first regional disaster response team (RDRT) members (from Malaysian Red Crescent Society) have arrived. The other members (from Indonesian Red Cross and Philippines Red Cross) were today briefed in Bangkok.

International logistics

- The logistics ERU of British and Swiss Red Cross members have arrived in Bangkok.
- Three chartered Antonov 12 rotations have been confirmed for next week.
- A commercial flight departs from Kuala Lumpur tonight (10 May) with 8 MT of jerry cans and mosquito nets. Space on commercial flights have been confirmed for Sunday and every day next week. Between 3 to 11 MT of jerry cans, mosquito nets, tarpaulins will be shipped each day.
- The regional logistics unit in Dubai and the Bangladesh country office are working hard to find air charters for their stock.
- Framework suppliers for major relief items are on alert and exploring possibilities for air charters.

Communications – Advocacy and Public Information

There has been huge international and national media interest in Red Cross operations and perspectives. International Federation communication teams in Bangkok, Kuala Lumpur and Geneva have worked closely with those of national societies to produce phenomenal media coverage. The access provided to the head of country office and zone disaster management coordinator in Myanmar and the press conferences they have given, have produced tremendous impact, and have been particularly rewarding in terms of portraying the realities on the ground and the efforts of the Red Cross to address the huge humanitarian needs. Working as a Federation in communications is essential if all our national societies are to be served ultimately.

How we work

All International Federation assistance seeks to adhere to the Code of Conduct for the International Red Cross and Red Crescent Movement and Non-Governmental Organizations (NGOs) in Disaster Relief and is committed to the Humanitarian Charter and Minimum Standards in Disaster Response (Sphere) in delivering assistance to the most vulnerable.

The International Federation's activities are aligned with its Global Agenda, which sets out four broad goals to meet the Federation's mission to "improve the lives of vulnerable people by mobilizing the power of humanity".

Global Agenda Goals:

- Reduce the numbers of deaths, injuries and impact from disasters.
- Reduce the number of deaths, illnesses and impact from diseases and public health emergencies.
- Increase local community, civil society and Red Cross Red Crescent capacity to address the most urgent situations of vulnerability.
- Reduce intolerance, discrimination and social exclusion and promote respect for diversity and human dignity.

Contact information

- Federation regional office in Bangkok: Alan Bradbury, acting head of regional office, phone: +66 2661 8201, fax: +66.2.661.9322; email: alan.bradbury@ifrc.org
- Federation zone office in Kuala Lumpur:
 - Jagan Chapagain, deputy head of zone office, phone: +6012 2153765, email: jagan.chapagain@ifrc.org
 - Jyri Rantanen, acting head of disaster management unit, phone: +6012 2206920, email: jyri.rantanen@finrc.fi

- For pledges of funding: Penny Elghady, resource mobilization and PMER coordinator, phone: +603 9207 5775, email: penny.elghady@ifrc.org
- For mobilization of relief items: Jeremy Francis, regional logistics coordinator, phone: +60 12 298 9752, fax: +60 3 2168 8573, email: jeremy.francis@ifrc.org
- Federation secretariat in Geneva: Christine South, operations coordinator Asia Pacific, phone: +41 22 730 4529; mobile: +41 79 308 9824; email: christine.south@ifrc.org

[<click here to return to the title page>](#)

PRELIMINARY APPEAL BUDGET SUMMARY

Myanmar:Tropical Cyclone

MDRMM002

ORIGINAL

RELIEF NEEDS

Shelter	1,800,000
Clothing & Textiles	150,000
Utensils & Tools	1,200,000
Other Supplies & Services	1,200,000

Total Relief Needs **4,350,000**

CAPITAL EQUIPMENT

Vehicles Purchase	280,000
Computers & Telecom Equipment	10,000

TRANSPORT, STORAGE & VEHICLES

Storage - Warehouse	50,000
Distribution & Monitoring	100,000
Transport & Vehicles Costs	500,000

PERSONNEL

International Staff	372,000
Regionally Deployed Staff	30,000
National Staff	50,000
National Society Staff	50,000

GENERAL EXPENSES

Travel	30,000
Office /Admin	30,000
Communication Costs	30,000

PROGRAMME SUPPORT

Programme Support - PSR (6.5% of total)	408,909
---	---------

Total Operational Needs **1,940,909**

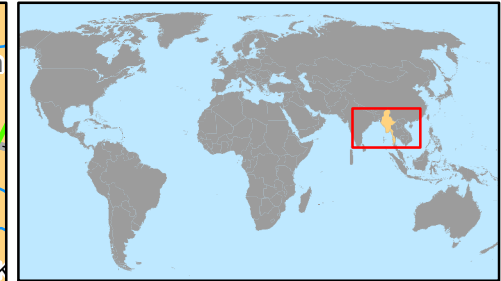
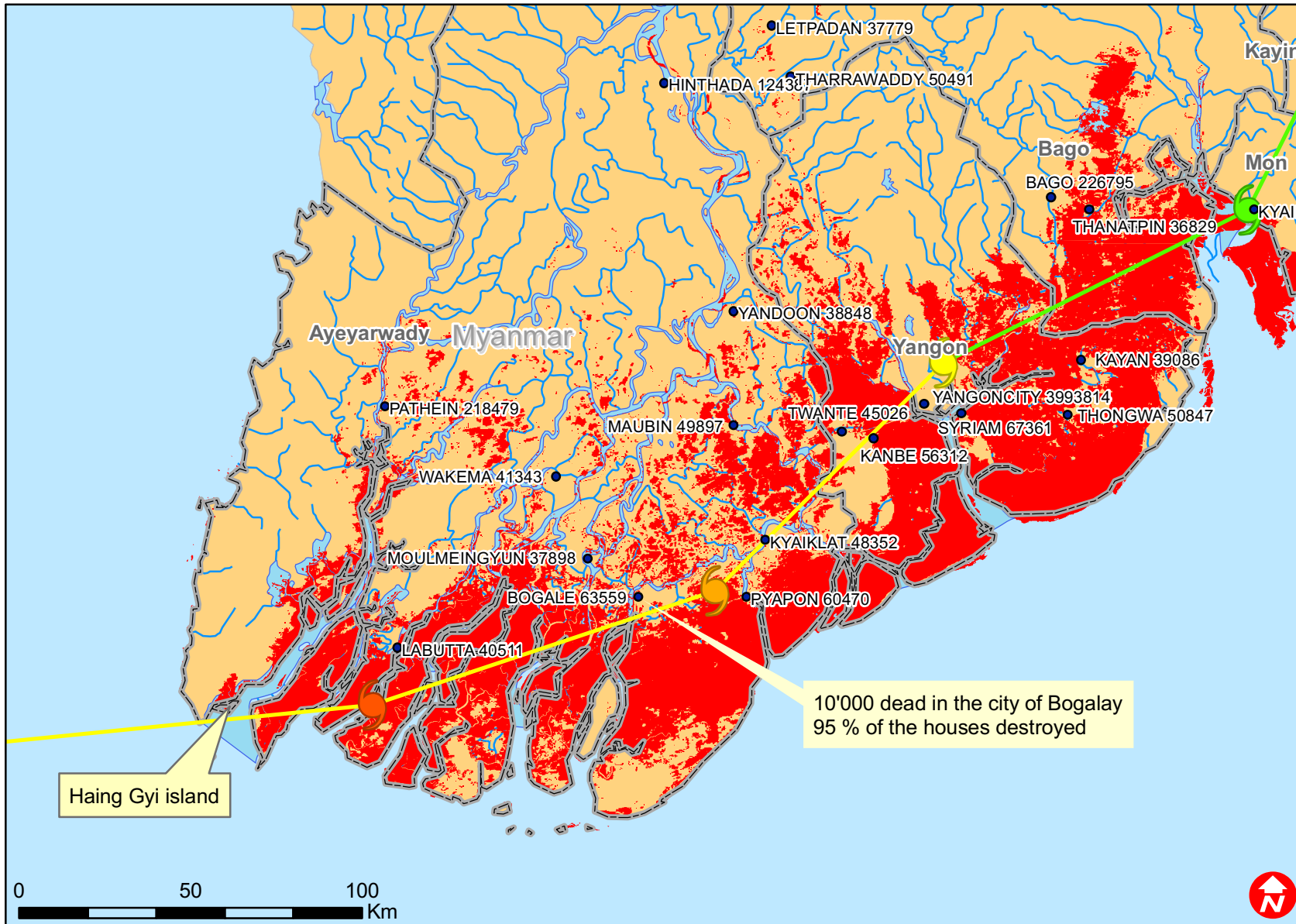
Total Appeal Budget (Cash & Kind) **6,290,909**

Less Available Resources

Net Request **6,290,909**



Myanmar: Tropical cyclone



- Main cities with population
- ☄ CYCLONE-1
- ☄ CYCLONE-2
- ☄ CYCLONE-3
- ☄ CYCLONE-4
- ☄ TROPICAL DEPRESSION
- ☄ TROPICAL STORM
- ▭ Provinces
- Inundated extend (MODIS derived)