

Operations update



International Federation
of Red Cross and Red Crescent Societies

Myanmar: Cyclone Nargis

Emergency appeal n° MDRMM002
GLIDE n° TC-2008-000057-MMR
Operations update n° 9
19 May 2008

Period covered by this Update: Three days since revised emergency appeal launched
Revised Emergency Appeal launched 16 May 2008: CHF 52,857,809 (USD 50.8 million or EUR 32.7 million) to assist 100,000 families for three years;

Appeal coverage: There continues to be a huge and generous response to this appeal. With confirmed pledges and pledges in the pipeline, the revised emergency appeal is now 58 per cent covered. [<click here to view the attached Emergency Appeal Budget>](#)

The revised plan of action covers the provision of life-saving assistance and short-term relief (for up to six months) as well as medium and longer term recovery needs. It aims to support a significant scaling up in the humanitarian response of Myanmar Red Cross Society (MRCS) as well as the wider Red Cross Red Crescent Movement. The appeal seeks to do this in a way that: is sensitive to the national society's capacity; builds on MRCS' long term strengths; and takes account of the operational challenges that exist. In light of all this, partners are requested to continue their excellent support and understanding to the Cyclone Nargis appeal.

[<Click here to link to the donor response list>](#) [<click here to link to contact details >](#)



A father makes sure his son keeps strong; numerous families are preparing to spend their 18th night without a home, many without safe drinking water or food.

Appeal history:

- 16 May 2008: A revised emergency appeal launched for CHF 52,857,809 (USD 50.8 million or EUR 32.7 million) to assist 100,000 families for three years
- 6 May 2008: A preliminary emergency appeal launched for CHF 6,290,909 (USD 5.9 million or EUR 3.86 million) to assist 30,000 families for six months.
- 5 May 2008: CHF200,000 allocation from the International Federation's Disaster Relief Emergency Fund (DREF).

Summary: Access beyond Yangon remains difficult. Distributions are going through the MRCS/ International Federation pipeline in-country but this requires further strengthening. Reports indicate that in most of the bigger affected townships, basic relief and food is available but much less so in the more remote areas.

Feedback from some of the many temporary camps is mixed: while significant relief is getting through, there are indications of mounting frustration among many displaced communities. New handling procedures at Yangon airport do not seem to be greatly affecting the release of Red Cross Red Crescent goods to MRCS warehouses shortly after their arrival and onto various locations within the delta.

Heavy rainfall was again reported in the Ayeyarwady delta today (19 May). This eases the water situation in that people are able to catch rainwater with plastic sheeting. However, the rain for many others simply adds to the misery as they look forward to their 18th night in often wretched conditions. In addition, access to already relatively inaccessible locations is set to remain very difficult.

Many partner national societies have already made contributions to the appeal: American Red Cross/American government, Australian Red Cross, Austrian Red Cross, Belgian Red Cross/Belgian government, British Red Cross, Canadian Red Cross, Red Cross Society of China - Hong Kong branch and Macau branch, Danish Red Cross/Danish government, Finnish Red Cross/ Finnish government, French Red Cross, Hellenic Red Cross, Icelandic Red Cross, Japanese Red Cross, Korean Red Cross, Luxembourg Red Cross/Luxembourg government, Monaco Red Cross, Netherlands Red Cross, New Zealand Red Cross, Norwegian Red Cross/Norwegian government, Portuguese Red Cross, Qatar Red Crescent, Singapore Red Cross, Slovak Red Cross, Spanish Red Cross/Spanish government, Swedish Red Cross/Swedish government, Swiss Red Cross, Taiwan Red Cross Organization, United Arab Emirates Red Crescent and Vietnam Red Cross Society. Contributions have also been received from ECHO, the Italian and Estonian governments and Total Oil Company. The International Federation, on behalf of Myanmar Red Cross Society, would like to thank all partners for their very quick and generous response to this appeal.

The situation

Tropical cyclone Nargis (which means daffodil in Urdu) struck the mid-south of Myanmar on 2 May. The scale of destruction and loss is massive with official figures listing 78,000 people dead and 56,000 missing. The UN estimates that 2.4 million people are affected. A consequent storm surge, reportedly 3.5 metres in many areas, caused the most loss of life rather than the cyclone per se.

Red Cross Red Crescent action

Operation overview

The overall goal is to improve the lives and restore livelihoods and basic living conditions of communities affected by Cyclone Nargis.

The operation seeks to:

- Provide relief to meet the basic needs in a timely manner to those most affected;

- Provide recovery support to strengthen the resilience of the most vulnerable people among those affected; and
- Strengthen MRCS human resource capacity and overall operational effectiveness in the short, medium and long term (via an 'organizational development in emergencies' framework).

The plan of action focuses on the following needs: relief, community-based health and first aid, psychosocial support, emergency shelter, water sanitation and hygiene promotion, and food security and livelihoods. The operation is intended to be: needs based; integrated and holistic; recovery based; community based; and implemented in coordination and giving priority to areas not served by others. Lessons learnt from recent operations, including the 2004 tsunami, such as volunteering in emergencies, have been acknowledged and the plan draws on these.

The operation is in three phases:

- **Phase 1:** Acute and short term; up to six months: Focus on survival needs, epidemic prevention and control and scaling up to meet needs for a larger target population while laying groundwork for early recovery
- **Phase 2:** Medium term; six to 12 months: Focus on enhancing operational efficiency and effectiveness for MRCS public services, volunteer base, and management/branch structures
- **Phase 3:** Longer term 12-36 months: Focus on development and expansion of community-based programmes; MRCS capacity building; and ongoing assessment to identify and support affected households not recovering as well as expected

Operation update

Goods are moving into the country and out to distribution locations despite challenges such as warehouse capacity problems and changes to procedures at the airport. Momentum has built with seven Red Cross Red Crescent consignments being cleared quickly from Yangon airport and then reliably trucked to townships in the Yangon and Ayeyarwady divisions.

Distributions are increasing but still need to scale up to cover needs. Relief teams are trying to put together a three-day distribution plan; however, there are many challenges in accomplishing this due to the ever-changing operation environment. The latest arrival of emergency shelter items have been



Not much to go around: a woman prepares a basic meal while hungry family members look on.

added to the current three-day distribution plan. Altogether, six warehouses (four old and two new) are now included in the operation.

The over-stretched internet connection and limited international phone lines are proving a challenge to communication. As such, critical information is often received too late (e.g. change of plane arrival times) and can have a negative effect on the operation.

MRCS assessment teams have been requested to report to national society headquarters more regularly. Assessment missions stay seven days in the field; currently, there are five at work:

- Team 1: Bogale, Kyaiklat, and Pyapon;
- Team 2: Pathein, Ngapudaw, Heingyi Kyin and Labutta;
- Team 3: Mawlamyinegyun
- Team 4: Myaungmya and Maubin
- Team 5: Kyaunggon and Dedaye.

A doctor has been attached to four of the five teams to get more information on health related issues. In addition, MRCS has mobilized a five-member water and sanitation assessment team to establish the best location for a water plant. In Yangon, 100 volunteers each day are assisting in the movement of goods, i.e. between the airport and warehouses.



New and old: MRCS has absorbed significant numbers of new volunteers who are working alongside others who have proudly represented the Red Cross for years.

Health

Health continues to be a primary area of need. The Australian Red Cross has deployed a delegate to support the existing team. The Thai ministry of public health is deploying a medical team called 'The Medical Team of Thailand', comprising 30 people. The Thai Red Cross are cooperating with the government in preparation of this mission.

More information on the status of health services has come to light. Five out of 20 township hospitals in Yangon division are severely damaged but still functional. Each township hospital serves as a

referral to four or five health centres. The damage to these health centres is as yet unconfirmed but as their structure is similar to that of normal houses, the expectation is that many are damaged or destroyed. Similar information from the Ayeyarwady division is not yet available.

Water and sanitation

Water and sanitation activities are moving ahead: German and Austrian emergency response unit (ERU) equipment has arrived as has the French emergency response unit team. Ten local professionals and MRCS volunteers have been identified for water and sanitation training; indeed training of personnel on ICRC purification equipment has begun. The possibility of securing the support of a British Red Cross specialist training team is being explored.

Shelter

The field assessment and coordination team, together with the regional disaster response team (FACT/RDRT) has developed a shelter strategy, which builds upon an initial provision and distribution of 40,000 shelter kits, and shelter support to 60,000 families. The procurement of 40,000 shelter kits will be done immediately while the procurement of materials for shelter support will be done at a later date, at a local level. Given the current shortage of shelter kits, there will be an immediate dispatch of plastic sheeting as a temporary measure, until the shelter kits can be assembled and distributed.

MRCS

MRCS, with the support of the International Federation and ICRC, is elaborating a volunteer management system for the operation. This system is based on experiences from the 2004 tsunami; it will look into rotation plans and different types of volunteers and remuneration systems at headquarters and township levels.

MRCS executive committee members, managers, staff and volunteers have been working non-stop for more than two weeks now. Deep fatigue is being felt; plans are underway to give everybody at least some rest for a day and a half within the next week.

Many organizations are still approaching MRCS at headquarters and field levels to assist in implementing their actions; this continues to place pressure on the MRCS but the national society is still focused on the overall Red Cross Red Crescent Movement operation as a priority.

Partner national societies

- The five-member French Red Cross water and sanitation emergency response unit team has arrived and has been briefed by the head of country office and acting field assessment and coordination team (FACT) leader. They will focus on setting up the equipment and training MRCS staff and local engineers.
- The Danish Red Cross country delegate, assigned to the FACT team, is compiling distribution data and attending cluster meetings, such as food and nutrition, early recovery and agriculture and education.
- Malaysian Red Crescent delegates are well integrated in the team and providing excellent support in logistics at the airport and warehouses.
- Two Japanese Red Cross delegates have been integrated; one into the relief unit and another into the logistics unit
- A plane load of relief from Qatar Red Crescent was due to land today accompanied by a top official from the Qatar national society.

The Federation

The vice-president of the International Federation and president of the Japanese Red Cross has returned from his visit to MRCS and the International Federation in-country team. He also held discussions with the ministries of health and social welfare.

He commented: 'I was so impressed to see volunteers from the MRCS working tirelessly to help people in need. They all have the true Red Cross spirit in their heart and it makes me so proud. This spirit of humanity is possible because of the effective activities that MRCS had in place even before the cyclone. People know that the Red Cross is there to save people, and also that the Red Cross is the place to get involved and volunteer in times of natural disasters and emergencies. The Federation is committed to continue to support the MRCS overcome this tragedy.'



The International Federation vice-president speaks with a volunteer of the MRCS, one of the many who have shown dedicated and wholehearted service despite being personally affected by the cyclone.

The vice-president met several new MRCS volunteers during his visit, including one volunteer, involved in the operation for four days, who said, 'I am still worried about many of my friends

living in the affected area. I am eager to work here and want to contribute to help our people'.

He also met a second volunteer, who has been working at MRCS national headquarters for eight days: 'My home village was nearly totally destroyed. I lost my relatives. I feel very sad, but I am here to help in any way. Carrying relief items to trucks is hard work, but I am proud of my activities here.'

Coordination, representation and media

- Field assessment coordination team (FACT) and regional disaster response team (RDRT) members are participating in important cluster meetings (health, water and sanitation, shelter, food and nutrition, and logistics) in both Yangon and Bangkok.
- A Netherlands Red Cross expert has arrived in Yangon to lead International Federation efforts in assuming the coordination of the shelter cluster. Meanwhile, International Federation staff who are externally supporting the operational structure, continue to lead and coordinate the shelter cluster at the regional level.
- A press conference in Bangkok, featuring an International Federation delegate who was in Yangon for a week, brought together 40 representatives from the international media.

How we work

All International Federation assistance seeks to adhere to the Code of Conduct for the International Red Cross and Red Crescent Movement and Non-Governmental Organizations (NGOs) in Disaster Relief and is committed to the Humanitarian Charter and Minimum Standards in Disaster Response (Sphere) in delivering assistance to the most vulnerable.

The International Federation's activities are aligned with its Global Agenda, which sets out four broad goals to meet the Federation's mission to "improve the lives of vulnerable people by mobilizing the power of humanity".

Global Agenda Goals:

- Reduce the numbers of deaths, injuries and impact from disasters.
- Reduce the number of deaths, illnesses and impact from diseases and public health emergencies.
- Increase local community, civil society and Red Cross Red Crescent capacity to address the most urgent situations of vulnerability.
- Reduce intolerance, discrimination and social exclusion and promote respect for diversity and human dignity.

Contact information

- Federation regional office in Bangkok: Alan Bradbury, acting head of regional office, phone: +66 2661 8201, fax: +66.2.661.9322; email: alan.bradbury@ifrc.org
- Federation zone office in Kuala Lumpur:
 - Jagan Chapagain, deputy head of zone office, phone: +6012 2153765, email: jagan.chapagain@ifrc.org
 - Amy Gaver, acting head of disaster management unit, phone: +6012 2201174, email: amy.gaver@ifrc.org
 - Penny Elghady, resource mobilization and PMER coordinator, phone: +603 9207 5775, email: penny.elghady@ifrc.org
 - For mobilization of relief items: Jeremy Francis, regional logistics coordinator, phone: +60 12 298 9752, fax: +60 3 2168 8573, email: jeremy.francis@ifrc.org
 - For media/communications: John Sparrow, spokesman in Bangkok, phone: +66 847 572 442, email: john.sparrow@ifrc.org
- Federation secretariat in Geneva: Christine South, operations coordinator Asia Pacific, phone: +41 22 730 4529; mobile: +41 79 308 9824; email: christine.south@ifrc.org

[<click here to return to the title page>](#)

REVISED APPEAL BUDGET SUMMARY

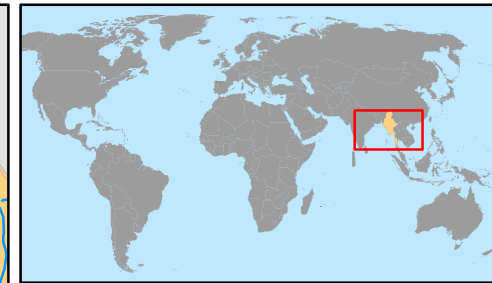
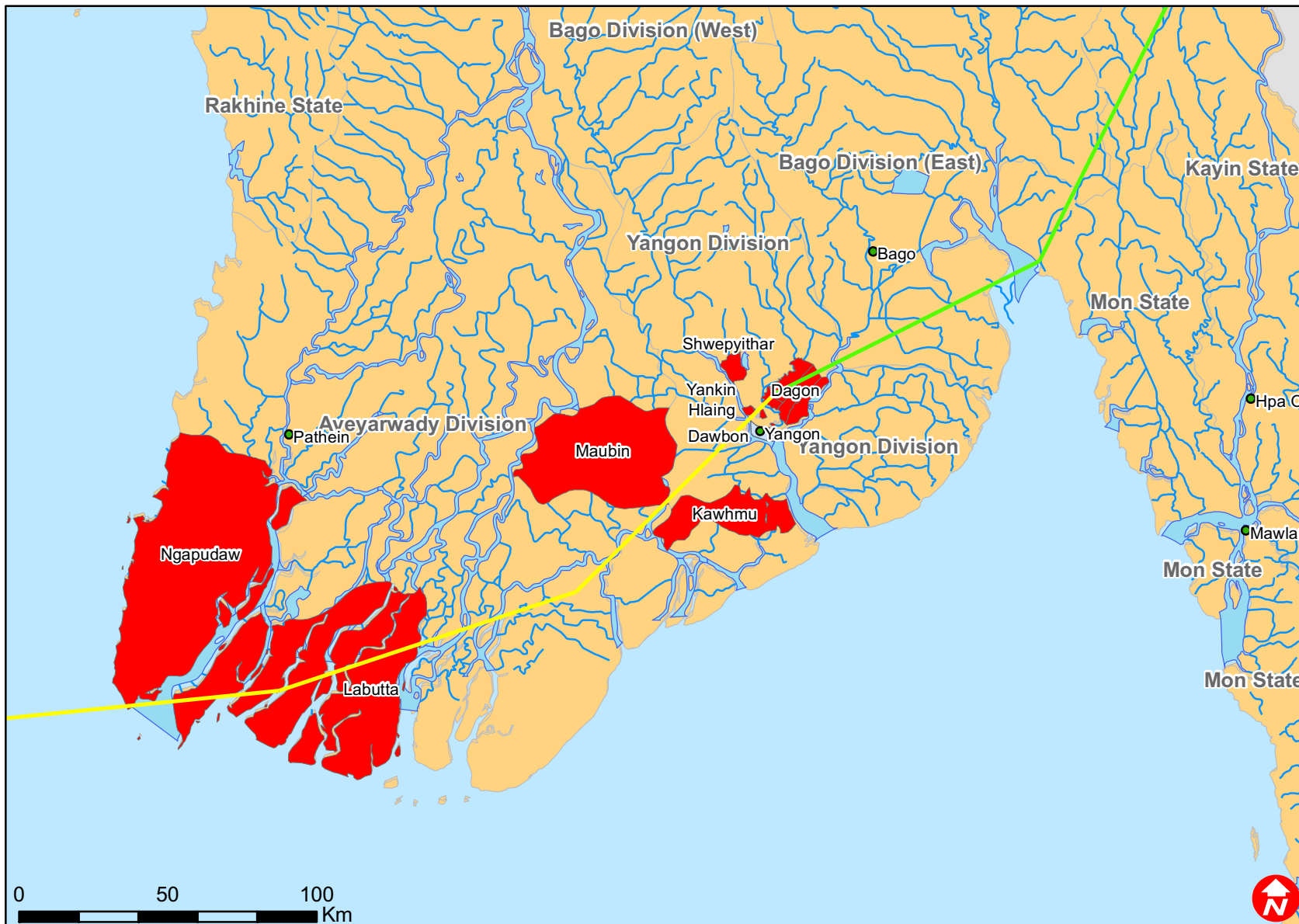
Myanmar:Cyclone Nargis

MDRMM002

| | ORIGINAL | REVISED | VARIANCE |
|---|------------------|-------------------|--------------------|
| <u>RELIEF NEEDS</u> | | | |
| Shelter | 1,800,000 | 12,144,000 | -10,344,000 |
| Clothing & Textiles | 150,000 | 2,832,000 | -2,682,000 |
| Food | 0 | 3,000,000 | -3,000,000 |
| Water & Sanitation | 0 | 5,500,000 | -5,500,000 |
| Medical & First Aid | 0 | 2,345,457 | -2,345,457 |
| Utensils & Tools | 1,200,000 | 2,696,800 | -1,496,800 |
| Other Supplies & Services | 1,200,000 | 2,935,529 | -1,735,529 |
| Total Relief Needs | 4,350,000 | 31,453,786 | -27,103,786 |
| <u>CAPITAL EQUIPMENT</u> | | | |
| Vehicles Purchase | 280,000 | 500,000 | -220,000 |
| Computers & Telecom Equipment | 10,000 | 458,325 | -448,325 |
| Office/Household Furniture & Equip. | 0 | 65,000 | -65,000 |
| <u>TRANSPORT, STORAGE & VEHICLES</u> | | | |
| Storage - Warehouse | 50,000 | 300,000 | -250,000 |
| Distribution & Monitoring | 100,000 | 1,010,000 | -910,000 |
| Transport & Vehicles Costs | 500,000 | 5,036,000 | -4,536,000 |
| <u>PERSONNEL</u> | | | |
| International Staff | 372,000 | 4,650,000 | -4,278,000 |
| Regionally Deployed Staff | 30,000 | 90,000 | -60,000 |
| National Staff | 50,000 | 1,176,900 | -1,126,900 |
| National Society Staff | 50,000 | 3,105,600 | -3,055,600 |
| Consultants | 0 | 102,000 | -102,000 |
| <u>WORKSHOPS & TRAINING</u> | | | |
| Workshops & Training | 0 | 84,000 | -84,000 |
| <u>GENERAL EXPENSES</u> | | | |
| Travel | 30,000 | 622,240 | -592,240 |
| Information & Public Relations | 0 | 8,500 | -8,500 |
| Office running costs | 30,000 | 559,000 | -529,000 |
| Communication Costs | 30,000 | 185,700 | -155,700 |
| Other General Expenses | 0 | 15,000 | -15,000 |
| <u>PROGRAMME SUPPORT</u> | | | |
| Programme Support - PSR (6.5% of total) | 408,909 | 3,435,758 | -3,026,848 |
| Total Operational Needs | 1,940,909 | 21,404,023 | -19,463,113 |
| Total Appeal Budget (Cash & Kind) | 6,290,909 | 52,857,809 | -46,566,899 |
| Less Available Resources | | 17,600,348 | |
| Net Request | 6,290,909 | 35,257,461 | |



Myanmar: Tropical cyclone



- Most affected
- Provinces