

# Operations update



International Federation  
of Red Cross and Red Crescent Societies

## Myanmar: Cyclone Nargis

Emergency appeal n° MDRMM002  
GLIDE n° [TC-2008-000057-MMR](#)  
Operations update n° 10  
22 May 2008

**Period covered by this Update:** six days since revised emergency appeal launched

**Revised Emergency Appeal launched 16 May 2008:** CHF 52,857,809 (USD 50.8 million or EUR 32.7 million) to assist 100,000 families for three years;

[<click here to view the attached Emergency Appeal Budget>](#)

The revised plan of action covers the provision of life-saving assistance and short-term relief (for up to six months) as well as medium and longer term recovery needs. It aims to support a significant scaling up in the humanitarian response of Myanmar Red Cross Society (MRCS) as well as the wider Red Cross Red Crescent Movement. The appeal seeks to do this in a way that: is sensitive to the national society's capacity; builds on MRCS's long term strengths; and takes account of the operational challenges that exist. In light of all this, partners are requested to continue their excellent support and understanding to the Cyclone Nargis appeal.

[<Click here to link to the donor response list>](#) [<click here to link to contact details >](#)



Volunteers from the Myanmar Red Cross Society load relief items onto a truck bound for the delta region.  
(International Federation)

**Appeal history:**

- 16 May 2008: A revised emergency appeal launched for CHF 52,857,809 (USD 50.8 million or EUR 32.7 million) to assist 100,000 families for three years
- 6 May 2008: A preliminary emergency appeal launched for CHF 6,290,909 (USD 5.9 million or EUR 3.86 million) for six months to assist 30,000 families.
- 5 May 2008: CHF200,000 allocation from Federation's Disaster Relief Emergency Fund (DREF).

**Summary:**

An experienced Myanmar Red Cross Society (MRCS) volunteer trained in regional disaster response has returned from a five-day assessment of the delta. "There are many villages in Bogale, which we are still trying to reach," he said. "I was able to reach about 20 villages by boat; in one we visited, there were over 15,000 people before the cyclone, but only about 2,600 have survived. According to the survivors, the storm surge took people up to 11 kilometres away from the village. It was astonishing."

"It was very clear that clean water, food and shelter remain a priority for the people. I am worried about the children and vulnerable people. Where there are no health centres or doctors, I saw Red Cross volunteers working so hard. They are providing first aid but they are also getting tired."

Heavy rain continues to hamper distributions; however, the three-day rolling distribution plan is holding up. A shift from air to sea freight is in hand, with a complete switch due in early June. One or two barges may be hired to take relief from Yangon to Bogale (one to one-and-a-half days), Labutta (three to four days), and Ngapudaw (four-plus days).

Many partner national societies have already made contributions to the appeal: American Red Cross/American government, Australian Red Cross, Austrian Red Cross, Belgian Red Cross/Belgian government, British Red Cross, Canadian Red Cross/Canadian government, Red Cross Society of China - Hong Kong branch and Macau branch, Danish Red Cross/Danish government, Finnish Red Cross/ Finnish government, French Red Cross, Hellenic Red Cross, Icelandic Red Cross, Irish Red Cross, Japanese Red Cross, Korean Red Cross, Luxembourg Red Cross/Luxembourg government, Monaco Red Cross, Netherlands Red Cross, New Zealand Red Cross, Norwegian Red Cross/Norwegian government, Portuguese Red Cross, Qatar Red Crescent, Singapore Red Cross, Slovak Red Cross, Spanish Red Cross/Spanish government, Swedish Red Cross/Swedish government, Swiss Red Cross, Taiwan Red Cross Organization, United Arab Emirates Red Crescent and Vietnam Red Cross Society. Contributions have also been received from ECHO, the Italian and Estonian governments and Total Oil Company.

The International Federation, on behalf of Myanmar Red Cross Society, would like to thank all partners for their very quick and generous response to this appeal.

## The situation

An assessment from Bogale by MRCS staff trained in regional disaster response, reports that many river and ponds are still full of dead bodies or are contaminated by salt water. In several townships and villages, high casualty figures are being reported.

Many people in remote villages have not yet received assistance. The situation in Bogale town, however, is improving with basic needs being addressed. People are collecting rainwater for drinking.

Seven clusters have been established in Bogale, for: food, health, water and sanitation, shelter, education, child protection and agriculture.

Tropical cyclone Nargis (which means daffodil in Urdu) struck the delta region of Myanmar on 2 May. The scale of destruction and loss is massive with official figures listing 78,000 people dead and 56,000

missing. The UN estimates that 2.4 million people are affected. A consequent storm surge, reportedly 3.5 metres in many areas, caused more loss of life than the cyclone itself.



Local Red Cross volunteers walk through the debris in Bogale to conduct assessments. The magnitude of destruction and lack of accessibility to affected areas makes their task all the more challenging. (International Federation)

## Red Cross Red Crescent action

### Operation overview

The overall goal is to restore and improve the lives and livelihoods and basic living conditions of communities affected by Cyclone Nargis.

The operation seeks to:

- Provide relief to meet the basic needs in a timely manner to those most affected;
- Provide recovery support to strengthen the resilience of the most vulnerable people among those affected; and
- Strengthen MRCS human resource capacity and overall operational effectiveness in the short, medium and long term (via an 'organizational development in emergencies' framework).

The plan of action focuses on the following needs: relief, community-based health and first aid, psychosocial support, emergency shelter, water and sanitation and hygiene promotion, and food security and livelihoods. The operation will be: needs based; integrated and holistic; recovery based; community based; and implemented in coordination, giving priority to areas not served by others. Lessons learnt from recent operations, such as the 2004 tsunami, have been included in planning for volunteering in emergencies which draws on the strengths of the community.

The operation is in three phases:

- **Phase 1:** Acute and short term; up to six months: Focus on survival needs, epidemic prevention and control and scaling up to meet needs for a larger target population while laying groundwork for early recovery
- **Phase 2:** Medium term; six to 12 months: Focus on enhancing operational efficiency and effectiveness for MRCS public services, volunteer base, and management/branch structures
- **Phase 3:** Longer term 12-36 months: Focus on development and expansion of community-based programmes; MRCS capacity building; and ongoing assessment to identify and provide support to households least able to recover.

### Operation update

The first key MRCS branches and hubs in the delta have been identified. They will be located in Myaungmaya, Bogale and Pyapon. These places are strategically well positioned and are also the areas of most intense Red Cross activity. Other potential locations, such as Pathien and Labutta, will be considered in the coming days, after senior members of MRCS have visited to clarify some issues.

The process of establishing these branches/hubs requires the identification of large numbers of staff, short term employees and volunteers. An advanced team of four members will be sent to each location to identify office space, employees, and Rubb Hall locations etc. This will be followed with basic training for staff and volunteers, and the formal establishment of a branch/hub in each location. It is intended to establish water and sanitation and hygiene promotion capacity at each hub, as well as to build capacity to ensure more thorough and focused distribution planning.



Red Cross workers distribute relief supplies and provide assistance to cyclone-affected villagers in Bogale. (International Federation)

Position descriptions and salary scales will be developed to support the recruitment of additional staff in the MRCS/International Federation offices in Yangon as well as the branches/hubs.

An outline of the volunteer management guidelines has been drafted and will be forwarded to MRCS for approval. This will be the basis for all Movement partners' in engagement with MRCS volunteers.

### Logistics

A flight carrying 2,000 shelter kits left from Kuala Lumpur for Yangon yesterday (21 May) afternoon. Landing permission was obtained for another four of these flights bringing in relief goods in the coming days. Meanwhile, in Bangladesh, the International Federation country office is preparing hygiene parcels, jerry cans and tarpaulins to be shipped by air to Myanmar next week.

The Belgian Red Cross in coordination with the regional logistics unit in Kuala Lumpur is planning to send mosquito nets and kitchen sets by sea from suppliers based in Bangkok and India respectively over the next few weeks. The Belgian Red Cross has also agreed to buy and donate two 20-foot containers for use as extra storage throughout the operation.

Limited sea freight services to Myanmar have been resumed, even though port facilities are presently regulated and only receiving 20-foot containers at maximum.



Red Cross volunteers board a boat loaded with relief supplies for families in the Ayeyarwady delta. (International Federation)

The logistics cluster has reported from today (22 May), the World Food Programme (WFP) will have a helicopter based in Yangon. Once further clearance from the Myanmar government is given, the option of more helicopters based there for use of all agencies working on relief operations transporting goods from Yangon to the delta area is being considered. The option to utilize barges for inland transport is also under discussion.

**MRCS:** The national society continues to chair daily coordination meetings involving national society, International Federation and the ICRC. The MRCS executive committee member responsible for the operation presides, with support from the deputy field assessment and coordination team (FACT) leader.

In Bogale township, more than 170 volunteers are tirelessly supporting Red Cross Red Crescent operations. In addition, they are helping other humanitarian organizations, such as German Agro Action and Action Contre La Faim, to distribute their relief. MRCS volunteers are leading the way to access the affected villages



A young boy in need of medical assistance is being carried by two local Red Cross volunteers. (International Federation)

The head of UN OCHA, Sir John Holmes, visited the MRCS headquarters as part of his trip to Myanmar to gain a field level perspective of needs and operational constraints. In his meeting with the national society leadership, topics of discussion included access to affected areas, the need to provide potable water to affected populations, and capacity issues of MRCS.

**The International Federation:** In Bangkok, the field assessment and coordination team (FACT)/regional disaster response team (RDRT) is being demobilized and handed over to the temporary operations coordinator in Bangkok, and the acting FACT leader in Yangon.

Recognizing the pressure on MRCS capacity, the International Federation has been emphasizing to all humanitarian organizations that any formal agreement with MRCS can only be decided by the national society senior leadership, supported by the International Federation.

Recruitment of key operational personnel is progressing. Two additional visas were granted today in Bangkok to International Federation personnel in response to selected personnel identified by and with the president of MRCS. Visa approval is also being obtained at other locations.

**Coordination, representation and media:** The UN secretary-general is due to arrive in Myanmar today (22 May) for a three-day visit. MRCS representatives and the International Federation head of country office will be among those he will meet. There will be a donor meeting in Yangon on 25 May to discuss support to the operation. This follows a government-hosted field visit, which will be attended by one or two representatives from partner national societies. Meanwhile, proactive engagement with the media is being maintained through a communications specialist in Yangon, supported by a team in Bangkok and Geneva.

## How we work

***All International Federation assistance seeks to adhere to the Code of Conduct for the International Red Cross and Red Crescent Movement and Non-Governmental Organizations (NGOs) in Disaster Relief and is committed to the Humanitarian Charter and Minimum Standards in Disaster Response (Sphere) in delivering assistance to the most vulnerable.***

The International Federation's activities are aligned with its Global

### Global Agenda Goals:

- Reduce the numbers of deaths, injuries and impact from

Agenda, which sets out four broad goals to meet the Federation's mission to "improve the lives of vulnerable people by mobilizing the power of humanity".

disasters.

- Reduce the number of deaths, illnesses and impact from diseases and public health emergencies.
- Increase local community, civil society and Red Cross Red Crescent capacity to address the most urgent situations of vulnerability.
- Reduce intolerance, discrimination and social exclusion and promote respect for diversity and human dignity.

## Contact information

- Federation regional office in Bangkok: Alan Bradbury, acting head of regional office, phone: +66 2661 8201, fax: +66.2.661.9322; email: [alan.bradbury@ifrc.org](mailto:alan.bradbury@ifrc.org)
- Federation zone office in Kuala Lumpur:
  - Jagan Chapagain, deputy head of zone office, phone: +6012 2153765, email: [jagan.chapagain@ifrc.org](mailto:jagan.chapagain@ifrc.org)
  - Amy Gaver, acting head of disaster management unit, phone: +6012 2201174, email: [amy.gaver@ifrc.org](mailto:amy.gaver@ifrc.org)
  - Penny Elghady, resource mobilization and PMER coordinator, phone: +603 9207 5775, email: [penny.elghady@ifrc.org](mailto:penny.elghady@ifrc.org)
  - For mobilization of relief items: Jeremy Francis, regional logistics coordinator, phone: +60 12 298 9752, fax: +60 3 2168 8573, email: [jeremy.francis@ifrc.org](mailto:jeremy.francis@ifrc.org)
  - For media/communications: John Sparrow, spokesman in Bangkok, phone: +66 847 572 442, email: [john.sparrow@ifrc.org](mailto:john.sparrow@ifrc.org)
- Federation secretariat in Geneva: Christine South, operations coordinator, Asia Pacific, phone: +41 22 730 4529; mobile: +41 79 308 9824; email: [christine.south@ifrc.org](mailto:christine.south@ifrc.org)

[<click here to return to the title page>](#)

## REVISED APPEAL BUDGET SUMMARY

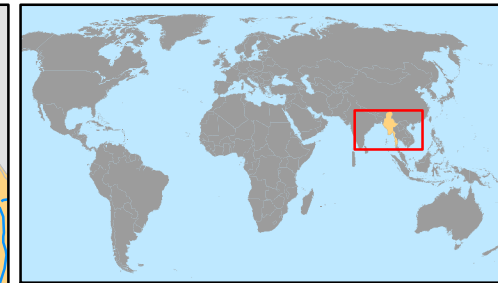
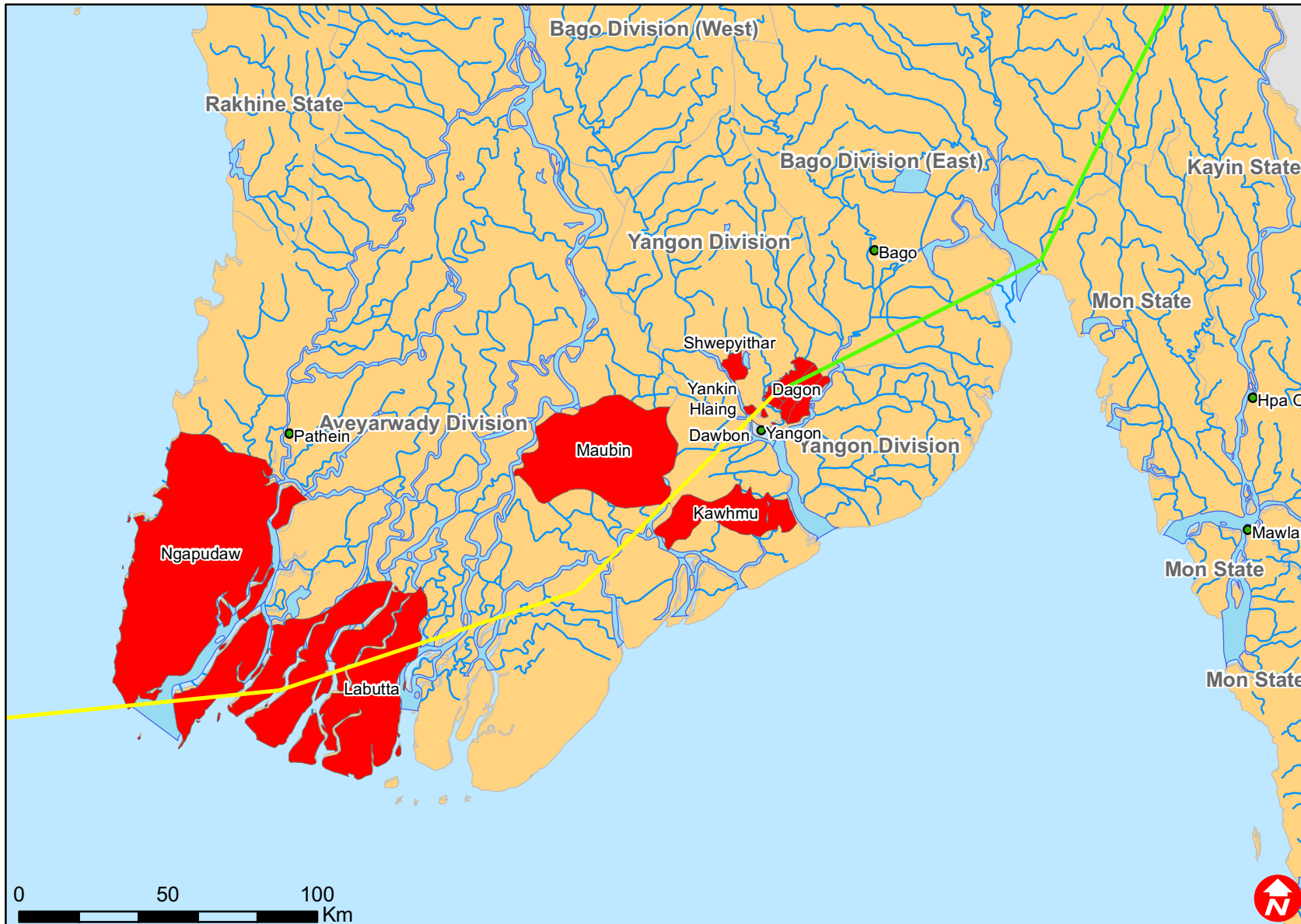
Myanmar:Cyclone Nargis

MDRMM002

	ORIGINAL	REVISED	VARIANCE
<b><u>RELIEF NEEDS</u></b>			
Shelter	1,800,000	12,144,000	-10,344,000
Clothing & Textiles	150,000	2,832,000	-2,682,000
Food	0	3,000,000	-3,000,000
Water & Sanitation	0	5,500,000	-5,500,000
Medical & First Aid	0	2,345,457	-2,345,457
Utensils & Tools	1,200,000	2,696,800	-1,496,800
Other Supplies & Services	1,200,000	2,935,529	-1,735,529
<b>Total Relief Needs</b>	<b>4,350,000</b>	<b>31,453,786</b>	<b>-27,103,786</b>
<b><u>CAPITAL EQUIPMENT</u></b>			
Vehicles Purchase	280,000	500,000	-220,000
Computers & Telecom Equipment	10,000	458,325	-448,325
Office/Household Furniture & Equip.	0	65,000	-65,000
<b><u>TRANSPORT, STORAGE &amp; VEHICLES</u></b>			
Storage - Warehouse	50,000	300,000	-250,000
Distribution & Monitoring	100,000	1,010,000	-910,000
Transport & Vehicles Costs	500,000	5,036,000	-4,536,000
<b><u>PERSONNEL</u></b>			
International Staff	372,000	4,650,000	-4,278,000
Regionally Deployed Staff	30,000	90,000	-60,000
National Staff	50,000	1,176,900	-1,126,900
National Society Staff	50,000	3,105,600	-3,055,600
Consultants	0	102,000	-102,000
<b><u>WORKSHOPS &amp; TRAINING</u></b>			
Workshops & Training	0	84,000	-84,000
<b><u>GENERAL EXPENSES</u></b>			
Travel	30,000	622,240	-592,240
Information & Public Relations	0	8,500	-8,500
Office running costs	30,000	559,000	-529,000
Communication Costs	30,000	185,700	-155,700
Other General Expenses	0	15,000	-15,000
<b><u>PROGRAMME SUPPORT</u></b>			
Programme Support - PSR (6.5% of total)	408,909	3,435,758	-3,026,848
<b>Total Operational Needs</b>	<b>1,940,909</b>	<b>21,404,023</b>	<b>-19,463,113</b>
<b>Total Appeal Budget (Cash &amp; Kind)</b>	<b>6,290,909</b>	<b>52,857,809</b>	<b>-46,566,899</b>
<b>Less Available Resources</b>		<b>17,600,348</b>	
<b>Net Request</b>	<b>6,290,909</b>	<b>35,257,461</b>	



# Myanmar: Tropical cyclone



- Most affected
- Provinces