

Operations update



International Federation
of Red Cross and Red Crescent Societies

Myanmar: Cyclone Nargis

Emergency appeal n° MDRMM002
GLIDE n° **TC-2008-00057-MMR**
Operations update n° 12
27 May 2008

Period covered by this Update: 11 days since revised emergency appeal launched

Revised Emergency Appeal launched 16 May 2008: CHF 52,857,809 (USD 50.8 million or EUR 32.7 million) to assist 100,000 families for three years;

[<click here to view the attached Emergency Appeal Budget>](#)

The revised plan of action covers the provision of life-saving assistance and short-term relief (for up to six months) as well as medium and longer term recovery needs. It aims to support a significant scaling up in the humanitarian response of the Myanmar Red Cross Society (MRCS) as well as the wider Red Cross Red Crescent Movement. The appeal seeks to do this in a way that: is sensitive to the national society's capacity; builds on MRCS' long-term strength; and takes account of the operational challenges that exist. In light of all this, partners are requested to continue their excellent support and understanding to the Cyclone Nargis appeal.

Appeal coverage (current): There continues to be a generous response to the appeal, with contributions received to date as well as those in the pipeline; the appeal is about 65 per cent covered.

[<Click here to link to the donor response list>](#) [<click here to link to contact details >](#)



Myanmar Red Cross workers prepare to distribute relief supplies to people affected by the cyclone in the southern delta region (International Federation)

Appeal history:

- 16 May 2008: A revised emergency appeal launched for CHF 52,857,809 (USD 50.8 million or EUR 32.7 million) to assist 100,000 families for three years.
- 6 May 2008: A preliminary emergency appeal launched for CHF 6,290,909 (USD 5.9 million or EUR 3.86 million) for six months to assist 30,000 families.
- 5 May 2008: CHF200,000 allocation from the Federation's Disaster Relief Emergency Fund (DREF).

Summary: The International Federation operations team is *cautiously* optimistic about gaining greater access for international staff in Myanmar. While there seems to be some movement on gaining visas for expatriate staff in some locations, there is however, still no clarity on what this means in real terms on the ground.

Even if this greater opening does materialize, several other challenges remain, including: gaining access to the delta area; the ability to stay overnight in the field or remain to work over a longer period; being able to work alongside local staff and Red Cross volunteers to set up efficient distribution systems; and the ability to have contact with and engage with beneficiaries. Without clarity that this is possible, the additional visas or numbers able to get to Yangon will not strengthen the response, but may be an additional burden on the operation and on the MRCS. It will also be important to streamline decision making processes with the MRCS, which have certainly progressed during the operation but still need attention to ensure that the additional resources can be used effectively.

Currently, negotiations are underway with the relevant government authorities, to get permission for three teams to visit three locations in the delta. These teams will include two expatriate staff each as well as local water and sanitation engineers. This is an important step in the strengthening of field planning and management of this operation and is also an important test to see how effectively the expatriate staff can engage at the field level.

The International Federation secretary-general and the director of the coordination and programme division attended the pledging conference, co-chaired by the Association of South-East Asian Nations (ASEAN) and the UN in Myanmar on 25 May. The secretary-general explained the activities of the International Red Cross Red Crescent Movement, and, in particular, highlighted the role and efforts of the volunteers. The secretary-general also spoke of the progress and challenges around this revised emergency appeal operation. He reported that Red Cross Red Crescent aid had reached 113,570 beneficiaries, of whom 72.5 per cent were in the delta region.

The International Federation Asia Pacific zone office is organizing a meeting with the leadership of ASEAN national societies in the light of the new proposed ASEAN/UN coordination mechanism and to see how the Red Cross Red Crescent may cooperate most effectively. The International Federation is also in contact with the ASEAN secretariat representatives in Jakarta and Myanmar on these issues.



Markku Niskala, secretary-general of the International Federation at the pledging conference in Myanmar.

Five MRCS volunteers are running an International Committee of the Red Cross (ICRC) water purification unit in Dedaye, which is producing 72,000 litres of water a day. Meanwhile, in Yangon, a

International Federation water and sanitation emergency response unit (ERU), staffed by five French Red Cross water engineers, has started another training session of ten MRCS volunteers and nine engineers from a local water company to be dispatched to the field soon.

The in-country field assessment and coordination team (FACT) member for water and sanitation outlined the operational approach at work: "As we cannot go into the field at this moment, we have organized some training for Myanmar nationals to be deployed. These are professional engineers; we are hopeful that they will do an excellent job in providing drinking water for the community."

The new recruits are becoming familiar with the equipment and are learning how to monitor and maintain its use. The ERU team leader said "All the trainees are doing well. When fully deployed to the field, they should be able to provide clean water for 40,000 people, providing 15 litres per person, per day."

One of the new engineering recruits said that although most of the equipment is new to him, he is ready to be dispatched to the field. "I am confident that I can provide people with safe drinking water. I want to help our people," he said.

Sad news, however, is coming in from the townships regarding Red Cross volunteers who have perished in the cyclone or lost their homes. The information is being consolidated and discussions will be held on how affected families and survivors can best be supported.

Many partner national societies have already made contributions to the appeal: American Red Cross/American government, Australian Red Cross, Austrian Red Cross, Belarusian Red Cross, Belgian Red Cross/Belgian government, British Red Cross/British government, Canadian Red Cross/Canadian government, Red Cross Society of China - Hong Kong branch and Macau branch, Danish Red Cross/Danish government, Finnish Red Cross/ Finnish government, French Red Cross, German Red Cross, Hellenic Red Cross, Icelandic Red Cross, Irish Red Cross, Japanese Red Cross, Republic of Korea Red Cross, Luxembourg Red Cross/Luxembourg government, Monaco Red Cross, Netherlands Red Cross, New Zealand Red Cross, Norwegian Red Cross/Norwegian government, Portuguese Red Cross, Qatar Red Crescent, Singapore Red Cross, Slovak Red Cross, Spanish Red Cross/Spanish government, Sri Lanka Red Cross, Swedish Red Cross/Swedish government, Swiss Red Cross, Taiwan Red Cross Organization, United Arab Emirates Red Crescent and Vietnam Red Cross Society. Contributions have also been received from European Commission Humanitarian Aid Directorate General (ECHO), the Italian and Estonian governments, Total Oil Company and the Stavros Niarchos Foundation. The International Federation, on behalf of the Myanmar Red Cross Society, would like to thank all partners for their very quick and generous response to this appeal.

The situation

Tropical cyclone Nargis (which means daffodil in Urdu) struck the mid-south of Myanmar on 2 May. The scale of destruction and loss is massive with official figures listing 78,000 people dead and 56,000 missing. The UN estimates that 2.4 million people are affected. A consequent storm surge, reportedly 3.5 metres in many areas, caused the most loss of life rather than the cyclone per se.

By 25 May, almost 700 tonnes of relief items coordinated by the regional logistics unit in Kuala Lumpur, had been airlifted into Yangon on various Red Cross Red Crescent flights. By 31 May, this figure is set to reach 836 tonnes. The flight on 25 May delivered 5,000 hygiene parcels (Republic of Korea Red Cross); 999 kitchen sets (Japanese Red Cross); 25,000 blankets (American Red Cross); 780 tarpaulins (Swiss Red Cross) and 2,500 tarpaulins and 900 kitchen sets (British Red Cross). As of 24 May, the operations mobilization table was covered for all items for 80,000 families and the International Federation is in negotiation with the field to see where additional needs should be covered.

It has also been confirmed that 80,000 blankets, an in-kind donation from Netherlands Red Cross, will be shipped by sea from a supplier in India in the near future. The relief pipeline continues to move well and the International Federation is now working with the team on the ground to ensure that it is maintained at a level that is well managed in-country, and is in line with distribution capacity.

Red Cross Red Crescent action

Operation overview

The overall goal is to restore and improve the lives and livelihoods and basic living conditions of communities affected by Cyclone Nargis.

The operation seeks to:

- Provide relief to meet the basic needs in a timely manner to those most affected;
- Provide recovery support to strengthen the resilience of the most vulnerable people among those affected; and
- Strengthen MRCS human resource capacity and overall operational effectiveness in the short, medium and long term (via an 'organizational development in emergencies' framework).



Myanmar Red Cross volunteers unload and distribute fresh drinking water to beneficiaries in the affected areas.

The plan of action focuses on the following needs: relief, community-based health and first aid, psychosocial support, emergency shelter, water and sanitation, and hygiene promotion, and food security and livelihoods. The operation will be: needs based; integrated and holistic; recovery based; community based; and implemented in coordination, giving priority to areas not served by others. Lessons learnt from recent operations, such as the 2004 tsunami, have been included in planning for volunteering in emergencies which draws on the strengths of the community.

The operation is in three phases:

- **Phase 1:** Acute and short term; up to six months: Focus on survival needs, epidemic prevention and control, and scaling up to meet the needs of a larger target population while laying groundwork for early recovery.
- **Phase 2:** Medium term; six to 12 months: Focus on enhancing operational efficiency and effectiveness for MRCS public services, volunteer base, and management/branch structures.
- **Phase 3:** Longer term; 12-36 months: Focus on the development/expansion of community based- programmes; MRCS capacity building; and ongoing assessments to identify and support affected households least able to recover.

Operation update

Relief: No distributions were carried out on 24 May due to the referendum that took place in the delta area, but were resumed on 25 May. Goods for 2,000 families were dispatched to Maubin, Myaungmya, Wakema and Bogale. Relief goods destined for Maubin and Myaungmya were set to be distributed to families in temporary shelters.

The team is working with MRCS to formalize the planning framework for the operation and the distribution plan for this week has been completed. This may have to be revised, but a basic framework is in place and the team is building capacity to establish plans for distributions and to report against those plans. However, the reconciliation of logistics and relief figures is still ongoing to provide consolidated information on distributions made to date. Progress is being made and it is hoped a fuller picture will be ready soon.

Emergency shelter: The new shelter delegate from the field assessment and coordination team (FACT) has arrived, has been briefed and will start to work on streamlining the International Federation support to MRCS on shelter. The shelter cluster has now approved the contents and standards for the three different types of kits: hamlet tool kits, household shelter kits and household non-food item kits. The International Federation will work together with the other main actors in the emergency shelter cluster to provide hamlet tool kits in an approach that will work at community or “hamlet” level rather than at individual family level. In this way, communities will be able to share resources and tools in a more practical way and this approach will be supplemented by additional supplies of tarpaulins, etc. to cover the needs of all families receiving the kits.

Emergency health and care: Preparations for the community-based



Tarpaulins being loaded onto a charter flight at Kuala Lumpur International Airport bound for Yangon. (International Federation)

first aid (CBFA) and health revision training are now underway. Training is expected to begin on Wednesday 28 May with volunteers from Kachin state, who will work with their colleagues in the affected areas of Ayeyarwady division.

The water and sanitation cluster is progressing well with sub-clusters being formed on different topics such as rainwater harvesting and deployment of units.

Logistics: The in-country team is continuing to look for additional warehouse space to accommodate incoming goods transported through four to six-tonne commercial flights which are being received daily and there is a need for additional space to accommodate the goods received.

In addition, there is now a green light for more human resources to go into Myanmar to support the logistics operation. This will include support for the longer term logistics coordinator and logistics delegate position, as well as the air operations member of the British Red Cross logistics ERU team. The logistics ERU procurement delegate is also on standby.

Focus is now shifting from only air freight to a mixture of sea freight and air freight of relief items as limited shipping services have resumed to Yangon port. Air freight will continue for some items which are still considered very urgent needs.

Presently a review is being made of the needs and the coverage of basic non-food items by all agencies. The mobilization table may not be increased to cover 100,000 families, but may rather shift to other items needed for shelter and early recovery.

MRCS: There has been recent success in efforts to enhance MRCS capacity through the strengthening of MRCS field structures, through the plans to support the hubs and build MRCS branches in those locations and through the work to support MRCS human resources and volunteer management systems and procedures. Guidelines on support for volunteers are being revised with the support of the organizational development delegate.

Despite this progress, challenges still remain, particularly in terms of longer term planning. Logistics management is also one area that the MRCS/International Federation team is continually looking to strengthen national society capacity.

International Federation: The team in Yangon has been reinforced by two additional national staff: an administrative assistant for logistics and a receptionist. A notice has been circulated, advertising for additional staff for the team - the demand for quality staff has increased dramatically with many organizations scaling up operations and new organizations coming in.

The focus is now on confirming the recruitment of key personnel for the longer term posts in support of the country team. In the last couple of days, as well as the logistics positions, the existing programme coordinator for Myanmar (who was recruited before the cyclone) has gone into Yangon to support the team.

The International Committee of the Red Cross (ICRC) has offered an additional two water plants in support of MRCS/International Federation. There is also the possibility of getting support from ICRC personnel specialized in water and economic security in-country to support water and sanitation and livelihoods planning and programming.

Coordination: The in-country MRCS/International Federation team continues to participate in the key clusters: shelter, health, and water and sanitation. Sector coordination is working well; however, there continue to be some challenges with respect to inter-cluster coordination.

Discussions were held with Department for International Development (British government/DFID) in-country regarding the operation and longer-term implementation. Issues around International Federation access and capacity were discussed and the hub concept outlined. DFID was impressed with the strategy and is currently looking into how it may support the operation further.

The team met with the ECHO representative in Yangon to discuss the operation and cooperation with MRCS.

How we work

All International Federation assistance seeks to adhere to the Code of Conduct for the International Red Cross and Red Crescent Movement and Non-Governmental Organizations (NGOs) in Disaster Relief and is committed to the Humanitarian Charter and Minimum Standards in Disaster Response (Sphere) in delivering assistance to the most vulnerable.

The International Federation's activities are aligned with its Global Agenda, which sets out four broad goals to meet the Federation's mission to "improve the lives of vulnerable people by mobilizing the power of humanity".

Global Agenda Goals:

- Reduce the numbers of deaths, injuries and impact from disasters.
- Reduce the number of deaths, illnesses and impact from diseases and public health emergencies.
- Increase local community, civil society and Red Cross Red Crescent capacity to address the most urgent situations of vulnerability.
- Reduce intolerance, discrimination and social exclusion and promote respect for diversity and human dignity.

Contact information

- Federation regional office in Bangkok: Alan Bradbury, acting head of regional office, phone: +66 2661 8201, fax: +66.2.661.9322; email: alan.bradbury@ifrc.org
- Federation zone office in Kuala Lumpur:
 - Jagan Chapagain, deputy head of zone office, phone: +6012 2153765, email: jagan.chapagain@ifrc.org
 - Amy Gaver, acting head of disaster management unit, phone: +6012 2201174, email: amy.gaver@ifrc.org
 - For pledges of funding: Penny Elghady, resource mobilization and PMER coordinator, phone: +603 9207 5775, email: penny.elghady@ifrc.org
 - For mobilization of relief items: Jeremy Francis, regional logistics coordinator, phone: +60 12 298 9752, fax: +60 3 2168 8573, email: jeremy.francis@ifrc.org
 - For media/communications: John Sparrow, spokesperson in Bangkok, phone: +66 847 572 442, email: john.sparrow@ifrc.org
- Federation secretariat in Geneva: Christine South, operations coordinator Asia Pacific, phone: +41 22 730 4529; mobile: +41 79 308 9824; email: christine.south@ifrc.org

[<click here to return to the title page>](#)

REVISED APPEAL BUDGET SUMMARY

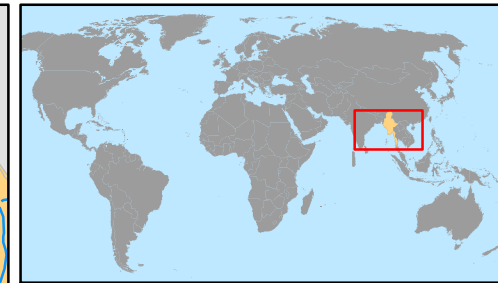
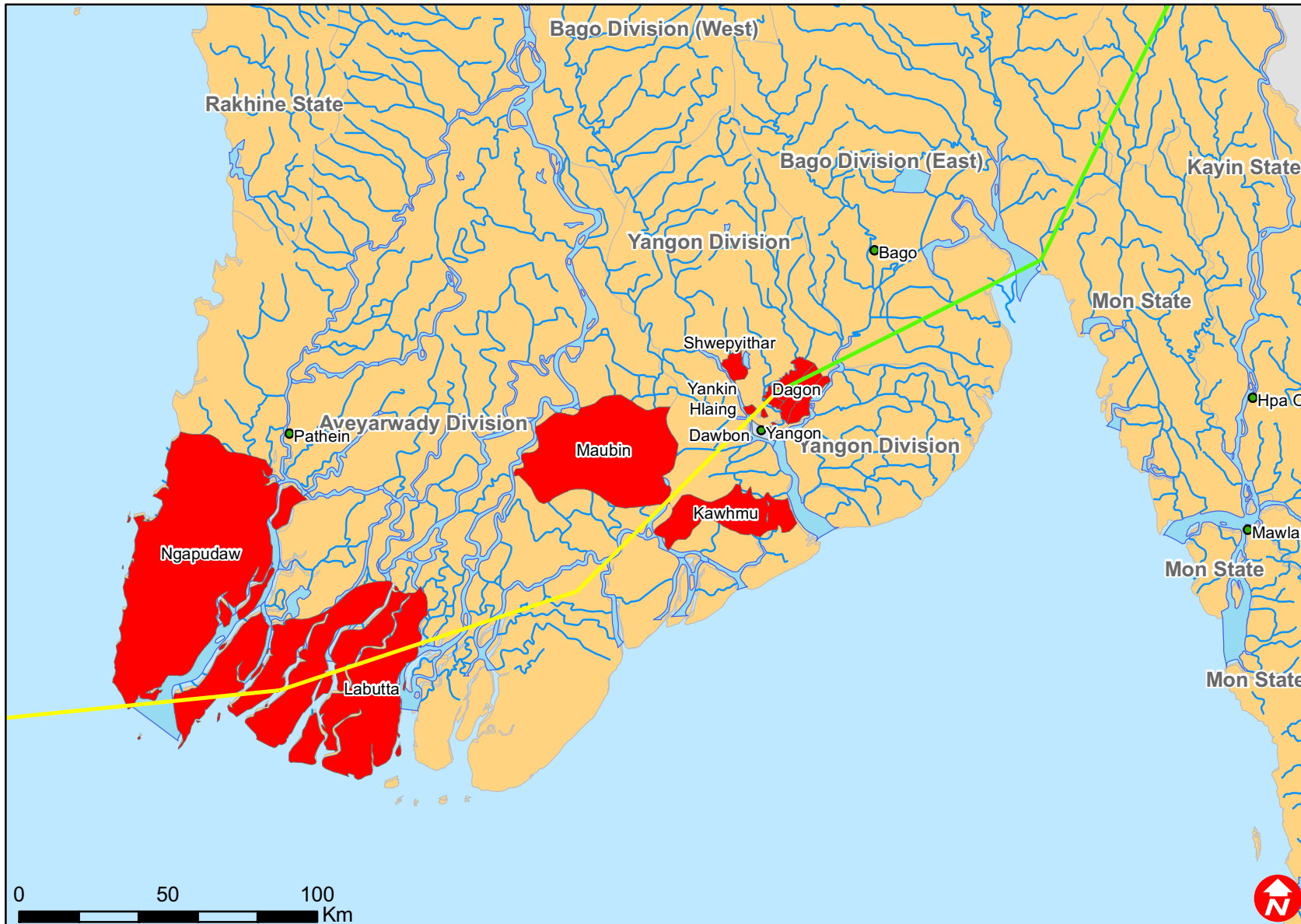
Myanmar:Cyclone Nargis

MDRMM002

	ORIGINAL	REVISED	VARIANCE
<u>RELIEF NEEDS</u>			
Shelter	1,800,000	12,144,000	-10,344,000
Clothing & Textiles	150,000	2,832,000	-2,682,000
Food	0	3,000,000	-3,000,000
Water & Sanitation	0	5,500,000	-5,500,000
Medical & First Aid	0	2,345,457	-2,345,457
Utensils & Tools	1,200,000	2,696,800	-1,496,800
Other Supplies & Services	1,200,000	2,935,529	-1,735,529
Total Relief Needs	4,350,000	31,453,786	-27,103,786
<u>CAPITAL EQUIPMENT</u>			
Vehicles Purchase	280,000	500,000	-220,000
Computers & Telecom Equipment	10,000	458,325	-448,325
Office/Household Furniture & Equip.	0	65,000	-65,000
<u>TRANSPORT, STORAGE & VEHICLES</u>			
Storage - Warehouse	50,000	300,000	-250,000
Distribution & Monitoring	100,000	1,010,000	-910,000
Transport & Vehicles Costs	500,000	5,036,000	-4,536,000
<u>PERSONNEL</u>			
International Staff	372,000	4,650,000	-4,278,000
Regionally Deployed Staff	30,000	90,000	-60,000
National Staff	50,000	1,176,900	-1,126,900
National Society Staff	50,000	3,105,600	-3,055,600
Consultants	0	102,000	-102,000
<u>WORKSHOPS & TRAINING</u>			
Workshops & Training	0	84,000	-84,000
<u>GENERAL EXPENSES</u>			
Travel	30,000	622,240	-592,240
Information & Public Relations	0	8,500	-8,500
Office running costs	30,000	559,000	-529,000
Communication Costs	30,000	185,700	-155,700
Other General Expenses	0	15,000	-15,000
<u>PROGRAMME SUPPORT</u>			
Programme Support - PSR (6.5% of total)	408,909	3,435,758	-3,026,848
Total Operational Needs	1,940,909	21,404,023	-19,463,113
Total Appeal Budget (Cash & Kind)	6,290,909	52,857,809	-46,566,899
Less Available Resources		17,600,348	
Net Request	6,290,909	35,257,461	



Myanmar: Tropical cyclone



-  Most affected
-  Provinces

The maps used do not imply the expression of any opinion on the part of the International Federation of the Red Cross and Red Crescent Societies or National Societies concerning the legal status of a territory or of its authorities.

Map data sources: ESRI, CIESIN, DEVINFO, UNISYS, International Federation, inundation extent are MODIS-derived processed by Dartmouth Flood Observatory - MDRMM002EA.mxd