

DREF operation



International Federation
of Red Cross and Red Crescent Societies

RWANDA: Local Storm

DREF operation n° MDRRW004

GLIDE n° FL-2008-000182-RWA

15 October 2008

The International Federation's Disaster Relief Emergency Fund (DREF) is a source of un-earmarked money created by the Federation in 1985 to ensure that immediate financial support is available for Red Cross and Red Crescent response to emergencies. The DREF is a vital part of the International Federation's disaster response system and increases the ability of national societies to respond to disasters.

CHF 159,334 (USD 145,644 or EUR 101,487) has been allocated from the Federation's Disaster Relief Emergency Fund (DREF) to support the Rwandan Red Cross in delivering immediate emergency shelter to some 1,000 households (5,000 people). Unearmarked funds to repay DREF are encouraged.

Summary: A total of 2,259 households from four districts in Rwanda have been affected by strong winds and heavy rains which occurred on 28 September 2008. A rapid assessment conducted by the Rwandan Red Cross and partners have identified emergency shelter as the main priority needs in the affected districts. The National Society has already delivered immediate relief support to some 200 of the most affected households (1,000 people).

The Rwandan Red Cross has requested a DREF to support 1,000 affected households with emergency shelter in the worst affected districts of Rubavu, Ngoma and Kihere. This operation is expected to be implemented over 2 months, and will therefore be completed by 13 December 2008. A Final Report will be made available three months after the end of the operation.

[*<Click here for the DREF budget summary, and here for contact details, or here to view the map of the affected area>*](#)

The situation

Rwanda experienced heavy rains and strong winds on 28 September 2008. The affected districts included Rubavu and Nyamasheke located in the western province and Kirehe and Ngoma districts located in the eastern province. The heavy rains and strong winds caused extensive damage to houses, schools and churches.

The residential areas of Majengo Mbugangari in Rubavu District were hardest hit by the winds, which swept away the roofs of more than 1,000 houses. The affected people were forced to seek temporary accommodation with the neighbours, while others have found refuge in churches that resisted the strong winds. Several schools also lost their roofs and educational materials were damaged by the strong winds and heavy rains. As a result, about 9,000 students are not going to school.

No deaths have been reported. However, a total of 51 people were injured including 6 serious cases. Among those affected include 32 students from Rubavu District, who have been traumatized and injured by collapsing walls.

The situation may deteriorate, if nothing is done immediately. The following figures show the situation according to the evaluation report made on 3 October 2008.

Table 1: Summary of districts affected by strong winds and heavy rains

Affected Districts	Damaged Houses	Hectares of Farmland Destroyed	Damaged Infrastructure
Rubavu	1,982	172 hectares of banana plantations	106 classrooms destroyed
Ngoma	118	None	None
Kirehe	159	153.7 hectares of banana plantations 2.5 hectares of cassava plantations	4 churches
Nyamasheke	No information available at the moment.		

Though there are some farmlands that were destroyed as a result of the strong winds, the assessment report showed that the affected households still have a substantial amount of farmland with crops which they can depend on for food.

Coordination and partnerships

Joint coordination meetings have been organized to discuss the disaster situation. The meetings involve the Ministries of Interior and National Security, Infrastructure, Rwandan Red Cross, United Nations (UN) agencies including the UN Children's Fund (UNICEF), the World Food Programme (WFP), the World Health Organization (WHO), the Food and Agriculture Organization of the UN (FAO), the United Nations High Commissioner for Refugees (UNHCR) as well as other NGO partners including CARE International and World Vision.

The Government, through Rubavu District, will give support by providing framing sticks for houses to be rehabilitated. The management of the assistance will be under the responsibility of the district, with technical support from the Rwandan Red Cross.

Red Cross and Red Crescent action

Initial response from the Rwandan Red Cross involved assisting some 400 households who were affected by the heavy rains and strong winds. On the day of the disaster, local committee volunteers assisted the affected students from Rubavu District, who were traumatized by offering psychological support. The volunteers also transported the wounded people to Gisenyi Hospital.

Other activities already carried out by Rwandan Red Cross in response to the disaster include:

- An assessment of the situation and the needs of the affected people.
- Deployment of a support assessment team (1 RDRT¹ member, 1 health staff and 1 information dissemination officer)
- Construction equipment (300 iron sheets and 55 Kgs of nails) were distributed to households which had the roof tops of their houses completely destroyed and, could not be salvaged.
- Distribution of 800 plastic sheeting to households that could salvage their iron sheets and, are already planning to repair their roof tops using the salvaged iron sheets.
- Ngoma and Kirehe districts were provided with temporary shelter (227 plastic sheeting)

The needs

A total of 2,259 households have been affected by the strong winds. However, assessment results indicate that the western province is the most affected and more than 1,000 households had the roof tops of their houses destroyed. The most vulnerable families require temporary shelter from the ongoing heavy rains. Rwandan Red Cross plans to continue supporting these families with plastic sheeting to cover their houses. Some households managed to salvage some of the iron sheets for repair; however some households which had their iron sheets blown away will continue to be assisted with iron sheets and nails to rebuild the roofs.

The proposed operation

The proposed operation is to contribute to the efforts of the Rwandan Government by providing prompt temporary shelter to 1,000 most vulnerable households over a period of 2 months. The Rwandan Red Cross has already supported 400 households with plastic sheeting and iron sheets and thus, the additional 1,000 households will be provided with plastic sheeting, out of which 200 of the most vulnerable households will be identified for iron sheet distribution.

¹ RDRT: Regional Disaster Response Team

Relief distributions

Objective: To improve the living conditions of 1,000 households through provision of temporary shelter and construction tools.

Activities

- Identification and registration of 1,000 households in need of temporary shelter.
- Identification of 200 most vulnerable households for the iron sheet distribution.
- Procurement, transportation and distribution of plastic sheeting
- Procurement, transportation and distribution of iron sheets and nails for reconstruction of the roof tops.

Monitoring and evaluation

Coordination at national level will be done by the Disaster Management Unit in collaboration with the concerned ministries and the Rwandan Red cross. The National Society, through the provincial coordinators of the eastern and western provinces will coordinate the activities of volunteers and will participate in the decentralized meetings at district level.

Daily reports will be produced at field level in coordination with the provincial coordinator and 1 National Disaster Response Team (NDRT) member from Rubavu District. The Disaster Management department will regularly transmit these reports to all partners.

How we work

All International Federation assistance seeks to adhere to the [Code of Conduct for the International Red Cross and Red Crescent Movement and Non-Governmental Organizations \(NGO's\) in Disaster Relief](#) and is committed to the [Humanitarian Charter and Minimum Standards in Disaster Response \(Sphere\)](#) in delivering assistance to the most vulnerable.

The International Federation's activities are aligned with its Global Agenda, which sets out four broad goals to meet the Federation's mission to "improve the lives of vulnerable people by mobilizing the power of humanity".

Global Agenda Goals:

- Reduce the numbers of deaths, injuries and impact from disasters.
- Reduce the number of deaths, illnesses and impact from diseases and public health emergencies.
- Increase local community, civil society and Red Cross Red Crescent capacity to address the most urgent situations of vulnerability.
- Reduce intolerance, discrimination and social exclusion and promote respect for diversity and human dignity.

Contact information

For further information specifically related to this operation please contact:

- **In Rwanda:** Appolinaire Karamaga, Secretary General, Rwandan Red Cross, email: karamagaa@yahoo.fr; phone: +250.585.449
- **In Kenya:** Nancy Balfour, Disaster Management Coordinator Eastern Africa Zone, Nairobi; email: nancy.balfour@ifrc.org; phone: +254.20.283.5208; fax: +254.20.271.2777
- **In Kenya:** Dr. Asha Mohammed, Head of Federation's Eastern Africa Zone, Nairobi; email: asha.mohammed@ifrc.org; phone: +254.20.283.51.24; Fax: +254.20.271.27.77;
- **In Geneva:** John Roche, federation Operations Coordinator (Eastern and Southern Africa), Geneva; email: john.roche@ifrc.org; phone: +41.22.730.4400

[<DREF budget summary and map below; click here to return to the title page>](#)

DREF OPERATION BUDGET SUMMARY

RWANDA: LOCAL STORM

MDRRW004

BUDGET CHF

RELIEF NEEDS

Shelter	135,960
Construction Materials	
Clothing & Textiles	
Food	
Seeds & Plants	
Water & Sanitation	
Medical & First Aid	
Teaching Materials	
Utensils & Tools	
Other Supplies & Services	
Total Relief Needs	135,960

CAPITAL EQUIPMENT

Land & Buildings
Vehicles Purchase
Computers & Telecom Equipment
Office/Household Furniture & Equip.
Medical Equipment
Other Machinery & Equipment

TRANSPORT, STORAGE & VEHICLES

Storage - Warehouse	
Distribution & Monitoring	4,510
Transport & Vehicles Costs	1,951

PERSONNEL

International Staff	
Regionally Deployed Staff	
National Staff	792
National Society Volunteers	3,300
Consultants	

WORKSHOPS & TRAINING

Workshops & Training

GENERAL EXPENSES

Travel	
Information & Public Relations	1,760
Office running costs	
Communication Costs	660
Professional Fees	
Financial Charges	44
Other General Expenses	

SERVICE FEES

Service Fees

PROGRAMME SUPPORT

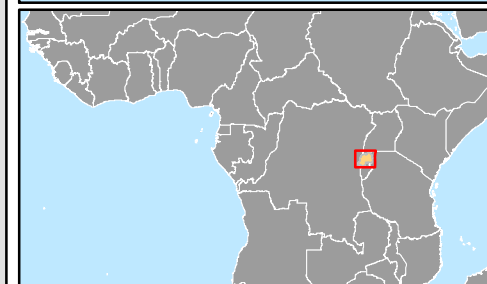
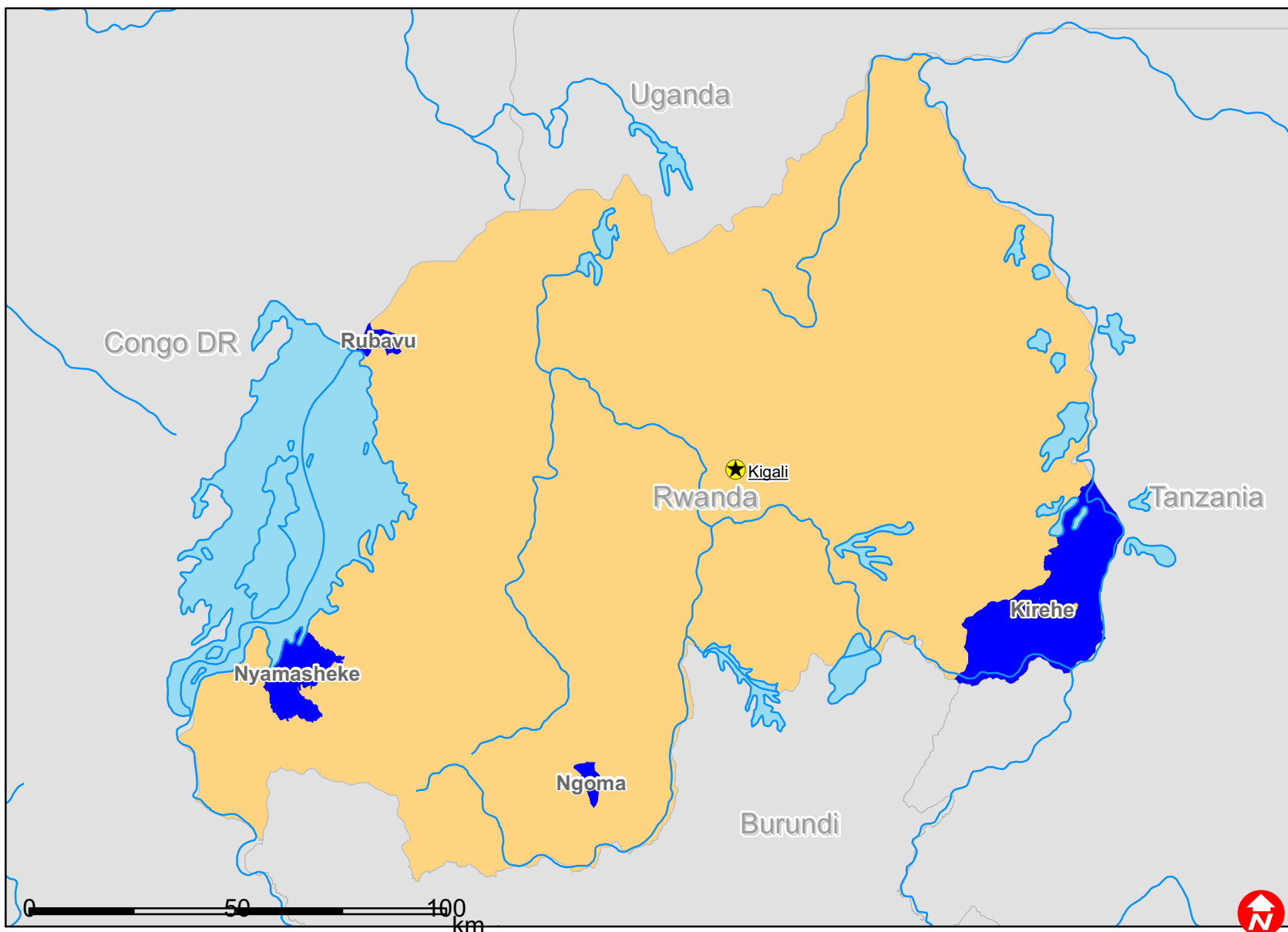
Programme Support - PSR	10,357
-------------------------	--------

Total Operational Needs **23,374**

DREF ALLOCATION **159,334**



Rwanda: Local Storm



 Affected areas