

DREF operation



International Federation
of Red Cross and Red Crescent Societies

Angola: Floods

DREF operation n° MDRAO003
GLIDE n° FL-2009-000063-AGO
12 March 2009

The International Federation's Disaster Relief Emergency Fund (DREF) is a source of un-earmarked money created by the Federation in 1985 to ensure that immediate financial support is available for Red Cross and Red Crescent response to emergencies. The DREF is a vital part of the International Federation's disaster response system and increases the ability of national societies to respond to disasters.

CHF 182,567 (USD 154,908 or EUR 123,488) has been allocated from the International Federation of Red Cross (IFRC)'s Disaster Relief Emergency Fund (DREF) to support the Angola Red Cross (ARC) in delivering immediate assistance to some 2,000 displaced families, as well as for social mobilisation and information education and communication (IEC) campaigns for a further 100,000 beneficiaries. Un-earmarked funds to repay DREF are encouraged.

Summary: Heavy rains experienced in the last three weeks have caused flooding along the Cuvelai basin affecting approximately 120,000 people. The flooded area is among the poorest in the country and with a high prevalence rate of HIV. The surrounding rural areas are characterized by very poor clean water supply and sanitation systems, hence are prone to outbreaks of water-borne diseases.



Flooded houses flooded in Onjiva Cunene Province
Photo: Angola Red Cross

ARC has responded initially by assisting with evacuation and distribution of basic relief items, targeting 2,000 most affected families. With support of the IFRC representative in Angola, 220 volunteers will be mobilised to conduct social mobilisation and hygiene promotion campaigns, distribute relief items which include water treatment tablets, oral rehydration solution (ORS), jerry cans, blankets and kitchen sets. The IFRC Southern African Zone Office (SAZO) has backup through the disaster management department, which is well positioned to deploy technical support upon request of the National Society.

This operation is expected to be implemented over three months, ending by June 2009 and a Final Report will be made available three months after the end of the operation (by September 2009).

[<click here for the DREF budget, here for contact details, or here to view the map of the affected area>](#)

The situation

The Cunene Province in Angola, with a population of approximately 732,000 people, has over the past three weeks experienced heavy rains mostly in its central part including the provincial capital Onjiva. The average rainfall in Cunene Province is normally 600mm, thus between December and April. However, in the current rain season, Cunene has received an average rainfall of 866.5mm as of 2 March 2009. The dike protecting Onjiva is cracking, flooding the provincial capital which has a population of about 60,000 inhabitants. The three worst affected municipalities are located in the southern part of the province, thus Kwahama (Onjiva, Evale, Môngua, Nehone and Chimpolo), Namacunde (Namacunde and Shiede), and Cuvelai (Mukolongondjo, Mupa, Kalonga Kubati). Roads to Cuvelai are awash, leaving the municipality with an estimated population of 30,000 isolated, reachable only by air and water (boats). Already 4,720 houses have been destroyed and families rendered homeless.

Flooding is also spreading to neighbouring provinces such as Huila and Kuando Kubango, along the border with Namibia. As such, the north-eastern and north-western parts of Namibia are mostly affected, where an estimated 130,000 are at risk. A team of hydrologists from Angola and Namibia carried out aerial inspections in the upper part of the Cuvelai basin and revealed that flooded water continues building up from the north. In Evale, 55 km north of Onjiva, the water levels are increasing at a very high rate compared to the 2008 floods in the same area.

The floods have damaged roads and bridges such that schools and health post are inaccessible to my school children and villagers respectively. Connection to major towns has also been cut, whilst hundred hectares of field crops are submerged. Small livestock has been lost and many villagers are moving without their basic household items. It is estimated that more than 120,000 people will be affected by the floods, although statistics will be confirmed after a joint assessment is carried out.

Consequently an outbreak of cholera was reported in Okanguati and Opuwo areas in Cunene province. Statistics given by the Ministry of Health (MoH) indicate 143 suspected cholera cases, of which nine were confirmed cholera cases and seven confirmed deaths (four people died in the hospital and three in the community) by 9 February 2009. Cholera is envisaged to rapidly increase due to the poor sanitation infrastructure and a lack of safe drinking water in the area.

Coordination and partnerships

A joint assessment is being conducted by the ARC disaster management team, OXFAM, UNICEF and the National Committee of Civil Protection, since 6 March 2009. While the extent and impact of the disaster is still to be determined, relief operations have been activated by the Government. Initial relief items to cater for the initial caseload of 400 displaced people were provided within the first 48 hours of the disaster. On 8 March 2009, the Ministry of Health dispatched relief items into the Cunene Province. Furthermore, Angola military provides support in logistics and operational needs. Stakeholder meetings are on-going to define relief actions, further needs assessments and to determine roles and responsibilities among the partners.

Red Cross and Red Crescent action

The ARC responded to the initial call for assistance by sending relief items available from current stock, which includes 2,300 jerry cans, 700 mosquito nets, and 60,000 sachets of oral rehydration solutions (ORS). A total of 50 volunteers were initially mobilised from ARC provincial office in Onjiva currently working alongside the Ministry of Health staff members on sensitization, information, education and communication (IEC) and the distribution of chlorine tablets, among other relief items.

The National Society will be supported and guided by the IFRC country representative and the disaster management department at the IFRC Southern Africa Zone Office (SAZO). The DREF has enabled ARC to kick start the operation, however partners are requested to assist with the replenishment of the fund. Within the first three to four weeks, ARC with support of SAZO will determine sufficiency of the DREF and in the event of a need for additional funding; an Emergency Appeal will be launched accordingly.

The needs

Beneficiary selection: The displaced families need, in the short term, safe and secure shelter, clean water, sanitation facilities and basic relief items. Several camps have been established in Onjiva (accommodating 22,000 people), and Cachila, which has three camps catering for 12,000 persons, where access to safe drinking water, sanitation and health services are priority.

The proposed operation

The ARC, in collaboration with MoH and OXFAM, will initially mobilize 120 volunteers to conduct social mobilization, health education and basic sanitation targeted at 100,000 people over a period of three months. In addition, the National Society will provide chlorine tablets and ORS, as well as monitoring the distribution of all the relief items. The relief items' distribution is targeted to benefit 2,000 families (approximately 12,000 beneficiaries).

Relief distributions (food and basic non-food items)

Objective: 2,000 flood-affected families are provided with appropriate non-food relief items. Distributions are carried out according to assessments and selection criteria that identify actual needs and vulnerable groups, as per the registration protocol that ensures control, monitoring and recording movement of goods.

Activities planned:

- Distributing 2,000 mosquito nets, 180,000 chlorine tablets, 4,000 jerry cans, blankets, ORS and an estimated 2,000 kitchen sets (still to be determined).
- Mobilising 120 volunteers for IEC campaigns, social mobilization, relief item distribution for Onjiva, as well as a minimum of 100 additional volunteers in other areas, depending on the outcome of the rapid assessment.
- Developing a beneficiary targeting strategy and registration system to deliver the intended assistance.
- Monitoring and evaluating relief activities and report on relief distributions.

Water, sanitation, and hygiene promotion (Still to be determine based upon on-going assessment)

Objective: The risk of water-borne and water-related diseases reduced through the provision of safe water, adequate sanitation as well as hygiene promotion to 12,000 beneficiaries in Onjiva relocation camp for three months.

Activities planned:

- To provide potable water, appropriate sanitation and hygiene promotion for 12,000 people in Onjiva and surrounding villages, in cooperation with OXFAM and local Ministry of Health officials.
- Training and sharing information with ARC volunteers and beneficiaries focused on hygiene, domestic water chlorination as well as safe use of water treatment chemicals.
- Social mobilisation campaigns to reach an estimated 100,000 people within the surrounding villages.

Emergency health

Objective: To reduce health risks, morbidity and mortality resulting from the emergency by providing health education, community-level and primary healthcare services to households in affected regions for three months.

Activities planned:

- Training 250 community-based volunteers on health education using the community-based health and First Aid methodology.
- Sustaining health promotion campaigns within the affected population focusing on malaria and water-borne diseases.
- Supporting and providing IEC materials to be used in the health promotion campaign.

Emergency shelter

Objective: 2,000 most vulnerable flood-affected families in Angola are living in a safe and healthy environment within three months of the operation.

Activities planned:

- Distributing shelter construction material to the affected families.
- Assisting the government in erecting temporary shelter at the relocation camps.

How we work

All International Federation assistance seeks to adhere to the [Code of Conduct for the International Red Cross and Red Crescent Movement and Non-Governmental Organizations \(NGO's\) in Disaster Relief](#) and is committed to the [Humanitarian Charter and Minimum Standards in Disaster Response \(Sphere\)](#) in delivering assistance to the most vulnerable.

The International Federation's activities are aligned with its Global Agenda, which sets out four broad goals to meet the Federation's mission to "improve the lives of vulnerable people by mobilizing the power of humanity".

Global Agenda Goals:

- Reduce the numbers of deaths, injuries and impact from disasters.
- Reduce the number of deaths, illnesses and impact from diseases and public health emergencies.
- Increase local community, civil society and Red Cross Red Crescent capacity to address the most urgent situations of vulnerability.
- Reduce intolerance, discrimination and social exclusion and promote respect for diversity and human dignity.

Contact information

For further information specifically related to this operation please contact:

- In **Angola**: Walter Bombo Guange Quifica, Secretary General, Email: vquifica@yahoo.com; Phone: Tel Office: +244.222.39.32.84, Mobile: +244.92.23.13.242; Fax +244.222.372.868 (IFRC)
- In **Angola**: Karen Hvid: Federation Representative: Email: Karen.hvid@ifrc.org; Phone: Tel: +244.923.408.577; Fax: +244.222.372.868
- In **Southern Africa Zone**: Françoise Le Goff, Head of Zone Office, Johannesburg; Email francoise.legoff@ifrc.org; Phone: Tel: +27.11.303.9700; +27.11.303.9711; Fax: +27.11.884.3809; +27.11.884.0230
- In **Geneva**: John Roche, Operations Coordinator, Email: john.roche@ifrc.org; Phone: +41.22.730.4400, Fax: +41.22.733.03.95

[<DREF budget and map below; click here to return to the title page>](#)

ANGOLA DREF BUDGET SUMMARY

ORIGINAL

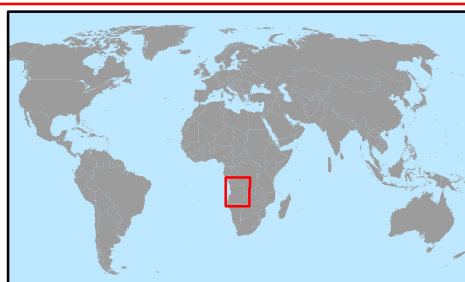
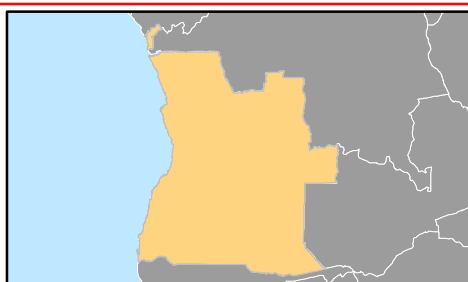
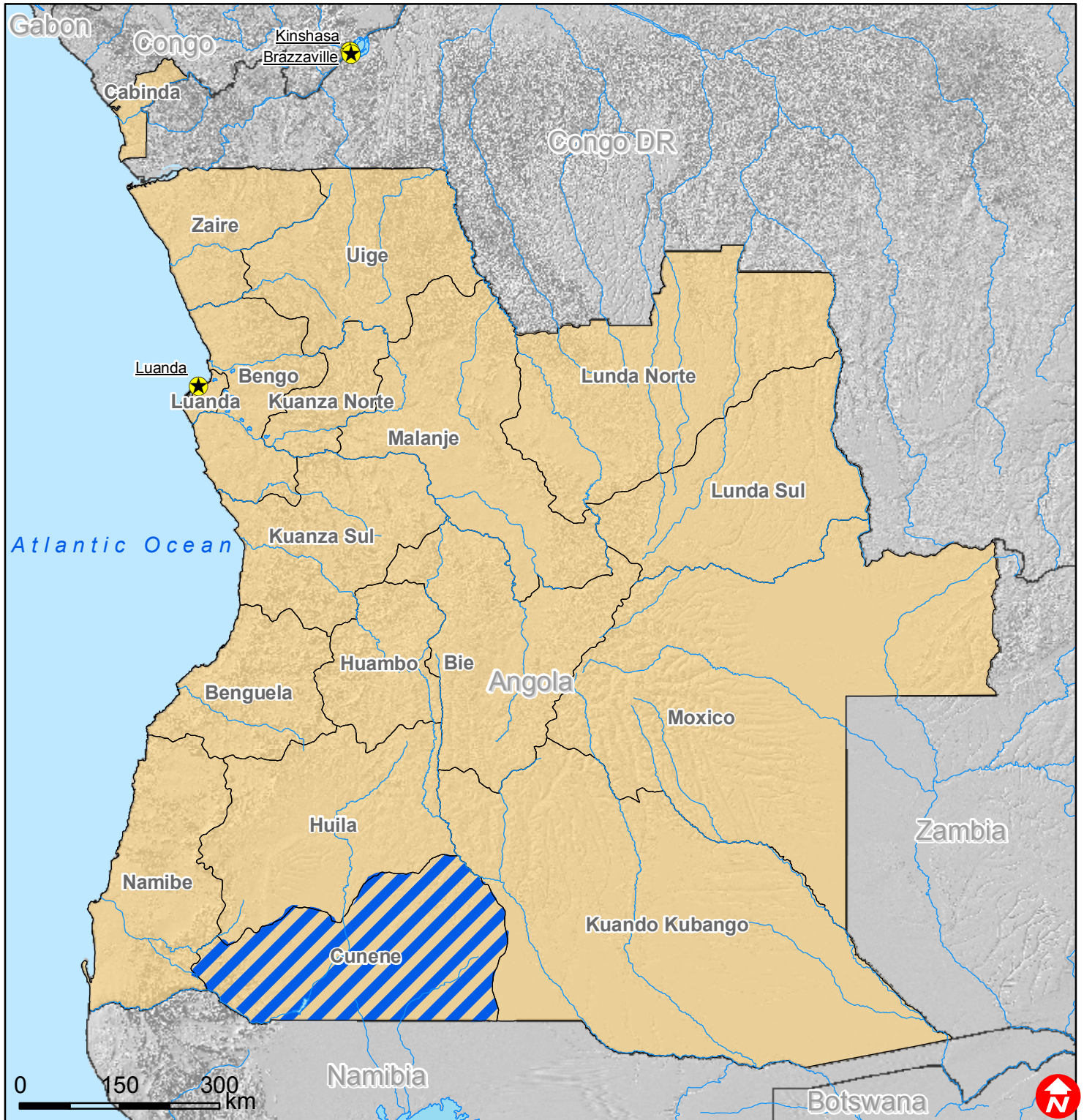
<u>RELIEF NEEDS</u>		
500	Shelter	6,000
505	Construction Materials	0
510	Clothing & Textiles	6,000
520	Food	0
523	Seeds & Plants	0
530	Water & Sanitation	54,400
540	Medical & First Aid	0
550	Teaching Materials	0
560	Utensils & Tools	2,200
570	Other Supplies & Services	1,600
Total Relief Needs		70,200
<u>CAPITAL EQUIPMENT</u>		
580	Land & Buildings	0
581	Vehicles Purchase	0
582	Computers & Telecom Equipment	0
584	Office/Household Furniture & Equip.	0
587	Medical Equipment	0
589	Other Machinery & Equipment	0
<u>TRANSPORT, STORAGE & VEHICLES</u>		
590	Storage - Warehouse	0
593	Transport & Vehicles Costs	66,000
<u>PERSONNEL</u>		
600	International Staff	0
640	Regionally Deployed Staff	0
661	National Staff	0
662	National Society Staff	10,000
670	Consultants	0
<u>WORKSHOPS & TRAINING</u>		
680	Workshops & Training	4,000
<u>GENERAL EXPENSES</u>		
700	Travel	6,000
710	Information & Public Relations	5,000
730	Office running costs	0
740	Communication Costs	1,500
750	Professional Fees	0
790	Other General Expenses	8,000
<u>PROGRAMME SUPPORT</u>		
599	Programme Support - PSR	11,867

Total Operational Needs

182,567



Angola: Floods



- Capitals
- Rivers
- Lakes
- Provinces
- Affected areas