

# DREF operation



International Federation  
of Red Cross and Red Crescent Societies

## Togo: Cholera

DREF operation n° MDRTG002  
GLIDE n° EP-2009-000012-TGO  
12 January 2009

The International Federation's Disaster Relief Emergency Fund (DREF) is a source of un-earmarked money created by the Federation in 1985 to ensure that immediate financial support is available for Red Cross and Red Crescent response to emergencies. The DREF is a vital part of the International Federation's disaster response system and increases the ability of national societies to respond to disasters.

**CHF 75,376 (USD 68,548 or EUR 50,254) is requested from the Federation's Disaster Relief Emergency Fund (DREF) to support the Togolese Red Cross in delivering immediate assistance to some 300,000 beneficiaries. Un-earmarked funds to repay DREF are encouraged.**

**Summary:** The Togolese Red Cross (TRC) is assisting the government in controlling the outbreak of cholera epidemic in Lome and its environs since December 2008. With 429 cases and 3 deaths reported since the outbreak, the Togolese Red Cross through its team of volunteers has been active in sensitizing the affected communities and carrying out health and hygiene activities. The national society is also involved in detecting and referring cases to health facilities. Though



The cholera outbreak is attributed to the Poor sanitation habit of the affected communities (Photo: **Togolese Red Cross**).

number of reported cases is decreasing in Lome, the Togolese Red Cross plans to intensify its activities in the affected communities as well as in neighbouring districts identified as prone to the widely contagious epidemic. The national society will be assisting them through hygiene and health education as well as sensitization activities in the communities. The action is aimed at reducing the suffering of the victims, their families and the communities at large.

This operation is expected to be implemented over 3 months, and will therefore be completed by March, 2009; a Final Report will be made available three months after the end of the operation (by May 2009).

[<click here for the DREF budget ,](#)  
[here for contact details,](#)  
[or here to view the map of the affected area>](#)

## The situation

The Government of Togo through a press release on 12 December 2008 has officially confirmed the outbreak of cholera epidemic in the country's capital Lome and its environs. According to the Ministry of Health (MoH) and the Togolese Red Cross, 478 cases with 3 deaths have been recorded so far.

The outbreak is attributed to the poor sanitation habit of the population, lack of portable water source as well as the effects of the recent floods in the country. Cases referred to medical facilities are becoming worrisome as the facilities in public health centre are precarious.

Although, cases are decreasing in Lome, there are fears that if urgent and swift actions are not taken by health workers, Non-Governmental Organizations (NGOs) and other stakeholders mostly in the area of sensitization, the epidemic risks spreading to other neighbouring districts. The government has requested the assistance of the Togolese Red Cross in mobilizing its volunteers to carry out sensitization in communities identified as prone to the epidemic.

Since the outbreak of the epidemic, the Togolese Red Cross has mobilized 250 volunteers in the affected communities to carry out hygiene sensitization activities and assist health authorities in referring cases to designated health centres.

## Coordination and partnerships

With support from the Federation's West Coast regional office in Lagos, the Togolese Red Cross aims at strengthening its collaboration with the Ministry of Health (MoH), the United Nations Development Programme (UNDP), United Nations Children's Fund (UNICEF), PLAN INTERNATIONAL TOGO, and CREPA-TOGO to reducing the suffering of the affected persons and carry out sensitization activities in other communities identified as risk areas.

## Red Cross and Red Crescent action

With the number of reported cases on the decrease in Lome, the Togolese Red Cross is intensifying its house-to-house sensitization activities on good hygiene practices symptoms and steps to take if a case is detected (91,255 household about 145,000 persons include 55,532 children were sensitized by the TRC Volunteers in collaboration with Cluster Wash - Togo). Early referral activities are also ongoing (23 cases were referred). The national society is planning to train more of its volunteers to carry out these activities in other districts prone to the epidemic. With the support of UNICEF, TRC volunteers dispose of 285 Hygienic Kits (soap, buckets, aqua tablets) to assist affected household and its neighbours.

The International Federation, through its delegation in Lagos, Nigeria, continues to work closely with the national society by supporting its staff and volunteers in all activities of the Red Cross and ensuring that management as well as operational issues are directed and implemented within the principles and core values of the Red Cross Movement to reach the needs of the most vulnerable.

## The needs

### Beneficiary selection

The beneficiaries of this operation are 300,000 persons of the most affected areas in Lome and other districts prone to the epidemic. The national society plans to mobilize and train 250 volunteers and 15 members in the area of community mobilization, sensitization, health education and prevention of epidemic. This will enable them to effectively penetrate the community during the sensitization exercise.

## The proposed operation

### Hygiene promotion

*Objective:* To complement government's effort in the prevention and control of the disease by reducing the morbidity and avoiding mortality from the cholera, like watery diarrhoea epidemic in the most affected communities of Lome and its environs.

### Activities planned:

1. Participate actively at coordination meetings at the national level in Lome in order to obtain the relevant statistics;
2. Train 250 Red Cross volunteers and 15 members in Lome as well as coaches to be deployed to support the activities planned;
3. Intensify the collaboration with the MoH, the World Health Organization (WHO) and other actors in the cholera control efforts by looking for suspect cases and reporting them to health authorities (surveillance), referring and/or transporting sick persons to or from a health facility (referrals); sensitizing communities on refuse disposal and hygiene and health promotion, deploy a regional

- health resource team from West Coast regional office to support the Togolese Red Cross in the management of the epidemic;
4. Provide the volunteers and teams with welfare, logistics support and protective materials as detailed in the budget attached;
  5. Promote and respect the fundamental principles of the Red Cross/Red Crescent Movement.

**Expected outcomes:**

1. All Red Cross activities are implemented in a coordinated way thus avoiding duplication of services with other actors. Red Cross experience is also shared with others at coordination meetings and during surveillance, reporting, response and advocacy activities at the national and district levels;
2. 250 well trained and motivated Red Cross volunteers and 15 members of the Togolese Red Cross have been able to reach the most affected people and have provided life saving support to those falling sick from the epidemic;
3. Hygiene and health education, early case detection and referral as well as sensitizations have been useful in reducing the number of victims;
4. The regional resource team from the West Coast regional office will have increased the capacity of the Togolese Red Cross by providing technical support and advice;
5. Volunteers have been provided with welfare, insurance, protective materials and logistics;
6. The public has come to know more about the role of the Red Cross/Red Crescent Movement.

<b>How we work</b>	
<p><i>All International Federation assistance seeks to adhere to the <a href="#">Code of Conduct for the International Red Cross and Red Crescent Movement and Non-Governmental Organizations (NGO's) in Disaster Relief</a> and is committed to the <a href="#">Humanitarian Charter and Minimum Standards in Disaster Response (Sphere)</a> in delivering assistance to the most vulnerable.</i></p>	
<p>The International Federation's activities are aligned with its Global Agenda, which sets out four broad goals to meet the Federation's mission to "improve the lives of vulnerable people by mobilizing the power of humanity".</p>	<p><b>Global Agenda Goals:</b></p> <ul style="list-style-type: none"> <li>• Reduce the numbers of deaths, injuries and impact from disasters.</li> <li>• Reduce the number of deaths, illnesses and impact from diseases and public health emergencies.</li> <li>• Increase local community, civil society and Red Cross Red Crescent capacity to address the most urgent situations of vulnerability.</li> <li>• Reduce intolerance, discrimination and social exclusion and promote respect for diversity and human dignity.</li> </ul>
<b>Contact information</b>	
<p><b>For further information specifically related to this operation please contact:</b></p> <ul style="list-style-type: none"> <li>• In Togo: <i>Norbert PANIAH, National President, Togolese Red Cross, Lome</i>; phone: +2282212110; email: <a href="mailto:crtisiegel@laposte.tg">crtisiegel@laposte.tg</a></li> <li>• In Nigeria: <i>Chinyere Emeka-Anuna, Acting Head of Federation West Coast Regional Office, Lagos</i>; phone: +234 12. 695. 228; Fax: +234. 12. 695.229; email: <a href="mailto:chinyere.emekaanuna@ifrc.org">chinyere.emekaanuna@ifrc.org</a></li> <li>• In Dakar: <i>Alasan Senghore, Head of Zone, West and Central Africa Zone</i>, phone:+221 869 36 40, Fax:+221 33 820 25 34, email: <a href="mailto:alasan.senghore@ifrc.org">alasan.senghore@ifrc.org</a> <i>Youcef AITCHELLOUCHE, Disaster Management Coordinator</i>, phone:+221 8693644 West and Central Africa Zone, email: <a href="mailto:youcet.aitchellouche@ifrc.org">youcet.aitchellouche@ifrc.org</a></li> </ul>	

[<DREF budget and map below; click here to return to the title page>](#)

## DREF BUDGET SUMMARY

### ORIGINAL

#### RELIEF NEEDS

500 Shelter	0
505 Construction Materials	0
510 Clothing & Textiles	0
520 Food	0
523 Seeds & Plants	0
530 Water & Sanitation	0
540 Medical & First Aid	1,000
550 Teaching Materials	4,360
560 Utensils & Tools	0
570 Other Supplies & Services	280
<b>Total Relief Needs</b>	<b>5,640</b>

#### CAPITAL EQUIPMENT

580 Land & Buildings	0
581 Vehicles Purchase	0
582 Computers & Telecom Equipment	0
584 Office/Household Furniture & Equip.	0
587 Medical Equipment	0
589 Other Machinery & Equipment	0

#### TRANSPORT, STORAGE & VEHICLES

590 Storage - Warehouse	0
592 Distribution & Monitoring	0
593 Transport & Vehicles Costs	1,425

#### PERSONNEL

600 International Staff	0
640 Regionally Deployed Staff	0
661 National Staff	61,430
662 National Society Staff	0
670 Consultants	0

#### WORKSHOPS & TRAINING

680 Workshops & Training	655
680 <i>Monitoring and evaluation</i>	0

#### GENERAL EXPENSES

700 Travel	0
710 Information & Public Relations	0
730 Office running costs	0
740 Communication Costs	800
750 Professional Fees	0
760 Financial Charges	0
790 Other General Expenses	150

#### PROGRAMME SUPPORT

599 Programme Support - PSR	5,276
-----------------------------	-------

---

**Total Operational Needs 69,736**

---

**Total Appeal Budget (Cash & Kind) 75,376**

---

**Available Ressources**

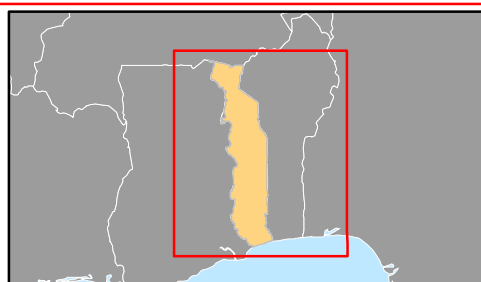
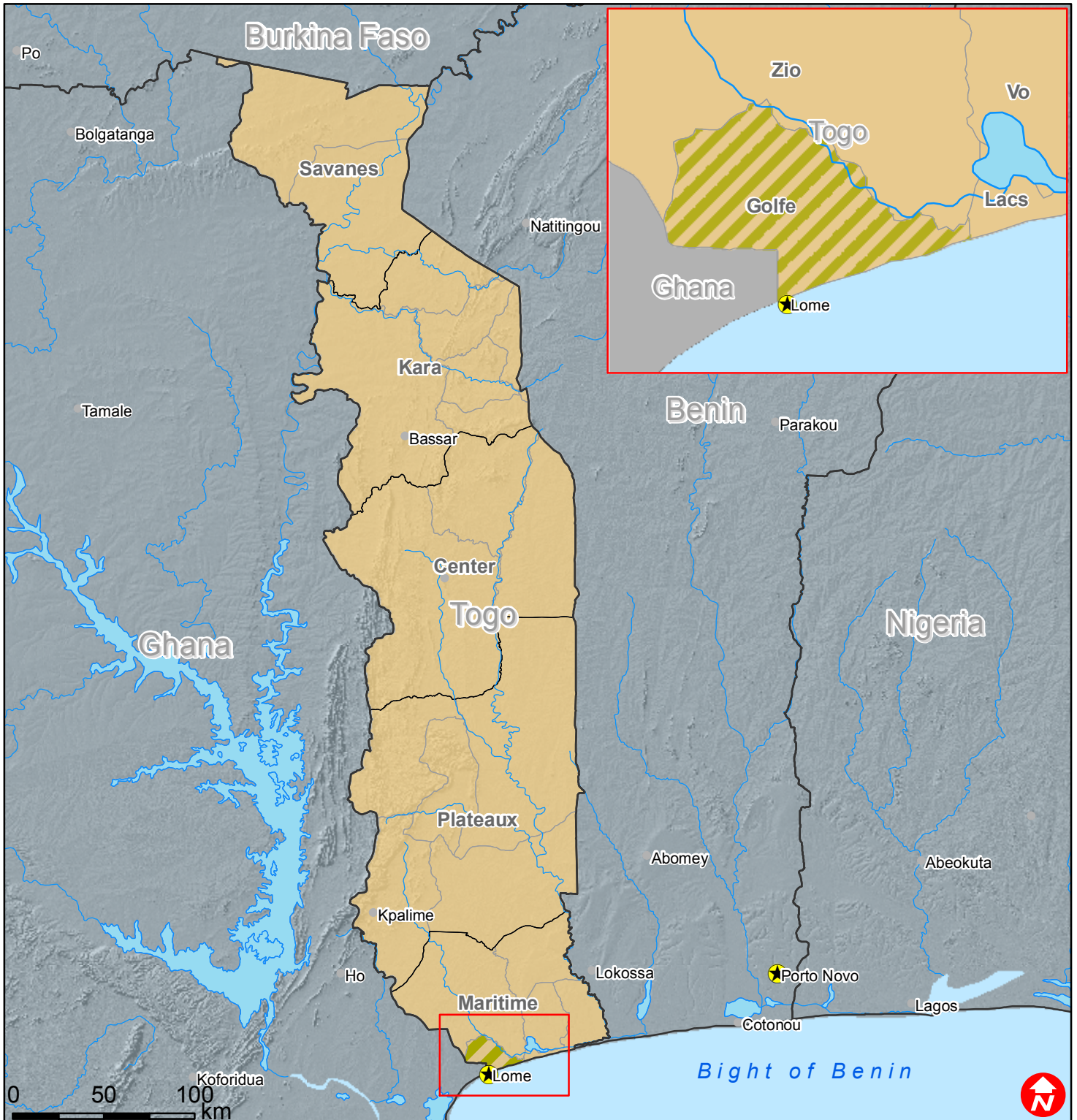
---

**Net Request 75,376**

---



# Togo: Cholera



- ★ Capitals
- Cities
- River
- Lake
- Provinces
- Districts
- ▨ Affected area