

# DREF operation update



## Bangladesh: Local Storm

DREF operation n° MDRBD006  
GLIDE n° [ST-2010-000074-BGD](#)  
Update n° 1  
28 April 2010

IFRC's Disaster Relief Emergency Fund (DREF) is a source of un-earmarked money created by IFRC in 1985 to ensure that immediate financial support is available for Red Cross and Red Crescent response to emergencies. The DREF is a vital part of the IFRC's disaster response system and increases the ability of national societies to respond to disasters.

**Period covered by this update: 21 April to 28 April 2010.**

### Summary:

**CHF 267,129 (USD 250, 677 or EUR 186, 294) was allocated from IFRC's Disaster Relief Emergency Fund (DREF) on 21 April 2010 to support the Bangladesh Red Crescent Society (BDRCS) in delivering immediate assistance to at least 22,500 people (4,500 families).**

The nor'wester (tropical storm) hit bordering districts of Bangladesh namely Rangpur, Kurigram, Lalmonirhat, Nilphamari and Dinajpur on 14 April 2010. A total of 49,382 families were affected by the storm. Some adjacent districts including Gaibandha, Sirjaganj and Bogra were also hit by the storm. When the affected people in Lalmonirhat started repairing their houses, another nor'wester slashed more villages on 17 April. The latter also killed three people and caused damages to 2,000 dwellings.

Local administration sources confirmed that a total of eight people, including one woman, were killed and more than 200 people were injured in the tropical storm, caused primarily by collapsed buildings, fallen trees, and thunderstorm.

50,000 dwellings, half of which are thatched houses, were partially or completely damaged after wind speeds reached a maximum of 100 km/h. Around 100 education institutions were damaged. The strong wind associated with rain caused damages to standing crops. Road links among different districts also remained suspended for the first ten hours as the uprooted trees remained on the roads. Power and telephone facilities were disrupted.

Household items, including cooking facilities, utensils and food stocks were blown away. As a result, most of the affected population were forced to live in the open air.



Volunteers are assisting the affected people in fixing their house. Photo credit: IFRC

The government of Bangladesh responded swiftly to the situation and allocated 728 metric tons of rice and BDT 3,685,000 (CHF 56,700) as a cash grant. The distribution process also started among the affected population by this time. Injured persons also received medical treatment at neighbouring government hospitals and health centres.

With the support from IFRC, BDRCS deployed 200 Red Crescent Youth (RCY) volunteers in the immediate aftermath of the storm to evacuate people to safer places, such as schools and other public buildings. The volunteers also assisted in fixing damaged houses. A team comprising of BDRCS/IFRC staff members conducted a rapid needs assessment in three affected districts from 15 till 17 April. Unit level officers of neighbouring districts were on stand-by to assist staff and volunteers in the affected districts.

As per the assessment findings, a total of 4,500 households in four districts will be assisted with a package of supplementary food; non-food items (NFIs) and emergency shelter materials. The distribution of the relief packages is expected to be completed by May 2010. BDRCS and IFRC have jointly decided to deploy BDRCS's national disaster response team (NDRT) to assist the respective units in selecting appropriate beneficiaries, distribution of items and monitoring. Procurement of the items is in progress.

The Canadian Red Cross Society/Canadian Government has contributed CAD 50,000 (CHF 53,846) towards the replenishment of the DREF for the allocation made to this operation. The IFRC, on behalf of the BDRCS, would like to thank all donors and partners for their generous support of DREF. Details of all donors can be found at the following URL:

<http://www.ifrc.org/what/disasters/responding/drs/tools/dref/donors.asp>

[<click here to view contact details>](#)

## The situation

The nor'wester that caused havoc in eastern India on the night of 14 April 2010 also hit bordering districts of Bangladesh - Dinajpur, Rangpur, Nilphamari, Lalmonirhat and Kurigram. Some adjacent districts including Gaibandha, Sirjaganj and Bogra were also got affected. Local administration sources confirmed that eight people were killed and more than 200 people were injured in the tropical storm.

Following the report from the local administration team, respective BDRCS branches, and the media, at least 50,000 dwellings, half of which are thatched houses, were partially or completely damaged. The strong winds and rain also caused damage to crops and trees. Several thousand of trees were uprooted, then communication was disrupted, and there were power cuts in some places when the storm toppled a number of electric poles causing most of the affected areas. According to the local agricultural department crops of tens of thousands of hectares were destroyed in the affected districts due to the storm.

Dinajpur agriculture extension department reported that maize from 4,000 hectares of land was damaged due to the nor'wester. Thousands of mangos and litchi trees in different upazilas of the district were badly damaged. Crops, particularly maize, were damaged in Lalmonirhat.

The storm accompanied by hail caused heavy damage to crops, especially maize and boro rice in Kishoreganj upazila of Nilphamari. As a result, poor farmers will face seed scarcity during the next planting season. In addition, around 100 education institutions were damaged -- which leads to the temporary suspension of academic activities.

Household items, including cooking facilities, utensils, and food stocks were blown away. This adds insult to injury for women who are already in a state of deep despair as they struggle to feed their families.

Some of the affected population are still living in the open air in makeshift shelters on the sites of their original homes. Rainfall on the morning of 17 April in some areas further exacerbated the misery of those, currently without adequate shelter.

The government of Bangladesh allocated 728 metric tonnes of rice and BDT 3,685,000 (CHF 56,700) as cash grants among the affected people. District and sub-district government hospitals and health centres provided health care support to the injured people.

BDRCS and IFRC reviewed the stock of non-food items (NFIs) available for distribution among the beneficiary families. All respective BDRCS units mobilized volunteers for beneficiaries' selection. BDRCS has already mobilized four national disaster response team (NDRT) members for assisting the targeted units in relief operation.

## Coordination and partnerships

BDRCS local units coordinated with local authorities in terms of exchanging information on the damage and needs of the affected population and to learn about the response of the government. BDRCS/IFRC communicated with traditional partners, including the European Commission's Humanitarian Aid department (European Commission). For possible support BDRCS and IFRC reviewed the stock of NFIs available for dispatch to the affected districts. BDRCS is an active member of the disaster emergency response (DER) group, chaired by the ministry of food and disaster management. Through this group information and operational updates have been shared with other humanitarian agencies and government departments to avoid any possible overlapping of assistance.

## Red Cross and Red Crescent action

With support from IFRC, BDRCS deployed 200 Red Cross youth volunteers in the immediate aftermath of the storm to evacuate people to safer places, such as schools and other public buildings. Volunteers also assisted people in fixing damaged houses. A joint BDRCS and IFRC assessment team conducted a rapid needs assessment of the area from 15 to 17 April. BDRCS mobilized its fleet, warehouse, and logistics resources to despatch relief items from its central warehouse in Dhaka. Unit level officers (ULO) of neighbouring districts were on stand-by to assist staff and volunteers in the affected districts.

NDRT members were on alert to be deployed in the affected districts. As per the decision jointly made by the BDRCS and IFRC, four NDRT members were mobilized to assist respective units in the relief operation. Currently unit volunteers are conducting assessment for selecting beneficiaries.

## Progress towards objectives

### Relief distributions (food, basic non-food items and emergency shelter materials)

#### Objective 1:

4,500 severely affected families or 22,500 people in four districts will receive a package of supplementary food (15-day rations for a five member family), NFIs and emergency shelter materials. Each family will get the following items in a single distribution:

**Food items** - 20kg rice, five kg dahl (lentils), two litre edible oil, and one kg iodized salt.

**NFIs** - one saree, one lungi and one jerry can.

**Emergency shelter materials** - one tarpaulin, one plastic sheet, one kg rope and 250 gm of wire.

**Progress:** Several meetings were held between BDRCS and IFRC's Disaster Management (DM) team to finalize the distribution plan. BDRCS has already issued the official order to four units forming the criteria for the selection of beneficiaries. Accordingly, units have started initial assessments for selecting beneficiaries. The list of beneficiaries will be finalized and verified with the assistance of the NDRT.

BDRCS has also mobilized four NDRT members for assisting the units in distribution and monitoring. NDRT members will assist the respective unit in the beneficiary selection process as well as in distribution of items. The NDRT members will be deployed in the field from 28 April, 2010. In addition, IFRC will send two field monitoring officers to work together with NDRT and the unit team.

The procurement of food items and NFIs (i.e. plastic sheets, rope and wire), is in progress and rest of the items in the package (i.e. saree, lungi, water jerry cans and tarpaulins), will be borrowed from BDRCS/IFRC NFIs stock. This stock will be replenished later. Food items and some NFIs are expected to be delivered and ready for distribution after quality inspection in the third week of May. (See following table).

**Table: PoA-distribution of items and replenishment of NFIs**

Activity	Time frame					Remarks
	April	May	June	Jul	Aug	
Rapid assessment						Done
Mobilization of unit volunteers for selection of beneficiaries						Done
Mobilization of NDRT						Done
Procurement of FI and some NFI						In progress, completed by 2 <sup>nd</sup> week of May
Selection and registration of beneficiary families						
Distribution of items						
Replenishment of NFIs						
Reporting/updates	<i>Update</i>	<i>Update</i>		<i>Update</i>		Final report in November

## How we work

All International Federation assistance seeks to adhere to the [Code of Conduct for the International Red Cross and Red Crescent Movement and Non-Governmental Organizations \(NGOs\) in Disaster Relief](#) and is committed to the [Humanitarian Charter and Minimum Standards in Disaster Response](#) (Sphere) in delivering assistance to the most vulnerable.

The International Federation's activities are aligned with its Global Agenda, which sets out four broad goals to meet the Federation's mission to "improve the lives of vulnerable people by mobilizing the power of humanity".

### Global Agenda Goals:

- Reduce the numbers of deaths, injuries and impact from disasters.
- Reduce the number of deaths, illnesses and impact from diseases and public health emergencies.
- Increase local community, civil society and Red Cross Red Crescent capacity to address the most urgent situations of vulnerability.
- Reduce intolerance, discrimination and social exclusion and promote respect for diversity and human dignity.

## Contact information

For further information specifically related to this operation please contact:

### Bangladesh Red Crescent Society:

- Capt. (Retd.) Abu Bakar, (Secretary General); Email: [bdrcs@bangla.net](mailto:bdrcs@bangla.net) phone; + 8802 935 2226.

### IFRC Bangladesh Delegation:

- Mr. Udaya Kumar Regmi, Head of Delegation; email: [udaya.regmi@ifrc.org](mailto:udaya.regmi@ifrc.org) ; phone; +88 02 9337314, fax: + 8802 934 1631

### IFRC South Asia Regional Office, in India:

- Mr. Azmat Ullah. Head of regional office, email: [azmat.ullah@ifrc.org](mailto:azmat.ullah@ifrc.org) , phone: +91 11 2411 1122, fax: +91 11 2411 1128

### IFRC Asia Pacific Zone Office, in Malaysia:

- Jagan Chapagain, Deputy Head of Zone, email: [jagan.chapagain@ifrc.org](mailto:jagan.chapagain@ifrc.org) Phone +60392075700
- Penny Elghady, Resources Mobilization and Planning, Monitoring, Evaluation and Reporting, Coordinator, email: [penny.elghady@ifrc.org](mailto:penny.elghady@ifrc.org) , phone +603 9207 5775
- Elzat Mamutalieva, Operations Coordinator for the Disaster Management Unit phone: +603 9 2075727; mobile: +6019 27 44 960, email: [elzat.mamutalieva@ifrc.org](mailto:elzat.mamutalieva@ifrc.org)

[<click here to return to the title page>](#)

# DREF operation update



International Federation  
of Red Cross and Red Crescent Societies

## Bangladesh: Local Storm

DREF operation n° MDRBD006  
GLIDE n° **ST-2010-000074-BGD**  
Update n° 1  
28 April 2010

IFRC's Disaster Relief Emergency Fund (DREF) is a source of un-earmarked money created by IFRC in 1985 to ensure that immediate financial support is available for Red Cross and Red Crescent response to emergencies. The DREF is a vital part of the IFRC's disaster response system and increases the ability of national societies to respond to disasters.

**Period covered by this update: 21 April to 28 April 2010.**

### Summary:

**CHF 267,129 (USD 250, 677 or EUR 186, 294) was allocated from IFRC's Disaster Relief Emergency Fund (DREF) on 21 April 2010 to support the Bangladesh Red Crescent Society (BDRCS) in delivering immediate assistance to at least 22,500 people (4,500 families).**

The nor'wester (tropical storm) hit bordering districts of Bangladesh namely Rangpur, Kurigram, Lalmonirhat, Nilphamari and Dinajpur on 14 April 2010. A total of 49,382 families were affected by the storm. Some adjacent districts including Gaibandha, Sirjaganj and Bogra were also hit by the storm. When the affected people in Lalmonirhat started repairing their houses, another nor'wester slashed more villages on 17 April. The latter also killed three people and caused damages to 2,000 dwellings.

Local administration sources confirmed that a total of eight people, including one woman, were killed and more than 200 people were injured in the tropical storm, caused primarily by collapsed buildings, fallen trees, and thunderstorm.

50,000 dwellings, half of which are thatched houses, were partially or completely damaged after wind speeds reached a maximum of 100 km/h. Around 100 education institutions were damaged. The strong wind associated with rain caused damages to standing crops. Road links among different districts also remained suspended for the first ten hours as the uprooted trees remained on the roads. Power and telephone facilities were disrupted.

Household items, including cooking facilities, utensils and food stocks were blown away. As a result, most of the affected population were forced to live in the open air.



Volunteers are assisting the affected people in fixing their house. Photo credit: IFRC

The government of Bangladesh responded swiftly to the situation and allocated 728 metric tons of rice and BDT 3,685,000 (CHF 56,700) as a cash grant. The distribution process also started among the affected population by this time. Injured persons also received medical treatment at neighbouring government hospitals and health centres.

With the support from IFRC, BDRCS deployed 200 Red Crescent Youth (RCY) volunteers in the immediate aftermath of the storm to evacuate people to safer places, such as schools and other public buildings. The volunteers also assisted in fixing damaged houses. A team comprising of BDRCS/IFRC staff members conducted a rapid needs assessment in three affected districts from 15 till 17 April. Unit level officers of neighbouring districts were on stand-by to assist staff and volunteers in the affected districts.

As per the assessment findings, a total of 4,500 households in four districts will be assisted with a package of supplementary food; non-food items (NFIs) and emergency shelter materials. The distribution of the relief packages is expected to be completed by May 2010. BDRCS and IFRC have jointly decided to deploy BDRCS's national disaster response team (NDRT) to assist the respective units in selecting appropriate beneficiaries, distribution of items and monitoring. Procurement of the items is in progress.

The IFRC, on behalf of the BDRCS, would like to thank all donors and partners for their generous support of DREF. Details of all donors can be found at the following URL:

<http://www.ifrc.org/what/disasters/responding/drs/tools/dref/donors.asp>

[<click here to view contact details>](#)

## The situation

The nor'wester that caused havoc in eastern India on the night of 14 April 2010 also hit bordering districts of Bangladesh - Dinajpur, Rangpur, Nilphamari, Lalmonirhat and Kurigram. Some adjacent districts including Gaibandha, Sirjaganj and Bogra were also got affected. Local administration sources confirmed that eight people were killed and more than 200 people were injured in the tropical storm.

Following the report from the local administration team, respective BDRCS branches, and the media, at least 50,000 dwellings, half of which are thatched houses, were partially or completely damaged. The strong winds and rain also caused damage to crops and trees. Several thousand of trees were uprooted, then communication was disrupted, and there were power cuts in some places when the storm toppled a number of electric poles causing most of the affected areas. According to the local agricultural department crops of tens of thousands of hectares were destroyed in the affected districts due to the storm.

Dinajpur agriculture extension department reported that maize from 4,000 hectares of land was damaged due to the nor'wester. Thousands of mangos and litchi trees in different upazilas of the district were badly damaged. Crops, particularly maize, were damaged in Lalmonirhat.

The storm accompanied by hail caused heavy damage to crops, especially maize and boro rice in Kishoreganj upazila of Nilphamari. As a result, poor farmers will face seed scarcity during the next planting season. In addition, around 100 education institutions were damaged -- which leads to the temporary suspension of academic activities.

Household items, including cooking facilities, utensils, and food stocks were blown away. This adds insult to injury for women who are already in a state of deep despair as they struggle to feed their families.

Some of the affected population are still living in the open air in makeshift shelters on the sites of their original homes. Rainfall on the morning of 17 April in some areas further exacerbated the misery of those, currently without adequate shelter.

The government of Bangladesh allocated 728 metric ton rice and BDT 3,685,000 (CHF 56,700) as cash grants among the affected people. District and sub-district government hospitals and health centres provided health care support to the injured people.

BDRCS and IFRC reviewed the stock of non-food items (NFIs) available for distribution among the beneficiary families. All respective BDRCS units mobilized volunteers for beneficiaries' selection. BDRCS

has already mobilized four national disaster response team (NDRT) members for assisting the targeted units in relief operation.

## Coordination and partnerships

BDRCS local units coordinated with local authorities in terms of exchanging information on the damage and needs of the affected population and to learn about the response of the government. BDRCS/IFRC communicated with traditional partners, including the European Commission's Humanitarian Aid department (European Commission). For possible support BDRCS and IFRC reviewed the stock of NFIs available for dispatch to the affected districts. BDRCS is an active member of the disaster emergency response (DER) group, chaired by the ministry of food and disaster management. Through this group information and operational updates have been shared with other humanitarian agencies and government departments to avoid any possible overlapping of assistance.

## Red Cross and Red Crescent action

With support from IFRC, BDRCS deployed 200 RCY volunteers in the immediate aftermath of the storm to evacuate people to safer places, such as schools and other public buildings. Volunteers also assisted people in fixing damaged houses. A joint BDRCS and IFRC assessment team conducted a rapid needs assessment of the area from 15 till 17 April. BDRCS mobilized its fleet, warehouse, and logistics resources to despatch relief items from its central warehouse in Dhaka. Unit level officers (ULO) of neighbouring districts were on stand-by to assist staff and volunteers in the affected districts.

NDRT members were on alert to be deployed in the affected districts. As per the decision jointly made by the BDRCS and IFRC, four NDRT members were mobilized to assist respective units in the relief operation. Currently unit volunteers are conducting assessment for selecting beneficiaries.

## Progress towards objectives

### Relief distributions (food, basic non-food items and emergency shelter materials)

#### Objective 1:

4,500 severely affected families or 22,500 people in four districts will receive a package of supplementary food (15 days ration for a five member family), NFIs and emergency shelter materials. Each family will get the following items in a single distribution:

**Food items** -20kg rice, five kg dahl (lentils), two litre edible oil, and one kg iodized salt.

**NFIs**- one piece of (pc) saree, one pc lungi and one water jerry can.

**Emergency shelter materials** - one pc tarpaulin, one pc plastic sheet, one kg rope and 250 gm of wire.

**Progress:** Several meetings were held between BDRCS and IFRC's Disaster Management (DM) team to finalize the distribution plan. BDRCS has already issued the official order to four units forming the criteria for the selection of beneficiaries. Accordingly, units have started initial assessments for selecting beneficiaries. The list of beneficiaries will be finalized and verified with the assistance of the NDRT.

BDRCS has also mobilized four NDRT members for assisting the units in distribution and monitoring. NDRT members will assist the respective unit in the beneficiary selection process as well as in distribution of items. The NDRT members will be deployed in the field from 28 April, 2010. In addition, IFRC will send two field monitoring officers to work together with NDRT and the unit team.

The procurement of food items and NFIs (i.e. plastic sheets, rope and wire), is in progress and rest of the items in the package (i.e. saree, lungi, water jerry cans and tarpaulins), will be borrowed from BDRCS/IFRC NFIs stock. This stock will be replenished later. Food items and some NFIs are expected to be delivered and ready for distribution after quality inspection in the third week of May. (See following table).

**Table: PoA-distribution of items and replenishment of NFIs**

Activity	Time frame					Remarks
	April	May	June	Jul	Aug	
Rapid assessment						Done
Mobilization of unit volunteers for selection of beneficiaries						Done
Mobilization of NDRT						Done
Procurement of FI and some NFI						In progress, completed by 2 <sup>nd</sup> week of May
Selection and registration of beneficiary families						
Distribution of items						
Replenishment of NFIs						
Reporting/updates	<i>Update</i>	<i>Update</i>		<i>Update</i>		Final report in November

## How we work

All International Federation assistance seeks to adhere to the [Code of Conduct for the International Red Cross and Red Crescent Movement and Non-Governmental Organizations \(NGO's\) in Disaster Relief](#) and is committed to the [Humanitarian Charter and Minimum Standards in Disaster Response](#) (Sphere) in delivering assistance to the most vulnerable.

The International Federation's activities are aligned with its Global Agenda, which sets out four broad goals to meet the Federation's mission to "improve the lives of vulnerable people by mobilizing the power of humanity".

### Global Agenda Goals:

- Reduce the numbers of deaths, injuries and impact from disasters.
- Reduce the number of deaths, illnesses and impact from diseases and public health emergencies.
- Increase local community, civil society and Red Cross Red Crescent capacity to address the most urgent situations of vulnerability.
- Reduce intolerance, discrimination and social exclusion and promote respect for diversity and human dignity.

## Contact information

**For further information specifically related to this operation please contact:**

### Bangladesh Red Crescent Society:

- Capt. (Retd.) Abu Bakar, (Secretary General); Email: [bdrcc@bangla.net](mailto:bdrcc@bangla.net) phone; +8802 935 2226.

### IFRC Bangladesh Delegation:

- Mr. Udaya Kumar Regmi, Head of Delegation; email: [udaya.regmi@ifrc.org](mailto:udaya.regmi@ifrc.org) ; phone; +88 02 9337314, fax: + 8802 934 1631

### IFRC South Asia Regional Office, in India:

- Mr. Azmat Ullah. Head of regional office, email: [azmat.ullah@ifrc.org](mailto:azmat.ullah@ifrc.org) , phone: +91 11 2411 1122, fax: +91 11 2411 1128

### IFRC Asia Pacific Zone Office, in Malaysia:

- Jagan Chapagain, Deputy Head of Zone, email: [jagan.chapagain@ifrc.org](mailto:jagan.chapagain@ifrc.org) Phone +60392075700
- Penny Elghady, Resources Mobilization and Planning, Monitoring, Evaluation and Reporting, Coordinator, email: [penny.elghady@ifrc.org](mailto:penny.elghady@ifrc.org) , phone +603 9207 5775
- Elzat Mamutalieva, Operations Coordinator for the Disaster Management Unit phone: +603 9 2075727; mobile: +6019 27 44 960, email: [elzat.mamutalieva@ifrc.org](mailto:elzat.mamutalieva@ifrc.org)

[<click here to return to the title page>](#)

Bangladesh : Tropical storm

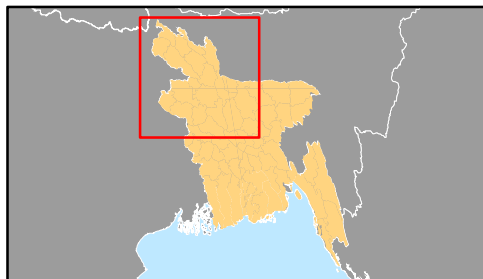
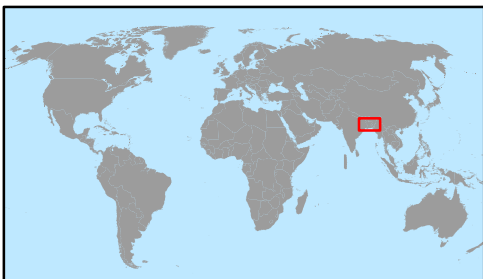
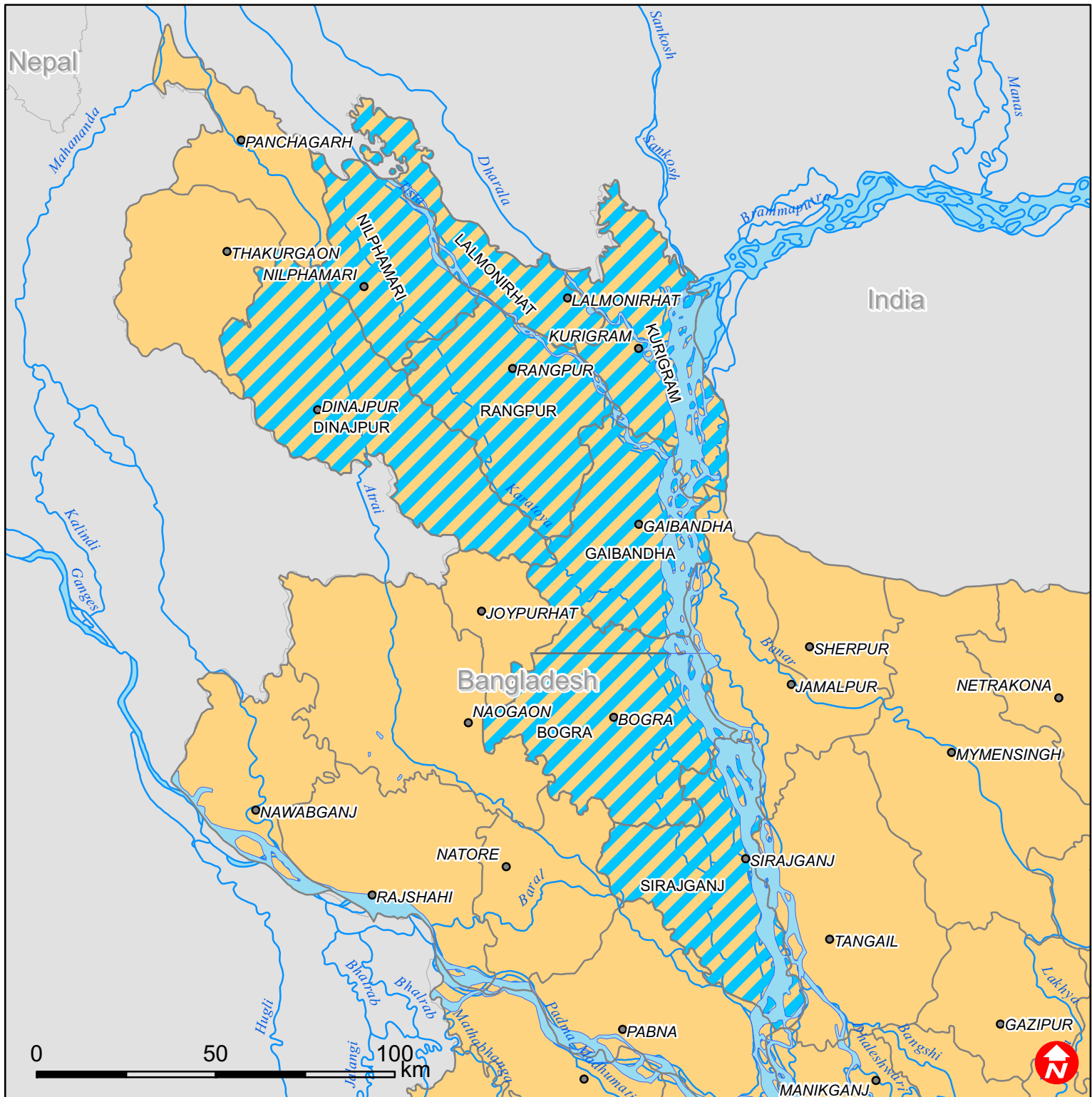
MDRBD006

**DREF BUDGET SUMMARY**

Budget Group	TOTAL BUDGET CHF
Shelter - Relief	102,857
Clothing & Textiles	33,571
Food	90,714
<b>Total Supplies</b>	<b>227,142</b>
Storage	794
Dsitribution & Monitoring	12,698
Transport & Vehicle Costs	5,556
<b>Total Transport &amp; Storage</b>	<b>19,048</b>
Travel	1,270
Office Costs	1,905
Communications	952
Financial Charges	508
<b>Total General Expenditure</b>	<b>4,635</b>
Program Support	16,304
<b>Total Programme Support</b>	<b>16,304</b>
<b>TOTAL BUDGET</b>	<b>267,129</b>



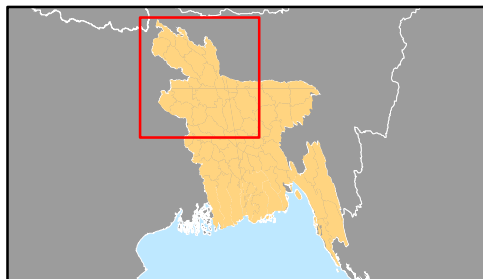
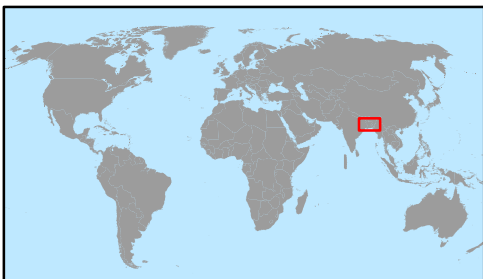
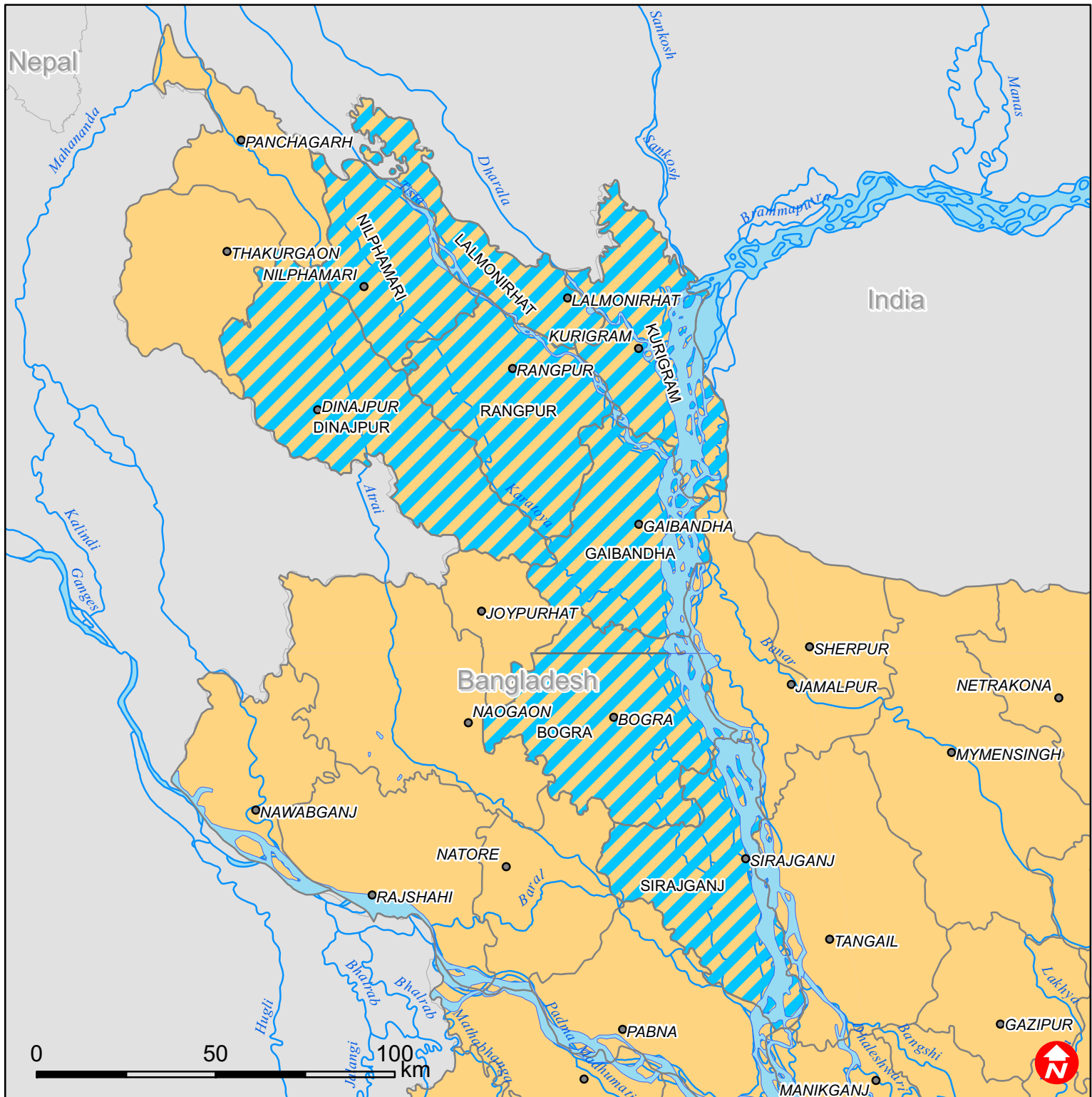
# Bangladesh: Local storm



 Affected districts



# Bangladesh: Local storm



 Affected districts