

# DREF operation



International Federation  
of Red Cross and Red Crescent Societies

## Burundi: Cibitoke Flood

DREF operation n° MDRBI004

GLIDE n° FL-2010-0000057-  
BDI

17 March 2010

The International Federation's Disaster Relief Emergency Fund (DREF) is a source of un-earmarked money created by the Federation in 1985 to ensure that immediate financial support is available for Red Cross and Red Crescent emergency response. The DREF is a vital part of the International Federation's disaster response system and increases the ability of National Societies to respond to disasters.

**CHF 53,230 (USD 50,217 or EUR 36,459) has been allocated from the Federation's Disaster Relief Emergency Fund (DREF) to support the National Society in delivering immediate assistance to some 990 beneficiaries. Unearmarked funds to repay DREF are encouraged.**

**Summary:** Heavy rains were experienced in the western region of Burundi in February 2010 and subsequent flooding afterwards affected several areas of Cibitoke and Bujumbura Rural Provinces where an estimated 198 families (990 people) had their houses damaged. Burundi Red Cross Society (BRCS) Brigade Teams in collaboration with Civil Protection and United Nations Children's Fund (UNICEF) carried out an assessment to determine the needs of the affected families. Non-food items (NFIs) such as shelter and seeds were determined as the immediate needs of the families affected by the floods.

The proposed programme for relief and early recovery includes distribution of basic shelter and NFIs, provision of mosquito nets to pregnant mothers and children under 5 years and distribution of seeds to enable families to replant crops during the current rains.

This operation is expected to be implemented over 3 months, and will therefore be completed by 15 June 2010; a Final Report will be made available 3 months after the end of the operation by 15 September 2010.

[\*<click here for the DREF budget, here for contact details or here to view the map of the affected area>\*](#)

## The situation

Since February 2010 heavy rains and hail storms have been falling in the western region of Burundi and subsequent flooding affected several areas of Cibitoke and Bujumbura Rural Provinces where an estimated 198 families (990 people) had their houses damaged and 2,938 hectares of crops (rice, beans, cassava and potatoes) destroyed.

The BRCS has been working with branch team leaders, Emergency Brigade Teams in collaboration with local authorities in assessing the damage caused by floods and provision of humanitarian assistance to the most affected households.

In Cibitoke province, the situation has not changed since the flooding, families are still displaced from their homes and are temporarily being housed by neighbors and relatives.

## Coordination and partnerships

This operation will be implemented by the BRCS in collaboration with Partner National Societies (PNSs) working in Burundi. The DREF is intended to assist the BRCS to make a rapid response. Regular contact with the Disaster Management Coordinator in the Eastern Africa Regional office will be maintained to ensure the full involvement of the International Federation of Red Cross and Red Crescent Societies in the operation.

## Red Cross and Red Crescent action

The Disaster Management department in collaboration with disaster management branch of Cibitoke have mobilized their emergency brigade teams for a rapid assessment of the situation in all areas.

### The needs

The initial assessments by the emergency brigade teams have produced the following analysis of needs in each households affected (see table 1 and 2 below).

#### CIBITOKE

**Table 1: Needs in terms of seeds**

SEEDS AND VEGETABLES	CIBITOKE (198H/H)
Sweet potatoes (1,000pcs/H/H)	198,000
Beans (10 Kg/H/H)	1,980
Maize (20Kg/H/H)	3,960
Banana - young plants (20pcs/H/H)	3,960
Cassava mosaic resistant (400pces/H/H)	79,200
Vegetable Seeds (10/Grs/H/H)	1,980

**Table 2: Needs in terms of NFI**

RELIEF ITEMS	CIBITOKE (198H/H)
Blankets (3/H/H)	594
Jerry cans (2/ H/H)	396
Plastic sheetings (2/ H/H)	396
Soaps(100grs) 8Pcs/H/H	1,584
Cooking sets (1/H/H)	198
Mosquito nets (3/H/H)	594
Hoes (3/H/H)	594
Clothes for women (3/H/H)	594
Bags (1/H/H)	198
Mats (3/H/H)	594

#### Beneficiary selection

From the preliminary analysis above the BRCS has identified a total of 198 households who are in urgent need of assistance of seeds and NFIs.

## The proposed operation

Relief distributions (food and basic non-food items)
<b>Objective: Objective 1: Contribute to the protection of livelihoods of the most affected households through distribution of beans, maize, sweet potato, cassava, banana and vegetables seeds for planting and harvest.</b>
<b>Activities planned:</b> <ul style="list-style-type: none"><li>• Identification and targeting of the most vulnerable households.</li><li>• Purchase and transportation of relevant seeds to the affected provinces.</li><li>• Mobilization and training of volunteers on distribution and proper planting techniques for various seeds and seedlings.</li><li>• Organization of seed and seedling distribution.</li></ul>
<b>Objective 2: Contribute to the provision of the NFI for 990 beneficiaries from the most affected households.</b>
<b>Activities planned:</b> <ul style="list-style-type: none"><li>• Identification and targeting of the most vulnerable households.</li><li>• Purchase and transportation of NFI to Cibitoke.</li><li>• Mobilization and training of volunteers on NFI distribution.</li><li>• Organization of NFI distribution in the Cibitoke province.</li><li>• Organization of the post distribution monitoring (PDM).</li></ul>

How we work	
<i>All International Federation assistance seeks to adhere to the <a href="#">Code of Conduct for the International Red Cross and Red Crescent Movement and Non-Governmental Organizations (NGO's) in Disaster Relief</a> and is committed to the <a href="#">Humanitarian Charter and Minimum Standards in Disaster Response (Sphere)</a> in delivering assistance to the most vulnerable.</i>	
The International Federation's vision is to inspire, encourage, facilitate and promote at all times all forms of humanitarian activities by National Societies, with a view to preventing and alleviating human suffering, and thereby contributing to the maintenance and promotion of human dignity and peace in the world.	The International Federation's work is guided by <a href="#">Strategy 2020</a> which puts forward three strategic aims: <ol style="list-style-type: none"><li>1. Save lives, protect livelihoods, and strengthen recovery from disaster and crises.</li><li>2. Enable healthy and safe living.</li><li>3. Promote social inclusion and a culture of non-violence and peace.</li></ol>

Contact information
<b>For further information specifically related to this operation please contact:</b> <ul style="list-style-type: none"><li>• <b>In Burundi:</b> Burundi Red Cross Society (Katiyunguruza Anselme, Secretary General), phone: +257.21.62.46; fax: +257.21.11.01; email: <a href="mailto:katiyunguruza.anselme@croixrouge.bi">katiyunguruza.anselme@croixrouge.bi</a></li><li>• <b>In Kenya:</b> Eastern Africa Regional Office (Nancy Balfour, Disaster Management Coordinator, Eastern Africa, Nairobi), phone: +254.20.283.5208; Fax: + 254.20.271.2777; email: <a href="mailto:nancy.balfour@ifrc.org">nancy.balfour@ifrc.org</a></li><li>• <b>In Kenya:</b> Eastern Africa Regional Office (Dennis Johnson, Acting Regional Representative, Eastern Africa, Nairobi), phone: +254.20.283.5124; fax: 254.20.271.27.77; email: <a href="mailto:dennis.johnson@ifrc.org">dennis.johnson@ifrc.org</a></li><li>• <b>In Geneva:</b> Pablo Medina, Operations Advisor; phone: +41.22.730.43.81; fax: +41 22 733 0395; email: <a href="mailto:pablo.medina@ifrc.org">pablo.medina@ifrc.org</a></li></ul>

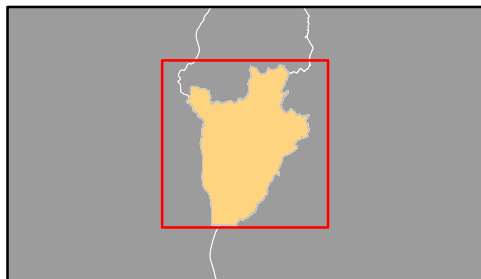
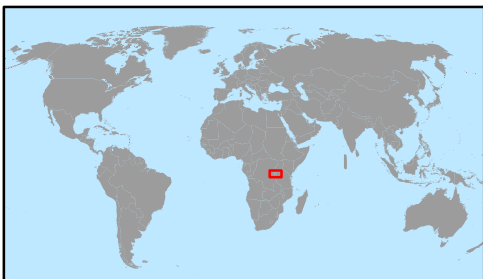
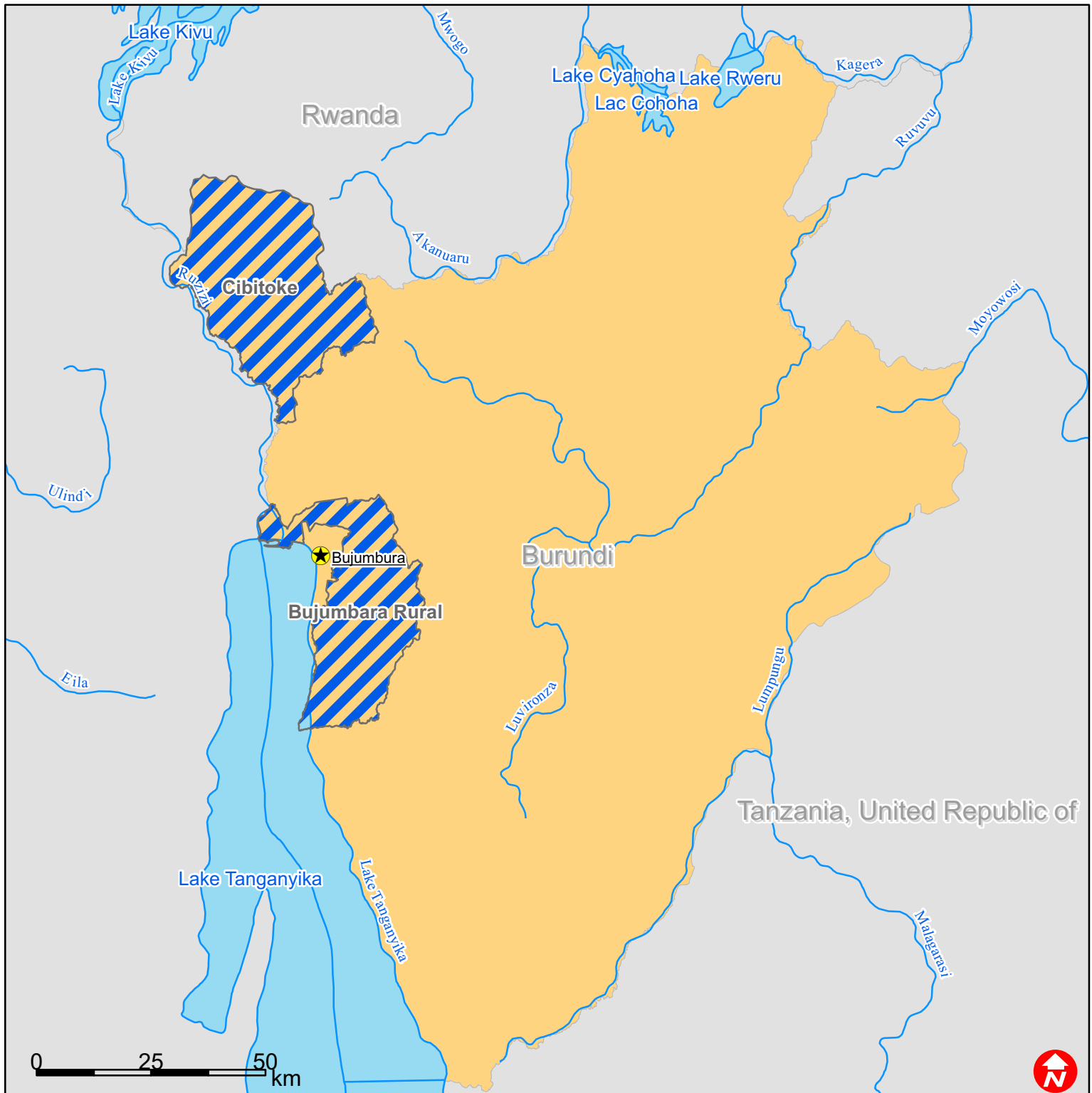
[<DREF budget and map below; click here to return to the title page>](#)

DREF NUMBER		DREF NAME		Date: 17 March 2010	
MDRBI004		Burundi – Cibitoke Flood			
BUDGET SUMMARY					
Budget Group			DREF Grant Budget	TOTAL CHF	BUDGET
500	Shelter - Relief		10,962		10,962
501	Shelter - Transitional		0		0
502	Construction - Housing		0		0
503	Construction - Facilities / Infrastructure		0		0
505	Construction - Materials		0		0
510	Clothing and Textiles		11,701		11,701
520	Food		0		0
523	Seeds and Plants		5,218		5,218
530	Water and Sanitation		3,480		3,480
540	Medical and First Aid		750		750
550	Teaching Materials		0		0
560	Utensils and Tools		9,581		9,581
570	Other Supplies and Services and Cash Disbursements		0		0
<b>Total Supplies</b>			<b>41,692</b>		<b>41,692</b>
580	Land and Buildings		0		0
581	Vehicles		0		0
582	Computer and Telecom		0		0
584	Office/Household Furniture and Equipment		0		0
587	Medical Equipment		0		0
589	Other Machinery and Equipment		0		0
<b>Total Land, vehicles and equipment</b>			<b>0</b>		<b>0</b>
590	Storage		350		350
592	Distribution and Monitoring		1,200		1,200
593	Transport and Vehicle Costs		2,400		2,400
<b>Total Transport and Storage</b>			<b>3,950</b>		<b>3,950</b>
600	International Staff		0		0
640	Regionally Deployed Staff		900		900
661	National Staff		0		0
662	National Society Staff		1,440		1,440
669	Other Staff benefits		0		0
670	Consultants		0		0
<b>Total Personnel</b>			<b>2,340</b>		<b>2,340</b>
680	Workshops and Training		0		0
<b>Total Workshops and Training</b>			<b>0</b>		<b>0</b>
700	Travel		750		750
710	Information and Public Relation		0		0
730	Office Costs		1,000		1,000
740	Communications		250		250
750	Professional Fees		0		0
760	Financial Charges		0		0
790	Other General Expenses		0		0
<b>Total General Expenditure</b>			<b>2,000</b>		<b>2,000</b>
830	Cash Transfers to National Societies				
831	Cash Transfers to 3rd parties				
<b>Total Contributions and Transfers</b>					
599	Program Support		3,249		3,249

<b>Total Programme Support</b>		<b>3,249</b>	<b>3,249</b>
594	Services & Recoveries		
799	Shared Services		
<b>Total Services</b>			
<b>TOTAL BUDGET</b>		<b>53,231</b>	<b>53,231</b>



# Burundi: Flood



 Affected provinces