

# DREF operation



International Federation  
of Red Cross and Red Crescent Societies

## Indonesia: Sinabung Volcano Eruption

DREF operation n° MDRID005  
GLIDE n° VO-2010-000170-IDN

3 September 2010

The International Federation of Red Cross and Red Crescent (IFRC) Disaster Relief Emergency Fund (DREF) is a source of un-earmarked money created by the Federation in 1985 to ensure that immediate financial support is available for Red Cross and Red Crescent emergency response. The DREF is a vital part of the International Federation's disaster response system and increases the ability of National Societies to respond to disasters.

**CHF 143,243 (USD 141,096 or EUR 109,883) has been allocated from the International Federation's Disaster Relief Emergency Fund (DREF) to support the National Society in delivering immediate assistance to some 5,000 beneficiaries. Unearmarked funds to repay DREF are encouraged.**

**Summary:** Located in Karo district, North Sumatra province, Mt Sinabung has so far erupted three times. These eruptions have caused some 28,756 people to be displaced according to the National Disaster Management Agency (NDMA). While the displaced were advised they could go back home, many are still fearful of a potential eruption. To date, no damages were

reported but people preferred to remain in safer places like community halls. Palang Merah Indonesia (PMI/Indonesian Red Cross) continues to support the affected people through field kitchens, health service, water and sanitation and psycho-social support programme in the camps.



A SATGANA volunteer is preparing the water and sanitation equipments to set two water tanks in jambur Pulungan, Kabanjahe city on 2 September. Photo: Palang Merah Indonesia/Indonesian Red Cross.

This operation is expected to be implemented over three months, and will therefore be completed by 30 November 2010; a Final Report will be made available three months after the end of the operation (by 28 February 2011).

[<click here for the DREF budget; here for contact details; here to view the map of the affected area>](#)

## The situation

Sinabung volcano, located in Tanah Karo, North Sumatra province, has been registering activity since 27 August. The first eruption took place on 29 August at 00.08am, followed by a second on 30 August at 06.30am. At approximately 4:45 a.m. local time on 3 September, Mount Sinabung erupted again for the third time. This was the latest activity and stronger than two previous eruptions. The Medan-based volcanology and geological disaster mitigation department stated there had been 'energy piling' after the last eruption on Monday.

Some displaced people were leaving the refugees camps the day before. After the eruption with thundering and shocks were heard and felt, the residents have come back to the refugee camps which have increased from 20 to 22 camps. There were 19,698 displaced people by 2 September. It is estimated that the number has increased though no casualties have been reported.

## Coordination, partnerships and action of other agencies

The International Federation of Red Cross and Red Crescent Societies (IFRC) and Palang Merah Indonesia (PMI/Indonesian Red Cross) will work and conduct all activities under this programme in collaboration with other agencies that may also be planning on supporting communities in these same locations. PMI is already a key participant and informant in the government-led coordination system and is also a member of the interagency assessment team since the onset of this disaster. PMI is also an active partner in the national disaster response network that coordinates emergency responses between the government ministries, forces, private sector, UN and non-governmental organisation agencies.

Following is a short overview of activities to date by other agencies to the Sinabung volcano eruption:

- In response to the Sinabung volcano eruption, the Indonesian government through *Badan Nasional Penanggulangan Bencana* (BNPB/National Disaster Management Agency) has allocated IDR 15 billion (CHF 1.69 million or USD 1.67 million) to deal with the internally displaced people (IDP) camps in Karo district. This fund will be used for food and drugs as needed and also to ensure security in all affected areas. In addition to this, BNPB has distributed 1,000 blankets, 1,000 sleeping mats, and 500 family tents.
- The local government has allocated 50 tonnes of rice, 14,000 cans of fish, one water truck, 1,000 bottles of ketchup, 240 kg of instant noodles, 500 blankets, 50 family tents, 200 sleeping mats, oxygen bottles/tubes for emergency, 5,000 packs of vitamin C and B6.
- In addition to the local government, the Ministry of Health has also distributed 36,000 masks and 2,000 units of trash bins. The Social Department has established a public kitchen in four IDP camps. Meanwhile, health services are being provided by the Provincial District Health Office of North Sumatra. The Ministry of Transportation has requested to all transportation agencies (airways and land transportation) to prioritize delivery of goods and people to support the Sinabung Emergency Operation. The Ministry of Public Work will try to address the need of latrines and bathing by mobilizing watsan equipments and tools from North Sumatra, and also from Jakarta, Padang, and Aceh if required.
- The local military forces (TNI and POLRI) have mobilized 486 personnel and 378 personnel respectively to help provide security and protection of the displaced families homes, live stock, crops and belongings which they left at their houses and villages.

## Red Cross and Red Crescent action

PMI continues to support the affected communities. There are 42 volunteers are active in the field. Field kitchens have provided meals operated by PMI volunteers together with the community. For water and sanitation need, PMI is planning to set water tanks in Guru Pulungan community hall (*jambur*). The mobile clinic has been temporarily terminated while waiting for more medicine supply. However, three medical personnel from PMI in Langkat district keeps the health service going in coordination with local authority. In the meantime, the psycho-social support programme (PSP) team has coordinated with the head of villages conducting creative expressive through playing and singing with children in the refugees camps.

To date, the assessment activity is ongoing to identify the needs. Some people have diarrhoea and upset stomach thus, they also need medical personnel, aside from sleeping mats, baby kits and women's needs as well as trash bins.

More plans on the response are set, such as setting field kitchen, locating ten units of trash bins and keeping the health services in Jambur Guru Pulungan going. The PSP team is still focusing on the children in the

camps. Meanwhile, the volunteers are doing assessments on the aid distribution to support the logistics team in distributing the relief items.

## The needs

As of 3 Sept 2010, according to BNPB, as many as 27,472 displaced people from eight sub-districts have been evacuated and are living in 20 refugee camps. As these people are displaced in a short period, there is an urgent need to provide emergency relief and assistance in order to improve the health and hygiene status of those displaced families.

## The proposed operation

The operation will provide immediate relief and assistance for evacuated families sheltered under the evacuation halls. Funds will be prioritized for the provision of non-food and food items, and the replenishment of stock already distributed from PMI warehouses for potential disasters like this one.

PMI will support 5,000 vulnerable people mainly from the following sub-districts:

1. Naman Teran
2. Sinpang Empat
3. Payung
4. Tiganderket

PMI have been leading the joint agency assessment activities in many of the 22 displaced camps and other shelter locations which presently house more than 27,000 individuals. Although relief is being provided by the government to some of these displaced there are still many individuals that have not yet been provided even the minimal relief items. PMI have exhausted their contingency stocks in an effort to cover some of these needs. They have identified at least 5,000 beneficiaries that still require urgent relief items which include:

- face masks;
- hygiene kits;
- water and sanitation materials (e.g. Jerry cans, brooms, buckets, mops, cleaning liquids etc);
- blankets;
- rope;
- plastic sheeting;
- sleeping mat;
- baby kits;
- other identified and necessary relief items not being supplied by other agencies.

### Relief distributions

**Outcome: To provide 5,000 most affected and displaced people affected by the Sinabung volcano eruption with essential non-food items to meet their immediate needs.**

**Expected results:**

5,000 most affected and displaced people affected by the volcano eruption receive non-food assistance.

**Activities planned**

- Identify and register most affected and displaced families based on agreed criteria;
- Distribute non-food items from existing stocks to identified beneficiaries;
- Continuously monitor relief activities and provide reporting on relief distributions;
- Conduct an ongoing assessment of the impact of the flood and review support strategies;
- Conduct an impact evaluation;
- Replenishment of stocks based on approved budgets and IFRC procurement requirement.

### Emergency Food

**Outcome: The psychological disturbance and health risk has been reduced through psychological support and mobile clinics.**

**Expected results:**

Emergency food is provided and where necessary cooked to provide 5,000 displaced people with a daily ration of meals while they remain displaced and sheltered in refuge halls.

**Activities planned:**

- A mobile public kitchen will be operated in locations where families have fled the volcano but have

not received any assistance from the authorities or other relief service;

- Food support will be provided in coordination with other food providers to individuals who have been neglected or where insufficient assistance has been provided.

### **Emergency health**

**Outcome: The psychological disturbance and health risk has been reduced through psychological support and mobile clinics.**

**Expected results:**

Emergency health services rendered to 5000 displaced people.

**Activities planned:**

- Rendering psychosocial support;  
Conducting children activities /games;
- Provision of psychosocial counselling services;
- Conduct support groups for women, elderly and other people that may have been traumatized by this event;
- Mobile public clinic operating for families who have fled the volcano.

### **Water, sanitation, and hygiene promotion**

**Outcome: To assist 5,000 people most affected and displaced people affected by the Sinabung volcano eruption to reduce health risks through improvement in the sanitation environment.**

**Expected results:**

Hygiene environment and facilities improved for the displaced persons.

**Activities planned:**

- Building materials to construct temporary latrines and bathing facilities;
- Cleaning and upkeep of drainage;
- Improvement of rain protection measures;
- Provision of garbage collection facilities.

## How we work

All International Federation assistance seeks to adhere to the [Code of Conduct for the International Red Cross and Red Crescent Movement and Non-Governmental Organizations \(NGOs\) in Disaster Relief](#) and the [Humanitarian Charter and Minimum Standards in Disaster Response \(Sphere\)](#) in delivering assistance to the most vulnerable.

The International Federation's vision is to inspire, encourage, facilitate and promote at all times all forms of humanitarian activities by National Societies, with a view to preventing and alleviating human suffering, and thereby contributing to the maintenance and promotion of human dignity and peace in the world.

The International Federation's work is guided by [Strategy 2020](#) which puts forward three strategic aims:

Save lives, protect livelihoods, and strengthen recovery from disaster and crises.

Enable healthy and safe living.

Promote social inclusion and a culture of non-violence and peace.

## Contact information

**For further information specifically related to this operation please contact:**

Indonesian Red Cross (PMI): Mrs. Aswi R. Nugroho, head of communications division;  
email: [reksaningtyas@yahoo.com](mailto:reksaningtyas@yahoo.com); phone: +62 21 799 2325 ext. 221; fax: +62 21 799 5188

Federation country office in Indonesia: Wayne Ulrich Disaster management coordinator;  
email: [wayne.ulrich@ifrc.org](mailto:wayne.ulrich@ifrc.org) mobile: +62 811 826614, phone: +62 21 7279 3440;  
fax: +62 21 7279 3446

Federation Southeast Asia regional office, Bangkok; phone: +662 661 8201; fax: +662 661 9322:

o Andy McElroy, regional programme coordinator; email: [andy.mcelroy@ifrc.org](mailto:andy.mcelroy@ifrc.org)

Federation Asia Pacific zone office, Kuala Lumpur; fax: +603 2161 0670:

o Jagan Chapagain, deputy head of zone office;

email: [jagan.chapagain@ifrc.org](mailto:jagan.chapagain@ifrc.org); phone: + 603 9207 5700

o Heikki Väättämoinen, operations coordinator, phone: +603 9207 5729,  
mobile: +60 12 2307895; email: [heikki.vaatamoinen@ifrc.org](mailto:heikki.vaatamoinen@ifrc.org)

o Alan Bradbury, resource mobilization and PMER coordinator;  
email: [alan.bradbury@ifrc.org](mailto:alan.bradbury@ifrc.org); phone: +603 9207 5775

Please send pledges of funding to [zonerm.asiapacific@ifrc.org](mailto:zonerm.asiapacific@ifrc.org)

[<DREF budget and map below; click here to return to the title page>](#)

# International Federation of Red Cross and Red Crescent Societies

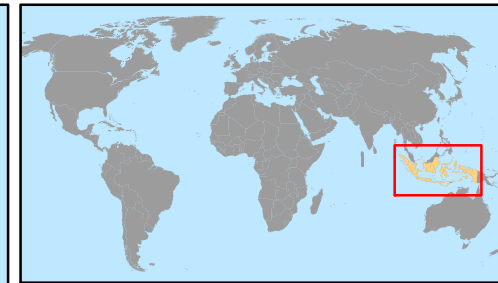
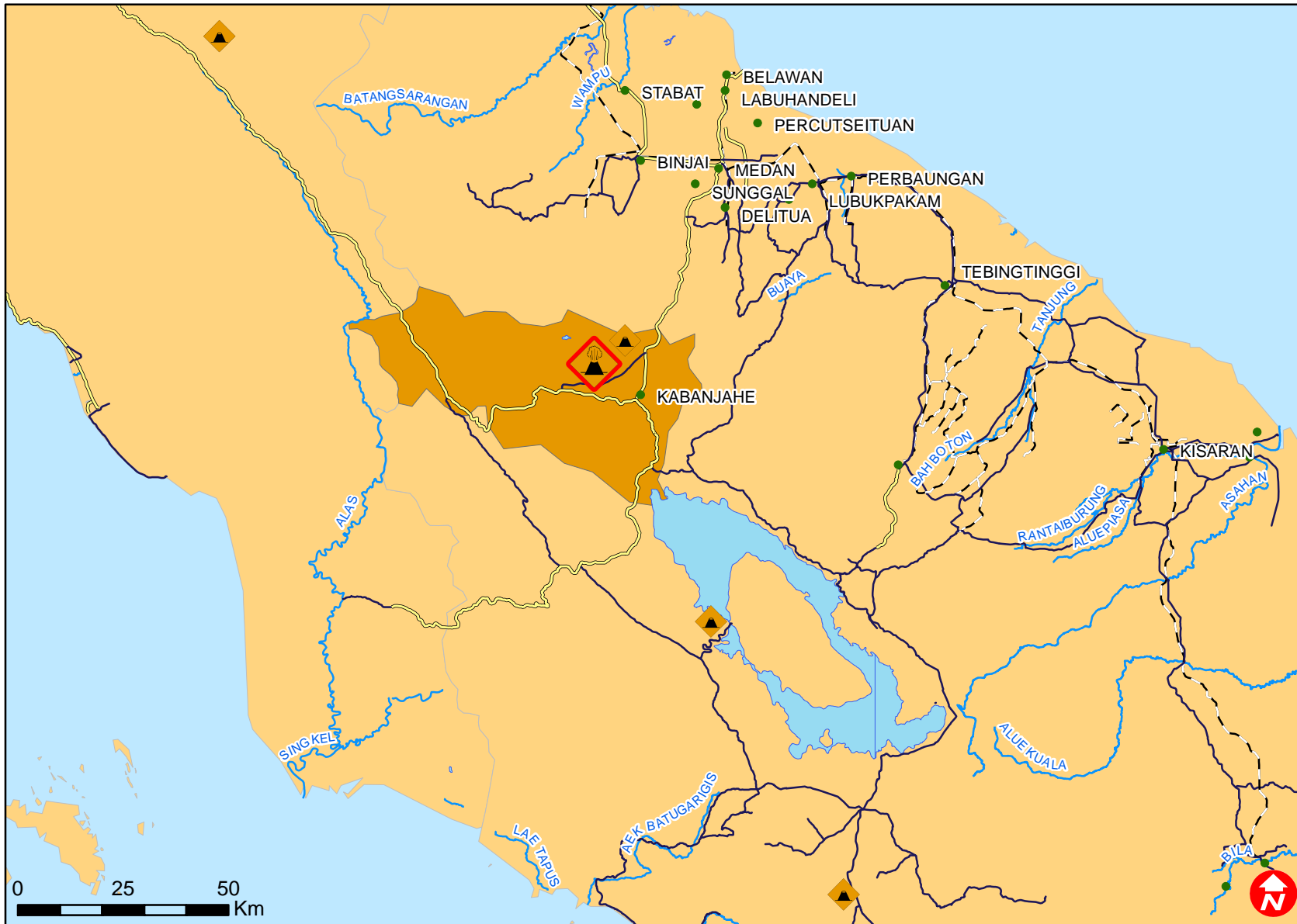
## MDRID005 - INDONESIA SINABUNG VOLCANO ERUPTION



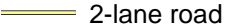



### DREF BUDGET SUMMARY

Budget Group	DREF Grant Budget	TOTAL BUDGET CHF
Food	22,000	22,000
Water & Sanitation	19,000	19,000
Medical & First Aid	13,000	13,000
Teaching Materials	9,500	9,500
Ustensils & Tools	30,000	30,000
Other Supplies & Services & Cash Disbursements	11,000	11,000
<b>Total Supplies</b>	<b>104,500</b>	<b>104,500</b>
Storage	1,650	1,650
Transport & Vehicle Costs	4,000	4,000
<b>Total Transport &amp; Storage</b>	<b>5,650</b>	<b>5,650</b>
National Staff	2,500	2,500
National Society Staff	8,350	8,350
Other Staff benefits	2,500	2,500
<b>Total Personnel</b>	<b>13,350</b>	<b>13,350</b>
Travel	4,500	4,500
Communications	1,500	1,500
Other General Expenses	5,000	5,000
<b>Total General Expenditure</b>	<b>11,000</b>	<b>11,000</b>
Program Support	8,743	8,743
<b>Total Programme Support</b>	<b>8,743</b>	<b>8,743</b>
<b>Total Services</b>	<b>0</b>	<b>0</b>
<b>TOTAL BUDGET</b>	<b>143,243</b>	<b>143,243</b>



# Indonesia: Sinabung Volcano Eruption



-  Mount Sinabung
-  Other volcanoes
-  Cities
-  2-lane road
-  Main road
-  Railroad
-  Karo district