

# DREF operation



International Federation  
of Red Cross and Red Crescent Societies

## Republic of Congo: Chikungunya outbreak in Brazzaville, Pointe Noire and Pool

DREF operation n° MDRCG007  
GLIDE n° EP-2011-000074-COG  
29 June, 2011

The International Federation of Red Cross and Red Crescent (IFRC) Disaster Relief Emergency Fund (DREF) is a source of un-earmarked money created by the Federation in 1985 to ensure that immediate financial support is available for Red Cross and Red Crescent emergency response. The DREF is a vital part of the International Federation's disaster response system and increases the ability of National Societies to respond to disasters.

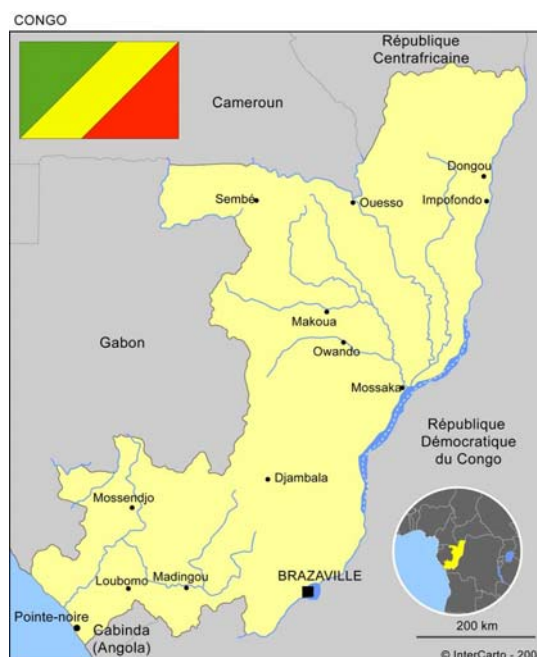
**CHF 292,511 has been allocated from the IFRC's Disaster Relief Emergency Fund (DREF) to support the Congolese Red Cross National Society in delivering immediate assistance to some 1,500,000 beneficiaries, on the basis of 700,000 beneficiaries in Brazzaville, 500,000 in Pointe Noire and 300,000 in Pool. Un-earmarked funds to repay DREF are encouraged.**

**Summary:** A chikungunya outbreak has affected the capital city of Brazzaville, as well as Pointe Noire and Pool divisions since the end of May 2011. By 12 June 2011, about 900 cases were already declared in Brazzaville by the government-led technical committee for the management of epidemics. Out of the 48 samples that were sent to the sub regional reference laboratory in Franceville, Gabon, more than 58% were tested positive with the chikungunya virus. It is the first time that the Republic of Congo has been affected by chikungunya, a disease transmitted by mosquitoes that causes fever, headache, fatigue and muscular and joint pains.

The most affected neighbourhoods are found in the southern and eastern parts of Brazzaville, namely Makelekele, Nganga, Lingolo, Loua, Madibou, Massissia and Mafouta neighbourhoods. About 150 cases have been registered in the 7<sup>th</sup> subdivision of Brazzaville, notably in Mfilou and Mougali (Moukondo) that account for three quarters of the total population of Brazzaville. Government has set up a chikungunya management committee, and patients are followed up at the Makelekele base hospital and in other integrated health centres in the southern and western parts of Brazzaville.

Considering that the Republic of Congo is presently in the dry season, there are fears that unless immediate action is taken, the epidemic will spread rapidly throughout the country. Added disease morbidity will have a very negative effect on the already difficult living conditions of the populations.

With this DREF allocation, the Congolese Red Cross society intends to mobilise 300 skilled volunteers in



the targeted neighbourhoods of Brazzaville, train them and involve them in social mobilisation, hygiene and sanitation, and support to health centres. The volunteers will support their communities in the organization of clean-up campaigns to eliminate mosquito breeding sites. The volunteers will complement a general bed net distribution planned for late July, supporting distribution of 15,000 nets to people with special needs. Volunteers will check that the received mosquito nets are properly installed and that the targeted chikungunya-affected populations have actually received mosquito nets.

The DREF will also enable the National Society to conduct advocacy aimed at stopping the spread of the disease.

This operation is expected to be implemented over 3 months, and will therefore be completed by 30 September, 2011; a Final Report will be made available three months after the end of the operation (by 31<sup>st</sup> December, 2011).

[<click here for the DREF budget; here for contact details; here for a map of the affected area>](#)

## The situation

Since May 2011, the city of Brazzaville and the Goma Tsetse social and health district, as well as the Pointe Noire and Pool divisions are affected by a chikungunya epidemic, which is transmitted by the female mosquitoes of the species *Aedes aegypti* and *Aedes albopictus*. It is believed that the spread of the disease is fuelled by poor hygiene and sanitation conditions. Reports say *Aedes aegypti* spreads easily by aircraft that have not been sprayed with insecticide, thereby further facilitating the spread of the disease.

In Brazzaville, the most affected neighbourhoods are Makelekele, Nganga, Lingolo, Loua, Madibou, Massissia and Mafouta neighbourhoods. About 150 cases have been registered in the 7<sup>th</sup> subdivision of Brazzaville, notably in Mfilou and Mougali (Moukondo) that both have three quarter of the total population of Brazzaville. A few cases have also been registered in the 2<sup>nd</sup> subdivision (Bacongo), and are suspected to have migrated from Makelekele. The northern neighbourhoods of Brazzaville seem to have been spared by the epidemic so far, but a case has been declared in the 5<sup>th</sup> subdivision (Ouenzé) and is believed to have also come from Makelekele. The total population of Brazzaville is estimated at about 1,500,000 inhabitants.

Government has set up a committee to manage the epidemic that is characterized by fever, headache, fatigue and muscular or joint pains.

It should be noted that the chikungunya epidemic first hit neighbouring countries such as Gabon and the Democratic Republic of the Congo (DRC) in 2006, 2007 and 2010.

Government has expressed its worry about the epidemic that is striking during the dry season, a factor that is likely to fuel the spread of the disease and increase the vulnerability of the populations to seasonal flu.

## Coordination and partnerships

Government has set up a committee to respond to the epidemic. This committee is composed of representatives of the Ministry of Public Health (MoPH), the Expanded immunization programme (EIP), the World Health Organization (WHO), the United Nations Children Fund (UNICEF), and the Congolese Red Cross national society.

Anticipated response activities include intensifying the management of people affected by administering drugs, spraying homes and the surroundings, training the health personnel, and sensitizing the populations on chikungunya and telling them what to do to mitigate the risks.

## Red Cross and Red Crescent action

The Congolese Red Cross society is planning to mobilize 300 volunteers in Brazzaville, Pointe Noire and Pool divisions, on the basis of 150 volunteers in the 7 subdivisions of Brazzaville, 100 in Pointe Noire and 50 in Pool. The National Society will then train these 300 volunteers and place them under the coordination of the head of the health and social action of the National Society to provide appropriate support to the MoPH within the framework of the response to the epidemic.

## The needs

Considering that chikungunya is transmitted by mosquitoes, there is an urgent need to distribute long-lasting insecticide-treated mosquito nets (LLITN) to the inhabitants of Brazzaville, Pointe Noire and Pool to help protect them and thus, contribute to stopping the spread of the disease. The most vulnerable 15,000 persons with specific needs (elderly, bedridden patients, those with limited mobility) will receive mosquito nets (15,000 LLITN on the basis of 1 LLITN per person with specific needs). 7,000 LLITN will be distributed in Brazzaville, 5,000 in Pointe Noire and 3,000 in Pool. The primary urgent need is to destroy mosquito breeding places by evacuating stagnant water and spraying both the houses and surroundings. Outreach will also monitor that chikungunya patients in particular are benefiting from interventions and otherwise being cared for.

In order to be able to carry out all these activities, the Congolese Red Cross society will need to recruit and train 300 volunteers in the most affected neighbourhoods, comprising 150 in Brazzaville, 100 in Pointe Noire and 50 in Pool. These volunteers will then have to be equipped with protection materials and other intervention tools such as leaflets, posters and sanitation tools. With these tools, Red Cross volunteers will carry out sanitation activities and sensitize the populations on the need of keeping their environment clean as a way of preventing the spread of chikungunya. Red Cross authorities will also have to advocate for routine sanitation activities to be carried out in the streets of Brazzaville.

In order to ensure smooth coaching of the National Society (NS) within the framework of this operation, a regional resource person, a member of the Regional Disaster Response Team (RDRT) will be deployed to Brazzaville.

## The proposed operation

Emergency health	
<b>Outcome: Contribute to improving the health of the most vulnerable 1,500,000 people that are exposed to chikungunya in Brazzaville, Pointe Noire and Pool for four months.</b>	
Outputs:	Activities planned
<ol style="list-style-type: none"> <li>1. The volunteers of the Congolese Red Cross society have become liaison officers between their communities, the NS and authorities through the management of a chikungunya early alert system.</li> <li>2. The epidemic management capacities of the Congolese Red Cross society are strengthened.</li> </ol>	<ul style="list-style-type: none"> <li>• Recruit 300 volunteers and train them on the techniques of communication for the change of behaviour (CCB) and on chikungunya management.</li> <li>• Set up a chikungunya early alert system and run it.</li> </ul>
<ol style="list-style-type: none"> <li>3. At least 1,500,000 people targeted in Brazzaville, Pointe Noire and Pool know the signs and symptoms of chikungunya and rush to the nearest health centre upon noticing the first alert.</li> </ol>	<ul style="list-style-type: none"> <li>• Purchase working materials and tools.</li> <li>• Carry out door-to-door sensitization on chikungunya using leaflets and posters.</li> <li>• Identify suspected cases of chikungunya and refer them to the nearest health centre.</li> </ul>
<ol style="list-style-type: none"> <li>4. At least 1,500,000 people targeted in Brazzaville, Pointe Noire and Pool practice simple individual and environmental hygiene rules, and know how to destroy mosquito breeding places.</li> </ol>	<ul style="list-style-type: none"> <li>• Establish, train and deploy 20 teams fresheners to help the community in the fight against the vector.</li> <li>• Promote individual and environmental hygiene by sensitizing the populations, destroying mosquito breeding places, evacuating stagnant water, collecting and disposing of garbage, evacuating waste water, cleaning gutters, spraying houses and the surroundings, weeding around houses, and popularizing simple messages on cleanliness.</li> </ul>
<ol style="list-style-type: none"> <li>5. 15,000 persons with specific needs identified as the most vulnerable have</li> </ol>	<ul style="list-style-type: none"> <li>• Identify the people to benefit from the distribution of LLITN (persons with specific</li> </ul>

<p>received LLITN in Brazzaville, Pointe Noire and Pool, and have started using them to prevent the spread of chikungunya.</p>	<p>needs (elderly, bedridden patients, children under 5 and others with limited mobility).</p> <ul style="list-style-type: none"> <li>• Distribute mosquito nets to targeted people.</li> <li>• Show the populations how to install and use the LLITN.</li> <li>• Sensitize the populations to the need of sleeping under LLITN.</li> <li>• Carry out home visits to ensure that the people who received the LLITN are actually using them properly.</li> <li>• Distribute mosquito repellent and other items to people with special needs</li> </ul>
<p>6. The operation is closely monitored and evaluated to draw lessons learned.</p>	<ul style="list-style-type: none"> <li>• The RDRT member deployed to Brazzaville ensures the day-to-day monitoring of the operation.</li> <li>• An evaluation is carried out at the end of the operation.</li> </ul>

## How we work

All IFRC assistance seeks to adhere to the [Code of Conduct for the International Red Cross and Red Crescent Movement and Non-Governmental Organizations \(NGOs\) in Disaster Relief](#) and the [Humanitarian Charter and Minimum Standards in Disaster Response \(Sphere\)](#) in delivering assistance to the most vulnerable.

The IFRC's vision is to inspire, encourage, facilitate and promote at all times all forms of humanitarian activities by National Societies, with a view to preventing and alleviating human suffering, and thereby contributing to the maintenance and promotion of human dignity and peace in the world.

The IFRC's work is guided by Strategy 2020 which puts forward three strategic aims:

1. Save lives, protect livelihoods, and strengthen recovery from disaster and crises.
2. Enable healthy and safe living.
3. Promote social inclusion and a culture of non-violence and peace.

## Contact information

**For further information specifically related to this operation please contact:**

- In Congo: Christian Sédar NDINGA, President, Congolese Red Cross, phone: (Office)+242 057 770 456; (Mobile)+242 066 620 311 email: [president.crcb@cosnac.org](mailto:president.crcb@cosnac.org) or [chrised\\_ndinga@yahoo.fr](mailto:chrised_ndinga@yahoo.fr)
- In Central Africa Region: Denis DUFFAUT, Central Africa Regional Representative, phone: (Office)+237 22 21 74 37; (Mobile)+237 77 11 77 97; Fax: +237 22 21 74 39; email: [denis.duffaut@ifrc.org](mailto:denis.duffaut@ifrc.org)
- In Johannesburg: Alasan SENGHORE, Director for Africa zone, email: [alasan.senghore@ifrc.org](mailto:alasan.senghore@ifrc.org) ; phone +27 11 303 9700; mobile +27 71 872 5111; fax +27 11 884 0230

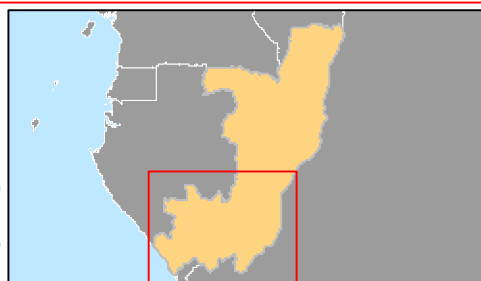
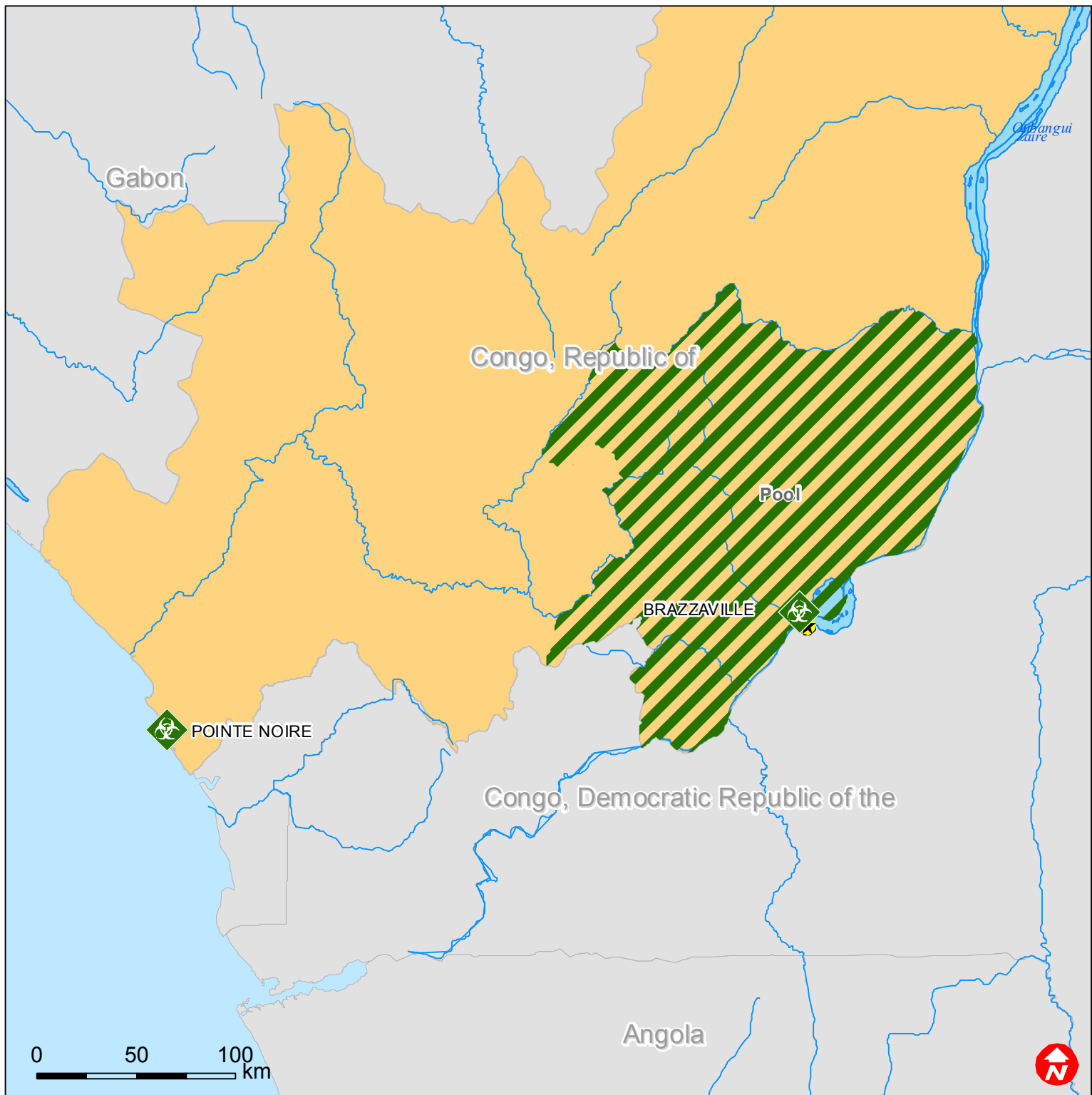
[<DREF budget and map below; click here to return to the title page>](#)



**BUDGET SUMMARY**

Budget Group	DREF Grant Budget	TOTAL BUDGET CHF
Shelter - Relief		0
Shelter - Transitional		0
Construction - Housing		0
Construction - Facilities / Infrastructure		0
Construction - Materials		0
Clothing & Textiles	96,535	96,535
Food		0
Seeds & Plants		0
Water & Sanitation	32,500	32,500
Medical & First Aid	3,960	3,960
IEC Materials	15,277	15,277
Utensils & Tools		0
Other Supplies & Services & Cash Disbursements		0
<b>Total Supplies</b>	<b>148,272</b>	<b>148,272</b>
Land & Buildings		0
Vehicles	4,455	4,455
Computer & Telecom	2,376	2,376
Office/Household Furniture & Equipment		0
Medical Equipment		0
Other Machinery & Equipment		0
<b>Total Land, vehicles &amp; equipment</b>	<b>6,832</b>	<b>6,832</b>
Storage	2,871	2,871
Distribution & Monitoring	990	990
Transport & Vehicle Costs	13,376	13,376
<b>Total Transport &amp; Storage</b>	<b>17,238</b>	<b>17,238</b>
International Staff	4,752	4,752
Regionally Deployed Staff		0
National Staff	39,030	39,030
National Society Staff	8,911	8,911
Other Staff benefits		0
Consultants		0
<b>Total Personnel</b>	<b>52,693</b>	<b>52,693</b>
Workshops & Training	22,921	22,921
<b>Total Workshops &amp; Training</b>	<b>22,921</b>	<b>22,921</b>
Travel	12,248	12,248
Information & Public Relation	6,238	6,238
Office Costs	891	891
Communications	2,376	2,376
Professional Fees		0
Financial Charges	2,970	2,970
Other General Expenses	1,980	1,980
<b>Total General Expenditure</b>	<b>26,703</b>	<b>26,703</b>
Cash Transfers to National Societies		0
Cash Transfers to 3rd parties		0
<b>Total Contributions &amp; Transfers</b>	<b>0</b>	<b>0</b>
Program Support	17,853	17,853
<b>Total Programme Support</b>	<b>17,853</b>	<b>17,853</b>
Services & Recoveries		0
Shared Services		0
<b>Total Services</b>	<b>0</b>	<b>0</b>
<b>TOTAL BUDGET</b>	<b>292,511</b>	<b>292,511</b>



# Republic of Congo: Epidemics



-  Affected municipalities
-  Affected division