

www.ifrc.org
Saving lives,
changing minds.

Disaster relief emergency fund (DREF) Ghana: Floods

 International Federation
of Red Cross and Red Crescent Societies

**DREF operation n° MDRGH004
GLIDE n° FL-2011-000106-GHA
19 August, 2011**

The International Federation of Red Cross and Red Crescent (IFRC) Disaster Relief Emergency Fund (DREF) is a source of un-earmarked money created by the Federation in 1985 to ensure that immediate financial support is available for Red Cross and Red Crescent emergency response. The DREF is a vital part of the International Federation's disaster response system and increases the ability of National Societies to respond to disasters.

CHF 91,510 has been allocated from the IFRC's Disaster Relief Emergency Fund (DREF) to support the Ghana Red Cross Society in delivering immediate assistance to some 2,500 beneficiaries. Un-earmarked funds to repay DREF are encouraged.

Summary: A 10-hour torrential rainfall in Ghana on 20 July, 2011 and the overflow of the Birim River in the Eastern Region have caused heavy flooding in some parts of the country. One Hundred and Thirty communities in 15 districts of the Eastern and Volta Regions were the most affected with 1,875 houses damaged. Nine lives were lost to the floods. Some 872 acres of farmlands have been submerged with crops washed away while some bridges have also been damaged by the floods, thereby making movement of people and goods difficult. Over 45,000 persons have been displaced in 4 regions of Ghana, namely Eastern, Volta, Ashanti and Central –with the Eastern and Volta being the most affected (36,517 persons). The level of the river water was still rising and overflowing, thereby submerging acres of agricultural lands and destroying crops.



Many of the affected persons were trapped with their houses submerged while vehicular movement was disrupted by flood water/photo GRCS

The Government of Ghana through the National Disaster Management Organization (NADMO) has been coordinating with other humanitarian organizations including the Red Cross for evacuation and information dissemination for people in affected areas to move to higher terrain for safety. Many of the affected persons are sheltered in schools, public buildings and houses of community leaders. The Ghana Red Cross Society (GRCS) through its local branches mobilized and deployed its volunteers who have been assisting the affected population in evacuation, First Aid and psychological counselling. The affected persons are in need of food, shelter, non-food relief items (NFIs) and WASH sensitization.

As a result of the extent of the impact of the flood, the humanitarian assistance being provided by the various organizations has not been able to address all the needs of the affected population. Therefore, in the search to fill some identified gaps and further scale up its humanitarian assistance to the affected communities, the GRCS with technical support from the West Coast Regional Representation of the

International Federation has developed a plan of action to support 500 most affected households in the Eastern and Volta Regions with non-food relief items (NFIs), WASH items (blankets, water purification items, mosquito nets, and others). The planned intervention will be supported by the International Federation through its DREF and the deployment of RDRT members whose presence is also expected to enhance the capacity of the affected branches of the national society in emergency relief activities, especially in assessment.

This operation is expected to be implemented over 2 months, and will therefore be completed by October, 2011; a Final Report will be made available three months after the end of the operation (by January, 2011).

[<click here for the DREF budget; here for contact details; here to view a map of the affected area>](#)

The situation

Heavy rains in south Ghana have caused flooding in some parts of the country especially in the Eastern and Volta regions since 20 July 2011. The districts most affected include Akyemmansa, Birim South, Birim Central, Kwaebibirem, Fanteakwa, Kwahu West, Kwahu North, Birim North, Atiwa and West Akyem in the Eastern Region. Over 45,000 people have been affected, several acres of farmlands are inundated and roads including bridges have been washed away thereby making several places inaccessible. The heavy rains have caused landslide near Nkwaben in the Atiwa district of Eastern Region covering several acres of cocoa farms. The floods has made lives uncomfortable for the flood victims since they were compelled to sleep in tents, in houses of local chiefs and in some other public buildings. The floods affected Adankrono, Kade, Akwatia and Boadua in the Kwaebibirem District when the River Birim and four other rivers overflowed their banks destroying property and rendering dozens of people homeless. At Adankrono, the Birim River has flowed more than 500 metres from the toll bridge to the town. At Boadua, the Mmo River also damaged buildings near it and has covered a portion of the road to Toppre mang, which has cut off the community from the outside world. The Abansa, a tributary of the Mmo River, also overflowed its banks at Akwatia and destroyed houses and household effects, especially at Kotokoli Zongo, Kwaladinga and Sadams.



Flooded houses in one of the most affected districts in the Eastern Region/GRCS

Coordination and partnerships

The National Disaster Management Organization (NADMO) is in the field assessing and responding to the situation in collaboration with GRCS volunteers. The District and Municipal Chief Executives and some Government officials have visited the affected areas. The media is sensitizing the population to move to upper lands. Ernest Chemist has donated assorted drugs through NADMO with the Red Cross volunteers assisting administering them to the affected victims. Coordination and emergency meetings are also ongoing with full participation of the GRCS.

Red Cross and Red Crescent action

The Red Cross branches in the two regions have assessed the situation in the affected communities and deployed 80 volunteers in the field. The GRCS has provided tarpaulins and NFI (including mats, jerry cans, mosquito nets, soap and blankets) to 100 affected households. The death toll has reduced due to sensitization of people to move to higher ground by GRCS volunteers. The volunteers are still educating the affected people on WATSAN, as well as evacuation of people and property to higher ground. The volunteers are rendering first aid services in the affected communities and providing psychological support and counseling to the affected people. The Disaster Management Team is also monitoring the situation in the three regions in the north of Ghana. Meanwhile, the Swiss Red Cross in collaboration with the GRCS has planned to support 500 most vulnerable households.

The needs

After a preliminary assessment, the immediate needs of the affected persons include relief items (blankets, mosquito nets, sleeping mats, kitchen sets, buckets, water treatment tablets, jerry cans, and soap or detergents) and children's clothing for protection against bad weather.

Selection of people to be reached: While a comprehensive report on the assessment is being planned, in the meantime, Red Cross will carry out a rapid assessment and vulnerability analysis. It has identified 500 most affected vulnerable households to be prioritized in the Eastern and Volta Regions. These 500 families will benefit from NFIs and WASH support. The criteria for selection include those who lost their houses and most of their belongings; those living in temporary shelter; pregnant women/lactating mothers; and families with children under five years.

The proposed operation

The GRCS has been assisting the affected population in rescue and relief operations. The National Society will be supporting the most affected areas in assessment activities and organize the delivery of immediate relief assistance (basic non-food items) and emergency health for the displaced population for two months. These activities will be carried out with technical support from the West Coast Regional Representation.

A massive campaign will be conducted by the GRCS for water, sanitation and hygiene promotion. The GRCS will mobilize and deploy its network of volunteers under the guidance of a deployed RDRT for needs assessment, registration of affected persons and beneficiaries, distribution of non-food items and sanitation tools.

Relief distributions (food and basic non-food items)	
Outcome: The 500 most affected households have received specific quantity and quality of non-food items based on the assessment and selection criteria from Red Cross.	
Outputs	Activities planned
Relief items are procured and distributed to 500 most affected households and selected through established Red Cross selection criteria.	<ul style="list-style-type: none"> • Procure and distribute 1,000 blankets and 1,000 sleeping mats to 500 most affected households; • Mobilize and brief 50 Red Cross volunteers on registration and distribution strategies of the Red Cross; • Conduct a rapid emergency needs assessment in the target communities; • Control supply movements from point of dispatch to end user; • Monitor and evaluate the relief activities and provide report on distribution of relief items.

Emergency Health	
Outcome: Contribution to the prevention of communicable diseases among 500 most vulnerable households in the two most affected regions.	
Outputs	Activities planned
The risks of communicable diseases are reduced for the most affected communities and the health status of the community is improved.	<ul style="list-style-type: none"> • Procure and distribute 4,000 sachets of ORS to 500 most affected families in the two target regions; • Procure and distribute 1,000 mosquito nets to 500*** most affected families; • Disseminate key messages concerning LLIN use and malaria (targeting pregnant women and caretakers for children under 5); • Provide rapid orientation to 100 volunteers on first aid, health preventive measures on diarrheal and communicable diseases using the ECV Manuals for volunteers; • Provide Information, Education and Communication (IEC) materials for health, and risk reduction sensitization activities; • Conduct health sensitization activities to the

	most affected communities in the two affected regions.
--	--

*** pregnant women, lactating and caretakers for children under 5

Water, sanitation, and hygiene promotion

Outcome: The risks of waterborne diseases are reduced through hygiene promotion, health education and provision of drinking water in target communities in the 2 most affected regions.	
Outputs	Activities planned
500 most affected households in the flooded areas have access to clean water, hygiene and sanitation facilities.	<ul style="list-style-type: none"> • Mobilize and train 100 Red Cross volunteers on good hygiene, water purification method and health promotion; • Procure and distribute 10 cartons of Aquatab and 500 pieces of jerry cans to 500 most affected households; • Procure and distribute 2,000 bars of soap, 500** kitchen sets to the targeted most affected households; • Sensitize the target communities on Household water treatment techniques,, good hygiene and health practices; • Provide first aid services to the affected communities.

** Most vulnerable including aged and women

Communications – Advocacy and Public information

The proposed activities will provide an opportunity for the National Society to demonstrate the added value of its activities to the affected persons, communities, and host government in the event of any flood disaster within the West Coast. Media, especially audio and print will be instrumental for the dissemination of the information to the public for sensitization including usage of drama. The National Society with technical support from the Regional Representation will ensure adequate and effective national and international coverage of the Red Cross intervention.

Contact information

For further information specifically related to this operation please contact:

- **IFRC Regional Representation:** Jerry Niati, Ag. Regional Representative, West Coast, Abuja, Nigeria, office phone; +234 098703924, mobile phone: +234 7034142708, email: niati.jerry@ifrc.org
- **IFRC Zone:** Asha Mohammed, Head of Operations, Africa Zone, Johannesburg, phone: +27 71 876 8745, email: asha.mohammed@ifrc.org
- **In Geneva:** Christine South, Operations Support, Phone: +41.22.730.4529, email: christine.south@ifrc.org
- **Regional Logistics Unit (RLU):**

For Resource Mobilization and Pledges:

- **In IFRC Africa Zone:** Ed Cooper, Resource Mobilization and Performance and Accountability Coordinator; Johannesburg; Phone: Tel: +27.11.303.9700; Email: ed.cooper@ifrc.org

For Performance and Accountability (planning, monitoring, evaluation and reporting)

- **In IFRC Africa Zone:** Robert Ondrusek, PMER/QA Delegate, Johannesburg; Phone: +27.11.303.9700; Email: robert.ondrusek@ifrc.org



[Click here](#)

1. DREF budget [below](#)
 2. Click [here](#) to return to the title page
-

How we work

All IFRC assistance seeks to adhere to the Code of Conduct for the International Red Cross and Red Crescent Movement and Non-Governmental Organizations (NGOs) in Disaster Relief and the Humanitarian Charter and Minimum Standards in Disaster Response (Sphere) in delivering assistance to the most vulnerable.

The IFRC's vision is to inspire, encourage, facilitate and promote at all times all forms of humanitarian activities by National Societies, with a view to preventing and alleviating human suffering, and thereby contributing to the maintenance and promotion of human dignity and peace in the world.

www.ifrc.org
Saving lives, changing minds.



The IFRC's work is guided by Strategy 2020 which puts forward three strategic aims:

1. Save lives, protect livelihoods, and strengthen recovery from disaster and crises.
 2. Enable healthy and safe living.
 3. Promote social inclusion and a culture of non-violence and peace.
-

DREF OPERATION

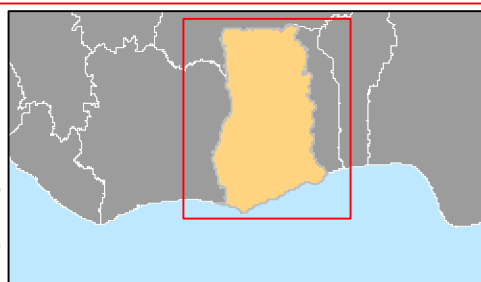
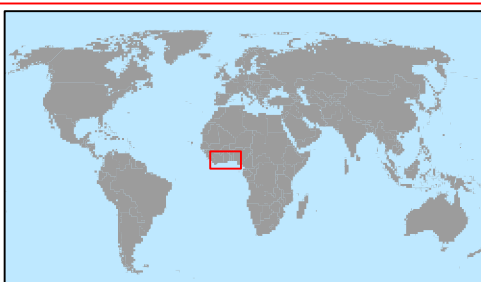
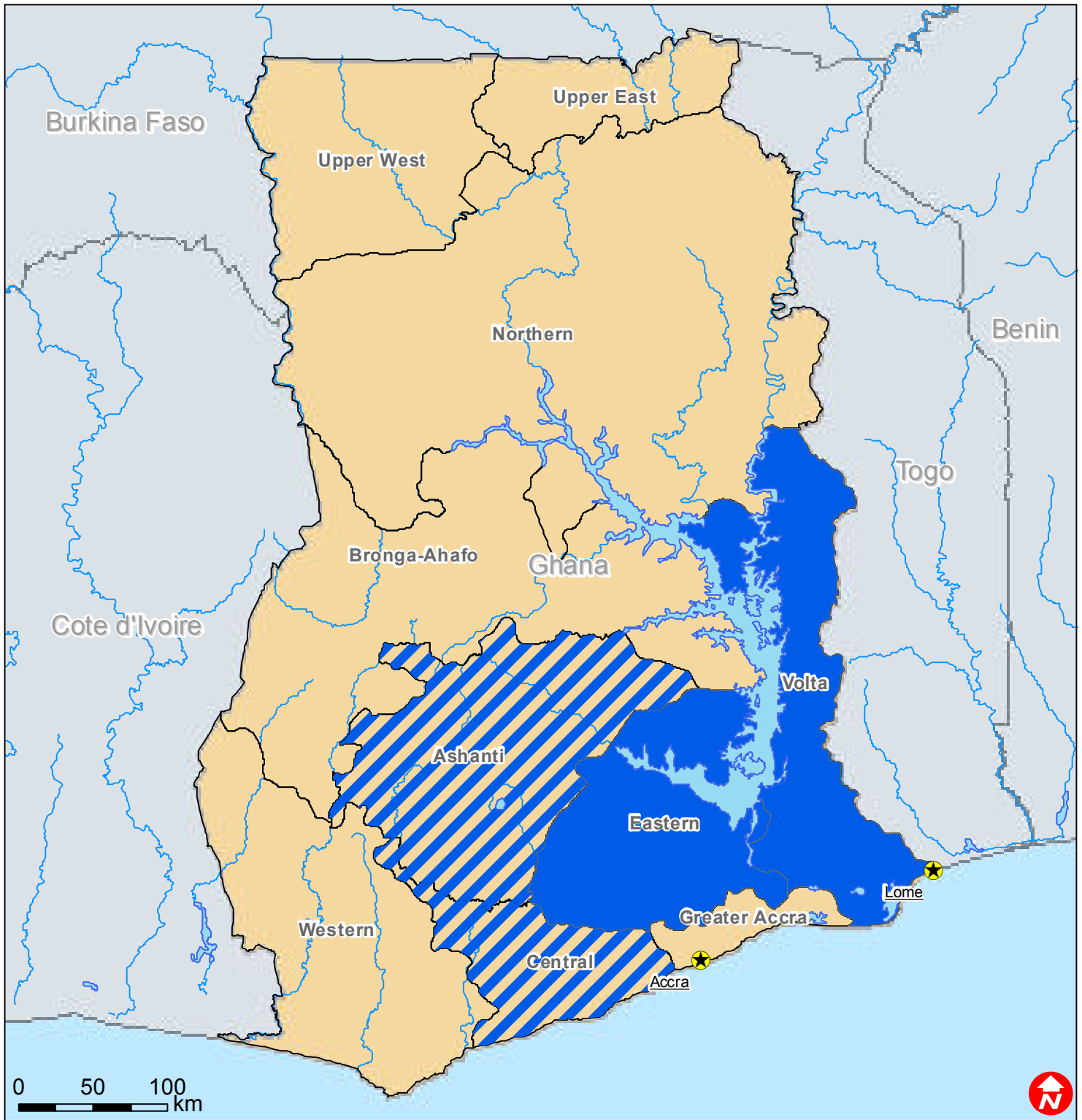
19-08-11



Ghana Flood

Budget Group	DREF Grant Budget CHF
Shelter - Relief	0
Shelter - Transitional	0
Construction - Housing	0
Construction - Facilities	0
Construction - Materials	0
Clothing & Textiles	14,781
Food	0
Seeds & Plants	0
Water, Sanitation & Hygiene	4,500
Medical & First Aid	7,500
Teaching Materials	0
Ustensils & Tools	14,545
Other Supplies & Services	0
Emergency Response Units	0
Cash Disbursements	0
Total RELIEF ITEMS, CONSTRUCTION AND SUPPLIES	41,326
Land & Buildings	0
Vehicles Purchase	0
Computer & Telecom Equipment	0
Office/Household Furniture & Equipment	0
Medical Equipment	0
Other Machinery & Equipment	0
Total LAND, VEHICLES AND EQUIPMENT	0
Storage, Warehousing	581
Distribution & Monitoring	2,200
Transport & Vehicle Costs	11,290
Logistics Services	0
Total LOGISTICS, TRANSPORT AND STORAGE	14,071
International Staff	3,675
National Staff	2,950
National Society Staff	2,479
Volunteers	7,500
Total PERSONNEL	16,604
Consultants	0
Professional Fees	0
Total CONSULTANTS & PROFESSIONAL FEES	0
Workshops & Training	3,500
Total WORKSHOP & TRAINING	3,500
Travel	1,100
Information & Public Relations	3,024
Office Costs	4,600
Communications	1,500
Financial Charges	200
Other General Expenses	0
Shared Support Services	0
Total GENERAL EXPENDITURES	10,424
Programme and Supplementary Services Recovery	5,585
Total INDIRECT COSTS	5,585
TOTAL BUDGET	91,510



Ghana: Floods



-  Most affected regions
-  Affected regions