

www.ifrc.org
Saving lives,
changing minds.

Disaster relief emergency fund (DREF)

Guatemala: Floods

 International Federation
of Red Cross and Red Crescent Societies

DREF operation n° MDRGT003
GLIDE n° TC-2011-000157-GTM
19 October 2011

The International Federation of Red Cross and Red Crescent (IFRC) Disaster Relief Emergency Fund (DREF) is a source of un-earmarked money created by the Federation in 1985 to ensure that immediate financial support is available for Red Cross and Red Crescent emergency response. The DREF is a vital part of the International Federation's disaster response system and increases the ability of National Societies to respond to disasters.

240,190 Swiss francs have been allocated from the IFRC's Disaster Relief Emergency Fund (DREF) to support the Guatemalan Red Cross (GRC) in delivering immediate assistance to 800 families (approximately 4,000 persons) for three months. Unearmarked funds to repay DREF are encouraged.

Summary: Heavy rainfall as a result of the Tropical Depression 12-E has caused flooding and mudslides in several departments of Guatemala. Authorities report 478,030 affected people, 30 deaths, 6 missing people and 19 injured as of 17 October.

The Guatemalan Red Cross is conducting response activities with the support of more than 1,200 volunteers from its branch network. Volunteers are conducting search and rescue activities, providing pre-hospital care, setting up collective centres and assisting families to re-establish contact with their relatives.

This DREF operation aims to support part of the GRC's overall Plan of Action with a focus on relief distributions, emergency health and water and sanitation through an integrated approach.

This operation is expected to be implemented over three months, and will therefore be completed by January 2012; a Final Report will be made available three months after the end of the operation (by April 2012).

[<Click here for the DREF budget; here for contact details; here to view the map of the affected area>](#)



GRC branches and volunteers are conducting search and rescue activities, providing pre-hospital care, setting up collective centres and assisting families to re-establish contact with its relatives. Source: GRC.

The situation

Over the week beginning 10 October, Tropical Depression 12-E (TD12-E) started to form in the gulf of Tehautepec, Mexico, 220km offshore from Salina Cruz, state of Oaxaca, with maximum sustained winds of 55kmp/h. Furthermore, a broad area of low pressure including the remnants of Tropical Depression 12-E, Hurricane Jova and a cold front has also been affecting Mexico, El Salvador, Honduras, Costa Rica, Nicaragua and Panama, with intense rainfall. On 13 October 2011, TD 12-E moved inland near the Mexican / Guatemalan border. Severe precipitations have caused flooding and landslides in Guatemala, as soils were already saturated and river levels were high as a result of previous rains. The Guatemalan government has decreed an State of Public Calamity. The most affected departments thus far are: Chimaltenango, El Progreso, Escuintla, Guatemala, Jalapa, Jutiapa, Petén, Quetzaltenango, Retalhuleu, San Marcos, Santa Rosa, Sololá, Suchitepéquez and Totonicapán. Several areas of Quetzaltenango city are flooded and the electricity service has been disrupted in several municipalities of the Sololá department. Official government figures as of 17 October 2011 are as follows, however figures are rapidly changing.

Affection	N° of people
Deaths	30
Missing	6
Injured	19
Evacuated	23,000
In collective centres	12,699
Affected	478,030

Source: Information Bulletin n° 2183 by CONRED – Data as of 17 October 2011.¹

In the housing sector, authorities report 8,312 homes with minor damage, 2,825 with moderate damage and 570 with severe damage. In addition, the national road network is severely damaged, with initial estimates indicating 44 sections of the main highway affected. Damage to the agricultural sector is also anticipated, but has not yet been assessed.

Thus far, the Ministry of Public Health and Social Support reports no preliminary damages to the health infrastructure. Nevertheless, the population could be affected by an increase in respiratory, gastrointestinal and dermatological diseases as well as experience negative psychological effects. The number of people in collective centres is also rising which results in a higher exposure to diseases. Furthermore, in some areas flood waters have contaminated water wells, which hinders access to safe water in the affected communities.

Coordination and partnerships

At the national level, the Guatemalan Red Cross actively coordinates with the Executive Secretariat of the National Coordinating Body for Disaster Reduction (Coordinadora Nacional para la Reducción de Desastres – CONRED), through the inter-institutional linkages which provide information to CONRED's Emergency Operations Centre (EOC). In addition, the National Society maintains coordination with the Humanitarian Network of Guatemala, which includes international organizations and UN system agencies, to integrate response efforts. The Humanitarian Network has designated lead agencies for the different technical sectors as follows:

- Coordination – OCHA and the Humanitarian Network
- Health – Pan American Health Organization (PAHO)
- Water and Sanitation – UNICEF
- Food – World Food Programme (WFP)
- Shelter – International Organization for Migration (IOM)
- Education – Plan International
- Early Recovery – UNDP
- Livelihoods – FAO

In country, the International Red Cross and Red Crescent Movement partners are also supporting the GRC's headquarters and branches in line with the Guatemalan Red Cross's Plan of Action to respond to this emergency. Partners in country include the International Committee of the Red Cross (ICRC), the Netherlands Red Cross, the Norwegian Red Cross and the Spanish Red Cross.

¹ <http://conred.gob.gt/emergencia/index.php/boletines/127-boletin-informativo-no-2183-autoridades-informan-de-cifras-por-danos-y-acciones-que-se-implementan-a-nivel-nacional.html>

Furthermore, the International Federation of Red Cross and Red Crescent Societies (IFRC) is following up the situation and coordinating with the National Society in order to better support the response needs identified in its Plan of Action. The IFRC maintains constant communication with the National Society through the regional representation for Central America and Mexico in Costa Rica, and the Pan American Disaster Response Unit (PADRU) which forms part of the Americas zone office in Panama.

At the local level, the GRC's National Intervention Team (NIT) members working in the affected areas are part of Incident Command System (Sistema de Comando de Incidente) and the Disaster Reduction Coordinating Bodies at the department and municipal levels.

Red Cross and Red Crescent action

The Guatemalan Red Cross's Emergency Operations Centre (EOC) is active and in communication with all the 20 GRC branches across the country to monitor the situation. The EOC is also gathering, analyzing and sharing information to inform decision-making during the response activities. Furthermore, the EOC activated an institutional red alert to monitor the situation in the country, in line with the alert level issued by CONRED.

More than 1,200 Guatemalan Red Cross volunteers from the 20 branches of the National Society are supporting the humanitarian response efforts. Volunteers are trained in several technical areas including: search and rescue, pre-hospital care, NIT training (specialized in water and sanitation, hygiene promotion and emergency health), damage and needs assessments, EOC management, management of collective centres and relief aid.

Since the onset of the emergency, GRC branches and volunteers are conducting search and rescue activities, providing pre-hospital care, setting up collective centres and assisting families to re-establish contact with their relatives. Branches located in the departments most affected by TD 12-E have conducted preliminary damage and needs assessments. Further assessments will be carried out in coordination with local authorities in order to evaluate other communities. Seventeen branches have been involved actively in response activities since the start, including: Chiquimula, Coatepeque, Concepción Chiquirichapa, El Estor, El Palmar, Jalapa, Mazatenango, Petén, Quetzaltenango, Tecún Umán, Quiché, Serchil, Purulhá, Tejutla, Retalhuleu, Sacapulas and Guatemala.

A collection centre is open in the GRC's headquarters and bank accounts are available for donations. Furthermore, the GRC mobilized 1,000 hygiene kits to the branches in the south and west departments of the country to assist people sheltered in collective centres.

The needs

The rapid assessment findings show the immediate needs for those affected are: food, non-food items, access to safe drinking water given that water sources, in particular wells which are used by many communities have been contaminated as a result of flooding, promotion of good hygiene practices to support the reduction of diseases from contaminated food and water, as well as the added risks associated with living in collective centres.

The proposed operation

This DREF-supported operation seeks to support part of the overall GRC's Plan of Action. The DREF-funded operation will focus on 800 of the most affected families in the departments of Retalhuleu, Suchiquepuez, Quetzaltenango and San Marcos to complement ongoing humanitarian action by the government and other organizations in neighbouring provinces. Funding is currently sought to assist the remaining 400 most affected families identified in needs assessments carried out by the Guatemalan Red Cross; Partner National Societies are being approached as well as external organizations to secure this funding.

Relief distributions (food and basic non-food items)
Outcome: The immediate needs of 800 families affected by Tropical Depression 12-E are met through the distribution of food items and blankets.
Output: 800 families (4,000 people) receive food parcels and blankets.
Activities planned: <ul style="list-style-type: none">• Develop beneficiary selection and registration system to deliver intended assistance.

- Procure locally humanitarian relief items.
- Distribute food parcels (1 time distribution for all target families)
- Distribute 5 blankets per family (based on an average family of five members)
- Monitor and evaluate the relief activities and provide reporting on relief distributions.

The food parcel was designed to assist a family of five for one month and contains the following items:

- 30 pounds of corn flour
- 30 pounds of beans
- 20 pounds of rice
- 1 gallon of oil
- 2 pounds of salt
- 5 pounds of sugar
- 5 pounds of Incaparina, a protein-rich dietary supplement

Emergency health

Outcome: The immediate risks to health of populations affected by TD 12-E are reduced

Output 1: Rapid Health Assessments (RHA) are carried out to understand the health situation and immediate risks.

Activity planned:

- Assess the health situation within the affected population.

Output 2: Community-based disease prevention and health promotion is provided to 600 families (3,000 people)

Activities planned:

- Conduct a community first aid training
- Carry out recreational activities for children and youth to provide leisure and prevent violence
- Promote nutrition for the elderly and pregnant women.
- Monitor, evaluate and provide reporting on activities.

Output 3: Epidemic prevention and control measures are carried out

Activities planned:

- Provide training on recognition of symptoms and warning signs for immediate referral to health care.
- Conduct epidemiological surveillance at the community level.
- Conduct vector control activities (for dengue and malaria).
- Procure mosquito nets.
- Distribute 3 mosquito nets per family (based on an average of 5 family members) to 800 families
- Carry out a workshop for beneficiary families focusing on the use and care of mosquito nets to 800 families.
- Monitor, evaluate and provide reporting on activities.

Output 4: HIV and AIDS, sexually transmitted diseases (STDs) prevention and essential management is provided

Activities planned:

- Raise awareness at the level of collective centres and communities of STDs, HIV and AIDS, and prevention of unwanted pregnancy.
- Voluntary HIV counselling and testing.
- Distribute condoms in collective centres and to the affected communities.
- Monitor, evaluate and provide reporting on activities.

The 800 families targeted under the third output with mosquito nets are the same families that will receive relief items (*Relief distributions* outcome) and jerry cans (*Water, sanitation and hygiene promotion* outcome) in order to provide an integrated response to their needs.

Water, sanitation, and hygiene promotion

Outcome: The risk of waterborne and water related diseases is reduced through the provision of

safe water, adequate sanitation as well as hygiene promotion to 800 families (approx. 4,000 beneficiaries) within the population affected by Tropical Depression E12.

Output 1: 800 families have access to safe water and means for safe storage.

Output 2: 800 families are reached through hygiene promotion activities

Activities planned:

- Distribute safe water to shelters and affected communities.
- Conduct hygiene promotion talks to affected families.
- Procure and distribute water filters to 800 families (1 per family).
- Distribute 2,400 jerrycans (water containers): three per family.
- Clean affected wells
- Distribute one hygiene kit per family

As with the distribution of mosquito nets, the 800 families targeted under the first outcome (Relief Distribution) will also receive jerry cans, hygiene kits and water filters.

Contact information

For further information specifically related to this operation, please contact:

- **In the Guatemalan Red Cross:** Teresa J. Marroquín Ábrego, National Disaster Coordinator of the Guatemalan Red Cross; phone / fax: +502.238.16536; and email: teresamarroquin@cruzroja.org.gt
- **IFRC regional representation for Central America and Mexico in Costa Rica:** Fabricio Lopez, regional representative for Central America and Mexico; email: fabricio.lopez@ifrc.org
- **IFRC Americas zone office in Panama, phone: +317.3050**
 - Jorge Zequeira, PADRU coordinator; email: jorge.zequeira@ifrc.org
 - Douglas Baquero, regional logistics coordinator; email: douglas.baquero@ifrc.org
 - Jane Grimshaw; PMER manager; email: jane.grimshaw@ifrc.org
- **In Geneva:** Pablo Medina, operations quality assurance senior officer; phone: + 41.22.730.4381; fax: + 41.22.733.0395; email: pablo.medina@ifrc.org



Click here

1. DREF budget [below](#)
2. Map of the affected areas [below](#)
3. Click [here](#) to return to the title page

How we work

All IFRC assistance seeks to adhere to the Code of Conduct for the International Red Cross and Red Crescent Movement and Non-Governmental Organizations (NGOs) in Disaster Relief and the Humanitarian Charter and Minimum Standards in Disaster Response (Sphere) in delivering assistance to the most vulnerable.

The IFRC's vision is to inspire, encourage, facilitate and promote at all times all forms of humanitarian activities by National Societies, with a view to preventing and alleviating human suffering, and thereby contributing to the maintenance and promotion of human dignity and peace in the world.

www.ifrc.org

Saving lives, changing minds.



The IFRC's work is guided by *Strategy 2020* which puts forward three strategic aims:

1. Save lives, protect livelihoods, and strengthen recovery from disaster and crises.
2. Enable healthy and safe living.
3. Promote social inclusion and a culture of non-violence and peace.

DREF OPERATION

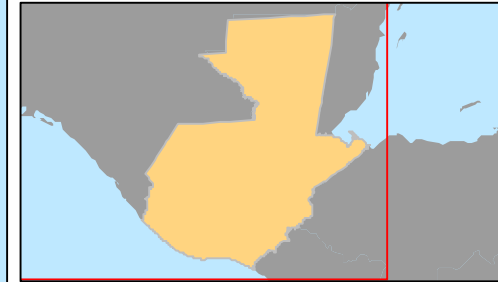
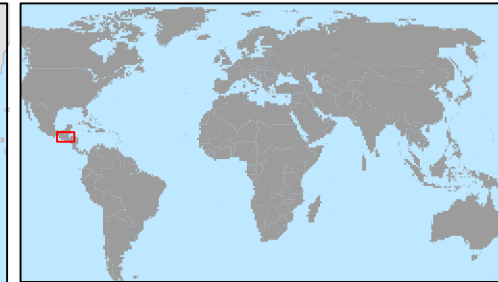
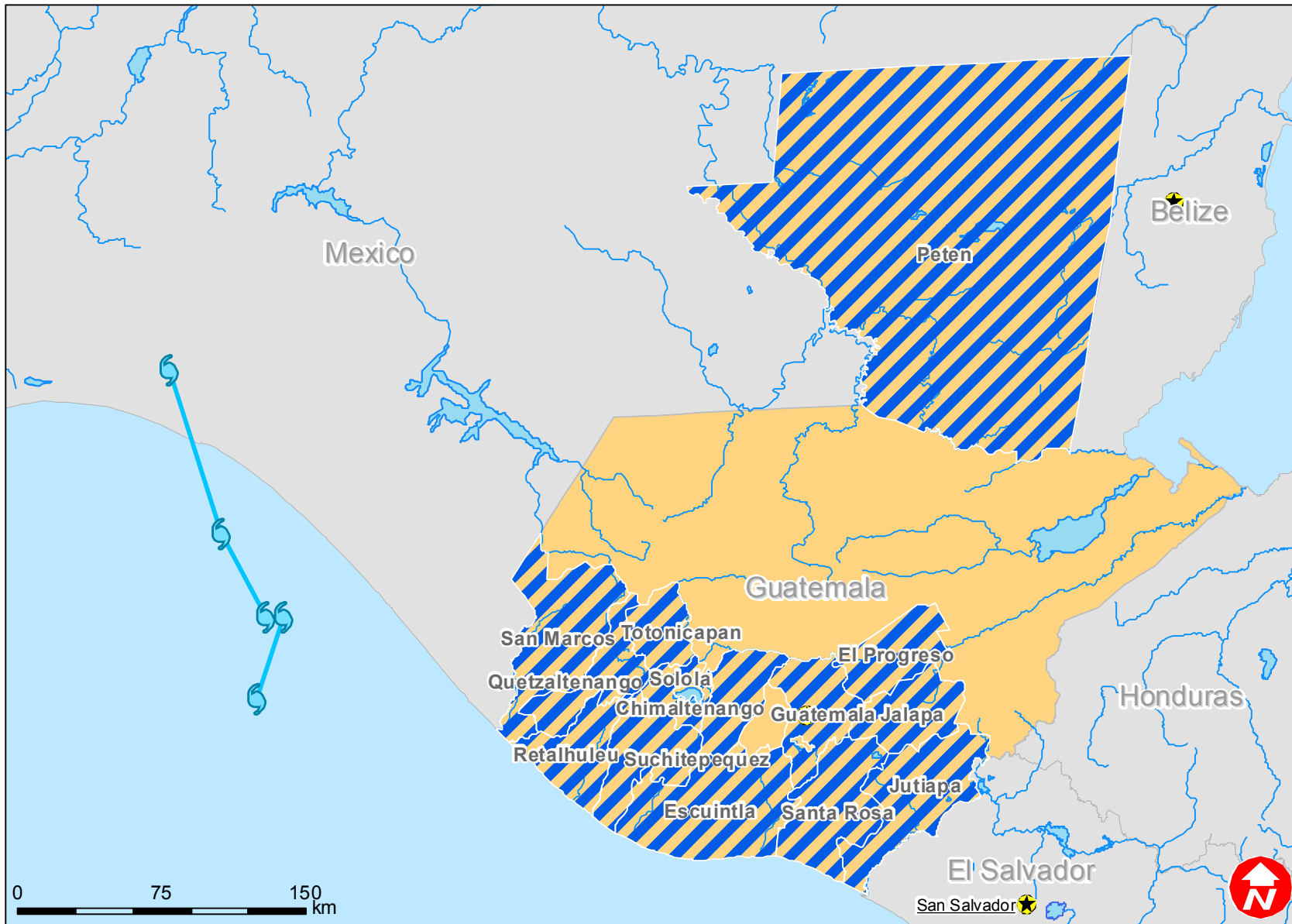
19/10/2011




MDRGT003 Guatemala Floods

Budget Group	DREF Grant Budget CHF
Shelter - Relief	
Shelter - Transitional	
Construction - Housing	
Construction - Facilities	
Construction - Materials	
Clothing & Textiles	42,365
Food	50,263
Seeds & Plants	
Water, Sanitation & Hygiene	64,535
Medical & First Aid	0
Teaching Materials	4,488
Ustensils & Tools	8,617
Other Supplies & Services	
Emergency Response Units	
Cash Disbursements	
Total RELIEF ITEMS, CONSTRUCTION AND SUPPLIES	170,267
Land & Buildings	
Vehicles Purchase	
Computer & Telecom Equipment	
Office/Household Furniture & Equipment	
Medical Equipment	
Other Machiney & Equipment	
Total LAND, VEHICLES AND EQUIPMENT	0
Storage, Warehousing	
Dsitribution & Monitoring	5,385
Transport & Vehicle Costs	7,270
Logistics Services	
Total LOGISTICS, TRANSPORT AND STORAGE	12,656
International Staff	
National Staff	
National Society Staff	5,090
Volunteers	5,385
Total PERSONNEL	10,476
Consultants	
Professional Fees	
Total CONSULTANTS & PROFESSIONAL FEES	0
Workshops & Training	7,180
Total WORKSHOP & TRAINING	7,180
Travel	3,231
Information & Public Relations	8,706
Office Costs	4,578
Communications	3,949
Financial Charges	4,488
Other General Expenses	
Shared Support Services	
Total GENERAL EXPENDITURES	24,952
Programme and Supplementary Services Recovery	14,660
Total INDIRECT COSTS	14,660
TOTAL BUDGET	240,190



Guatemala: Landslides



-  Capitals
-  Tropical depression 12-E
-  Departments most affected by landslides