

www.ifrc.org
Saving lives,
changing minds.

Disaster relief emergency fund (DREF) Mali: Floods

 International Federation
of Red Cross and Red Crescent Societies

DREF operation n° MDRML007
GLIDE n° FL-2011-000129-MLI
8 September, 2011

The International Federation of Red Cross and Red Crescent (IFRC) Disaster Relief Emergency Fund (DREF) is a source of un-earmarked money created by the Federation in 1985 to ensure that immediate financial support is available for Red Cross and Red Crescent emergency response. The DREF is a vital part of the International Federation's disaster response system and increases the ability of National Societies to respond to disasters.

CHF 264,684 has been allocated from the IFRC's Disaster Relief Emergency Fund (DREF) to support Mali Red Cross in delivering immediate assistance to some 7,500 beneficiaries. Un-earmarked funds to repay DREF are encouraged.

Summary: Since the beginning of August 2011, Mali is faced with heavy rainfall that has resulted in flooding in some locations and overflows of ponds in others, claiming many victims. One death has been reported.



Flooded areas in Mali. Photo Malian Red Cross

DREF funds will be used to target 7,500 of the most vulnerable and reducing their vulnerability by providing essential shelter and non-food items (including tarpaulins, blankets, sleeping mats and kitchen sets), preventing spread of disease through distribution of bed nets, hygiene supplies and disinfection of flooded latrines and wells, and building awareness on good health and hygiene practices.

This operation is expected to be implemented over 3 months, and will therefore be completed by December, 2011; a Final Report will be made available three months after the end of the operation (by March, 2012).

[<click here for the DREF budget; here for contact details; here for a map of the affected area>](#)

The situation

The recent floods in Mali have affected many locations. The following regions were the most affected: Timbuktu (cities of Goundam and Gossi); Mopti (village of Sana) in the commune of Koro; Sikasso; Kidal (city of Kidal); Kayes (Diboly, in 5 villages); Koulikoro (prefecture of Kangaba).

Gossi was particularly affected, experiencing rainfall of 102 mm and high numbers of affected people. As northern Mali is a sandy region, most houses are entirely built in *banco* (mud bricks). Grouped settlements there typically have no drainage or wastewater systems. These factors contributed to the collapse of many dwellings and huge material losses, sometimes beyond what would be expected from the amount of rain received locally, due to heavier rains upstream (e.g. Kidal). In other locations (e.g. Diboly/Kayes), torrential rains repeated over a short interval have caused the floods.

For all the locations concerned, 15,415 disaster victims have been counted. Material damage was also significant and included loss of livestock, and destruction of market gardens. The table below gives more details on damage and losses.

Total affected	Number of households	Houses destroyed	Most affected people	Injured	Deaths	Destroyed latrines	Flooded wells
15,415	1,500	1,834	7,500	0	01	81	230

Coordination and partnerships

Disaster management coordination is managed by Protection Civile du Mali (a state service), which ensures information collection and sharing with humanitarian organisations.

The State of Mali together with its partners has provided food assistance. Three tonnes of millet have been distributed to the populations affected by the floods.

The Red Cross will focus its intervention on non-food items to assist the 1,500 households (7,500 beneficiaries); the local committees of the Red Cross have been mobilised to provide assistance to the disaster-stricken populations.

Red Cross and Red Crescent action

As indicated, Mali Red Cross (Croix-Rouge Malienne – CRM) has sent an assessment team in the flooded locations, which makes it possible to quantify the fundamental needs of the persons affected.

The needs

Selection of people to be reached: Mali Red Cross, with support from the IFRC, as well as other partners (including PNSs) intends to focus its action on assisting the 7,500 most vulnerable persons. These are children under five years of age, elderly people, women who receive no support, disabled people, pregnant women and homeless people. This target of 7,500 beneficiaries has been identified in 1,500 households directly hit by the floods.

The proposed operation

This operation aims to reduce the immediate vulnerabilities among the targeted affected population. Moreover, given the weather forecasts that show continuity in rainfall, there is an acute need for protection kits against bad weather (temporary shelters, clothing and bedding) for the populations in the affected locations. Typically for flood operations, the hygiene and sanitation component will also be taken into account.

Relief distributions (food and basic non-food items)

Outcome: To contribute to the reduction of the vulnerability of 1,500 family flood victims with the provision of relief materials.

Outputs (expected results)

Relief items are procured and distributed to 1,500

Activities planned:

- Procure and distribute 3,000 blankets, 3,000 sleeping mats, 1,500 kitchen sets;
- Transport and warehousing of all procured materials to the nearest point of distribution;
- Conduct integrated refreshment training for 120 volunteers on relief distribution, health and care, water, sanitation and assessment.

Emergency health

Outcome: To contribute to the prevention of communicable diseases outbreaks among the 1,500 relocated families in the affected regions.

Outputs (expected results)

The risks of communicable diseases outbreaks are reduced for the most affected communities and the health status of the community is maintained.

Activities planned:

- Utilize the above stated trained volunteers on health preventive measures on communicable diseases;
- Provide IEC materials for health, watsan and risk reduction sensitization activities;
- Procure and distribute 3,000 mosquito nets for 1,500 families;
- Conduct hang-up and keep-up activities on mosquito nets utilization after distribution;
- Carry out health sensitization activities in flooded communities.

Water, sanitation, and hygiene promotion

Outcome: To contribute to the improvement of access to clean water, hygiene and sanitation facilities for 1,500 affected families.

Outputs (expected results)

1,500 flood affected families in the flooding regions have access to clean water, hygiene and sanitation facilities.

Activities planned:

- Procure and distribute 5,250 bars of soap and 1,500 buckets;
- Procure 4,500 detergents and 4,500 bottles of bleaching and disinfect flooded latrines and wells;
- Conduct hygiene promotion for the affected families.

Emergency shelter

Outcome: To contribute in improving the vulnerability of 1,500 relocated families through provision of materials.

Outputs (expected results)

Shelter materials are procured and distributed to 1,500 flood affected families.

Activities planned:

- Procure and distribute 3,000 tarpaulins, 1,500 shelter tool kits;
- Build capacities of volunteers on improved shelter constructions;
- Sensitize beneficiaries with flood resistant buildings as guide for affected families.

Contact information

- **IFRC Sahel Regional Representation:** Momodou Lamin Fye, Regional Representative, Dakar phone:(Office) +221.33.869.36.41; (Mobile) +221.77.332.56.72; email: momodoulamin.fye@ifrc.org; Per Becker, Regional Disaster Risk Management Coordinator phone:(Office) +221.33.869.36.68; (Mobile) +221.77.638.21.36; email: per.becker@ifrc.org
- **IFRC Africa Zone:** Dr Asha Mohammed, Head of Operations, Johannesburg, Phone: +27.11.303.97.00, Fax: + 27.11.884.38.09; +27.11.884.02.30 Email: asha.mohammed@ifrc.org;
- **In Geneva:** Christine South, Operations Support, Phone: +41.22.730.4529, email: christine.south@ifrc.org
- **Regional Logistics Unit (RLU):** Kai Kettunen, Regional Logistics Delegate Dubai, phone +971.4.883.38.87 Mobile +971.50.458.48.72, Fax +971.4.883.22.12, email: kai.kettunen@ifrc.org

For Resource Mobilization and Pledges:

- **In IFRC Africa Zone:** Ed Cooper; Resource Mobilization and Performance and Accountability Coordinator; Johannesburg; Email ed.cooper@ifrc.org; Phone: Tel: +27.11.303.9700; Fax: +27.11.884.3809; +27.11.884.0230

For Performance and Accountability (planning, monitoring, evaluation and reporting)

- **In IFRC Zone:** Robert Ondrusek; Planning, Monitoring, Evaluation and Reporting Delegate, Johannesburg; email: robert.ondrusek@ifrc.org; Phone: Tel: +27.11.303.9744; Fax: +27.11.884.3809; +27.11.884.0230
-

[Click here](#)

1. DREF budget [below](#)
 2. Click [here](#) to return to the title page
-

How we work

All IFRC assistance seeks to adhere to the Code of Conduct for the International Red Cross and Red Crescent Movement and Non-Governmental Organizations (NGOs) in Disaster Relief and the Humanitarian Charter and Minimum Standards in Disaster Response (Sphere) in delivering assistance to the most vulnerable.

The IFRC's vision is to inspire, encourage, facilitate and promote at all times all forms of humanitarian activities by National Societies, with a view to preventing and alleviating human suffering, and thereby contributing to the maintenance and promotion of human dignity and peace in the world.

www.ifrc.org
Saving lives, changing minds.



The IFRC's work is guided by Strategy 2020 which puts forward three strategic aims:

1. Save lives, protect livelihoods, and strengthen recovery from disaster and crises.
 2. Enable healthy and safe living.
 3. Promote social inclusion and a culture of non-violence and peace.
-

DREF OPERATION

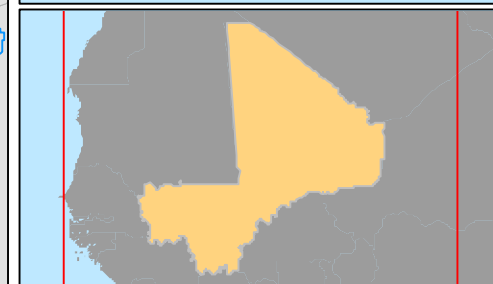
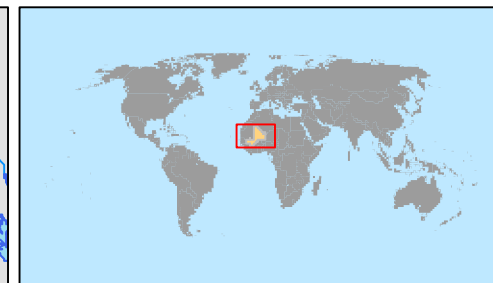
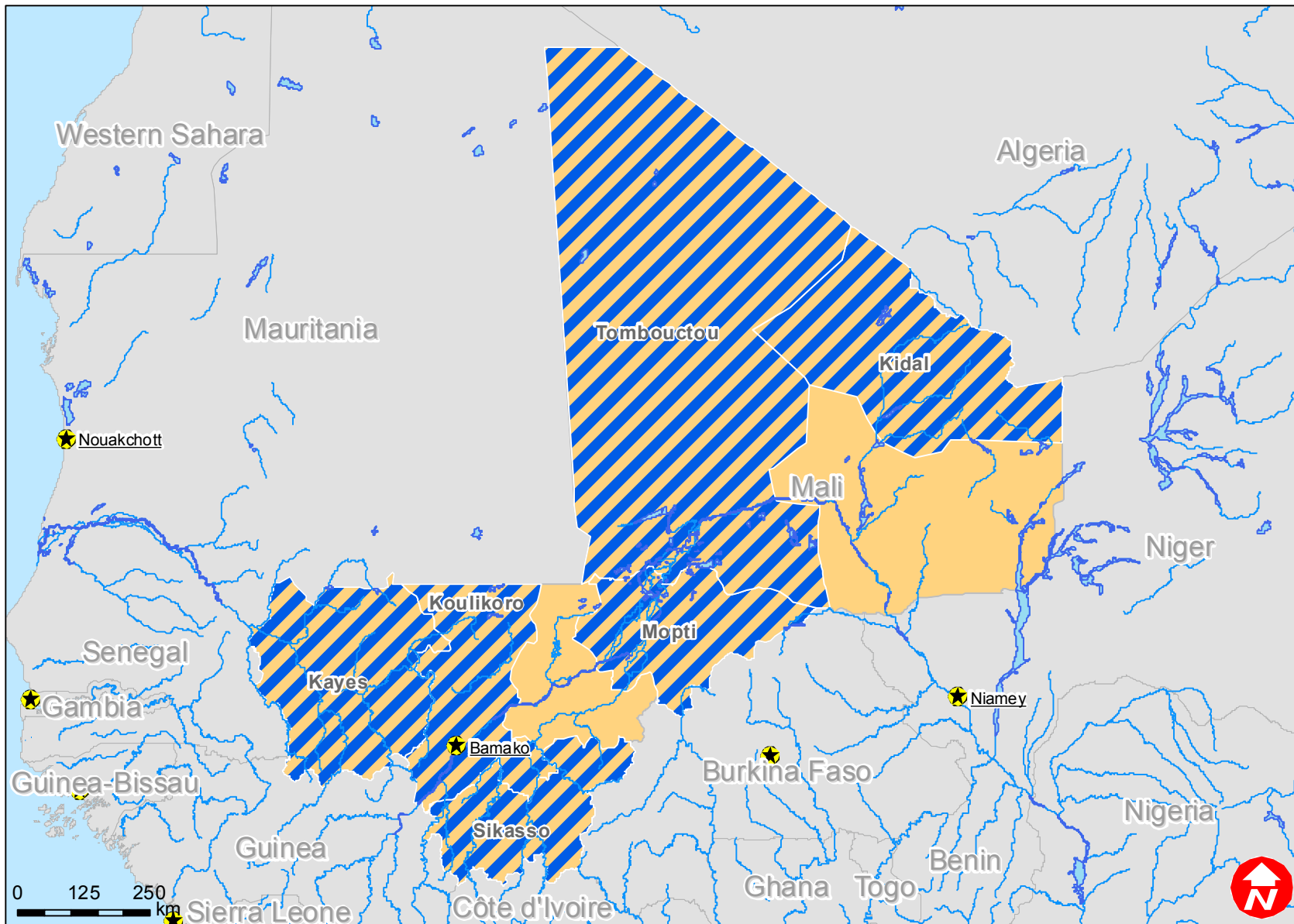
08-09-11


MALI FLOODS

Budget Group	DREF Grant Budget CHF
Shelter - Relief	76,500
Shelter - Transitional	
Construction - Housing	
Construction - Facilities	
Construction - Materials	
Clothing & Textiles	45,000
Food	
Seeds & Plants	
Water, Sanitation & Hygiene	0
Medical & First Aid	0
Teaching Materials	0
Utensils & Tools	37,830
Other Supplies & Services	15,720
Emergency Response Units	
Cash Disbursements	
Total RELIEF ITEMS, CONSTRUCTION AND SUPPLIES	175,050
Land & Buildings	
Vehicles Purchase	
Computer & Telecom Equipment	
Office/Household Furniture & Equipment	
Medical Equipment	
Other Machinery & Equipment	
Total LAND, VEHICLES AND EQUIPMENT	0
Storage, Warehousing	
Distribution & Monitoring	3,000
Transport & Vehicle Costs	25,110
Logistics Services	
Total LOGISTICS, TRANSPORT AND STORAGE	28,110
International Staff	
Regionally Deployed Staff	21,000
National Staff	
National Society Staff	7,530
Volunteers	900
Total PERSONNEL	29,430
Consultants	
Professional Fees	
Total CONSULTANTS & PROFESSIONAL FEES	0
Workshops & Training	1,440
Total WORKSHOP & TRAINING	1,440
Travel	1,500
Information & Public Relations	0
Office Costs	4,000
Communications	1,000
Financial Charges	4,000
Other General Expenses	4,000
Shared Support Services	
Total GENERAL EXPENDITURES	14,500
Programme and Supplementary Services Recovery	16,154
Total INDIRECT COSTS	16,154
TOTAL BUDGET	264,684



Mali: Floods



 Affected regions

The maps used do not imply the expression of an opinion on the part of the International Federation of the Red Cross and Red Crescent Societies or National Societies concerning the legal status of a territory or of its authorities.

Map data sources: ESRI, DEVINFO, International Federation