


www.ifrc.org
Saving lives,
changing minds.

Disaster relief emergency fund (DREF) Paraguay: Hailstorm

 International Federation
of Red Cross and Red Crescent Societies

DREF operation n° MDRPY010
Glide No. ST-2011-000116-PRY
26 August 2011

The International Federation of Red Cross and Red Crescent (IFRC) Disaster Relief Emergency Fund (DREF) is a source of un-earmarked money created by the Federation in 1985 to ensure that immediate financial support is available for Red Cross and Red Crescent emergency response. The DREF is a vital part of the International Federation's disaster response system and increases the ability of National Societies to respond to disasters.

185,603 Swiss francs have been allocated from the IFRC's Disaster Relief Emergency Fund (DREF) to support the Paraguayan Red Cross (PRC) in delivering immediate assistance to some 887 families (4,435 persons). Unearmarked funds to repay DREF are encouraged.

Summary:

On 8 August 2011, a hailstorm with strong winds struck the Itapúa department affecting 1,714 families in the municipalities of Mayor Otaño and Carlos Antonio López destroying crops and rooftops. The Paraguayan Red Cross (PRC) aims to support 887 urban and rural families with food parcels, hygiene kits and seed kits for family subsistence crops.

This operation is expected to be implemented over three months, and will therefore be completed by November 2011; a Final Report will be made available three months after the end of the operation (by February 2012).

[<click here for the DREF budget;](#)
[here for contact details;](#)
[here to view the map of the affected area>](#)



Hail, sometimes as large as 8 cm, fell over the department of Itapúa, severely affecting roofs and crops. Source: Paraguayan Red Cross.

The situation

At approximately, 16:00 in the afternoon on 8 August a hailstorm with strong winds struck the department of Itapúa, destroying homes and crops. The most affected areas are the Mayor Otaño and Carlos Antonio López municipalities, which are located 180 kilometres to the north of Encarnación, the departmental capital.

The hailstorm, which produced hail as large as 8 centimetres, lasted for approximately 30 minutes and caused serious damages to the fibre cement roofing used in the area. The situation was then exacerbated when the hailstorm was followed by strong rainfall. Thus far, the police have not reported any deaths related to the emergency.

Based on preliminary reports of the needs assessments completed by the Paraguayan Red Cross (PRC) Itapúa branch, 1,714 families have been affected, of which 1,264 live in urban areas.

Municipality	Zone	Neighbourhood	Affected families	Roof sheets
Mayor Otaño	Urban	Universitario	273	14,800
		Republicano	216	8,461
		8 de diciembre	178	13,167
		Defensores del Chaco	320	16,322
		Santo Domingo	145	8,818
	Rural	Repatriación	164	7,837
		3ra Línea Puerto	11	422
		4ta Línea barrio San Juan	5	250
		1ra. and 2da. Línea puerto.	122	6,780
		Capital Urbano	53	1,153
		Barrio Santa Librada.	42	1,355
		Quinta línea fondo	20	628
		Pareja 2	1	15
		San Miguel Norte	1	15
		Barrero Guazú	2	80
		Others	29	1,312
Carlos Antonio López	Urban	San Isidro	62	1,841
		San Pedro	22	60
		Virgen del Carmen	19	50
		Maria Auxiliadora	29	870
TOTAL			1,714	84,236

Although services were interrupted for two hours after the storm, water, communications and electricity has now been completely restored. However, as many roads in the area are not asphalted, accessibility to some areas is difficult.

Ten days later, on 18 August, a second hailstorm struck Paraguay, affecting some 2,000 families in the San Pedro, Canindeyú, Concepción and Central departments.

Coordination and partnerships

The National Emergency Operations Centre (Centro Nacional de Operaciones de Emergencia, CNOE) of the PRC is coordinating and sharing information with the National Emergency Secretariat (Secretaría de Emergencia Nacional, SEN), the governmental institution in charge of emergency responses. The response in Paraguay is organized at different levels, each with its own coordination and information sharing mechanisms: the SEN maintains contact with the Itapúa provincial government which gathers the information

sent by the affected municipalities; these have completed damage and needs assessments in partnership with the institutions present in the region. The governmental authorities are supporting evacuations and assessments, providing medical assistance and distributing relief items, including construction materials such as fibre-cement roofing sheets.

Red Cross and Red Crescent action

Four volunteers trained as National Intervention Team members, with specializations in logistics, first aid, communications and psychosocial support were deployed to the affected area to support the assessments carried out by the PRC Itapúa branch as well as the drafting of the plan of action. In addition, the PRC CNOE has issued an information alert, a preliminary report and an information bulletin that was shared with partner organizations. The information was also uploaded into the IFRC's Disaster Management Information System (DMIS).

The needs

Selection of people to be reached:

The PRC will select the 887 most affected families from seven communities as stated in the following table:

Municipality	Community	No. of families
Mayor Otaño	Universitario	273
	Defensores del Chaco	320
	1era and 2da línea	122
Carlos A. López	San Isidro	62
	San Pedro	62
	Virgen del Carmen	19
	Maria Auxiliadora	29

The most important needs recognized at the moment are:

- Repairs of roofs
- Food parcels, relief items and hygiene kits for affected families.
- Restoration of crops to sustain livelihoods and family subsistence crops to ensure the food security of affected families.

The proposed operation

As the Paraguayan government is supporting the affected families with the repairs of homes and cash crops, the National Society will support 887 urban and rural families from the districts of Carlos A. López and Mayor Otaño with food parcels, hygiene kits and seeds for family subsistence crops.

Relief distributions (food and basic non-food items)
Outcome: 887 of the most vulnerable families are assisted with humanitarian aid in order to compensate for the loss of their livelihoods.
Output 1: 887 affected families have access to relief assistance. Output 2: 887 affected families reactivate their subsistence crops damaged by the hailstorm.
Activities planned: <ul style="list-style-type: none"> • Distribution of 887 food parcels and hygiene kits to sustain a family's needs for one month. • Procurement and distribution of 887 seed kits to support the recovery of family subsistence crops. • Hiring of an agronomist to provide technical advice to targeted families. • Monitoring, reporting and evaluation of relief activities.

The hygiene kits are designed to support a family of five (country average) for one month as the table below lists:

#	Items	Description	Quantity
---	-------	-------------	----------

1	Laundry soap bar	Animal or vegetable fat base (except pig fat)	5
2	Roll of toilet paper	Recycled, double sheet	12
3	Soap bars	Hand/body soap	13
4	Toothpaste tube	Plastic tube	5
5	Toothbrush	Medium size	5
6	Shampoo	For adults, normal hair	5
7	Razors	Disposable	5
8	Feminine pads packages	regular	8
9	Hand towel	100% cotton, 60 x 30cm	5
10	Comb	Plastic, 16cm x 6cm approx.	2
11	Plastic bag	Transparent, resilient, 45cm x 65cm approx.	1

The Chilean Red Cross (CRCh) will support the Paraguay Red Cross by sending the hygiene kits from the CRCh prepositioned stock in Santiago, Chile, in coordination with the Regional Logistics Unit (RLU). This DREF-supported operation will cover the replenishment of hygiene kits sent by the Chilean Red Cross to Asunción, Paraguay.

As the affected families that will be supported by the operation lost both their cash crops and their subsistence family crops, the National Society will distribute food parcels to cover the families' needs for one month, while they recover from the disaster. Considering Sphere project standards, these food parcels were designed to *complement* the daily diet of affected families. As listed in the table below, each parcel has seven food items that add up to 895 kilocalories:

	Requirements (person /day)	Energy (Calories/ gr.)	Energy- kilocalories (person /day)	Requirements per family (5 persons/ day)	Quantity -Kg (30 days)
Rice	55	3,6	198	275	10
Flour	30	3,5	105	150	5
Noodles	30	3,5	105	150	5
Sugar	25	4	100	125	5
Beans	55	3,4	187	275	10
Salt	12	0	0	60	2
Yerba mate (hot beverage)	n/a	n/a	n/a	n/a	5
Oil	25	8	200	125	5
TOTAL			895		47

The PRC will also distribute seeds to assist families in the recovery of their subsistence family crops that will support them while their orange crops which are the basis of their livelihoods recover. Following the advice of agronomists from the affected municipalities, each family will receive:

Seed	Quantity (grams or kilos)
Courgette	0,03 gr.
Beans	5 gr.
Tupi corn	5 kg.
Chipa corn	5 kg.
Cucumber	0,002 gr.
Beet	0,01 gr.
Watermelon	0,003 gr.
Squash	0,003 gr.
Lettuce	0,005 gr.

Additionally, the National Society will hire an agronomist to provide technical assistance and support the coordination of agricultural authorities.

Contact information

For further information specifically related to this operation please contact:

- **National Society:** Luis Díaz de Bedoya, president of the Paraguayan Red Cross, phone: 59521-222-797; email: crppcia@uninet.com.py
- **IFRC Regional Representation:** Gustavo Ramirez, regional representative for the Southern Cone and Brazil; phone: +541 1495 17420; email: gustavo.ramirez@ifrc.org:
- **IFRC Zone:** Jorge Zequeira, Pan American Disaster Response Unit (PADRU) coordinator; phone: + 507 316 1001; fax: + 507 316 1082; and email: jorge.zequeira@ifrc.org.
- **In Geneva:** Pablo Medina, operations quality assurance senior officer; phone: + 41 22 730 4381; fax: + 41 22 733 0395; and email: pablo.medina@ifrc.org

**For Performance and Accountability
(planning, monitoring, evaluation and reporting enquiries)**

- **In IFRC Zone:** Jane Grimshaw, PMER manager; phone: +507.317.3050; email: jane.grimshaw@ifrc.org



Click here

1. Budget **below**
2. Click **here** to return to the title page

How we work

All IFRC assistance seeks to adhere to the Code of Conduct for the International Red Cross and Red Crescent Movement and Non-Governmental Organizations (NGO's) in Disaster Relief and the Humanitarian Charter and Minimum Standards in Disaster Response (Sphere) in delivering assistance to the most vulnerable.

The IFRC's vision is to inspire, encourage, facilitate and promote at all times all forms of humanitarian activities by National Societies, with a view to preventing and alleviating human suffering, and thereby contributing to the maintenance and promotion of human dignity and peace in the world.

www.ifrc.org
Saving lives, changing minds.



The IFRC's work is guided by *Strategy 2020* which puts forward three strategic aims:

1. Save lives, protect livelihoods, and strengthen recovery from disaster and crises.
 2. Enable healthy and safe living.
 3. Promote social inclusion and a culture of non-violence and peace.
-

DREF OPERATION

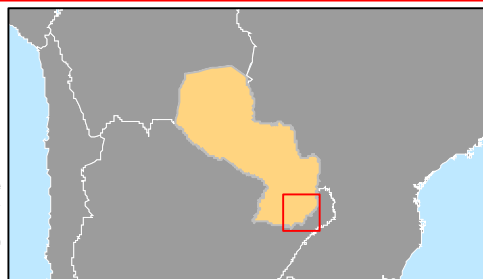
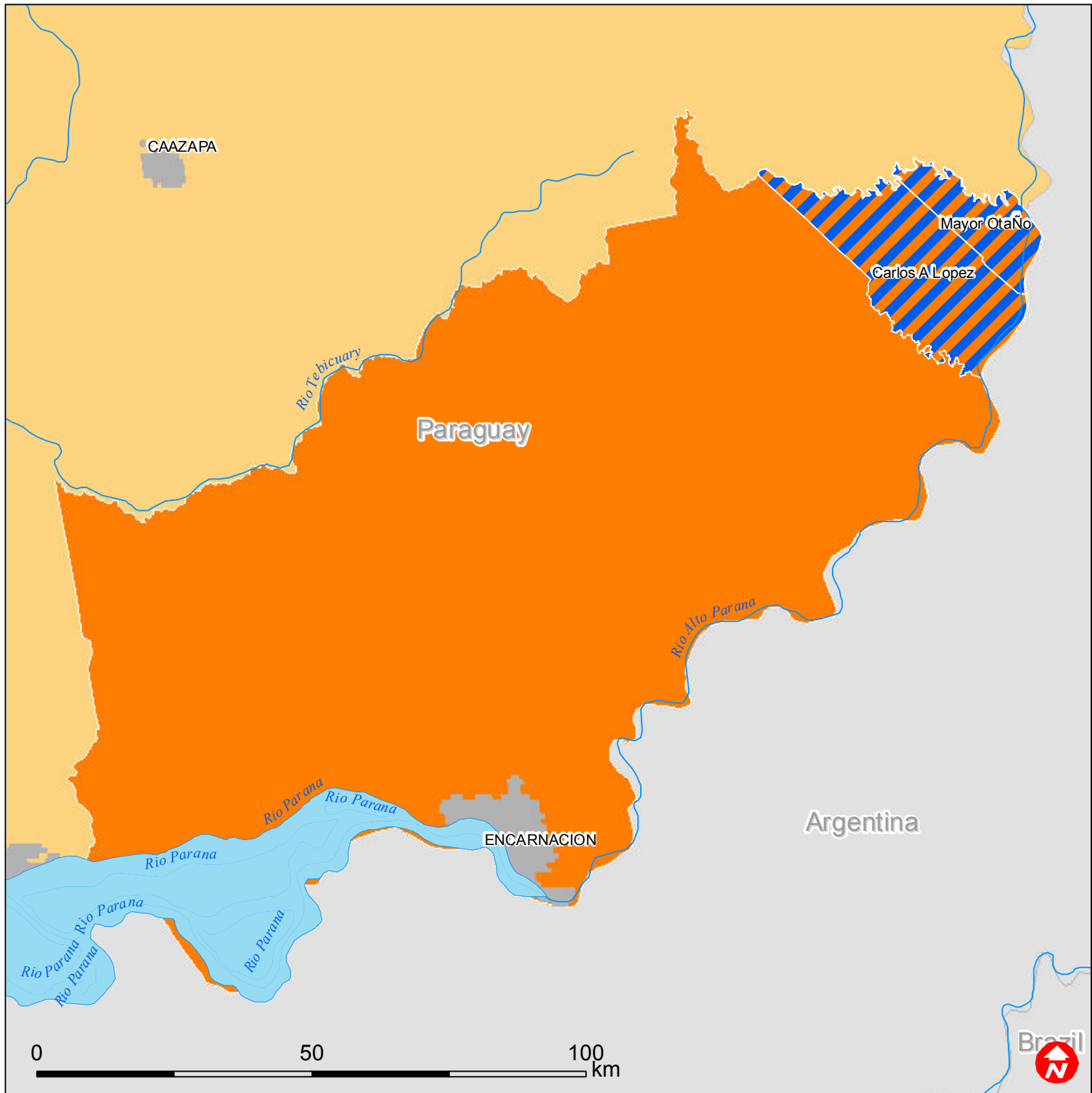
26/08/2011



APPEAL Paraguay Hailstorm

Budget Group	DREF Grant Budget CHF
Shelter - Relief	
Shelter - Transitional	
Construction - Housing	
Construction - Facilities	
Construction - Materials	
Clothing & Textiles	
Food	67,838
Seeds & Plants	53,705
Water, Sanitation & Hygiene	21,199
Medical & First Aid	
Teaching Materials	
Ustensils & Tools	
Other Supplies & Services	
Emergency Response Units	
Cash Disbursements	
Total RELIEF ITEMS, CONSTRUCTION AND SUPPLIES	142,742
Land & Buildings	
Vehicles Purchase	
Computer & Telecom Equipment	
Office/Household Furniture & Equipment	
Medical Equipment	
Other Machinery & Equipment	
Total LAND, VEHICLES AND EQUIPMENT	0
Storage, Warehousing	
Distribution & Monitoring	4,780
Transport & Vehicle Costs	1,992
Logistics Services	
Total LOGISTICS, TRANSPORT AND STORAGE	6,772
International Staff	
National Staff	
National Society Staff	3,585
Volunteers	7,170
Total PERSONNEL	10,755
Consultants	3,346
Professional Fees	2,096
Total CONSULTANTS & PROFESSIONAL FEES	5,442
Workshops & Training	
Total WORKSHOP & TRAINING	0
Travel	3,824
Information & Public Relations	1,593
Office Costs	797
Communications	876
Financial Charges	155
Other General Expenses	1,319
Shared Support Services	
Total GENERAL EXPENDITURES	8,565
Programme and Supplementary Services Recovery	11,328
Total INDIRECT COSTS	11,328
TOTAL BUDGET	185,603



Paraguay: Local storm



-  Affected districts
-  Itapúa department